



a **GENPACT** company

PNMsoft Knowledge Base

Sequence Administrator Guides

# **Flowtime Website Installation and Configuration**

Aug. 2016  
Product Version 8.1+

© 2016 PNMsoft All Rights Reserved

This document, including any supporting materials, is owned by PNMsoft Ltd and/or its affiliates and is for the sole use of the PNMsoft customers, PNMsoft official business partners, or other authorized recipients. This document may contain information that is confidential, proprietary or otherwise legally protected, and it may not be further copied, distributed or publicly displayed without the express written permission of PNMsoft Ltd. or its affiliates.

PNMsoft UK 38 Clarendon Road Watford Hertfordshire WD17 1JJ

Tel: +44(0)192 381 3420 • Email: [info@pnmsoft.com](mailto:info@pnmsoft.com) • Website: [www.pnmsoft.com](http://www.pnmsoft.com)

**Microsoft Partner**

**Gold** Application Development

# TABLE OF CONTENTS

<b>Introduction .....</b>	<b>1</b>
<b>Installing the Flowtime Website .....</b>	<b>2</b>
Prerequisites .....	2
Software Prerequisites .....	2
Required Accounts.....	2
Installation Steps .....	2
<b>Getting Oriented Around the Flowtime Website .....</b>	<b>6</b>
<b>Understanding the File Structure .....</b>	<b>7</b>
web.config .....	7
aspx files .....	7
Control Template files .....	7
Portal.default.config .....	8
ServiceMetadata config files .....	8
<b>Editing the Site.....</b>	<b>9</b>
Adding a New Page .....	9
Adding a New Link to the Top Commands .....	10
Editing an Existing Page .....	11
Changing the Site Branding .....	12

## Introduction

The **Flowtime Website** enables you to provide the Flowtime functionality and experience to end users without having to install SharePoint.

It provides the option to add and edit pages quite easily, without the need to compile, as this is a website.

This document describes the installation and configuration options for the Flowtime Website.

## Installing the Flowtime Website

### Prerequisites

#### Software Prerequisites

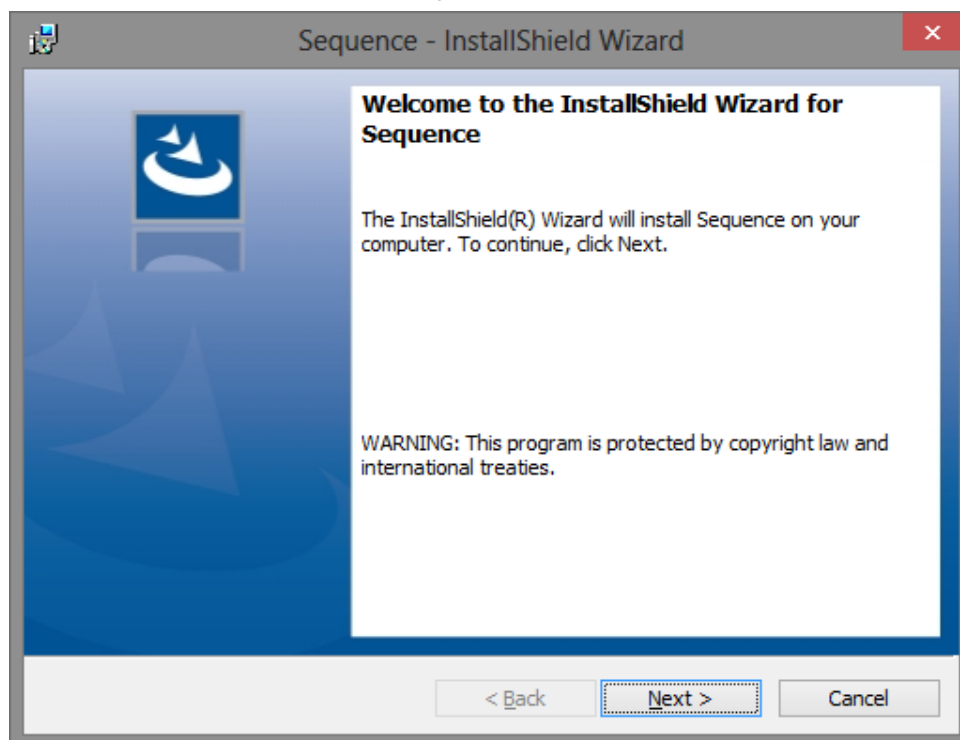
- You must already have an existing Sequence Database installed.
- IIS Role is configured on your server.
- On the IIS, create a website where you will install Flowtime Website.

#### Required Accounts

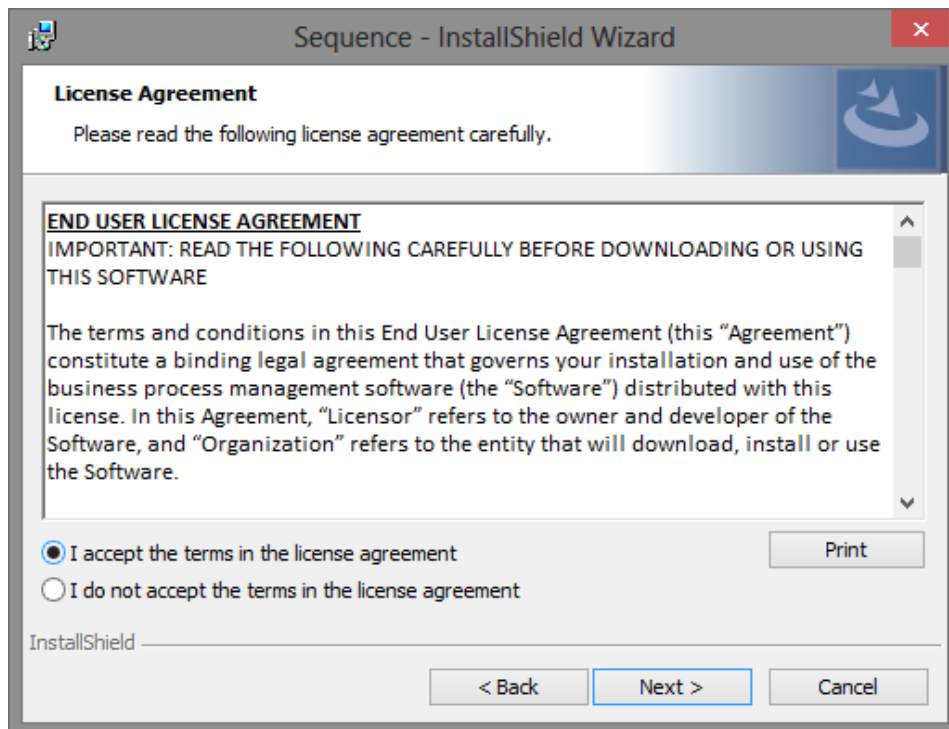
- You must be a Local Administrator on the server where you will install Flowtime.
- You must have an Application Pool account which is a member of the local IIS\_IUSRS group.

### Installation Steps

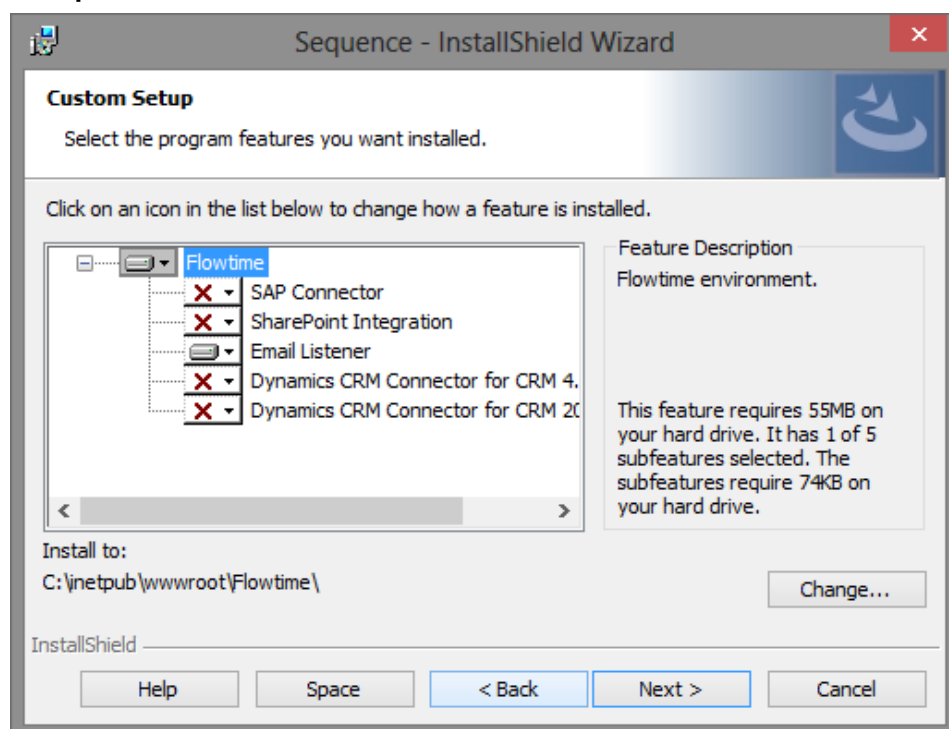
1. Download the Flowtime Website installation file from the [Downloads Center](#).
2. Run the installation .exe file (you must right-click and run as Administrator).



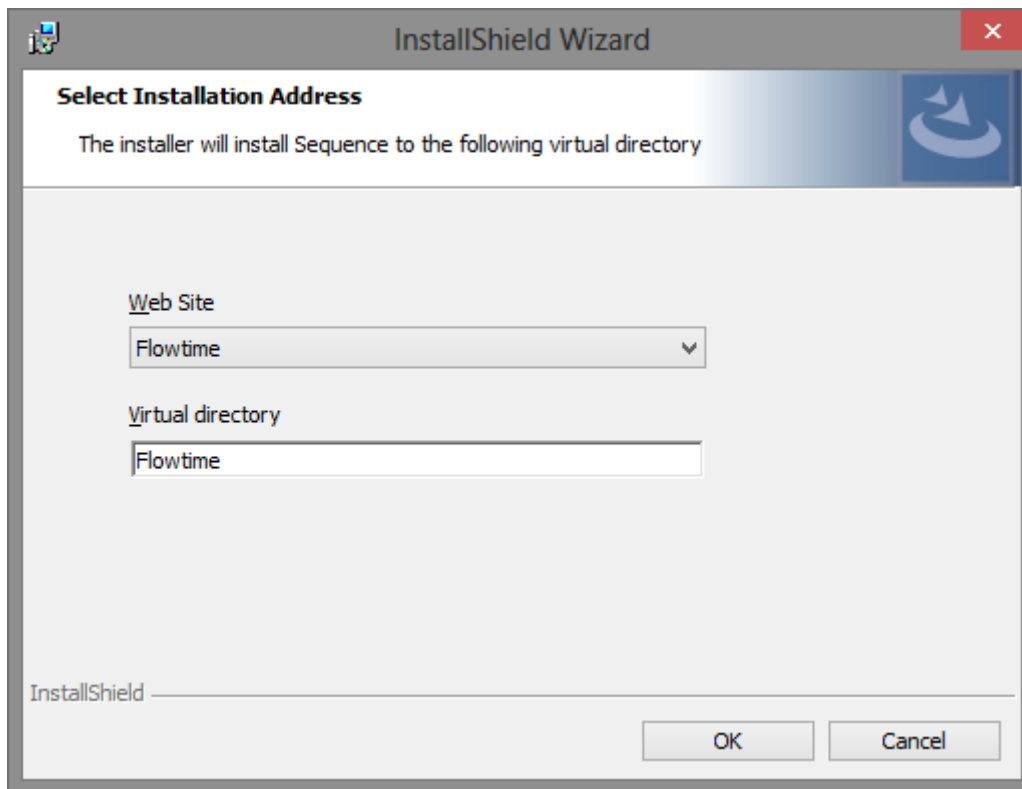
3. Click **Next**.



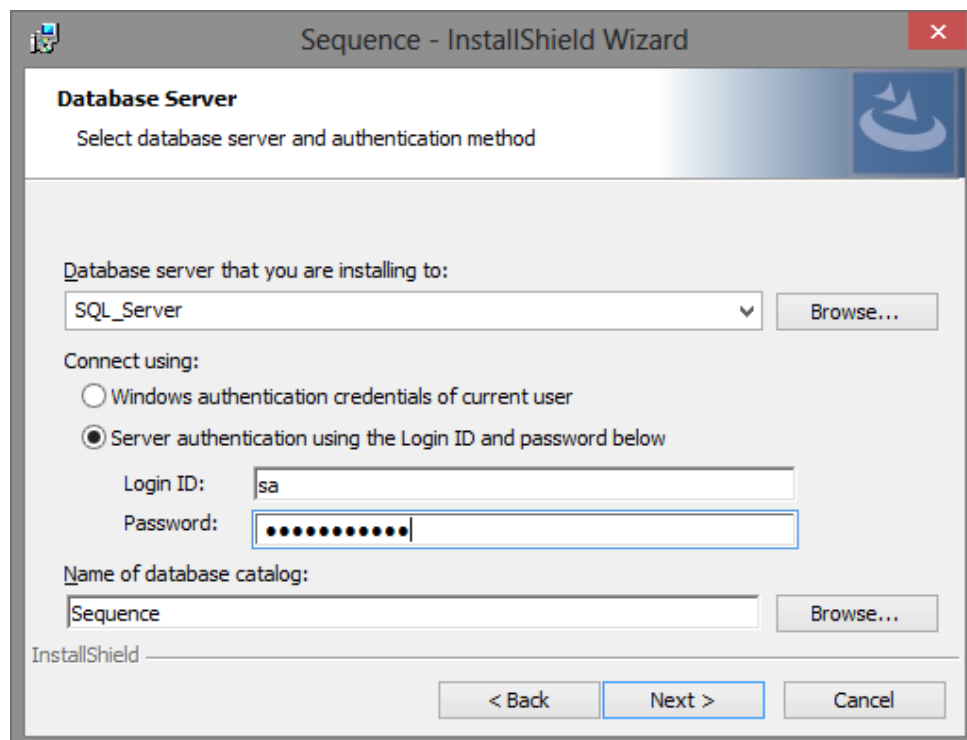
4. Click **I accept...** and click **Next**.



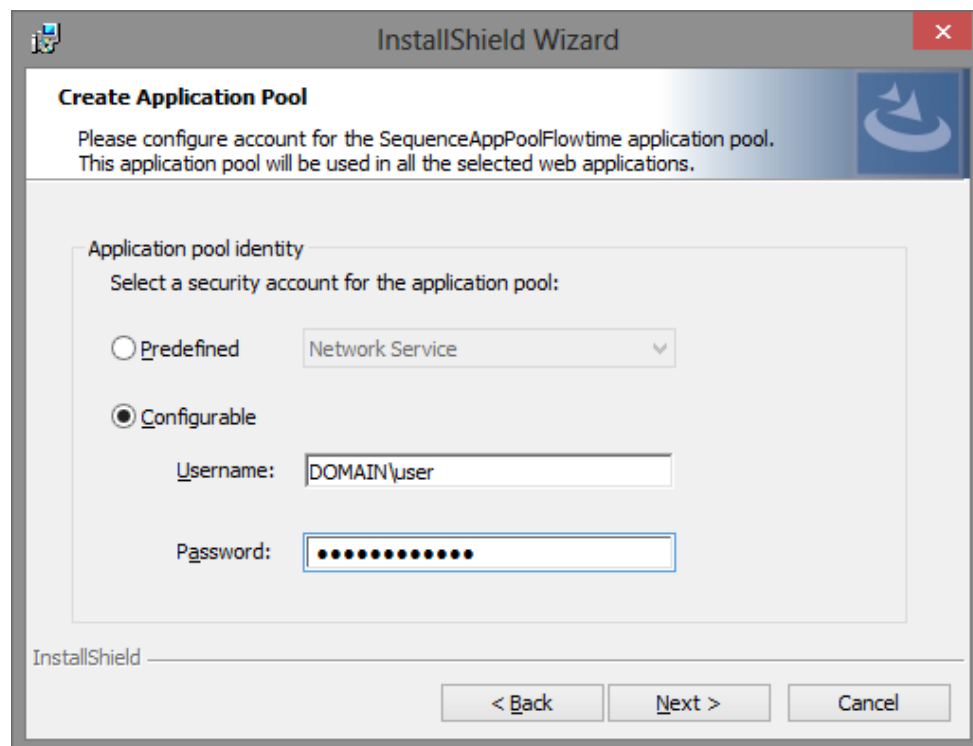
5. Select the features you need to install for your Sequence environment.
6. After selecting the features, click **Flowtime**, and click **Change**.



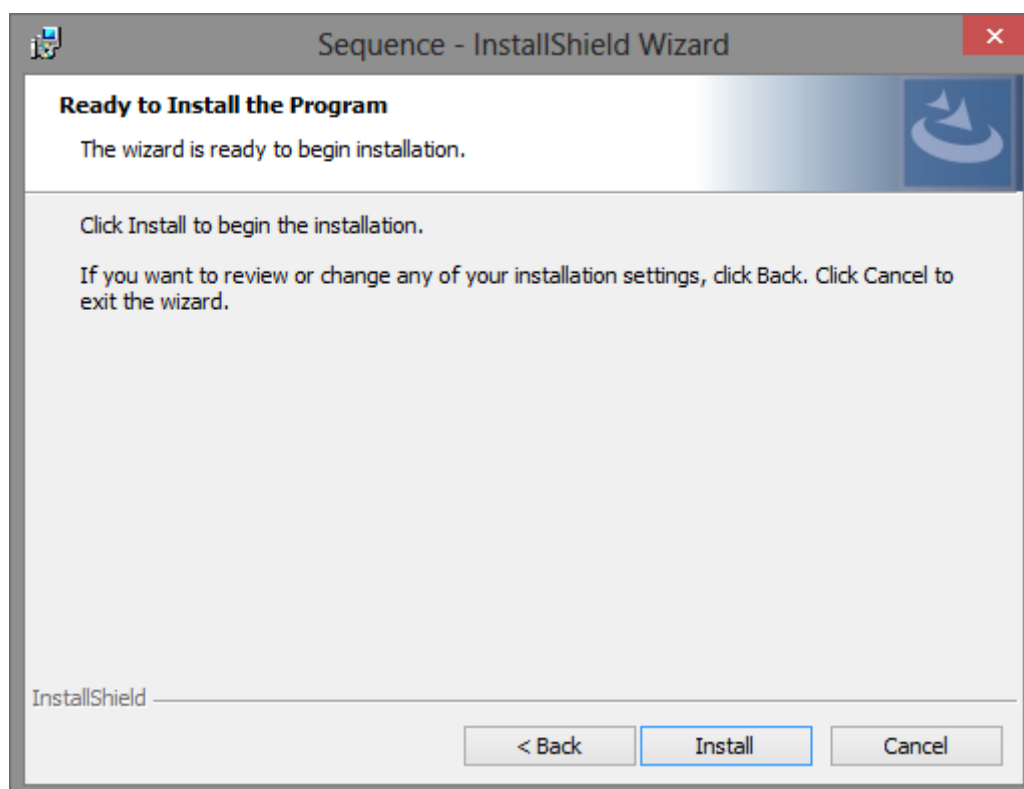
7. Select the **Web Site** you created for Flowtime.
8. (Optional) change the name of the **Virtual directory**. Click **OK**.



9. Configure the connection to your existing Sequence Database. Click **Next**.



10. Enter the credentials of your Application Pool account. Click **Next**.



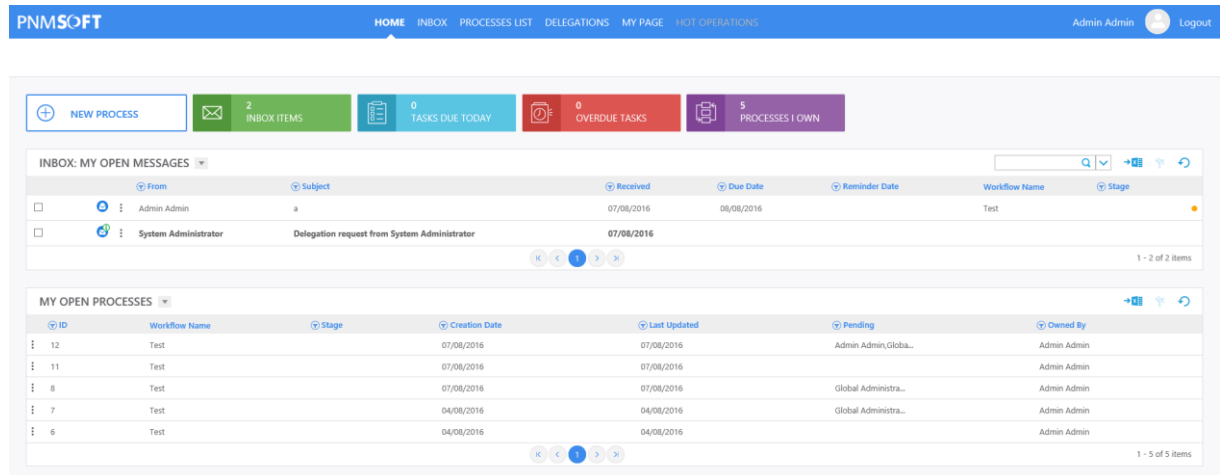
11. Click **Install**.



## Getting Oriented Around the Flowtime Website

For the end user, the Flowtime Website functions very similarly to a standard SharePoint-based Flowtime, with very small differences in layout and appearance.

You can navigate to each page using the top links. Here are some examples of pages:

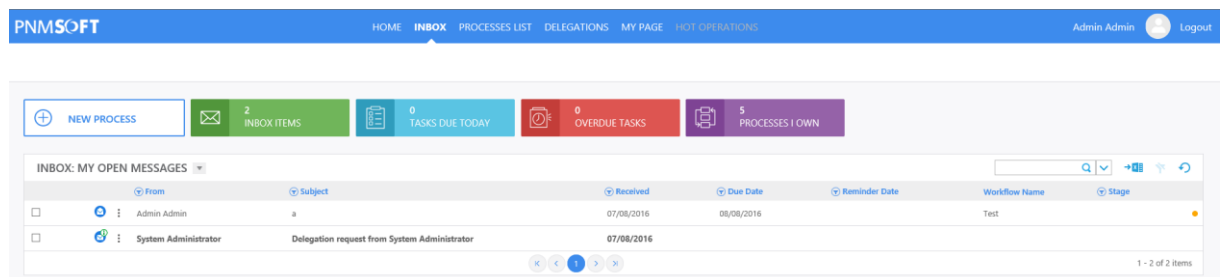


The homepage features a blue navigation bar with links: HOME, INBOX, PROCESSES LIST, DELEGATIONS, MY PAGE, and HOT OPERATIONS. The user is logged in as Admin Admin. Below the navigation bar, there are five colored boxes: NEW PROCESS (blue), INBOX ITEMS (green, 2 items), TASKS DUE TODAY (blue, 0 tasks), OVERDUE TASKS (red, 0 tasks), and PROCESSES I OWN (purple, 5 processes). The main content area is divided into two sections: INBOX: MY OPEN MESSAGES and MY OPEN PROCESSES. The INBOX section shows a table with columns: From, Subject, Received, Due Date, Reminder Date, Workflow Name, and Stage. The MY OPEN PROCESSES section shows a table with columns: ID, Workflow Name, Stage, Creation Date, Last Updated, Pending, and Owned By.

From	Subject	Received	Due Date	Reminder Date	Workflow Name	Stage
Admin Admin	a	07/08/2016	08/08/2016		Test	
System Administrator	Delegation request from System Administrator	07/08/2016				

ID	Workflow Name	Stage	Creation Date	Last Updated	Pending	Owned By
12	Test		07/08/2016	07/08/2016	Admin Admin, Globa...	Admin Admin
11	Test		07/08/2016	07/08/2016		Admin Admin
8	Test		07/08/2016	07/08/2016	Global Administra...	Admin Admin
7	Test		04/08/2016	04/08/2016	Global Administra...	Admin Admin
6	Test		04/08/2016	04/08/2016		Admin Admin

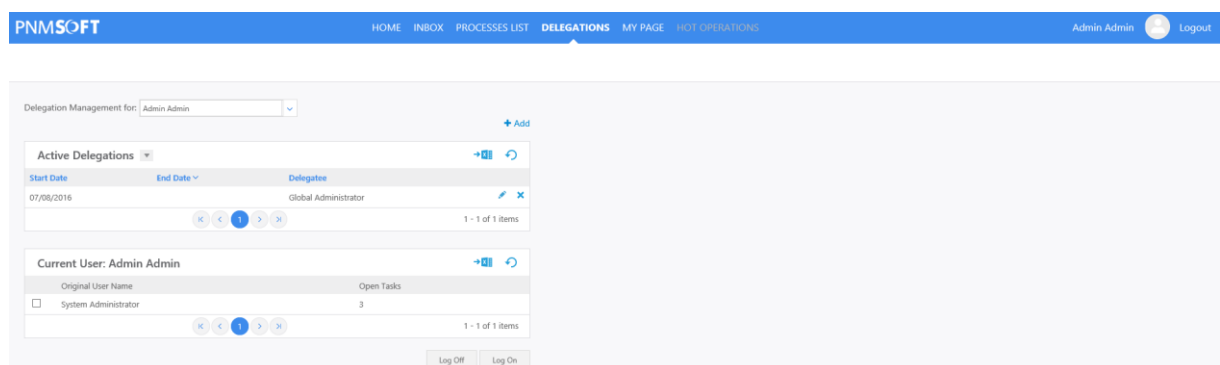
Homepage



The inbox page is similar to the homepage, showing the same navigation bar and summary boxes. The INBOX: MY OPEN MESSAGES section is expanded, showing a table with columns: From, Subject, Received, Due Date, Reminder Date, Workflow Name, and Stage. The MY OPEN PROCESSES section is collapsed.

From	Subject	Received	Due Date	Reminder Date	Workflow Name	Stage
Admin Admin	a	07/08/2016	08/08/2016		Test	
System Administrator	Delegation request from System Administrator	07/08/2016				

Inbox

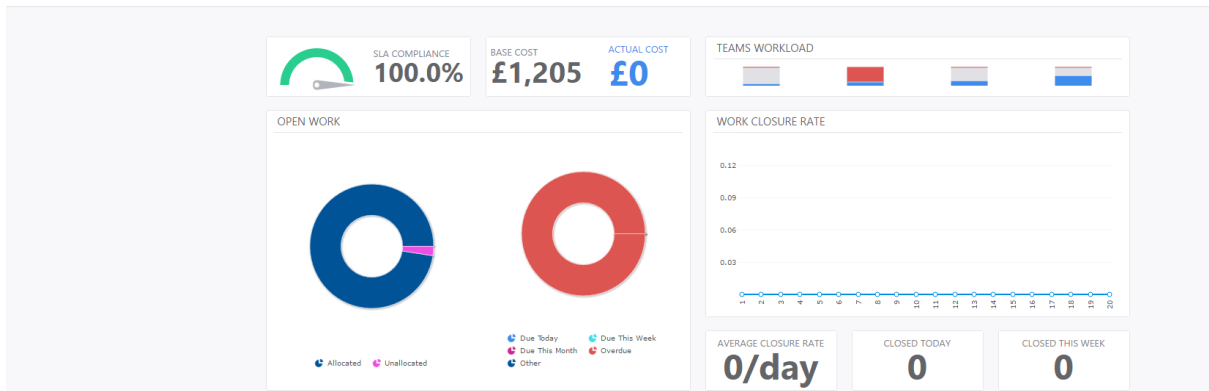


The delegations page shows the delegation management interface. It includes a dropdown for 'Delegation Management for: Admin Admin' and an 'Add' button. Below this, there are two sections: Active Delegations and Current User: Admin Admin. The Active Delegations section shows a table with columns: Start Date, End Date, and Delegatee. The Current User section shows a table with columns: Original User Name and Open Tasks. At the bottom, there are 'Log Off' and 'Log On' buttons.

Start Date	End Date	Delegatee
07/08/2016		Global Administrator

Original User Name	Open Tasks
System Administrator	3

Delegations



### HotOperations

*Note: From v8.2 and higher, Flowtime Website supports HotOperations.*

You can easily add and edit pages, but first, it's important to understand the file structure behind the site, as detailed in the following section.

## Understanding the File Structure

Once installed, there are several files that will help you configure and edit the Flowtime Website. These are listed below:

### web.config

The Flowtime web.config file enables you to control the Flowtime Website settings such as culture Theme, database connection and more.

For example, you can set the Flowtime Website language by editing this key:

```
<globalization culture="en-US" uiCulture="en-US" requestEncoding="utf-8"
responseEncoding="utf-8" fileEncoding="utf-8" />
```

### aspx files

These files define the appearance and functionality of each page on the Flowtime Website. E.g. Inbox.aspx defines the Inbox page. See the sections below for how to edit or add pages to the site.

### Control Template files

**Location:** [Site Physical path]\CONTROLTEMPLATES\Flowtime

The Flowtime site is assembled from pages that host the user controls.

E.g. UserMessagesGridControl.ascx is used to display the User Messages grid.

## Portal.default.config

**Location:**

C:\Program Files\PNMsoft\Shared Resources\Components\Flowtime\Config\Portal\Commands

This file defines the top menu links in the Flowtime Website. Here you can edit links, set the URL of each link and add links to new pages where needed.

## ServiceMetadata config files

**Location:**

C:\Program Files\PNMsoft\Shared Resources\Components\Flowtime\Config\ServiceMetadata

This set of config files define the columns display of each grid.

For example, the Messages grid columns setting is defined in MessagesServiceMetadata.**Portal**.Config

The files with the word “Portal” in their name are the files that define grids in the Flowtime Website.

***Note: This folder also contains standard SharePoint version config files for each web part, for your reference, but they do not affect the Flowtime Website.***

## Editing the Site

You can easily add pages, edit pages and make other appearance and functionality changes to the Flowtime Website. This is done by editing the files in the file structure as required by your solution. This section includes some common examples.

### Adding a New Page

1. Create an aspx file in the site root folder.
2. Rename the file: e.g. MyPage.aspx.
3. Open and edit the file.

Here is an example, where we display the Group Messages Grid control and Form Viewer control on the new page 'MyPage.aspx'. The Form Viewer control enables you to add any form view to a page without referencing a specific process (added sections are highlighted below).

For the controls to work it is necessary to add a Register tag for each control on the page that you add (these links can be found in the Flowtime Application in the IIS):

```
<%@ Page Title="" Language="C#" MasterPageFile="~/LAYOUTS/Masters/Portal.Master"
CodeBehind="Default.aspx.cs"
Inherits="PNMsoft.Sequence.Runtime.Web.UI.Pages.Default" AutoEventWireup="true"
%>

<%@ Register TagPrefix="sq" TagName="GroupMessagesGridControl"
Src="~/_controltemplates/Flowtime/GroupMessagesGridControl.ascx" %>

<%@ Register TagPrefix="sq" TagName="FormViewerControl"
Src="~/_controltemplates/Flowtime/FormViewerControl.ascx" %>

<asp:Content ID="Content" ContentPlaceHolderID="content" runat="server">
    <div class="sqpt-container">

        <div class="sqpt-grid-control">
            <sq:GroupMessagesGridControl ID="GroupMessagesGridControl"
            PageSize="5" DisplayVariables="false"
            runat="server" />
        </div>

        <sq:FormViewerControl ID="ReportsView"
        FormVirtualPath="~/SequenceForms/wf/Test/Test/Form1/DefaultView.ascx"
        runat="server" />
    </div>
</asp:Content>
```

***Important: If you need to add your own code behind for the page, you must inherit from the PortalBasePage class from PNMsoft.Sequence.Runtime.Web.UI dll.***

## Adding a New Link to the Top Commands

Let's say you have created the new page: MyPage.aspx, and you would now like to add a link to that page on the top menu.

Follow these steps:

1. Open the file Portal.default.config.
2. Copy a MenuItem section and paste it below the existing MenuItem sections. E.g.:

```
<MenuItem
    Id="Inbox"
    Command="Inbox"
    Text="{ $resources.Inbox }"
    Tooltip="{ $resources.Inbox }">
</MenuItem>
```

3. Edit the values in the MenuItem section as follows:

```
<MenuItem
    Id="MyPage"
    Command="MyPage"
    Text="My Page"
    Tooltip="MY Page">
</MenuItem>
```

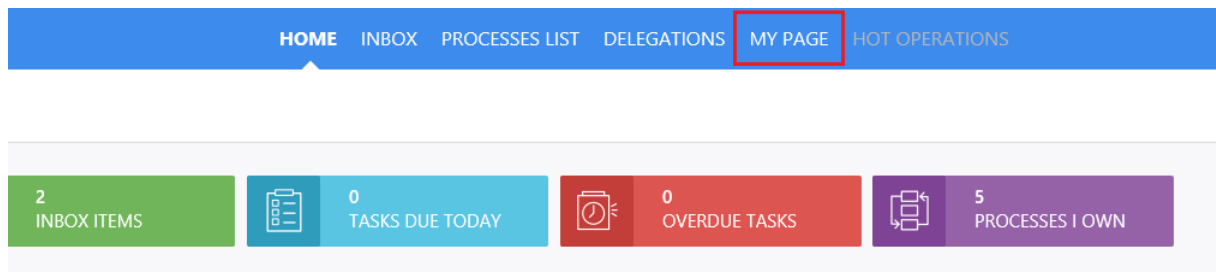
4. Copy a NavigateToUrlCommand section and paste it below the existing NavigateToUrlCommand section. This section determines the URL of the link. E.g.:

```
<NavigateToUrlCommand
    Id="Inbox"
    Url="~/Inbox.aspx?MessageInstanceViewType=2">
</NavigateToUrlCommand>
```

5. Edit the values in the NavigateToUrlCommand section as follows:

```
<NavigateToUrlCommand
    Id="MyPage"
    Url="~/MyPage.aspx">
</NavigateToUrlCommand>
```

6. Perform IIS Reset, and refresh the Homepage. The new link will appear in the Top Menu.



**New Link Added to Top Menu**

## Editing an Existing Page

1. Duplicate the aspx file of the page you want to edit in the site root folder. For example, Duplicate Inbox.aspx to **MyPage.aspx**
2. Edit the file as needed. E.g. you can add a new user control to Inbox.aspx (added sections are highlighted), or change the control properties.

```
<%@ Page Title="" Language="C#" MasterPageFile="~/Layouts/Masters/Portal.Master"
MenuId="Portal" SelectedMenuItemId="MyPage" AutoEventWireup="false"
EnableViewState="false" CodeBehind="Inbox.aspx.cs"
Inherits="PNMsoft.Sequence.Runtime.Web.UI.Pages.Inbox" %>
<%@ Register TagPrefix="sq" TagName="InboxSummaryControl"
Src="~/_controltemplates/Flowtime/InboxSummaryControl.ascx" %>
<%@ Register TagPrefix="sq" TagName="NewProcessControl"
Src="~/_controltemplates/Flowtime/NewProcessControl.ascx" %>
<%@ Register TagPrefix="sq" TagName="ProcessesIOwnControl"
Src="~/_controltemplates/Flowtime/ProcessesIOwnControl.ascx" %>
<%@ Register TagPrefix="sq" TagName="UserMessagesGridControl"
Src="~/_controltemplates/Flowtime/UserMessagesGridControl.ascx" %>
<%@ Register TagPrefix="sq" TagName="GroupMessagesGridControl"
Src="~/_controltemplates/Flowtime/GroupMessagesGridControl.ascx" %>
<asp:Content ID="Content" ContentPlaceHolderID="content" runat="server">
<div class="sqpt-container">
<div class="sqpt-summary-controls">
<div>
<sq:NewProcessControl ID="NewProcessControl"
runat="server" />
</div>
<div>
<sq:InboxSummaryControl ID="InboxSummaryControl"
InboxPage="Inbox.aspx"
runat="server" />
</div>
<div>
<sq:ProcessesIOwnControl ID="ProcessesIOwnControl"
ProcessesIOwnPage="OpenProcesses.aspx" runat="server" />
</div>
</div>
<div class="sqpt-grid-control">
<sq:UserMessagesGridControl ID="UserMessagesGridControl"
PageSize="30" DisplayVariables="true" ConfigName="Portal"
runat="server" />
</div>
<div class="sqpt-grid-control">
<sq:GroupMessagesGridControl ID="GroupMessagesGridControl"
PageSize="5" DisplayVariables="false"
runat="server" />
</div>
</div>
```

```
</asp:Content>
```

### 3. Change the page reference in Portal.default.config

Location:

C:\Program Files\PNMsoft\Shared Resources\Components\Flowtime\Config\Portal\Commands

```
<NavigateToUrlCommand  
    Id="Inbox"  
    Url="~/CustomInbox.aspx?MessageInstanceViewType=2">  
</NavigateToUrlCommand>
```

### 4. Edit other references as needed for example the Inbox Summary control

## Changing the Site Branding

To change the site colors and branding you should create your own theme as follows:

1. Duplicate the Sequence8 folder in *C:\Program Files\PNMsoft\Shared Resources\Themes*
2. Give it a meaningful name e.g. CustomerTheme
3. Apply the required changes to the flowtimesite.css file.
4. Change the Theme key in the web.config to your new folder:

```
<add key="PNMsoft.Sequence.Flowtime.Theme" value="MyCustomTheme"/>
```