

# Sequence Kinetics SP4

## Release Notes

Issue Date: 11<sup>th</sup> July 2013

© 2013 PNMsoft All Rights Reserved

No part of this document may be reproduced in any form by any means without the prior authorisation of PNMsoft.

PNMsoft UK 38 Clarendon Road Watford Herts W17 1JJ

Tel: +44(0)192 381 3420 • Email: [info@pnmsoft.com](mailto:info@pnmsoft.com) • Website: [www.pnmsoft.com](http://www.pnmsoft.com)



**Microsoft** Partner

Gold Independent Software Vendor (ISV)

---

## Contents

<b>INTRODUCTION .....</b>	<b>4</b>
<b>INSTALLATION .....</b>	<b>4</b>
NEW SEQUENCE 7.4 INSTALLATION.....	4
UPGRADING FROM SEQUENCE v6.4.4 OR LATER.....	4
UPGRADING FROM SEQUENCE VERSIONS 6.4.3 OR EARLIER.....	4
<b>NEW FEATURES .....</b>	<b>5</b>
NEW FLOWTIME.....	5
USER DISPLAY TIME .....	9
DATA SOURCE CONFIGURATION WIZARD.....	11
ADD NEW FIELD .....	13
PROCESS <sup>TO GO</sup> MOBILE APP MULTILINGUAL SUPPORT.....	15
<b>ENHANCED FEATURES .....</b>	<b>16</b>
UX STUDIO ENHANCEMENTS .....	16
<b>BREAKING CHANGES.....</b>	<b>16</b>
<b>ADDRESSED CRS .....</b>	<b>16</b>
<b>KNOWN ISSUES .....</b>	<b>16</b>

## Introduction

Sequence Kinetics SP4 (SEQUENCE v7.4) is an official product release incorporating new features and fixes. For a complete list of Sequence Kinetics's major features, [click here](#). This document details the features added in the latest update, SP4. Sequence Kinetics SP4 was approved for release by PNMsoft QA on July 11<sup>th</sup>, 2013.

## Installation

You can download the installation files from the [Download Centre](#).

SEQUENCE 7.4 installation requires Windows Server 2008 SP4 or later, and a 64-bit processor with 4 cores.

### New SEQUENCE 7.4 Installation

1. Unzip the file:  
[http://ftp.pnmsoft.com/7.4.0.0Installation/SequenceKinetics7.4\\_Setup\\_x64.zip](http://ftp.pnmsoft.com/7.4.0.0Installation/SequenceKinetics7.4_Setup_x64.zip).
2. Run *7.4.0\_Setup.exe* (it is in the zip file).
3. Follow the instructions in the [SEQUENCE 7.x Installation Guide](#) in the [Knowledge Centre](#).

### Upgrading from SEQUENCE v6.4.4 or later

1. Verify that version 6.4.4 or later is installed on your server.
2. Backup the configuration files and your database.
3. Free up system resources:
  - i. Use the IISReset command-line utility to reset the IIS.
  - ii. Stop the Windows Service and the Active Directory Service.
4. Download and run the file:  
[http://ftp.pnmsoft.com/7.4.0.0Installation/SequenceKinetics7.4\\_Setup\\_x64.zip](http://ftp.pnmsoft.com/7.4.0.0Installation/SequenceKinetics7.4_Setup_x64.zip)
5. Run IISReset.

*Note: If you are using a VPC, please consider backing it up before the upgrade.*

### Upgrading from SEQUENCE Versions 6.4.3 or Earlier

A direct upgrade to version 7.4 has not been tested and may cause server instability. Therefore, please update/upgrade your SEQUENCE application to version 6.4.4 using the upgrade file in *6.4.0.0 Installation/Setup Or Upgrade* and then upgrade to version 7.4 as detailed in Upgrading from SEQUENCE v6.4.4 or later above.

## New Features

### New Flowtime

SP4 includes an exciting new Flowtime end user interface that brings with it major improvements in user experience, modernised look and feel, and enhanced functionality. Some of these improvements include:

- A newly designed Home page
- Modernised Look and Feel with ‘Metro’ and SharePoint 2013 design
- The “Start New Process” Web Part
- The “Summary” Web Part
- Multiselection of rows in Flowtime grids
- Control over variable display in grids
- More Configuration Options

**Note: If you are using SharePoint 2013, the new Flowtime is automatically installed. If you are using SharePoint 2010, the new Flowtime is also available on demand - you will need import the new web parts and set your config file to SharePoint 2013. Please contact our Support Team for detailed instructions.**

The screenshot displays the new Flowtime user interface. At the top, there is a navigation bar with 'System Account', 'Settings', and 'Help' icons. Below this is a breadcrumb trail: 'BROWSE PAGE' > 'Sequence Kinetics' > 'Flowtime' > 'Monitoring & Reports' > 'doonsum' > 'EDIT LINKS'. A search box is located on the right side of the navigation bar.

The main content area is divided into several sections:

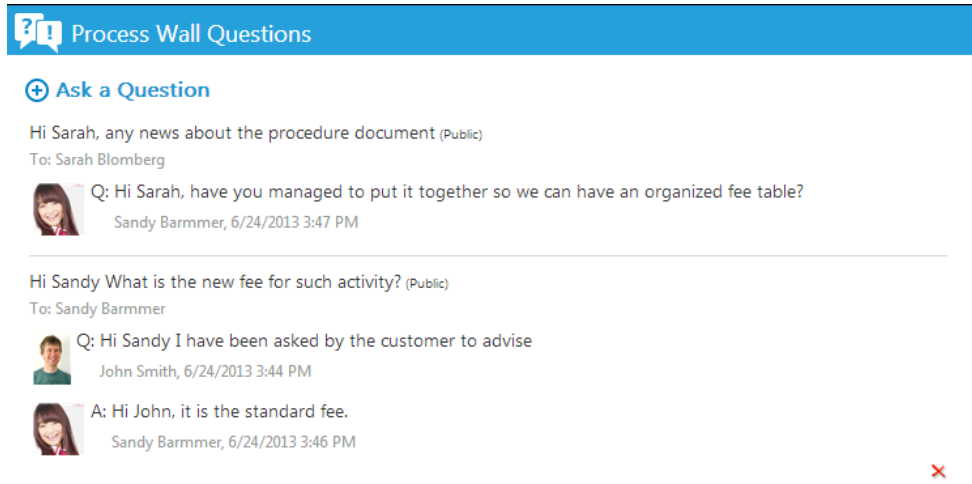
- Home Summary:** A row of four colored boxes showing statistics: '33 (30) Inbox Items' (green), '0 Due Today Tasks' (yellow), '0 Over Due Tasks' (red), and '42 Processes I Started' (purple). A '+ New Process' button is on the right.
- Inbox:** A table titled 'Inbox: My Open Messages' with columns for 'Received', 'Subject', 'Workflow Name', and 'From'. It lists several messages, including one from Alan Jackson about workflow #1160 and another from Sandy Barmmer.
- Number of Workflows Per Status:** A bar chart showing 'Open' workflows at 43 and 'Close' workflows at 11.

On the left side, there is a sidebar menu with options like 'Business Processes', 'Inbox', 'Processes I Started', 'Monitoring & Reports', 'Dashboard', 'Delegations', 'Delegation Management', and 'Change User'. At the bottom of the sidebar is an 'EDIT LINKS' icon.

### New Flowtime

### Improved User Experience

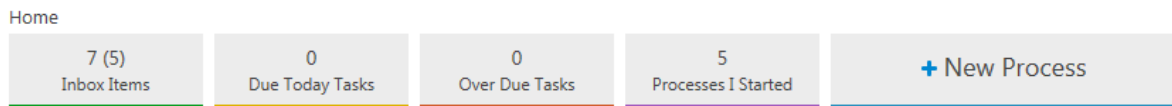
The new Flowtime’s user experience has been modernized and enhanced. For example, Social collaboration using the Process Wall has never been easier:



### Process Wall Social Collaboration

#### Summary Web Part

Displayed on the Home page, this web part provides a very practical summary of key information for the user:



#### Summary Web Part

#### Start New Processes Web Part

This web part makes searching for and starting new processes easier:

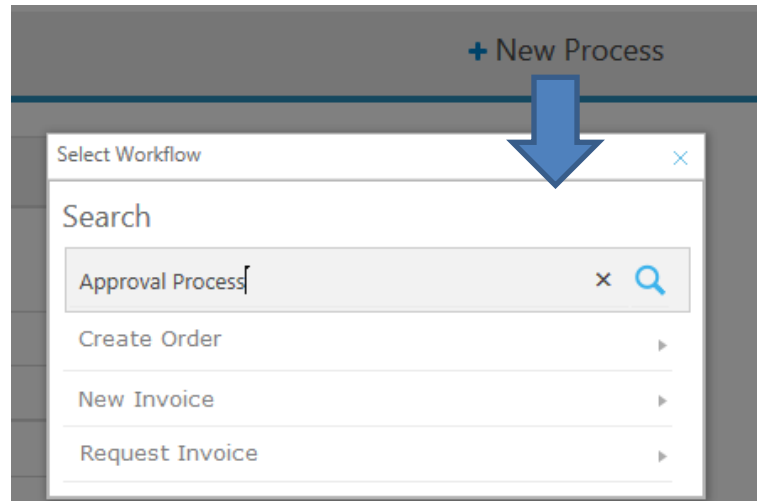
Home

42 (39) Inbox Items    0 Due Today Tasks    24 Over Due Tasks    30 Processes I Started    **+ New Process**

Inbox: My Open Messages ...

	From	Workflow Name	Subject	Received
<input type="checkbox"/>	Alan Jackson	sendOverdueMsg	overdue in 5 days	7/11/2013
<input type="checkbox"/>	Alan Jackson	sendOverdueMsg	overdue today	7/11/2013
<input type="checkbox"/>	Alan Jackson	sendOverdueMsg	overdue yesterday	7/11/2013
<input type="checkbox"/>	System Administrator	sendOverdueMsg	sendOverdueMsg #40 has been rolled back.	7/11/2013
<input type="checkbox"/>	System Administrator	sendOverdueMsg	overdue yesterday	7/11/2013

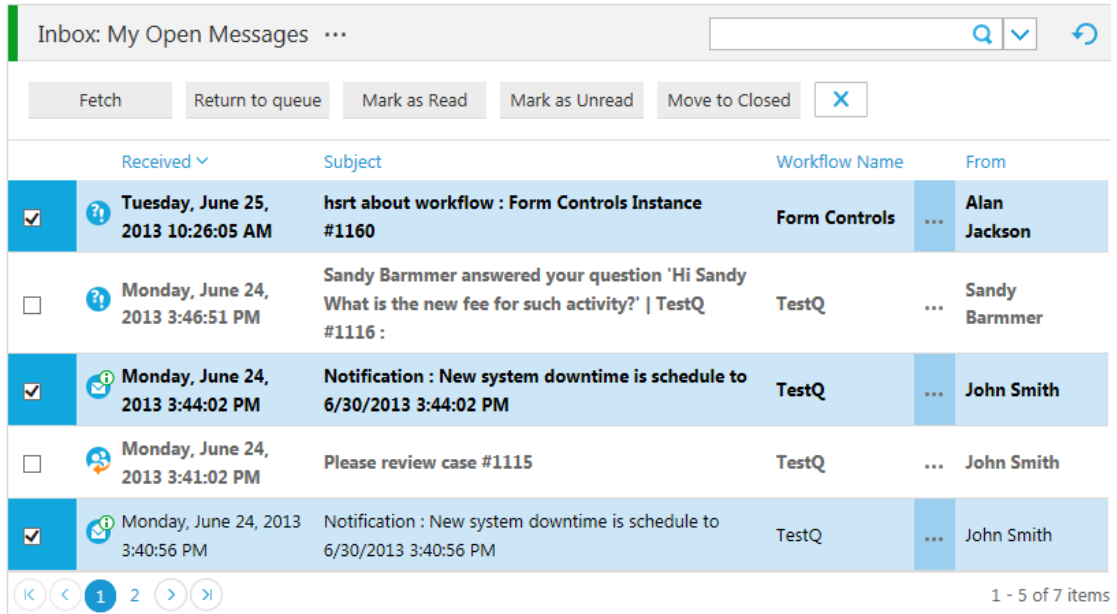
**Start New Process Web Part**



**Searching for a Process to Start**

### Multi-selection in Grids

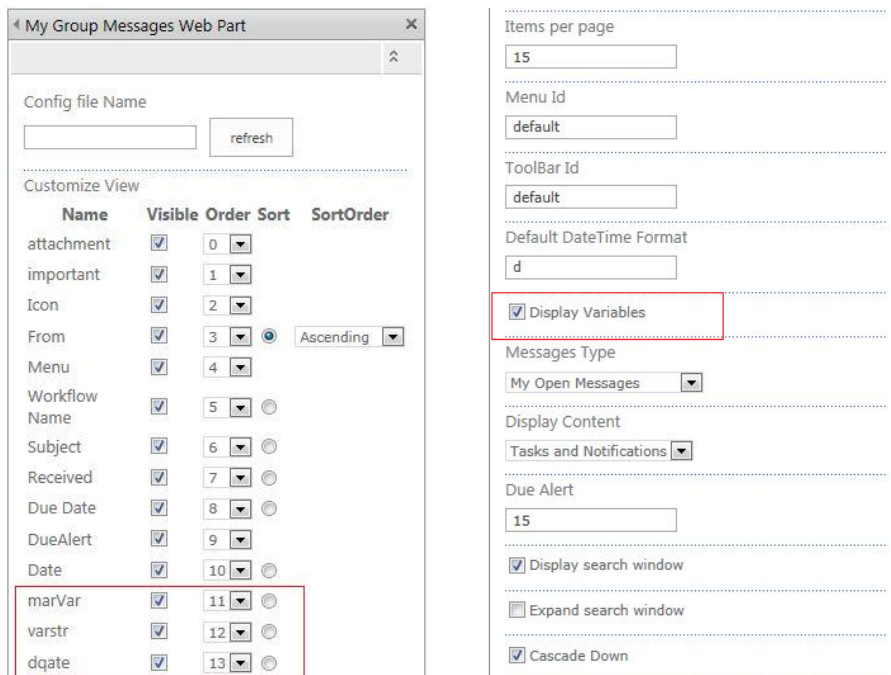
Users can now select multiple rows in Flowtime grids, enabling them to perform actions on multiple records (e.g. Fetching multiple tasks).



### Multiselection in Grids

#### Configuration of Variable Column Display

Administrators can configure which variable columns to display in Flowtime grids, using the Edit Web Part tab.



### Variable Column Configuration Options



## User Display Time

In SP4, every end user can see all times according to his or her time zone. This is very important for multinational organisations. Users working on the same processes and forms in different countries will see the time according to their location.

**Process #1116**

Message Properties  
Created 6/24/2013

Workflow Properties  
Workflow Name Control  
Created 6/24/2013  
Created By John Smith  
Last Updated 6/24/2013  
Permission Full Control

Message  
To Sarah Blomberg  
From John Smith  
Date 6/24/2013  
Subject Notification : New system downtime is schedule to 6/30/2013 3:44:02 PM

The VR system is scheduled for maintenance and will be down for several hours.  
Please backup all data accordingly.

Thanks,  
System Team

### Time Display for Sarah in Los Angeles

**Process #1116**

Message Properties  
Created 6/24/2013

Workflow Properties  
Workflow Name Control  
Created 6/24/2013  
Created By John Smith  
Last Updated 6/24/2013  
Permission Full Control

Message  
To Robert Durfman  
From John Smith  
Date 6/24/2013  
Subject Notification : New system downtime is schedule to 6/30/2013 6:44:02 PM

The VR system is scheduled for maintenance and will be down for several hours.  
Please backup all data accordingly.

Thanks,  
System Team

### Time Display for Robert in New York

***Breaking Change: if there was a field in your forms that displayed time, it will now display differently for each user depending on their time zone.***

Administrators can set each user's Time Zone in the Administration, in the Time Zone field (this field has also been added to the tblemployees table in the database).

**Update Table: Employees**

First Name	Chris	Start Page	Inbox
Last Name	Perry	E-mail	
Title	Employee	Global Administrator	<input type="checkbox"/>
Domain	QATEST	Calendar	General
Interface Language	English (UK)	Active	<input checked="" type="checkbox"/>
Time Zone	(UTC+08:00) Perth		
Picture	Chris Perry.png <input type="button" value="Remove"/>		

User Name: Chris

### Time Zone Field in Employees Table

In addition, there is a new type: 'Time' in the Data Model of Sequence Kinetics Forms. This type enables you to add a field of type Time (without Date) to your forms.

**Data Fields**

Name	Type
fldId	Whole Number (Int32)
fldIWfid	Whole Number (Int32)
fldActId	Whole Number (Int32)
fldAIId	Whole Number (Int32)
Name	Text (String)
UserTime	Text (String)

**Properties**

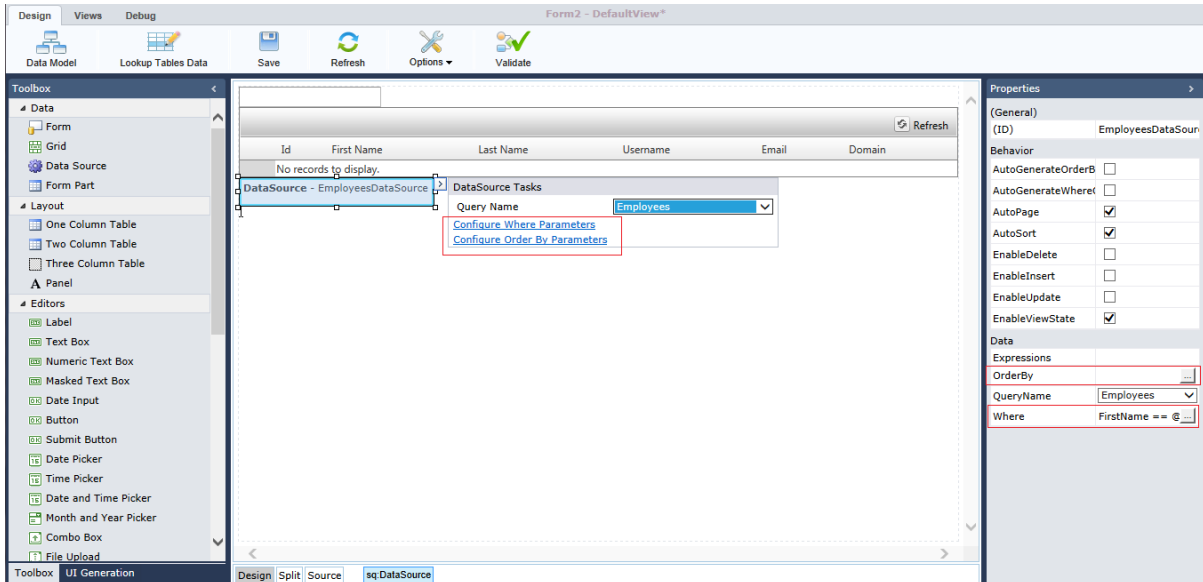
General

- Can be blank (Nullable)
- Data Source Name: UserTime
- Data Source Type: [...]
- Default Value: [...]
- Display Name: UserTime
- Is Generated:
- Is Identity:
- Is Primary Key:
- Is System:
- Is Version:
- Max Length: 0
- Sync Mode: Default

### Time Field

## Data Source Configuration Wizard

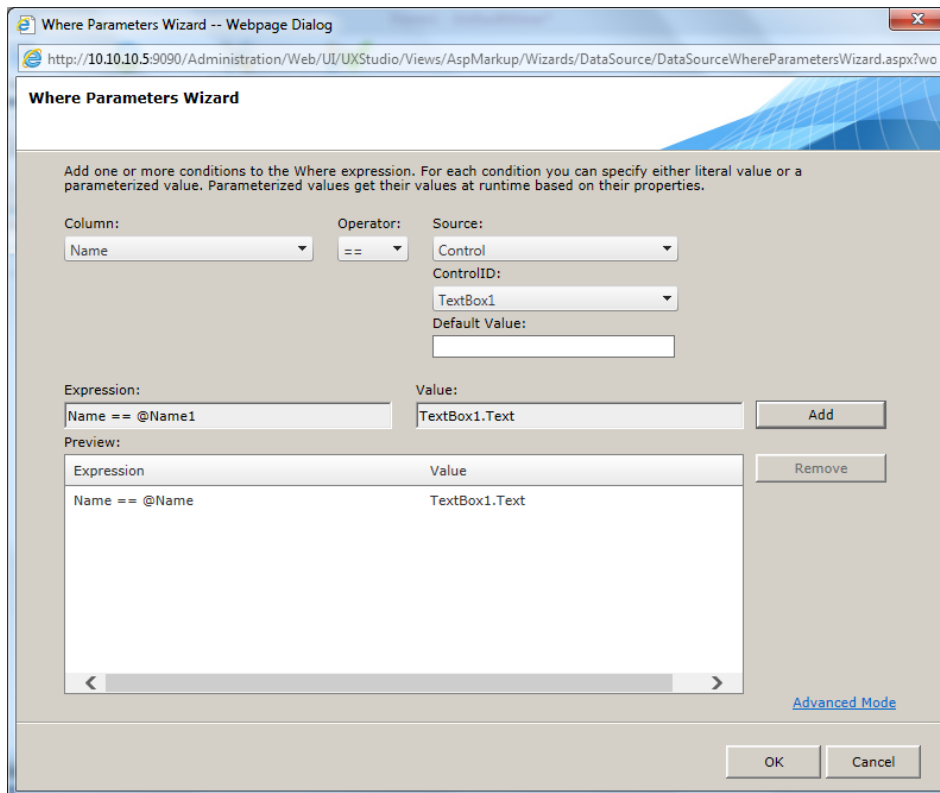
This wizard enables process designers to filter the displayed values of a data source (e.g. grid, combo) according to a where and order by definition.



### Data Source Configuration Options

For example, you create a grid and a text box on your form. You can configure the Data Source so that when the end user enters a last name in the text box, the grid then displays only the records with that Last Name. You can also order the results according to specific columns.

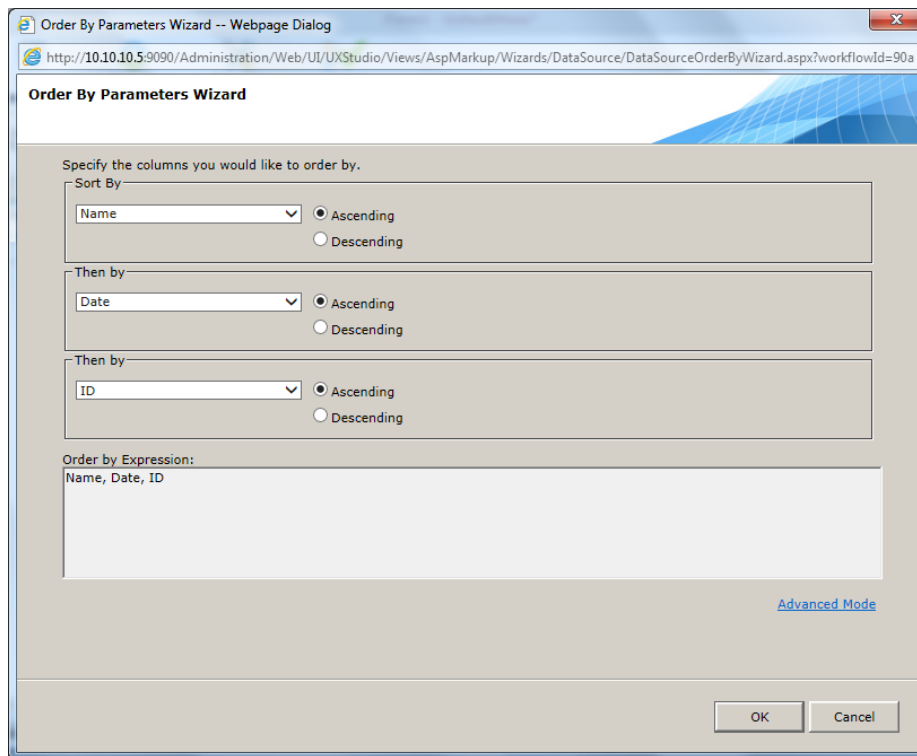
You configure the where condition in the Where Parameters Wizard (or in the markup).



### Data Source Configuration – Where Parameters Wizard

[Learn more about this feature.](#)

You can order the results by multiple columns in the Order By Parameters wizard (or in the markup).

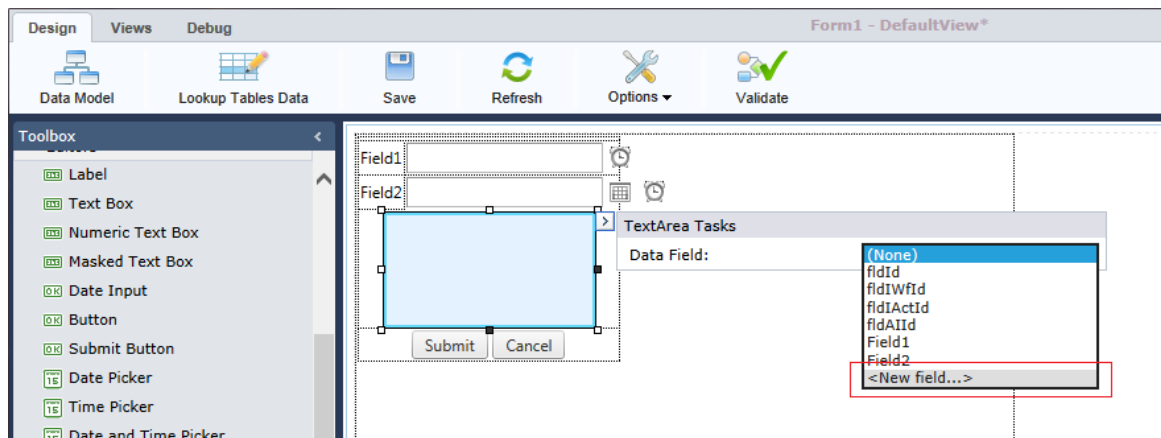


**Order By Parameters Wizard**

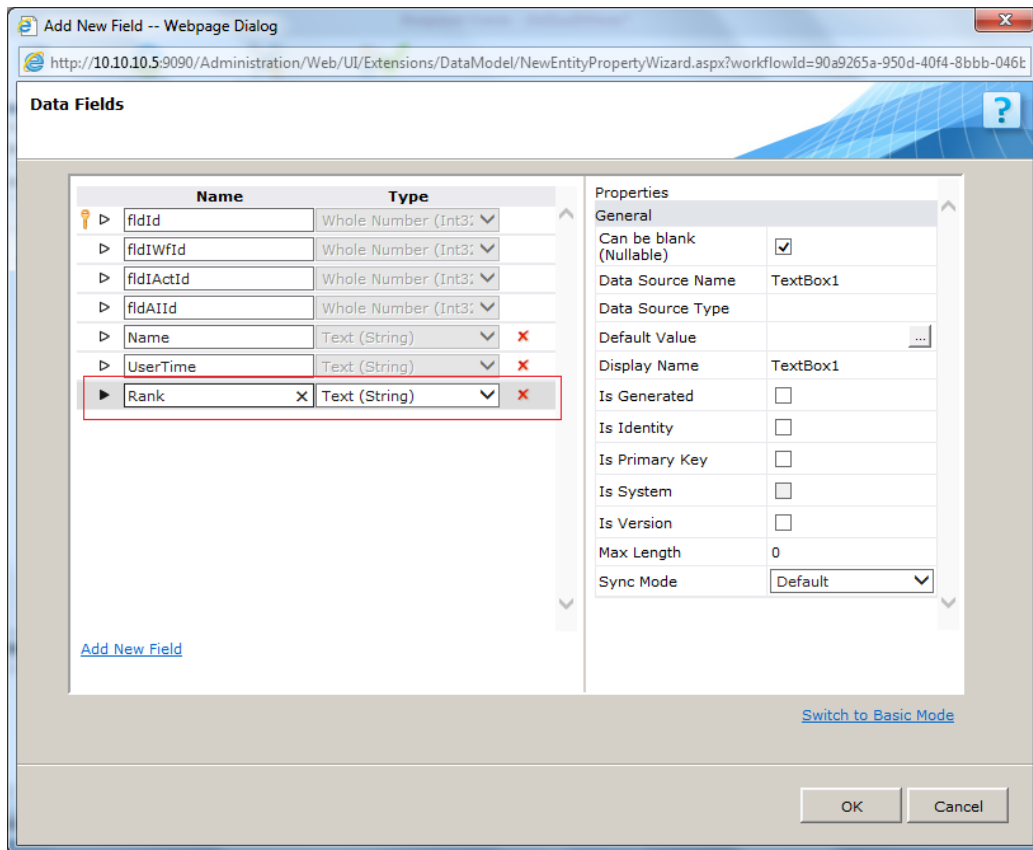
[Learn more about this feature.](#)

## Add New Field

SP4 makes adding new form fields to the Data Model quicker and easier. For example, to add a new field to an existing form, add the field to the form view and simply select “New Field” from the smart pane. The Data Fields screen opens, enabling you to quickly add this field to the form’s Data Model. [Watch a short video of this feature.](#)

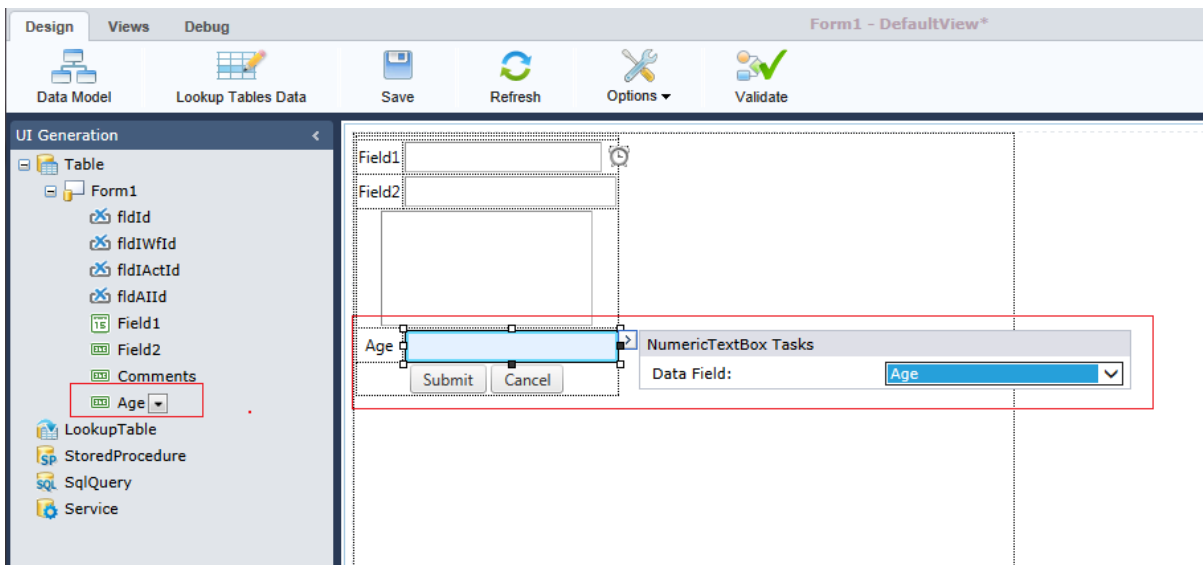


**Add New Field**



**Data Model - Data Fields Screen**

In addition, if you add a field to the Data Model – Data Fields screen, you can now quickly auto-generate that field on the form using the UI Generation, without having to regenerate the UI of the whole form. [Watch a short video of this feature.](#)



**Generating UI for New Field**

## Process<sup>TO GO</sup> Mobile App Multilingual Support

In SP4, Process<sup>TO GO</sup>, Sequence Kinetics's mobile end user application is multilingual. The language the user views depends on the Interface Language field which his/her Administrator defines in the Employee table. This language is accordingly displayed when the user logs into Sequence Kinetics via mobile device.

Sequence Kinetics™ Logout  
Welcome System Administrator

Administration  
 Global Settings  
 Monitoring  
 Organisation Settings  
 Employees  
 Calendars  
 Employee Roles  
 Developers  
 Lookup Tables  
 Workflows  
 All Workflows

**Update Table: Employees**

First Name	Ben	Start Page	Inbox
Last Name	Burton	E-mail	
Title	Employee	Global Administrator	<input type="checkbox"/>
Domain	QATEST	Calendar	General
Interface Language	Dutch (Netherlands)	Active	<input checked="" type="checkbox"/>
Time Zone	(UTC-12:00) International Date Line West		
Picture	Select		

User Name: Ben  
 Password: Change Password

Update Close Reset

### Interface Language Selection



### Process<sup>TO GO</sup> - Multilingual

*Note: the following languages are available: English, French, Hebrew, Spanish, Dutch, and Portuguese.*

## Enhanced Features

### UX Studio Enhancements

SP4 includes several user experience enhancements in the UX Studio, for example:

- Auto-closing tag in the markup.
- Improved drag and drop experience.
- Composite control selection.

### Breaking Changes

1. Forms with server side validation that failed will not redirect to the next activity. Enforcement has been added to the server side validation of the Validation controls. Therefore, forms whose save operation result is invalid will not be redirected.
2. The CreatedBy property in the expression tree returns the 'Created by' and not the 'Sent by' (From) value.
3. A form that is filtered using a where condition and whose data source returns null, will enter Insert mode. If the where parameter value changes and the where condition returns data, then the form enters Edit mode.
4. If there was a field in your forms that displayed time, it will now display differently for each user depending on their time zone.

### Addressed CRs

4808 – Adding options to process list items in Flowtime.

4739 – Improved usability in the business process list.

4520 – Better debugging experience.

2400 – Control over variables display.

### Known Issues

See known issues online at:

<http://members.pnmssoft.com/Downloads/Lists/Known%20Issues/AllItems.aspx>