



CLEAR HD VIDEO GLASSES USER GUIDE

Using a camcorder has never been as non-intrusive or hands-free as the Clear HD Video Glasses. Just put on the eyeglasses, press a button, and capture exactly what you're seeing and hearing. The unisex-design frame contains 8GB of storage with the camera's lens hidden in the bridge. Also embedded in the frame is a microphone and a lithium polymer battery that powers the camera for up to 90 minutes. You recharge the camera using the included USB cable. Plug the camera into your computer, and you'll be able to review all you witnessed in high-definition video.

In the Box

- Glasses with built-in camera
- USB cable
- Carrying case
- Cleaning cloth
- User manual

Precautions

Don't leave the glasses in a hot environment such as on the dashboard of a vehicle parked under a blazing sun.

Don't immerse the glasses in liquid or expose them to rain or snow. The camera electronics are not waterproof.

Don't toss the glasses into a fire since the battery could explode.

Don't aim a bright light into the lens or point the camera at the sun since either could damage the sensor.

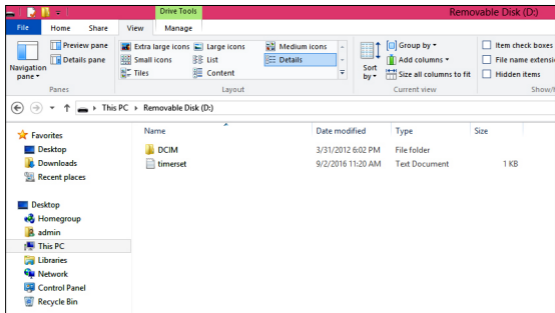
Don't operate the device in dusty, sandy or dirty places since the camera's components could be damaged. If you want to chance taking the camera into less than ideal conditions, first cover the USB port with black electrical tape.

This product should not be used in illegal ways. Observe relevant laws.

Getting Started

Charge the internal battery by attaching the included USB cable to the port on the underside of the frame and tethering it to a USB adapter (not included) that plugs into an electrical outlet. You can also charge the device from a USB port on a computer. During charging a tiny yellow LED on the inside of the frame will blink when battery power is low and blue when fully charged. Figure about an hour to charge the camera the first time.

If you turn on the glasses when battery power is low, the indicator will blink yellow and blue, then shut down. This is your cue to recharge the glasses before trying to use them.



Setting the Date and Time

Using a word processing program or text editor such as Notepad on your computer, enter the current date and time on one line in the following order:

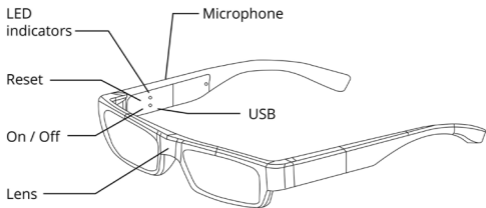
“year/month/day/hour/minutes/seconds”

Use numbers only. For example, 2016, September 2 at 11:30 A.M. would be entered as: 20160902113000

Tip: Add an extra minute or two to the time you enter to accommodate the steps that follow.

Save the data with the “timerset.txt” file name. (Microsoft Word, for example, enables you to save content as a “txt” file rather than in its default “docx” format.) Once you connect the glasses to the computer’s USB port and it comes up as an external drive, save or copy the timerset.txt file into the external drive’s root directory.

Note: Don’t save the timerset.txt file inside the DCIM folder, which is reserved for the video files captured by the camera.



Operation



With the battery charged and the cable removed from the eyeglasses, turn on the camera by holding down the On/Off button under the frame for three seconds. If you're right-handed, hold the eyeglasses upright with the glasses to the left. Look at the two tiny LED indicators as you operate the button. A blue LED will briefly light up indicating standby mode. Release the button. Then, a yellow LED will flash 10 times to indicate recording is about to begin. LED indicators go dark during recording. The eyeglasses should now be capturing live video, so you can put them on and look in the direction of subjects you want in the recording frame.



To pause video recording, quick-press the On/Off button. The blue LED will glow steadily, indicating Standby mode. The video will be automatically saved to a file.

To resume video recording, quick-press the On/Off button again. The yellow LED will flash 10 times, indicating that recording is about to start. When the LED goes dark, video recording begins in a new file.

To stop recording, hold the On/Off button for three seconds. The blue LED will quickly flash three times, indicating the camera has shut off.

Tip: Keep your head steady while recording. Rapid movement (pivoting or nodding) could momentarily smear the video. If possible, turn your head slowly when shifting your viewpoint.

The camera does not have macro focus, but you should be able to get as close as about 12-inches without losing clarity. Keep in mind that when objects you're shooting are that close, you should lower your eyes slightly in order to properly frame the view from the slightly-higher positioned lens of the camera.

Tip: Be aware that the microphone is on the frame's right side as you're wearing the glasses. That means on playback the audio captured from your right side will be louder than sound originating on your left side. If capturing a conversation is critical, try to position yourself so that your head is slightly turned to the left and the frame's right side is aimed toward the speaker.

Playback

You'll hear a three-note audio cue when plugging the Clear HD Video Glasses into your computer or unplugging the glasses. The device will appear as an external drive. For example, videos might appear under the D: drive and always in the DCIM subdirectory as in:

```
D:\DCIMMOV1000.avi
```

Videos are in the AVI format, and you'll need freely-available software (not included) such as the VLC Media Player to play them.

Use your computer's file manager to copy videos to your computer and/or delete them from the camera.

Note: The recording's date and run time are displayed in the bottom right corner of each video. The display cannot be disabled.

Frequently Asked Questions

Can the Clear HD Video Glasses be used to take photographs?

No. The camera is meant for recording video. You can grab still images from the video once it's playing in a computer.

Can the camera be set for loop recording?

No. Once the internal memory fills up, the camera will stop recording. You must transfer and delete files manually using your computer.

Can the Clear HD Video Glasses be used as a live webcam?

No. When the camera is plugged into a computer's USB port, you can only play and/or manage content that was previously recorded.

Can the camera record video while plugged into a USB power port?

No. The camera can only record while powered from its battery.

Can the recording resolution be changed?

No. Video is captured at 1280 x 720 pixels.

Can the audio be disabled during video recording?

No.

How much memory does a 15-minute file use?

Approximately 1GB.

What happens when a recording exceeds 15 minutes?

A new file is automatically started. Since it is contiguous, you shouldn't lose content.

Can the non-corrective lenses in the frame be replaced with prescription lenses?

An optician may be able to fit real eyeglasses into the frame, but custom-made frames are not offered. Alternatively, if your eyesight requires corrective vision, consider wearing contacts while using the Clear HD Video Glasses. If you must wear prescription glasses at the same time—and don't care about how foolish or attention-grabbing wearing two pairs of glasses at the same time looks—make sure to wear your prescription glasses under the Clear HD Video Glasses so as not to block the camera.

SPECIFICATIONS

Imaging sensor	1.3 MP (1/3" CMOS)
Video resolution	1280 x 720 (720p)
Lens	Fixed
Field of view	62° V/H
Minimum focal range	11.8" (30 cm)
Minimum illumination	1 Lux
Frame rate	30 fps
Video format	AVI
Continuous recording time	90 min.
Audio	Mono
Voice sampling	16 KHz
Internal storage	8GB
Card slot	None
Interface	USB 2.0
Cable length	31"
Charging time	About 1 hr.
Battery life	1.5 hr.
Battery charge	DC 5V 1A
Battery type	Embedded high-capacity lithium polymer (LiPo)
Storage temperature	-20° – 80°F (-29° – 27°C)
Compatible computers	Windows and Macintosh
Size	5.5" x 1.5" x 1.5" (14 x 3.8 x 3.8 cm) folded; 5.5" x 1.5" x 6" (14 x 3.8 x 15.2 cm) open
Weight	1.2 oz. (36 g)

Help

Thanks again for purchasing a SpyTec product! We appreciate your business and strive to make your experience the best possible. If you have any issues with your product, please contact us at support@spytec.com so that we can help you get things started.

Warranty

This Limited Warranty applies to physical goods sold by STI and lasts for a period of 90 days from the date of sale of the device. This Limited Warranty covers any manufacturing defects to the device or accessories encountered by normal use. This warranty does NOT cover damages resulting from improper use of the device (including the use of incompatible accessories such as chargers, storage devices, etc.), unauthorized modifications to the device, negligence, or from any environmental or natural disasters, or from loss or theft. This warranty requires proof of sale of the device from STI or from approved resellers only.

Devices that are covered will be repaired or replaced at STI's discretion. Devices requiring replacement will be fulfilled with a new or refurbished unit, or a similar unit if the original unit is no longer available.

To take advantage of our warranty, please go to: <http://www.spytec.com/return-policy/> and review our returns policy. If your device meets the above guidelines as well as the guidelines on our website, please click the button to proceed to the Return Authorization Form. In the event our on-line guidelines change, this warranty will supersede any newer changes. Once you have filled out the Return Merchant Authorization form, please wait for instructions. The date the form is filled out must not exceed 90 days from the date of sale.

SpyTec is a registered of Spy Tec International, 2019
All rights reserved.