

Spring 2015

Discover the **FUN** Within Your **REACH!**



HUNDREDS OF ACTIVITIES FOR ADULTS INSIDE!

Sports Leagues
Martial Arts
Fitness Classes
Hockey & Ice Skating
Dance Classes
Nature & Gardening
Ceramics & Sewing
BYOB Nights Out
Archery, Tennis & Fencing



SUMMER CAMPS
SIGN UP TODAY
First come, first served
See pages 13-33

Resident Lottery
Th, Mar 12 at NOON



POLAR BEAR POOL & ICE ARENA PASS SALE THROUGH MAY 9 - See page 9 for details!

Early Childhood Adventure Week

Supervisor: Amanda Heiman

Summer should be full of adventure! Join us weekly as our qualified summer staff plan crazy, wacky, and wild theme based adventures that are sure to spark creativity and interest within your child! From the Wild West to a week full of Balloons, your little adventurer will be skipping home smiling, laughing, and excited about what the next day will bring. Crafts, small and large group games, various activities, songs, and stories will fill the daily schedule. Come join us for an adventure of a summer . . . where no two weeks will be the same! Snack will be provided by the Park District. Children must be toilet trained. No swim days or field trips are scheduled.
Min 12/Max 32



Mad Science: In the Garden Camp

Supervisor: Amanda Heiman

"In The Garden" preschool camp offers young children an exciting introduction to basic environmental science. Each day is devoted to different aspects of the garden, allowing children to progressively enrich their understanding of how living things grow and how they interact with the environment around them. Children will perform hands-on experiments, play games, as well as enjoy a snack and story related to the theme. They will wrap up each day by illustrating their latest discoveries.
Min 10/Max 20

Summer Stay and Play

Supervisor: Amanda Heiman

Stay & Play will boost your child's independence and emphasize socialization with their peers, through play. Additionally, your child's fine motor skills, senses, and coordination will develop as they participate in daily planned activities like shaving cream art, obstacle course challenges, and songs. Qualified summer staff will create a nurturing environment that your child can't resist coming back to each day. Please note that this is not our Playschool program and is a play camp; however this is a great program for those transitioning into Playschool at the Park District after Labor Day this fall. No swim days or field trips are scheduled.
Class does not meet: 07/04

PROGRAM	AGES	DAY(S) & DATE(S)	TIME(S)	LOCATION	ACTIVITY #	RES/NR
Adventure Week 1	3-5	M-F, June 8-12	8:00-11:30A	Andersen Park	263000-01	\$125/\$188
Adventure Week 2	3-5	M-F, Jun 15-19	8:00-11:30A	Andersen Park	263000-03	\$125/\$188
Adventure Week 3	3-5	M-F, Jun 22-26	8:00-11:30A	Andersen Park	263000-05	\$125/\$188
Adventure Week 4	3-5	M-F, Jun 29 - Jul 3	8:00-11:30A	Andersen Park	263000-07	\$125/\$188
Adventure Week 5	3-5	M-F, Jul 6-10	8:00-11:30A	Andersen Park	263000-09	\$125/\$188
Adventure Week 6	3-5	M-F, Jul 13-17	8:00-11:30A	Andersen Park	263000-11	\$125/\$188
Adventure Week 7	3-5	M-F, Jul 20-24	8:00-11:30A	Andersen Park	263000-13	\$125/\$188
Adventure Week 8	3-5	M-F, Jul 27-31	8:00-11:30A	Andersen Park	263000-15	\$125/\$188
Adventure Week 9	3-5	M-F, Aug 3-7	8:00-11:30A	Andersen Park	263000-17	\$125/\$188
Adventure Week 10	3-5	M-F, Aug 10-14	8:00-11:30A	Andersen Park	263000-19	\$125/\$188
In the Garden Camp	3-5	M-F, Aug 17-21	9:00A-12:00P	Andersen Park	263050-01	\$233/\$350
In The Garden Camp	3-5	M-F, Aug 17-21	1:00-4:00P	Andersen Park	263050-02	\$233/\$350
Summer Stay & Play	2-3	M-F Jun 8 - Jul 3	9:00-10:30A	Stevenson Park	263001-01	\$250/\$375
Summer Stay & Play	2-3	M-F Jun 8 - Jul 3	11:00A-12:30P	Stevenson Park	263001-02	\$250/\$375
Summer Stay & Play	2-3	M-F, Jul 6-31	9:00-10:30A	Stevenson Park	263001-03	\$250/\$375
Summer Stay & Play	2-3	M-F, Jul 6-31	11:00A-12:30P	Stevenson Park	263001-04	\$250/\$375

These camps are not eligible for extended camp.



Jr. Camp SPARK

Supervisor: Amanda Heiman

Jump into a world of fantasy, adventure, and growth at Camp SPARK! Summer is a time to develop education you won't get at school - education in fun! At SPARK, we focus on developing SKILLS, fostering PLAY, providing ADVENTURE and promoting RECREATION for KIDS. This camp is sure to SPARK the spirit within you. Jr. SPARKers start to learn independence from parents as they develop individuality and friendships with fellow campers. Dexterity is practiced through arts and crafts to improve fine-motor skills and games are played to enhance hand-eye coordination.

Jr. Spark is different than other camps because we start our day with a swim lesson! For two straight weeks of camp your child will receive a 35 minute lesson by trained instructors, with the support of camp counselors. See sample daily schedule:

8:30AM	Check in at camp (in front of Rehm Pool)
8:45-9:25AM	Swim Lessons
9:25-9:45AM	Change & head to camp site (south side Rehm Park)
9:45-10AM	Snack time (provided by parents)
10-10:15AM	Large Group Time
10:15-10:45	Rotation #1
10:45-11AM	Rotation #2
11-11:30AM	Rotation #3
11:30-11:45AM	Clean-up
11:45-12PM	Large Group Time
12PM	Sign out

Schedule is subject to change based on the interest of the campers, staff needs, etc.

Min 12/Max 42

Come Dressed and Ready for Swimming Each Day!

PROGRAM	AGES	DAY(S) & DATE(S)	TIME(S)	LOCATION	ACTIVITY #	RES/NR
Jr. SPARK	4-6	M-F, June 8-19	8:30A-12:00P	Rehm Park	261000-01	\$350/525
Jr. SPARK	4-6	M-F, June 22 - Jul 3	8:30A-12:00P	Rehm Park	261000-02	\$350/525
Jr. SPARK	4-6	M-F, Jul 6 -17	8:30A-12:00P	Rehm Park	261000-03	\$350/525
Jr. SPARK	4-6	M-F, Jul 20-31	8:30A-12:00P	Rehm Park	261000-04	\$350/525
Jr. SPARK	4-6	M-F, Aug 3-14	8:30A-12:00P	Rehm Park	261000-05	\$350/525

These camps are not eligible for extended camp.



Allergy or Special Needs Accommodations

If your camper has an allergy or a special accommodation request, please let us know upon enrollment. While an allergy free campsite cannot be guaranteed, we will work with you to make the environment as safe as possible for your camper! West Suburban Special Recreation Association requests should be made 2 weeks in advance of camp start date.

Discover the
FUN
Within Your
REACH!
PARK DISTRICT OF OAK PARK

PLEASE NOTE: Summer Camps are not part of the Spring Lottery. Registration is first come, first served.

MINOR LEAGUE SPORTS CAMP

Supervisor: Liz Visteen

Minor League Sports Camp will help kids get ready for sports, build confidence and self-esteem, and makes sports fun! Throughout the summer, supportive counselors will teach all of the basic skills - throwing, catching, kicking, shooting, and batting - as campers are introduced to sports like soccer, baseball, softball, basketball, floor hockey, and golf through fun games and non-competitive challenges. Other recreational games will also be offered throughout the week to maximize the fun while keeping campers active. Min 8/Max 30

AGES	DAY(S) & DATE(S)	TIME(S)	LOCATION	ACTIVITY #	RES/NR
4-5	M-F, Jun 8 - 12	8:00-11:30A	Hatch School	226000-01	\$116/\$174
4-5	M-F, Jun 15 - 19	8:00-11:30A	Hatch School	226000-02	\$116/\$174
4-5	M-F, Jun 22 - 26	8:00-11:30A	Hatch School	226000-03	\$116/\$174
4-5	M-F, Jun 29 - Jul 3	8:00-11:30A	Hatch School	226000-04	\$116/\$174
4-5	M-F, Jul 6 - 10	8:00-11:30A	Hatch School	226000-05	\$116/\$174
4-5	M-F, Jul 13 - 17	8:00-11:30A	Hatch School	226000-06	\$116/\$174
4-5	M-F, Jul 20 - 24	8:00-11:30A	Hatch School	226000-07	\$116/\$174
4-5	M-F, Jul 27 - 31	8:00-11:30A	Hatch School	226000-08	\$116/\$174
4-5	M-F, Aug 3 - 7	8:00-11:30A	Hatch School	226000-09	\$116/\$174



ROOKIES SPORTS CAMP

Supervisor: Liz Visteen

(entering Grades 1-3) Rookies Sports Camp offers a great opportunity for your child to participate in a wide variety of sports and games throughout the summer such as soccer, baseball, basketball, floor hockey, track & field and dodgeball. Daily activities are a great balance of instruction, skill development, and both recreational and competitive games. Each camper will have the opportunity to benefit from all of the activities offered, regardless of skill level. The camp will also go on a fun field trip once each session to places like water parks or ball games and also visit one of the Park District pools three times per session. Rookies Sports Camp is a great option for parents looking for their children to receive some general sport instruction while giving them a chance to have fun, stay active, make new friends, and visit some cool new places.

Min 12/Max 56

GRADE IN FALL	DAY(S) & DATE(S)	TIME(S)	LOCATION	ACTIVITY #	RES/NR
1-3	M-F, Jun 8-12	8:00A-3:00P	Longfellow Park	226001-01	\$232/\$348
1-3	M-F, Jun 15-19	8:00A-3:00P	Longfellow Park	226001-02	\$232/\$348
1-3	M-F, Jun 22-26	8:00A-3:00P	Longfellow Park	226001-03	\$232/\$348
1-3	M-F, Jun 29 - Jul 3	8:00A-3:00P	Longfellow Park	226001-04	\$232/\$348
1-3	M-F, Jul 6-10	8:00A-3:00P	Longfellow Park	226001-05	\$232/\$348
1-3	M-F, Jul 13-17	8:00A-3:00P	Longfellow Park	226001-06	\$232/\$348
1-3	M-F, Jul 20-24	8:00A-3:00P	Longfellow Park	226001-07	\$232/\$348
1-3	M-F, Jul 27-31	8:00A-3:00P	Longfellow Park	226001-08	\$232/\$348
1-3	M-F, Aug 3-7	8:00A-3:00P	Longfellow Park	226001-09	\$232/\$348

Sign up for Extended Camp from 3-6pm

Supervisor: Mike Loszach

Need care past 3pm for your camper? Sign up for Extended Camp! We'll play games, do crafts, and more to re-energize after a long day of fun at regular camp. *To be eligible for Extended Camp, your camper must be enrolled in an eligible corresponding session of Camp. You must register separately for Extended Camp. See chart below!*

Min 12/Max 40

Extended Camp Site	ACTIVITY #	RES/NR
Longfellow Park	261009-01	\$90/\$135
Longfellow Park	261009-02	\$90/\$135
Longfellow Park	261009-03	\$90/\$135
Longfellow Park	261009-04	\$90/\$135
Longfellow Park	261009-05	\$90/\$135
Longfellow Park	261009-06	\$90/\$135
Longfellow Park	261009-07	\$90/\$135
Longfellow Park	261009-08	\$90/\$135
Longfellow Park	261009-09	\$90/\$135

PLEASE NOTE: Summer Camps are not part of the Spring Lottery. Registration is first come, first served.

MVP SPORTS CAMP

Supervisor: Liz Visteen

(entering Grades 4-7) MVP Sports Camp offers a great opportunity for your child to stay active this summer by participating in a wide variety of sports and games such as soccer, baseball, basketball, floor hockey, track & field and dodgeball. Daily activities are a great balance of instruction, skill development, and both recreational and competitive games. Each camper will have the opportunity to benefit from all of the activities offered, regardless of skill level. Plus, each session the camp will go on a fun field trip to places like water parks or ball games and also visit one of the Park District Pools three times per session. MVP Sports Camp is a great option for parents looking for their children to receive some general sports instruction while giving them a chance to have fun, stay active, make new friends, and visit some cool new places. Min 12/ Max 42

YOU THROW GIRL SPORTS CAMPS

Supervisor: Liz Visteen

(entering Grades 4-7) Show them what it really means to throw like a girl! Whether your daughter is a seasoned athlete or just likes to play sports recreationally, each girl will have the opportunity to participate in all of the fun activities offered throughout the summer including soccer, softball, basketball, floor hockey, dodgeball and many others. The camp will also go on a weekly sports-related field trip and visit Rehm pool 3 times a week. **Studies have shown that girls who participate in sports are healthier, have a higher self-esteem and better body image, and even do better academically. Help ensure that your daughter doesn't drop out of sports when she turns 13 by keeping her involved in programs like this that balance skill development, instruction, competition with teamwork, achievement, and fun!**

Min 12/Max 20

Sign up for Extended Camp from 3-6pm

Supervisor: Mike Loszach

Need care past 3pm for your camper? Sign up for Extended Camp! We'll play games, do crafts, and more to re-energize after a long day of fun at regular camp. *To be eligible for Extended Camp, your camper must be enrolled in an eligible corresponding session of Camp. You must register separately for Extended Camp. See chart below!*

Min 12/Max 40

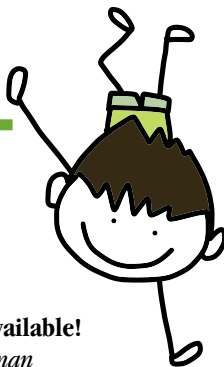


PROGRAM	GRADE IN FALL	DAY(S) & DATE(S)	TIME(S)	LOCATION	ACTIVITY #	RES/NR
MVP Sports Camp	4-7	M-F, Jun 8-12	8:00A-3:00P	Barrie Park	226002-01	\$232/\$348
MVP Sports Camp	4-7	M-F, Jun 15-19	8:00A-3:00P	Barrie Park	226002-02	\$232/\$348
MVP Sports Camp	4-7	M-F, Jun 22-26	8:00A-3:00P	Barrie Park	226002-03	\$232/\$348
MVP Sports Camp	4-7	M-F, Jun 29 - Jul 3	8:00A-3:00P	Barrie Park	226002-04	\$232/\$348
MVP Sports Camp	4-7	M-F, Jul 6-10	8:00A-3:00P	Barrie Park	226002-05	\$232/\$348
MVP Sports Camp	4-7	M-F, Jul 13-17	8:00A-3:00P	Barrie Park	226002-06	\$232/\$348
MVP Sports Camp	4-7	M-F, Jul 20-24	8:00A-3:00P	Barrie Park	226002-07	\$232/\$348
MVP Sports Camp	4-7	M-F, Jul 27-31	8:00A-3:00P	Barrie Park	226002-08	\$232/\$348
MVP Sports Camp	4-7	M-F, Aug 3-7	8:00A-3:00P	Barrie Park	226002-09	\$232/\$348
You Throw Girl	4-7	M-F, Jun 8-12	8:00A-3:00P	Holmes School	226003-01	\$232/\$348
You Throw Girl	4-7	M-F, Jun 15-19	8:00A-3:00P	Holmes School	226003-02	\$232/\$348
You Throw Girl	4-7	M-F, Jun 22-26	8:00A-3:00P	Holmes School	226003-03	\$232/\$348
You Throw Girl	4-7	M-F, Jun 29 - Jul 3	8:00A-3:00P	Holmes School	226003-04	\$232/\$348
You Throw Girl	4-7	M-F, Jul 6-10	8:00A-3:00P	Holmes School	226003-05	\$232/\$348
You Throw Girl	4-7	M-F, Jul 13-17	8:00A-3:00P	Holmes School	226003-06	\$232/\$348
You Throw Girl	4-7	M-F, Jul 20-24	8:00A-3:00P	Holmes School	226003-07	\$232/\$348
You Throw Girl	4-7	M-F, Jul 27-31	8:00A-3:00P	Holmes School	226003-08	\$232/\$348
You Throw Girl	4-7	M-F, Aug 3-7	8:00A-3:00P	Holmes School	226003-09	\$232/\$348

Extended Camp Site	ACTIVITY #	RES/NR
Longfellow Park	261009-01	\$90/\$135
Longfellow Park	261009-02	\$90/\$135
Longfellow Park	261009-03	\$90/\$135
Longfellow Park	261009-04	\$90/\$135
Longfellow Park	261009-05	\$90/\$135
Longfellow Park	261009-06	\$90/\$135
Longfellow Park	261009-07	\$90/\$135
Longfellow Park	261009-08	\$90/\$135
Longfellow Park	261009-09	\$90/\$135
Field Park	261008-01	\$90/\$135
Field Park	261008-02	\$90/\$135
Field Park	261008-03	\$90/\$135
Field Park	261008-04	\$90/\$135
Field Park	261008-05	\$90/\$135
Field Park	261008-06	\$90/\$135
Field Park	261008-07	\$90/\$135
Field Park	261008-08	\$90/\$135
Field Park	261008-09	\$90/\$135

PLEASE NOTE: Summer Camps are not part of the Spring Lottery. Registration is first come, first served.

PRESCHOOL, PLAYSCHOOL & JR. KINDERGARTEN



Playschool (Ages 2-3)

Supervisor: Amanda Heiman

Non-lottery program

This class is a great first independent experience for your child! Playschool is designed to provide a warm, nurturing environment for children ages 2-3. **This transition from home to school will emphasize the active development of your child's social, emotional, and cognitive skills. The caring, qualified teachers will focus on preschool preparedness such as: taking turns, following directions, listening, and sharing. Language development is supported through daily theme based activities that include ABC's, counting, story time, songs, games, and projects.**

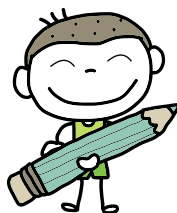
Preschool (Ages 3-4)

2, 3 or 5 day options available!

Supervisor: Amanda Heiman

Non-lottery program; DCFS-Licensed

Our Preschool program offers children an opportunity to participate in a variety of age appropriate activities as they develop socially, emotionally, and academically through PLAY. Classroom activities are planned to meet the varying needs of each child. Students will be introduced to letters and numbers as they explore different themes, shapes, colors, and concepts. Teachers focus on the development of each student: problem solving skills, ability to make real life connections, and peer relationships through everyday math, reading, social, and science discovery. Participants in preschool **MUST** be toilet-trained.



Pre-Kindergarten Program (Ages 4-5)

Supervisor: Amanda Heiman

Non-lottery program; DCFS-Licensed

Our Pre-Kindergarten program offers a developmentally appropriate, skill based class designed to meet the needs of children transitioning from preschool into kindergarten. Classroom activities are planned so that children can work independently, as well as in small and large groups. Curriculum materials focus on phonemic awareness, writing, math, and reading readiness while promoting independent thinking and problem solving skills. Our program goal is to provide academic opportunities that are critical in developing your child's foundation for future school success. To enhance our students learning for a bi-lingual future, this readiness program will introduce participants to basic colors, shapes, and numbers in Spanish as well as English.

New! Preschool Bootcamp (Ages 3-5)

Supervisor: Amanda Heiman

If your child is transitioning into a Pre-Kindergarten class, or rounding the corner into Kindergarten, give them the educational edge that they deserve. Pre-K bootcamp is designed to give your child short bursts of curriculum that they may face going into a Kindergarten classroom through literacy, math, problem solving, and science inquiry. If your child is enrolled in the Barrie T/TH preschool please include a packed lunch on bootcamp days!

Min 8/Max 18

New! Pre-Kindergarten Extension (Ages 4-5)

Supervisor: Amanda Heiman

Is your child starting kindergarten next year? With this extension program, children will easily transition into a full day kindergarten program, as they adapt to longer periods of curriculum and play. Children will need to bring their own lunch!

PROGRAM	AGES	DAY(S) & TIMES	TIMES	LOCATION	CODE	Monthly Tuition RES/NR
Playschool	2-3	M,W, Sep 9 - May 25	9:00-10:30A	Field Park	563004-01	\$95/\$143
Playschool	2-3	M,W, Sep 9 - May 25	11:00A-12:30P	Field Park	563004-02	\$95/\$143
Playschool	2-3	Tu,Th, Sep 8 - May 26	9:00-10:30A	Field Park	563004-03	\$95/\$143
Playschool	2-3	Tu,Th, Sep 8 - May 26	11:00A-12:30P	Field Park	563004-05	\$95/\$143
Playschool	2-3	Tu,Th, Sep 8 - May 26	9:00-10:30A	Barrie Park	563004-06	\$95/\$143
Playschool	2-3	Tu,Th, Sep 8 - May 26	11:00A-12:30P	Barrie Park	563004-07	\$95/\$143
Playschool	2-3	M,W,F, Sep 8 - May 27	11:00A-12:30P	Barrie Park	563004-09	\$143/\$215
Playschool	2-3	M,W,F, Sep 8 - May 27	9:00-10:30A	Barrie Park	563004-10	\$143/\$215
Preschool	3-4	M,W,F, Sep 9 - May 27	9:00A-12:00P	Barrie Park	563005-01	\$200/\$300
Preschool	3-4	M,W,F, Sep 9 - May 27	9:00A-12:00P	Longfellow Park	563005-02	\$200/\$300
Preschool	3-4	Tu,Th, Sep 8 - May 26	9:00A-12:00P	Barrie Park	563005-03	\$133/\$200
Preschool	3-4	Tu,Th, Sep 8 - May 26	9:00A-12:00P	Longfellow Park	563005-04	\$133/\$200
Preschool Bootcamp	3-5	Tu,Th, Sep 8 - May 26	12:00-2:00P	Barrie Park	563008-01	\$110/\$165
Preschool Bootcamp	3-5	M,W,F, Sep 9 - May 27	12:00p-2:00P	Longfellow Park	563008-02	\$165/\$248
Pre-Kindergarten	4-5	M-F, Sep 8 - May 27	9:00A-12:30P	Carroll Park	563007-01	\$385/\$578
Pre-Kindergarten	4-5	M-F, Sep 8 - May 27	9:00A-12:30P	Andersen Park	563007-02	\$385/\$578
Pre-Kindergarten Extension	4-5	M,Tu,Th,F, Sep 8 - May 27	12:30-2:30P	Carroll Park	563006-01	\$180/\$270

PRESCHOOL, PLAYSCHOOL & PRE-KINDERGARTEN

School Year Runs September 8, 2015 - May 27, 2016

OUR PROGRAM GOAL

Through age-appropriate play we create a nurturing environment that provides young children an opportunity to develop socially emotionally and cognitively through hands on exploration, experimentation and socialization.



Why Early Learning Matters

Young children are naturally very curious about the world around them, and they are capable of learning a great deal about its workings. Early childhood teachers provide developmentally-appropriate education that can open an exciting new world for your child. In addition to strengthening socialization skills – how to compromise, how to be respectful of others, and problem-solve – early learning programs provide a place where your child can gain a sense of self, explore, play with his or her peers, and build confidence!

Quality early education balances structured learning time in literacy, math and science with other activities such as arts & crafts, singing, and exploration play. Early childhood programming gives your child an opportunity to learn an approach to education that can last a lifetime.

Grow With Us

Our preschool program is PLAY based. Through PLAY children's emotional development is supported as they begin to socialize, communicate, problem-solve, and interact with their peers. Body awareness, as well as muscle growth takes place during PLAY; from scribbling with a crayon to drawing representational objects and from jumping in place to hopping on one foot. PLAY is an essential and critical part of each child's development and connects them to their imagination and creativity. PLAY is important to us because it:

- Builds social skills and relationships
- Develops communication, cooperation, and emotional expression
- Encourages responsible risk-taking, curiosity, creativity, and independence
- Develops a sense of self-control, self-confidence, and self-discipline

Through structured, organized-teacher facilitated play and unstructured, imaginative choice play, your child will be exposed to colors, numbers, letters, shapes, and relational concepts. Learning will be through large and fine motor activities, songs, games, dramatic play, science and projects. Teachers will provide you with monthly or weekly calendars outlining the curriculum and learning concepts your child will be introduced to in class, through play!

Open House/Welcome Nights

Prior to the start of school we will be holding an Open House at each of our centers. We ask that you bring your child to visit their new school, meet their teachers, learn the class schedule, and turn in ALL paperwork; this will give them an opportunity to familiarize themselves with the classroom and teachers prior to their first day of school. Dates/Times depend on the program your child is enrolled in:

Monday, August 24, 6:30-8:30pm

Andersen Pre-K (824 N. Hayes)
Barrie Preschool (1011 S. Lombard)
Carroll Pre-K (1125 S. Kenilworth)
Field M/W Playschool (935 Woodbine)

Tuesday, August 25, 6:30-8:30pm

Field T/Th Playschool (935 Woodbine)
Barrie T/Th and M,W,F Playschool (1011 S. Lombard)

Tuition

At the time of registration, 1st months tuition and a non-refundable \$50 administration fee is due. Monthly tuition payments can be found on the previous page. If your child is in multiple programs, we only require one \$50 administration fee – in the event you are charged more than once per individual child the \$50 fee will then be credited to your Park District account and applied to tuition payments. The \$50 administration fee is required pre-child.

Playschool, Preschool, & Pre-Kindergarten Information

These programs are NOT a part of the Lottery, and are first-come, first served. Registration for the current year 2014-2015 must be done in person, see page 4 for our registration sites.

Age Requirements: Children must be the minimum age by the first day of attendance.

First day of school: Tu, Sep 8, 2015

Last day of school: F, May 27, 2016

No School Days: The Park District Playschool, Preschool & Pre-Kindergarten Programs follow District 97's no school day calendar. Please note our schools may be closed additional dates due to voting at our community centers. When registering, non-attendance dates WILL NOT appear on your receipt. A calendar of these dates will be emailed to you.

Paperwork: Paperwork packets will be emailed to you, and must be filled out prior to start date. Prior to the start of school, we will be holding an Open House/Welcome Night at each of our centers. We ask that you bring your child to visit their new school, meet their teachers, learn the class schedule, and turn in ALL paperwork; this will give our Preschoolers an opportunity to familiarize themselves with the classroom and teachers prior to their first day of school.

Administration Fee: The non-refundable administration fee of \$50 aids in covering the program costs of things like: postage, newsletters & calendars, copy paper & ink, laminating, and processing fees.

2015-2016 Registration: Playschool, Preschool, & Pre-K programs are NON-lottery and registration is on a first come, first served basis:

1. Mon., February 2 at 9am, on-line priority registration for current 2015-2016 students/families begins (registration is on a first come, first served basis)
2. Wed., February 25, priority registration closes
3. Fri., February 27, on-line registration reopens to Oak Park residents not currently enrolled in Preschool/Playschool Programming
4. Mon., March 16, on-line registration opens to all non-residents
5. Fri., August 28 – online registration closes; all remaining registrations must be done in-person at RCRC or GRC

EARLY CHILDHOOD

Creative Collages

Supervisor: Amanda Heiman

Have you taken Creative Collages before? No worries . . . No repeats! Re-enrolling in the program will provide new creative opportunities for your child as the instructors plan new projects each session. Cut and paste your way to a different collage each day. Participants will work with a variety of materials such as felt, fabric, paper, wood, and beads to create abstract art. Through the exploration of various media your child is sure to love this program.

Min 8/Max 12

Constructive Construction

Supervisor: Amanda Heiman

Build with blocks, move dirt with diggers, and flatten sand with trucks. In this class your little engineer will work on their hand-eye coordination and balance as they build tall towers, make cars out of boxes, and dig trenches. Wear your hard hat and work boots as we get lifting, digging, and moving in this 6 week class.

Min 8/Max 12

New! FUN-gineering!

Supervisor: Amanda Heiman

With simple machines in mind, we'll learn the mechanical engineering concepts behind levers, gears, pulleys, and more; each week we will build a new project incorporating one of these! This is a great way to master the building skills that will serve your young engineer well into our Pre-Engineering with Legos class in the Fall.

Min 8/Max 12

Pint Size Sports & Pint Size Sports with Parent

Supervisor: Amanda Heiman

In this class a variety of sports equipment will be used to help your little athlete learn the basic skills needed in any sport: balance, coordination, motor development, and socialization! The fun, easy, and age appropriate activities our staff has planned will engage your child as they develop the motor movement needed in soccer, baseball, basketball, and tennis! This program will take place both indoors and out (weather permitting). Pint Size Sports is for ages 3-5, and Pint Size Sports with Parent requires parent participation in activities and is for ages 2-3.

Min 8/Max 18

Spring Break Programs for Ages 3-6

Spring Break Cabin Fever

Supervisor: Jessica Heim

Are you and your little one getting Cabin Fever from "Spring" Break? Why not drop them off to run off their energy with us? In this fun Cabin Fever event, we will have cabin and nature activities indoors in the Cubhouse and outdoors in the park, tell stories, and have s'mores over the "campfire". This is a drop off program.

Min 10/Max 15

Spring Break: Mad Science Five Senses

Supervisor: Amanda Heiman

Young children learn best through hands-on discovery, where they can develop their five senses and understanding. Each day will be devoted to the exploration of a different sense through experiments, games, projects and stories.

Min 10/Max 15

BABYSITTING

At The CUBHOUSE

Indoor Playground
at Stevenson Center



Ages 6 months to 12 years

\$3 per hour per child for residents

\$5 per hour per child for non-residents

We know it can be hard to squeeze in time to work out when you don't have child care at the ready. But now you can make time for your with babysitting available at the Cubhouse Indoor Playground during select fitness classes!

Babysitting Is Available For Select Fitness Classes

Parents/guardians must be participating in an eligible fitness class to take advantage of services at the Cubhouse. Get more info about our fitness classes on pages 10-11.

Eligible classes are listed online at pdop.org/babysitting

Please note: Reservations MUST be made 24 hours in advance, or service may not be available. See more information online!

MAKE TIME FOR YOU!

www.pdop.org/babysitting

PROGRAM	AGES	DAY(S) & DATE(S)	TIME(S)	LOCATION	# of CLASSES	ACTIVITY #	RES/NR
Creative Collages	3-5	Tu, Apr 7 - May 12	5:15-5:00P	Andersen Park	6	263381-01	\$55/\$83
Constructive Construction	3-5	M, Apr 6 - May 11	4:00-4:45P	Andersen Park	6	263383-01	\$55/\$83
Fun-gineering	3-5	Tu, Apr 7 - May 12	4:00-4:45P	Andersen Park	6	263385-01	\$55/\$83
Nature Tots with Adult	2-3	Th, Apr 9 - May 14	4:00-4:45P	Fox Park	6	263746-01	\$55/\$83
Pint Size Sports	3-5	F, Apr 10 - May 15	4:00-4:45P	Fox Park	6	263335-01	\$55/\$83
Pint Size Sports	3-5	F, Apr 10 - May 15	5:00-5:45P	Fox Park	6	263335-02	\$55/\$83
Pint Size Sports with Parent	2-3	F, Apr 10 - May 15	6:00-6:45P	Fox Park	6	263335-03	\$55/\$83
Spring Break Cabin Fever	4-6	Th, Apr 2	1:00-4:00P	Stevenson Park	1	261910-01	\$30/\$45
Mad Science: 5 Senses Camp	3-5	M-F, Mar 30 - Apr 3	9:00A-12:00P	Andersen Park	5	163050-01	\$220/\$330

Fencing (Beginner through Advanced)

Supervisor: Chad Drufke

En garde! Diana Unger, a certified coach with the United States Fencing Association with more than 25 years of fencing experience, will teach you the basics of fencing. **Fencing requires patience, concentration, discipline, and self-awareness. Self-confidence, self-control, and emotional strength gained from this sport will lead to a healthier lifestyle.** Weapons, jackets, and masks will be provided and shared among classmates. Participants must obtain a \$5 US Fencing Membership prior to the first day of class. Min 4/Max 10

Flag Football

Supervisor: Chad Drufke

Are you ready for some football? This class is designed to teach and enhance the skills of our future stars. Proper techniques on passing, receiving, blocking, and kicking will be covered. Breakdown of offensive and defensive strategies will also be covered. Teamwork and positive play are highly stressed, but our main objective is to have fun. Instructor: Park District Staff Min 6/Max 21

Girls' Field Hockey

Supervisor: Chad Drufke

Looking to join one of the fastest growing girls' sports? This class focuses on building individual and team field hockey skills. Instruction and practice drills emphasize stick handling, ball control, positioning, offensive and defensive tactics, rules, and conditioning. The clinics are run by extremely qualified field hockey coaches with college field hockey experience. Equipment will be provided by the Park District.

YOUTH SPORTS

Golf Lessons

Supervisor: Chad Drufke

In addition to the golf course Fresh Meadow has a world class Learning Center which provides golf lessons for all skill levels. Group instruction is an excellent way to receive the essential information on not only how to swing but how to putt, chip, and play the game better! (6 to 1 ratio student to teacher.) The Learning Center at Fresh Meadow Golf Club is located at 11302 Cermak Road in Hillside, IL. Min 6/Max 20

Youth Golf League

Supervisor: Chad Drufke

Participate in this new youth golf league that takes place at Fresh Meadow Golf Club located at 2144 South Wolf Road in Hillside. Each participant will play 9 holes every Thursday with the 1st tee time starting as early as 1:30 p.m. Participants will sign up for their tee time each week for the following week. The \$69 fee goes towards prizes during the club championship which takes place on the final Thursday (8/13). **Each week the participant is responsible for a \$13 green fee for the 9 holes.** Different games will be utilized to make it an enjoyable experience for all! Parents are required to attend a mandatory parents meeting either 5/28 or 6/4 6 pm at Fresh Meadow Learning Center which is located at 11302 Cermak Road in Hillside. Min 6/Max 40

Resident Lottery

**Noon on Thursday
March 12 (p. 98)**

PROGRAM	AGES	DAY(S) & DATE(S)	TIME(S)	LOCATION	# of CLASSES	ACTIVITY #	RES/NR
Beginning Fencing	10-11	Th, Apr 9 - May 28	4:30-5:25P	Fox Park	8	226280-01	\$117/176
Beg./Cont. Fencing	11-18	Th, Apr 9 - May 28	5:30-6:25P	Fox Park	8	226280-02	\$117/176
Advanced Fencing	11-18	Th, Apr 9 - May 28	6:30-7:25P	Fox Park	8	226282-01	\$117/176
Flag Football	5-7	Th, Apr 9 - May 7	5:30-6:30P	Fox Park	5	226203-01	\$55/83
Flag Football	6-8	Th, May 21 - June 18	5:30-6:30P	Fox Park	5	226203-02	\$55/83
Flag Football	6-8	Sa, Apr 4 - May 2	12:00-1:00P	Andersen Park	5	226203-03	\$55/83
Flag Football	6-8	Sa, Apr 4 - May 2	1:00-2:00P	Andersen Park	5	226203-04	\$55/83
Field Hockey	Grades 3-4	M, Apr 6 - May 18	4:00-5:00P	RCRC	7	226265-01	\$75/113
Field Hockey	Grades 5-6	M, Apr 6 - May 18	5:00-6:00P	RCRC	7	226265-02	\$75/113
Field Hockey	Grades 7-8	M, Apr 6 - May 18	5:00-6:00P	RCRC	7	226265-03	\$75/113
Youth Golf Lessons	5-14	Sa, Apr 4-25	11:00A-12:00P	Offsite Facility	4	226320-01	\$129/194
Youth Golf Lessons	5-14	Sa, May 2-23	11:00A-12:00P	Offsite Facility	4	226320-02	\$129/194
Youth Golf Lessons	5-14	Su, Apr 5-26	11:00A-12:00P	Offsite Facility	4	226320-03	\$129/194
Youth Golf Lessons	5-14	Su, May 3-24	11:00A-12:00P	Offsite Facility	4	226320-04	\$129/194
Youth Golf League	7-17	Th, June 11 - Aug 13	1:30-4:00P	Offsite Facility	10	226321-01	\$69/104