

Subject
Control Box Keypad Replacement

## System or Parts affected

Underhood (V90xxxx / V91xxxx) except "G" (V90Gxxx) P/N# 3550779	PREDATAIR (H60000x / H4000x) P/N# 3550780
--	--



This Keypad replacement does not include the LED Display screen. If the LED Display screen is faulty a new Control Box is required.

## Symptoms:

- Change the keypad if the buttons become non-responsive

## Overview:

### Removal:

1. Unplug the control box from the flat white 4-pin connector at the end of the control box cable for the Underhood System or the black 4-pin connector for the PREDATAIR. Remove the 4 screws holding the control box to the mounted location (Figure A).



**Underhood**



**Figure A**



**PREDATAIR**

2. Remove the 4 corner screws from the back of the control box (Figure B).



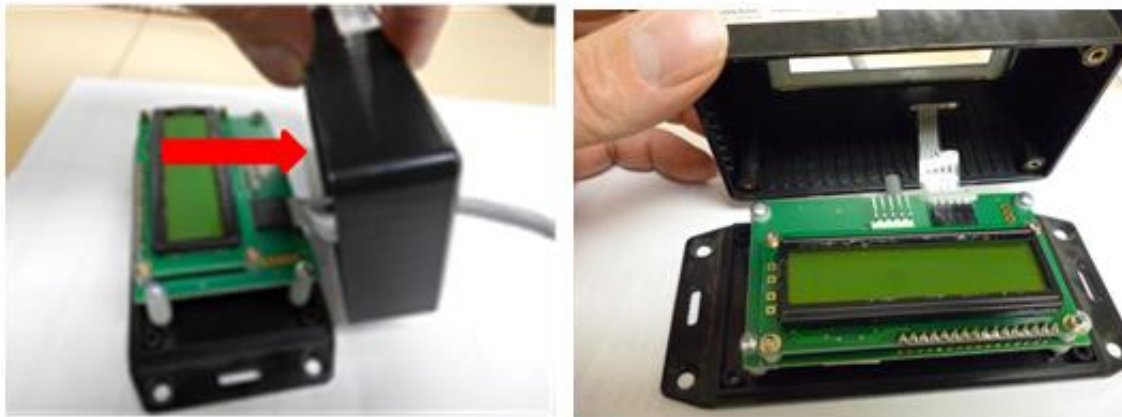
**Figure B**

Document	Version	Department	Revision Details	Revised by	Tech	Engineering	Implemented
EXT-AII-123	A	Tech	Document Release	SP 17 Mar 2015	RD 17 Mar 2015	N/A	8 May 2015
EXT-AII-123	B	Tech	Added instructions	SP 17 Jul 2015	N/A	N/A	17 Jul 2015

## Subject

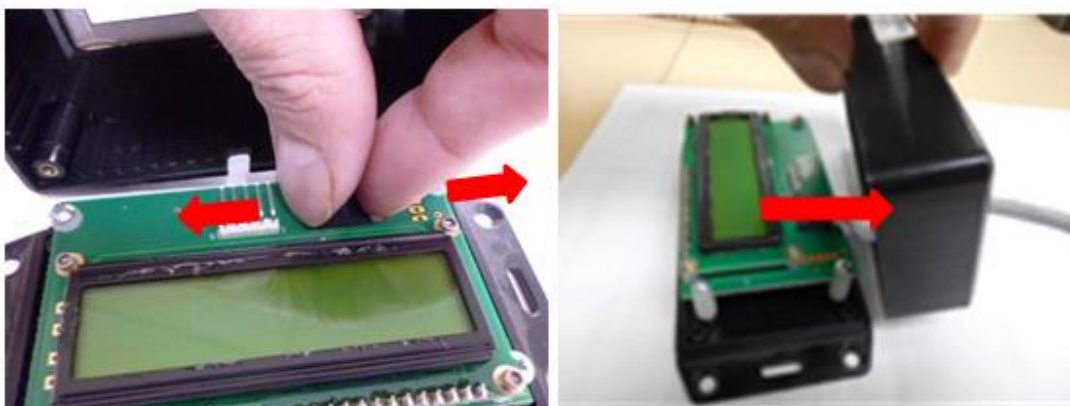
### Control Box Keypad Replacement

- Lift the top of the control box straight up and rotate the top of the control box like a clam shell. Pull carefully – there is a flex cable attached to pc board (Figure C).



**Figure C**

- Remove the connector from the pc board by grasping the connector firmly, moving the connector slightly side to side while pulling towards the ribbon cable away from the LCD screen (Figure D).



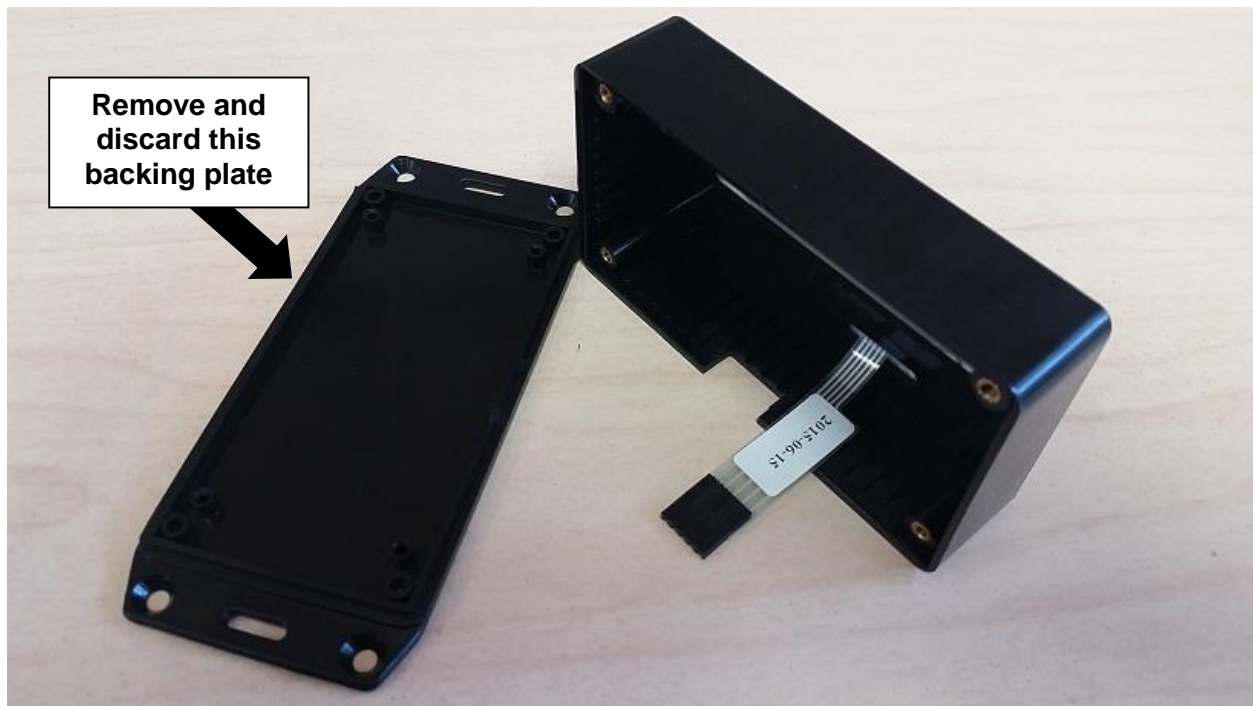
**Figure D**

Document	Version	Department	Revision Details	Revised by	Tech	Engineering	Implemented
EXT-AII-123	A	Tech	Document Release	SP 17 Mar 2015	RD 17 Mar 2015	N/A	8 May 2015
EXT-AII-123	B	Tech	Added instructions	SP 17 Jul 2015	N/A	N/A	17 Jul 2015

Subject
Control Box Keypad Replacement

## Installation:

1. Remove the back cover from the new control box and discard as we suggest re-using the old backing plate. (Figure E)
2. Slide the new cable on by pushing on the connector edge (do not push or pull on the flex cable) and gently push the connector down so it slides into the slot on the circuit board.
3. Gently push the new top straight down over the circuit. You may need to wiggle the top back and forth to get it past the corners of the circuit board.
4. Replace the 4 corner screws in the back cover (Figure B).
5. Plug the control box back into the flat white 4-pin connector (making sure the keypad works correctly) and remount the control box to the original location.



**Figure E**

Document	Version	Department	Revision Details	Revised by	Tech	Engineering	Implemented
EXT-AII-123	A	Tech	Document Release	SP 17 Mar 2015	RD 17 Mar 2015	N/A	8 May 2015
EXT-AII-123	B	Tech	Added instructions	SP 17 Jul 2015	N/A	N/A	17 Jul 2015