

Configuring AMAG Symmetry SMS

Versions 6.0, 6.2

Configuring Third-Party Programs

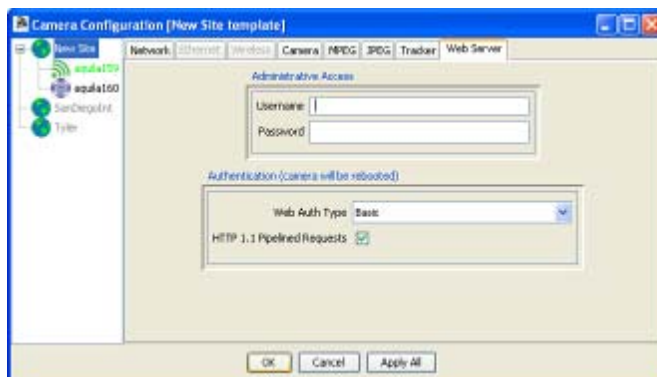
SightLogix devices are used with two types of third-party programs: VMS programs, which display video, GPS coordinates, and alarm and other information from SightLogix devices, and command and control systems (C2), which are integrated systems for monitoring multiple types of sensors. Currently, SightLogix supports a range of VMS programs and control systems. Additional programs and systems will be supported in the future.

In order for a VMS program to display the video and alarms received from SightLogix devices, the program must be configured properly, both to open communication with devices and to respond appropriately to alarm information. The actual configuration steps differ, depending on the program. However, most programs require the following:

- > **Setting web authentication between the SightLogix device and the VMS.** This includes entering the username and password (the default username is *sightlogix* or *root*, and the default password is *push2edg*). It is recommended that you change both defaults.

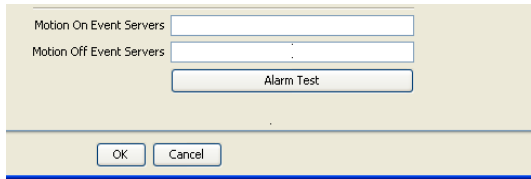
It also includes changing to digest web authentication if this more secure web authentication is supported by the individual VMS program. (By default, SightSensors are set up for basic authentication, which is supported by all VMS programs.)

You set both the web username/password and the authentication type from the Web Server dialog (right-click a device icon in the SightMonitor camera tree → Configure → Web Server):



- > **Adding SightSensors as AXIS-211 devices** (except when indicated); adding SightTrackers as AXIS 213.
- > **Specifying the actions (or events) that occur when an alarm is received.** This can include, depending on the program: audio alerts, automatic recording during an alarm, bookmarks inserted into recorded video to signal the start or end of an alarm, etc.

- > **Testing that alarm information is relayed from a SightLogix device to the VMS program.**
The Alarm Test option on the Camera (right-click device icon→Configure) simulates an alarm.

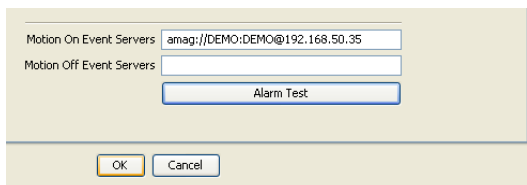


The following sections provide general guidance on how to configure the VMS programs that have been tested with SightLogix devices. However, for detailed, specific information, see the documentation that came with the particular VMS program.

AMAG Symmetry SMS versions 6.0, 6.2

When using the Symmetry Security Management System (SMS) from AMAG Technology, the first step is to add the AMAG URL to the Camera dialog in the Coordination System using the following syntax, which incorporates the username, password, and IP address of the AMAG Symmetry server:

amag://username:password@server-IP-address

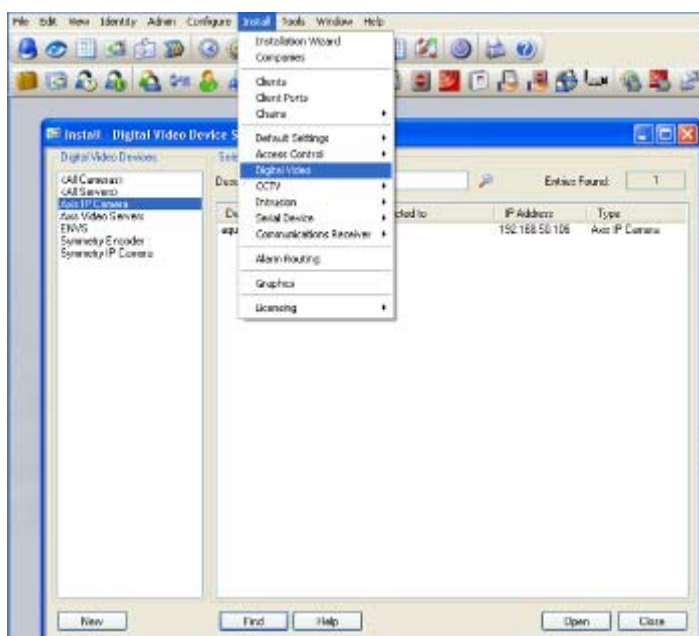


Click OK.

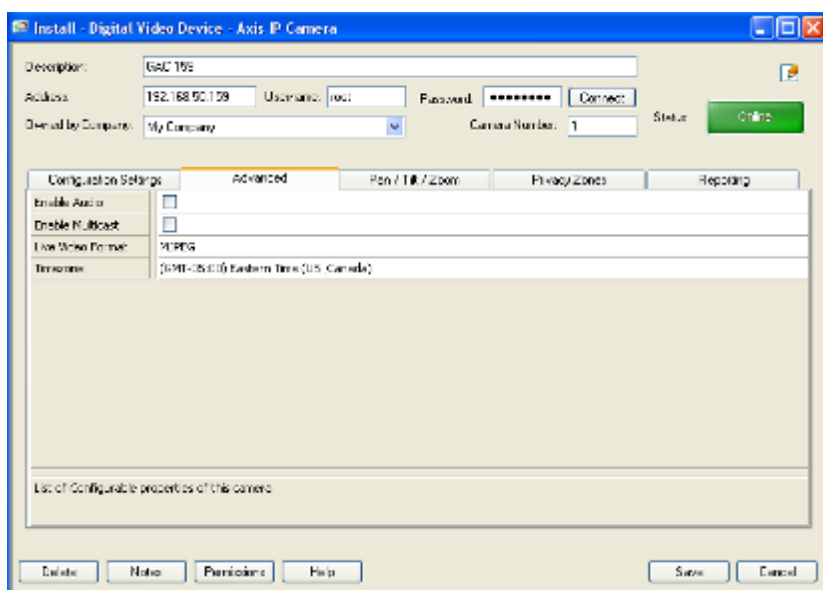
SMS Version 6.2 Note: To allow the virtual joystick to function properly, disable http 1.1 pipeline support on the webserver of the Coordination System.

Adding SightLogix devices

1. Open the Symmetry Professional with Video Management program and from the Install menu, choose Digital Video.



2. Select Axis IP Camera and click New (at bottom). This opens the following dialog.



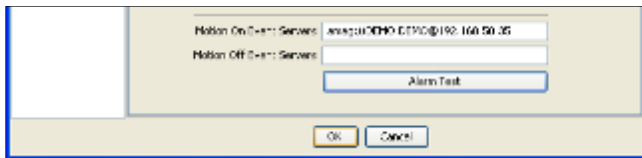
3. Enter the following:
 - The name (description) you want to assign to the camera.
 - IP address of the SightLogix device.
 - Username (*root* or *sightlogix*) and password (*push2edg*)
4. Select MPEG4 and choose a time zone.
5. Click Save. This closes the dialog.

Viewing video and alarms

To view the video, click View → Digital Video → Virtual Matrix.



Alarms are automatically set up for motion on events coming from the SightLogix device. To test that alarms are received at Symmetry Professional Video Management, go to SightMonitor's Camera dialog for the device (right-click the device icon → Configure → Camera) and click Alarm Test.



In the Event Viewer, you should see the alarm event. To clear it: right-click the alarm to open it and then clear it.

View - Alarms					
All Alarms					
What	Where	Time	Date	Priority	
Motion Alarm	SightTracker - Total Alarms:966 (SightTracker ST1-000000206)	22:48	05/20/2009	40	
Motion Alarm	SightSensor - TargetID:97493 zone:'Default' rule='None' (SightSensor DS100-000000202)	22:48	05/20/2009	40	
Motion Alarm	SightTracker - Total Alarms:965 (SightTracker ST1-000000206)	22:46	05/20/2009	40	
Motion Alarm	SightSensor - TargetID:97492 zone:'Default' rule='None' (SightSensor DS100-000000202)	22:46	05/20/2009	40	

Copyright © 2011 SightLogix. All rights reserved.

www.sightlogix.com

SightLogix, SightSensors, and SightTrackers are trademarks of SightLogix, Inc.

DiBos and AutoDome are registered trademarks of Bosch Security Systems, inc.

DVTel is a registered trademark of DVTel, Inc.

Genetec is a registered trademark and Omnicast is a trademark of Genetec Inc.

GOOGLE is a trademark of Google Inc.

Lenel and OnGuard are registered trademarks of Lenel Systems International, Inc.

NetDVMS is a registered trademark of On-Net Surveillance Systems, Inc.

NICE is a trademark of NICE Systems Ltd.

Pelco is a trademark of Pelco.

Proximex Surveillint™ is a trademark of Proximex Corporation.

Symmetry is a registered trademark of Group 4 Technology Ltd.

Verint is a registered trademark of Verint Systems Inc.

XProtect is a registered trademark of Milestone Systems A/S.

All other trademarks are the property of their respective owners.

SightLogix is a licensee of the GNU General Public License (GPL). You can request a copy of the GPL-licensed source code used in this product from a SightLogix sales office.

No part of this document may be reproduced or transmitted in any form or by any means, electronic or mechanical, for any purpose, without the express written permission of SightLogix.

The information in this document is distributed on an “As is” basis and without warranty. While every precaution has been taken in the preparation of this document, SightLogix assumes no responsibility for errors or omissions or for any damages resulting from the use of the information contained herein.