

Configuring Honeywell

- *Honeywell DVM version 200.2.5788*
- *Honeywell Enterprise Alpha version 5.86*

Configuring Third-Party Programs

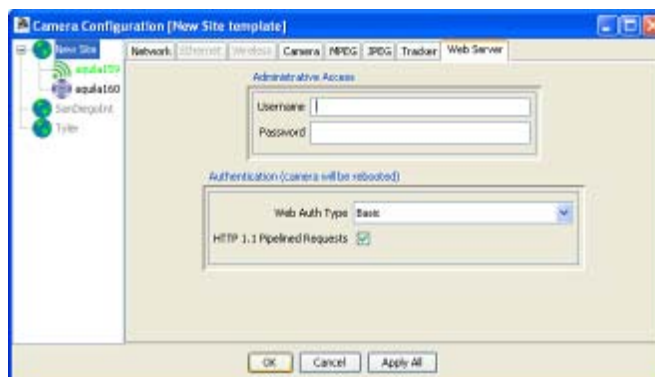
SightLogix devices are used with two types of third-party programs: VMS programs, which display video, GPS coordinates, and alarm and other information from SightLogix devices, and command and control systems (C2), which are integrated systems for monitoring multiple types of sensors. Currently, SightLogix supports a range of VMS programs and control systems. Additional programs and systems will be supported in the future.

In order for a VMS program to display the video and alarms received from SightLogix devices, the program must be configured properly, both to open communication with devices and to respond appropriately to alarm information. The actual configuration steps differ, depending on the program. However, most programs require the following:

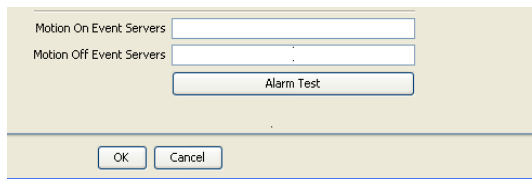
- **Setting web authentication between the SightLogix device and the VMS.** This includes entering the username and password (the default username is *sightlogix* or *root*, and the default password is *push2edg*). It is recommended that you change both defaults.

It also includes changing to digest web authentication if this more secure web authentication is supported by the individual VMS program. (By default, SightSensors are set up for basic authentication, which is supported by all VMS programs.)

You set both the web username/password and the authentication type from the Web Server dialog (right-click a device icon in the SightMonitor camera tree → Configure → Web Server):



- > **Adding SightSensors as AXIS-211 devices** (except when indicated); adding SightTrackers as AXIS 213.
- > **Specifying the actions (or events) that occur when an alarm is received.** This can include, depending on the program: audio alerts, automatic recording during an alarm, bookmarks inserted into recorded video to signal the start or end of an alarm, etc.
- > **Testing that alarm information is relayed from a SightLogix device to the VMS program.** The Alarm Test option on the Camera (right-click device icon→Configure) simulates an alarm.



The following sections provide general guidance on how to configure the VMS programs that have been tested with SightLogix devices. However, for detailed, specific information, see the documentation that came with the particular VMS program.

Honeywell

This section describes how to set up the following Honeywell systems. Refer to the preferred section.

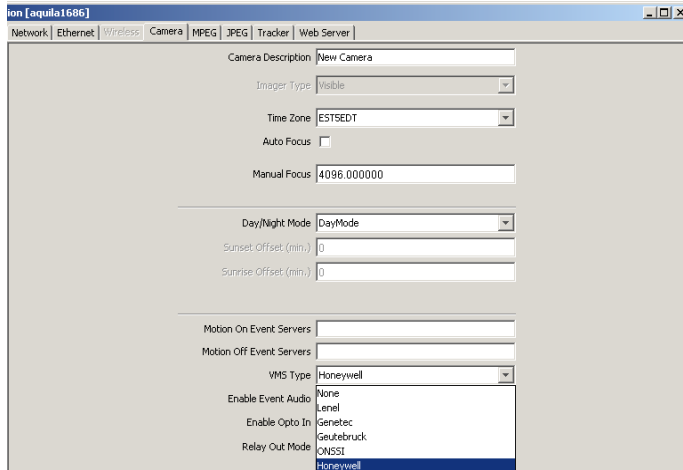
- Honeywell DVM version 200.2.5788
- Honeywell Enterprise Alpha version 5.86

Honeywell DVM version 200.2.5788

SightLogix devices are qualified to work with Honeywell Digital Video Manager (DVM) version 200.2.5788.

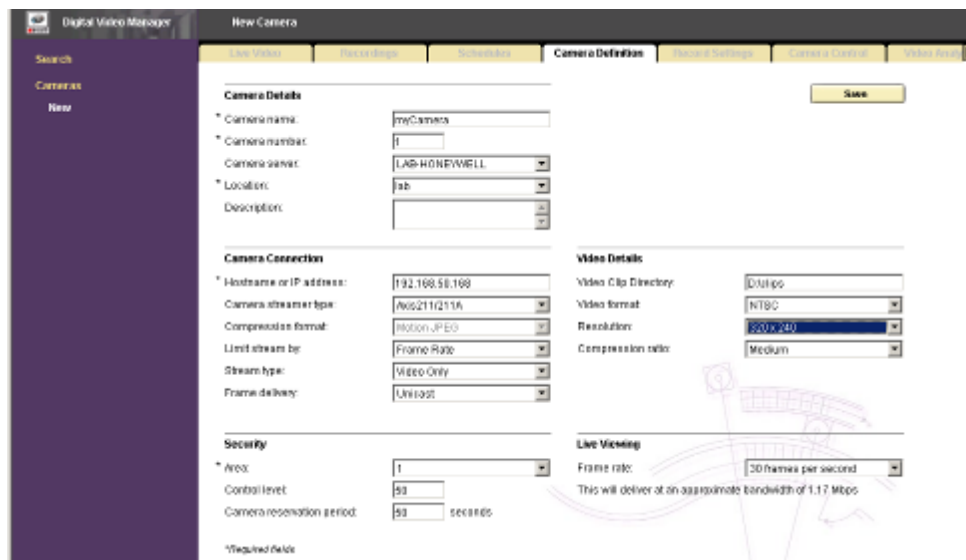
Before adding SightLogix devices to the Honeywell system, first change the default username and password in the SQL Server Enterprise Manager (tblstreamer). The default username is *sightlogix* or *root*, and the default password is *push2edg* though you should change the defaults to be unique for your site. If you're adding SightSensors, change the username and password for Axis 211 devices; for adding SightTrackers, change the username and password for Axis 213 devices.

In the SightMonitor, select the VMS type to be Honeywell for each device you're adding as follows: In the SightMonitor device tree, right-click the icon, choose Configuration, and open to the Camera tab. From the VMS Type dropdown menu, choose Honeywell. Click Save.



Add the SightLogix device to the Honeywell DVM:

With Cameras selected at left, open to the Camera Definition tab and click New:



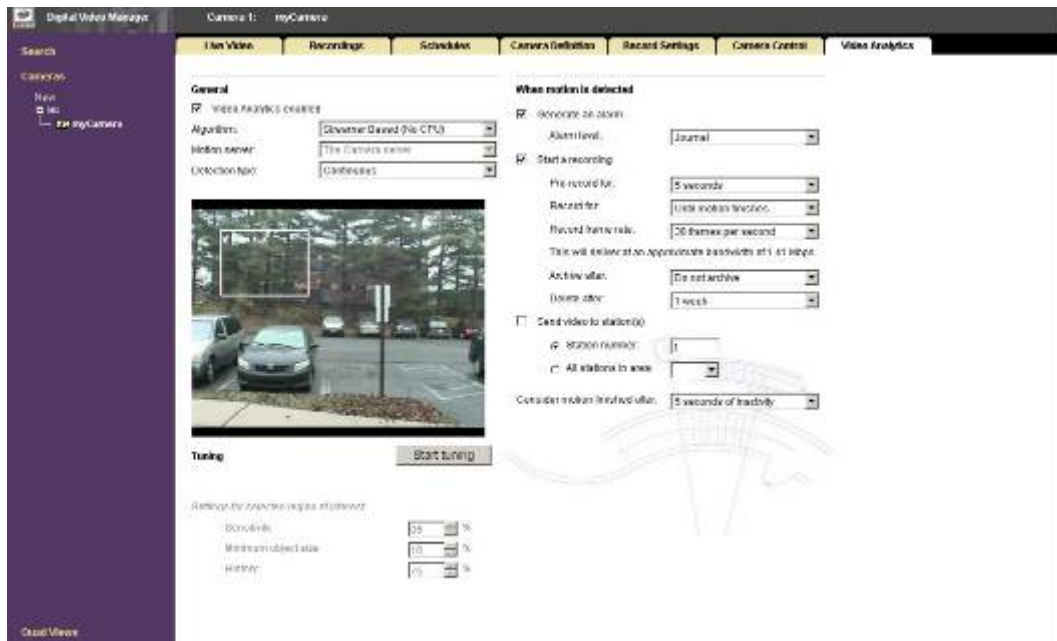
Provide the following information:

Camera name, number, and server	site-specific
Location	site-specific
Hostname or IP address	site-specific
Camera streamer type	Axis211/211A for SightSensors; Axis 213 for SightTrackers
Area	site-specific (assign a number)
Video clip directory	site-specific
Video format	NTSC
Resolution:	320x240

Click Save.

Set the motion detection alarms. Open the Video Analysis tab (make sure the appropriate camera is selected at left) and do the following information:

- Enable the checkbox for Video Analytics Enabled.
- Set Algorithm to Stream Based (No CPU).
- Set Detection Type as Continuous.
- Choose other settings (alarm level, pre-recording times, etc.) as required for your site.



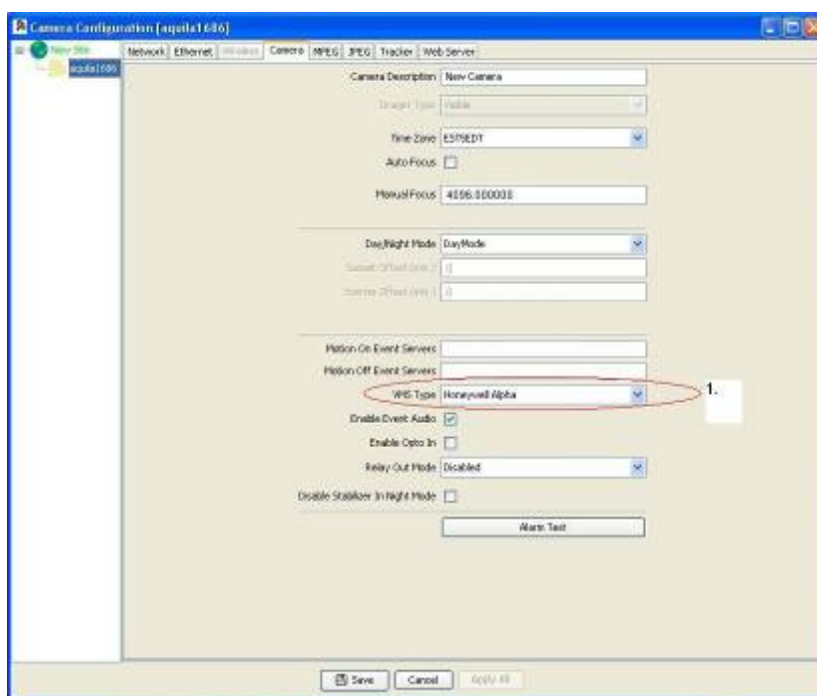
To view video, go to the Live Video tab. To set recording parameters, go to the Recordings tab.

Honeywell Enterprise Alpha version 5.86

SightLogix devices are qualified to work with Honeywell Enterprise NVR System Alpha Technology Version 5.86.

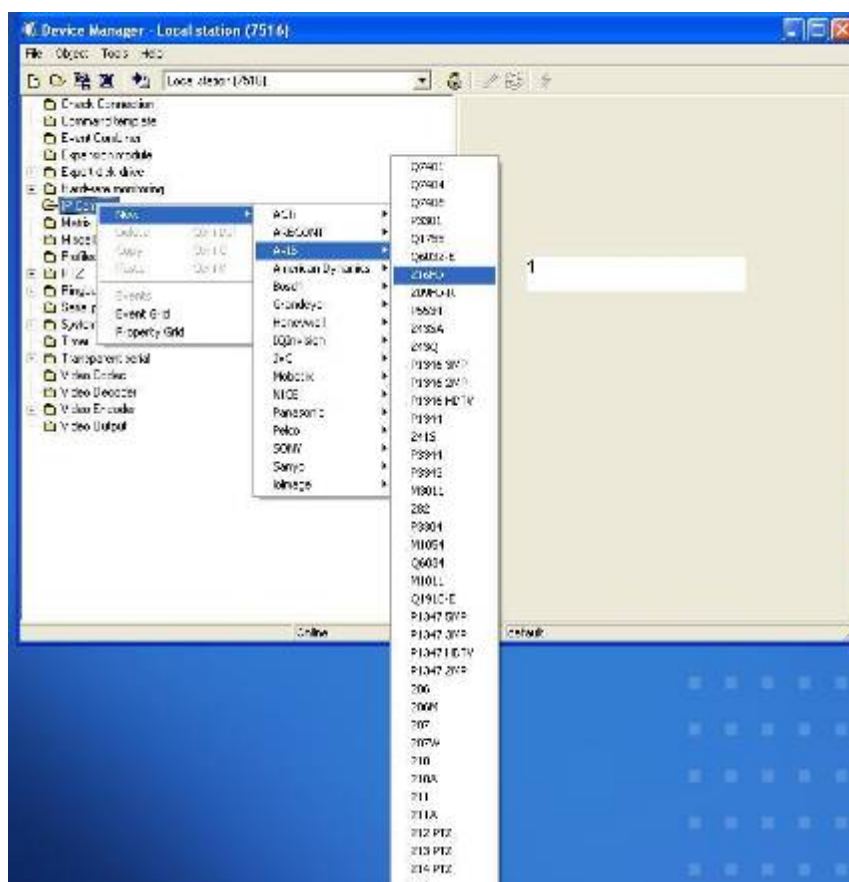
Before you begin, you will need Camera firmware 4.4.5953 and CS 4.4.3772.

In the SightMonitor, set the VMS type to Honeywell Alpha as follows: In the SightMonitor device tree, right-click the icon, choose Configuration, and then open to the Camera tab. From the VMS Type drop down menu, choose Honeywell Alpha. Click Save.

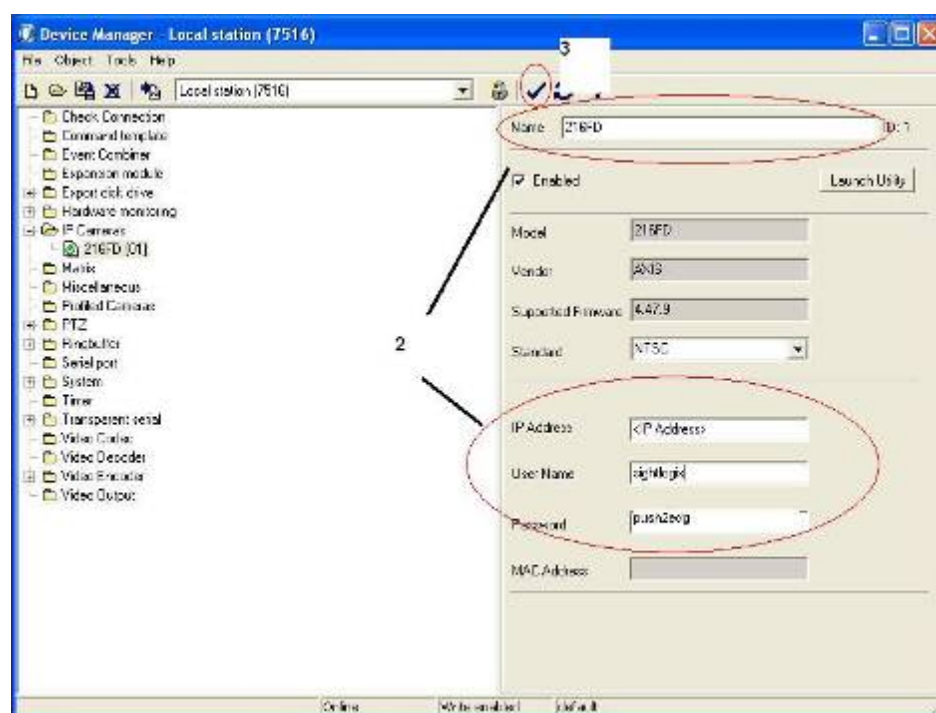


To add a SightSensor to the Honeywell NVR system, follow these steps.

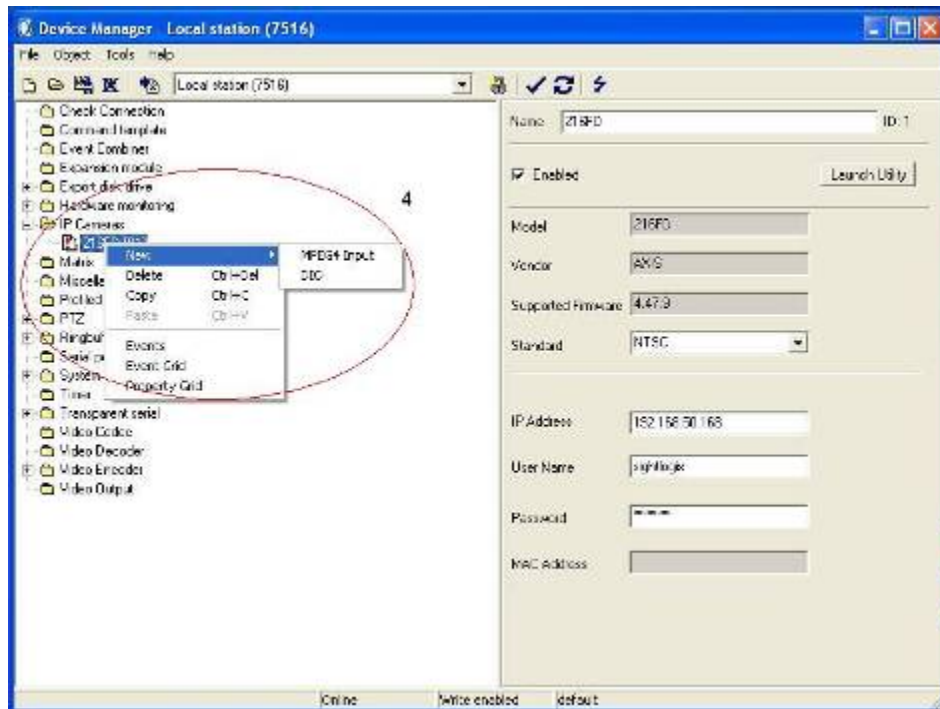
1. Right click the IP Camera folder. Choose New and then choose Axis 216FD as shown.



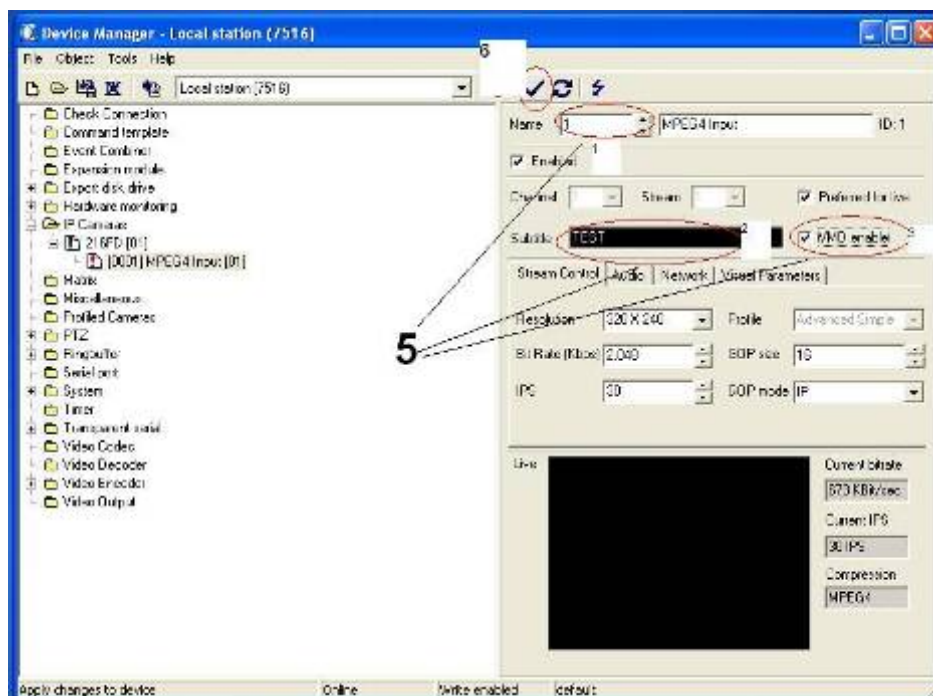
2. Enter the IP address, User Name and Password.



- Click the check mark icon to update settings.
- Right click the IP camera name you just created and then choose New and MPEG4 Input as shown.

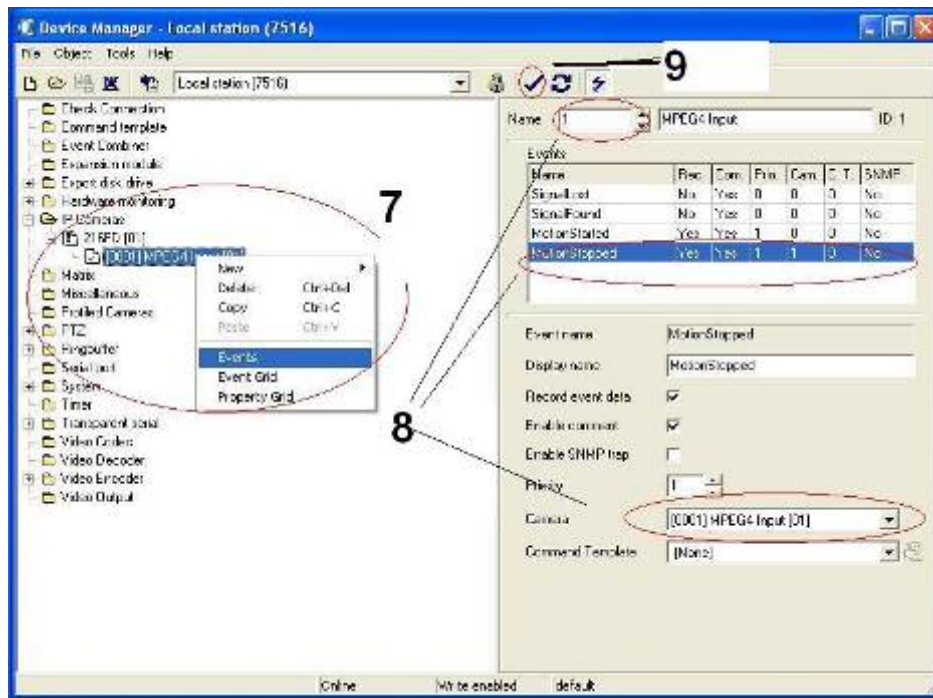


5. Enable VMD, enter a Subtitle (optional), and select a Name other than 0.

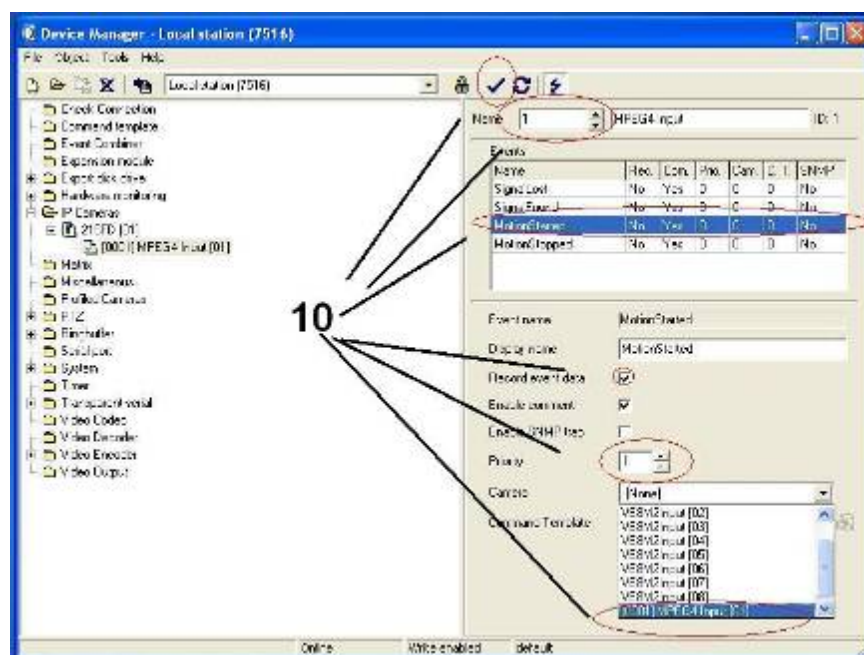


- Click the check mark icon to update Settings. You should be able to preview video.

7. Enable alarms by creating new Events as shown in the section labeled 7.



8. In the same dialog box, set the following parameters:
- Select a Name other than 0.
 - Select MotionStopped in the Event pane.
 - Select Record event data.
 - Select priority (accordance to your site policy).
 - Select the Camera Input.
9. Click the check mark icon to update settings.
10. Repeat steps 8 and 9 for another MotionStarted event.



Viewing video and alarms

To view the video and any alarms that have been generated, use the View application.



Copyright © 2011 SightLogix. All rights reserved.

www.sightlogix.com

SightLogix, SightSensors, and SightTrackers are trademarks of SightLogix, Inc.

DiBos and AutoDome are registered trademarks of Bosch Security Systems, inc.

DVTel is a registered trademark of DVTel, Inc.

Genetec is a registered trademark and Omnicast is a trademark of Genetec Inc.

GOOGLE is a trademark of Google Inc.

Lenel and OnGuard are registered trademarks of Lenel Systems International, Inc.

NetDVMS is a registered trademark of On-Net Surveillance Systems, Inc.

NICE is a trademark of NICE Systems Ltd.

Pelco is a trademark of Pelco.

Proximex Surveillint™ is a trademark of Proximex Corporation.

Symmetry is a registered trademark of Group 4 Technology Ltd.

Verint is a registered trademark of Verint Systems Inc.

XProtect is a registered trademark of Milestone Systems A/S.

All other trademarks are the property of their respective owners.

SightLogix is a licensee of the GNU General Public License (GPL). You can request a copy of the GPL-licensed source code used in this product from a SightLogix sales office.

No part of this document may be reproduced or transmitted in any form or by any means, electronic or mechanical, for any purpose, without the express written permission of SightLogix.

The information in this document is distributed on an "As is" basis and without warranty. While every precaution has been taken in the preparation of this document, SightLogix assumes no responsibility for errors or omissions or for any damages resulting from the use of the information contained herein.