

March Network Visual Intelligence

Version R65

Configuring Third-Party Programs

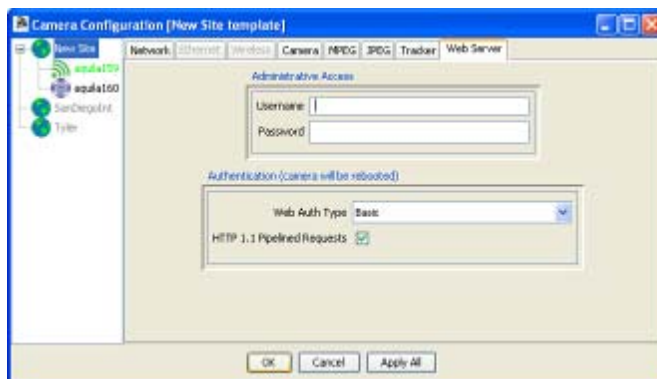
SightLogix devices are used with two types of third-party programs: VMS programs, which display video, GPS coordinates, and alarm and other information from SightLogix devices, and command and control systems (C2), which are integrated systems for monitoring multiple types of sensors. Currently, SightLogix supports a range of VMS programs and control systems. Additional programs and systems will be supported in the future.

In order for a VMS program to display the video and alarms received from SightLogix devices, the program must be configured properly, both to open communication with devices and to respond appropriately to alarm information. The actual configuration steps differ, depending on the program. However, most programs require the following:

- > **Setting web authentication between the SightLogix device and the VMS.** This includes entering the username and password (the default username is *sightlogix* or *root*, and the default password is *push2edge*). It is recommended that you change both defaults.

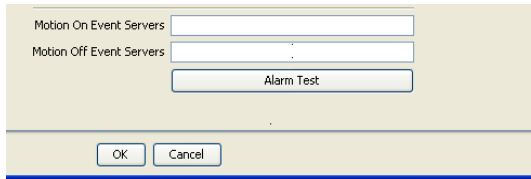
It also includes changing to digest web authentication if this more secure web authentication is supported by the individual VMS program. (By default, SightSensors are set up for basic authentication, which is supported by all VMS programs.)

You set both the web username/password and the authentication type from the Web Server dialog (right-click a device icon in the SightMonitor camera tree → Configure → Web Server):



- > **Adding SightSensors as AXIS-211 devices** (except when indicated); adding SightTrackers as AXIS 213.
- > **Specifying the actions (or events) that occur when an alarm is received.** This can include, depending on the program: audio alerts, automatic recording during an alarm, bookmarks inserted into recorded video to signal the start or end of an alarm, etc.

- > **Testing that alarm information is relayed from a SightLogix device to the VMS program.**
The Alarm Test option on the Camera (right-click device icon→Configure) simulates an alarm.

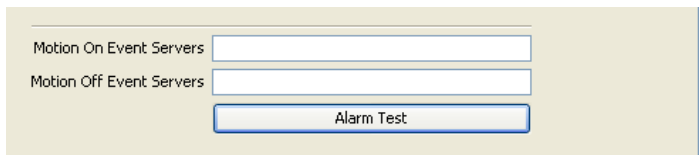


The following sections provide general guidance on how to configure the VMS programs that have been tested with SightLogix devices. However, for detailed, specific information, see the documentation that came with the particular VMS program.

March Network Visual Intelligence R5

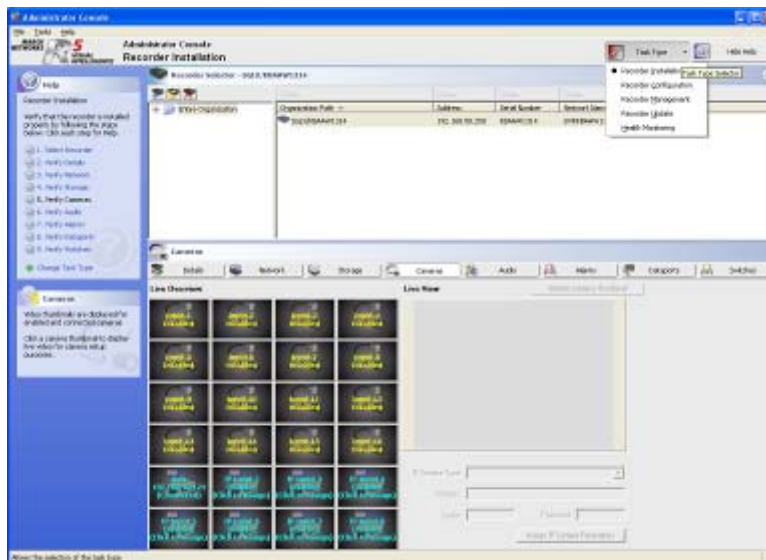
This procedure, which is written for the 4416C model, assumes you've already added and configured a recorder.

The first step is to add the March URL to the Camera dialog in the Coordination System (right-click the device icon→Configure→Camera) using the following syntax `march://server-ip-address`. Click OK.

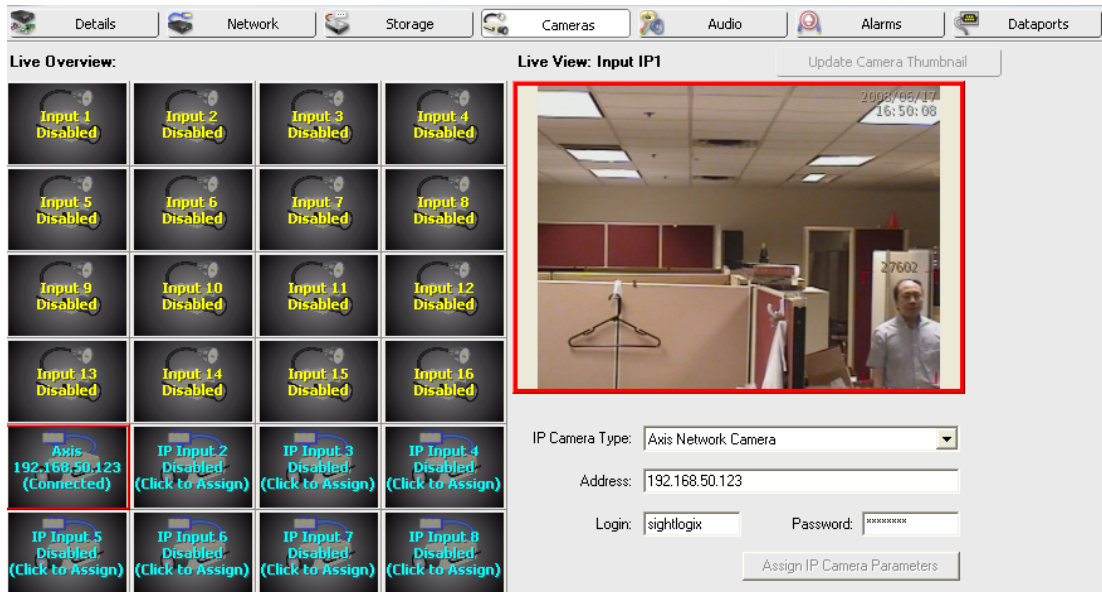


Adding SightLogix devices

1. Open the Administrator Console.
2. Under Task Type, select Recorder Installation.



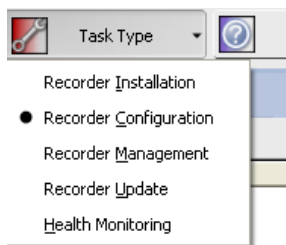
3. Make sure the appropriate recorder is selected and open the Cameras tab.



4. Select an unused IP input and do the following:
 - Set the IP camera type to be Axis Network Camera.
 - Enter the camera's IP address.
 - Set the login to be *sightlogix* (or *root*) and the password to be *push2edg*.
5. Click Assign IP Camera Parameters.

Creating alarms

1. Under Task Type, select Recorder Configuration. Make sure the appropriate recorder is selected.



2. Open the Alarms tab and select an unused alarm.

Alarm Settings - Alarm 9

General	Video	Cameras	Audio	Alarms	Detectors	Switches	Schedules	Actions	Summary
Alarm 9		No	Yes	0	Open	0	Close		
Input	Name	Enabled	Default Always	Open Delay	Open State	Close Delay	Close State	Primary Camera	
10	Alarm 10	No	Yes	0	Open	0	Close		
11	Alarm 11	No	Yes	0	Open	0	Close		
12	Alarm 12	No	Yes	0	Open	0	Close		
13	Alarm 13	No	Yes	0	Open	0	Close		
14	Alarm 14	No	Yes	0	Open	0	Close		
15	Alarm 15	No	Yes	0	Open	0	Close		
16	Alarm 16	No	Yes	0	Open	0	Close		
2	Alarm 2	No	Yes	0	Open	0	Close		
3	Alarm 3	No	Yes	0	Open	0	Close		
4	Alarm 4	No	Yes	0	Open	0	Close		
5	Alarm 5	No	Yes	0	Open	0	Close		
6	Alarm 6	No	Yes	0	Open	0	Close		
7	Alarm 7	No	Yes	0	Open	0	Close		
8	Alarm 8	No	Yes	0	Open	0	Close		
9	Alarm 9	No	Yes	0	Open	0	Close		
1	NO ALARM	Yes	Yes	0	Open	0	Close	IP Camera 1	

- Configure the settings as needed by your site.

Click in the header to activate a dropdown menu for each category of settings. For the Primary Camera, select the camera you just added.

Alarm 9	No	Yes	0	Open	0
Alarm 9	Enabled	Detect Always	Open Delay	Open State	Close

- Save the settings.

Viewing video and testing alarms

To view video from the camera, open the Live Monitoring Console. Double-click the icon for the camera to view the video.

To test that alarms are received at the VMS, go to SightMonitor's Camera dialog for the device (right-click the device icon→Configure→Camera) and click Alarm Test.

Copyright © 2011 SightLogix. All rights reserved.

www.sightlogix.com

SightLogix, SightSensors, and SightTrackers are trademarks of SightLogix, Inc.

DiBos and AutoDome are registered trademarks of Bosch Security Systems, inc.

DVTel is a registered trademark of DVTel, Inc.

Genetec is a registered trademark and Omnicast is a trademark of Genetec Inc.

GOOGLE is a trademark of Google Inc.

Lenel and OnGuard are registered trademarks of Lenel Systems International, Inc.

NetDVMS is a registered trademark of On-Net Surveillance Systems, Inc.

NICE is a trademark of NICE Systems Ltd.

Pelco is a trademark of Pelco.

Proximex Surveillint™ is a trademark of Proximex Corporation.

Symmetry is a registered trademark of Group 4 Technology Ltd.

Verint is a registered trademark of Verint Systems Inc.

XProtect is a registered trademark of Milestone Systems A/S.

All other trademarks are the property of their respective owners.

SightLogix is a licensee of the GNU General Public License (GPL). You can request a copy of the GPL-licensed source code used in this product from a SightLogix sales office.

No part of this document may be reproduced or transmitted in any form or by any means, electronic or mechanical, for any purpose, without the express written permission of SightLogix.

The information in this document is distributed on an "As is" basis and without warranty. While every precaution has been taken in the preparation of this document, SightLogix assumes no responsibility for errors or omissions or for any damages resulting from the use of the information contained herein.