

Configuring NICE NiceVision

Version 11.00 build 10

Configuring Third-Party Programs

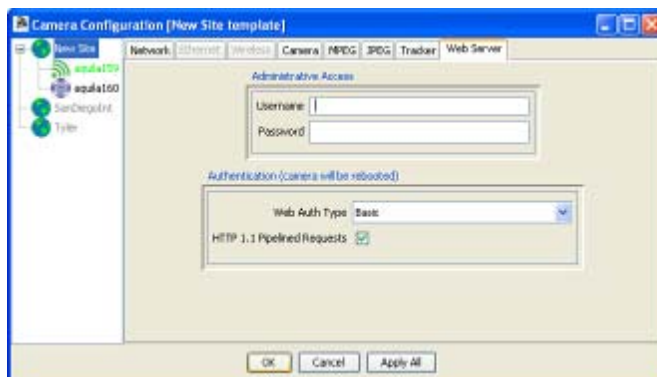
SightLogix devices are used with two types of third-party programs: VMS programs, which display video, GPS coordinates, and alarm and other information from SightLogix devices, and command and control systems (C2), which are integrated systems for monitoring multiple types of sensors. Currently, SightLogix supports a range of VMS programs and control systems. Additional programs and systems will be supported in the future.

In order for a VMS program to display the video and alarms received from SightLogix devices, the program must be configured properly, both to open communication with devices and to respond appropriately to alarm information. The actual configuration steps differ, depending on the program. However, most programs require the following:

- > **Setting web authentication between the SightLogix device and the VMS.** This includes entering the username and password (the default username is *sightlogix* or *root*, and the default password is *push2edg*). It is recommended that you change both defaults.

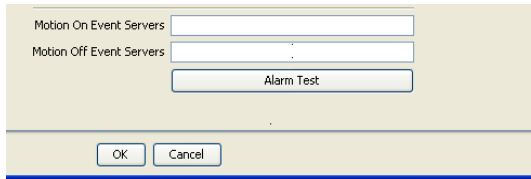
It also includes changing to digest web authentication if this more secure web authentication is supported by the individual VMS program. (By default, SightSensors are set up for basic authentication, which is supported by all VMS programs.)

You set both the web username/password and the authentication type from the Web Server dialog (right-click a device icon in the SightMonitor camera tree → Configure → Web Server):



- > **Adding SightSensors as AXIS-211 devices** (except when indicated); adding SightTrackers as AXIS 213.
- > **Specifying the actions (or events) that occur when an alarm is received.** This can include, depending on the program: audio alerts, automatic recording during an alarm, bookmarks inserted into recorded video to signal the start or end of an alarm, etc.

- > **Testing that alarm information is relayed from a SightLogix device to the VMS program.**
The Alarm Test option on the Camera (right-click device icon → Configure) simulates an alarm.



The following sections provide general guidance on how to configure the VMS programs that have been tested with SightLogix devices. However, for detailed, specific information, see the documentation that came with the particular VMS program.

NICE NiceVision version 11.00 build 10

NICE™ NiceVision supports one channel per camera.

Adding SightLogix devices

From the SiteBuilder, select the recorder that the SightLogix device is to be associated with. Click the Add Entity button () and select IP device.




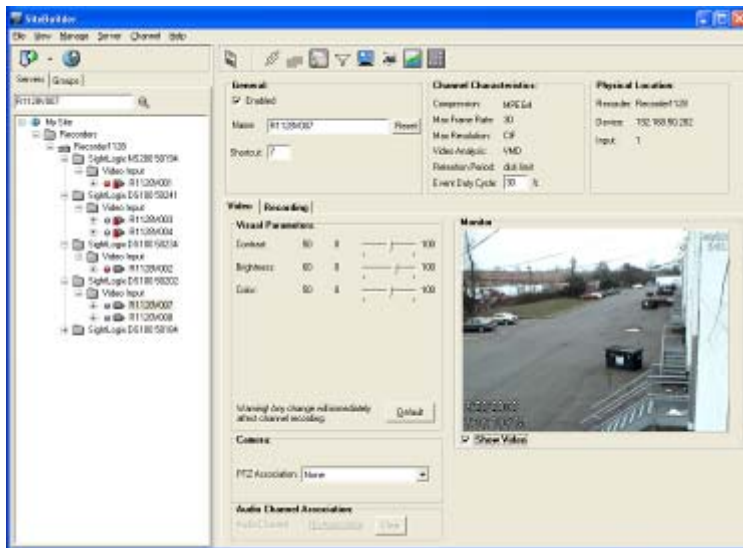
In the dialog that appears, enter **SightLogix** as the vendor, the appropriate model (usually **DS100**), the appropriate **IP address**, and the **username** and **password** (*sightlogix* and *push2edg*, respectively). Then navigate to the end.

Creating alarms

By default, two alarms are already created in NICE: SigLoss (in case of loss of video signal) and Move in case of a moving target. No additional alarms are required.

Viewing video & alarms

To view video, click the appropriate channel icon ( **R1128V007**). From the dialog that opens, go to the Video tab and select Show Video.



Testing the connection

On the SightMonitor Camera dialog, use the Alarm Test button to verify that the connection is open and that alarm information is being relayed and interpreted at NICE. You should see video begin to record after clicking Alarm Test.

Configuring SightTracker for NiceVision

- Install the relevant PTZ engine & agent .
- Add the PTZ engine & agent to the Site Builder.
- Add PTZ controller with the following information:
 - Device protocol: 'Axis Direct'.
 - Interface type: 'Http'.
 - Connection type-> 'IP address': enter the device IP.
 - User name & password: enter the device credentials.

| | | | |
|-------------------------------|--|-----------------|-----------------------------------|
| General Info: | | | |
| Controller Name: | <input type="text" value="Axis Direct"/> | | |
| Device Protocol: | <input type="text" value="Axis Direct"/> | Interface Type: | <input type="text" value="Http"/> |
| Setup Parameters: | | | |
| Port Number: | <input type="text" value="COM1"/> | | |
| Parity: | <input type="text" value="Odd"/> | Baud Rate: | <input type="text" value="110"/> |
| | | Stop Bit: | <input type="text" value="1"/> |
| Monitor Number: | <input type="text" value="1"/> | | |
| Connection Parameters: | | | |
| IP Address: | <input type="text" value="172.18.71.160"/> | User Name: | <input type="text" value="root"/> |
| Port: | <input type="text" value="80"/> | Password: | <input type="text" value="xxxx"/> |
| Pier Type: | <input type="text" value="RS232"/> | | |

- Add PTZ camera

| | |
|---------------------------------|---|
| General Info: | |
| Camera Name: | Axis 215 PTZ |
| Slot Number: | 1 |
| Setup Parameters: | |
| Maximum Presets: | 20 |
| Supported Operations: | <input checked="" type="checkbox"/> Variable Speed <input checked="" type="checkbox"/> Horizontal <input checked="" type="checkbox"/> Vertical <input checked="" type="checkbox"/> Iris <input checked="" type="checkbox"/> Focus <input checked="" type="checkbox"/> Zoom <input type="checkbox"/> Reset |
| PTZ Recorded Track: | |
| <input type="checkbox"/> Enable | |
| Maximum Tracks: | |
| Camera Association: | |
| Server Name: | None |
| Channel Name: | None |
| Camera Location: | |
| Agent Name: | PTZ Agent 172.18.68.69 |
| Interface Name: | Axis Direct |

- In slot number- type "1".
- Press OK to finish.

Copyright © 2011 SightLogix. All rights reserved.

www.sightlogix.com

SightLogix, SightSensors, and SightTrackers are trademarks of SightLogix, Inc.

SightLogix is a licensee of the GNU General Public License (GPL). You can request a copy of the GPL-licensed source code used in this product from a SightLogix sales office.

The information in this document is distributed on an "As is" basis and without warranty. While every precaution has been taken in the preparation of this document, SightLogix assumes no responsibility for errors or omissions or for any damages resulting from the use of the information contained herein.