

Configuring Panasonic WJ-ND400

Version WJ-ND400

Configuring Third-Party Programs

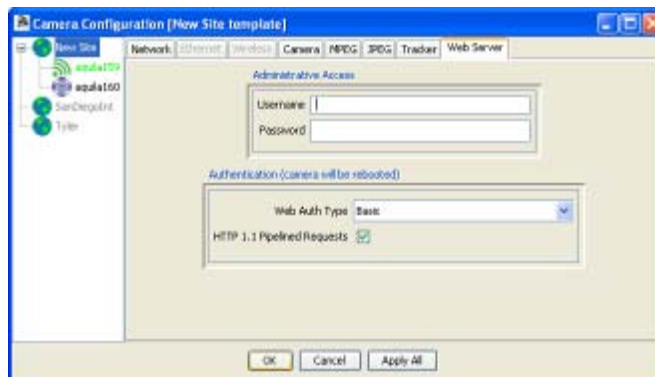
SightLogix devices are used with two types of third-party programs: VMS programs, which display video, GPS coordinates, and alarm and other information from SightLogix devices, and command and control systems (C2), which are integrated systems for monitoring multiple types of sensors. Currently, SightLogix supports a range of VMS programs and control systems. Additional programs and systems will be supported in the future.

In order for a VMS program to display the video and alarms received from SightLogix devices, the program must be configured properly, both to open communication with devices and to respond appropriately to alarm information. The actual configuration steps differ, depending on the program. However, most programs require the following:

- > **Setting web authentication between the SightLogix device and the VMS.** This includes entering the username and password (the default username is *sightlogix* or *root*, and the default password is *push2edg*). It is recommended that you change both defaults.

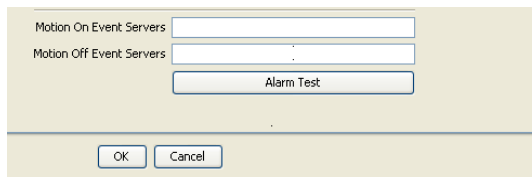
It also includes changing to digest web authentication if this more secure web authentication is supported by the individual VMS program. (By default, SightSensors are set up for basic authentication, which is supported by all VMS programs.)

You set both the web username/password and the authentication type from the Web Server dialog (right-click a device icon in the SightMonitor camera tree → Configure → Web Server):



- > **Adding SightSensors as AXIS-211 devices** (except when indicated); adding SightTrackers as AXIS 213.

- > **Specifying the actions (or events) that occur when an alarm is received.** This can include, depending on the program: audio alerts, automatic recording during an alarm, bookmarks inserted into recorded video to signal the start or end of an alarm, etc.
- > **Testing that alarm information is relayed from a SightLogix device to the VMS program.** The Alarm Test option on the Camera (right-click device icon→Configure) simulates an alarm.



The following sections provide general guidance on how to configure the VMS programs that have been tested with SightLogix devices. However, for detailed, specific information, see the documentation that came with the particular VMS program.

Panasonic WJ-ND400

Before You Begin

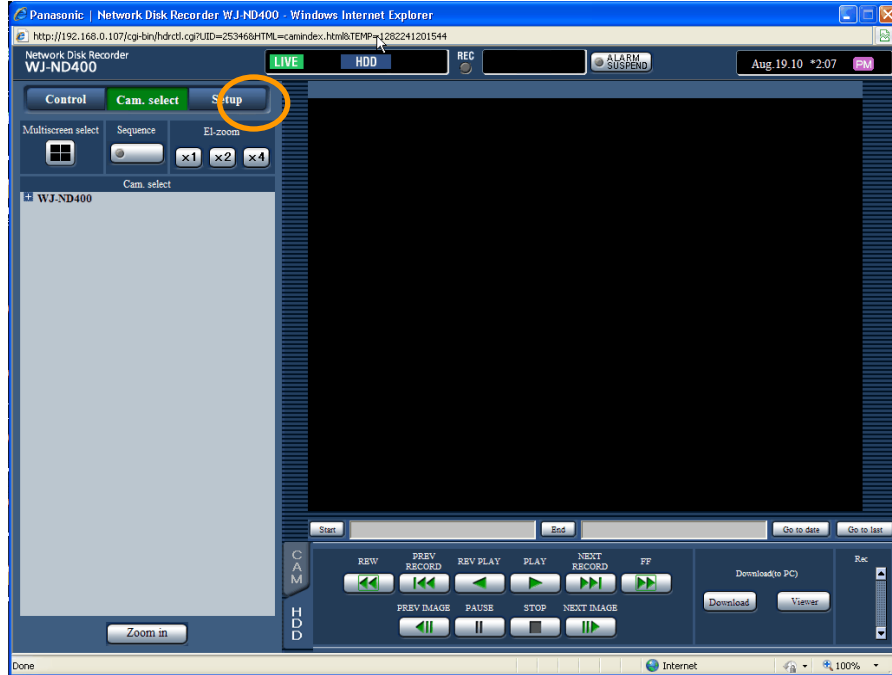
The Panasonic WJ-ND400 requires firmware 2.01 or higher for support of MPEG4 video stream. Download the official version from the Panasonic support website: <http://www.panasonic.com/business/security/softwaredownloads/index.asp?Submit=search&Select=DroplList1#>

The instructions for upgrading the firmware are located in the downloaded firmware upgrade zip file.

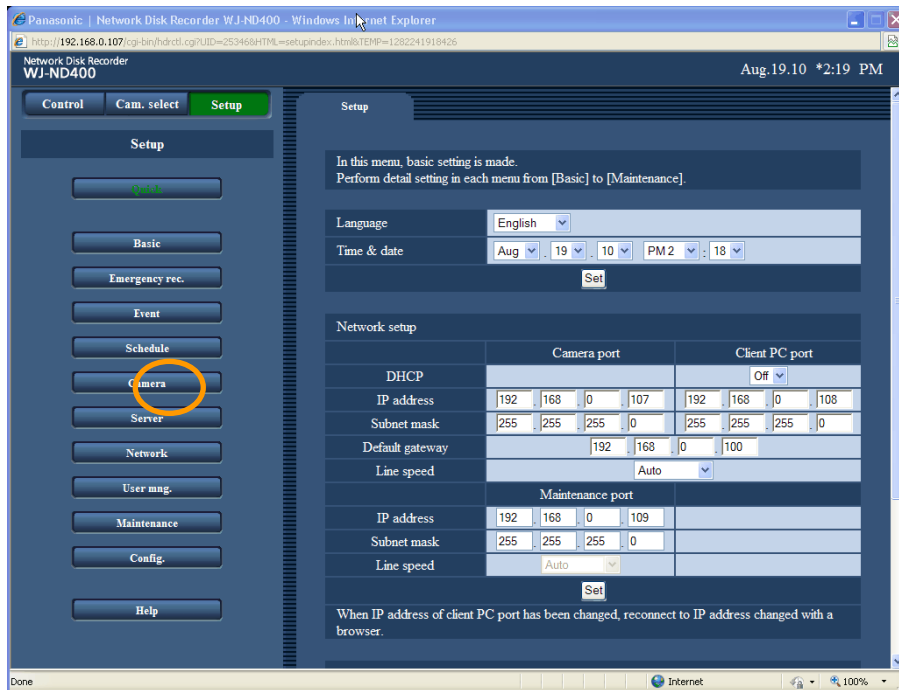
Panasonic WJ-ND400 supports one channel per SightLogix Sensor/Camera.

Adding SightLogix devices to the WJ-ND400 for MPEG4 video

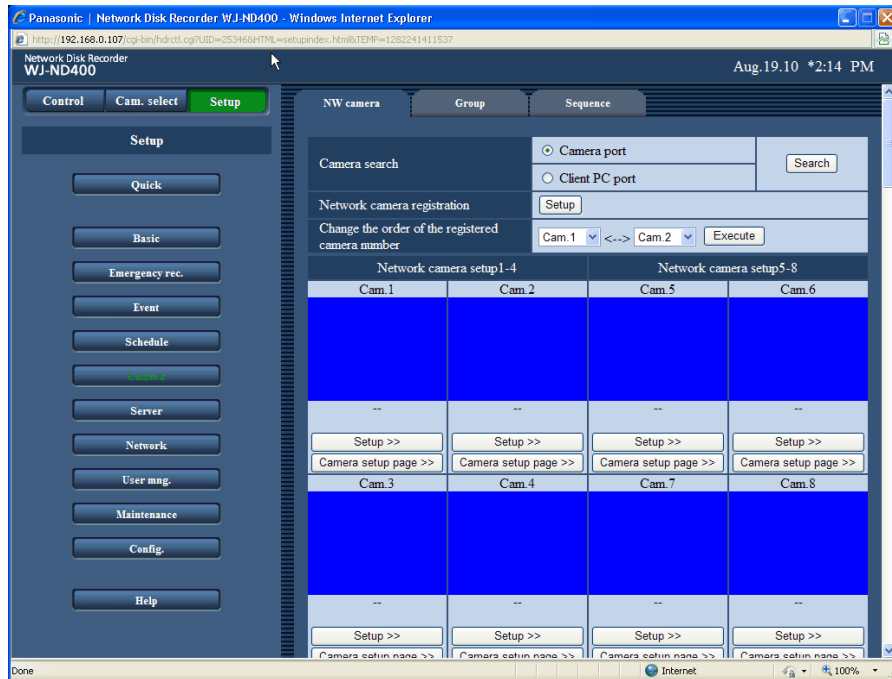
1. Upgrade Recorder firmware to 2.01 or higher.
2. From Internet Explorer, enter “<http://xxx.xxx.xxx.xxx>” (where xxx.xxx.xxx.xxx is the ND400 Network Disk Recorder IP Address) in the browser address bar. The WJ-ND400 GUI page is displayed.



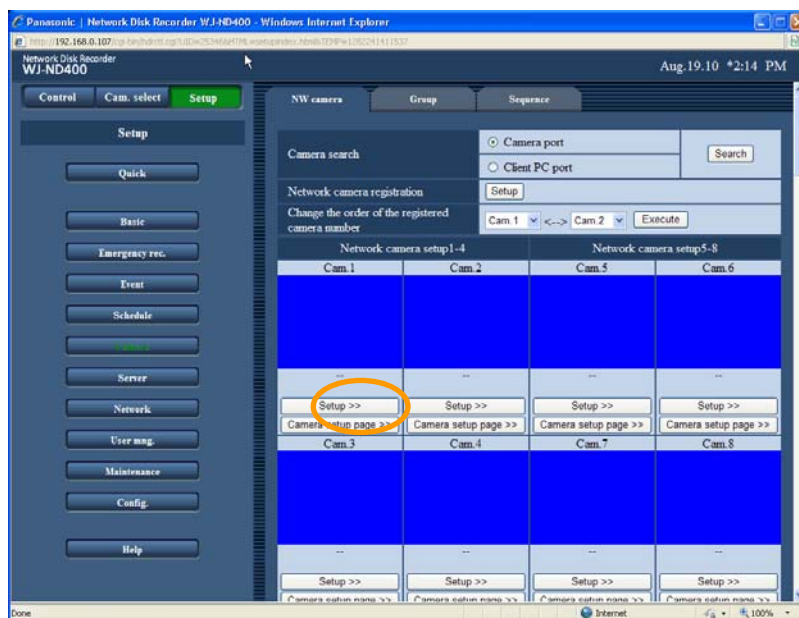
3. Click Setup from within the GUI menu.
4. Click the Camera tab located in the Setup menu.



The NW camera setup window button functions are displayed.



- Click the Setup button for the camera number you want to configure.



The NW Camera Setup window is displayed.

6. Enter the following information into the appropriate tabs in the NW New Camera Setup window:

- **Manufacturer:** Axis.
- **Model/Compression:** AXIS241S(U)/MPEG4 for MPEG4 video otherwise select AXIS/M for MJPEG
- **Address:** Enter the IP address of the camera
- **Port number:** Default is port 80.
- **Group:** G1 to G8 specifies the group to which the camera belongs.
- **Camera title:** Title input specifies the camera title,
- **User name:** *sightlogix*
- **Password:** *push2edg*
- **Time zone:** Specifies the time zone of the camera

7. Left click on Set to return to the Setup tab in the ND400 GUI.

Live video will appear in the Cam.x tab of the NW camera window.

Configuring the CS to send alarms to the ND400

Before You Begin

The following items are required for Configuring the CS to send alarms to the ND400:

- Correctly configured and working CS.
- Network Connectivity to CS, ND400 and SightLogix devices.
- SightLogix sensor number as assigned on the ND400.

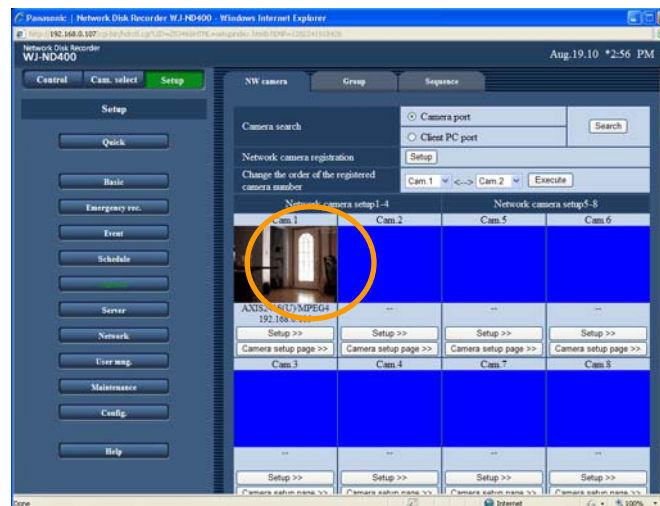
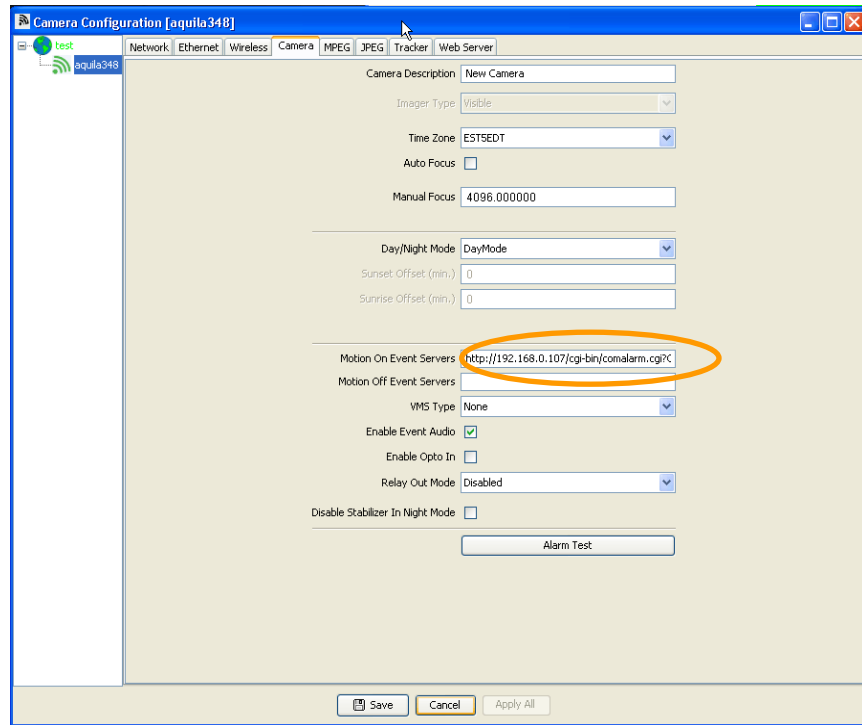
Configuring the CS

1. Start the SightLogix CS from your PC.
2. Navigate to the Camera tab for the SightLogix sensor that will report to the ND400.
3. Enter the following URL information in the Motion On Event Servers location in the Camera tab:

Motion On Event Servers: “**http://<ND400 IP Address>/cgi-bin/comalarm.cgi?CMD=XXX**”

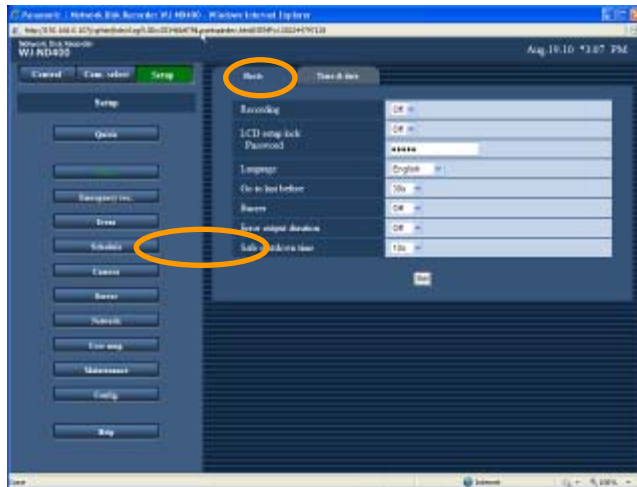
For IP Address, enter the IP address of the ND400 Network Disk Recorder.

For XXX, enter the camera number from the ND400 NW Camera tab (for example, 001).

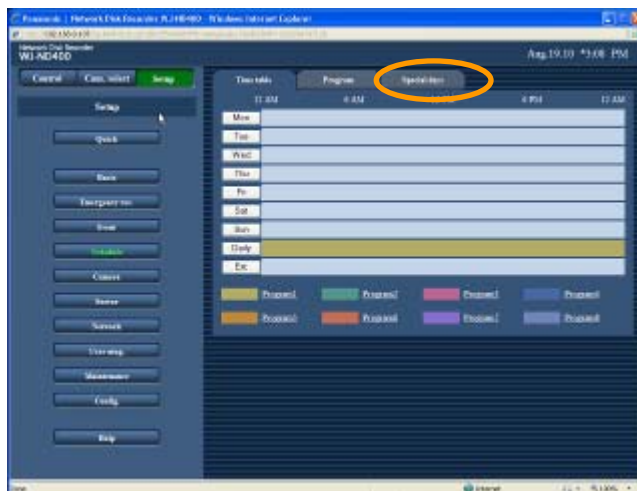


Adding SightLogix device alarms to the ND400

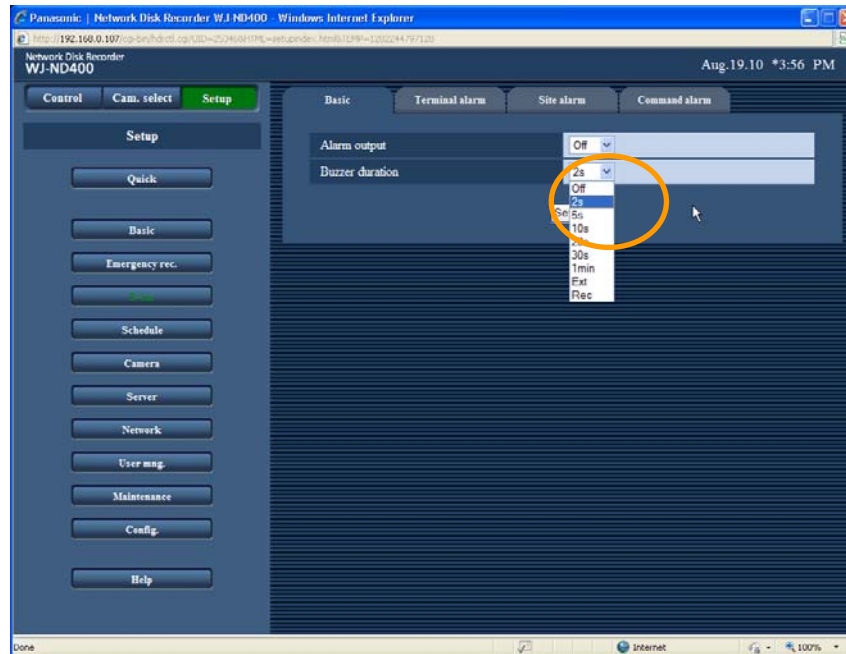
1. From Internet Explorer enter “http://<ND400 IP Address>” in the browser address bar. The WJ-ND400 GUI page is displayed.
2. Click Setup and then click Schedule in the Setup menu.



3. Select the appropriate Program Number and then enter a pre- (optional) and post event recording rate and duration for the selected camera.

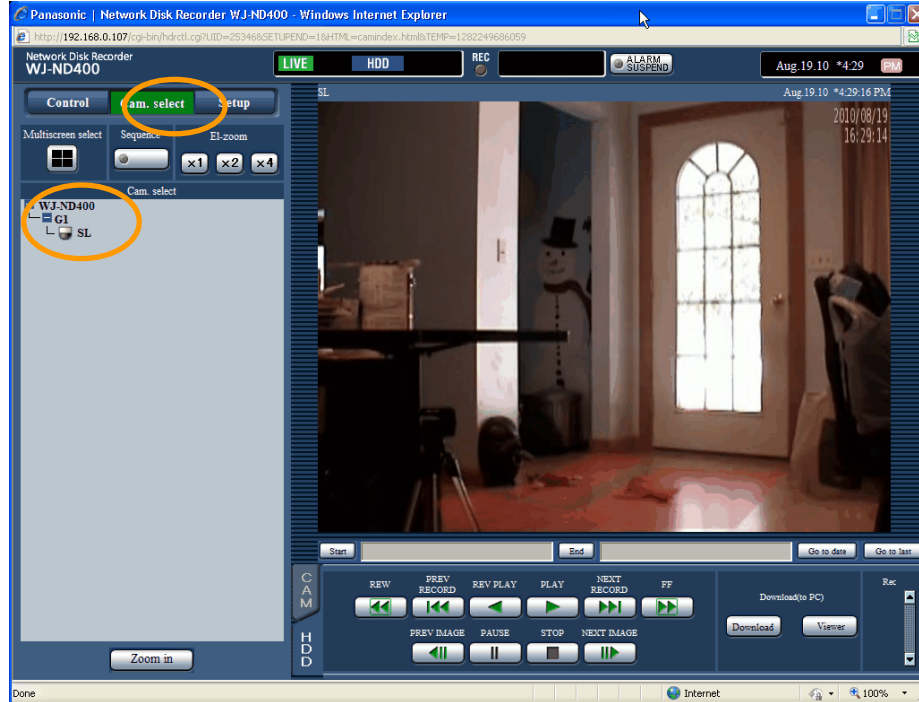


4. Left mouse click on Set located at the bottom of the window when finished. Close the window from the upper right hand corner “X”.
5. To activate the built in alarm buzzer on the ND400, select the Event tab in the S\Setup window. In the Basic tab, set the Buzzer duration drop down menus to the desired length of time the buzzer will activate, then left mouse click on Set.

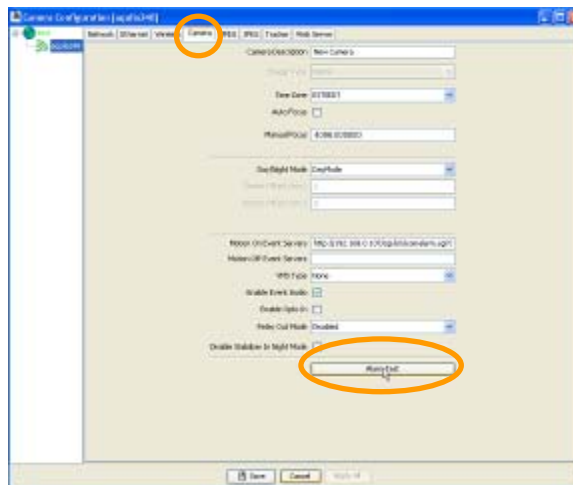


Testing the alarms from the SightLogix Sensor to the ND400

1. From Internet Explorer enter “http://<ND400 IP Address>” in the browser address bar. The WJ-ND400 GUI page is displayed.
2. Left mouse click on the Cam. Select tab. If video is not displayed, open the network tree to the SL camera.



3. If an alarm is shown in the GUI to the right of the ALARM SUSPEND icon, clear it by clicking on it.
4. From the SightLogix CS, navigate to the Camera tab for the SightLogix Sensor currently being tested.
5. Click Alarm Test in the SightLogix CS GUI. The alarm buzzer on the ND400 sounds and the ALM icon appears next to the ALARM SUSPEND icon in the ND400 GUI.





Copyright © 2011 SightLogix. All rights reserved.

www.sightlogix.com

SightLogix, SightSensors, and SightTrackers are trademarks of SightLogix, Inc.

DiBos and AutoDome are registered trademarks of Bosch Security Systems, inc.

DVTel is a registered trademark of DVTel, Inc.

Genetec is a registered trademark and Omnicast is a trademark of Genetec Inc.

GOOGLE is a trademark of Google Inc.

Lenel and OnGuard are registered trademarks of Lenel Systems International, Inc.

NetDVMS is a registered trademark of On-Net Surveillance Systems, Inc.

NICE is a trademark of NICE Systems Ltd.

Pelco is a trademark of Pelco.

Proximex Surveillint™ is a trademark of Proximex Corporation.

Symmetry is a registered trademark of Group 4 Technology Ltd.

Verint is a registered trademark of Verint Systems Inc.

XProtect is a registered trademark of Milestone Systems A/S.

All other trademarks are the property of their respective owners.

SightLogix is a licensee of the GNU General Public License (GPL). You can request a copy of the GPL-licensed source code used in this product from a SightLogix sales office.

No part of this document may be reproduced or transmitted in any form or by any means, electronic or mechanical, for any purpose, without the express written permission of SightLogix.

The information in this document is distributed on an "As is" basis and without warranty. While every precaution has been taken in the preparation of this document, SightLogix assumes no responsibility for errors or omissions or for any damages resulting from the use of the information contained herein.