

Configuring ViconNet VMS

Background: Configuring Third-Party Programs

SightLogix devices are used with two types of third-party programs: VMS programs, which display video, GPS coordinates, and alarm and other information from SightLogix devices, and command and control systems (C2), which are integrated systems for monitoring multiple types of sensors. Currently, SightLogix supports a range of VMS programs and control systems. Additional programs and systems will be supported in the future.

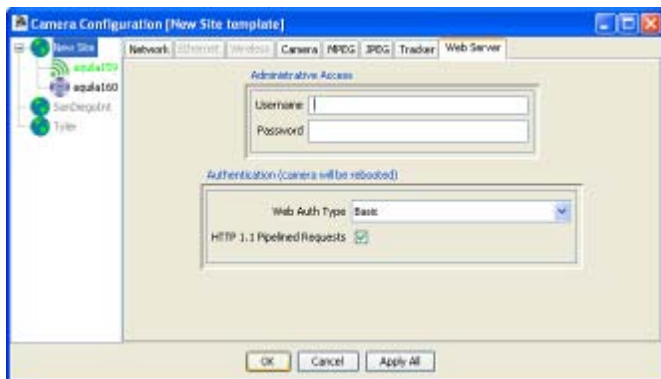
In order for a VMS program to display the video and alarms received from SightLogix devices, the program must be configured properly, both to open communication with devices and to respond appropriately to alarm information. The actual configuration steps differ, depending on the program. However, most programs require the following:

- > **Setting web authentication between the SightLogix device and the VMS.** This includes entering the username and password (the default username is *sightlogix* or *root*, and the default password is *push2edge*). It is recommended that you change both defaults.

NOTE: Changing the default credentials, as recommended, also deletes the default accounts. The default accounts are also deleted when creating a new SightLogix user. Always be sure to store the new credentials in a safe location that can be retrieved.

It also may include changing to digest web authentication if this more secure web authentication is supported by the individual VMS program. (By default, SightSensors are set up for basic authentication, which is supported by all VMS programs.)

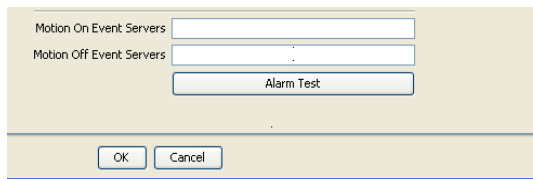
You set both the web username/password and the authentication type from the Web Server dialog (right-click a device icon in the SightMonitor camera tree → Configure → Web Server):



- > **Adding SightSensors as AXIS-211 devices** (except when indicated); adding SightTrackers as AXIS 213.

Configuring

- > **Specifying the actions (or events) that occur when an alarm is received.** This can include, depending on the program: audio alerts, automatic recording during an alarm, bookmarks inserted into recorded video to signal the start or end of an alarm, etc.
- > **Testing that alarm information is relayed from a SightLogix device to the VMS program.** The Alarm Test option on the Camera (right-click device icon → Configure) simulates an alarm.

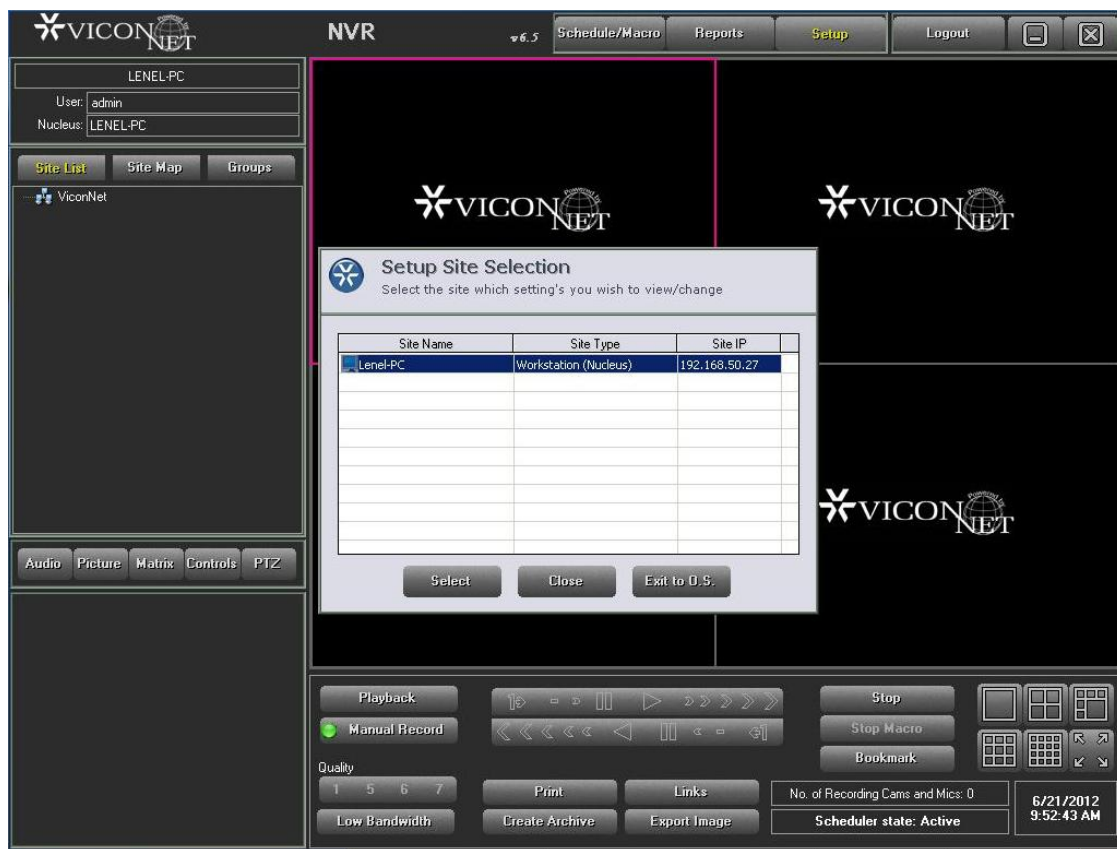


The following sections provide general guidance on how to configure the VMS programs that have been tested with SightLogix devices. However, for detailed, specific information, see the documentation that came with the particular VMS program.

Configuring ViconNet VMS

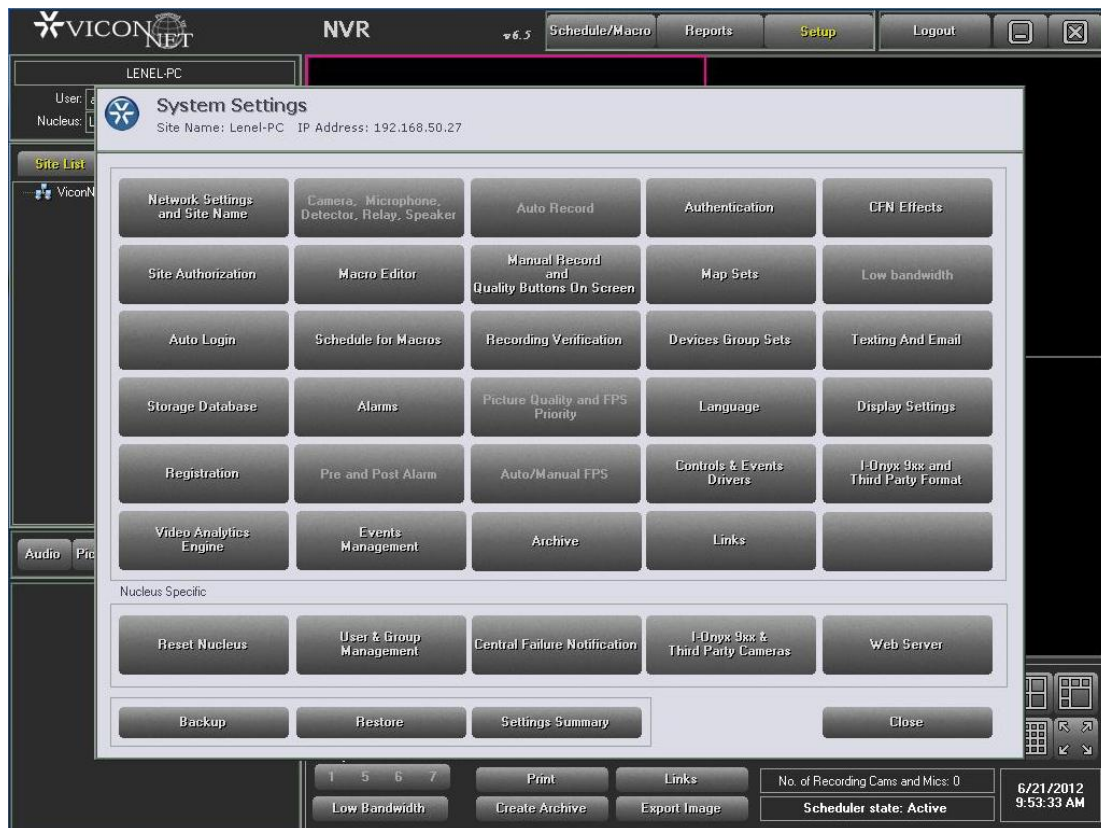
To add a Sightlogix Device (SightSensor/SightTracker)

1. Login to your ViconNet System.



2. Click the “Add Camera” button in the I-Onyx 9xx and Third party Camera settings screen.

Configuring



3. The Camera Details area will become enabled. Select "AXIS" from the Vendor list.
4. Enter a Camera Name for this camera and select IP or DNS. (DNS is used to add the Sightlogix Sensor/Tracker by its hostname on the network instead of its IP address and is only available if the Sightlogix Sensor/Tracker is registered in the DNS.)
5. Select "MPEG4" or "Motion JPEG" format for the Sightlogix device.
6. The Port Number will default to 80.
7. Enter "sightlogix" or "root" in the User Name: text entry box and "push2edg" in the Password: text entry box, as shown.

Configuring

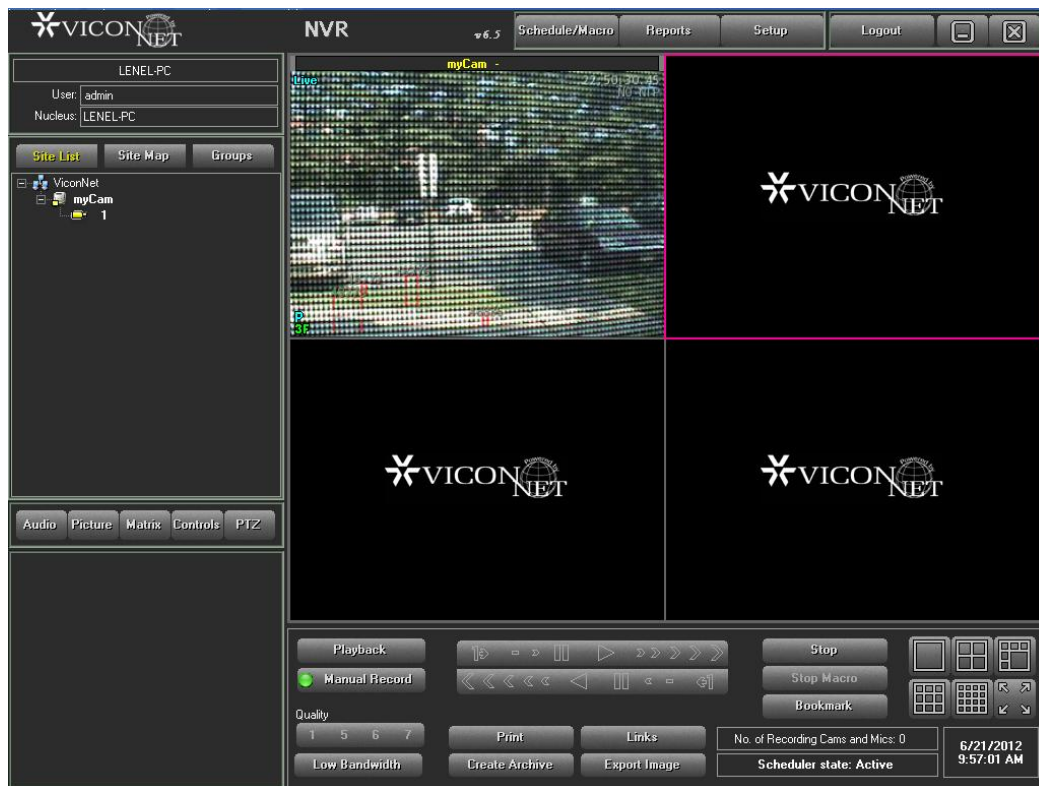
The screenshot shows the 'I-Onyx 9xxx and Third Party Camera settings' window. The window title bar includes the Vicon logo and the text 'I-Onyx 9xxx and Third Party Camera settings'. Below the title bar, it says 'Site Name: Lenel-PC IP Address: 192.168.50.27'. The main area contains a table with columns: Camera Name, Camera Vendor, Camera Format, and Camera IP/DNS. To the right of the table are buttons: Add Camera, Add I-Onyx 9xx Camera, Search I-Onyx 9xx Cameras, Edit Camera, Delete Camera, and Close. The 'Close' button is circled in red. Below the table is the 'Camera Details' section. It contains fields for Camera (myCam), Vendor (AXIS), Format (Motion JPEG), IP (192.168.50.168), User Name (root), Password (push2edg), and Quick Playback Storage Source (None). The 'Save' button is circled in red. A note at the bottom states: 'Note: It is recommended that user will be of type administrator.' The bottom right corner shows the date and time: 6/21/2012 9:55:09 AM.

8. Click the Save and Close button.

To View Video from a Sightlogix Device (SightSensor/SightTracker)

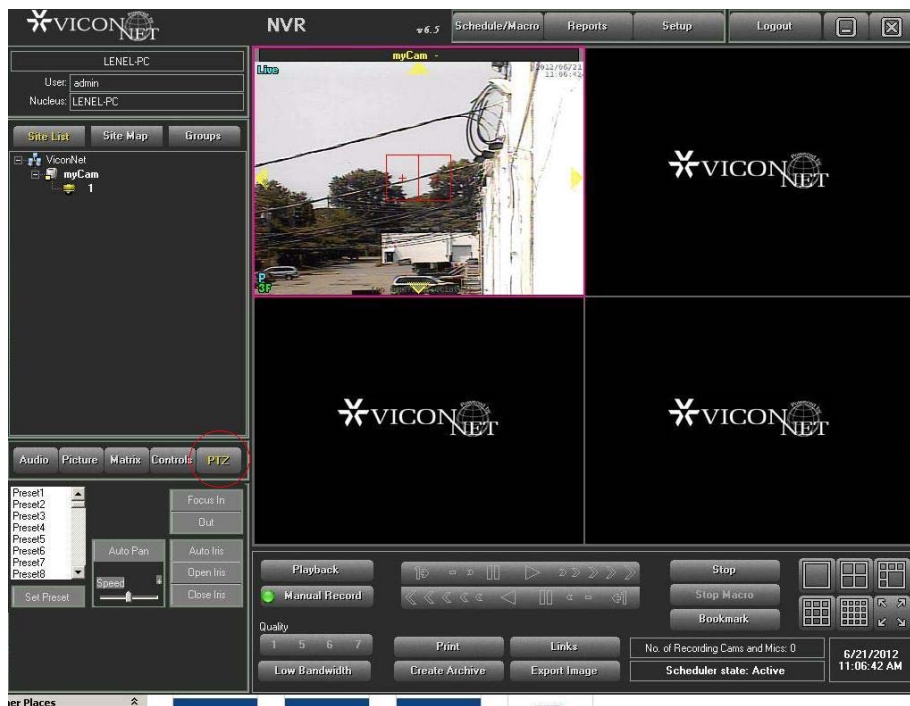
1. Drag the camera icon into a viewing pane.

Configuring



Setting Up PTZ control (for a SightTracker)

1. Select the SightTracker video display pane and click on the PTZ button.



2. Virtual joystick should now be available in the SightTracker video pane.

Setting Up Alarm/Alert from a SightSensor

1. Add the VICONNET URL to the Camera dialog in the SightLogix Coordination System (Right-click the device icon, choose Configure then Camera) using the following syntax: *viconnet://<IP Address Viconnet server>*
2. Click Ok.

The screenshot shows a configuration window with a light beige background. At the top, there is a 'Manual Focus' label followed by a text input field containing '4096.000000'. Below this is a horizontal separator line. Under the line, there is a 'Day/Night Mode' label followed by a dropdown menu showing 'DayMode'. Below that are two more text input fields: 'Sunset Offset (min.)' with '0' and 'Sunrise Offset (min.)' with '0'. Another horizontal separator line follows. Below the second line, there are two labels: 'Motion On Event Servers' and 'Motion Off Event Servers', each followed by a text input field containing the placeholder 'viconnet://<IP Address of Viconnet Server>'. Below these is a 'VMS Type' label followed by a dropdown menu showing 'None'. At the bottom, there are two checkboxes: 'Enable Event Audio' which is checked (indicated by a green checkmark icon), and 'Enable Opto In' which is unchecked.

<Bookmark><SLGX>SightSensor Serial # :ON</SLGX></Bookmark>

Example:

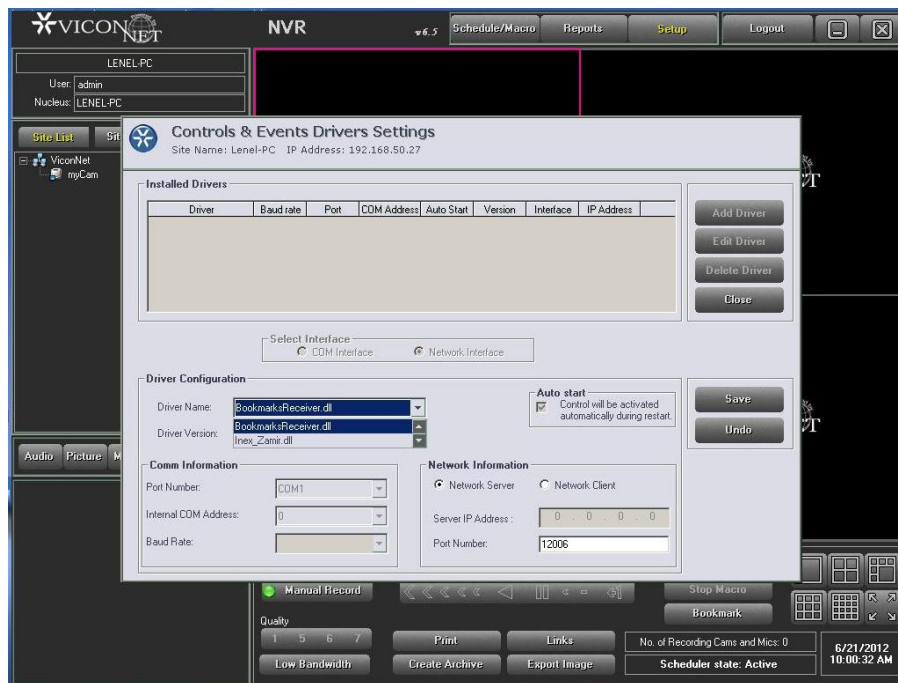
- > For SightSensor with serial number 000000168 and motion policy violated

<Bookmark><SLGX>000000168:ON</SLGX></Bookmark>

and the following is the text string for motion off

<Bookmark><SLGX>000000168:OFF</SLGX></Bookmark>

Configuring



Copyright © SightLogix. All rights reserved.

SightLogix, SightSensors, and SightTrackers are trademarks of SightLogix, Inc.

All other trademarks are the property of their respective owners.

SightLogix is a licensee of the GNU General Public License (GPL). You can request a copy of the GPL-licensed source code used in this product from a SightLogix sales office.

No part of this document may be reproduced or transmitted in any form or by any means, electronic or mechanical, for any purpose, without the express written permission of SightLogix.

The information in this document is distributed on an “As is” basis and without warranty. While every precaution has been taken in the preparation of this document, SightLogix assumes no responsibility for errors or omissions or for any damages resulting from the use of the information contained herein.