

About SightLogix Outdoor Video

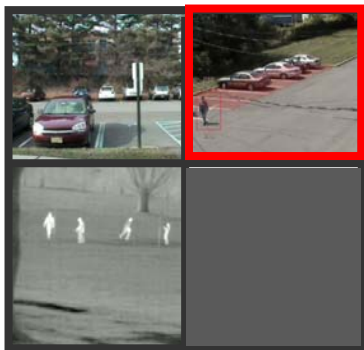
The SightLogix Enterprise System provides comprehensive video security using two video-intelligent devices:

- > *SightSensors* are cameras with built-in video processing that automatically and continuously monitor video to detect and flag security threats.
- > *SightTrackers* control PTZ cameras to automatically aim at targets identified by SightSensors, allowing security personnel to get an immediate, closeup view of targets.

Video and alarm information is relayed over the network to a site's video management system (VMS). From here, you view the video, clear alarms, and play back recorded video. See the manual that came with your VMS for specific instructions.

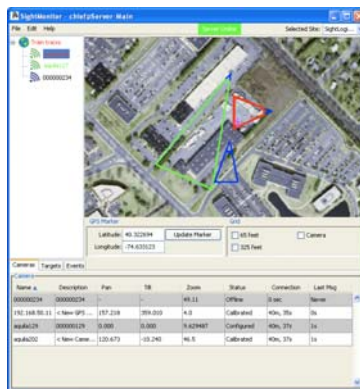
Information about the location of *targets*—objects that violate a site's alarm policies—is displayed within the SightMonitor, which is the user interface to the SightLogix system. The SightMonitor's dynamic site map shows camera detection zones and targets superimposed on a georeferenced aerial site image. Status information for targets, cameras, and system events is listed below the site map.

The SightMonitor and VMS normally run as separate applications on side-by-side monitors.



Use the video management system to:

- > View video & identify targets
- > View and replay current alarms
- > Clear alarms
- > View archived video



Use the SightMonitor to:

- > Maintain situational awareness of the location of targets and cameras
- > Obtain GPS coordinates for targets or any location in the site map
- > Monitor & acknowledge system events such as changes in status



SightLogix Quick Reference

Release 10

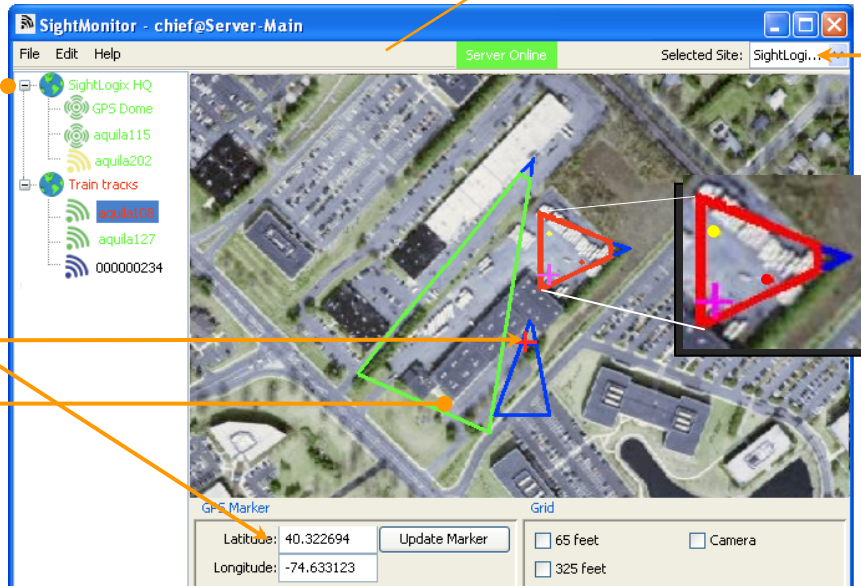
745 Alexander Road | Princeton, NJ 08540
p 609.951.0008 | f 609.951.0024
www.sightlogix.com

sightlogix
making outdoor video... *smarter*

SightMonitor for situational awareness



The status bar updates when lockdown is enabled or SightTrackers are frozen.



Camera tree

- SightSensor
- SightTracker (dome)
- VST

Double-click to obtain GPS coordinates

Cones reflect field of view and area of reliable detection (based on a human-size target); color indicates alarm status

Select site

Target status

- Alarmed
- Being tracked only

Site map navigation:

- Zoom in/out**
Use mouse roller ball or press +/-
- Move within map**
Press arrow keys
Or left click and drag.

- No alarms
- At least one target in alarm zone
- Offline
- Not calibrated

Blue outlines depict blind areas.

Name	Description	Pan	Tilt	Zoom	Status	Connection	Last Msg
000000234	000000234	-	-	49.11	Offline	0 sec	Never
192.168.50.11	< New GPS ...	157.218	359.010	4.0	Calibrated	40m, 35s	0s
aquila129	000000129	0.000	0.000	9.629487	Configured	40m, 37s	1s
aquila202	New Came	120 673	-10 240	46.5	Calibrated	40m, 37s	1s

Cameras tab

Id	Camera	Policy	Rule	Detected
24167	aquila234	Default		00:00:00:06
24166	aquila192	Default		00:00:00:18
24168	aquila234	Default		00:00:00:06

Targets tab

Time	Type	Category	State	Source
2008-03-13 11:57:29	Boot Slot Mismatch	Warning	Unacknowledged	aquila202
2008-02-29 15:07:07	Vital Alarm Trigger	Warning	Acknowledged	Camera ID 13
2008-02-29 15:07:07	Vital Alarm Trigger	Warning	Acknowledged	Camera ID 13
2008-02-29 15:07:07	Camera Configuration Mis...	Severe	Acknowledged	Camera ID 13
2008-02-29 15:07:04	Camera Configuration Mis...	Severe	Acknowledged	Camera ID 13

Events tab

Always acknowledge warnings and severe events.

Camera status

- Calibrated
- Configured but not calibrated
- Connected
- Offline
- Managed from a different server



Description: **New Camera**
 Serial Number: **000000206**
 IP Address: **192.168.50.206**
 Latitude: **40.32305**
 Longitude: **-74.63435**
 Altitude: **4.00**
 Monitor-Mode: Owner
 Associated Serial Numbers: **000000406**

Rolling over a camera icon reveals GPS coordinates, description name, and the Coordination System server that manages the camera.

Selected camera. Footprint of selected camera is shown in a heavy outline in the site map.

Camera and site names are shown with red text when there is an alarm. Black text denotes offline cameras.