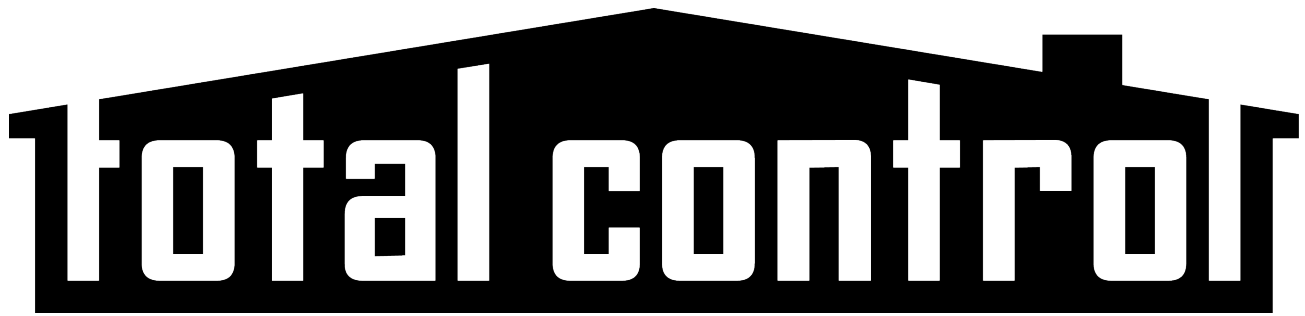


# Total Control: Graphics Expansion Pack

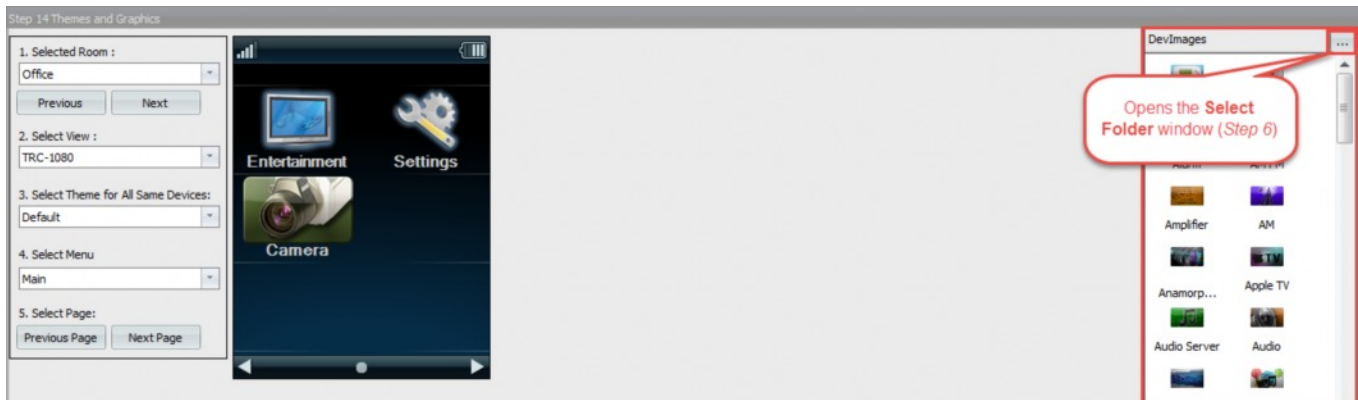


## Graphics Expansion Pack

Total Control offers a large variety of icons for buttons that enable installers to add a higher degree of personalization to projects through the Graphics Expansion Pack. Included in the expansion pack are graphics for small (106x64pixels) and large (120x72pixels) images for most URC interfaces. When properly installed, programmers have the flexibility to change the look of main and sub-menus within the Total Control Project.


### How to Install:

1. Log into the URC Control Room and click the following link:  
<http://www.urccontrolroom.com/forums/downloads.php?do=file&id=3>
2. Click **Download**.  
*This downloads a zip file named "URC Total Control Expansion Pack Installer".*
3. Extract the files from the zipped file and run the "URC Total Control Graphics Expansion Pack Installer.exe" file.
4. Follow the prompts through the installer.  
*The installer places all images from the Expansion Pack into the proper Total Control Accelerator graphics folder.*
5. Once the installation is complete, open Accelerator. The new graphics are available in **Step 14: Themes & Graphics**.



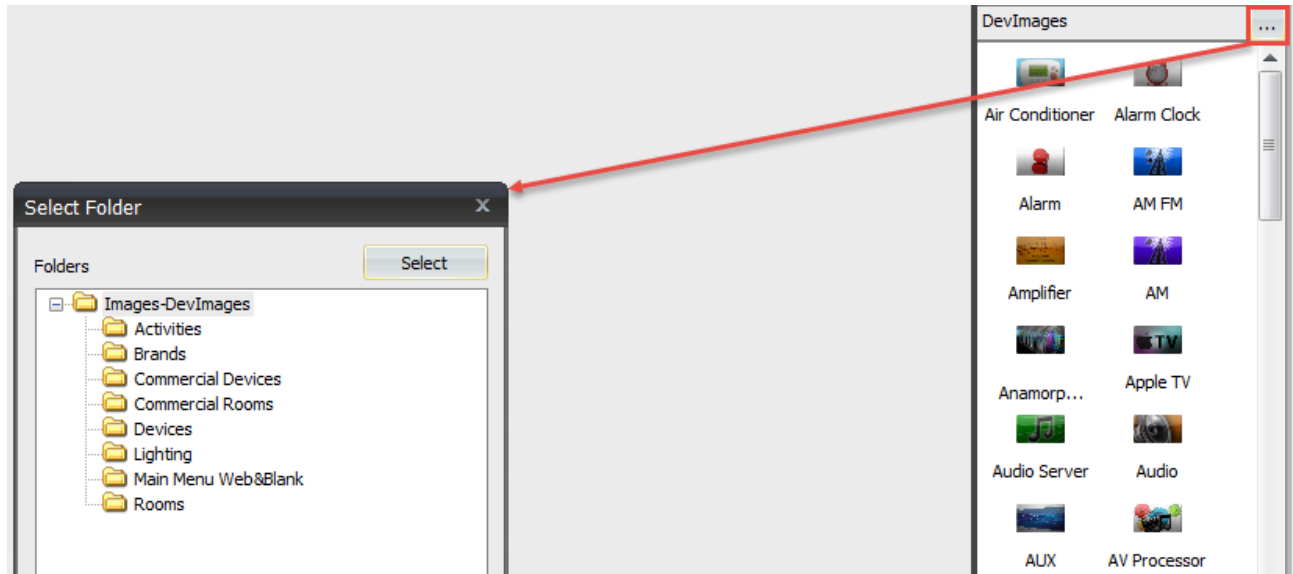
# Replacing Graphics:

To replace a graphic within the Main or Sub-Menu follow these steps:

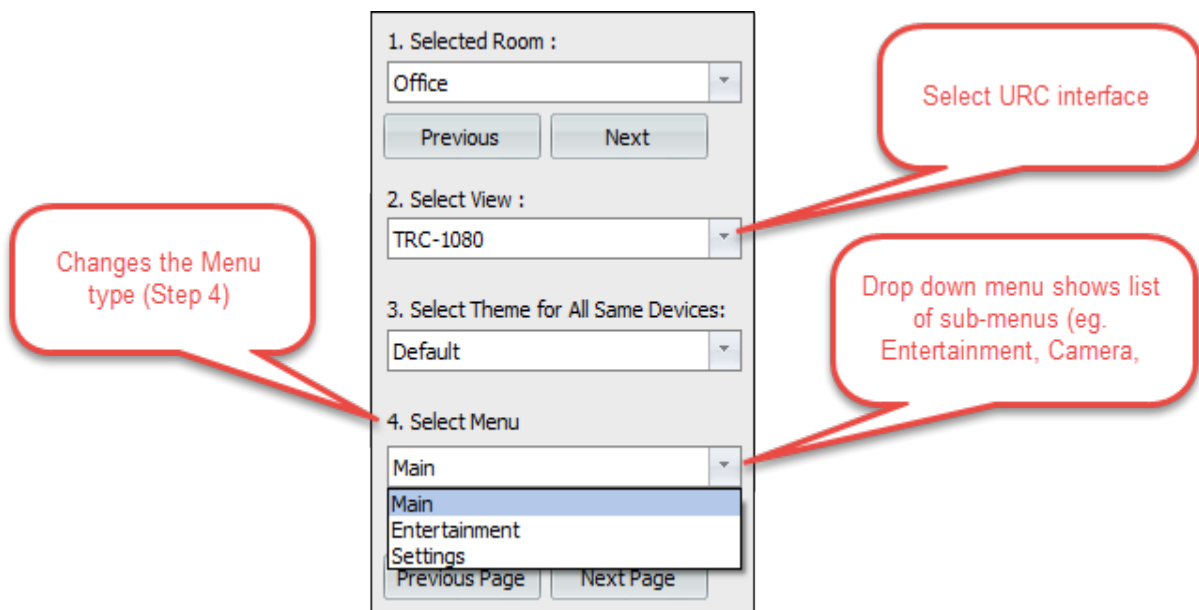
1. Go to **Step 14: Themes & Graphics**.
2. Select the  button at the top-right of the image gallery window.

This opens the **Select Folder** window.

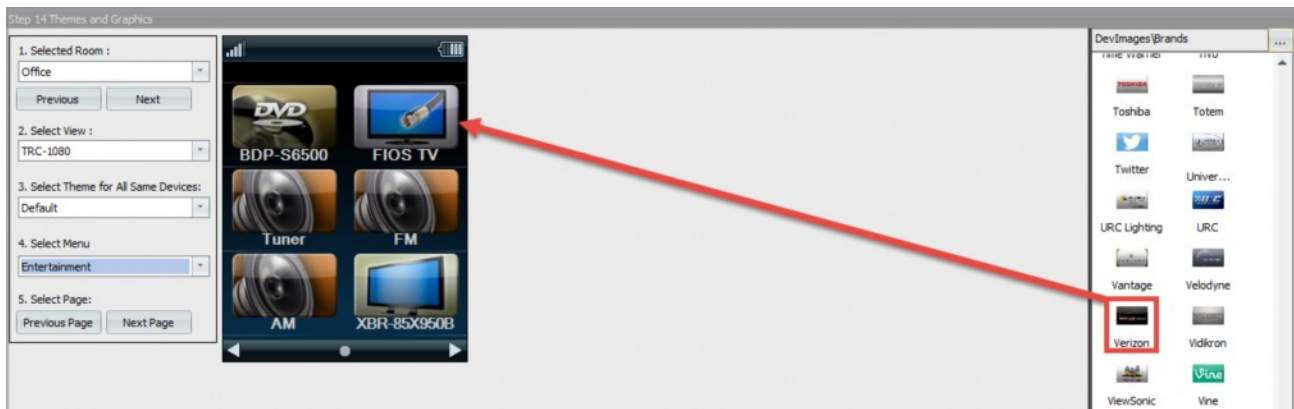
*From here the new expansion pack category folders are displayed.*



3. Select a category folder.  
*This example uses the Brands folder. After choosing a folder this changes the images displayed in the DevImages bar at the right side of Accelerator.*
4. Select a menu to customize.  
*For this example choose the Entertainment menu from the drop down. This allows the installer to change a sub-menu icon for Entertainment. To change a Main Menu icon, leave the Select Menu set to Main and follow the continuing steps.*



- Select the desired icon from the right and drag the image over to the icon.  
*This replaces the icon on the interface with the new image selected. For this example use the Verizon image to replace the Fios TV icon.*



- Images are displayed instantly in the preview window.

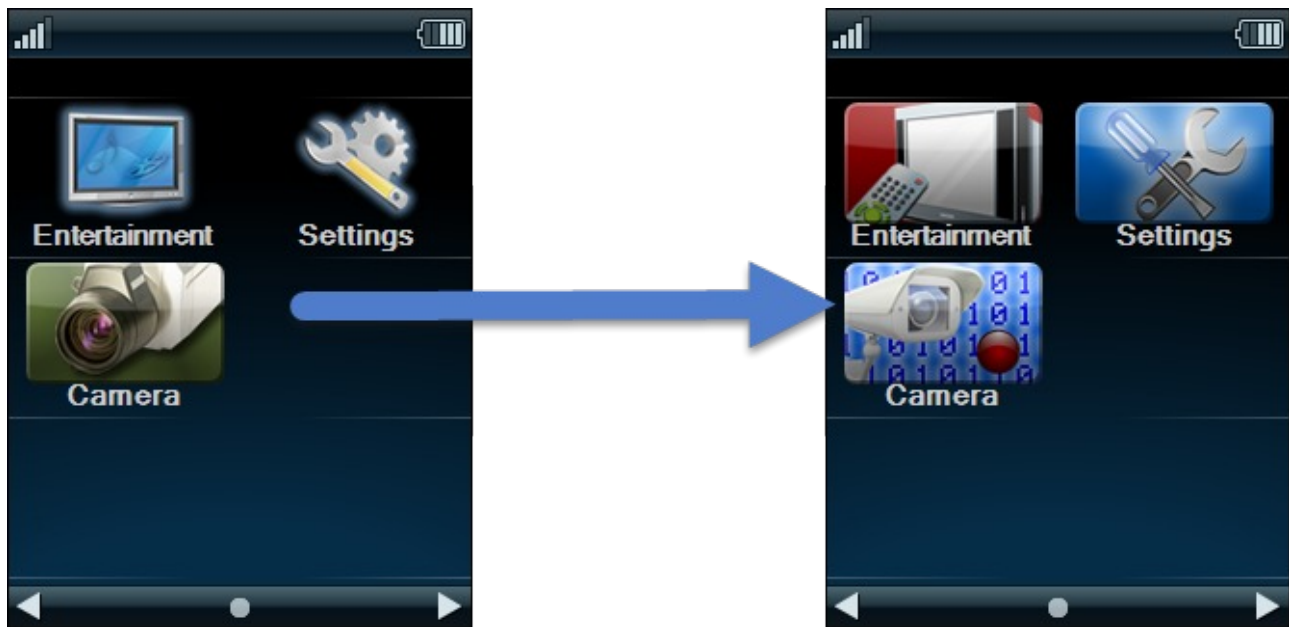


## **Default Icons:**

Accelerator contains pre-defined buttons for all of the most common rooms, devices, and categories. However, installers have the ability to change the image for those default buttons to a graphic chosen from the Graphics Expansion Pack. *This replaces the default image with a different one on all future Total Control projects.*

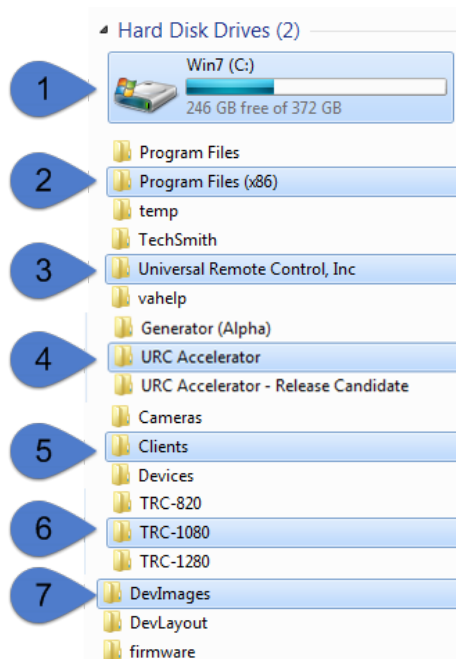
Notice below, the image on the left contains the default graphics for Entertainment, Settings, and Camera. Once the default images have been changed within the folders of Accelerator, the default image changes as viewed on the image to the right:

This example is taken from a TRC-1080.

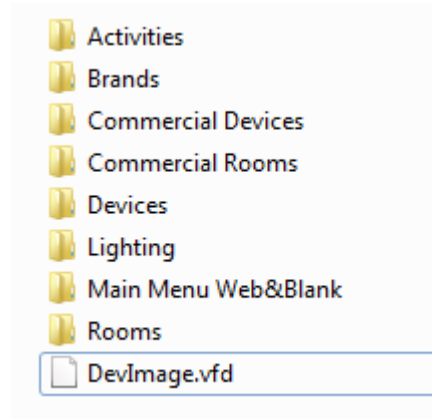


To Accomplish this follow these steps:

This example utilizes a TRC-1080 and the default image being changed is the icon for Camera.

	<ol style="list-style-type: none"><li>1. Navigate to <b>My Computer</b> and double click on the <b>C:</b> drive.</li><li>2. Look for the folder labeled <b>Program Files (x86)</b> and open it.</li><li>3. Search for the folder <b>Universal Remote Control, Inc</b> and open it.</li><li>4. Open the <b>URC Accelerator</b> Folder.</li><li>5. Scroll to the <b>Clients</b> folder and double click. <i>All URC interfaces are referred to as Clients in the software.</i></li><li>6. Find the <b>TRC-1080</b> folder and open it.</li><li>7. Double Click on <b>DevImages</b>.</li></ol>
---	---

8. Within the **DevImages** folders there are several different categories that the Expansion Pack installed, as well as a **DevImage.vfd** file.



9. Open up the **Devices** folder.

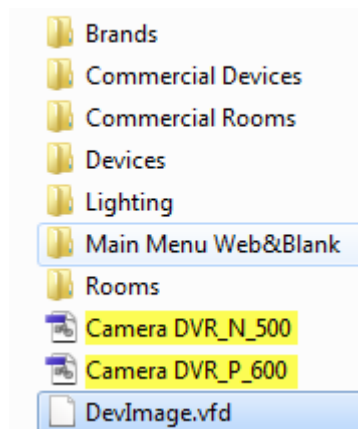
*This folder contains the various images for different devices installed by the Expansion Pack.*

10. Search for the image named **Camera DVR\_N500** and **Camera DVR\_P600** and select them.



11. The key is to bring these two images to the previous folder (**DevImages**). *NOTE: there are various ways to accomplish this, for this example select both images and right click. Select copy and return to the previous folder.*

12. Paste the two images next to the **DevImage.vfd** file.



13. Rename Camera DVR\_N\_500 to **Camera\_N\_500** and Camera DVR\_P\_600 to **Camera\_P\_600**.

*Every button within Accelerator is required to have an **Unpressed** and **Pressed** State:*

*Unpressed: must always be named as **(Button Name)\_N\_500**, "N" representing "Normal" (example uses Camera\_N\_500).*

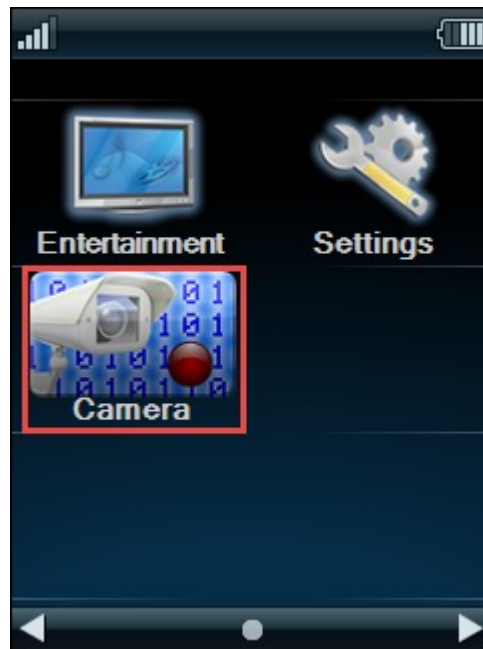
*Pressed: must always be named as **(Button Name)\_P\_600**, "P" representing "Pressed" (example uses Camera\_P\_600).*

14. Open Total Control Accelerator and go to **Step 10: Edit User Interfaces** and click **Accelerate**. For these changes to take affect it is required to **Accelerate** with the **ERASE** option.

**NOTE: Any custom changes previously made to user interfaces are lost when using the Erase option.**

15. Complete Steps 11-13 (*if not already completed*).

16. Click Step 14: Themes and Graphics and the default icon looks as follows:



*Once the default image has been changed using these steps, the icon for Camera changes automatically to this image selected on all future Total Control Projects. The same steps are applied to any other URC interface within the **Clients** folder.*

## **Custom Default Icons:**

Total Control allows installers to use their own custom images to replace default icons within Accelerator. This is accomplished by converting those images to the correct size that is required for the user interface being used (*refer to chart below*).

<b>User Interface:</b>	<b>Resolution:</b>
<b>Android &amp; iOS:</b>	
Main Menu:	512x389
Sub-Menu	120x120
<b>TKP-7000:</b>	
Main Menu:	119x108
Sub-Menu	48x48
<b>TKP-5500:</b>	
All Icons:	106x64
<b>TKP-2000:</b>	
All Icons:	106x64
<b>TKP-1280:</b>	
All Icons:	120x72
<b>TRC-1080:</b>	
All Icons:	106x64
<b>MRX-20:</b>	
Main Menu:	119x108
Sub-Menu:	48x48

*Remember for Android, iOS, and the TKP-7000 that Main Menu and Sub-Menu icons have different sizes.*

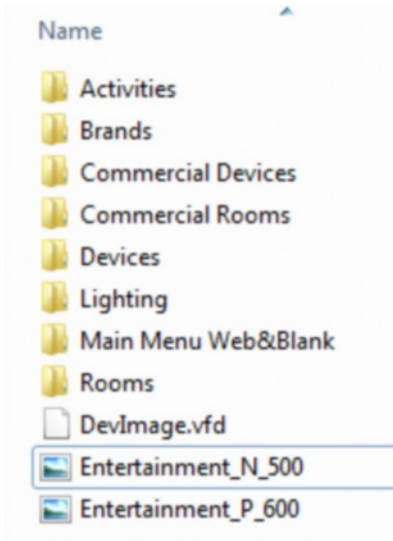
Follow these steps to incorporate custom default icons:

*This example uses a TRC-1080. Prior to beginning these steps, resize the image desired to 106x64 and save the image as .png file. Additionally this example uses a custom image to change the default on the Entertainment Icon.*

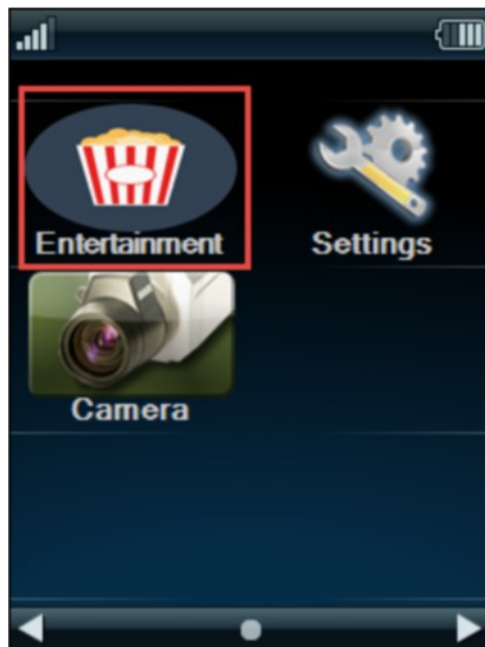
1. Navigate to the DevImages folder (*refer to [page 4](#)*).
2. Rename the image chosen to **Entertainment\_N\_500** and **Entertainment\_P600**.  
*Note: Custom images must be saved as a .png file in order for Accelerator to recognize.*
3. Drag the two renamed images into the DevImages folder right next to the .vdf file.  
*The .vdf file in this folder contains the default button set; however, Accelerator looks outside this file first for buttons. Placing new images here replaces the existing default buttons.*



4. Once the files are in the **DevImages** folder (*as seen below*), Open Accelerator or restart Accelerator.



5. For existing projects, **Re-Accelerate** in **Step 10: Edit User Interface**. The new default image is displayed in Step 14: Themes & Graphics.



For further assistance, please contact our Technical Support.



500 Mamaroneck Avenue, Harrison, NY 10528  
Phone: (914) 835-4484 Fax: (914) 835-4532  
[www.universalremote.com](http://www.universalremote.com)