



PNMsoft Knowledge Base
Sequence User Guides
UX Studio Overview

© 2013 PNMsoft All Rights Reserved

This document, including any supporting materials, is owned by PNMsoft Ltd and/or its affiliates and is for the sole use of the PNMsoft customers, PNMsoft official business partners, or other authorized recipients. This document may contain information that is confidential, proprietary or otherwise legally protected, and it may not be further copied, distributed or publicly displayed without the express written permission of PNMsoft Ltd. or its affiliates.

PNMsoft UK 38 Clarendon Road Watford Hertfordshire WD17 1JJ

Tel: +44(0)192 381 3420 • Email: info@pnmsoft.com • Website: www.pnmsoft.com

Microsoft Partner

Gold Application Development

TABLE OF CONTENTS

Overview	1
Form Concepts	2
Form Definition	2
Data Model	2
Entity Model	3
Form Template.....	4
Data Model Wizard	4
UX Studio Canvas	5
View First vs. Data Model First.....	5
Form Controls	5
Modes of Work.....	6

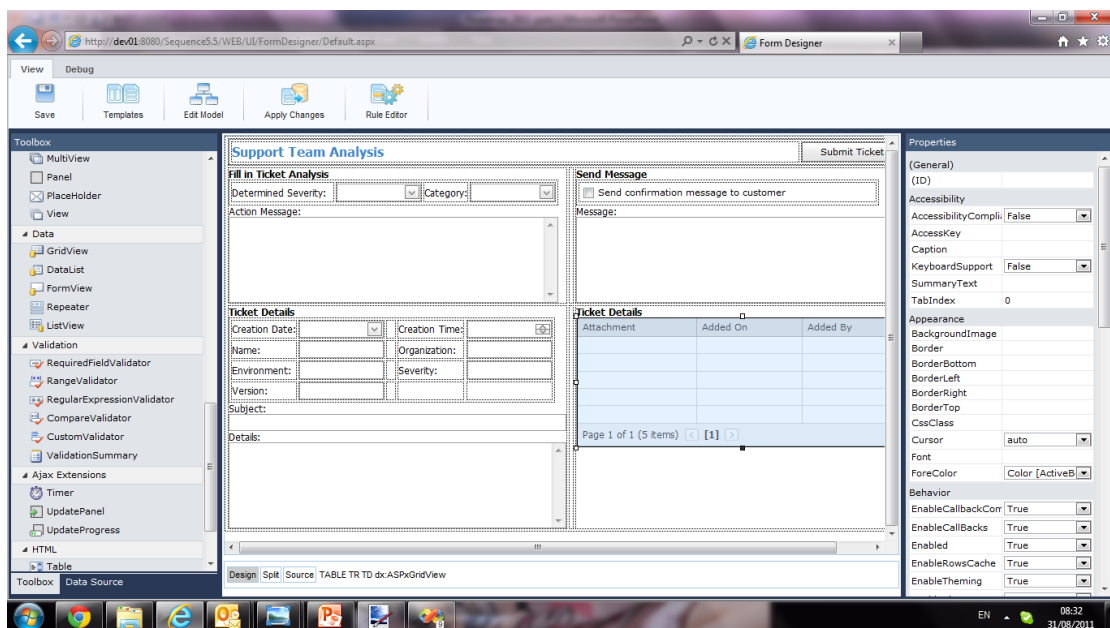
Overview

Sequence's UX Studio is a .NET markup editor in a 100% web development environment, enabling developers to rapidly collaborate on forms which revolutionize the end-user experience. The UX Studio includes separate modes of work for basic and advanced users.

One of its major improvements is that the new UX Studio separates the data model from the view, enabling you to work on each separately. This could enable you to create several different views of a form using the same data model, for example a PC view and a mobile view

Some of the UX Studios strengths include:

- Full ASP.NET Ajax forms (instead of XML/XSLT mode forms).
- Data Model and Template/Views are separate, boosting flexibility and rendering time.
- Form objects have state, and markup is saved so forms are not calculated repeatedly.
- The Form engine delivers much faster load and submit time.
- Developers can write server side actions, saving client side time and traffic.



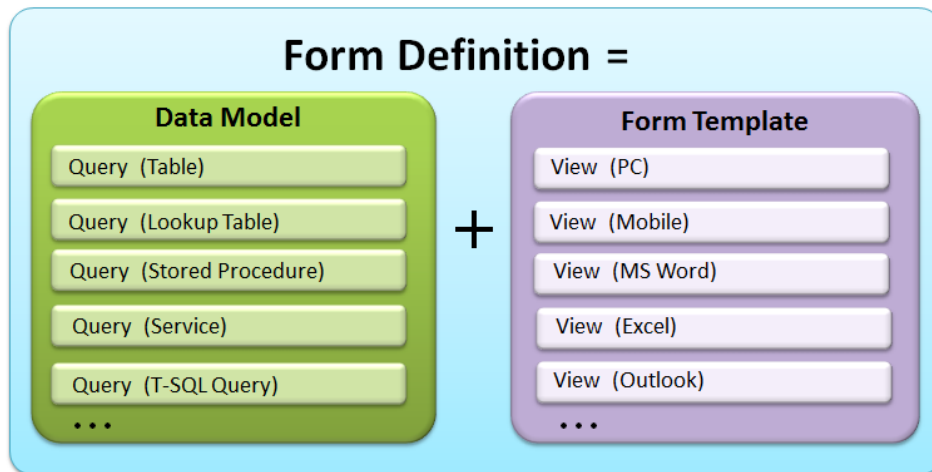
UX Studio

The following section introduces you to some of the Sequence Form concepts.

Form Concepts

Form Definition

Each Form and Task Activity has a Form Definition, comprised of a Data Model and a Form Template. The Data Model includes queries which connect to data sources. The Form Template is comprised of one or more form views for various platforms (e.g. PC, Mobile).

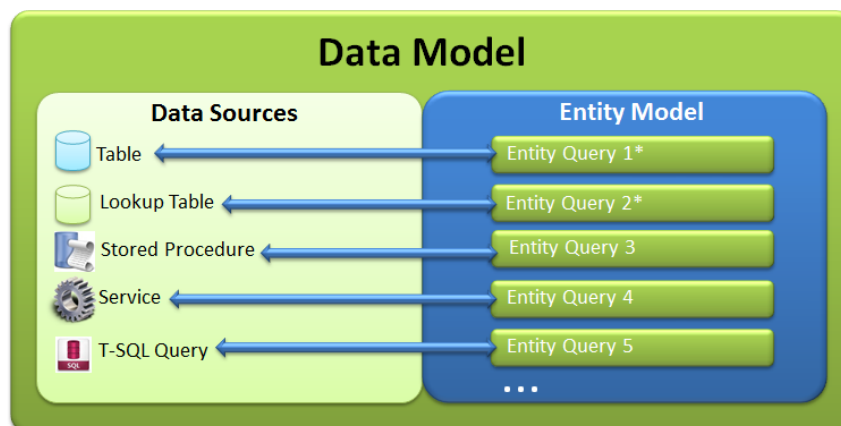


Form Definition

Data Model

Sequence enables you to define the Form's Data Model. The Data Model consists of an Entity Model of queries which are connected to five possible types of data sources:

- Tables
- Lookup Tables
- Stored Procedures
- Services (e.g. WCF, Web Service, External Service)
- T-SQL Queries



*Supports LINQ operations

Data Model

Entity Model

Each Entity Model is comprised of one or more entity queries. Entity queries can be of two types:

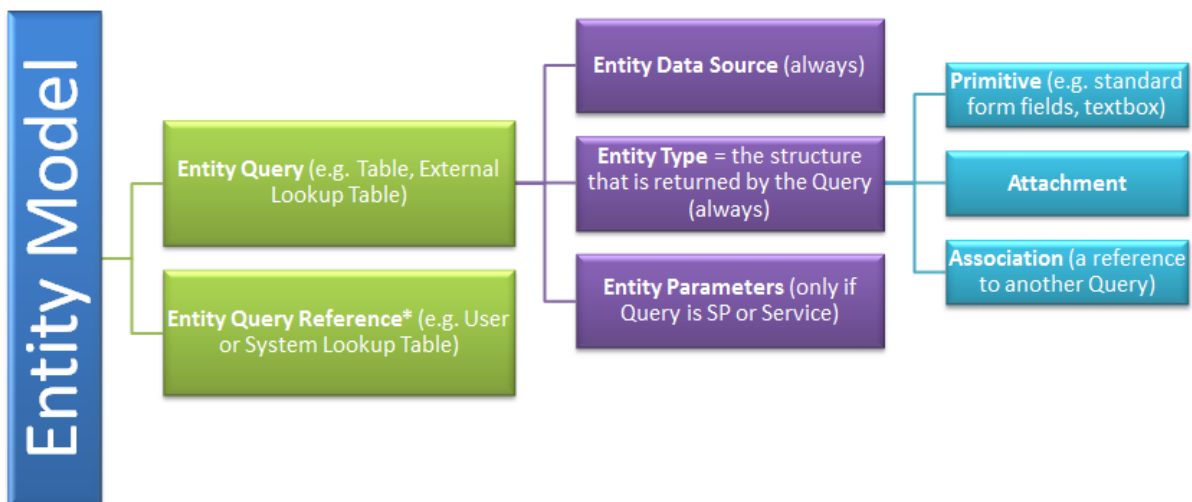
- Entity Query
- Entity Query Reference: points to an entity query in another Entity Model (a reference to a user or system lookup table)

Each Entity Query consists of:

- Entity Data Source (*Always*)
- Entity Type: the structure that is returned by the Query. (*Always*)
- Entity Parameters (*Only if the Query is SP or Service*)

Each Entity Type can be one of the following types:

- Primitive (e.g. standard form fields, textbox, etc.)
- Attachment
- Association (a reference to another query)

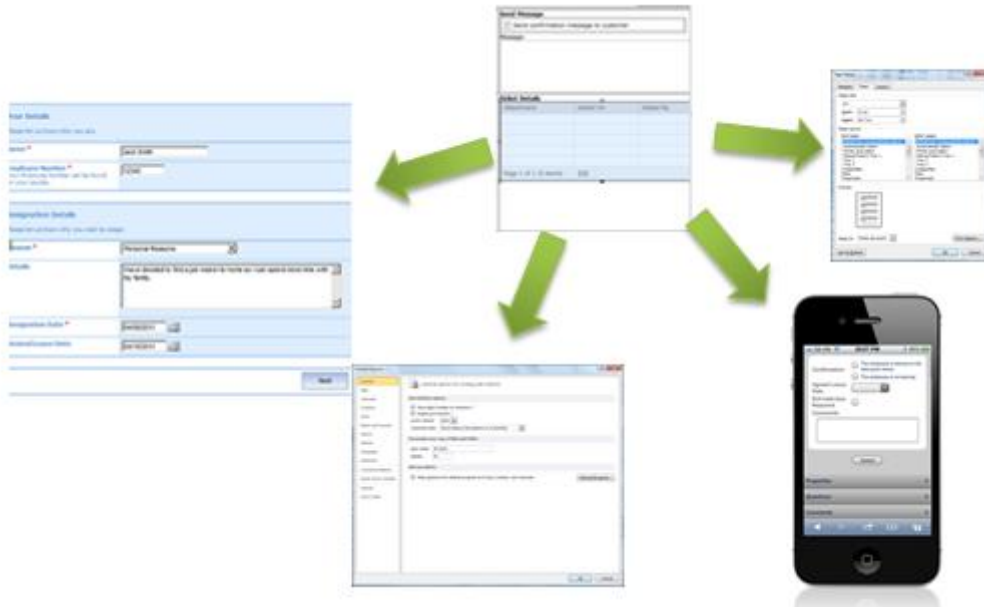


Entity Model

Form Template

The Form Template is comprised of one or more views. Each view is designed for a different technology. Currently, Sequence supports a view based on ASP.NET technology.

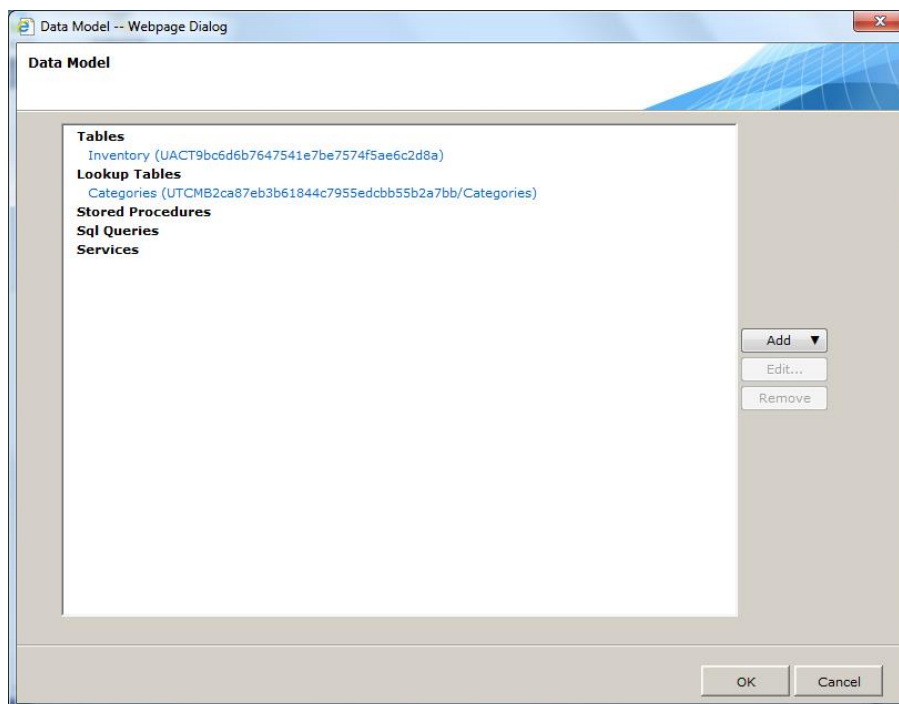
Multiple view examples: View for browser, mobile. The UX Studio is built for additional technologies in the future (e.g. Office, Word documents).



Multiple Views

Data Model Wizard

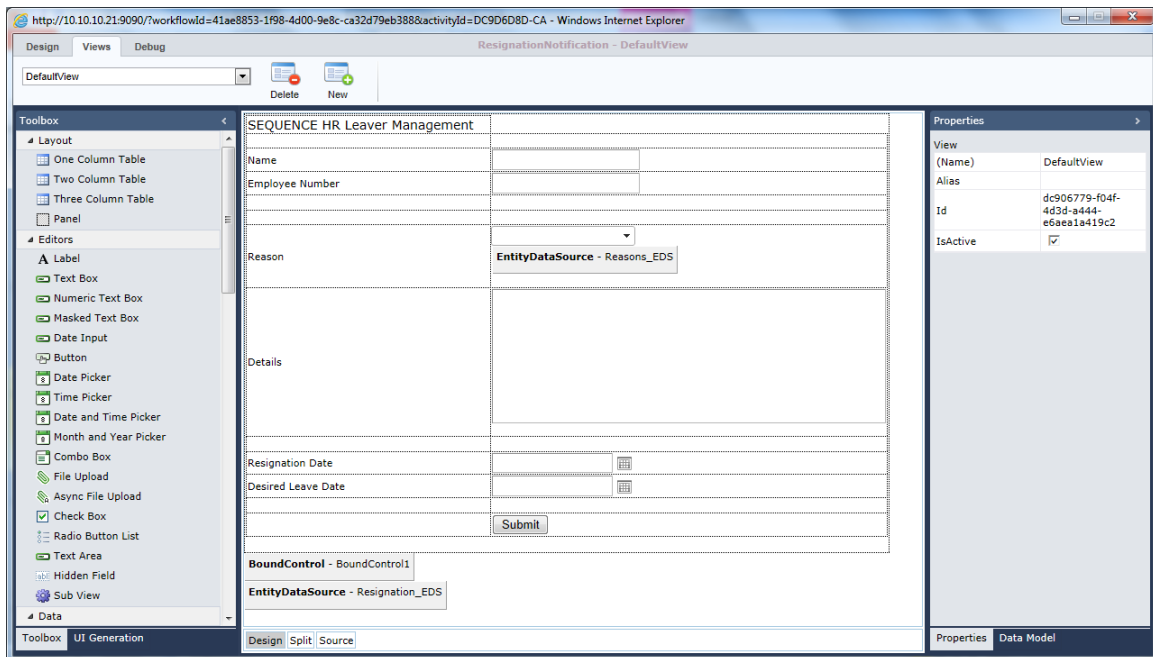
The Data Model Wizard enables you to define and edit a form's data model:



Data Model Wizard

UX Studio Canvas

Using the UX Studio Canvas, you can define the form's template (views).



UX Studio Canvas

The UX Studio Canvas enables you to:

- Add controls to the view.
- Bind each control to a data source.
- Edit control properties.
- Add grids, tables and fields to a form view.
- Edit the Data Model.
- Manage Views.
- Toggle between Basic and Advanced modes.
- Save and Reload the form.
- Debug your workflow.

View First vs. Data Model First

The UX Studio enables you to define the Data Model first and then the form template (view), or the View first and then the Form's Data Model.

The best practice is to build the Data Model first, but the View First option may be desirable for building a form rapidly, especially for business users.

Form Controls

Sequence provides form controls which include multiple properties and options, and can be quickly configured to suit your user display and functionality requirements.

Modes of Work

The UX Studio includes the following modes:

- **Basic Mode** which includes basic form properties and features only. The Basic Mode is intended to enable business users to rapidly design forms.
- **Advanced Mode** which includes all form properties and features. The Advanced Mode is intended for Developers with some ASP.NET experience, and enables them to build forms with advanced functionality.

You can toggle between Basic and Advanced Modes from the UX Studio Canvas ribbon.