

# Sequence Kinetics SP2

## Release Notes

Issue Date: 11<sup>th</sup> March 2013

© 2013 PNMsoft All Rights Reserved

No part of this document may be reproduced in any form by any means without the prior authorisation of PNMsoft.

PNMsoft UK 38 Clarendon Road Watford Herts W17 1JJ

Tel: +44(0)192 381 3420 • Email: [info@pnmsoft.com](mailto:info@pnmsoft.com) • Website: [www.pnmsoft.com](http://www.pnmsoft.com)



**Microsoft** Partner

Gold Independent Software Vendor (ISV)

## Contents

<b>INTRODUCTION .....</b>	<b>4</b>
<b>INSTALLATION .....</b>	<b>4</b>
NEW SEQUENCE 7.2 INSTALLATION.....	4
UPGRADING FROM SEQUENCE v6.4.4 OR LATER.....	4
UPGRADING FROM SEQUENCE VERSIONS 6.4.3 OR EARLIER.....	4
<b>NEW FEATURES .....</b>	<b>5</b>
DYNAMIC MESSAGE ASSIGNMENT.....	5
QUICKWATCH.....	9
COMPATIBILITY WITH NEW TECHNOLOGIES .....	10
EXTENSIONS.....	11
<b>ENHANCED FEATURES .....</b>	<b>13</b>
MULTILINGUAL MESSAGING .....	13
ENABLE/PREVENT COMMENTS DELETION .....	14
<b>RESOLVED SUPPORT CASES.....</b>	<b>14</b>
<b>ADDRESSED CRS .....</b>	<b>14</b>
<b>KNOWN ISSUES .....</b>	<b>14</b>

## Introduction

Sequence Kinetics SP2 (SEQUENCE v7.2) is an official product release incorporating new features and fixes. For a complete list of Sequence Kinetics's major features, [click here](#). This document details the features added in the latest update, SP2. Sequence Kinetics SP2 was approved for release by PNMsoft QA on March 15<sup>th</sup>, 2013.

## Installation

You can download the installation files from the [Download Centre](#).

SEQUENCE 7.2 installation requires Windows Server 2008 SP2 or later, and a 64-bit processor with 4 cores.

### New SEQUENCE 7.2 Installation

1. Unzip the file *7.2.0.0Installation/Setup Or Upgrade/7.2.0\_Installation.zip*.
2. Run *7.2.0\_Setup.exe* (it is in the zip file).
3. Follow the instructions in the [SEQUENCE 7.0 Installation Guide](#) in the [Knowledge Centre](#).

### Upgrading from SEQUENCE v6.4.4 or later

1. Verify that version 6.4.4 or later is installed on your server.
2. Backup the configuration files and your database.
3. Free up system resources:
  - i. Use the IISReset command-line utility to reset the IIS.
  - ii. Stop the Windows Service and the Active Directory Service.
4. Download and run the file:  
*7.2.0.0Installation/Setup Or Upgrade/7.2.0\_Installation.zip*
5. Run IISReset.

*Note: If you are using a VPC, please consider backing it up before the upgrade.*

### Upgrading from SEQUENCE Versions 6.4.3 or Earlier

A direct upgrade to version 7.2 has not been tested and may cause server instability. Therefore, please update/upgrade your SEQUENCE application to version 6.4.4 using the upgrade file in *6.4.0.0 Installation/Setup Or Upgrade* and then upgrade to version 7.2 as detailed in Upgrading from SEQUENCE v6.4.4 or later above.

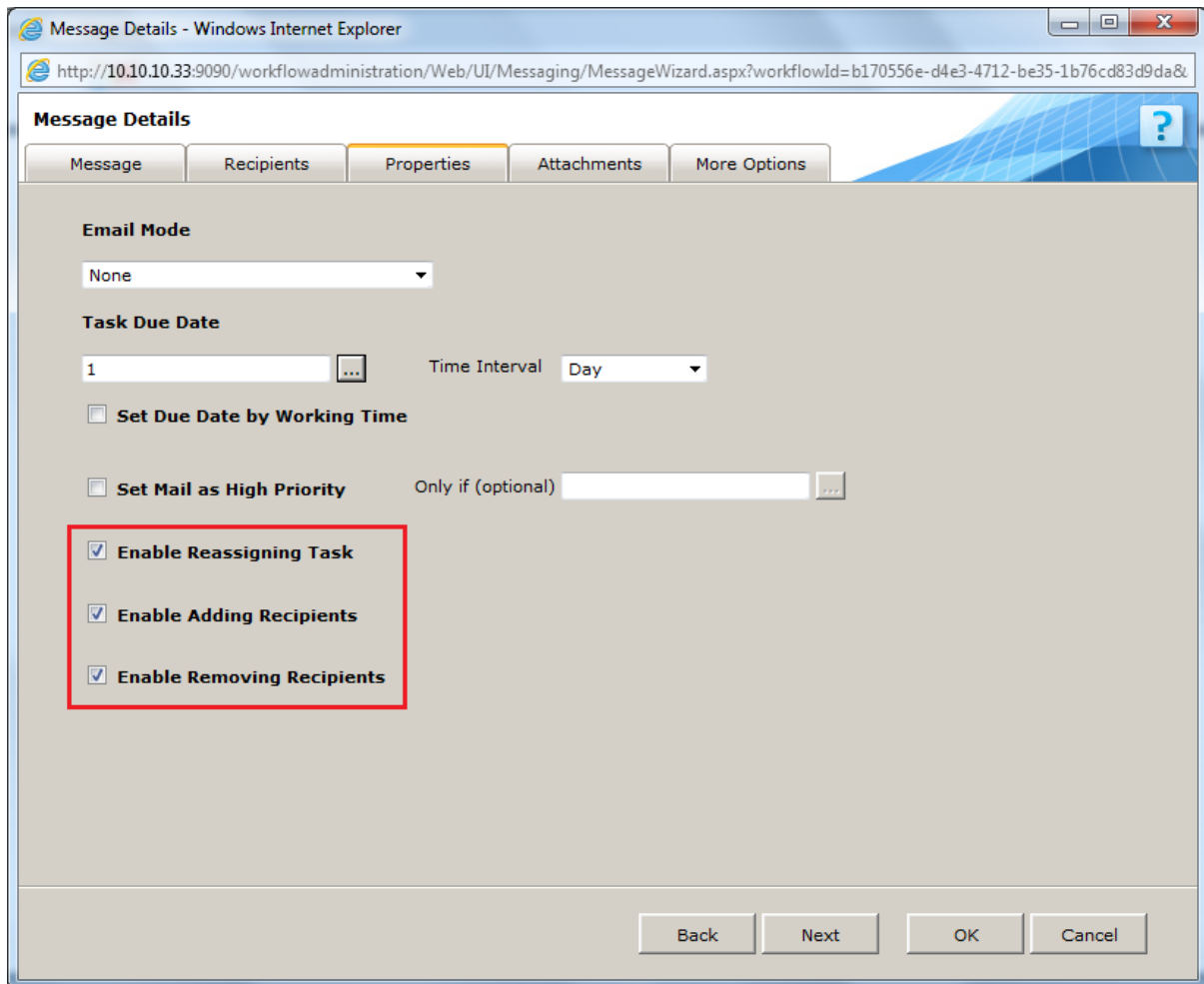
## New Features

### Dynamic Message Assignment

SP2 includes dynamic message assignment, enabling end users to route task flow dynamically to new owners and recipients during runtime. Dynamic message assignment help teams deal with unforeseen situations, giving them greater flexibility to make ad hoc decisions on the spot and achieve better results. The following dynamic message assignment features are included in SP2:

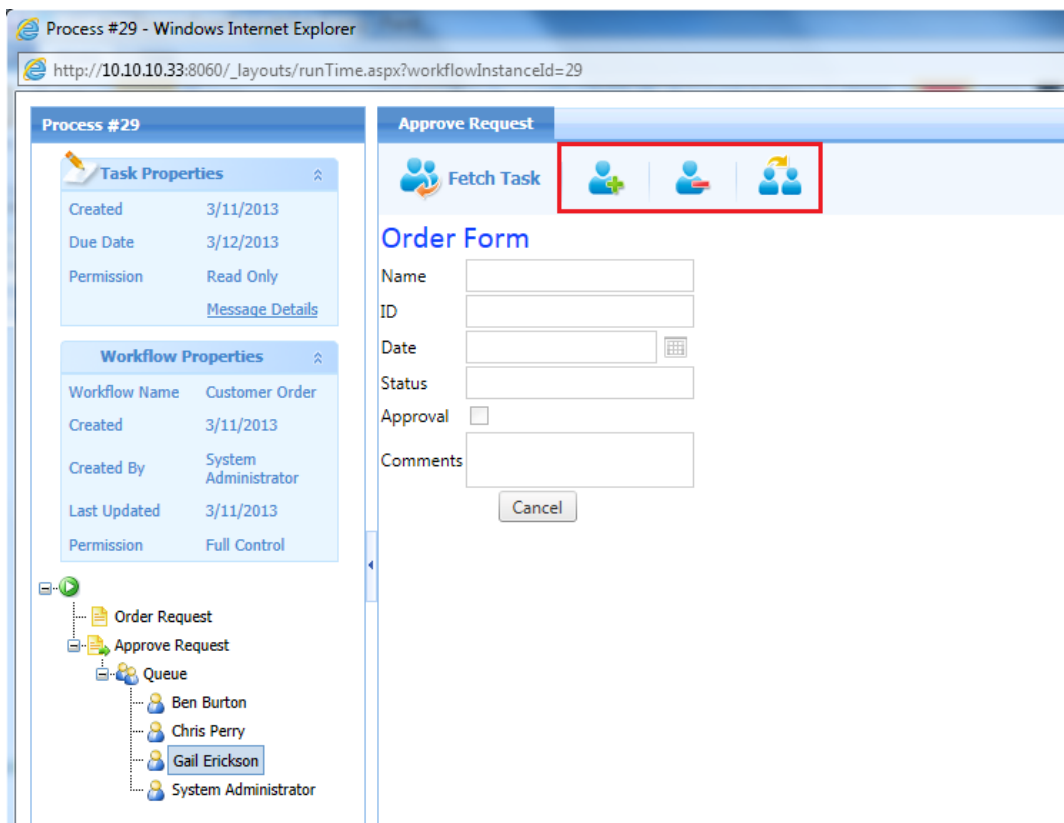
- Reassign Task
- Add Recipients
- Recall Task

Developers can enable these features for end-users in the Message Wizard > Properties tab:



### Message Wizard – Enable Dynamic Message Assignment

If these options have been enabled, they are displayed for the end-user in the Flowtime Process Page:



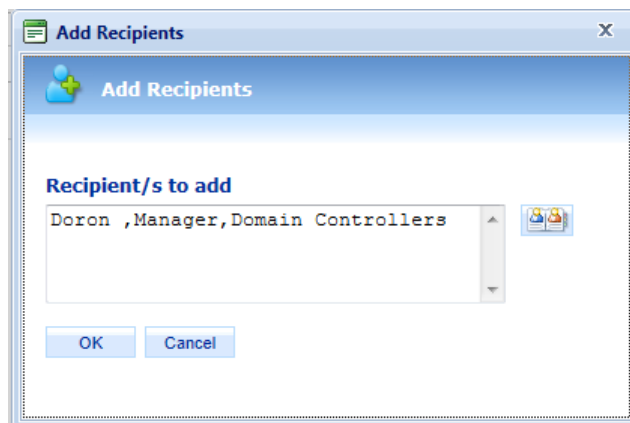
### Process Page – Dynamic Message Assignment Options

*Note: To use Dynamic Message Assignment options, the end-user must have Read-Write permission on the Task.*

*Note: The Fetch Task button has changed appearance. If your client-side script uses the Fetch/Return div, your code must be modified since the code has been changed.*

### Add Recipients

End-users can add task recipients in an ad hoc fashion during runtime. The new recipients will receive a message in their Inbox.



### Add Recipients

---

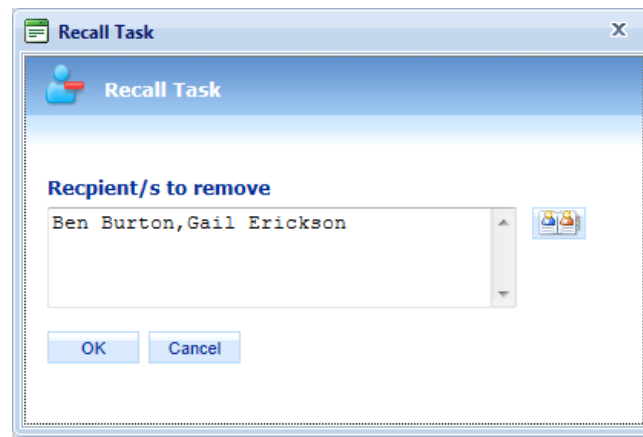
*Notes: End-users can add users, departments or roles.*

*You can only add recipients if the Task is not fetched.*

*Recipients who were added will have the same queue functionality as the exiting recipients.*

### Recall Task

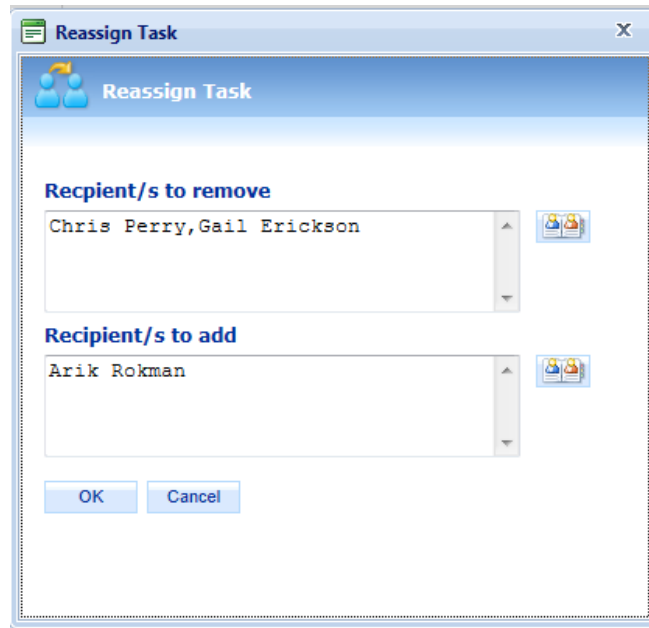
End-users can recall tasks from specific recipients. The end-user selects which recipient(s) to remove from the task (he cannot remove all recipients – at least one must remain). The recipient(s) who have been removed will receive an email that the task was recalled (the subject will begin with: Message Recalled: <Task Name>).



**Recall Task**

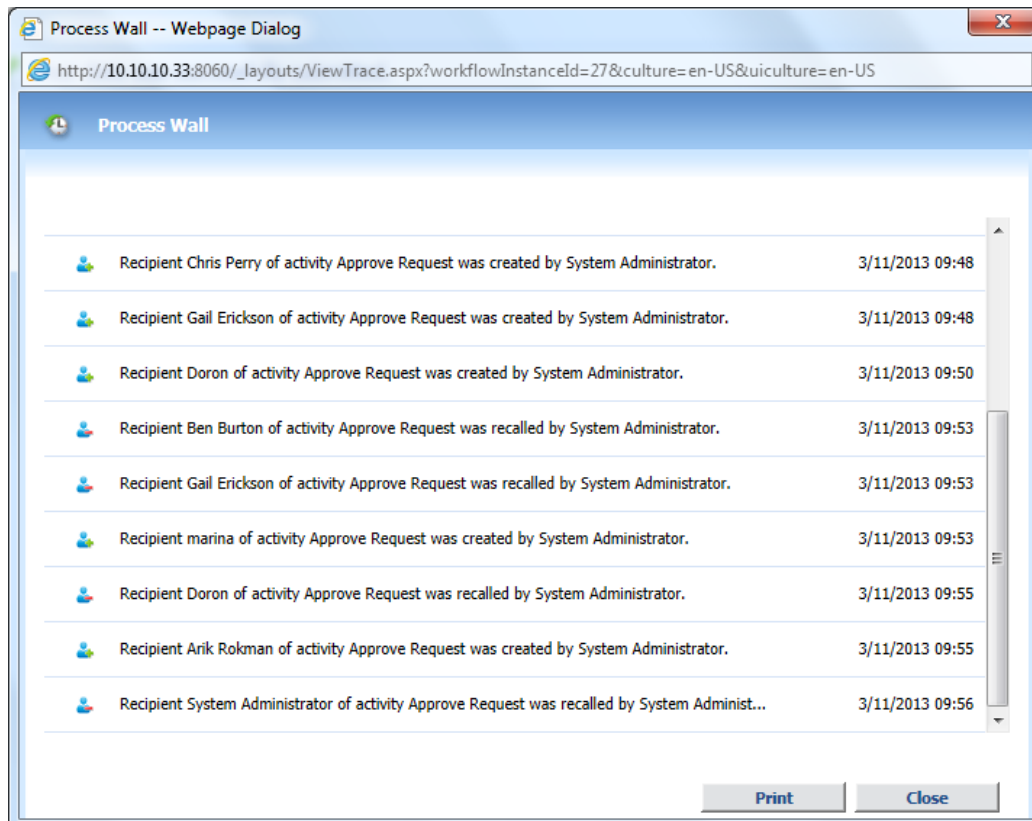
### Reassign Tasks

End-users can reassign tasks to alternate recipients in an ad hoc fashion during runtime. The removed recipient(s) will receive a message that the task has been re-called. New recipients will receive a message. The end-user can decide on the scope of the reassignment by selecting 1-n recipients from the recipients' tree.



### Reassign Task

The Process Wall displays all dynamic message assignments:



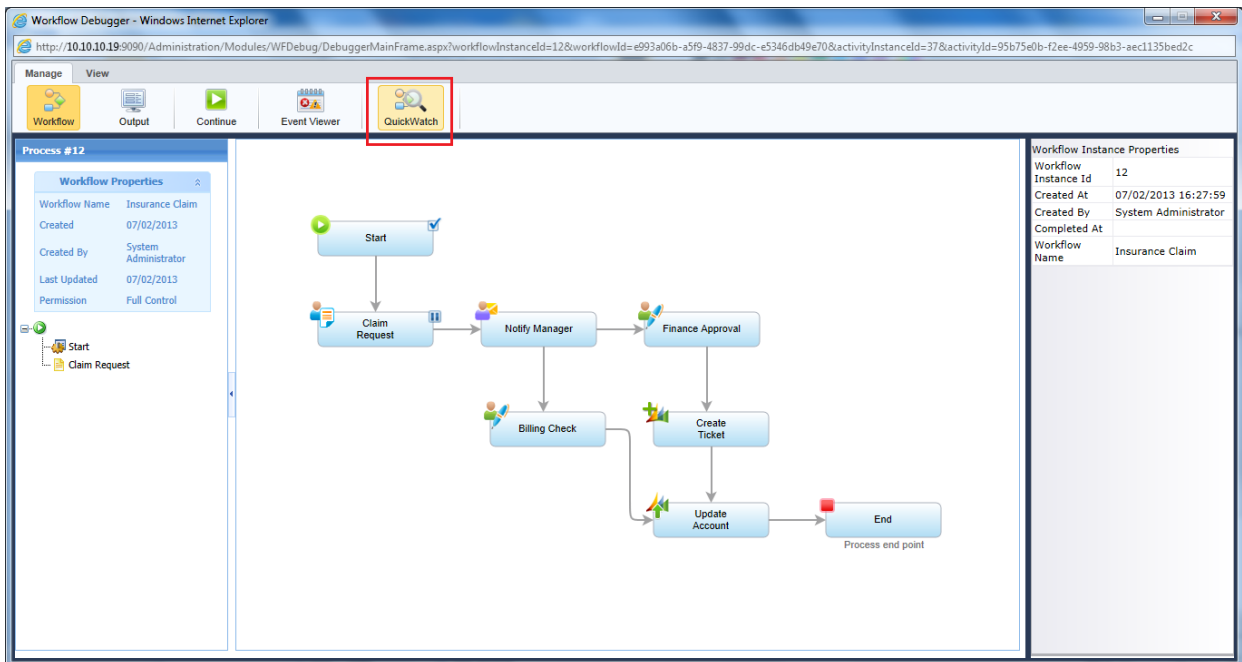
### Process Wall

[Click here](#) to read more about Dynamic Message Assignment.



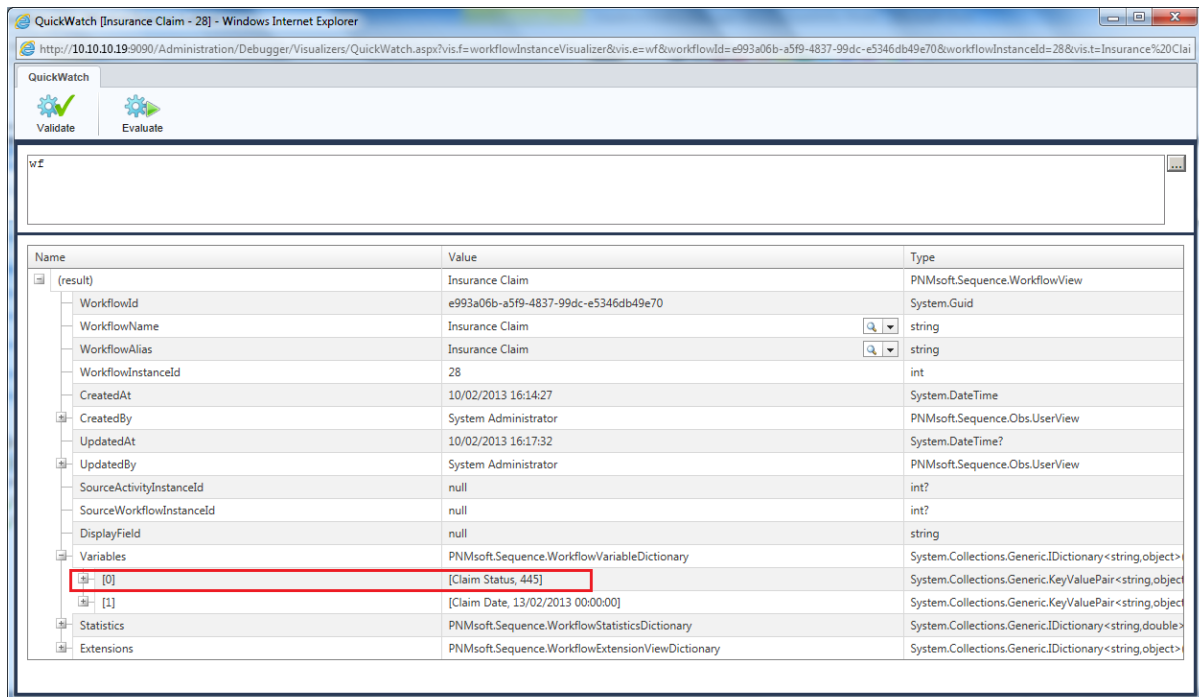
## QuickWatch

It's not always easy to achieve visibility on workflow data. Using QuickWatch, you can zoom in and analyse workflow metadata, data, variables or expressions. This enables you to troubleshoot and monitor the workflow during development or even in production. You can use QuickWatch to monitor the value of any item or expression which you can generate in Sequence Kinetics' Expression Wizard.



### Sequence Kinetics Debugger – QuickWatch

The evaluation result is displayed in a hierarchical view, enabling you to drill down into the result structure and examine the instance metadata and data, such as: UACT tables data, integration activities request/response, etc. In addition, there is a set of object visualizers that provide an alternative and user-friendly view of the elements in the result hierarchy.



### QuickWatch Window

[Click here](#) to read more about QuickWatch.

## Compatibility with New Technologies

### SharePoint 2013

SP2's Flowtime can be hosted in SharePoint 2013 (in addition to SharePoint 2007 and 2010). You can now benefit from SharePoint 2013's enhanced functionality as part of your Sequence Kinetics business process solution. [Click here](#) for more information about SharePoint 2013 functionality.

### IE 10 Support

SP2 Supports IE 10, both for designing workflows in the Administration and App Studio, and running business process applications in Flowtime.

### .NET 4.0 Support

SP2 supports .NET 4.0. Applications that are running on .NET 4.0 (for example, SharePoint 2013) can host Sequence Kinetics engine and components.

### Windows Server 2012 Installation

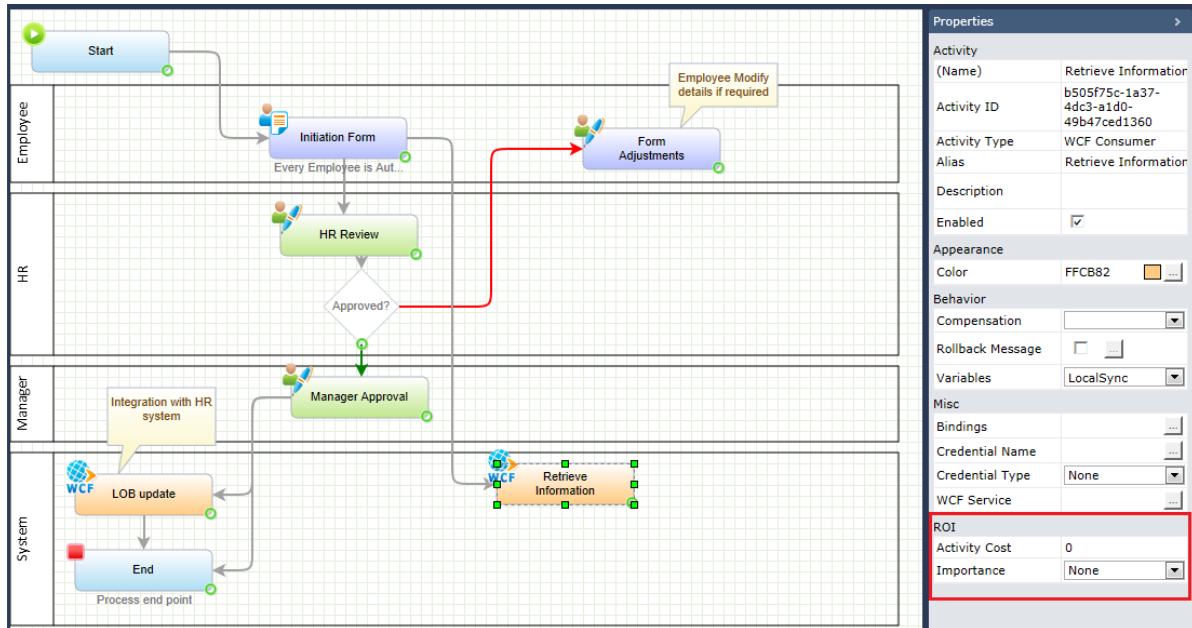
SP2 can be installed on [Windows Server 2012](#).

### SQL Server 2012

SP2 supports installation with an [SQL Server 2012](#) database.

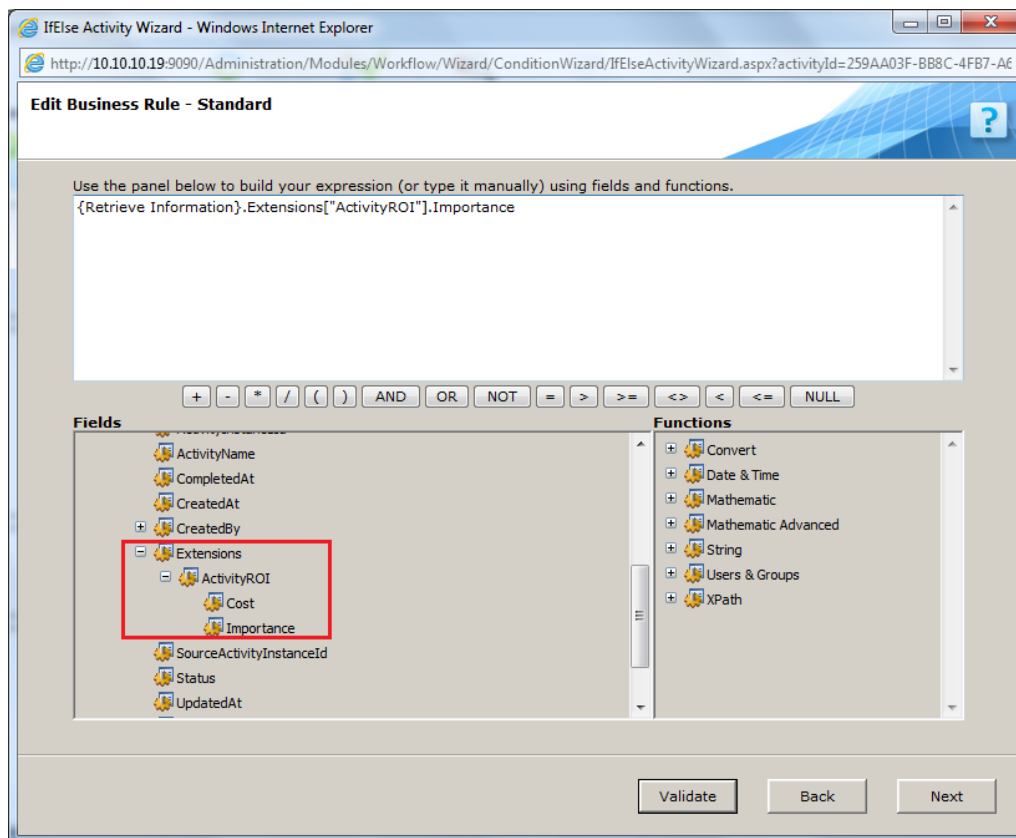
## Extensions

Sequence Kinetics provides the ability to rapidly extend your solution with elements and functionality you need for your specific implementation, department or industry. You can extend the workflow and activity objects with additional properties, and even add GUI wizards for developers or business users, extending functionality.



### Extensions Added to Activity Properties

The properties you add are included in the object model and developers can access them from within Sequence Kinetics Expression wizards or while using the product API. This means that workflow behaviour can be affected by using these extensions in business rules or any other expression.



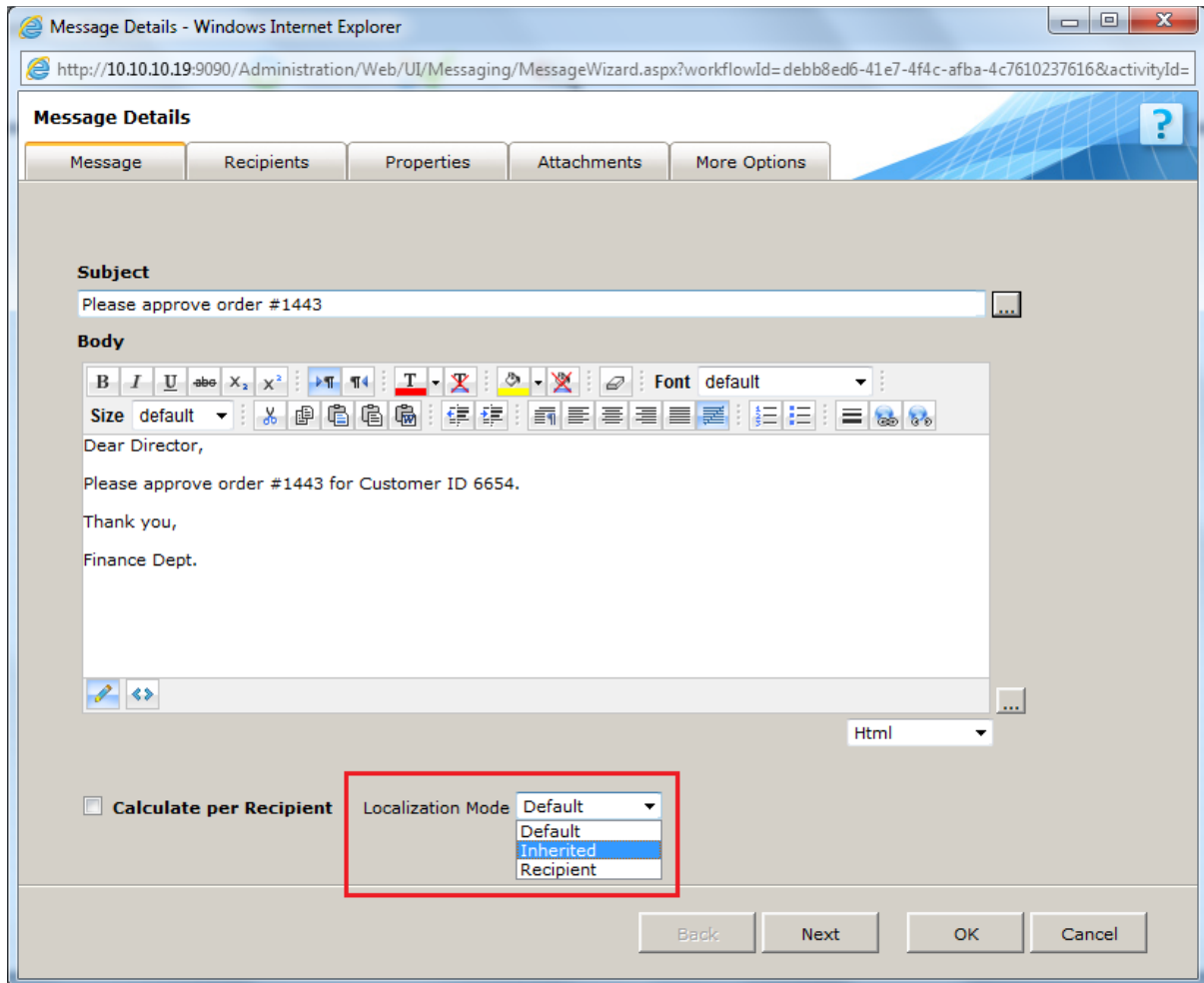
### Extensions in Expression Wizard

[Click here](#) to read more about Extensions.

## Enhanced Features

### Multilingual Messaging

You can set the Localization mode for messages in the Message Wizard – Message Tab:



#### Message Wizard – Localization Mode

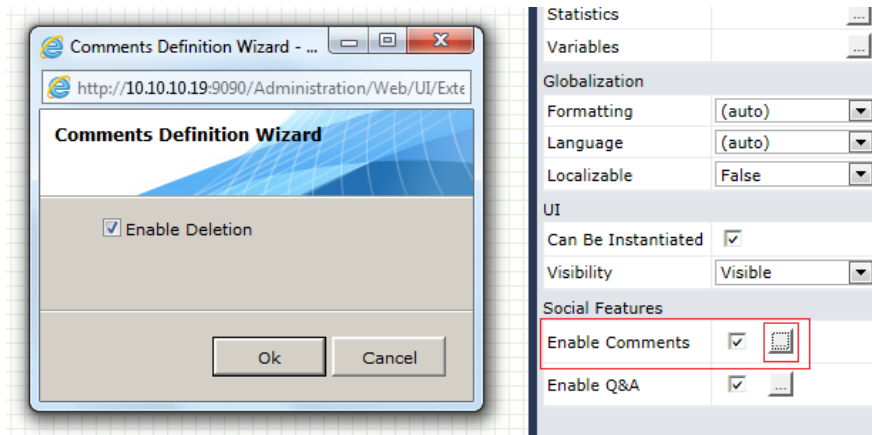
The following localization options are available:

- Default: use the culture of the current thread (i.e. of the system that is creating the message).
- Inherited: use the culture of the parent of a message, usually a workflow. If the message does not have a parent, this is the same as the default option.
- Recipient: use the culture of the recipient of the message.  
"Culture" here refers to language and other localised formatting.

[Click here](#) for more information about creating multilingual workflows.

## Enable/Prevent Comments Deletion

Developers can enable or prevent end-users from deleting their own comments:



### Enable/Prevent Comment Deletion

## Resolved Support Cases

The following Support Cases were addressed in this version: #8218

## Addressed CRs

5117 - Remove 25 characters limitation in field name

3688 - A way to refresh queue membership within the task tree

## Known Issues

See known issues online at:

<http://members.pnmssoft.com/Downloads/Lists/Known%20Issues/AllItems.aspx>