

# Sequence Kinetics SP5

## Release Notes

Issue Date: 11<sup>th</sup> Sept 2013

© 2013 PNMsoft All Rights Reserved

No part of this document may be reproduced in any form by any means without the prior authorisation of PNMsoft.

PNMsoft UK 38 Clarendon Road Watford Herts W17 1JJ

Tel: +44(0)192 381 3420 • Email: [info@pnmsoft.com](mailto:info@pnmsoft.com) • Website: [www.pnmsoft.com](http://www.pnmsoft.com)



**Microsoft** Partner

Gold Independent Software Vendor (ISV)

---

## Contents

<b>INTRODUCTION .....</b>	<b>4</b>
<b>INSTALLATION .....</b>	<b>4</b>
NEW SEQUENCE 7.5 INSTALLATION.....	4
UPGRADING FROM SEQUENCE v7.0 OR LATER.....	4
UPGRADING FROM VERSIONS PRIOR TO v7.0.....	4
<b>NEW FEATURES .....</b>	<b>5</b>
VIEW FIRST.....	5
COMBO BOXES MADE EASY.....	8
<b>ENHANCED FEATURES .....</b>	<b>10</b>
CONNECT ACTIVITIES .....	10
DATA TAB IN UX STUDIO .....	10
UX STUDIO OPTIONS.....	11
GRID FEATURES.....	12
SUB VIEWS DISPLAYED IN FORMS.....	14
ADDING WORKFLOWS TO CATEGORIES.....	14
<b>BREAKING CHANGES.....</b>	<b>15</b>
<b>KNOWN ISSUES .....</b>	<b>16</b>

## Introduction

Sequence Kinetics SP5 (SEQUENCE v7.5) is an official product release incorporating new features and fixes. SP5 introduces View First, a faster, simpler way of creating forms, especially for Power Users. It also includes ready-made form templates, a new GUI for editing combo boxes, and more features which make work with forms quick and easy.

For a complete list of Sequence Kinetics's major features, [click here](#). This document details the features added in the latest update, SP5. Sequence Kinetics SP5 was approved for release by PNMsoft QA on Sept 11<sup>th</sup>, 2013.

## Installation

You can download the installation files from the [Download Centre](#).

SEQUENCE 7.5 installation requires Windows Server 2008 SP2 or later, and a 64-bit processor with 4 cores.

### New SEQUENCE 7.5 Installation

1. Unzip the file *7.5.0.0Installation/SequenceKinetics7.5\_Setup\_x64.zip*.
2. Run *7.5.0\_Setup.exe* (it is in the zip file).
3. Follow the instructions in the [SEQUENCE 7.x Installation Guide](#) in the [Knowledge Centre](#).

### Upgrading from SEQUENCE v7.0 or later

1. Verify that version 7.0 or later is installed on your server.
2. Backup the configuration files and your database.
3. Free up system resources:
  - i. Use the IISReset command-line utility to reset the IIS.
  - ii. Stop the Windows Service and the Active Directory Service.
4. Download and Unzip the file *7.5.0.0Installation/SequenceKinetics7.5\_Setup\_x64.zip*
5. Run *7.5.0\_Setup.exe* (it is in the zip file).
6. Run IISReset.

*Note: If you are using a VPC, please consider backing it up before the upgrade.*

### Upgrading from Versions Prior to v7.0

A direct upgrade to version 7.5 has not been tested and may cause server instability. Therefore, please update/upgrade your SEQUENCE application to version 7.4 using the upgrade file in *7.4.0.0 Installation/SequenceKinetics7.4\_Setup\_x64.zip* and then upgrade to version 7.5 as detailed in Upgrading from SEQUENCE v7.0 or later above. Versions prior to 6.4.3 must be upgraded to 6.4.4 prior to this step.

## New Features

### View First

SP5 assumes that as a 'Power User', you would like to get started creating your Form view right away, without dealing with the Form's Data Model. The new **First define view** option lets you do this. **First define view** is now the default option when you create a Form:

The screenshot shows a web browser window displaying the 'Form Definition' wizard. The browser's address bar shows the URL: `http://10.10.10.5:9090/Administration/Web/UI/ComponentWizard.aspx?workflowId=6bc5dee7-b753-4f42-840f-706c40f8fd14&activityId=12283C78-`. The page title is 'Form Definition'. The main content area is titled 'Form Creation Method' and contains four radio button options:

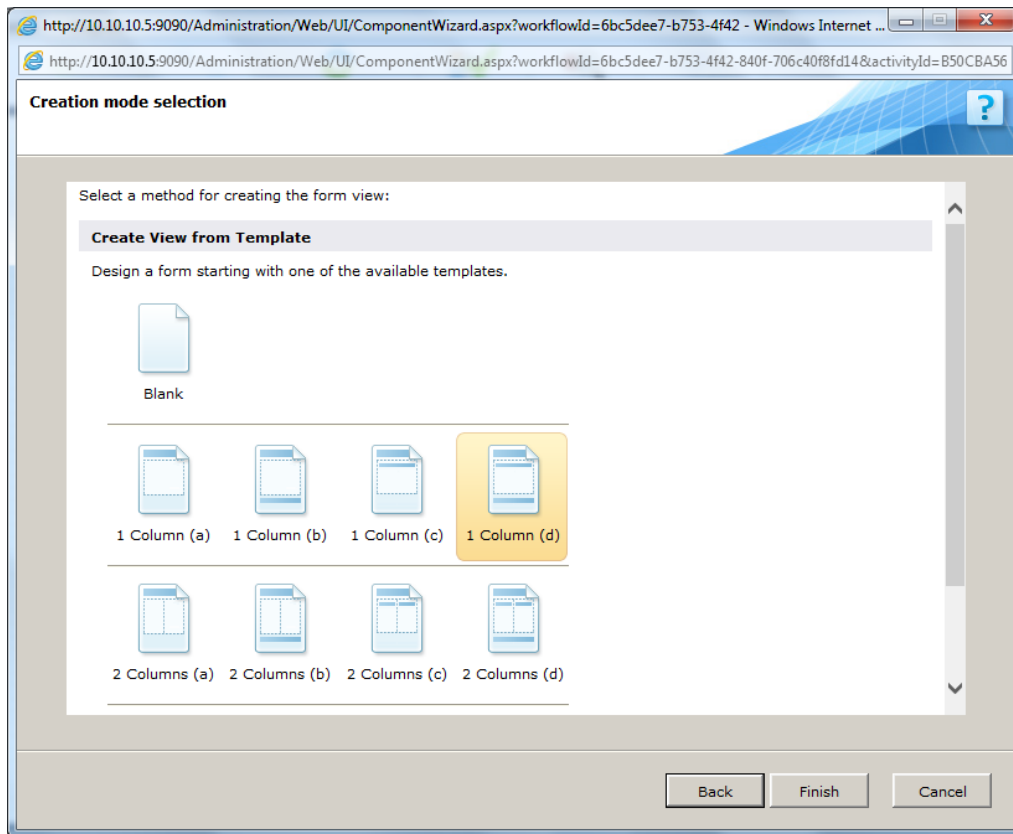
- New Form**  
Create a new form.
- Duplicate Form**  
Create an independent copy of any form that already exists in the database. Data Model, Data Tables and Views will be duplicated.
- First define view**  
First create the form's view, leave data model configuration until later.
- First define data**  
First define the form's data model and then create its view.

Below these options is a checkbox labeled 'Use "Fast Track" option' which is checked. At the bottom of the wizard are three buttons: 'Back', 'Next', and 'Cancel'.

### View First

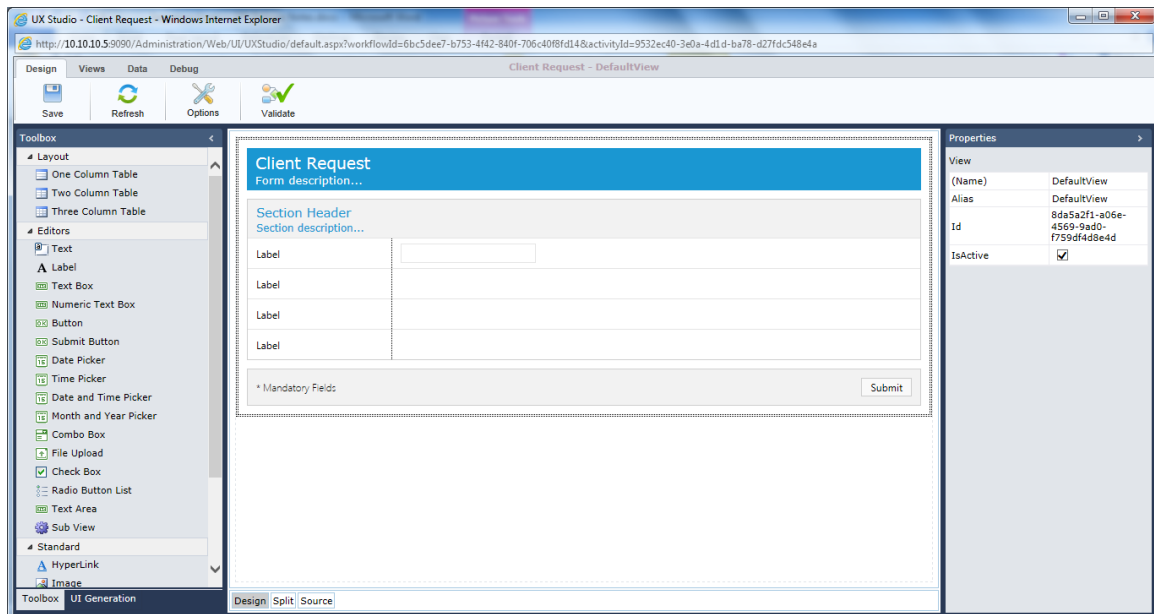
*Note: You can edit the Data Model first if you prefer, by clicking 'First define data'.*

After clicking **Next**, you can select from a list of pre-made Form templates:



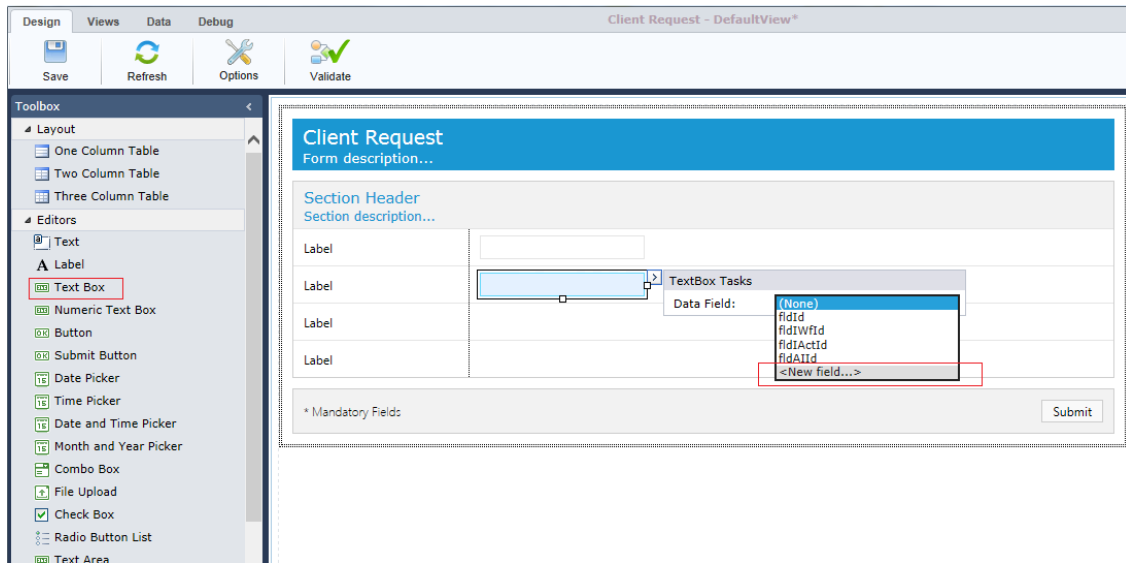
### Crew View from Template

Click **Finish**, and your Form View is generated based on the template you selected:



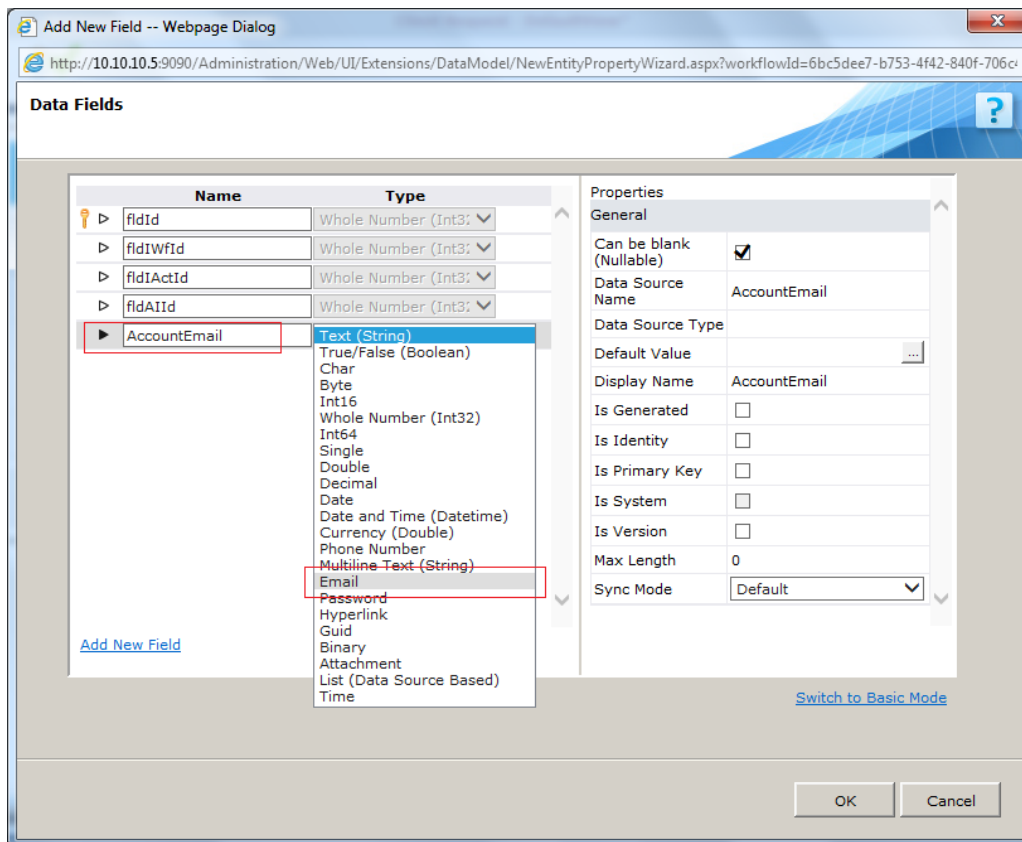
### UX Studio – Automatic Form Generation

Now, you can add fields to your form. For example, click one of the cells, and from the Toolbox, click **Text Box**.



### Add New Field

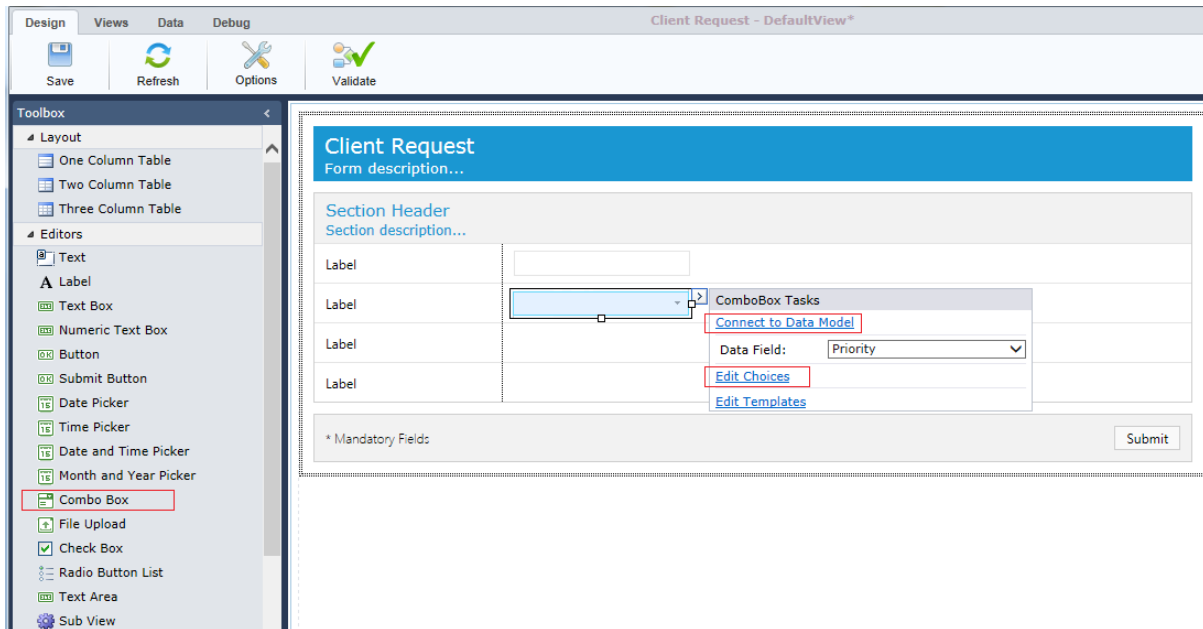
Now you must connect the new field to a Data Source. To do so, open the field's Easy Menu, and select **New Field**. The *Data Fields* window opens, where you can define the field's name and type:



### Define Field Name and Type

## Combo Boxes Made Easy

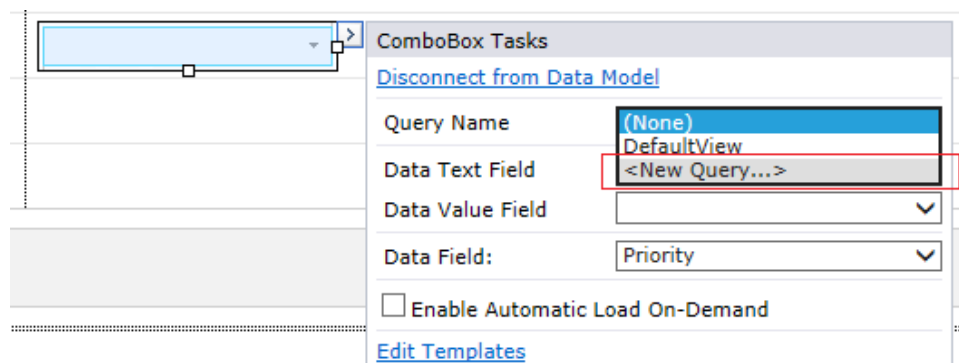
SP5 makes it easy to edit combo box values. First, add a combo box to your form, and connect it to a Data Source (as shown above).



### Combo Box Easy Menu

Now, there are two options for defining the combo box's values:

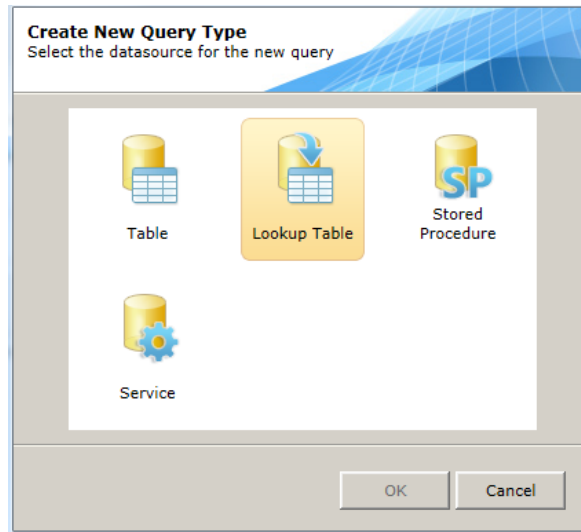
**Option 1 - Connect to Data Model:** click this option to connect the combo box to a Query such as a Lookup Table or Service.



*Note: You can click 'Disconnect from Data Model' in order to define the combo box values manually.*

Click **New Query**, and select the type of Query:

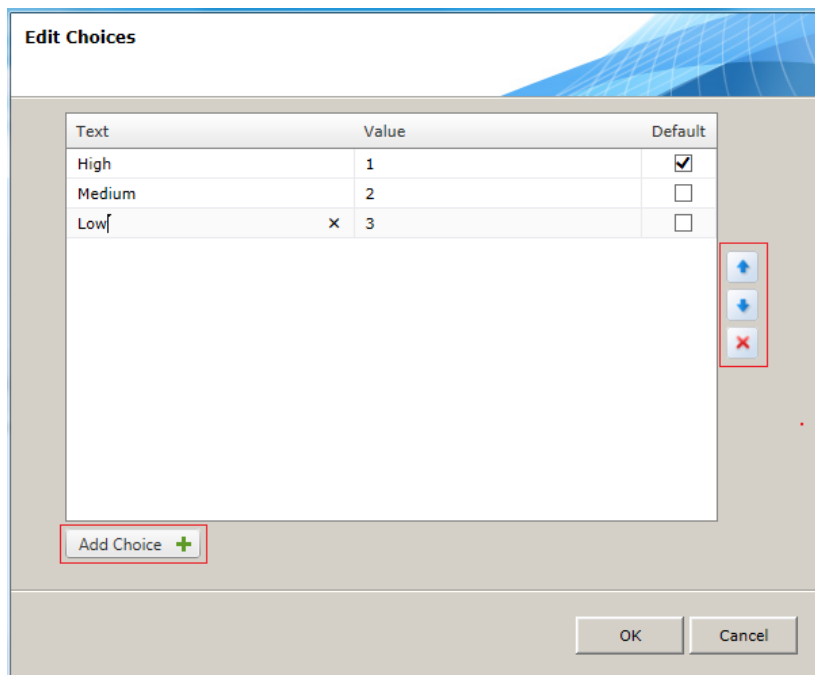




Now define the query as you would normally do in the Data Model wizard.



**Option 2 - Edit Choices:** click this option to manually enter the combo box values.

The *Edit Choices* window opens:



### Edit Choices

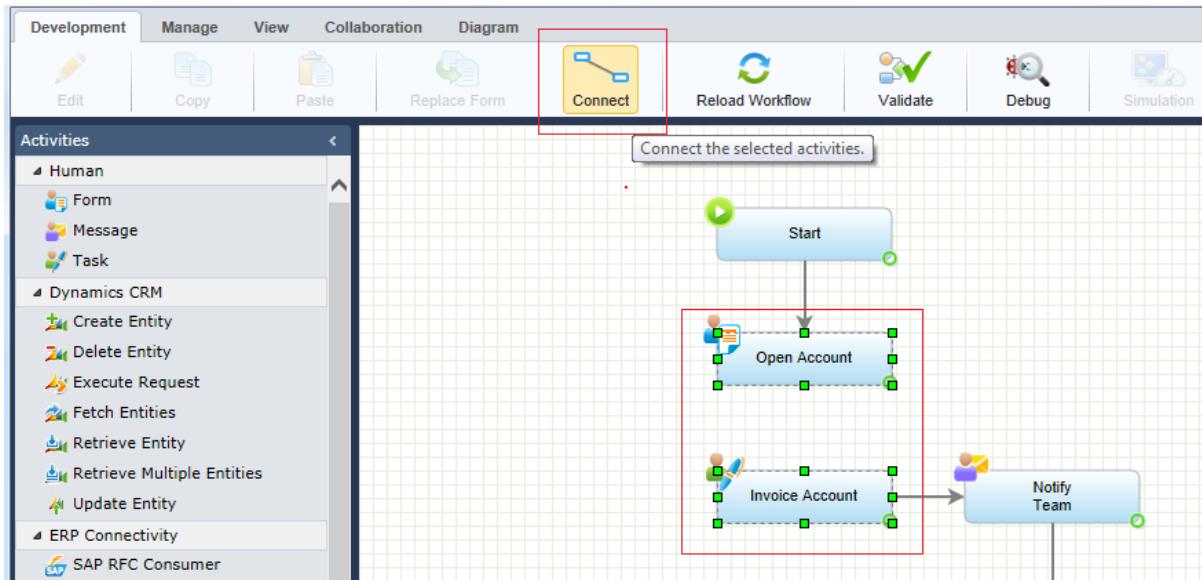
Here you can click **Add Choices** to add new values. You can set one choice as the Default.

Use the  arrows to re-order the choices, and click  to delete a selected choice.

## Enhanced Features

### Connect Activities

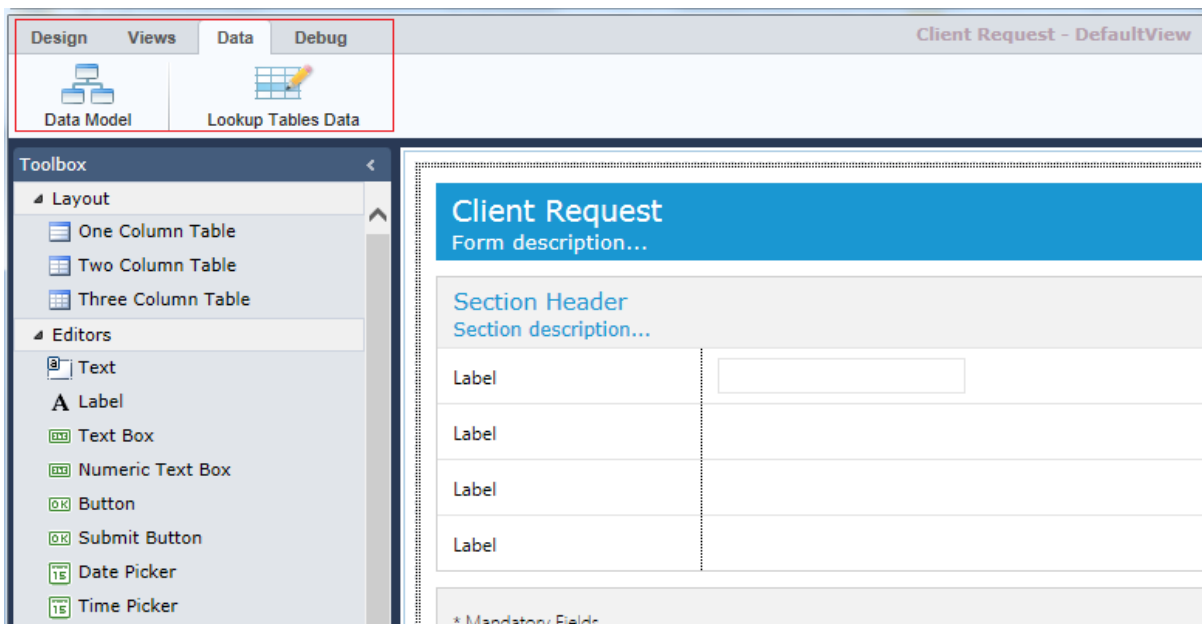
On the Workflow Canvas, when selecting two or more activities, you can now connect them by clicking **Connect** from the top ribbon:



### Connect Activities

### Data Tab in UX Studio

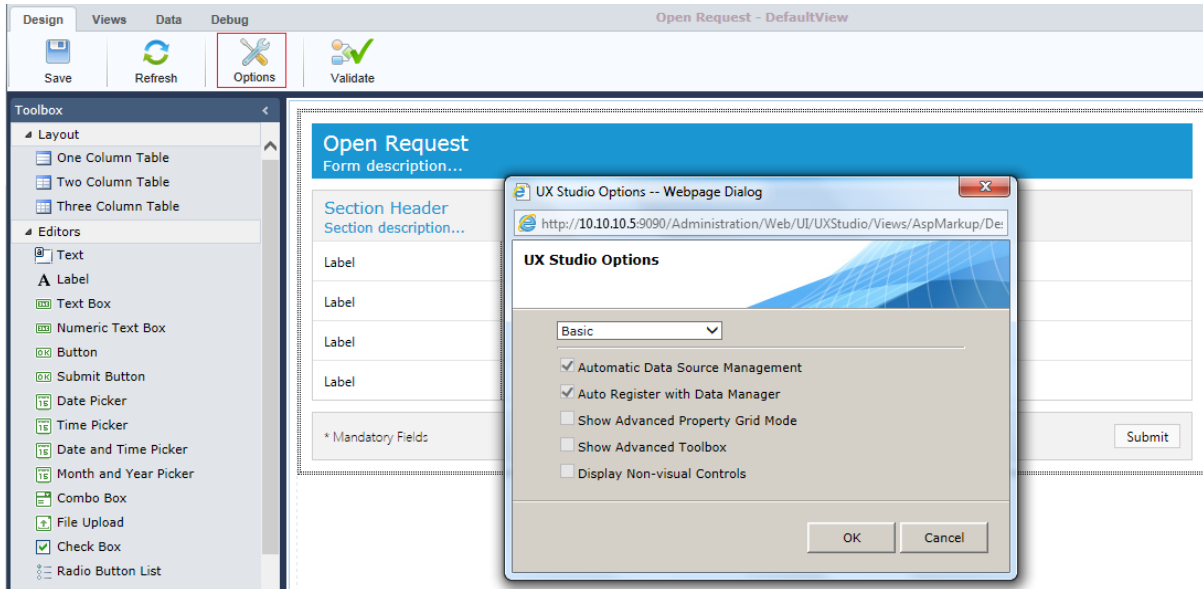
In the UX Studio, there is a new top ribbon tab: **Data**. This tab includes options which were previously in the Design tab:



### Data Tab

## UX Studio Options

In the UX Studio, you now have more control over which basic/advanced options are enabled. Select **Design > Options** to control these options:



### UX Studio Options

From the dropdown menu, you can select:

- Basic: basic options are selected.
- Advanced: advanced options are selected.
- Custom: you can control which options are selected.

The following options are available:

- Automatic Data Source Management: Sequence Kinetics automatically defines and manages data sources for form controls. Data Sources are hidden from the user.
- Auto Register with Data Manager: Sequence Kinetics automatically registers Form and Grid controls with the Data Manager.
- Show Advanced Property Grid: Display advanced properties in the Properties grid on the right.
- Show Advanced Toolbox: Include advanced controls on the Toolbox on the left.
- Display Non-visual Controls: Display non-visual controls on the UX Studio canvas.

## Grid Features

### Aggregation

In SP5, you can perform aggregation functions on grid columns (such as 'Sum of values') and display their results in the grid footer:

PRODUCTID	PRODUCT NAME	UNIT PRICE	IN STOCK	UNITS ON ORDER	REORDER LEVEL	DISCONTINUED				
2	Chang	\$19.00	17	40	25	False				
3	Aniseed Syrup	\$10.00	13	70	25	False				
4	Chef Anton's Cajun Seasoning	\$22.00	53	0	0	False				
5	Chef Anton's Gumbo Mix	\$21.35	0	0	0	True				
6	Grandma's Boysenberry Spread	\$25.00	120	0	25	False				
7	Uncle Bob's Organic Dried Pears	\$30.00	15	0	10	False				
8	Northwoods Cranberry Sauce	\$40.00	6	0	0	False				
9	Mishi Kobe Niku	\$97.00	29	0	0	True				
10	Ikura	\$31.00	31	0	0	False				
11	Queso Cabrales	\$21.00	22	30	30	False				
12	Queso Manchego La Bastera	\$38.00	86	0	0	False				
Count : 77						Avg: \$28.87	Sum : 3119	Max : 100	Min units: 0	8 items discontinued, 69 not

### Grid Aggregation

This is possible by adding Aggregate functions to the Form markup. [See the Grid guide](#) for more details.

### Calculated Column

You can create a column which is the result of a calculation of other grid columns.

For example, a product of the multiplication of two columns:

PRODUCT ID	PRODUCT NAME	UNIT PRICE	UNITS IN STOCK	TOTAL PRICE
1	Chai	18.00	39	702
2	Chang	19.00	17	323
3	Aniseed Syrup	10.00	13	130
4	Chef Anton's Cajun Seasoning	22.00	53	1166
5	Chef Anton's Gumbo Mix	21.35	0	0
6	Grandma's Boysenberry Spread	25.00	120	3000
7	Uncle Bob's Organic Dried Pears	30.00	15	450
8	Northwoods Cranberry Sauce	40.00	6	240
9	Mishi Kobe Niku	97.00	29	2813
10	Ikura	31.00	31	961
Total products: 77		Total price: 2222.71	All units in stock: 3119	Total : 74050.85

Page size: 10 77 items in 8 pages

### Calculated Column

This is possible by adding GridCalculatedColumn function to the Form markup. [See the Grid guide](#) for more details.

### Grid Hierarchy

You can create a hierarchy of grids (nesting grids within grids).

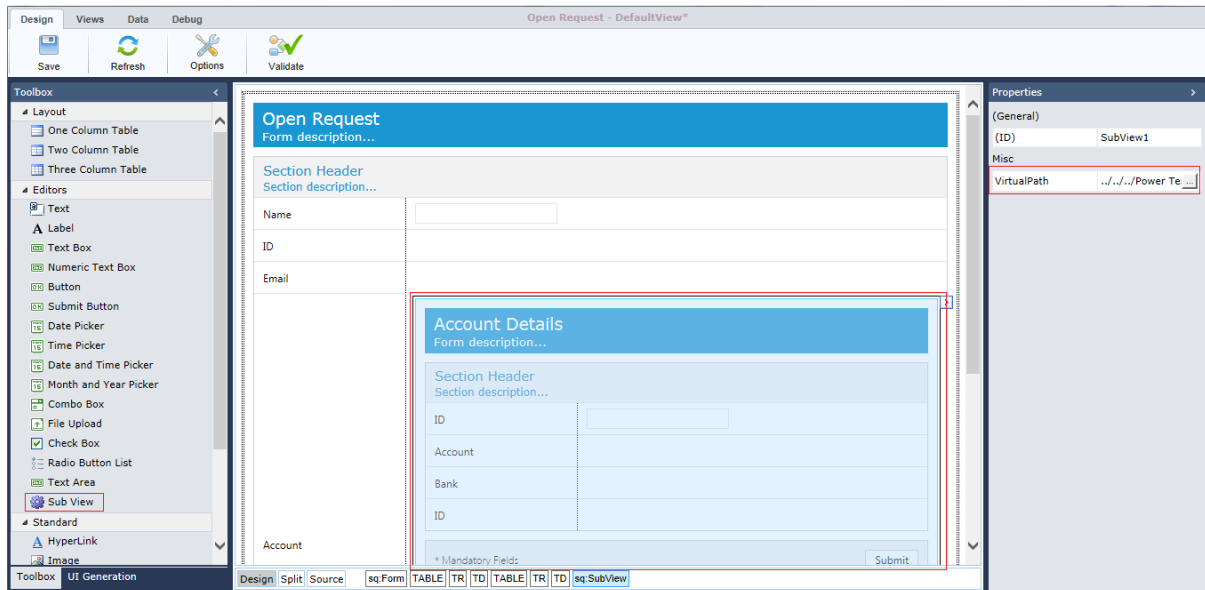
CUSTOMERID	CONTACT NAME	COMPANY ▲																																				
ALFKI	Maria Anders	Alfreds Futterkiste																																				
<table border="1"> <thead> <tr> <th>ORDERID</th> <th>DATE ORDERED ▲</th> <th>FREIGHT</th> </tr> </thead> <tbody> <tr> <td>10643</td> <td>Monday, August 25, 1997</td> <td>29.46</td> </tr> <tr> <td colspan="3"> <table border="1"> <thead> <tr> <th>UNIT PRICE</th> <th>QUANTITY ▼</th> <th>DISCOUNT</th> </tr> </thead> <tbody> <tr> <td>18.00</td> <td>21</td> <td>0.25</td> </tr> <tr> <td>45.60</td> <td>15</td> <td>0.25</td> </tr> <tr> <td>12.00</td> <td>2</td> <td>0.25</td> </tr> </tbody> </table> </td> </tr> <tr> <td>▶ 10692</td> <td>Friday, October 03, 1997</td> <td>61.02</td> </tr> <tr> <td>▶ 10702</td> <td>Monday, October 13, 1997</td> <td>23.94</td> </tr> <tr> <td>▶ 10835</td> <td>Thursday, January 15, 1998</td> <td>69.53</td> </tr> <tr> <td>▶ 10952</td> <td>Monday, March 16, 1998</td> <td>40.42</td> </tr> <tr> <td>▶ 11011</td> <td>Thursday, April 09, 1998</td> <td>1.21</td> </tr> </tbody> </table>			ORDERID	DATE ORDERED ▲	FREIGHT	10643	Monday, August 25, 1997	29.46	<table border="1"> <thead> <tr> <th>UNIT PRICE</th> <th>QUANTITY ▼</th> <th>DISCOUNT</th> </tr> </thead> <tbody> <tr> <td>18.00</td> <td>21</td> <td>0.25</td> </tr> <tr> <td>45.60</td> <td>15</td> <td>0.25</td> </tr> <tr> <td>12.00</td> <td>2</td> <td>0.25</td> </tr> </tbody> </table>			UNIT PRICE	QUANTITY ▼	DISCOUNT	18.00	21	0.25	45.60	15	0.25	12.00	2	0.25	▶ 10692	Friday, October 03, 1997	61.02	▶ 10702	Monday, October 13, 1997	23.94	▶ 10835	Thursday, January 15, 1998	69.53	▶ 10952	Monday, March 16, 1998	40.42	▶ 11011	Thursday, April 09, 1998	1.21
ORDERID	DATE ORDERED ▲	FREIGHT																																				
10643	Monday, August 25, 1997	29.46																																				
<table border="1"> <thead> <tr> <th>UNIT PRICE</th> <th>QUANTITY ▼</th> <th>DISCOUNT</th> </tr> </thead> <tbody> <tr> <td>18.00</td> <td>21</td> <td>0.25</td> </tr> <tr> <td>45.60</td> <td>15</td> <td>0.25</td> </tr> <tr> <td>12.00</td> <td>2</td> <td>0.25</td> </tr> </tbody> </table>			UNIT PRICE	QUANTITY ▼	DISCOUNT	18.00	21	0.25	45.60	15	0.25	12.00	2	0.25																								
UNIT PRICE	QUANTITY ▼	DISCOUNT																																				
18.00	21	0.25																																				
45.60	15	0.25																																				
12.00	2	0.25																																				
▶ 10692	Friday, October 03, 1997	61.02																																				
▶ 10702	Monday, October 13, 1997	23.94																																				
▶ 10835	Thursday, January 15, 1998	69.53																																				
▶ 10952	Monday, March 16, 1998	40.42																																				
▶ 11011	Thursday, April 09, 1998	1.21																																				
▶ ANATR	Ana Trujillo	Ana Trujillo Emparedados y helados																																				
▶ ANTON	Antonio Moreno	Antonio Moreno Taquería																																				
▶ AROUT	Thomas Hardy	Around the Horn																																				
▶ BERGS	Christina Berglund	Berglunds snabbköp																																				
▶ BLAUS	Hanna Moos	Blauer See Delikatessen																																				
▶ BLONP	Frédérique Citeaux	Blondesddsl père et fils																																				

### Grid Hierarchy

This is possible using the ParentTableRelation property in the Form markup. [See the Grid guide](#) for more details.

## Sub Views Displayed in Forms

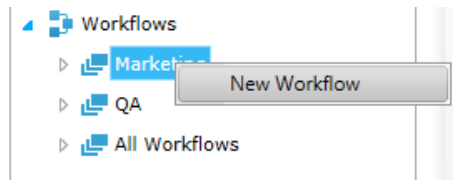
When you add a Sub View to a Form, the Sub View is displayed within the parent Form:



**Sub View is Displayed**

## Adding Workflows to Categories

Now, you can add a new workflow to an existing category, by right-clicking that Category and selecting **New Workflow**:



**Add Workflow to Category**

The workflow is created and added to that category.

## Breaking Changes

1. **Important:** The mime-type of files is checked and blocked in the server code.

The following file types are permitted:

extension="bmp" contentType="image/bmp"

extension="csv" contentType="application/octet-stream"

extension="doc" contentType="application/msword"

extension="docx" contentType="application/vnd.ms-word.document.12"

extension="gif" contentType="image/gif"

extension="jpg" contentType="image/jpeg"

extension="ods" contentType="application/oleobject"

extension="odt" contentType="application/vnd.oasis.opendocument.text"

extension="pdf" contentType="application/pdf"

extension="ppt" contentType="application/vnd.ms-powerpoint"

extension="pptx" contentType="application/vnd.ms-powerpoint.presentation.12"

extension="rtf" contentType="application/rtf"

extension="txt" contentType="text/plain"

extension="xls" contentType="application/vnd.ms-excel"

extension="xlsx" contentType="application/vnd.ms-excel.12"

extension="xps" contentType="application/vnd.ms-xpsdocument"

extension="zip" contentType="application/x-zip-compressed"

If your application uses different file types please add the relevant extension to this file:

*C:\Program Files\PNMsoft\Shared Resources\Configuration\MimeTypes.config*

2. SequenceCss.css will only be available (unless added manually) when old forms are loaded.

3. The doc type for new forms will be "<!doctype html>" and in old forms "<!DOCTYPE HTML PUBLIC ""-//W3C//DTD HTML 4.01 Transitional//EN"" "http://www.w3.org/TR/html4/loose.dtd"">"

4. Old forms will run in quirks mode in Flowtime and standard mode in the Debugger.

5. Comments and Questions values are now encoded. Therefore any HTML tags, including scripts, will be displayed as is and will not be executed.

## **Known Issues**

See known issues online at:

<http://members.pnmsoft.com/Downloads/Lists/Known%20Issues/AllItems.aspx>