

# Sequence Kinetics SP6

## Release Notes

Issue Date: 1<sup>st</sup> January 2014

© 2013 PNMsoft All Rights Reserved

No part of this document may be reproduced in any form by any means without the prior authorisation of PNMsoft.

PNMsoft UK 38 Clarendon Road Watford Herts W17 1JJ

Tel: +44(0)192 381 3420 • Email: [info@pnmsoft.com](mailto:info@pnmsoft.com) • Website: [www.pnmsoft.com](http://www.pnmsoft.com)



**Microsoft** Partner

Gold Independent Software Vendor (ISV)

---

## Contents

<b>INTRODUCTION .....</b>	<b>4</b>
<b>INSTALLATION .....</b>	<b>4</b>
NEW SEQUENCE 7.6 INSTALLATION.....	4
UPGRADING FROM SEQUENCE v7.0 OR LATER.....	4
UPGRADING FROM VERSIONS PRIOR TO v7.0.....	4
<b>NEW FEATURES .....</b>	<b>5</b>
CRM 2013 COMPATIBILITY .....	5
EASILY ADD A REQUIRED VALIDATOR ON A CONTROL .....	6
CUSTOMISING THE RECIPIENTS PICKER LIST .....	6
SECURITY: ATTACHMENT LINK IS SEALED AS PRIVATE BY DEFAULT .....	9
SECURITY: PREVENTION OF CROSS-SITE REQUEST FORGERY ATTACK .....	9
INHERITING WORKFLOW PERMISSIONS .....	10
CLOSE ALL ACTION ITEMS WHEN A TASK IS SUBMITTED .....	11
<b>ENHANCED FEATURES .....</b>	<b>11</b>
IE 11 COMPATIBILITY .....	11
DUE DATE CALCULATION.....	11
ALLOW FLOWTIME WEB PART USE OUTSIDE SHAREPOINT .....	12
DISABLED CONNECTION DISPLAY.....	13
CHANGED FLOWTIME CHARTS TECHNOLOGY .....	13
PERFORMANCE.....	13
SECURITY – REMOVED ALL CLR FROM SEQUENCE DATABASE.....	13
<b>BREAKING CHANGES.....</b>	<b>14</b>
<b>KNOWN ISSUES .....</b>	<b>15</b>
<b>RESOLVED CASES.....</b>	<b>15</b>
<b>RESOLVED ISSUES .....</b>	<b>15</b>
<b>ADDRESSED CRS .....</b>	<b>15</b>

## Introduction

Sequence Kinetics SP6 (SEQUENCE v7.6) is an official product release incorporating new features and fixes. SP6 introduces compatibility with Dynamics CRM 2013, IE 11 and many other new features and security enhancements.

For a complete list of Sequence Kinetics's major features, [click here](#). This document details the features added in the latest update, SP6. Sequence Kinetics SP6 was approved for release by PNMsoft QA on Dec 31<sup>th</sup>, 2013.

## Installation

You can download the installation files from the [Download Centre](#).

SEQUENCE 7.6 installation requires Windows Server 2008 SP2 or later, and a 64-bit processor with 4 cores.

### New SEQUENCE 7.6 Installation

1. Unzip the file `7.6.0.0Installation/SequenceKinetics7.6_Setup_x64.zip`.
2. Run `7.6.0_Setup.exe` (it is in the zip file).
3. Follow the instructions in the [SEQUENCE 7.x Installation Guide](#) in the [Knowledge Centre](#).

### Upgrading from SEQUENCE v7.0 or later

1. Verify that version 7.0 or later is installed on your server.
2. Backup the configuration files and your database.
3. Free up system resources:
  - i. Use the IISReset command-line utility to reset the IIS.
  - ii. Stop the Windows Service and the Active Directory Service.
4. Download and Unzip the file `7.6.0.0Installation/SequenceKinetics7.6_Setup_x64.zip`
5. Run `7.6.0_Setup.exe` (it is in the zip file).
6. Run IISReset.

*Note: If you are using a VPC, please consider backing it up before the upgrade.*

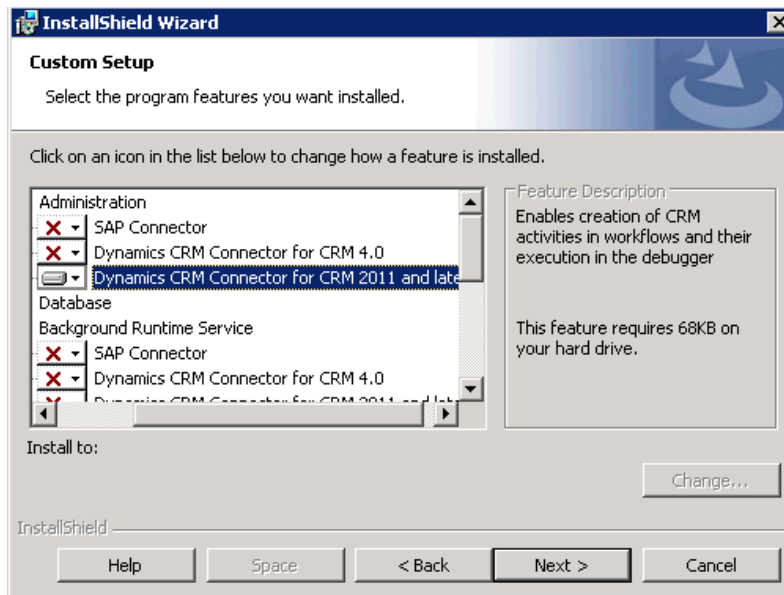
### Upgrading from Versions Prior to v7.0

A direct upgrade to version 7.6 has not been tested and may cause server instability. Therefore, please update/upgrade your SEQUENCE application to version 7.4 using the upgrade file in `7.4.0.0 Installation/SequenceKinetics7.4_Setup_x64.zip` and then upgrade to version 7.6 as detailed in Upgrading from SEQUENCE v7.0 or later above. Versions prior to 6.4.3 must be upgraded to 6.4.4 prior to this step.

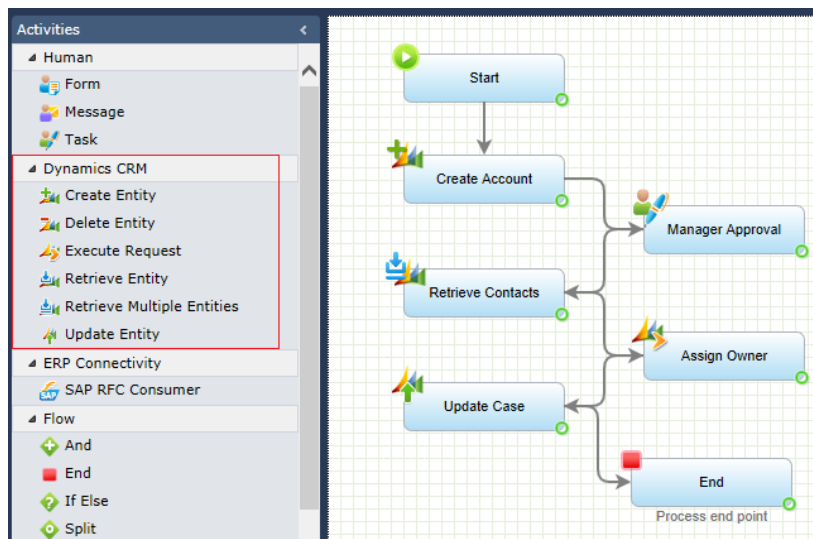
## New Features

### CRM 2013 Compatibility

SP6 includes new set of CRM activities that are compatible with Dynamics CRM 2011 and Dynamics CRM 2013. When you install Sequence Kinetics, you can select which CRM version you require (CRM 4.0 or CRM 2011/2013). The activities are then installed accordingly.



Dynamics CRM Connector for CRM 2011/2013



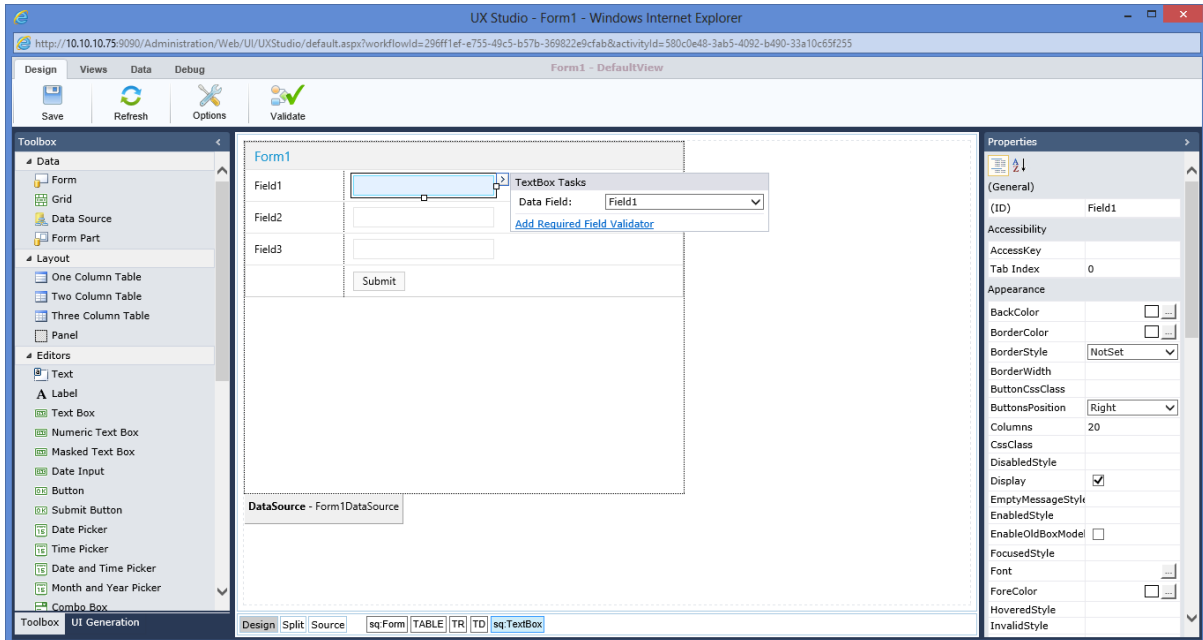
CRM Activities

For more information on each CRM activity, [click here](#).

**Note:** CRM Activities are part of PNMSOFT SCE (Sequence CRM Edition) which enables you to fully integrate intelligent workflows with Dynamics CRM. For more information on PNMSOFT SCE and to read the full user guide [click here](#). To get PNMSOFT SCE, consult your PNMSOFT Account Manager.

## Easily Add a Required Validator on a Control

SP6 makes it easy to set a field as required. To do so, from the easy menu click the **Add Required Field Validator** link. This adds a red asterisk beside the field. You can change the validation text as required by clicking the asterisk and editing its properties.



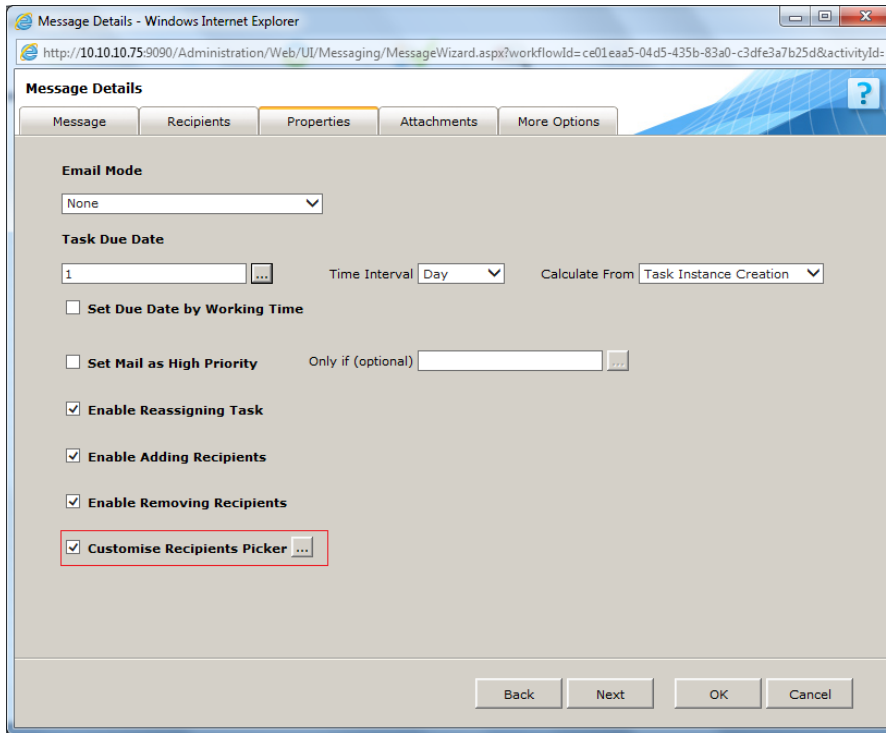
### Add Required Field Validator

## Customising the Recipients Picker List

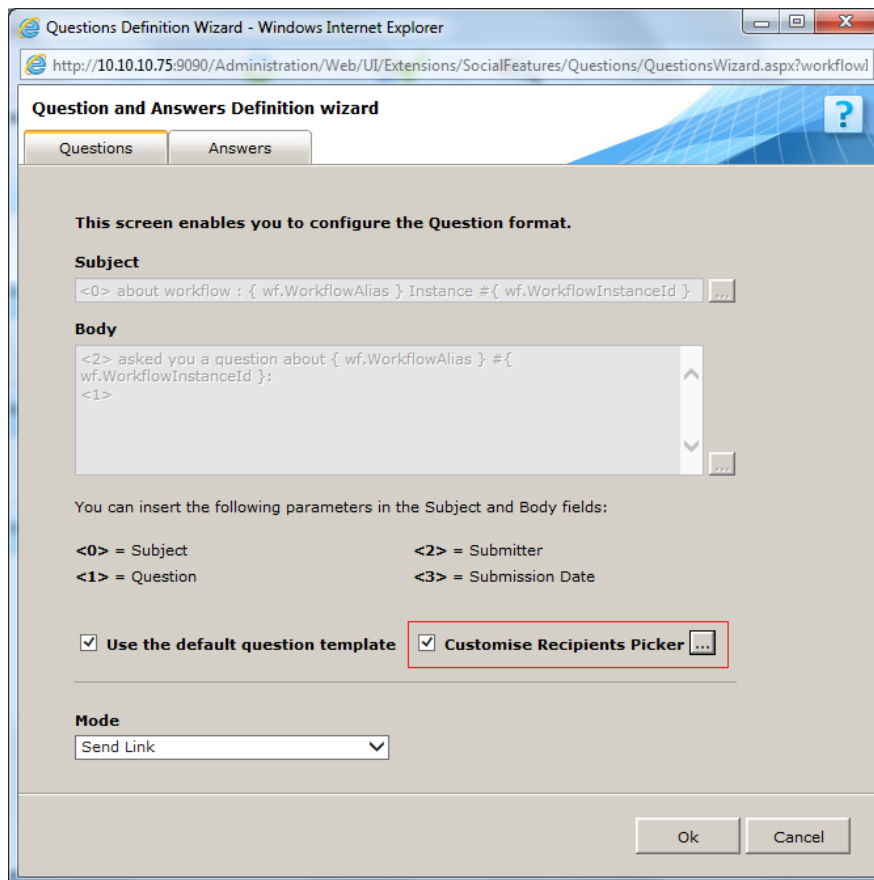
In SP6, you can control the lists that appear for end users in the Recipients Picker.

The Recipients Picker is displayed in the Flowtime when end users ask a question, send a message or re-assign a task.

To customise the Recipients Picker for dynamic message assignment, check the **Customise Recipients Picker** checkbox. (You can do the same in the Questions and Answers wizard.)

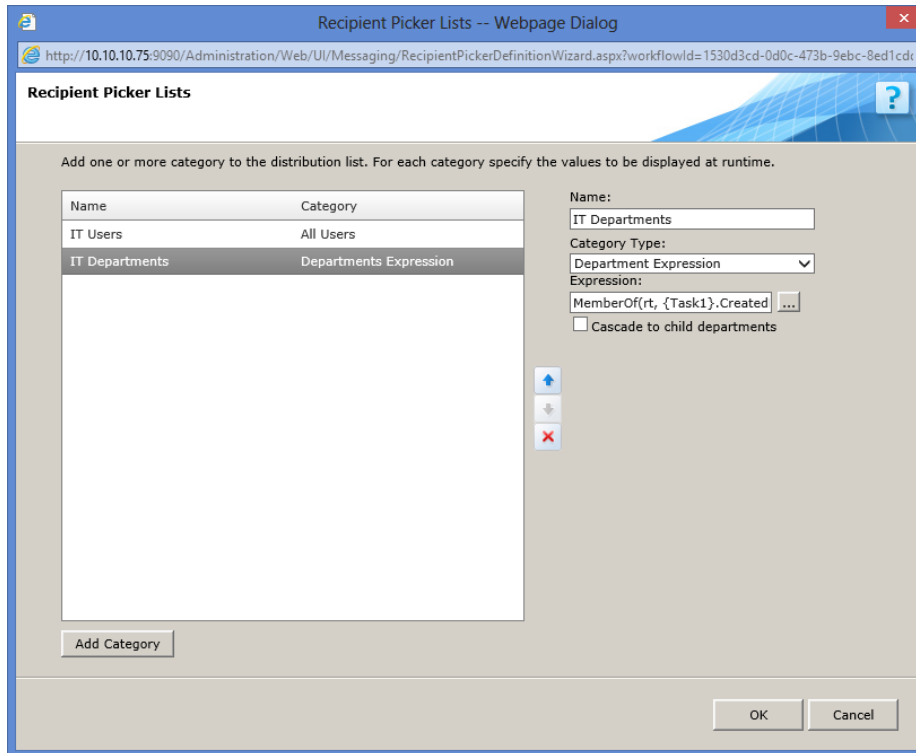


**Message Wizard**



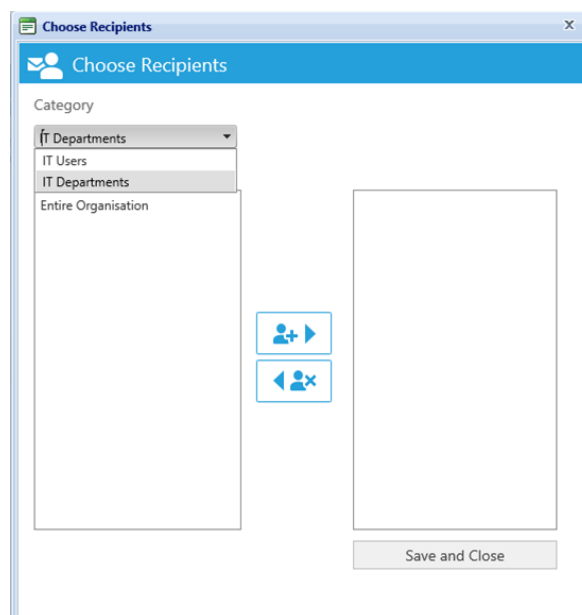
**Questions and Answers Wizard**

Click . The Recipients Picker List editor appears:



**Recipients Picker Lists Editor**

You can change the existing categories or create your own categories. For each category you define its name and type. This is how the Recipient Picker appears in Flowtime:



**Recipients Picker in Flowtime**

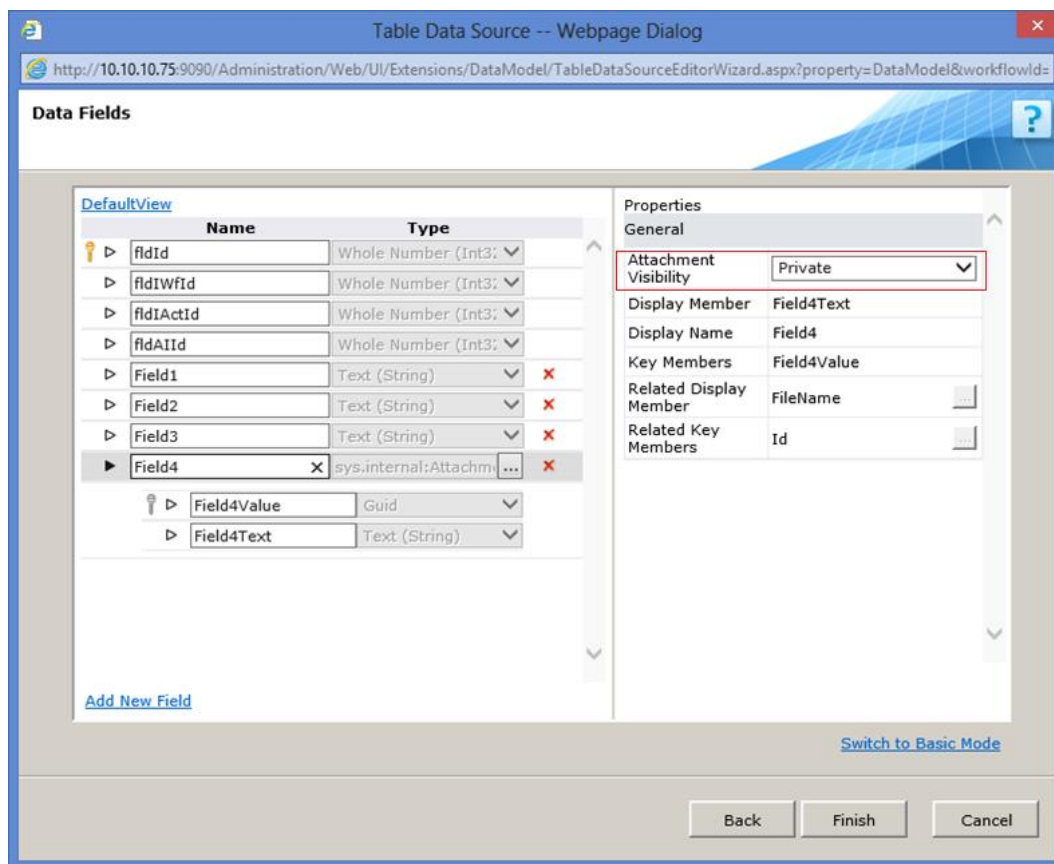
For more information about this feature, [click here](#).



## Security: Attachment Link is Sealed as Private by Default

When you add an attachment field to your data model, you will notice a new option on the property box (advanced mode only): **Attachment Visibility**. This property is set to **Private** by default. When the user opens a document in a workflow form or task, the link to open the document is hashed and valid for 30 min. To allow public access to the file, change this property to **Public**.

*Note: All the attachment fields that were created prior to SP6 are set to Public. You can seal them by changing their property to Private. The Private option is not available for Sequence 6 form activities.*



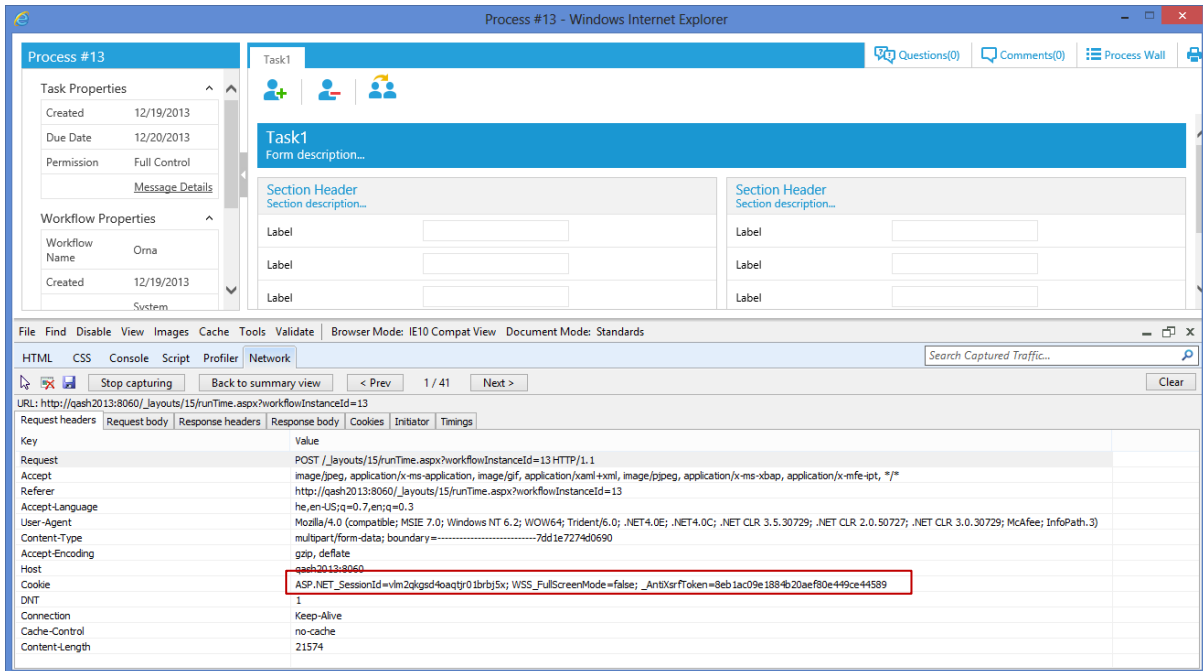
### Attachment Visibility

## Security: Prevention of Cross-Site Request Forgery Attack

CSRF is an attack which forces an end user to execute unwanted actions on a web application in which he/she is currently authenticated.

SP6 includes a unique token to the Runtime.aspx post which closes this vulnerability.

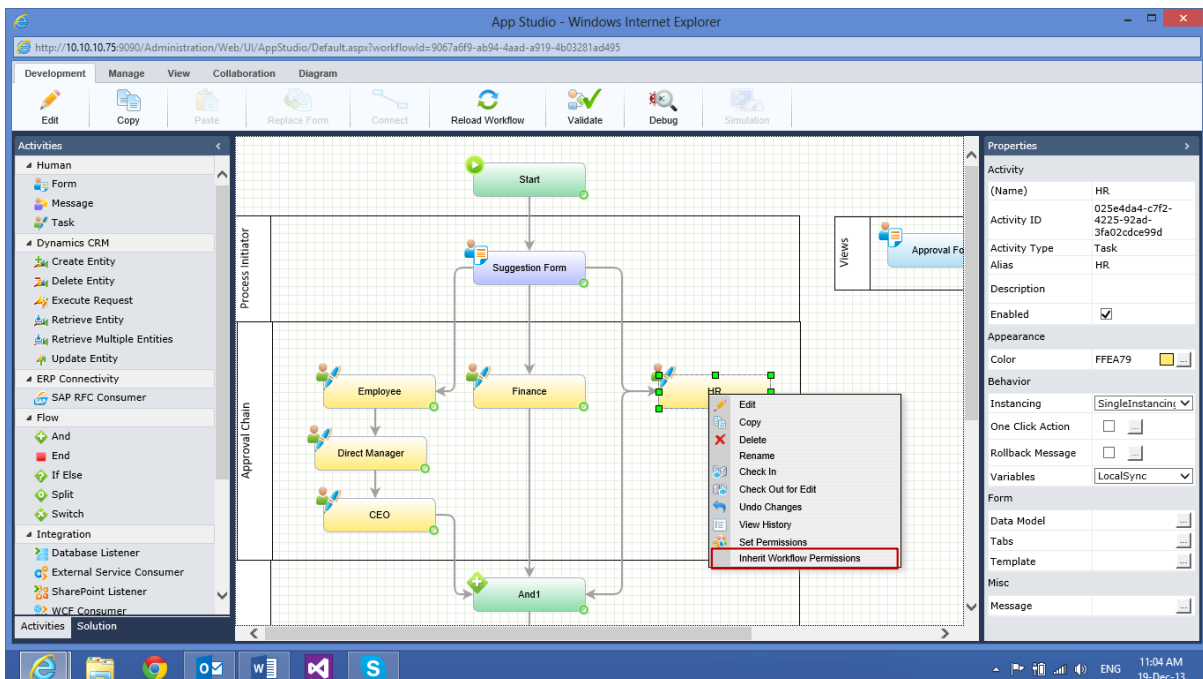
The same mechanism has also been added to relevant administration pages such as the Add Employee page.



**Unique Token**

**Inheriting Workflow Permissions**

When a new activity is added to the Workflow Canvas you can easily apply permissions to it by clicking the **Inherit Workflow Permissions** option from the activity context menu.



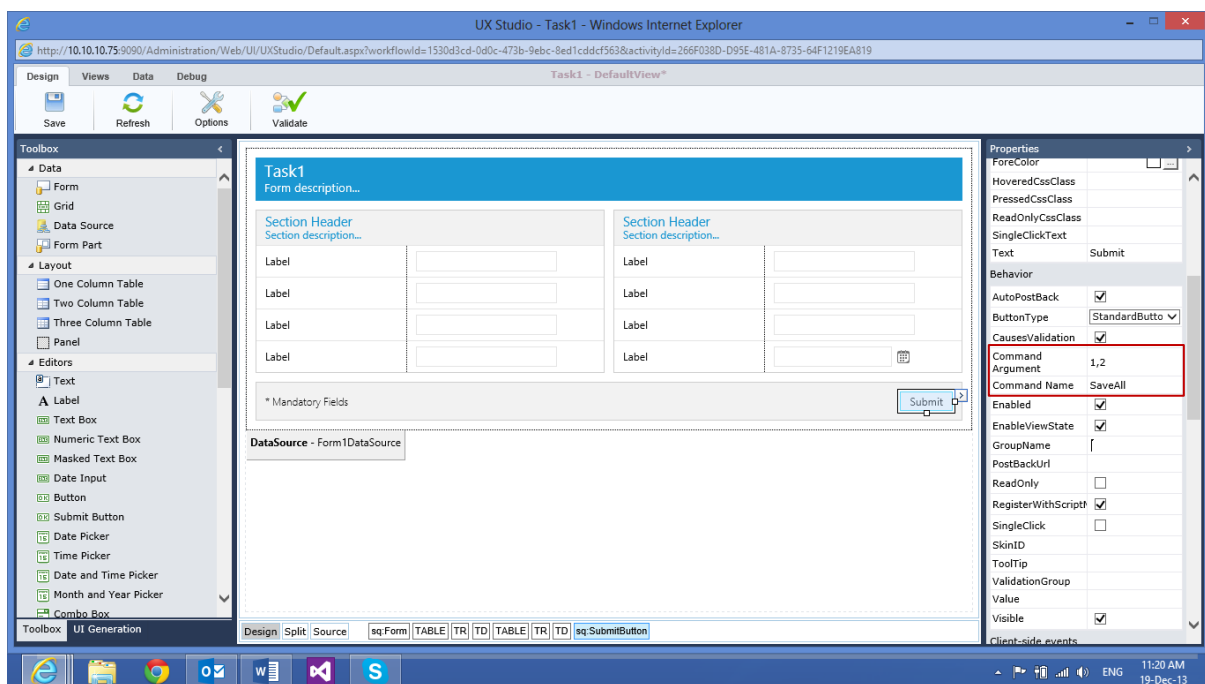
**Inherit Workflow Permissions**

## Close All Action Items when a Task is Submitted

When a task is submitted, the current action item is closed.

To support business scenarios where you need to close all the action items for this task when the first user submits it, SP6 includes a command argument which can be used in the submit button properties.

To set the action items to be closed when the first user submits the task, set the command Name to Save or Save All, and the Command Argument to: 1,2



### Set Action Items to Closed

## Enhanced Features

### IE 11 Compatibility

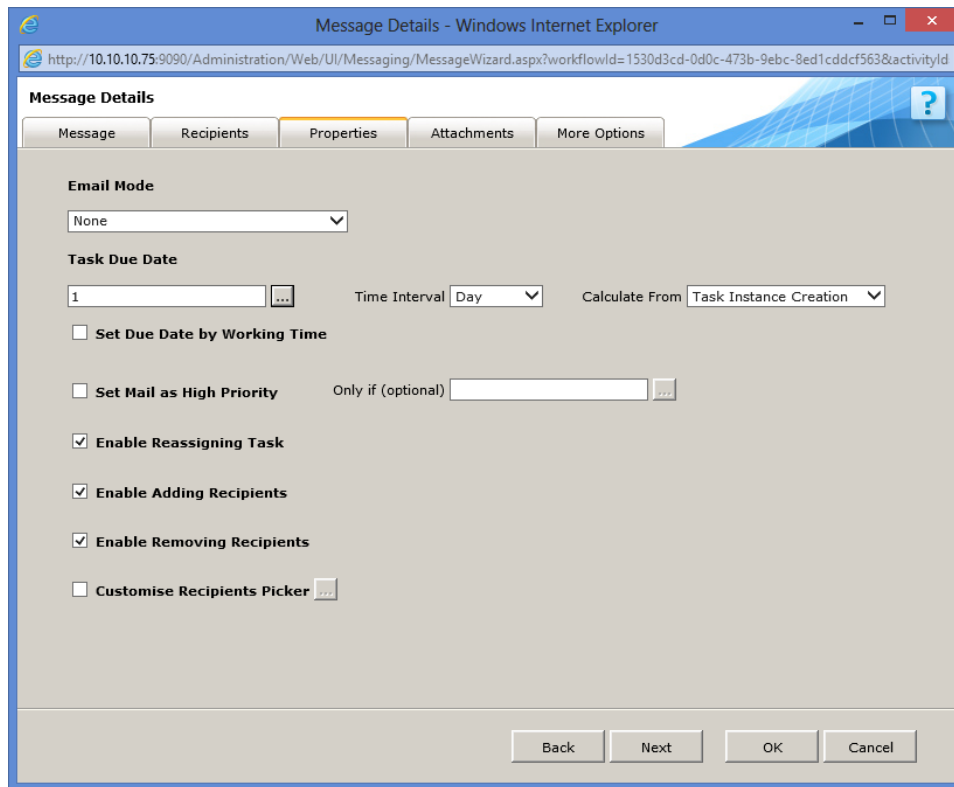
Sequence Flowtime and Administration are compatible with IE 11.

The Workflow Designer component was upgraded to the latest version available.

### Due Date Calculation

There are now two options to calculate a Task's due date:

- Option 1: by the Task Instance Creation, which means that the due date is relative to the time the user received the task.
- Option 2: by the Activity Instance Creation, which means the due date is fixed even if the task was fetched or a recipient was added.



Tasks Due Date Calculation

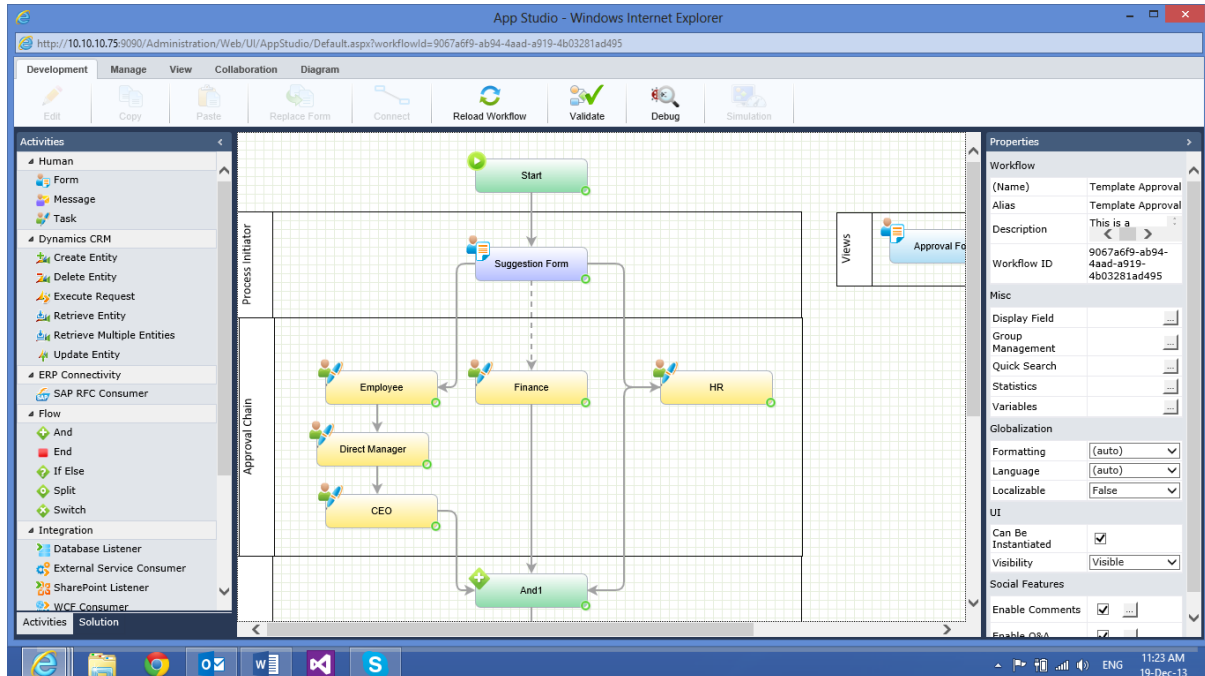
## Allow Flowtime Web Part Use Outside SharePoint

Sequence Flowtime grids are now available outside of SharePoint, and you can host them in your custom web application.

The corresponding WCF is available to be consumed when working in a non-SharePoint environment.

## Disabled Connection Display

The Display of a disabled connection has changed to a dashed line. The dashed line is visible in the Workflow Canvas, Workflow Debugger and in the Workflow Status (in Flowtime).



Disabled Connection Display

## Changed Flowtime Charts Technology

All the Flowtime charts now work in JS mode and support tablets, smartphones and desktop browsers.

## Performance

In SP6, many of the Sequence's database indices have been reconfigured and line-of-business stored procedures have been optimised. This results in very significant performance improvements.

## Security – Removed all CLR from Sequence Database

All CLR has been removed from the Sequence database, and was replaced with alternative code.

## Breaking Changes

1. New installations of Sequence will not include any CLR functions. If you import a workflow that relies on CLR functions, you will have to edit it in the source environment prior to import.

The following Functions were removed:

- CLRSplit
- GetEmpRolesCLR
- ConvertAnyStringToGuid
- ReplaceRegEx
- XMLNodeExt
- Concatenate

The following Stored Procedures were removed:

- SPFixImportedWorkflowSubForm
- SPUpdateXMLData

2. Services dll was changed to Pnmsoft.Sequence.Flowtime.Services.dll. Therefore, if you made configuration changes to Flowtime columns, menus, or commands in a config file, you will need to modify the config file with the reference to the new dll.

The config files are in:

*C:\Program Files\PNMsoft\Share Resources\Components\Flowtime\Config*

Also, in the config files, the structure of the CustomColumn element was changed:

From:

```
<CustomColumn  
    Name="Edit" />
```

To:

```
<CustomColumn  
    Name="Edit"  
    Width="25px"  
    Template="&lt;span class='k-grid-edit-delegation-column' /&gt;" />
```

3. You can now add multiple data fields as primary keys.
4. Runtime.aspx which is hosted in a sub site is no longer redirecting to the root site.

## Known Issues

See known issues online at:

<http://members.pnmssoft.com/Downloads/Lists/Known%20Issues/AllItems.aspx>

## Resolved Cases

Ticket #	Description
10447	Apply database optimisation recommendation.
11772	Due date is calculated relative to action item created date.
11825	New Delegation web part failed to load in SP2010.
11881	Error when editing/adding/deleting rows in a UTCMB after adding the Boolean field.
12157	Message display HTML mark-up tag in Process <sup>TO GO</sup> .
12218	View Trace display 403 when permission are granted using process role
12647	Runtime.aspx collapse button is not displayed when using Hebrew interface.
12916	Issues while calculating task due date using expression

## Resolved issues

- Remove validation alert when form mark-up contains <% sq: ... %>
- Workflow variables without source are set to NULL value when "AllSync" mode is used.
- Web Service Listener activity with space in the service name when it is consumed using Web Service Consumer activity: the discovery information is not persisted.
- ' character becomes \ in workflow comment.
- Quick search is not working when there is space in the source activity name.
- '- is not allowed in message header property.

## Addressed CRs

#1285, #3919, #4713, #4809, #4990, #6080, #6174, #6355