

Sequence Kinetics SP8

Release Notes

Issue Date: 20th Nov. 2014

© 2014 PNMsoft All Rights Reserved

No part of this document may be reproduced in any form by any means without the prior authorisation of PNMsoft.

PNMsoft UK 38 Clarendon Road Watford Herts W17 1JJ

Tel: +44(0)192 381 3420 • Email: info@pnmsoft.com • Website: www.pnmsoft.com



Microsoft Partner

Gold Independent Software Vendor (ISV)

Contents

INTRODUCTION	4
INSTALLATION	4
NEW SEQUENCE 7.8 INSTALLATION	4
UPGRADING FROM SEQUENCE V7.0 OR LATER	4
UPGRADING FROM VERSIONS PRIOR TO V7.0	5
NEW FEATURES	6
REMOTE WEB PARTS	6
REST ACTIVITY AND REST SERVICE QUERY	6
SAP SERVICE QUERY	7
AUTO FETCH QUEUE	8
SEQUENCE TEMPLATES	9
ENHANCED FEATURES	9
HANDLE RUNNING PROCESSES – UNASSIGNED TASKS	9
SERVICE QUERY PARAMETER MANAGEMENT	10
VERSION MANAGEMENT	10
INSTALLATION	11
FLOW ACTIVITY PREVIEW	11
SECURITY ENHANCEMENTS	12
CHANGED THE PATH OF PROXY WRITING	13
SEQUENCE ANALYTICS FILTERS	13
WEB.CONFIG MODIFICATIONS	14
FLOWTIME WEB.CONFIG – SHAREPOINT 2013	14
FLOWTIME WEB.CONFIG – SHAREPOINT 2010	14
FLOWTIME WEB.CONFIG – SHAREPOINT 2007	15
WEB.CONFIG – ADMINISTRATION	15
BREAKING CHANGES	16
KNOWN ISSUES	17
RESOLVED TICKETS	17
RESOLVED CRS	17

Introduction

Sequence Kinetics SP8 (Sequence v7.8) is an official product release incorporating new features and fixes. SP8 introduces powerful and practical new features such as Remote Web Parts, REST and SAP services, Sequence Templates and more.

For a complete list of Sequence Kinetics's major features, [click here](#). This document details the features added in the latest update, SP8. Sequence Kinetics SP8 was approved for release by PNMsoft QA on November 20th, 2014.

Installation

You can download the installation files from the [Download Centre](#). Sequence 7.8 installation requires Windows Server 2008 SP2 or later, and a 64-bit processor with 4 cores.

New Sequence 7.8 Installation

1. Unzip the file *7.8.0.0Installation/SequenceKinetics7.8_Setup.zip*.
2. Run *7.8.0_Setup.exe* (it is in the zip file).
3. Follow the instructions in the [Sequence 7.x Installation Guide](#) in the [Knowledge Centre](#).

Upgrading from Sequence v7.0 or later

1. Verify that the accounts have the required permissions:
 - Refer to the "Required Accounts" section in the Sequence installation guide.
 - Use the "installation account" to run the upgrade.
 - The database account should have sys_admin permissions for the duration of the upgrade.
2. Verify that version 7.0 or later is installed on your server.
 - In the Administration site, check the Assembly/Database version (under "Installation Details", bottom-right section).
3. Backup the configuration files (product and web site folders) and your database.
4. Free up system resources:
 - i. Use the IISReset command-line utility to reset the IIS.
 - ii. Stop the Windows Services: Active Directory Synchronization Service and Background Runtime Service.
5. **If you are upgrading from Sequence 7.7.2 or later, run this script before the upgrade:**

*Note: To verify the database version, run this query:
select fldVersion from tblCompanyParam*

```
IF EXISTS  
(
```

```
SELECT TOP 1 [object_id]
FROM sys.columns
WHERE name = N'fldDefault'
AND object_id =
OBJECT_ID(N'[dbo].[tblAnalyticsSharepointConnections]', 'U')
AND default_object_id =
OBJECT_ID(N'[dbo].[DF_tblAnalyticsSharepointConnections_fldDefault]', 'D')
)
ALTER TABLE [dbo].[tblAnalyticsSharepointConnections]
DROP CONSTRAINT [DF_tblAnalyticsSharepointConnections_fldDefault]
```

6. Download and unzip the file *7.8.0.0Installation/SequenceKinetics7.8_Setup_x64.zip*
7. Select *7.8.0_Setup.exe* (it is in the zip file), right-click it and select **Run as Administrator**.

Note: Normally, the selections and values entered during the installation will be the default values in the upgrade wizard. Please review them, correct if necessary, and click Next. For more details about these options, refer to the Installation guide.

Note: If you have Sequence Templates installed on your existing environment, do not select to install them in the Installation Wizard, as this will cause the installation to fail. If needed, you can manually install more templates after the installation.

8. Run IISRESET.

Note: If you are using a VPC, please consider backing it up before the upgrade.

Upgrading from Versions Prior to v7.0

A direct upgrade to version 7.8 has not been tested and may cause server instability. Therefore, please update/upgrade your Sequence application to version 7.4 using the upgrade file in *7.4.0.0 Installation/SequenceKinetics7.4_Setup_x64.zip* and then upgrade to version 7.8 as detailed in [Upgrading from Sequence v7.0 or later](#) above. Versions prior to 6.4.3 must be upgraded to 6.4.4 prior to this step.

Note: Sequence does not support removing specific features (such as Process^{TO GO}, CRM connector, etc.) which have already been installed.

New Features

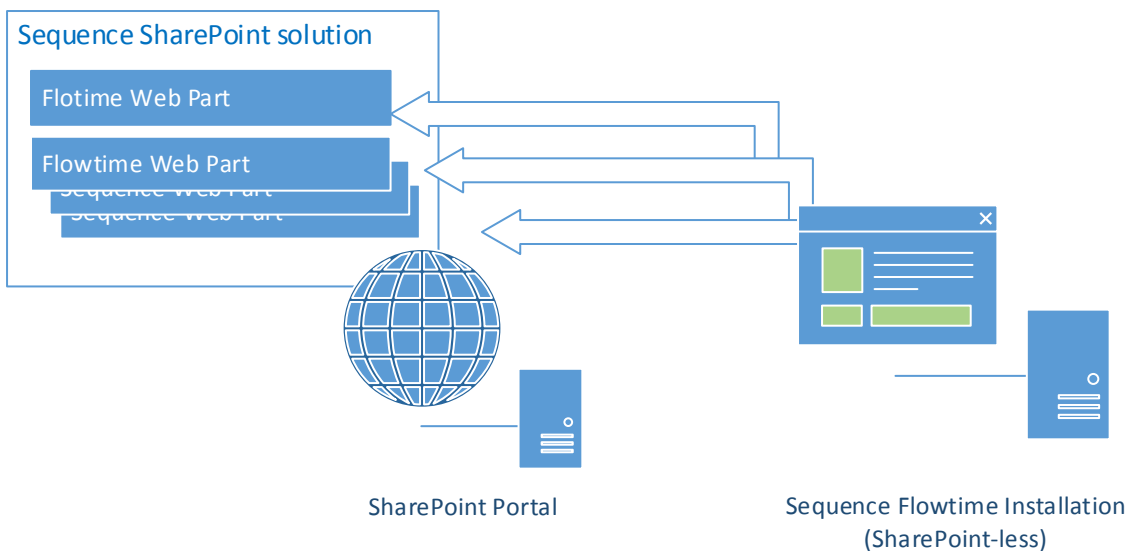
Remote Web Parts

Sequence Kinetics's runtime environment, Flowtime, is by default installed on a server with SharePoint on it. By default, Flowtime runs within that SharePoint environment, and its web parts and data are exposed there.

However, you if you are not able to install software on your SharePoint farm, or if you have many web front servers that need to display Sequence data, but you wish to avoid repeated installation of Sequence on each of them, you can use the Remote Web Parts feature.

This feature enables you to display Flowtime data on a server which has SharePoint installed, but not Sequence.

The topology is as follows:



Remote Web Parts Topology

See [this guide](#) for details on how to install and use Remote Web Parts.

REST Activity and REST Service Query

Sequence Kinetics v7.8 enables you to define a RESTful Service Consumer, which can be used as an Activity or as a Service Query.

The new activity and service enable easy messaging integration with systems that expose their services as RESTful.

See [this guide](#) for a detailed explanation of how to define the new activity in your process.

REST Service Consumer Details

Properties Operations

Base URL
The REST Service Endpoint URL
http://10.10.10.75/restservicetest/Service1.svc

Use Credentials
Credential Type: Application Credential Name: []

Apply Custom Configuration []

Consumer Name
The Service Consumer name
RestServiceConsumer1

Schemas
The Xml Schemas used by the service definition

- http://schemas.microsoft.com/2003/10/Serialization/ [] X
- http://schemas.dome/2014/09/ [] X
- http://schemas.microsoft.com/2003/10/Serialization/Arrays [] X
- http://schemas.dome/2014/7 [] X

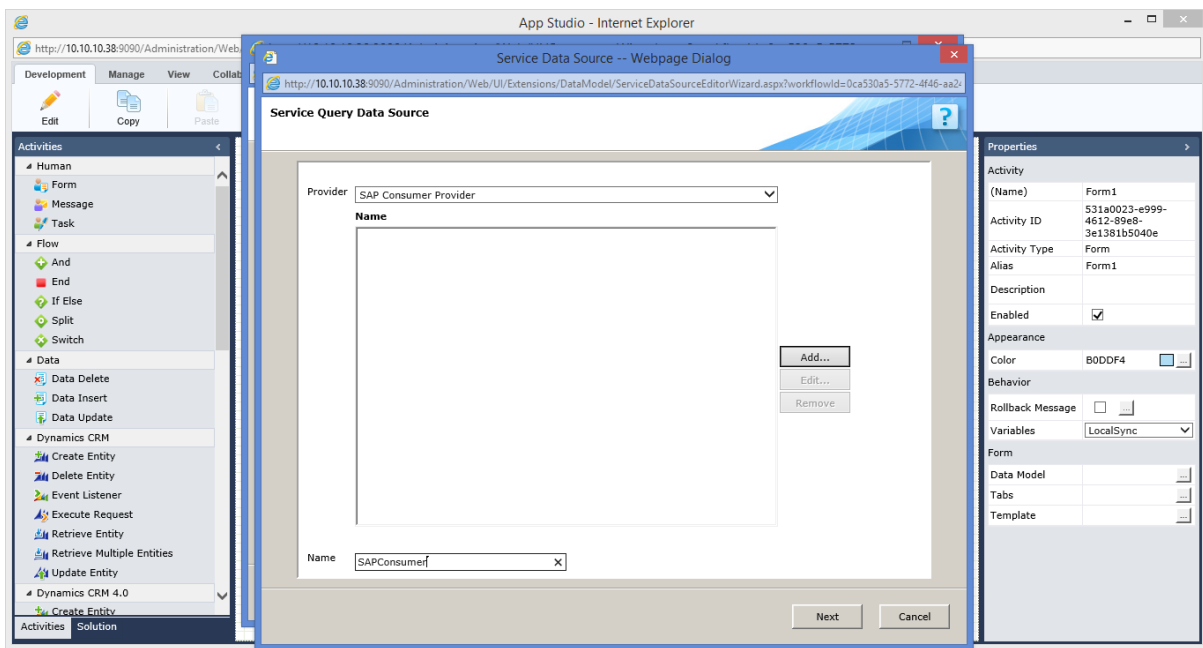
[Add schema](#)

OK Cancel

REST Service Consumer

SAP Service Query

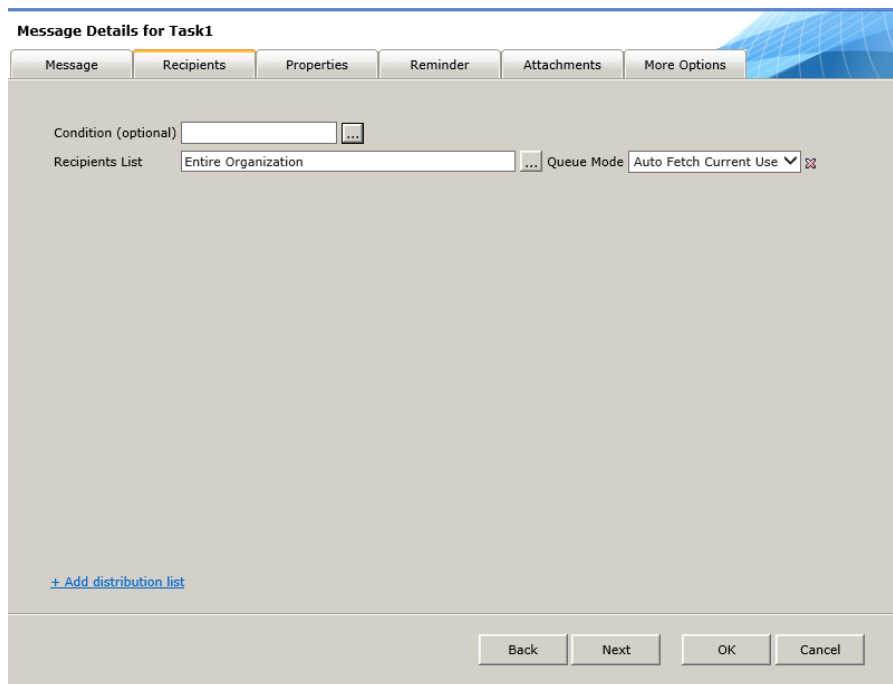
It is now easier than ever to display SAP information in Sequence Kinetics forms. You can consume any SAP service and bind it to a container such as a grid or form.



SAP Consumer Provider

Auto Fetch Queue

We have added a new Queue mode to the Task activity Queue Mode list. Using the Auto Fetch Current User Queue mode, the task is automatically fetched to the user who completed the previous form.



Auto Fetch Queue

Sequence Templates

Sequence Kinetics v7.7 introduced a rich library of pre-built templates. These templates can be a great starting point for developing workflow applications. They will save you time by providing well-built workflows, forms and features similar to common scenarios. You can quickly copy and customize them for your needs. In Sequence Kinetics v7.8, these templates have been added to the default installation.

Enhanced Features

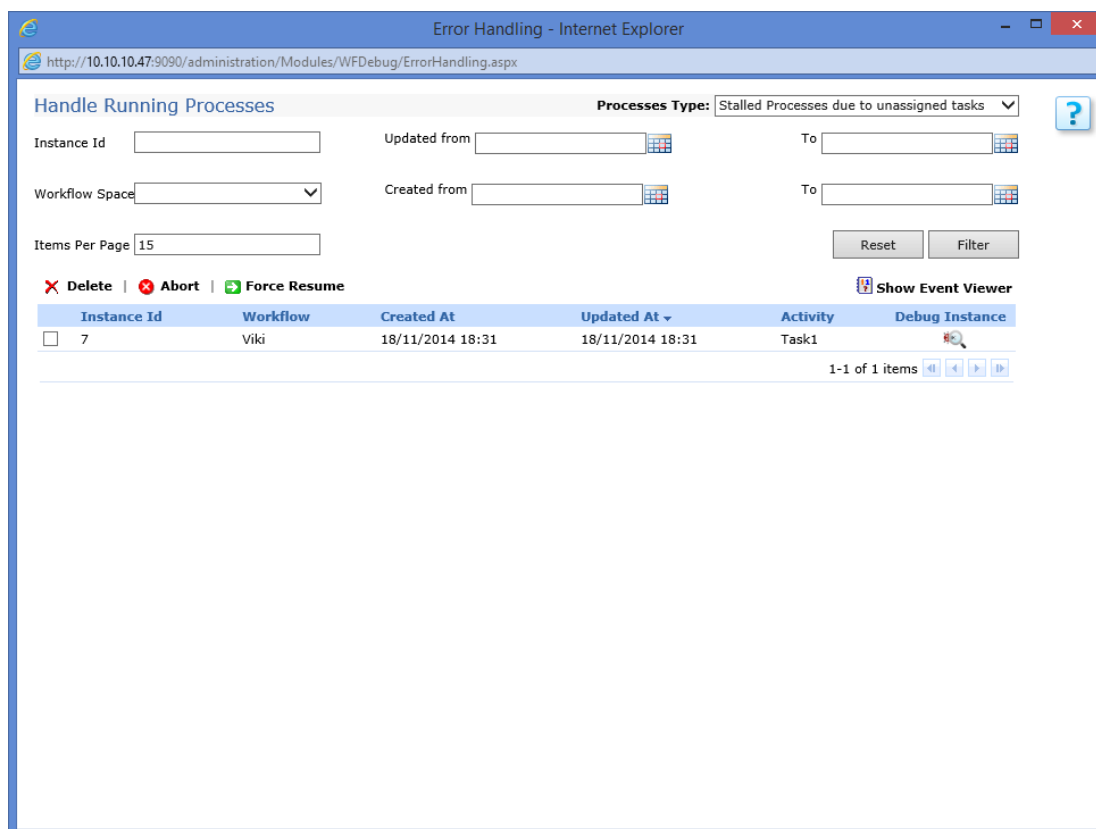
Handle Running Processes – Unassigned Tasks

The Handle Running Processes wizard gives the Administrator more information and greater control over troubleshooting problematic processes.

The Administrator can view, delete, abort, or force resume these processes. The wizard also includes the option to debug the processes.

In Sequence Kinetics 7.8, we have added a new view which displays processes which are stalled since they have task(s) that are not assigned to any user.

A process may reach such a status as a result of an exception during recipient calculation, or a design error where the task recipient lists does not return any user.



Handle Running Processes

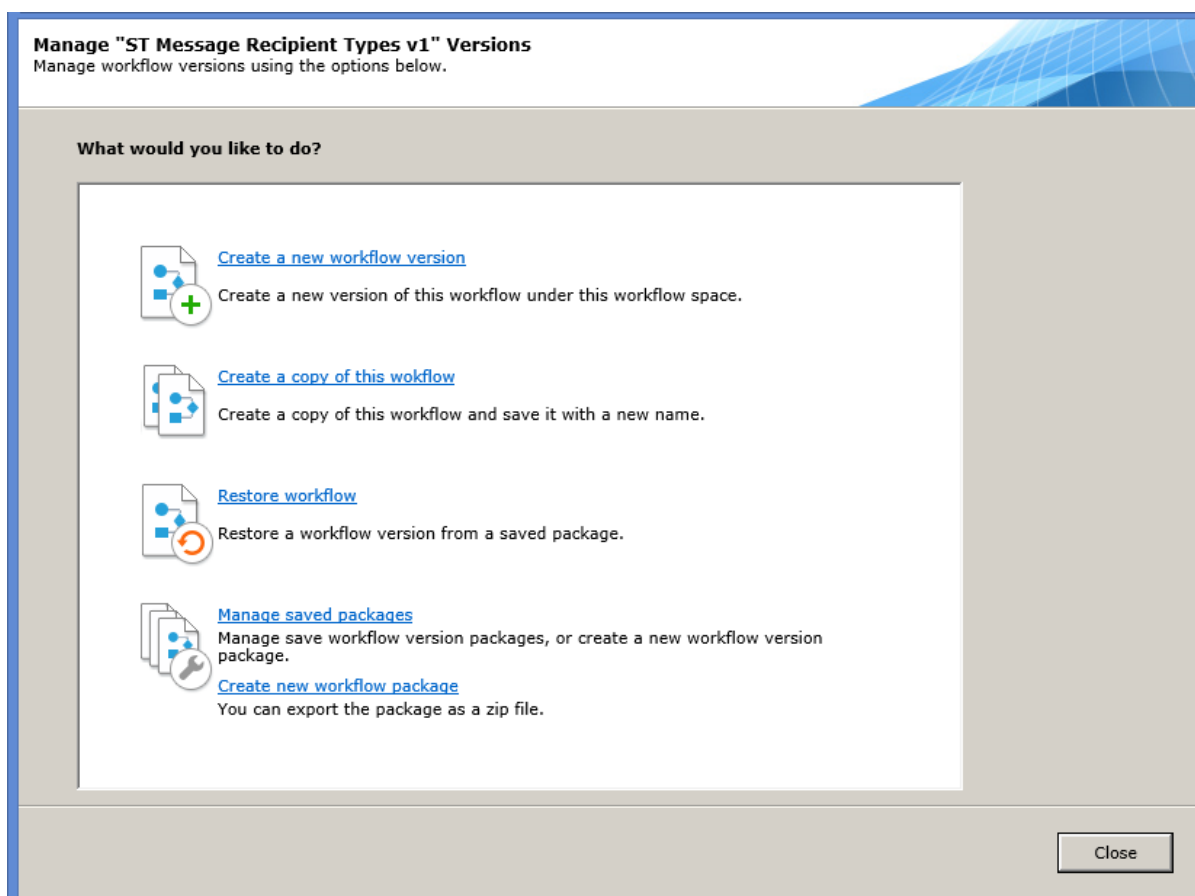
Service Query Parameter Management

In many cases, your service query must pass values to the service you are consuming. The values can come from the form or from the process data. In Sequence Kinetics 7.8, we have introduced an easy-to-use wizard where you can define your parameters, their type and Mask if required.

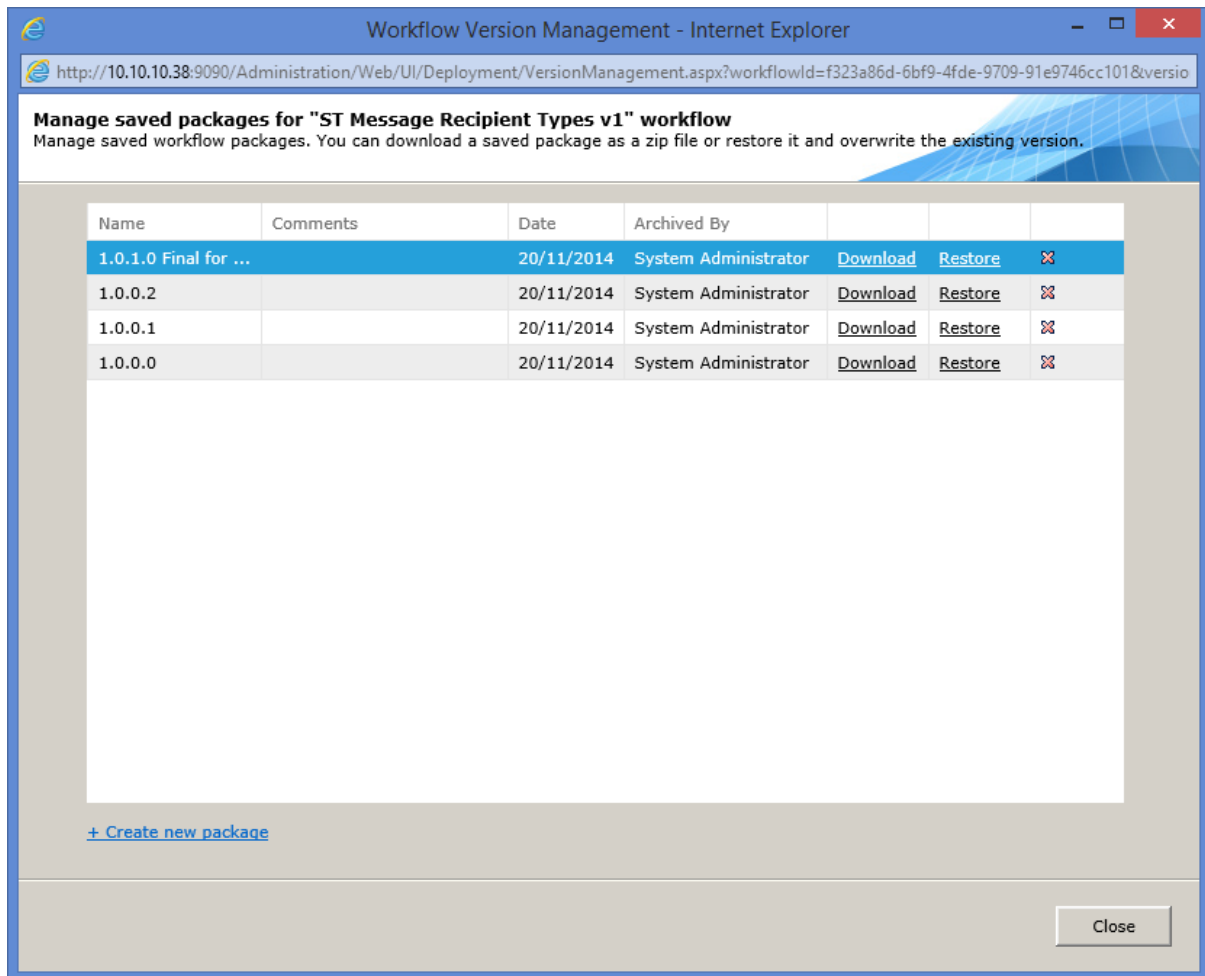
Version Management

The Version Management feature provides a convenient way of managing different versions of a Sequence workflow. You can package, restore and move workflow versions from one Sequence site to another (deployment). You can also create new versions of a workflow and duplicate workflows.

Sequence Kinetics 7.8 introduces a shiny new User Interface for this feature. It includes new functionality such as: apply single choice to multiple objects in the tree, collapsible tree node, and more control options when importing, restoring or versioning workflows.



Version Management



Version Management

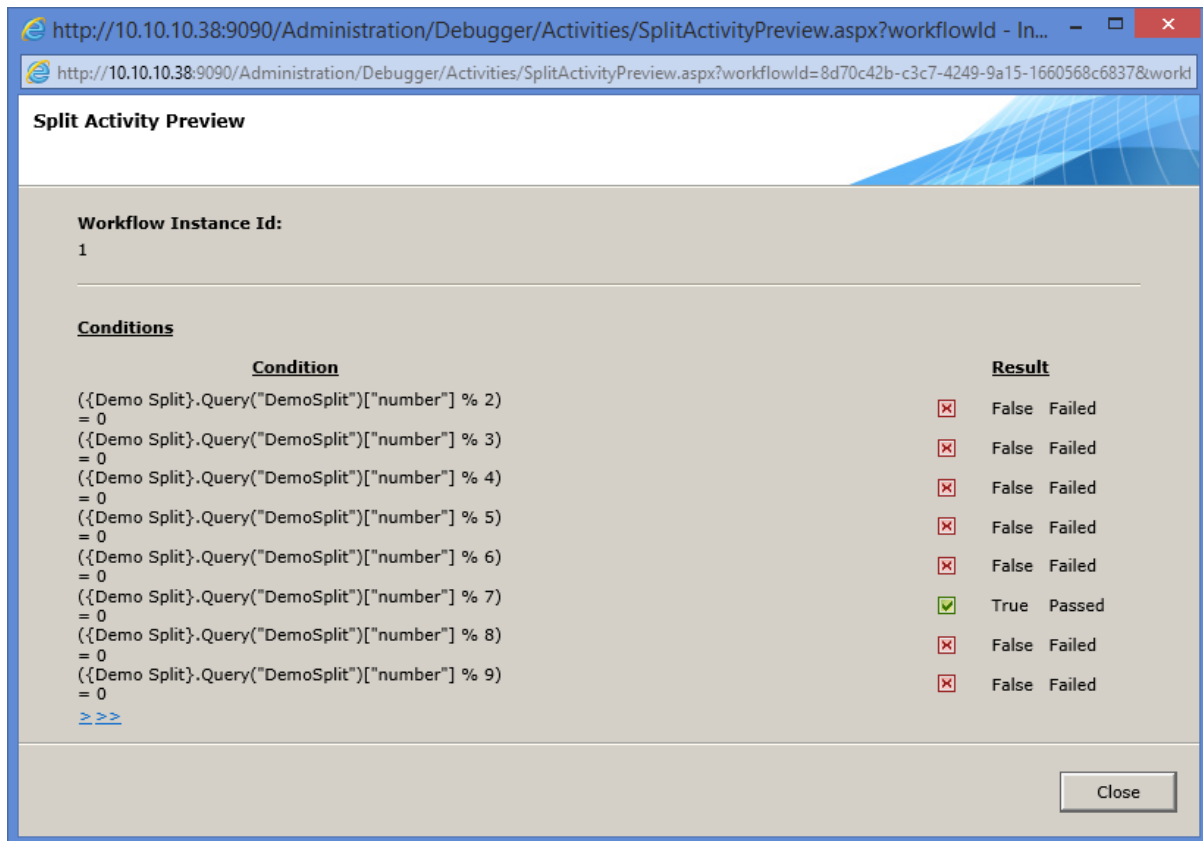
See [this guide](#) for details on how to use the Version Management feature.

Installation

You can now easily add or remove Sequence features such as Process^{TO GO}, CRM Connector and more. This can be done using the Modify option of the Sequence installation.

Flow Activity Preview

Have you ever had trouble debugging Flow activity condition results? In Sequence 7.8, you can preview the Flow activity and see the result of each branch rule calculation.



Flow Activity Preview

Security Enhancements

Protection against XSRF (cross-site request forgery) attacks has been extended to all Flowtime pages, REST services and OData services.

The key that controls the XSRF mode appears as follows:

```
<sequence.engine>
```

...

```
<security>
```

```
  <xsrProtection enabled="true" throwOnFailure="true"
  enabledOnServices="false" />
</security>
```

enabled – If this is set to false it turns off all XSRF protection (this key was available in previous versions).

enabledOnServices – Apply XSRF protection on OData services and on Flowtime services.

enabledOnPages – Apply XSRF on Flowtime pages and Administration pages.

...

</security>

</sequence.engine>

Changed the Path of Proxy Writing

When integration services such as WCF Consumers are executed for the first time, the system generates a proxy assembly. This process uses the current system's temporary directory. Now you have the ability to configure the temporary directory location. Also, you can access this directory using an application pool identity.

<sequence.engine>

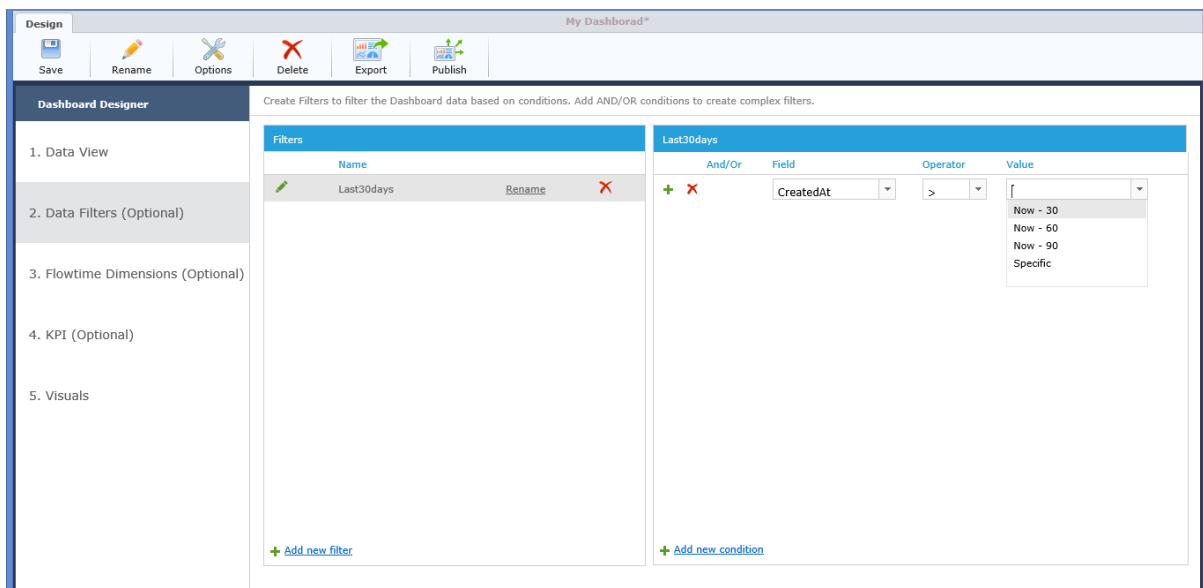
...

```
<dynamicProxyRuntime tempDirectory="path to temp directory"
useHostingIdentity="True">
```

Sequence Analytics Filters

You can now define filters that will display analytics data for the last 30 days or 90 days.

To apply such a filter, simply select one of your date fields in the filter screen and use the prebuilt expressions to define the required time interval.



Sequence Analytics Filters

Web.config Modifications

The following web.config modifications were made in this release:

Flowtime web.config – SharePoint 2013

```
<configuration>
  <sequence.engine>
    <dynamicProxyRuntime>
      <providers>
        <add name="RestWcfServiceConsumerProvider"
          type="PNMsoft.Sequence.ServiceModel.Web.RestServiceConsumerProxyFactoryProvider, PNMsoft.Sequence.ServiceModel,
          Version=7.0.0.0, Culture=neutral,
          PublicKeyToken=0a1a1b90c1c5dca1" />
      </providers>
    </dynamicProxyRuntime>
  </sequence.engine>
</configuration>
```

```
<configuration>
  <location path="_vti_bin/sites.asmx">
    <sequence.engine>
      <authentication enabled="false" />
    </sequence.engine>
  </location>
  <location path="_vti_bin/client.svc">
    <sequence.engine>
      <authentication enabled="false" />
    </sequence.engine>
  </location>
</configuration>
```

Flowtime web.config – SharePoint 2010

```
<configuration>
  <sequence.engine>
    <dynamicProxyRuntime>
      <providers>
        <add name="RestWcfServiceConsumerProvider"
          type="PNMsoft.Sequence.ServiceModel.Web.RestServiceConsumerProxyFactoryProvider, PNMsoft.Sequence.ServiceModel,
          Version=7.0.0.0, Culture=neutral,
          PublicKeyToken=0a1a1b90c1c5dca1" />
      </providers>
    </dynamicProxyRuntime>
  </sequence.engine>
</configuration>
```

```
rProxyFactoryProvider, PNMsoft.Sequence.ServiceModel,  
Version=7.0.0.0, Culture=neutral,  
PublicKeyToken=0a1a1b90c1c5dca1" />
```

```
<configuration>  
  <location path="_vti_bin/sites.asmx">  
    <sequence.engine>  
      <authentication enabled="false" />  
    </sequence.engine>  
  </location>  
  <location path="_vti_bin/client.svc">  
    <sequence.engine>  
      <authentication enabled="false" />  
    </sequence.engine>  
  </location>
```

Flowtime web.config – SharePoint 2007

```
<configuration>  
  <sequence.engine>  
    <dynamicProxyRuntime>  
      <providers>  
        <add name="RestWcfServiceConsumerProvider"  
          type="PNMsoft.Sequence.ServiceModel.Web.RestServiceConsum  
          erProxyFactoryProvider, PNMsoft.Sequence.ServiceModel,  
          Version=7.0.0.0, Culture=neutral,  
          PublicKeyToken=0a1a1b90c1c5dca1" />  
      </providers>  
    </dynamicProxyRuntime>  
  </sequence.engine>
```

Web.config – Administration

```
<configuration>  
  <sequence.engine>  
    <dynamicProxyRuntime>  
      <providers>
```

```
<add name="RestWcfServiceConsumerProvider"
type="PNMsoft.Sequence.ServiceModel.Web.RestServiceConsumerProxyFactoryProvider, PNMsoft.Sequence.ServiceModel,
Version=7.0.0.0, Culture=neutral,
PublicKeyToken=0a1a1b90c1c5dca1" />
```

```
<configuration>
```

```
  <location path="SequenceServices/odata">
```

```
    <sequence.engine>
```

```
      <data.services>
```

```
        <handlers>
```

```
          <add
type="PNMsoft.Sequence.Analytics.Data.Services.DashboardDataServiceRequestHandler, PNMsoft.Sequence.Analytics, Version=7.0.0.0, Culture=neutral,
PublicKeyToken=0a1a1b90c1c5dca1" />
```

Breaking Changes

- 1) XSRF was added to OData and all Flowtime services.
Upon upgrade, the XSRF for services will be turned off by default. If turned on, it will require modification of your OData calls.
- 2) The Money field is now a generated table field of type 'money' and not 'real'. This may result in values that used to be rounded up to persist as is.
- 3) The default style of Textbox in IE10 was changed to include wrapping.
Now long text will be wrapped to match the control size instead of creating horizontal scrolling.
- 4) A spelling mistake was fixed in the predefined authentication types defined in the authentication schema namespace:

<http://pmnsoft.com/sequence/...>

changed to:

<http://pmnsoft.com/sequence/...>

This affects the claims authentication configuration section:

```
<IdentityClaims>
```

```
  <add
claimType="http://schemas.xmlsoap.org/ws/2005/05/identity/claims/emailaddress"
originalIssuer="https://domain.accesscontrol.windows.net/"
```



```
authenticationType="http://pnmsoft.com/sequence/2008/03/authentication/types/
email" />
</IdentityClaims>
```

Known Issues

See known issues online at:

<http://members.pnmsoft.com/Downloads/Lists/Known%20Issues/AllItems.aspx>

Resolved Tickets

Process No	Subject
19841	Issue with Hebrew names display in Delegation wizard.
19632	SharePoint activities help link directs to wrong help document.
19556	Issue in table management when the lookup table contains association to tblEmployees or tblEmployees view.
19271	Issue in table management for workflows that were imported from Sequence 6 and have combo defined in another combo field.
19131	Connections are not closed when using SAP RFC activity.
18891	Sequence 6 forms - 'Table Display Field' and 'Table Sort Field' are not displayed in a combo box that is based on an external table.
18403	Issues with Sequence 6 forms when using the new web part in a subsite.
18390	Flowtime grid not displaying when importing Sequence 6 forms with special characters in a variable name.
18371	SharePoint Listener - cannot listen to a new item in a Calendar list.
18290	Currency field should be "Money" in SQL table and not "Real" type.
18215	Configuration file error in SharePoint-less installation.
18141	SharePoint error when try to edit the web part "Inbox Summary" (SharePoint 2010/2013).

Resolved CRs

6030 – Newly imported workflows are not automatically made active.

3972 – Delegation login from email task.

6789 – Display Workflow and Space ID on Administration dashboard.