

# **Client Care Desktop**

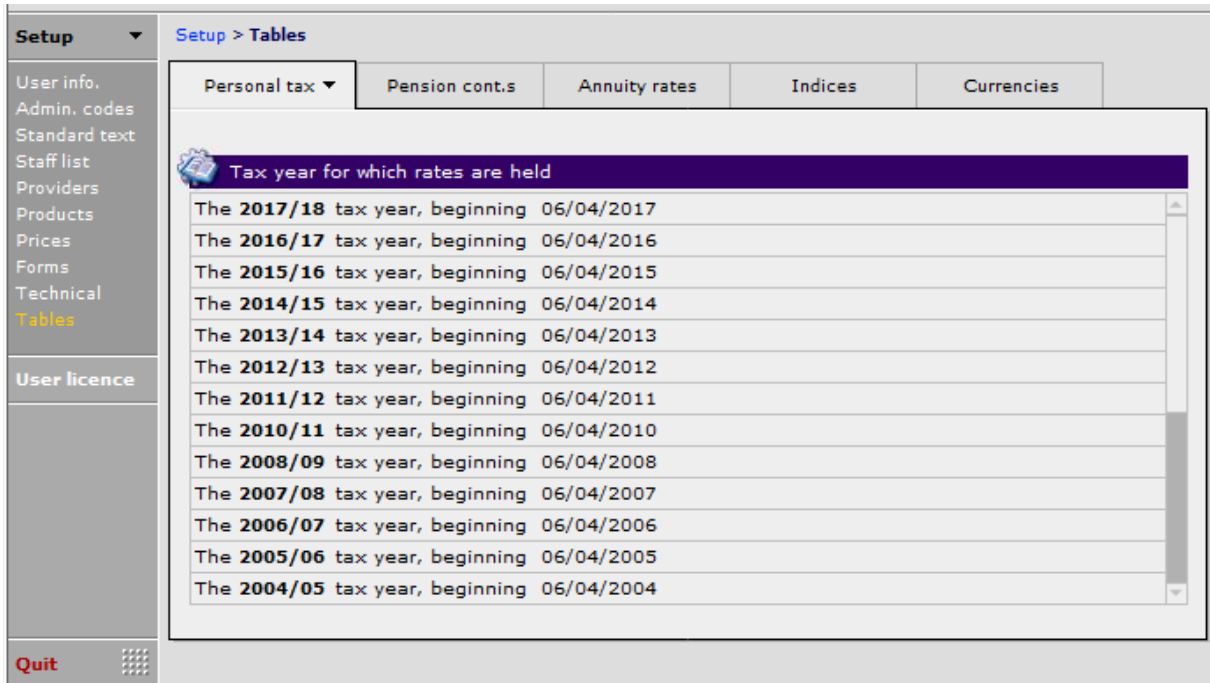
**Importing the 2018/19 Tax Table  
(CCD Version 4.x and above)**



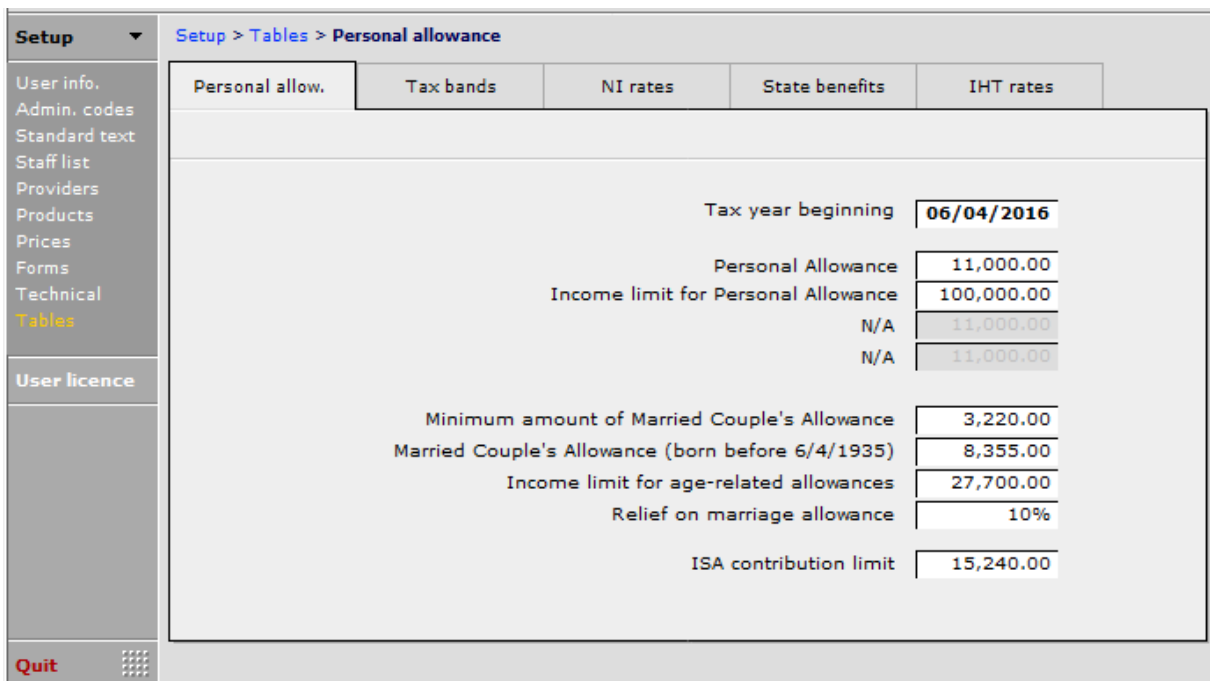
**SYNAPTIC  
CLIENT CARE**

The first step in adding the 2018 tax record to Client Care Desktop (CCD) is to save the excel spreadsheet 'Tax Tables\_2018\_2019' to your desktop as you will need to import this file into your system.

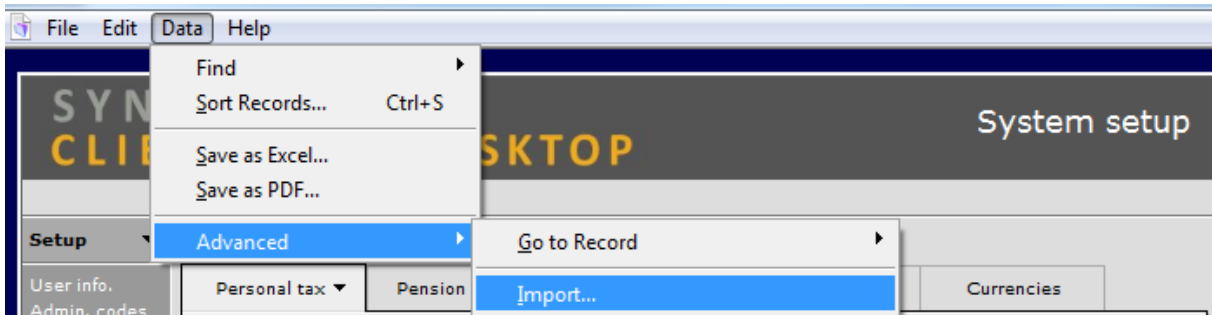
To import the 2018/19 tax record into CCD, navigate to *Setup > Tables*:



Click on any tax table in the list, you will see the following screen:



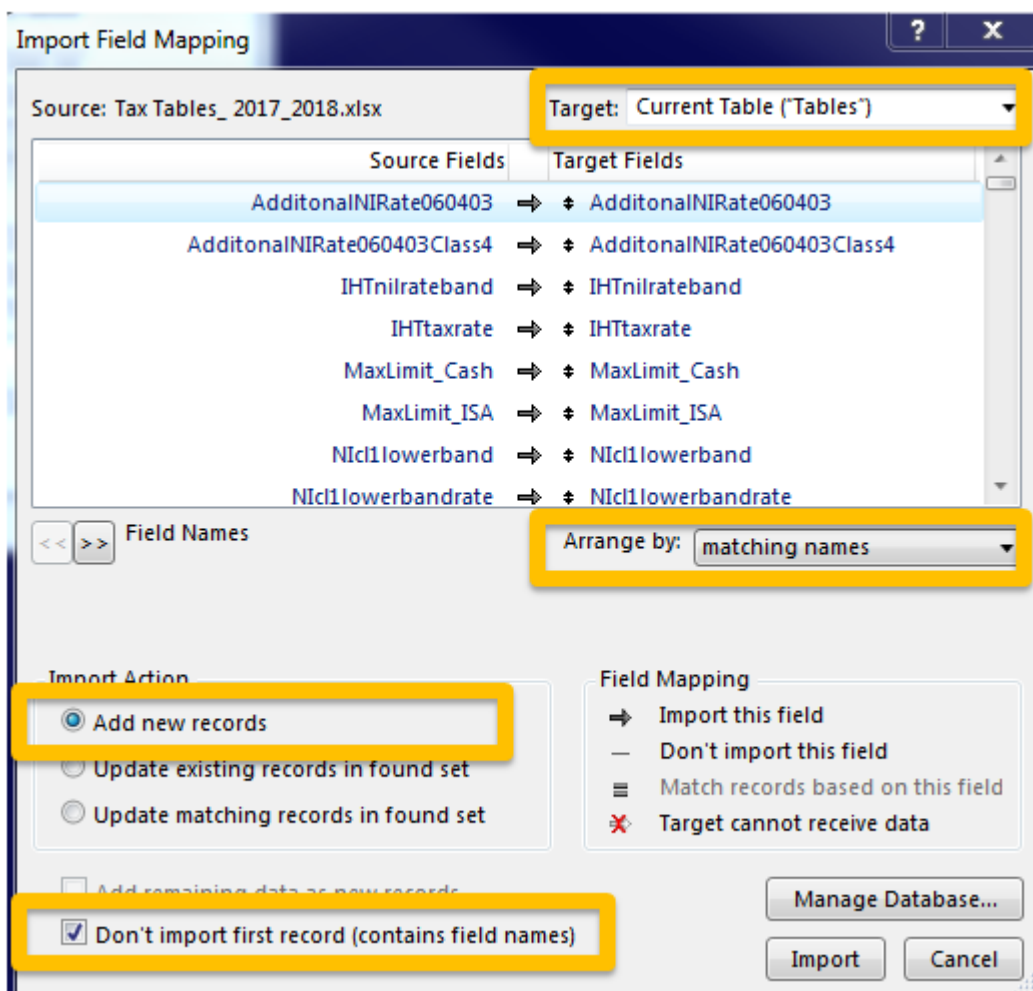
From the top menu click on **Data > Advanced > Import**, and navigate to the excel spreadsheet you previously saved on the desktop, select and click **Open**.



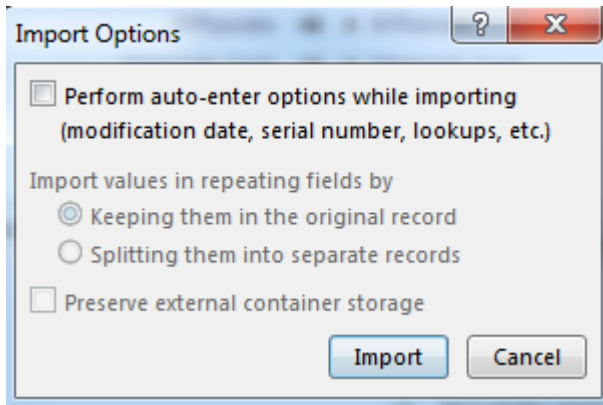
The Target should show **Current Table ('Tables')**.

Select **Add new records** then tick **Don't import first record** and **Arrange by: matching names**, which should display the same fields listed in both the Source fields and the Target Fields in the same order.

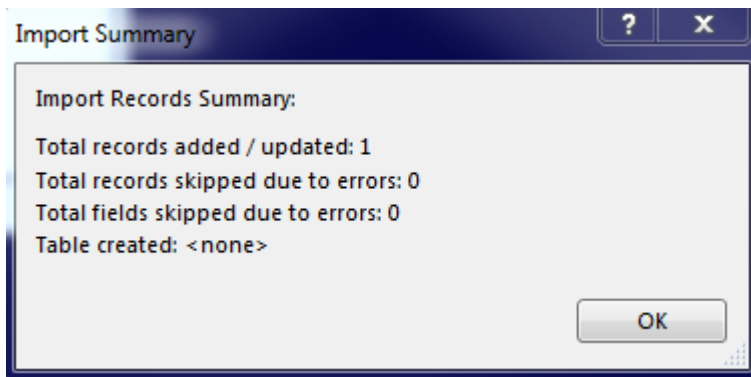
Once everything is set as highlighted below, click **Import**:



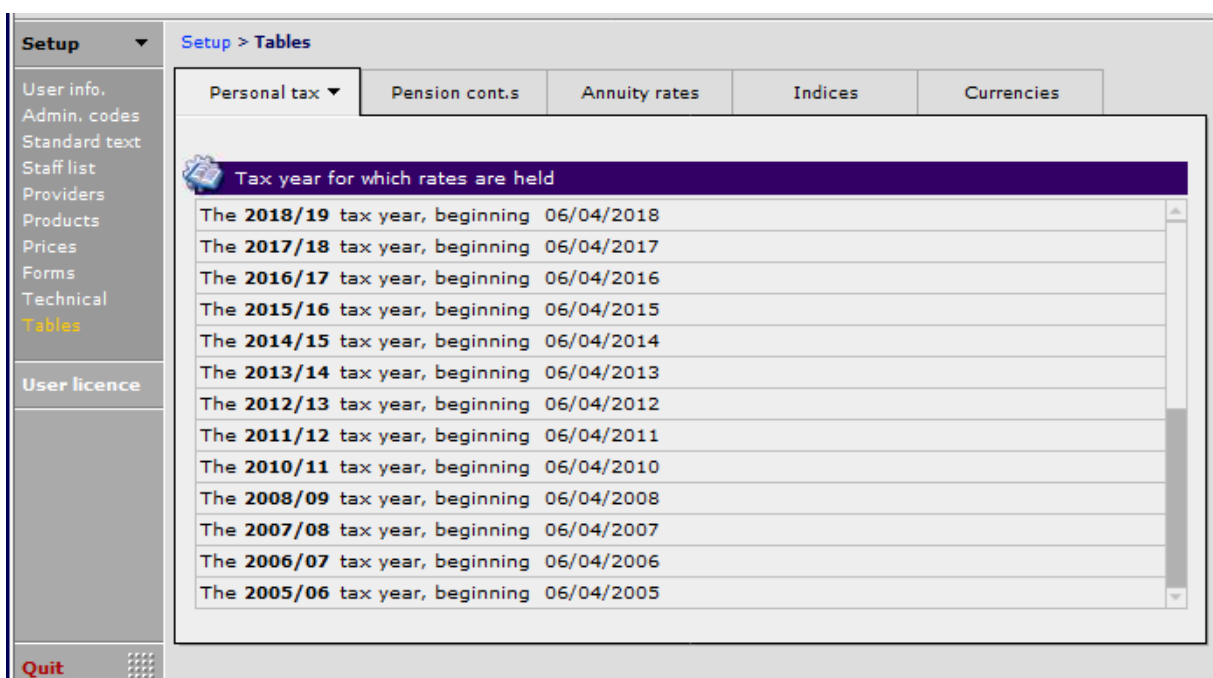
Leave **Perform auto-enter options** unticked and click **Import**.



Your new 2018 tax record will now be imported into the CCD system and you will see an Import Summary screen confirming this. Click **OK**:



The tax tables will now be available for 2018/19:





## Products & Services from Synaptic Software:

SYNAPTIC **CLIENT CARE**

SYNAPTIC **COMPARATOR**

SYNAPTIC **MODELLER**

SYNAPTIC **PRODUCT & FUND**

SYNAPTIC **RISK**

SYNAPTIC **WEBLINE**

SYNAPTIC **WEB SERVICES**



SYNAPTIC®

This document is the property of Synaptic Software Limited and the information contained herein is confidential.

This document, either in whole or in part, must not be reproduced or disclosed to others or used for purposes other than that for what it has been supplied, without prior permission from Synaptic Software Limited.

April 2018 v1.0