

Kaltura Video Plugin for Jive Setup Guide

Version: 1.0

Kaltura Business Headquarters

5 Union Square West, Suite 602, New York, NY, 10003, USA

Tel.: +1 800 871 5224

Copyright © 2014 Kaltura Inc. All Rights Reserved. Designated trademarks and brands are the property of their respective owners.

Use of this document constitutes acceptance of the Kaltura Terms of Use and Privacy Policy.

Contents

Preface	4
About this Guide	4
Audience	4
Prerequisite Reading	4
Document Conventions	4
Section 1 Prerequisites	5
Section 2 Understanding the Setup Process	7
The Kaltura Application Framework (KAF) Admin Console	7
KAF Modules	7
Mandatory Settings	8
KAF Admin Module Configuration	9
Player	9
Player Look and Feel	9
Captions	9
Authoring Methods	10
Media Upload	10
Webcam Recording	10
Screen Recording	11
Video Presentation	11
Metadata	11
Comments	12

Preface

This preface contains the following topics:

- [About this Guide](#)
- [Audience](#)
- [Prerequisite Reading](#)
- [Document Conventions](#)

About this Guide

This guide describes how to setup the Kaltura Video Plugin for Jive. Instructions are provided for setting up the plugin for Jive behavior and how to control user roles and permissions using the Kaltura Application Framework (KAF) Admin Console.



NOTE: Please refer to the official and latest product release notes for last-minute updates. Technical support may be obtained directly from: [Kaltura Customer Care](#).

Contact Us: Please send your documentation-related comments and feedback or report mistakes to knowledge@kaltura.com. We are committed to improving our documentation and your feedback is important to us.

Audience

This guide is intended for Jive and Kaltura administrators.

Prerequisite Reading

- [Kaltura Video Plugin for Jive User Guide](#)
- [Kaltura Video Plugin for Jive Deployment Guide](#)

Document Conventions

Kaltura uses the following admonitions:

- Note



NOTE: Identifies important information that contains helpful suggestions.

- Workflow



Workflow: Provides workflow information.

1. Step 1
2. Step 2

Prerequisites

The following items are required to setup the Kaltura Video Plugin for Jive:

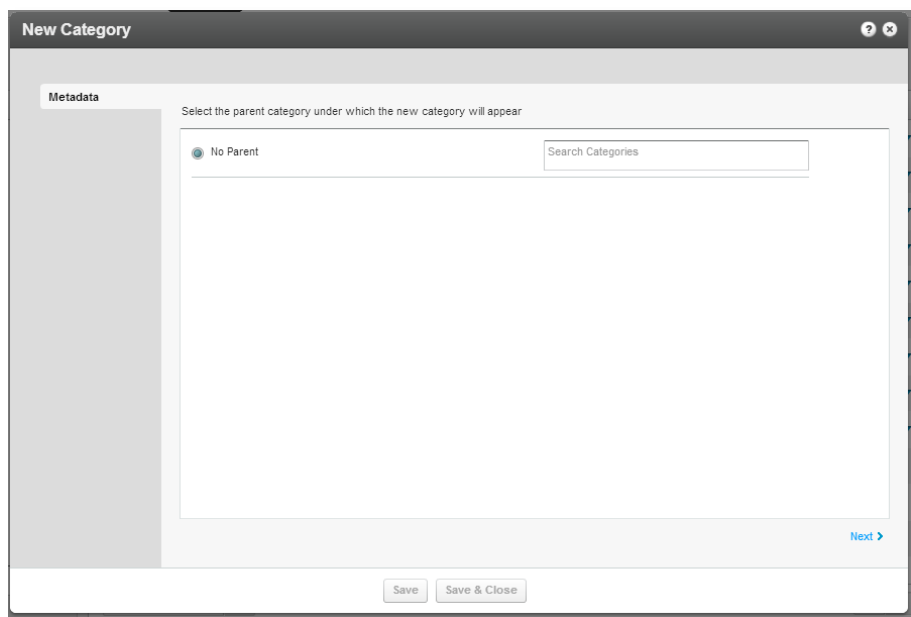
- Access to a Jive environment with Account Admin permissions.
- A Kaltura account - Please contact your Kaltura representative for your Kaltura account details.
- Deployment of the Kaltura Video Plugin for Jive on your Jive environment. For deployment instructions, see [Kaltura Video Plugin for Jive Deployment Guide](#)
- KAF Admin Console – please ask your Kaltura representative for credentials to access your KAF Admin Console instance.

Before You Begin

You will need to create a Jive root category in the KMC.

To create the Jive root category in the KMC

1. Log into the KMC.
2. Select the **Content** tab and then select the **Categories** tab.
3. Click **Add Category**.
4. On the New Category window, select the position of the root category and save your new category.



5. Click **Next**.
6. In the metadata tab, enter metadata for your new category and click **Save**.

New Category

Metadata

Jump to...

Name: Jive

Description: Used as teh root category for Jive

Tags:

Reference ID:

Save

Save & Close

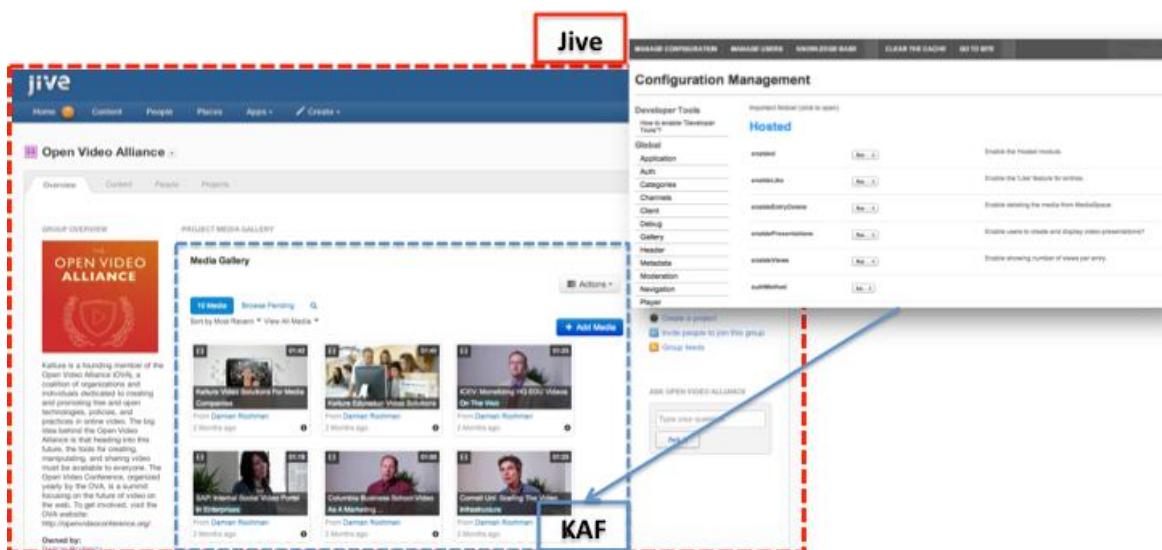
Understanding the Setup Process

The Kaltura Video Plugin for Jive offers an out-of-the-box solution that enables users to view, record, upload, publish, search, and share video directly from their Jive environment. This translates into time and money saved for your organization, improved employee engagement, creativity and collaboration, as well as ease of use for employees.

The Kaltura Application Framework (KAF) Admin Console

The Kaltura Video Plugin for Jive is implemented on top of the Kaltura Application Framework (KAF), a feature rich framework that allows flexible and streamlined integration of Kaltura's video solution and products into 3rd party applications such as Jive. KAF is hosted and served directly from the Kaltura cloud servers and once integrated into your Jive environment, presents different video components and workflows to users.

At the backend, the Kaltura Application Framework provides a flexible and extensible administration panel, called "KAF Admin Console". The KAF Admin Console offers full control over the user experience and when interacting with videos inside Jive. Nearly all configuration aspects of the Kaltura Video Plugin for Jive are configured through the KAF Admin Console.



KAF Modules

Your KAF instance is composed of multiple **KAF modules**, such as "Application", "Player", and "Auth". Each module controls a different aspect of your Kaltura Video Plugin for Jive instance. A KAF module is composed of a set of **configuration fields**. All KAF modules are listed on the left menu in your KAF Admin Console instance.



NOTE: Your KAF Admin Console may display modules and configuration fields that are not listed in this guide, some of which may be disabled. It is important that you do not modify the configuration of the disabled modules (and not to enable them) without consulting with your Kaltura representative.

The following KAF modules are required for configuring the Kaltura Video Plugin for Jive and are described in this guide:

- Application
- Client
- Auth
- Security
- Player
- Metadata
- Categories
- Addcontent
- Captions
- Comments
- Customdata
- Publish
- Screencapture
- Userreports
- Channelmoderation
- Audioentry
- Imageentry
- Videopresnetation
- Browseandembed
- Hosted

KAF Admin General Configuration



Related KAF modules: Application, Auth, Client, Security, Categories, Addcontent, Publish, Browseandembed, Hosted

Mandatory Settings

Your KAF account comes pre-configured with the following settings, which **should not be changed**:

Module	Fields	Description
Application	InstanceId, privacyContext, userRoleProfile	Internal constant identifiers of your KAF instance. Please note that privacyContext should be empty.
Auth	sslSettings	All site
Client	serviceUrl	https://www.kaltura.com
	VerifySLL	Yes
Security	allowLoadInIframe	Yes
Addcontent	enabled	Yes
Userreports	enabled	Yes
Publish	enabled	Yes

Module	Fields	Description
Browseandembed	enabled	Yes
Hosted	enabled	Yes
	enableLike	Yes
	enabledEntryDelete	Yes
	enablePresentations	Yes
	enableViews	Yes
	authMethod	KS

In addition, you will need to specify the root category you [created](#) under the Categories module.

Module	Fields	Description
Categories	rootCategory	Select the category you created in the KMC.

KAF Admin Module Configuration

This section describes how to configure the KAF Modules.

Player



Related KAF modules: Audioentry, Imageentry, Captions

Player Look and Feel

Module	Fields	Description
Player	playerId	Choose the player to use when playing back videos in My Media and in Media Gallery. Use a player id (uiConf id) from the list of players available in your KMC account (In KMC, go to Studio and select Players List).
	playerVideoRatioPercent	The ratio (in percent) of the video inside the player. Standard values: 16:9 = 56.25 , 4:3 = 75 , 16:10 = 62.5
	playerEditId	The player ID (uiConf ID) of the player that is used to edit entries.
	autoPlayOnLoad	Determines whether the video should start playing automatically when the player loads.
Audioentry	audioPlayerId	Player ID (uiConf ID) of the player that plays audio entries.
Imageentry	imagePlayerId	Player ID (uiConf ID) of the player that shows images.

Captions

Enable the captions module to allow end users to upload captions to entries they own.

Module	Fields	Description
Captions	captionsKsuld	The uiConf ID of the Kaltura Simple Uploader (KSU) used for captions. MediaSpace uses KSU to upload .SRT and .DFXP caption files.



NOTE: Regardless of the Captions' settings, when captions are available for a video entry they are also available to the end user playing the video.

Authoring Methods

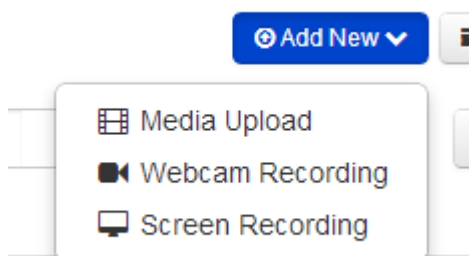


Related KAF modules: Widgets, Screenshot, Videopresentation

The KAF Admin Console provides great flexibility in configuring different authoring methods users can utilize for creating new content. To date, the following methods are available (with additional methods to be added in the future:

- Uploading media from the local machine
- Capturing a video from a webcam using the Kaltura Webcam Recorder (KRecord)
- Creating a new screencast using the Kaltura Screen Recorder (KSR)
- Synchronizing a video with a presentation

Please refer to the [Kaltura Video Plugin for Jive Deployment Guide](#) for more details about each of these methods.



Media Upload

Module	Fields	Description
Widgets	ksuld	The uiConf ID of the uploaded used to upload videos, images and audio files.

Webcam Recording

Module	Fields	Description
Widgets	krecordId	The uiConf ID of the kRecord widget. MediaSpace uses kRecord to record and

Module	Fields	Description
		upload video from a webcam.
	rtmpUrl	The URL of your RTMP Server. The URL is required for Webcam recording.

Screen Recording

Module	Fields	Description
Screencapture	Enabled	Adds the “Screen Recording” option to the Add New menu.
	ksrId	The widget ID (uiConf ID) of the Kaltura Screen Recorder Widget (KSR) used in MediaSpace?
	videoBitrate	The video bitrate quality (in kbps) to use for the capture. For example 2000
	advancedOptionsEnabled	Enable the option to select frames per second by the user

Video Presentation

Module	Fields	Description
Videopresentations	Enabled	Adds the “Video Presentation” option to the Add New menu.
	sortMediaBy	The default sort type for video presentation entries.
	kpwlId	The widget ID (uiConf ID) of the Kaltura Video Presentation Player Widget used in MediaSpace.
	kvpmDocUploadId	The widget ID (uiConf ID) of the Kaltura Document Upload Widget used in MediaSpace.
	kvpmCreationId	The widget ID (uiConf ID) of the Kaltura Widget that is used to synchronize slides with video.

Metadata



Related KAF modules: Metadata, Customdata

Use the Metadata and Customdata modules to define what types of metadata users are able to provide when uploading new content to their My Media or to a Project or Group Media Gallery.

Module	Fields	Description
Metadata	descriptionRequired	Require users to fill in the 'Description' field when uploading or editing media
	tagsRequired	Require users to fill in the 'Tags' field when uploading or editing media.

Module	Fields	Description
	readMoreEnabled	Enable/disable read more for entry description - shortening to 500 characters.
	metaDataInReadMore	If enabled metadata is hidden until clicking on 'read more...' works for all descriptions - entry/channel/category.

Use the Customdata module to choose a custom metadata profile:

Module	Fields	Description
Customdata	enable	Enable the Customdata module.
	profileId	The ID of the custom metadata. Copy the custom data schema ID from KMC > Settings > Custom Data. (http://www.kaltura.com/index.php/kmc/kmc4#account metadata)
	dateFormat	The format of the date for the date picker?
	requiredFields	The custom data fields required before publishing media. Use custom data system names from KMC > Settings > Custom Data (http://www.kaltura.com/index.php/kmc/kmc4#account metadata)
	privateFields	The custom data fields that are not displayed in MediaSpace. Use custom data system names from KMC > Settings > Custom Data (http://www.kaltura.com/index.php/kmc/kmc4#account metadata). Note: Private custom data fields are not hidden when the media owner accesses media from My Media.

Comments



Related KAF modules: Comments

The Comments module is used to enable users to add comments to videos and to have conversations around published entries. By default, all comments are public and are visible to all viewers of the entry. For example, if a video is shared in two groups, Group A and Group B, and an employee in Group B adds a comment to the video, the comment will be visible to members of Group A. A group manager may choose to keep all comments for the group videos private, however, public comments from other groups will be visible.

Module	Fields	Description
Comments	enable	Enable the Comments module.
	commentAllowed	Defines who can add comments.
	allowClose	Allows media owners to disable/close comments for particular entries.
	showPrivateCommentsConfig	When set to Yes, adds the option "Keep comments private to channel" in the Media Gallery settings page, to allow channel owners to set comments as private.