

Why Care Companion Plans

Our Care Companion Plans set a precedent. Essential care is neatly packaged into pay-monthly plans that ensure each pet receives above-and-beyond attention.

As your furry family members age, the plans change to fit their specific needs. We keep track of payment, recommend plan changes, and update you about upcoming exams and treatments often and with transparency.

Care Companion Plans



Designed With Your Best Friend In Mind

Ask us for more details! We would love to help you find the perfect plan for your best friend.

Care Companion Plans

New Friend

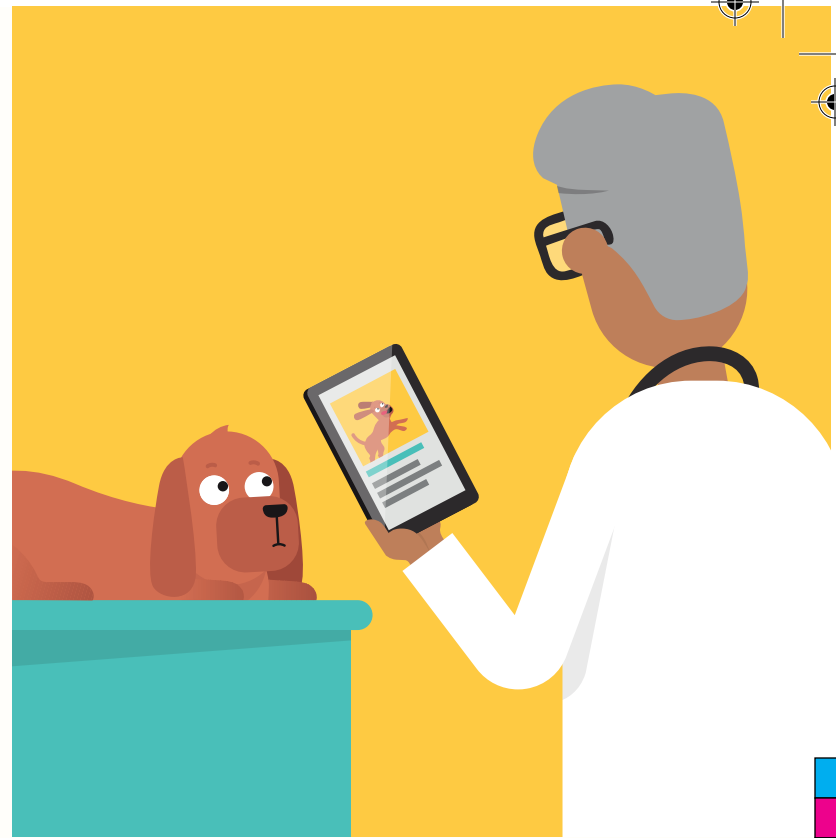
Welcome a small fry into your life with essential care that sets them up for years of happiness and health.

- Essential treatments (microchip, deworming, heartworm, flea & tick)
- Age-appropriate preventive care diagnostics
- Unlimited office visits
- Core vaccines
- Spay or Neuter
- Nail trims (2)
- 5% out-of-plan discount

Best Friend

Thrive through the energetic years and coast smoothly into the golden ones with a middle-aged to senior plan that screens for common later-in-life health problems.

- Essential treatments (deworming, heartworm, flea & tick)
- Age-appropriate preventive care diagnostics
- Unlimited office visits
- Core vaccines
- Nail trims (2)
- 5% out-of-plan discount



Basic Dental

Did you know that regular dental care can prevent some organ problems later in life? Cover all dental essentials for your furry family member plus catch and address oral problems early on.

Includes everything in Best Friend Plan PLUS:

- Dental cleaning package
- 15% out-of-plan discount

Premium Dental

Cover the dental essentials and bump it up a notch with a plan that ensures your four-legged buddy has fresh breath, healthy gums, and oral health that will last long into their senior years.

Includes everything in Basic Dental Plan PLUS:

- X-rays
- Heart monitoring
- 20% out-of-plan discount