



Association of Defense Communities
Installation Innovation 2020
San Antonio, TX

February 11, 2020
11:00 a.m. – 12 p.m.

Installation Resilience Installations Rebuilding for the Future Part II

MCLB Albany, Georgia
and
Offutt AFB, Nebraska



Growing Challenges for Resilience

- Extreme weather events and changes in environmental conditions creating new risks and vulnerabilities for military installations and their host communities.
- Understanding how shared infrastructure is exposed to risks and vulnerabilities to enhance resilience of installations and surrounding region.
- Partnerships among local, state, federal entities, and the private sector are essential to address the growing challenges to human health and safety, quality of life, infrastructure, economic growth, and military operations and readiness.

Installations Rebuilding for Resilience

Moderator


Cyrena Chiles Eitler, AICP
Strategic Planning Advisor
Stantec
Fairfax, VA

Panelists

Steven Dancer
Director, Operations Training Division
Marine Corps Logistics Base Albany, GA

Lt. Col. Chris "Conman" Conover
Director, Flood Program Management Office
Offutt Air Force Base, NE

Rita Gomez Sanders
District Representative
Congressman Jeff Fortenberry, NE



A large, curved brick sign for the Marine Corps Logistics Base in Albany, Georgia. The sign features the Marine Corps emblem at the top center. The text is arranged in several lines: 'MARINE CORPS LOGISTICS BASE' and 'ALBANY, GA.' on the top two lines, 'HOME OF' in smaller letters on the third line, 'HEADQUARTERS' on the fourth line, and 'MARINE CORPS LOGISTICS COMMAND' on the bottom line. The sign is set against a backdrop of a blue sky with white clouds and a green lawn.

MARINE CORPS LOGISTICS BASE
ALBANY, GA.
HOME OF
HEADQUARTERS
MARINE CORPS LOGISTICS COMMAND

UNCLASSIFIED



Vision and Mission



Vision

To lead the nation as the most energy efficient and energy resilient customer focused enabling platform for our Operational Forces.

Mission

To provide efficient facilities, infrastructure and a range of support and quality of life services that enable our Tenants to deliver optimal readiness to Operational Forces.

Additional Missions

Directed to support Safe Haven Operations

As directed/requested to support Defense Support Civil Authorities



Location, Location, Location!



UNCLASSIFIED



MCLB Albany



“MCLB ALBANY IS THE POWER PROJECTION PLATFORM FOR THE LOGISTICS HUB OF THE USMC--MARINE CORPS LOGISTICS COMMAND”



MARINE CORPS LOGISTICS BASE

- BASE ACREAGE- 3619 ACRES
- BUILDINGS-372
- PLANT REPLACEMENT VALUE-\$1.7B
- WAREHOUSES-19 (4.80 ACRES EACH)
- 50 MILES OF PAVED ROAD
- 18 MILES OF RAIL ROAD TRACK
- 21 MILES OF GAS LINES
- 40 MILES OF STORM DRAINS
- 64 MILES OF ELECTRICAL LINES

MARINE CORPS LOGISTICS BASE

- 34 MILES OF FIBER OPTIC CABLE
- 25 MILES OF COPPER CABLE
- 3 POTABLE WATER WELLS
- 40 MILES OF WATER LINES
- 5,000 PERSONNEL
- FAMILY QUARTERS-PPV 110 UNITS
- RANGES—TEST, PISTOL AND SKEET
- NO ENCROACHMENT OR ENDANGERED SPECIES ISSUES

UNCLASSIFIED



Preparing for the Fight



- By failing to prepare, you are preparing to fail!
- Relationships:
 - Command deck/city and county government
 - Emergency Management/Mutual Aid Agreements (MAA)
- Training:
 - Monthly EOC Watch Officer
 - Monthly Mass Notification Warning System (MNWS)
 - Host classes by GEMA, TEEX, Red Cross, etc.
- Exercises:
 - Annual Installation Table Top/Full Scale
 - Annual “Safe Haven” Table Top/Functional
 - Semiannual Installation drills for Shelter-in-Place/Active Shooter
 - State/Regional/DoD



Real World Engagements



- Real world incidents impacting MCLBA:
 - Aug 1996: Tropical Storm Alberto – Major flooding of SWGA
 - July 2015: Independence Day Lightning 10 (L10) Evacuation
 - Aug 2015: Tropical Storm Erika - FEMA Incident Support Base (ISB)
 - Dec 2015: Dougherty/Lee County Flood
 - Sept/Oct 2016: Hurricane Matthew – 7,000 personnel, FEMA ISB, DLA Fuel
 - Jan 2017: Dougherty County Straight Line Winds and EF-0 Tornado
 - Jan 2017: EF-3 Tornado – MCLBA impacted
 - Sept 2017: Hurricane Irma – 6,200 personnel (ADVON deployed), FEMA ISB
 - Sept 2018: Hurricane Florence – 6,000 personnel (ADVON deployed)
 - Oct 2018: Hurricane Michael – MCLBA impacted, FEMA ISB, BSI for GAANG
 - Sept 2019: Hurricane Dorian – 6,500 personnel, FEMA ISB



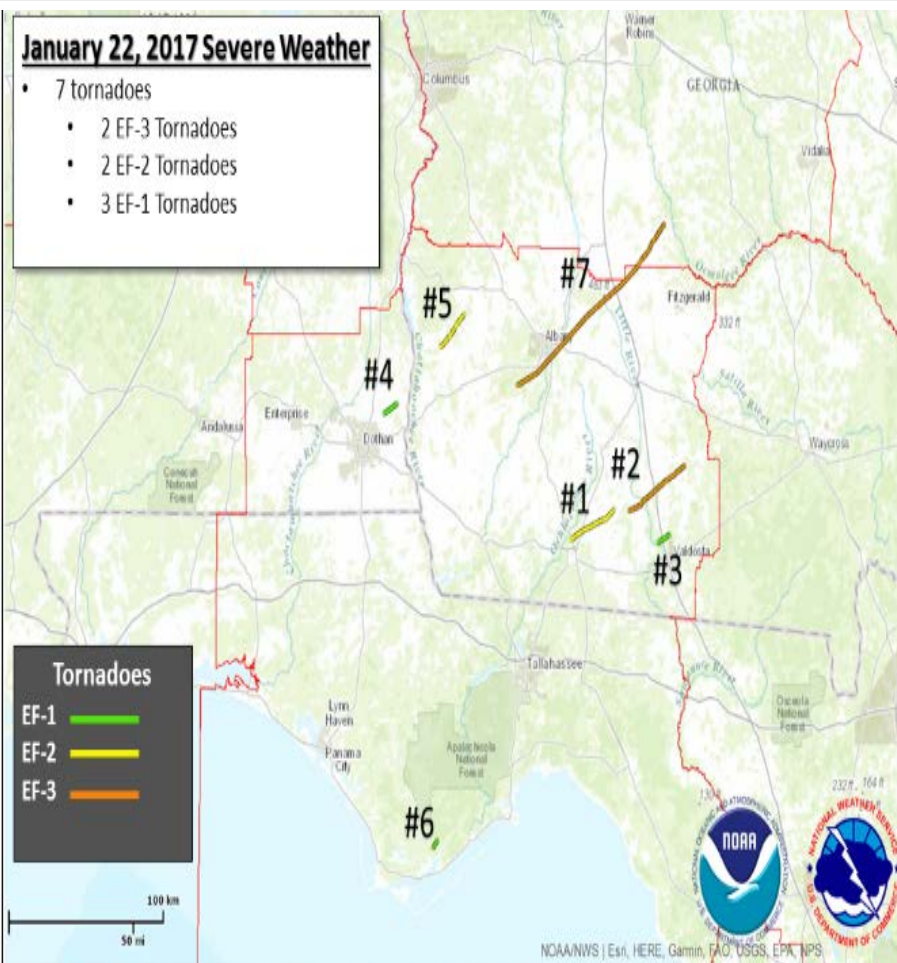
SWGA Tornadoes

January 2017



January 22, 2017 Severe Weather

- 7 tornadoes
 - 2 EF-3 Tornadoes
 - 2 EF-2 Tornadoes
 - 3 EF-1 Tornadoes



Albany Tornado

1/22/2017

Rating: EF-3

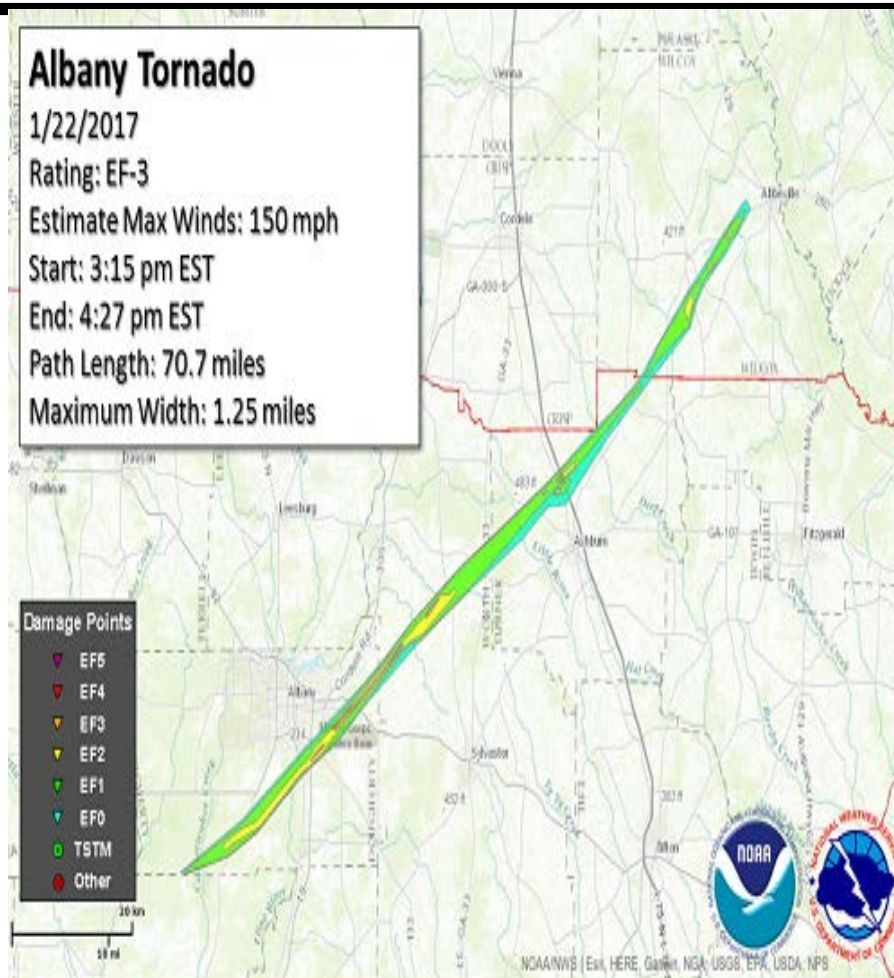
Estimate Max Winds: 150 mph

Start: 3:15 pm EST

End: 4:27 pm EST

Path Length: 70.7 miles

Maximum Width: 1.25 miles





January 2017 Timeline

- January 2nd

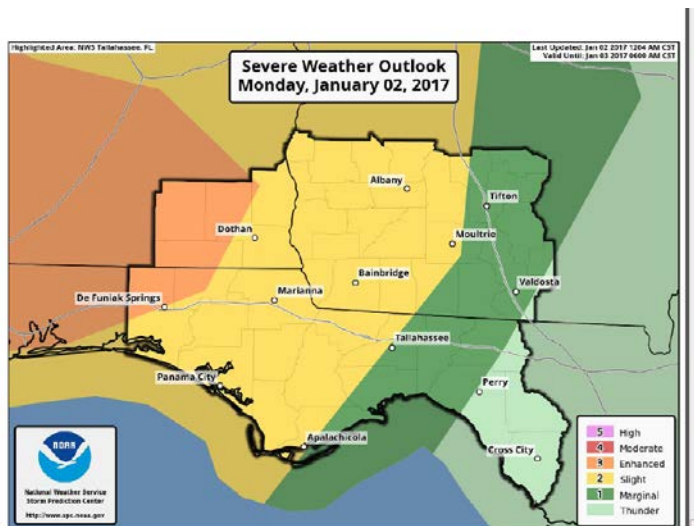
- Straight line winds and EF-0 tornado impact Dougherty County/Albany
- Holiday weekend

- January 18th

- NWS TAE one pager/Wildcard sent out to the workforce of potential destructive weather for the weekend

- January 20th

- NWS TAE conducts a webinar/updated Wildcard sent out to the workforce
- Radios/Computers taken home by MAO/IEM



Social Media:
f NWSTallahassee

01/02/2017
5 am EST

SPC Outlook

Saturday Morning until Sunday Morning



Sunday Morning through Afternoon



UNCLASSIFIED

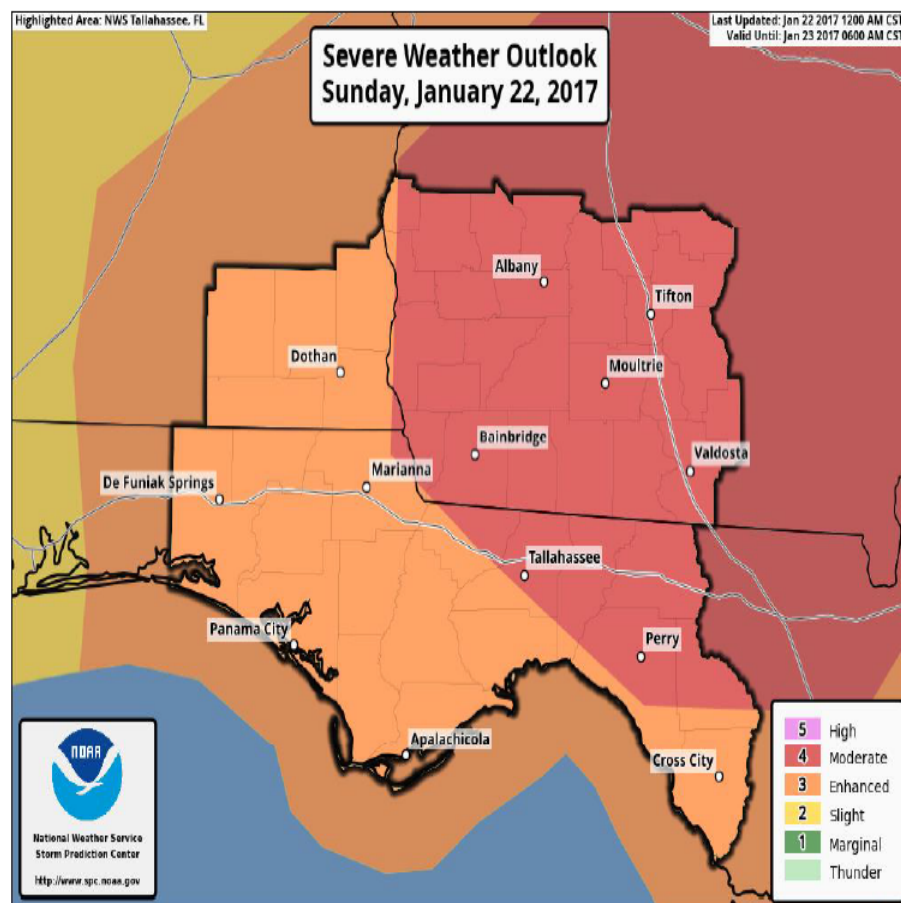


January 22, 2017



- January 22nd
 - 0200 Tornado Warning NWS
 - 0204 Tornado Warning MCPD
 - 0858 Special Weather Bulletin
 - 1247 Tornado Watch NWS
 - 1515 Tornado Warning NWS
 - 1519 Tornado Warning MCPD
 - 1520 Tornado impact SW corner of MCLBA

Severe Threat Today



UNCLASSIFIED



Response Activities



- Unified Command
 - Life Safety Operations
 - Account for GA PWR employees and employee in Bldg 1121
 - Secure utilities (gas and power)
 - Incident Stabilization
 - Windshield damage assessment
- Emergency Operations Center (EOC)
 - Challenges to make entry to the Installation
 - EOC formally activated at 1743
 - Priorities
 - Life Safety Operations
 - Incident Stabilization
 - Restore water supply
 - Power to Critical Infrastructure/Life Support Activities
 - Clear roads/perimeter
 - Preserve Property/Continue the Mission
 - Security of the Installation
 - Refueling operations to sustain power
 - Establish connectivity
- Recovery
 - Led by Installation & Environmental Division while being supported by the EOC

UNCLASSIFIED



Tornado Impacts



- Roughly 118 Million in damages
- Over 600 acres of forested land was destroyed
- Approximately 60 buildings were damaged in some manner
- Roughly 9 miles of perimeter fencing was damaged or destroyed
- All utilities (water, gas, electricity) were interrupted at some point in time and restored at varying times during the recovery process
- Network connectivity lost for several days
- MCPD sustained 29 flat tires from tornado debris



UNCLASSIFIED



This figure is an aerial map of a port area, overlaid with a color-coded damage assessment. The map is divided into several zones: a large blue area in the center-left, a yellow area in the center-right, and a red area in the bottom-right. A dashed blue line runs diagonally across the map. Several inset photographs are included, each with a white arrow pointing to a specific location on the map. The top-left inset shows a paved area with a white vehicle. The top-right inset shows a large, damaged building. The middle-left inset shows a damaged structure. The middle-right inset shows a damaged structure. The bottom-left inset shows a damaged structure. The bottom-right inset shows a damaged structure. The map also includes various labels and symbols, such as '100', '200', '300', '400', '500', '600', '700', '800', '900', '1000', '1100', '1200', '1300', '1400', '1500', '1600', '1700', '1800', '1900', '2000', '2100', '2200', '2300', '2400', '2500', '2600', '2700', '2800', '2900', '3000', '3100', '3200', '3300', '3400', '3500', '3600', '3700', '3800', '3900', '4000', '4100', '4200', '4300', '4400', '4500', '4600', '4700', '4800', '4900', '5000', '5100', '5200', '5300', '5400', '5500', '5600', '5700', '5800', '5900', '6000', '6100', '6200', '6300', '6400', '6500', '6600', '6700', '6800', '6900', '7000', '7100', '7200', '7300', '7400', '7500', '7600', '7700', '7800', '7900', '8000', '8100', '8200', '8300', '8400', '8500', '8600', '8700', '8800', '8900', '9000', '9100', '9200', '9300', '9400', '9500', '9600', '9700', '9800', '9900', '10000'. A blue arrow points to the top-left corner of the map, and a dashed blue line runs diagonally across the map.



FOR OFFICIAL USE ONLY

Map Generated using the Geographic Information System
Managed by the GIS Office
MCLD Advisory

NOTE: THIS MAP IS FOR REFERENCE ONLY
THIS MAP IS FOR OFFICIAL USE ONLY (NOOK)



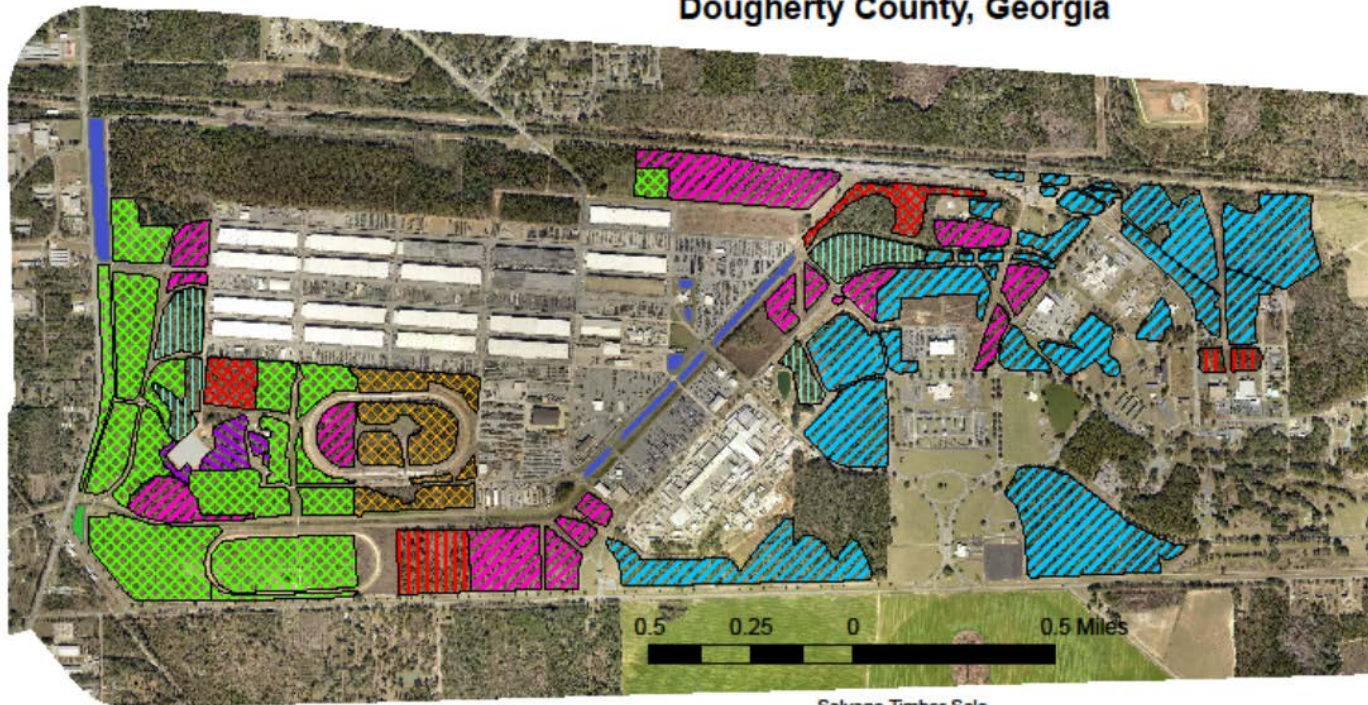
UNCLASSIFIED



Damage to Forest & Clean-up/Salvage Plan



MCLB Albany Salvage Timber Sale Dougherty County, Georgia



Tornado Damage

Cover_Type

- Clearcut Hardwood
- Clearcut Longleaf
- Clearcut Longleaf Hwd
- Clearcut Slash
- Clearcut Slash Salvage Thin N
- Clearcut Trees
- Pecan Orchard
- Pecan Outside Fence

- Salvage Thin
- Salvage Thin Longleaf
- Salvage Thin Mixed Pine Hwd
- Salvage Thin Slash

Salvage Timber Sale

Total acreage: 862

Total within fence acreage: 646 acres

Slash Salvage Thin: 230 acres

Slash Salvage Clearcut: 115 acres

Mature Longleaf Salvage Shelterwood Cut: 23 acres

Mature Longleaf Salvage Clearcut: 39 acres

Mature Longleaf/Hardwood Salvage Clearcut: 21 acres

Hardwood Salvage Clearcut: 10 acres

Mixed Pine Hardwood Salvage Thin: 35 acres

Pecan Orchard Salvage Clearcut: 165 acres

Misc.: 24 acres

UNCLASSIFIED



Lessons Learned



- Primary Watch Officers: Computers/ELMR
- Redundant Connectivity: DSL/Hot Spots
- MRAP as shelter/response
- ISSA: Moody AFB – Fuel and Chaplain Support
- Recall/Reentry: Emergency Personnel/ Mission Essential Personnel
- Enclaving
- Stand Alone GIS Platform in the EOC
- Disperse Fuel and Water Trucks
- Social Media Monitoring in the EOC
- Damage/Recovery Assessment Teams: Developing Engineering SOW
- Partnerships!!!



Round Two: Hurricane Michael



•Tornado 2017: (Jan)

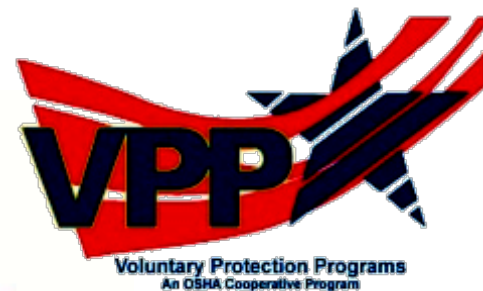
- Damage and repairs: Utilities \$11.5M, Facilities \$102.9M (DLA funded \$13.9M), Natural Resources \$4.2M.
- Completed: 100% Utilities and Natural Resources. 90% Facilities restored.
- Remaining work: B1260 Roof (Funded but not awarded), B1361 Roof (\$4.8M unfunded) and HVAC and interior repairs to multiple buildings (\$2M unfunded).
- In progress B1350, B1360 roofs, B1310 demolition, B1323 replacement, Warehouse interior work, and punchlist items.

•Hurricane Michael 2018: (Oct)

- Total dollar amount submitted for damage: Utilities \$3,659,806M (Received), Facilities \$45,886,605M (Unfunded)
- Funds Received and executed: \$1M for emergency repairs and \$3,659,806 for utility repairs
- Summary of Major repairs remaining: 50% Utilities (Mainly fiber optics, small portion electrical), 99% Facilities Damaged (1% repaired), Major work includes PPA roof and siding, weapons storage roof.
- Working with MIDLANT to award \$45,886,605M contract for permanent repairs.
- Currently NO funding allocated for storm recovery.



Questions





Headquarters 55th Wing



Association of Defense Communities

11 Feb 2020

Day **#333** since 15 Mar 2019 Flood



Lt Col Chris “Conman” Conover
Recover, Relocate, Restructure, & Rebuild



RC-135 V/W RIVET JOINT



RC-135U COMBAT SENT



OC-135B OPEN SKIES



RC-135S COBRA BALL

OFFUTT AFB

55th Wing Aircraft Variants



EC-130H COMPASS CALL



WC-135W/C CONSTANT PHOENIX



TC-135W (Fight Deck Trainer)

The Sun Never Sets...



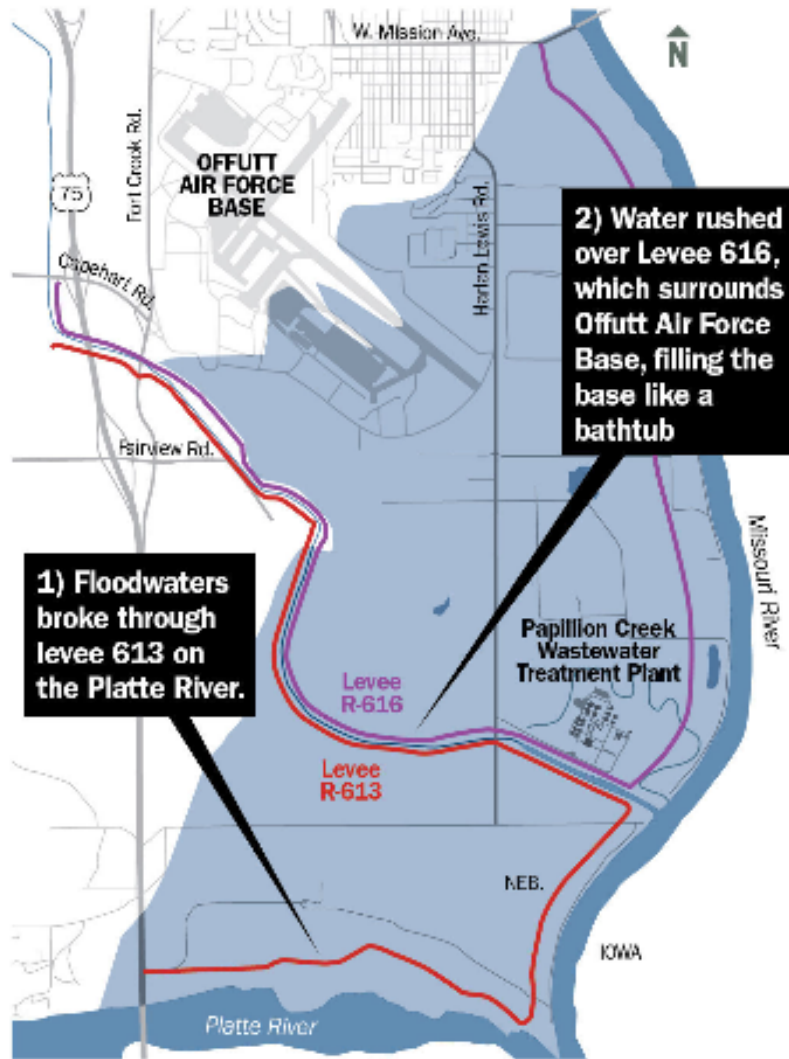
...On the Fightin' Fifty-Fifth



Disastrous and Historic Flooding

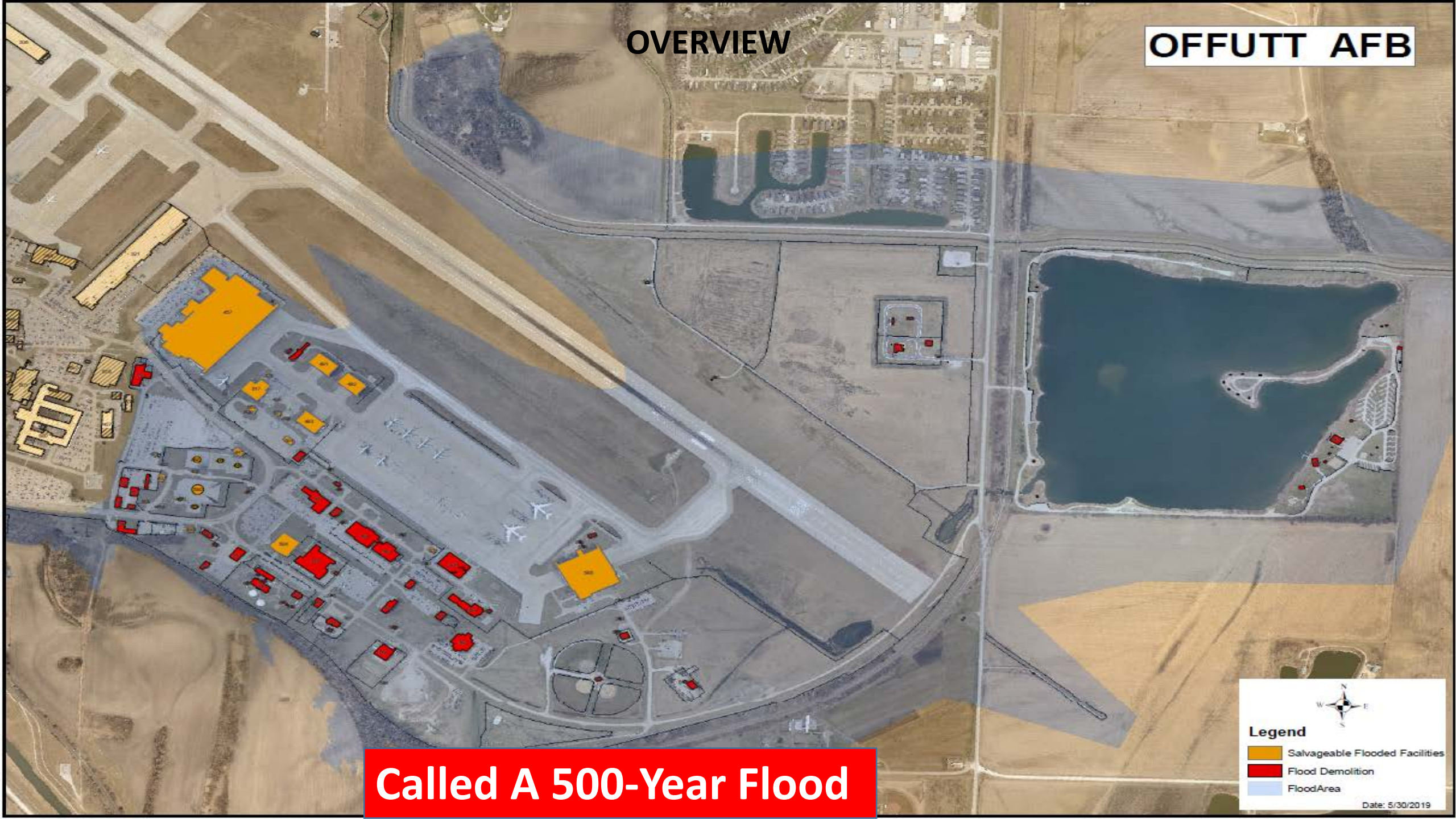


OFFUTT LEVEE OVERFLOWS



OVERVIEW

OFFUTT AFB



Called A 500-Year Flood

Legend

- Salvageable Flooded Facilities
- Flood Demolition
- FloodArea

Date: 5/30/2019

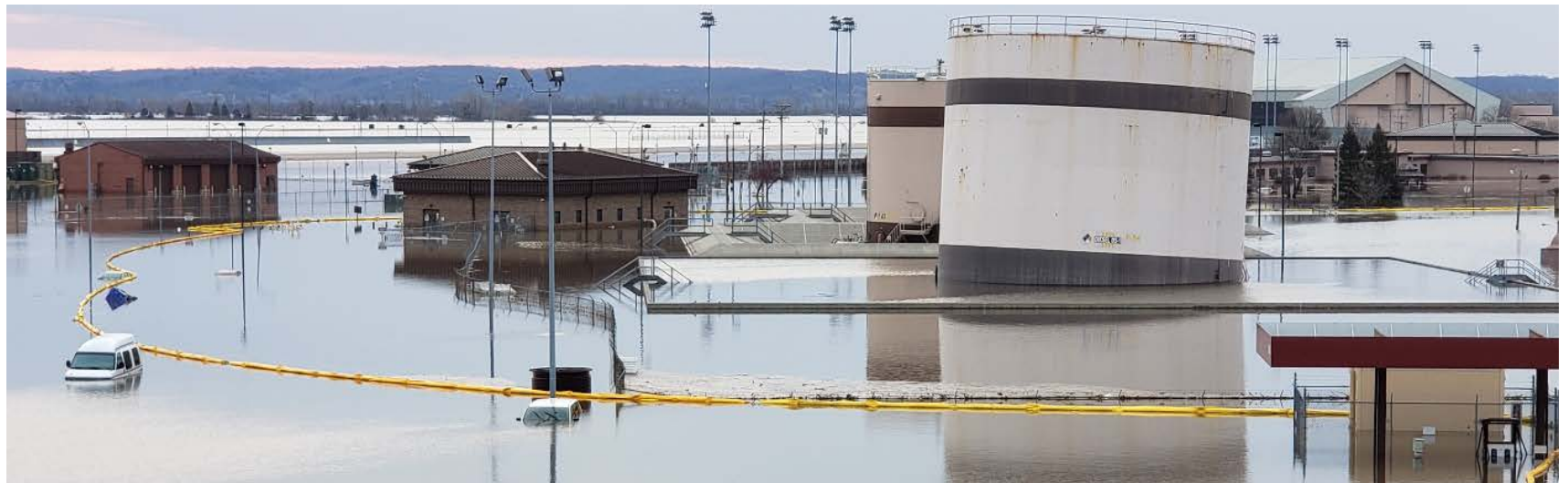


Disastrous and Historic Flooding Aerial View





Disastrous and Historic Flooding



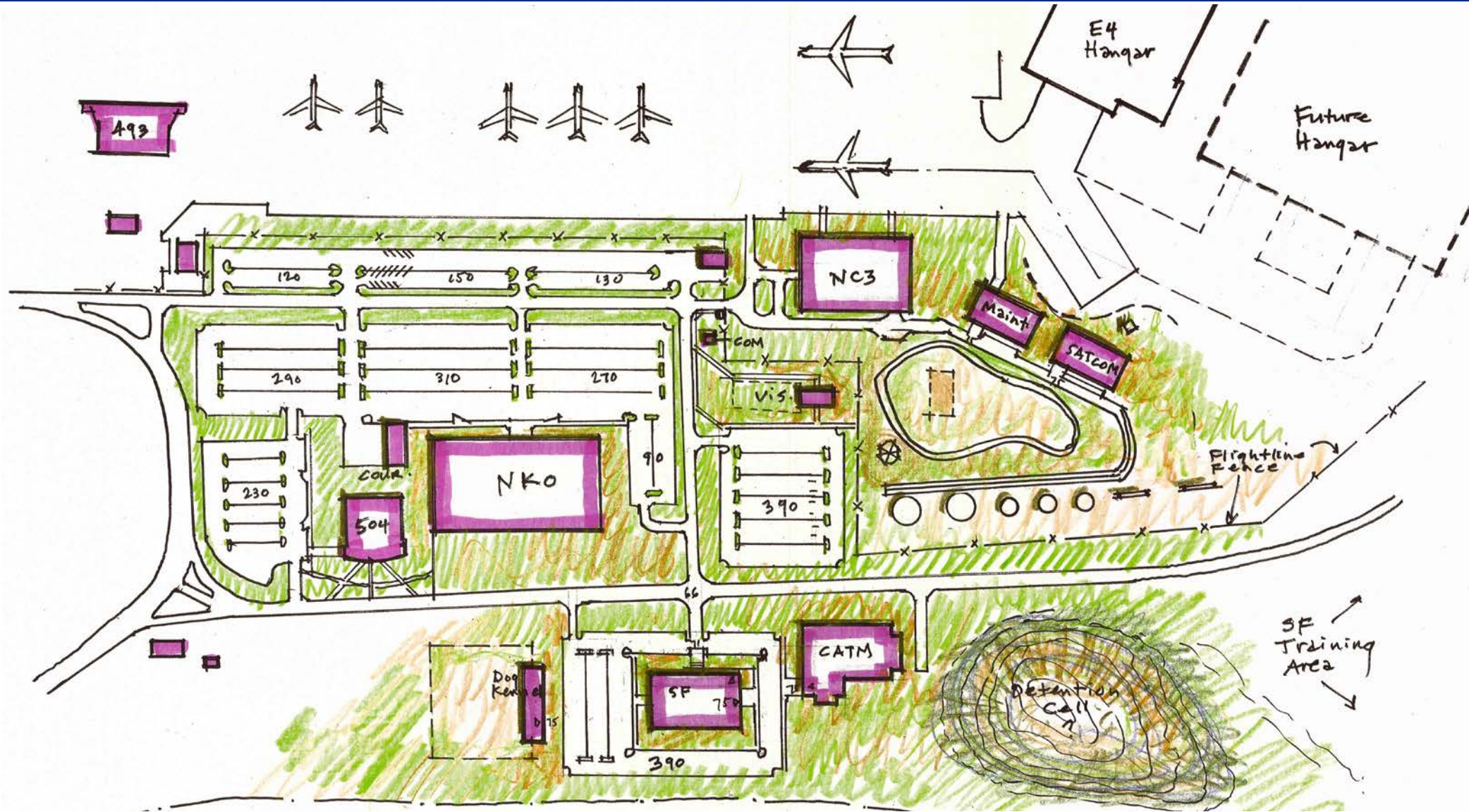


55 ISS (Home of Offutt's RC-135 Simulators)





Draft Rebuild Artistic Renderings





QUESTIONS?



"THE SUN NEVER SETS ON THE FIGHTIN' FIFTY FIFTH"