



INNOVATION LABORATORY

The Future of Joint Installation – Community Planning: Aberdeen Proving Ground and Harford County, Maryland

Karen Holt, Federal Installation Administrator,
Office of Community and Economic Development, Harford County, Md.

John Fink, Deputy Director, Directorate of Public Works,
U.S. Army Garrison, Aberdeen Proving Ground, Md.



WHAT IS THE CSSC?

- A multi-jurisdictional effort comprised of 50+ partner organizations
- Committed to supporting the mission of Aberdeen Proving Ground and the economic vitality of the region
- Named a Great American Defense Community in 2018
- Harford County is the lead agency (communication, grants administration)



WHAT IS A JLUS?



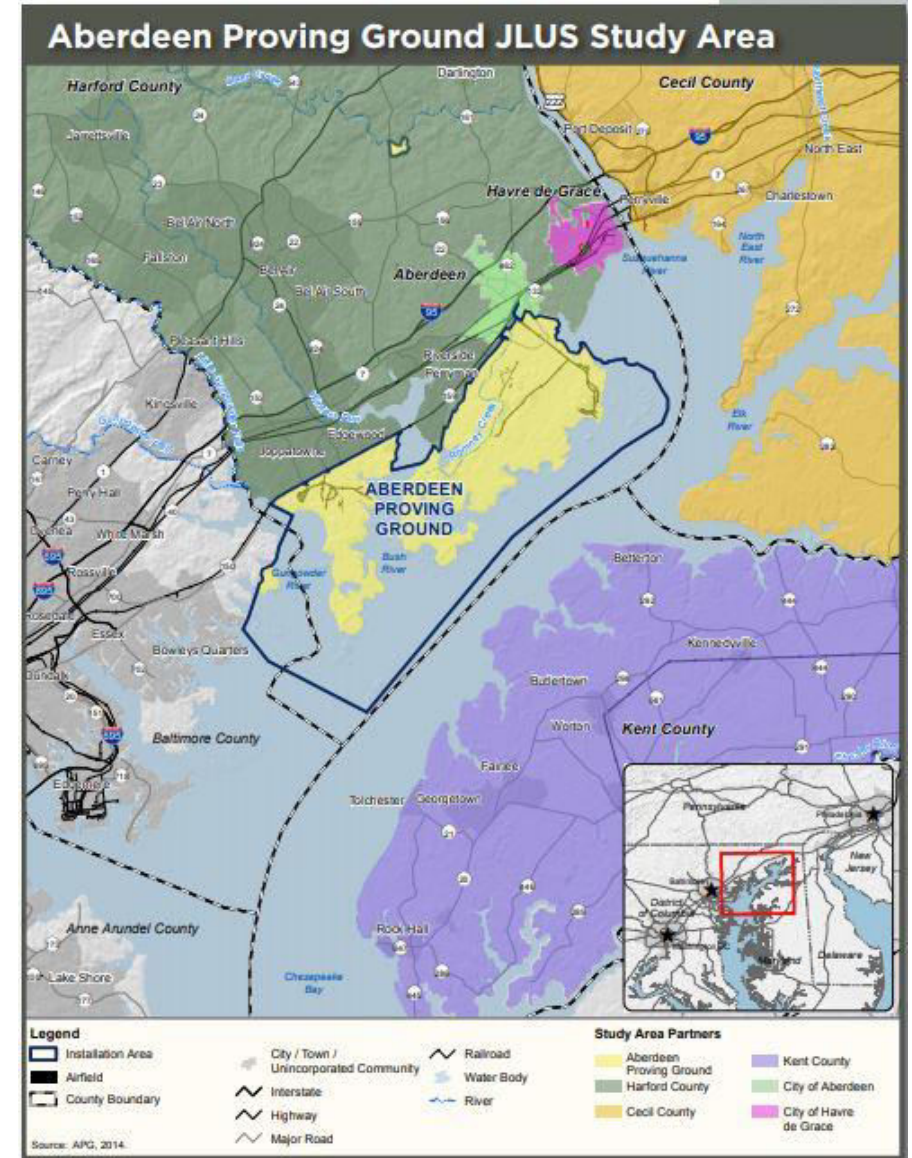
<https://vimeo.com/374488801>



WHAT IS A JLUS?

- A planning process accomplished through the collaborative efforts of stakeholders in a defined study area in order to identify compatible land uses and growth management practices in communities close to active military installations
- Stakeholders: local community, state, and federal officials, residents, business owners, nongovernmental organizations, and the military
- Intent is to foster and enhance an ongoing working relationship between Aberdeen Proving Ground (APG), federal and state agencies, neighboring jurisdictions, and local organizations

PARTNERS





INSTALLATION OVERVIEW

GEOGRAPHIC RESPONSIBILITY

- Areas of responsibility lie along the cyber corridor
- Distance
 - APG North to APG-South – 17 miles (31 Min)
 - APG North to Adelphi – 63 miles (1:45 hrs)
 - APG North to Blossom Point – 108 miles (2:30 hrs)



INSTALLATION FACTS

- Sixth largest employer in MD / largest in Harford County
- 19M SF of Building Space - 27% over 50 years old
- 2 Airfields
- Army's Premier Chem/Bio Surety Mission
- Sample Receipt Facility (SRF)
- Major Range and Test Facility Base (66,000 acres)
- Growing Maryland National Guard Presence
- Army's Largest Enhanced Use Leasing (EUL) Site (415 acres)
- Unique facilities for National Research & Development
- Underwater Explosives Pond (UNDEX): Environmentally friendly deep water test facility supporting Army & Navy (only one of its kind)

ENVIRONMENTAL ACTIVITIES

- One of the largest restoration programs in the Army
- Fragile Chesapeake Bay Ecosystem with 144 miles of shoreline
- Bald Eagle nesting reserve





ABERDEEN PROVING GROUND CORE MISSIONS

RESEARCH & DEVELOPMENT



Encroachment perceptions:

- Privacy Concerns (Aerostat – JLENS mission; UAV–ARL mission)

C5ISR

(Command, Control, Computers, Communications, Cyber, Intelligence, Surveillance, Reconnaissance)



Encroachment perceptions:

- Electromagnetic Field – Interference & Exposure

TEST & EVALUATION



Encroachment perceptions:

- Off-Post Infrastructure

Encroachment perceptions:

- Water Quality (Ground Water Contamination)
 - Safety – CAIRA Events

Encroachment perceptions:

- Transportation / roadway capacity
- Environmental Impact – Upstream Sediment Flow
- Safety – Aircraft Strike Hazards (APZs & BASH)

PUBLIC HEALTH SCIENCES



CHEM BIO

(Chemical & Biological)



USAGAPG

(Aberdeen Proving Ground Security)





PRE-JOINT LAND USE STUDY (JLUS)

Internal Assessment – through the APG lens:

- No local government zoning notification for adjacency development
 - Presented encroachment concerns (noise, land-use, force protection, etc..)
 - Vertical structures – impact to active airfields
- Lack of communication with municipal functional counterparts
 - No formal method to receive or communicate issues & concerns
 - Public Awareness
- Transportation Impacts
 - Mass transit onto the installation
- Sea Level Rise and associated loss of active range area

DoD, Office of Economic Adjustment – 2013 Pre-Assessment Conclusion:

- Mission sustainability **directly threatened** by: operational noise management, habitat & wetland preservation, and civilian land use
- Mission sustainability **may be threatened** by: traffic congestion, airfield activities and airspace use, frequency spectrum management, military-civilian communication and coordination, navigable waterways, and the adequacy of public facilities



JOINT LAND USE STUDY (JLUS)

Installation Support:

- **Directorate of Public Works, Master Planning staff served as the technical lead:**
 - Primary POC – liaison for APG tenants, and updating leadership
 - Set up site surveys of the Installation to familiarize the local government & public
- **Public Affairs, Community Relations Office served as community liaison:**
 - Community Liaison – supported leadership with all public workshops and public meetings
- **APG Tenants (100+):**
 - 9+ anchor tenants served as SME to articulate daily mission operation
 - Characterize the elements of military influence outside the installation boundaries and effects on the community
 - Scientists/Test Managers conducted demonstrations, including: RDT&E weapons testing, supercomputing, UAVs, robotics, 3-D printing, medical & non-medical CBRNE detection and protection
- **JLUS is not a regulatory document or an enforceable action, however, be cognizant of strategic messaging (call a-strike-a-strike & a-ball-a-ball)**
 - Installation engagement at this Phase is critical - allows for an opportunity to provide mission context, a counter-narrative, and fact check perceived encroachments



JOINT LAND USE STUDY (JLUS)

Implementation Phase:

Major APG Outputs:

- Sea Level Rise Study & Surge Modeling
- Notification to local government of development within 1,000 ft. boundary line (planning and NEPA)
- Restoration Advisory Board
- Traffic Impact Study – assessment of both the Installation and Surrounding Communities
- Solicit local government input to RPPB, Master Plan development, to improve compatibility

Major Community Outputs:

- Update Maryland Real Estate Disclosure Narratives
- Established Regional Quarterly Planning Forum (to discuss zoning, best practices, issues & concerns)
- Zoning notification sent in timely manner to designated Installation POC
- Major Groups – Communications



JOINT LAND USE STUDY (JLUS)

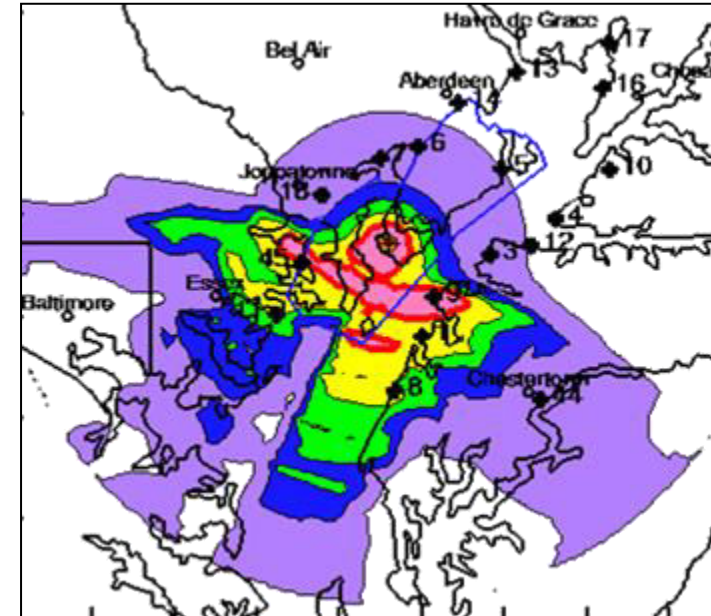
Path Forward:

- **Leverage funding opportunities through DoD's Readiness and Environmental Protection Integration Program**
 - Key Capabilities identified in the National Defense Strategy
- **Sea Level Rise Study**
 - Establish working group to discuss mitigation strategies and best management practices (shoreline stabilization, shoreline armoring, elevated development, no build zones, etc.)
- **Continue established channels of communication**
 - Public Affairs, Restoration Advisory Board, Maryland Military Council, etc
- **Continue supporting Harford County Government's DoD OEA funded initiatives**
 - Shift focus from project studies to project execution



ARMY COMPATIBLE USE BUFFER PROGRAM (ACUB)

- Readiness and Environmental Protection Integration (REPI) allows DoD to partner with land conservation groups to protect adjacent land to **prevent mission incompatible land uses**
- Incompatible development and loss of habitat around military installations can lead to testing and training restrictions
- APG's ACUB proposal was approved by ACSIM in 2012
- The proposal included:
 - high potential operational noise contours
 - relieving regulatory restrictions under the Clean Water Act and Coastal Zone Management Act



Noise Contours from
APG Test Mission



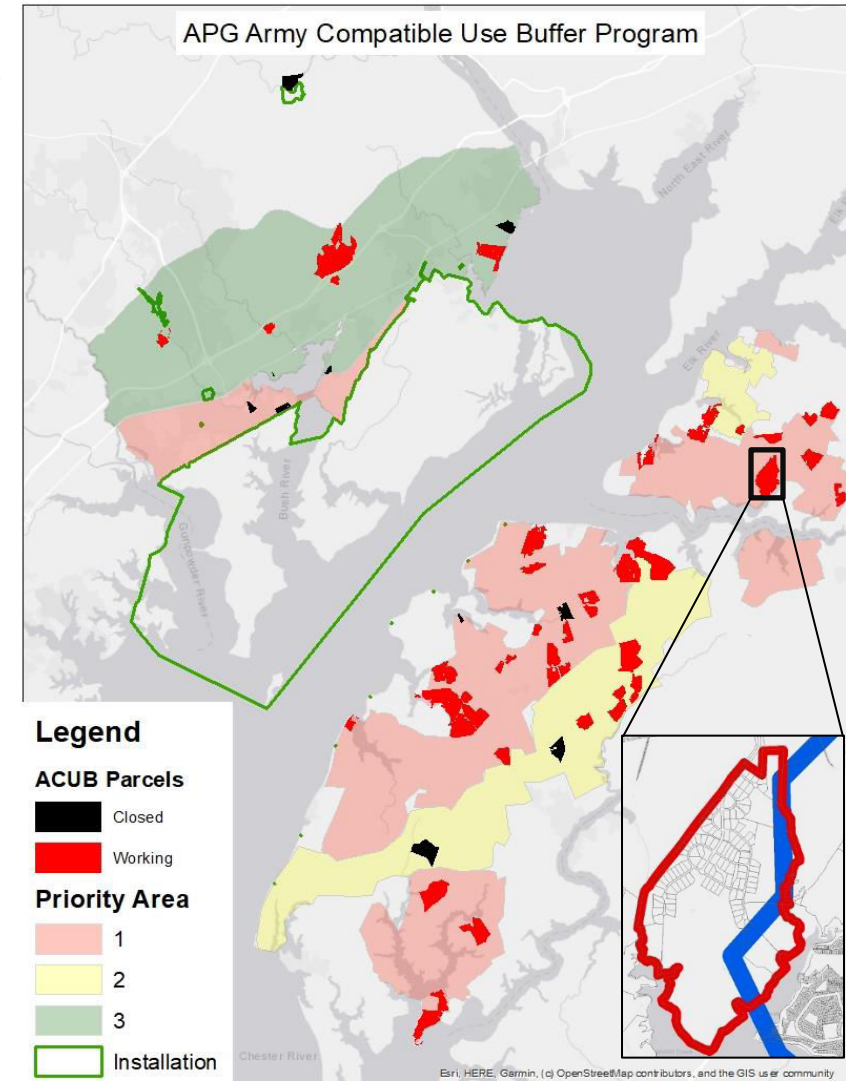
ARMY COMPATIBLE USE BUFFER PROGRAM (ACUB)

Funding Sources:

- Installation – programmed or end of year
 - \$150k cap for Garrison funds
- Army Environmental Command
 - programmed or End of Year
- REPI
 - End of Year
 - Annual proposal process
 - REPI Challenge (Larger parcels)

APG Success:

- Executed \$10M of combined Army, REPI and partner matching funding
- Protected 1,000 acres
- Military/Partner share is 75:25





THE JLUS PROJECT



Working with an Eagle Population

<https://vimeo.com/374519783>



THE JLUS PROJECT

- Proactive Approach to coordinated growth efforts, awareness
- Formalized processes for smooth transitions across leadership changes both inside and outside the gate
- Overall communication enhancement



CHALLENGES AND SUCCESSES



THE JLUS PROJECT



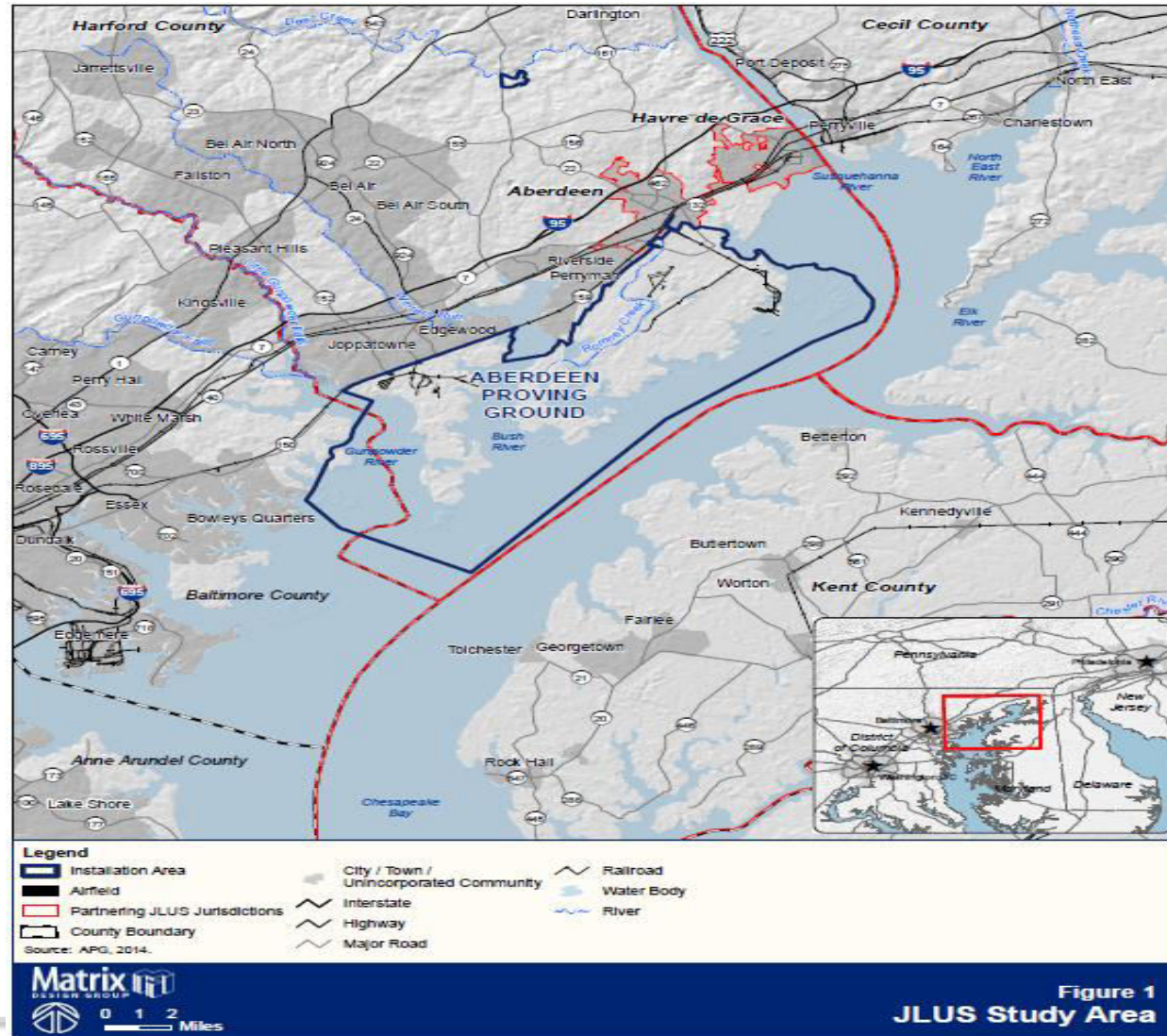
Living in a Defense Community

<https://vimeo.com/374689408>



JLUS Study Area

Backup Materials





CONTACT US

Karen Holt, Federal Installation Administrator & CSSC Coordinator

klholt@harfordcountymd.gov

410-638-3058

John Fink, Deputy Director, DPW, U.S. Army Garrison, APG

John.m.fink6.civ@mail.mil

410-306-1103

Please visit <https://apg-chesapeakejlus.com> for more information on the JLUS project and to see all the videos!