

# Tyndall AFB & Camp Lejeune: Installations Rebuilding for the Future

*What happened?*



# Hurricane Michael – 10 October 2018



**10 Oct 18, 1230 CDT – CAT 5 Hurricane landfall**  
**Maximum sustained winds of 161 mph**  
**Storm surge: 9 – 14 ft at Mexico Beach**

# Community Status: Post-Storm

- ✓ **Displaced:** 20,000 residents (County estimates)
- ✓ **Homes:** 69% residential homes damaged (Panama City)
- ✓ **Businesses:** 80% of the businesses along Tyndall Parkway 3.5 mile corridor, severely damaged or destroyed.
- ✓ **COM:** Zero telecommunications, public cable and internet service impacting recovery.
- ✓ **Hospitals:** 322-bed and 216-bed medical centers substantially damaged – patients diverted 50-100 miles.
- ✓ **Schools:** Three schools closed permanently, (13% of students never returned)
- ✓ **Rebuild Factor:** Defense=1/3 economy, \$3 billion annually; many business and property owners not reinvesting until Tyndall rebuild is secure.



# ***Marine Corps Installations East***



## ***Hurricane Florence Impact and Recovery***



UNCLASSIFIED//FOR OFFICIAL USE ONLY

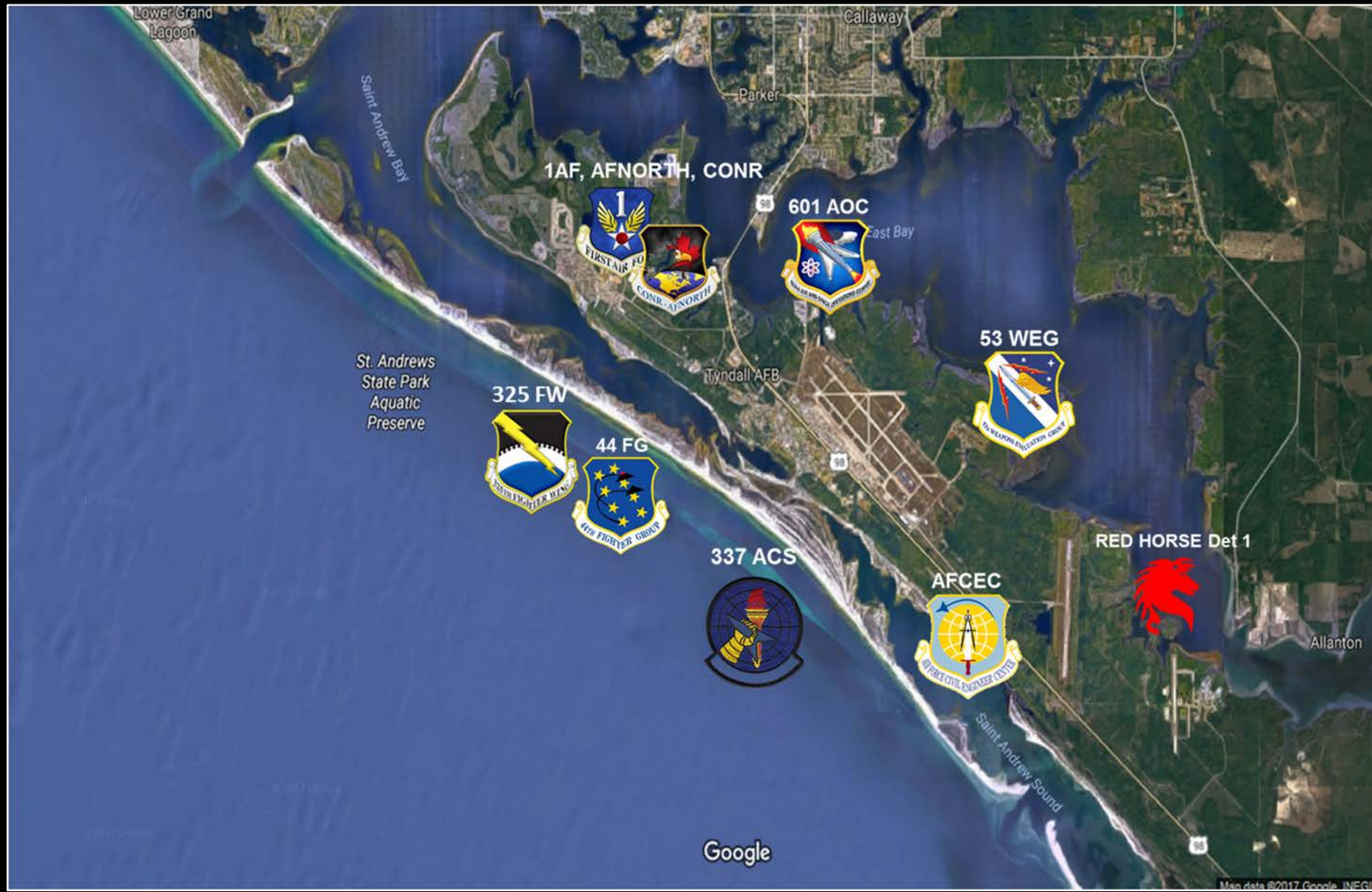
# Tyndall AFB & Camp Lejeune: Installations Rebuilding for the Future

*What is going on now?*



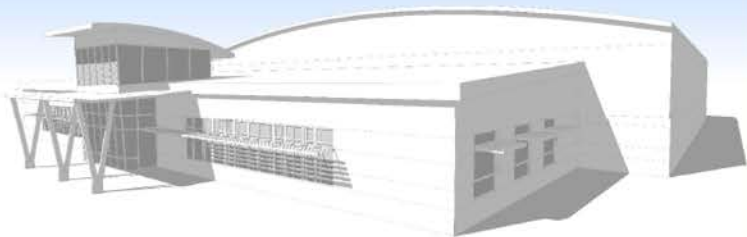
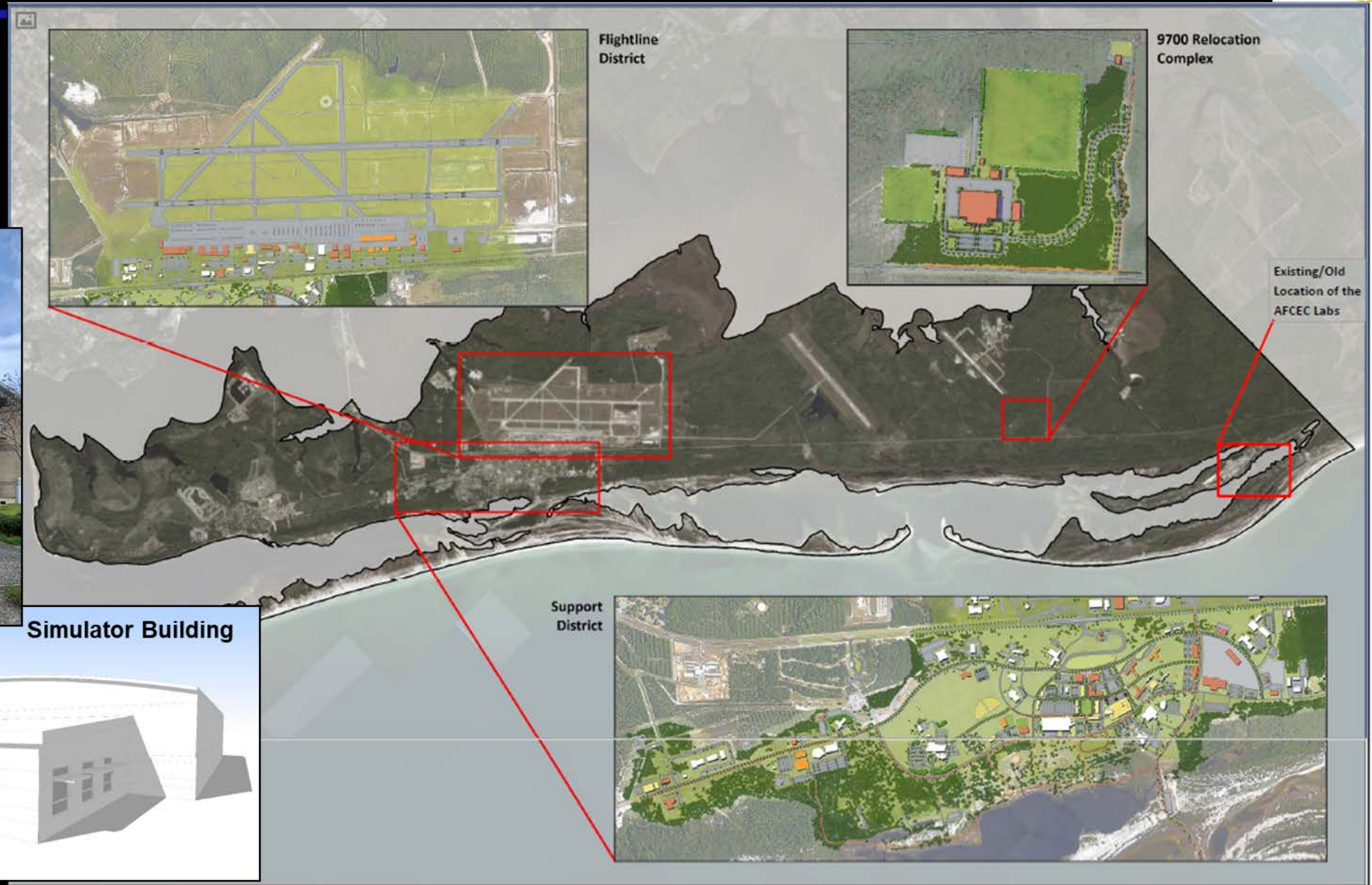
# Tyndall Air Force Base

## What's going on now?





# Tyndall's Master Plan



# Community Snapshot 2020

- ✓ **Communication:** scheduled bi-monthly communication between Installation and community leadership / CODEL.
- ✓ **EIS Underway:** 1<sup>st</sup> public scoping session December 10, includes F-35 and MQ-9 in one process
- ✓ **Municipality Recovery:** Financial and operational Status of small cities; grant pursued to facilitate community/base alignment
- ✓ **JLUS:** ICEMAP and AICUZ studies completed in recent years, and recently began a JLUS (CUP) ;
- ✓ **Emergency Supplemental:** Secured 4 June 2019; balance of rebuild funding secured 20 December 2019;
- ✓ **Community Relience:** USAF needs assurance on issues of housing, schools, quality of life issues.
- ✓ **Schools:** K-8 School approved – on installation.
- ✓ **Housing:** the county has assisted researching verifiable data on housing recovery.



**Marine Corps  
Installations  
East**

# MCIEAST Recovery



I MEF HQ Bldg



New River CNATT Applied Instruction Facility



***Marine Corps  
Installations  
East***

# MCIEAST Recovery



Camp Geiger Open Squad Bay Barracks



Expeditionary Billeting Building DD8  
Interior



**Marine Corps  
Installations  
East**

# MCIEAST Recovery



North Wallace Creek Training Area



October 9, 2019  
+34.617858, -77.472711  
Camp Lejeune  
Old Wilmington rd  
CL 0026

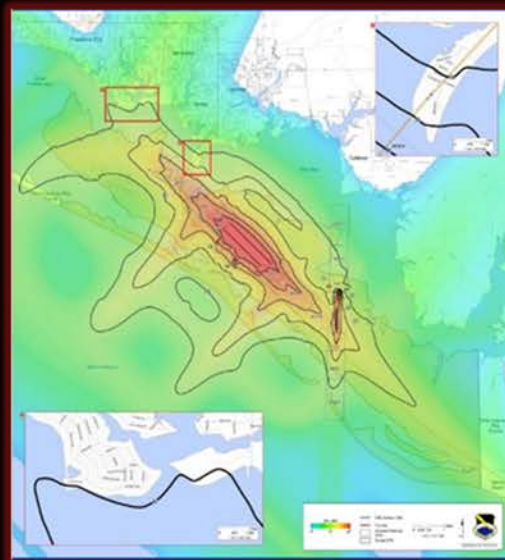
Old Wilmington Highway Stormwater  
Drainage

# Tyndall AFB & Camp Lejeune: Installations Rebuilding for the Future

*What next?*



# What's next for Tyndall?



# Housing Recovery

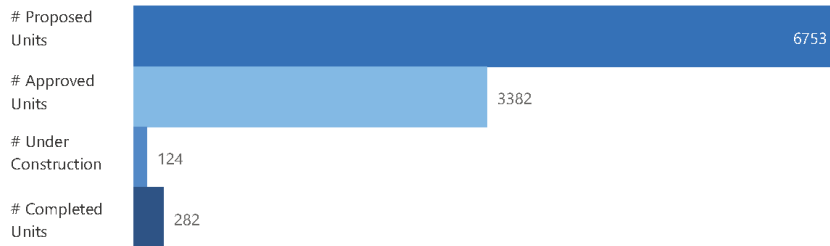
## Bay County Housing Development Pipeline

Last Update: 12/27/2019 8:00 AM

HAGERTY

### Single Family Housing Development

Proposed Developments	# Proposed Units	# Completed Units
37	6753	282



### Multi-Family Housing Development

Proposed Developments	# Proposed Units	# Completed Units
22	3906	29



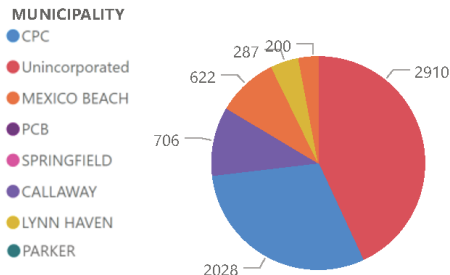
### Market Rate Developments

35

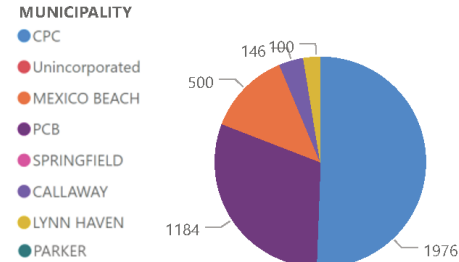
### Workforce Developments

2

### Single Family Proposed Units by Municipality



### Multi-Family Proposed Units by Municipality



### Market Rate Developments

16

### Affordable Developments

6