



REPI

UNITED STATES DEPARTMENT OF DEFENSE
READINESS AND ENVIRONMENTAL PROTECTION INTEGRATION PROGRAM

Innovation Laboratory: *Meeting the Readiness and Resilience Challenge at NSB Kings Bay*

February 10, 2020

ADC Installation Innovation Forum



Panel Members



Moderator: Andy Porth

Assistant Director Posture, OASD(Sustainment)



Russ Byrd, AICP

Community Planning Liaison Officer, NSB Kings Bay

Anne Flinn

Director of Land Protection, The Nature Conservancy in Georgia



Steve Friedman

Chief of Real Estate, Georgia Department of Natural Resources

The Department of Defense's Readiness and Environmental Protection Integration (REPI) Program is a key tool for promoting innovative and land conservation partnerships that benefit national defense, neighboring communities and the environment.

Parachute training is halted when housing developments are built near drop sites



Realistic combat training, pristine test environments, and operational capability are keys to keeping our service members safe. However, encroachment issues are creating obstacles that threaten military activities.



Flight testing, training, and operations are impeded by cellphone towers, wind farms, and developments

80% of military bases have surrounding development that is higher than the national average



Weapons testing and training causes noise, dust, and smoke complaints from nearby communities



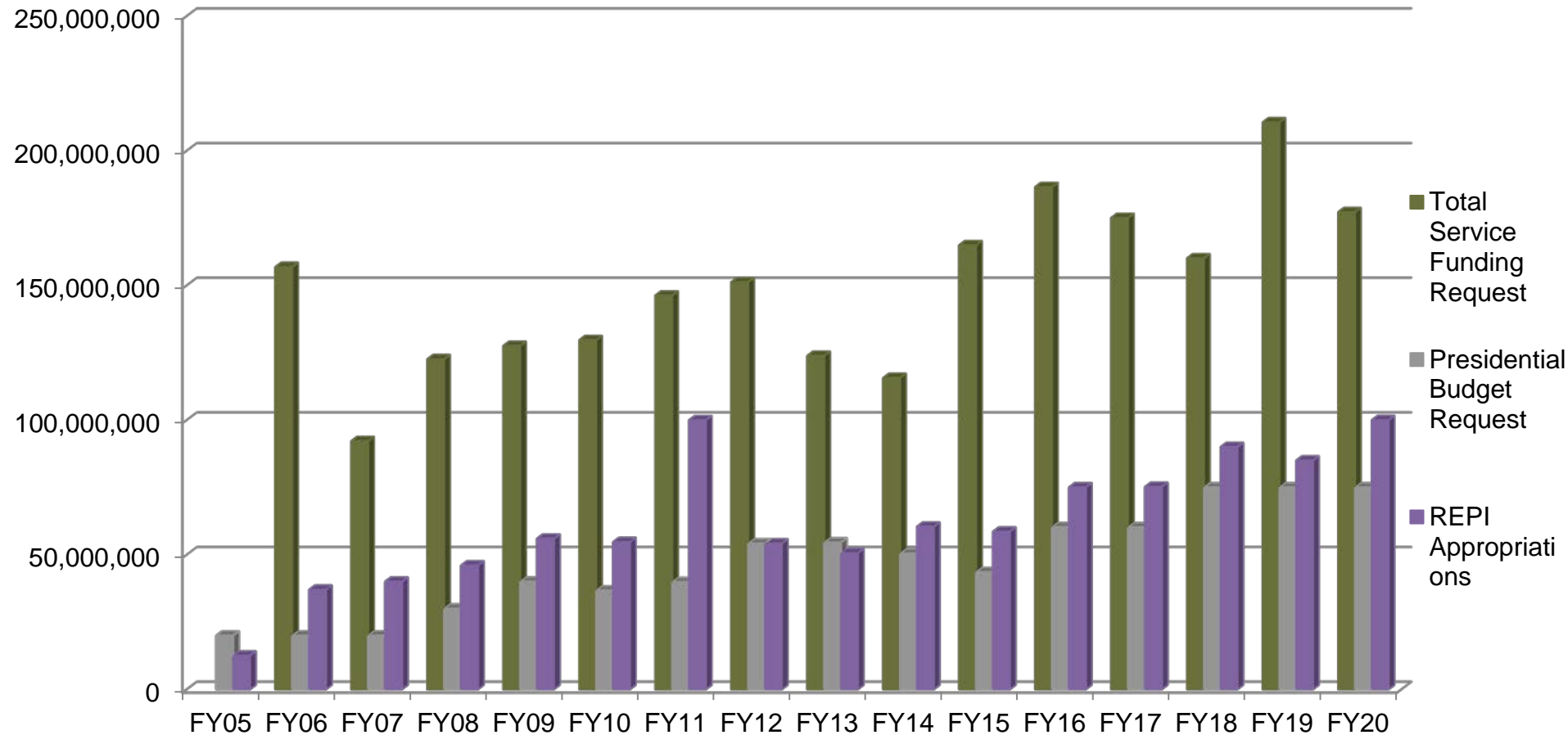
Night training is compromised when light pollution from nearby commercial areas spreads

Urban sprawl decreases habitat and may cause Federally protected species to seek sanctuary on military lands





REPI Funding



*Through FY 2018, **\$857 million in DoD funds** have been leveraged with **\$788 million in partner funds** under the REPI authority*

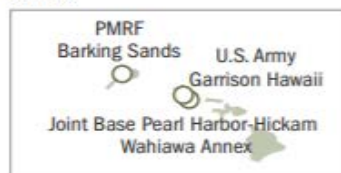
*Through FY 2018, the REPI Program has protected over **586,000 acres** to preserve or enhance military test, training, and operational capabilities at **106 installations** in **33 states***



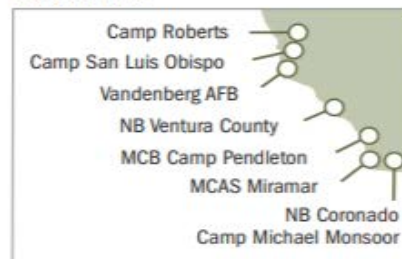
Alaska:



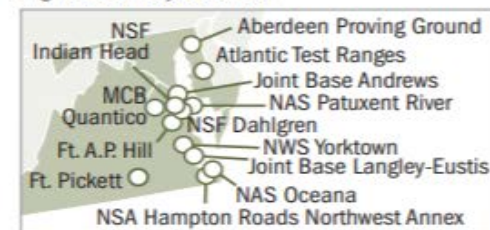
Hawaii:



California Inset:



Virginia and Maryland Inset:





Russ Byrd

Community Planning Liaison Officer
Naval Submarine Base Kings Bay

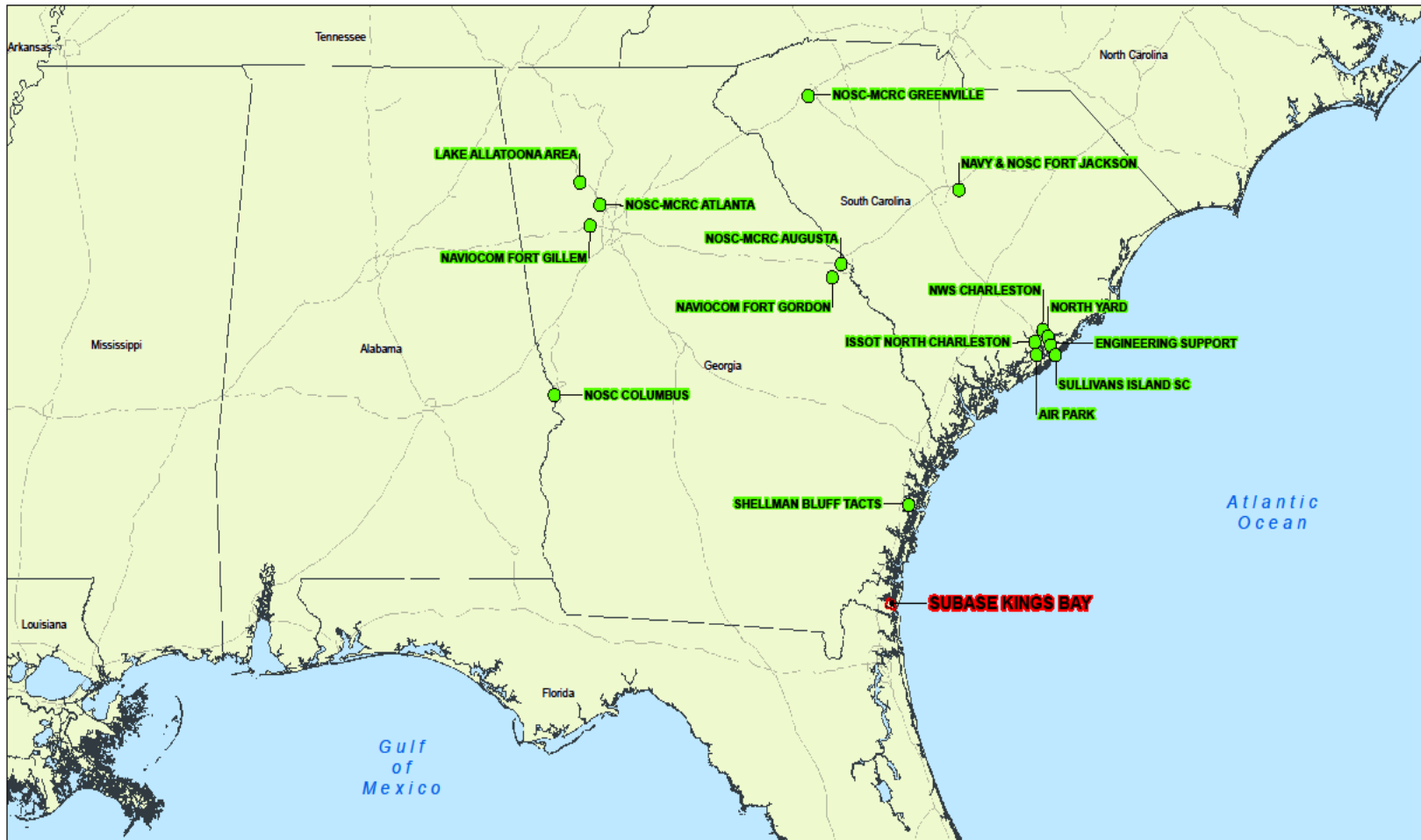
Welcome to Naval Submarine Base Kings Bay

Providing Support to the Fleet, Fighter and Family



Welcome to Naval Submarine Base Kings Bay

Providing Support to the Fleet, Fighter and Family



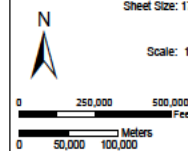
SUBASE Kings Bay & Special Areas

Legend

- Special Area
- Roads
- SUBASE Kings Bay
- States
- Water

Coordinate System: World Geodetic System
Datum: WGS84
Sheet Size: 17" W x 11" H

Scale: 1:3,800,000



PREPARED BY:



Date: 4/9/2013
Naval Facilities Engineering
Command Southeast
Asset Utilization Branch, AM4
Contact: Joshua Coates
(912) 573-0096

FOR OFFICIAL USE ONLY

This map and data contained herein is For Official Use Only. All data shown is considered Unclassified Sensitive upon Aggregation. Reproduction, distribution, publication, or exhibition of this data is strictly prohibited without the written consent of the Commander Navy Region Southeast GeoReadiness Center. CNRSE GeoReadiness Center does not attest to or guarantee the currency and/or validity of the data contained in this map, nor does it attest to any spatial accuracy. This map is for planning purposes only.

America's Submarine Force



Submarines

51 SSNs
 14 SSBNs (6 in Kings Bay)
 4 SSGNs (2 in Kings Bay)

Manpower

Total: ~24,500
 Officer: ~2,500
 Enlisted: ~18,000
 Civilian/Reservists: ~4,000

Highly Leveraged Assets

~6% of Navy personnel
 ~25% of warships
 ~15% of Navy budget
 ~70% of accountable nuclear warheads
 100% of survivable warheads



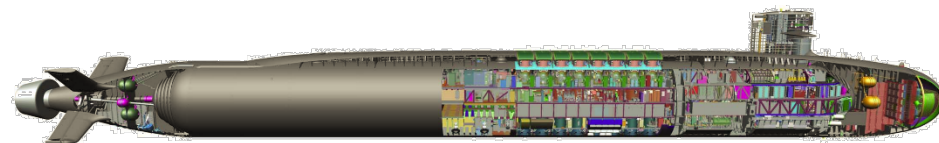
Strategic Deterrence

OHIO Class



- Sea Based Strategic Deterrence
- Only survivable leg of nuclear TRIAD
- ~70% of accountable nuclear warheads
- Preventing major power war for the last 7 decades

COLUMBIA Class



- 12 SSBNs Replace 14: Survivability; Geography; Target Coverage
- Efficient: Strategic Weapons System; D5-LE; SWFTS; Acoustic Superiority
- New: 42-year Reactor
- Value: SBSD ~1% total DoD Budget; On Patrol Through 2080s; Still ~70%

“... foundational to our survival as a nation.” – Navy Design



Commander Submarine Group 10

COMSUBRON 20

USS Tennessee (SSBN 734)	Arrival Date March 1990
USS West Virginia (SSBN 736)	September 1991
USS Maryland (SSBN 738)	May 1993
USS Rhode Island (SSBN 740)	June 1995
USS Wyoming (SSBN 742)	August 1997
USS Alaska (SSBN 732)	April 2009

COMSUBRON 16

USS Florida (SSGN 728)	May 2006
USS Georgia (SSGN 729)	March 2008





PPV Housing/Golf Course

Waterfront Restricted Area

Upper Base

Controlled Area

NSB Kings Bay

Annual Economic Impact:

\$1.142 Billion

An aerial photograph of the waterfront area at Naval Station Kings Bay. The image shows a large body of water in the upper half, with a dark, narrow channel or inlet. Along the shoreline, there are several large, light-colored industrial or military buildings, some with flat roofs. There are also parking lots filled with vehicles, and areas of green vegetation. The land appears to be a mix of developed areas and natural terrain. The overall scene depicts a complex waterfront area with various structures and land use.

NSB Kings Bay

Resiliency Challenges

- Incompatible Development
- Competition for Land, Sea, & Air Space
- Threatened and Endangered Species
- Sea Level Rise/Flooding Events

Photo: Waterfront Restricted Area at Naval Station Kings Bay



NSB Kings Bay

Resiliency Efforts

- Community Planning Liaison Officer
- Utility Resiliency
- Environmental Management Strategies
- Active REPI program

NSB Kings Bay *REPI Program*







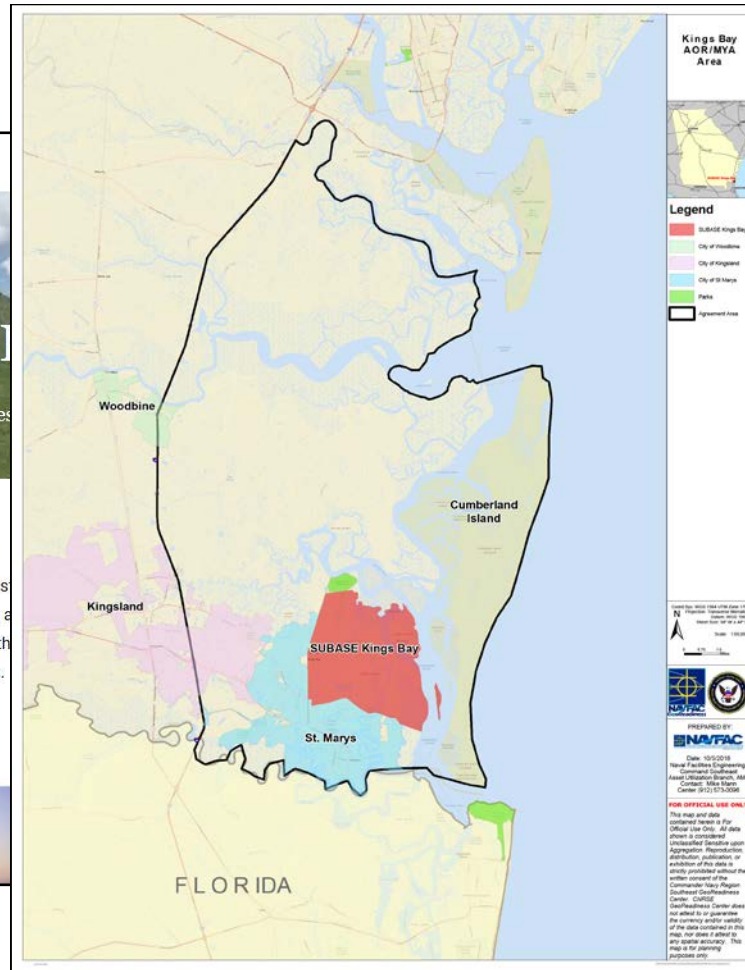
THE SENTINEL LANDSCAPES PARTNERSHIP

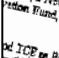
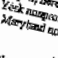
Where defense, agriculture, and conservation communities

Who We Are

The Sentinel Landscapes Partnership is a coalition of federal agencies, state and private landowners to advance sustainable land management practices across the Department of Defense, Department of Agriculture, and Department of the Interior programs that support defense, conservation, and agricultural missions.

What We Do

MODIFICATION NO. 28

NSA450-05-367-0001

INVOLVED CONTACT US

MODIFICATION TO PROTECTIVE AGREEMENT BETWEEN THE UNITED STATES OF AMERICA AND THE STATE OF GEORGIA AND NATURE CONSERVANCY

The Department of Defense, Department of the Interior, and the State of Georgia, by and through the United States of America and the State of Georgia, and is effective on the day and year last indicated below:

PURPOSE AND AUTHORITY

Additional obligations continue. The first sentence is replaced by the following sentence:

944. This agreement, hereinafter the "Agreement," is made by and through the United States of America, and the State of Georgia, by the Georgia Chapter, hereinafter called "Georgia Chapter," a New York nonprofit corporation, and the Maryland Chapter, hereinafter called "Maryland Chapter," a Maryland nonprofit corporation.

and TCF as Parties to the Agreement. The authority and replaced by the following:

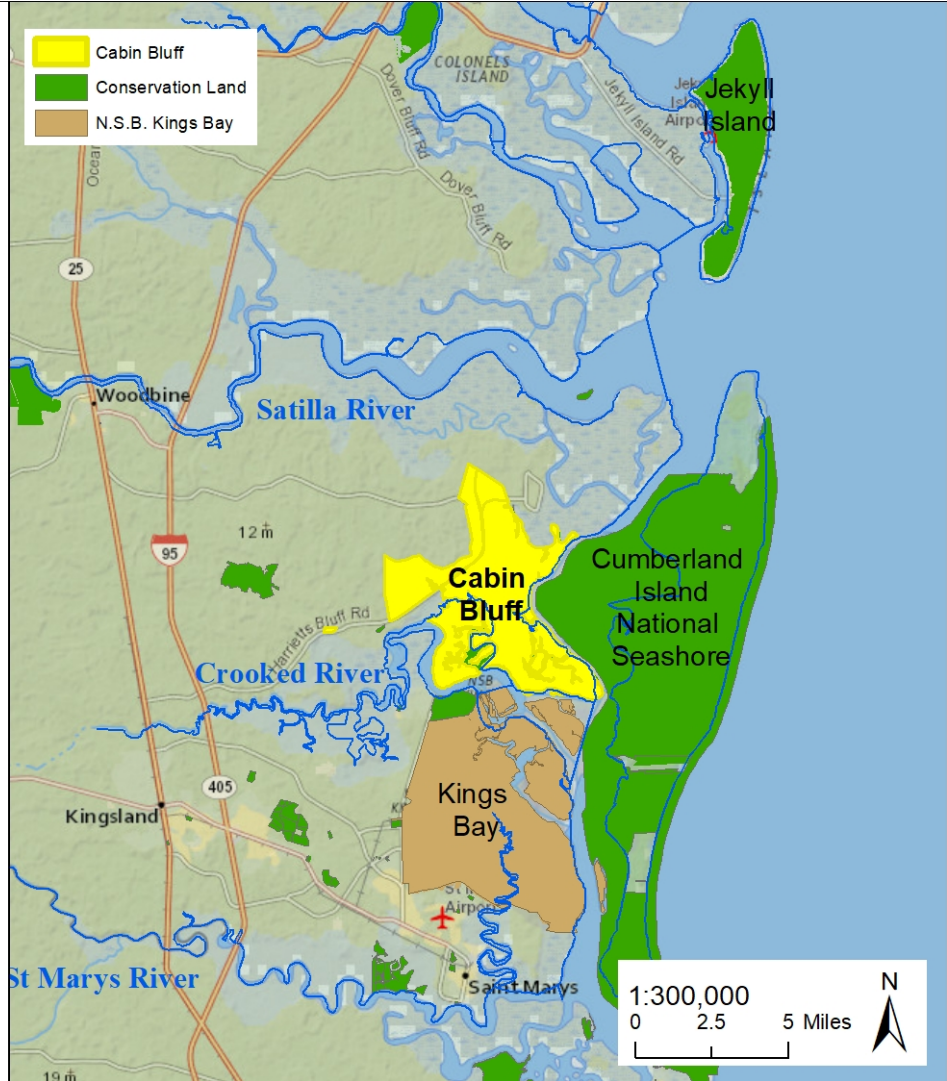
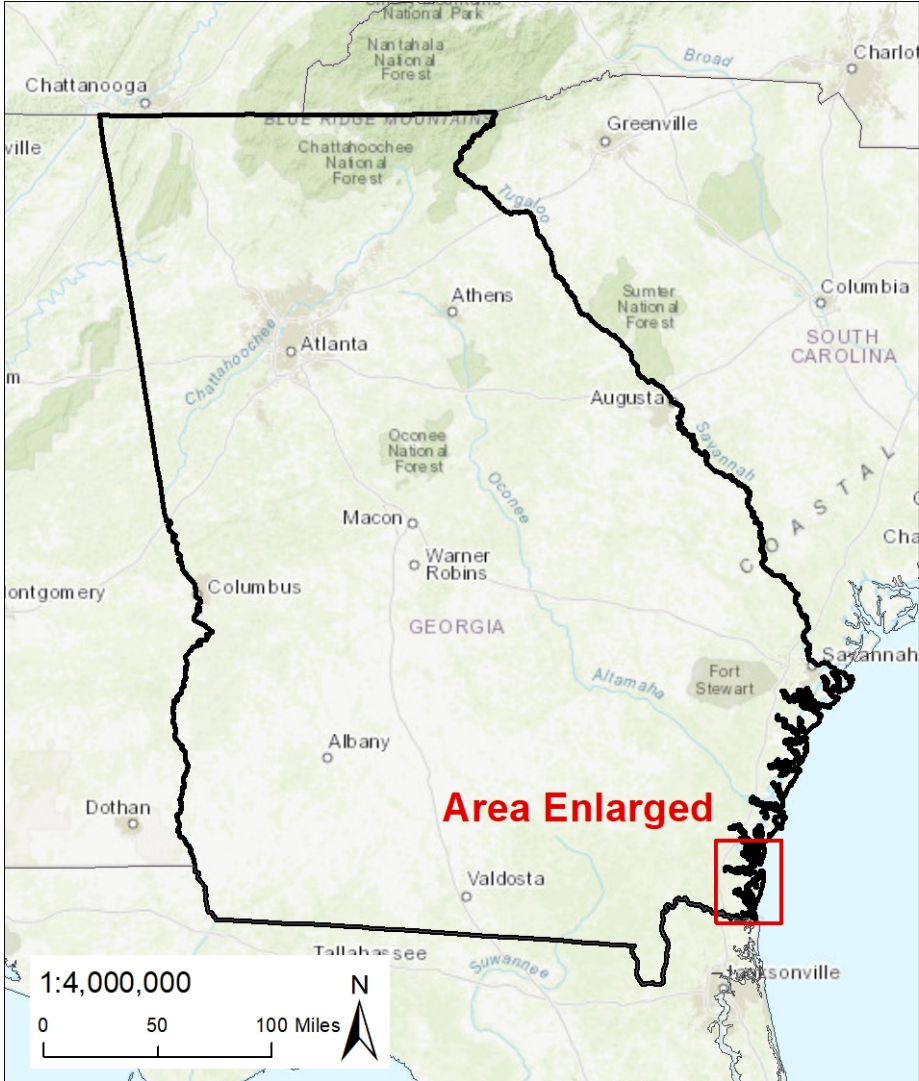
OSILT, and TCF, and any additional parties referred to as the Parties, whose signatures are hereinafter referred to as a

OSILT and TCF and shall be referred to as the United States of America and the Georgia Chapter and the Maryland Chapter.



Anne Flinn

Director of Land Protection
The Nature Conservancy in Georgia









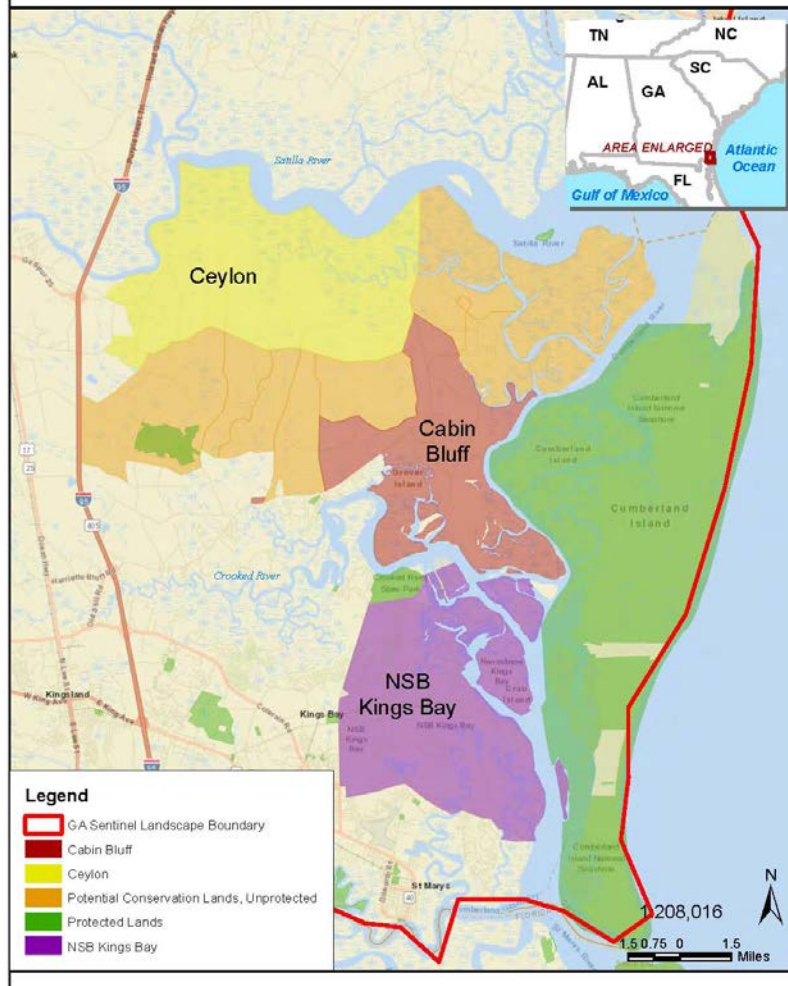






Cabin Bluff: A strategic conservation asset for sustaining NSB Kings Bay

2019 REPI Challenge Grant Recipient

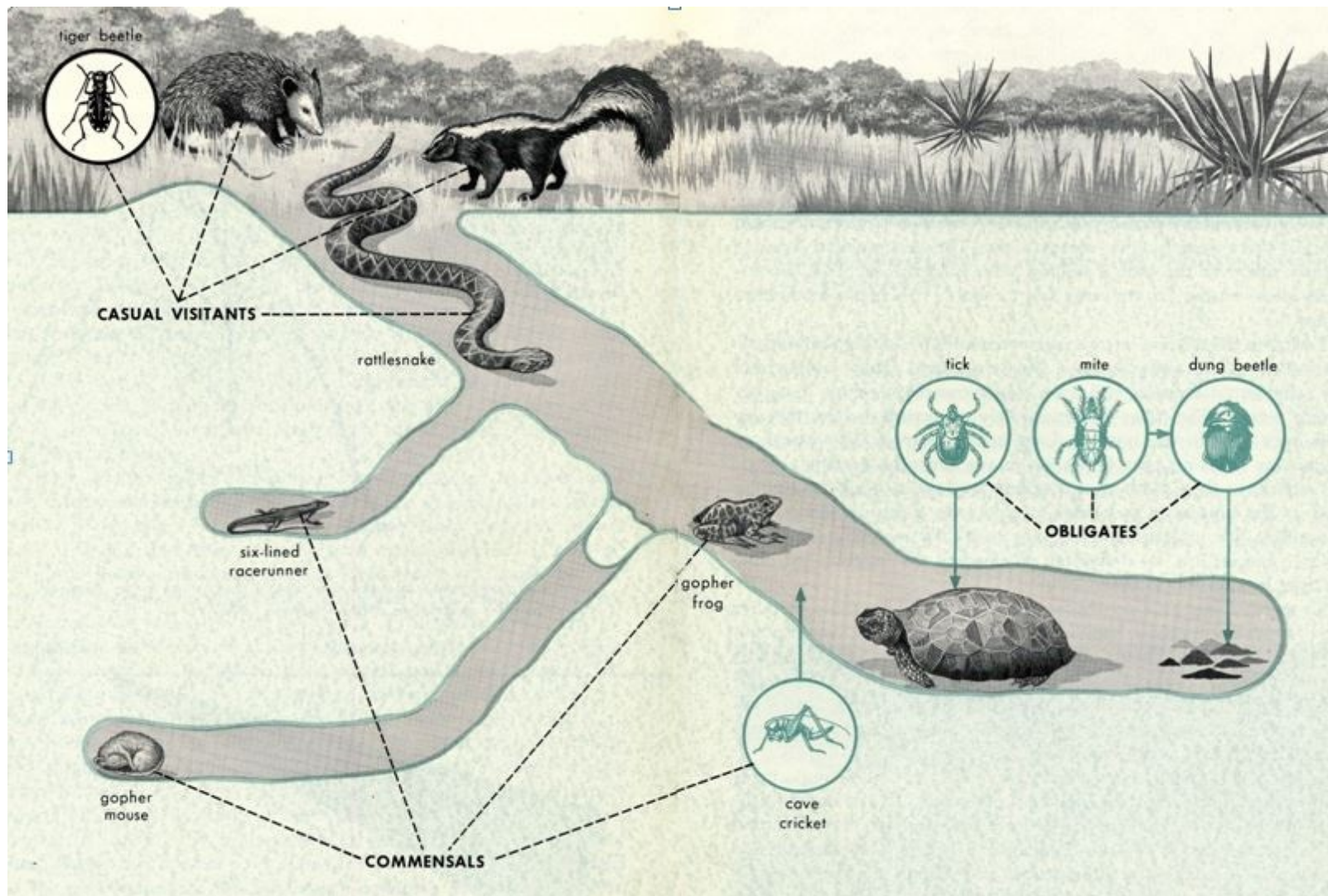




Steve Friedman

Chief of Real Estate
Georgia Department of Natural Resources







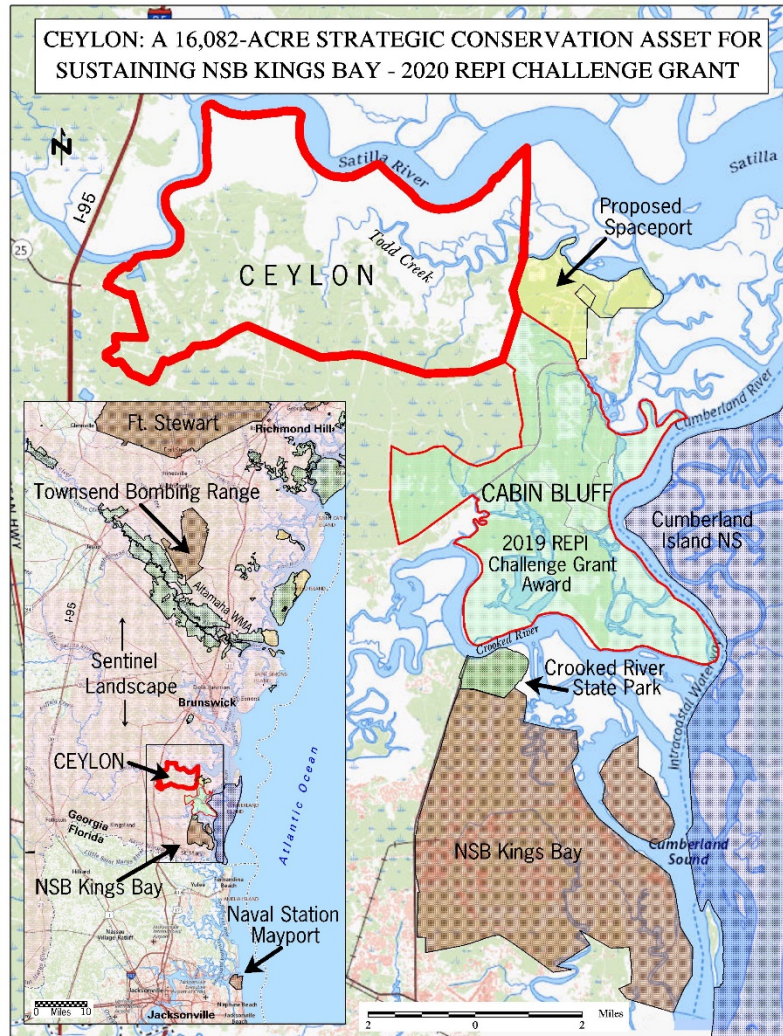








CEYLON: A 16,082-ACRE STRATEGIC CONSERVATION ASSET FOR
SUSTAINING NSB KINGS BAY - 2020 REPI CHALLENGE GRANT





Q&A



Moderator: Andy Porth

Assistant Director Posture, OASD(Sustainment)



Russ Byrd, AICP

Community Planning Liaison Officer, NSB Kings Bay

Anne Flinn

Director of Land Protection, The Nature Conservancy in Georgia



Steve Friedman

Chief of Real Estate, Georgia Department of Natural Resources



*For more information, visit **www.REPI.mil***



Save the Date

AUGUST
10-13 | 2020

San Antonio, TX



Sustaining Military Readiness Conference

Restoring Readiness Through
Planning and Partnerships

Join your colleagues to share lessons learned and best practices to
support and enhance military readiness.