

Lynette M. Fraga, PhD

Executive Director

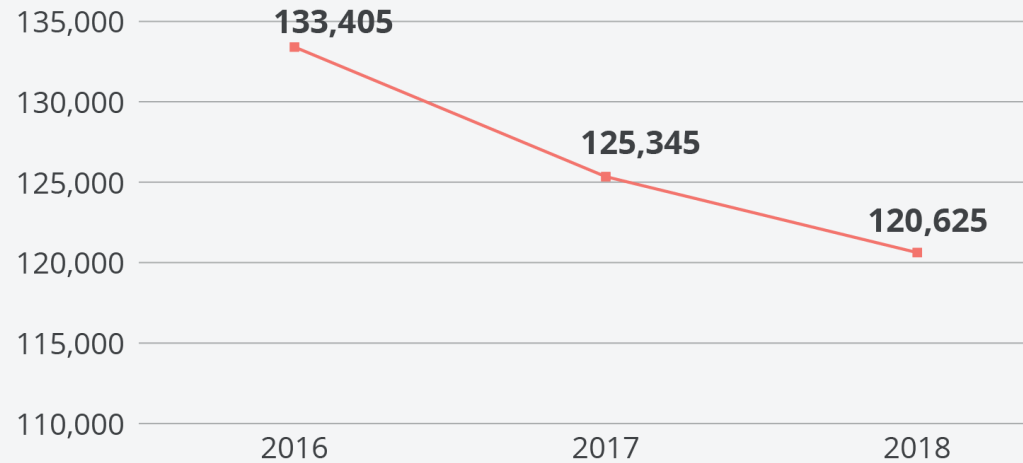


Child Care Aware® of America connects innovative solutions to the child care crisis.

We are in crisis.

Loss of Family Child Care Providers, 2016 to 2018*

*Based on data from 41 states



2016 Early Childhood Program Participation Survey

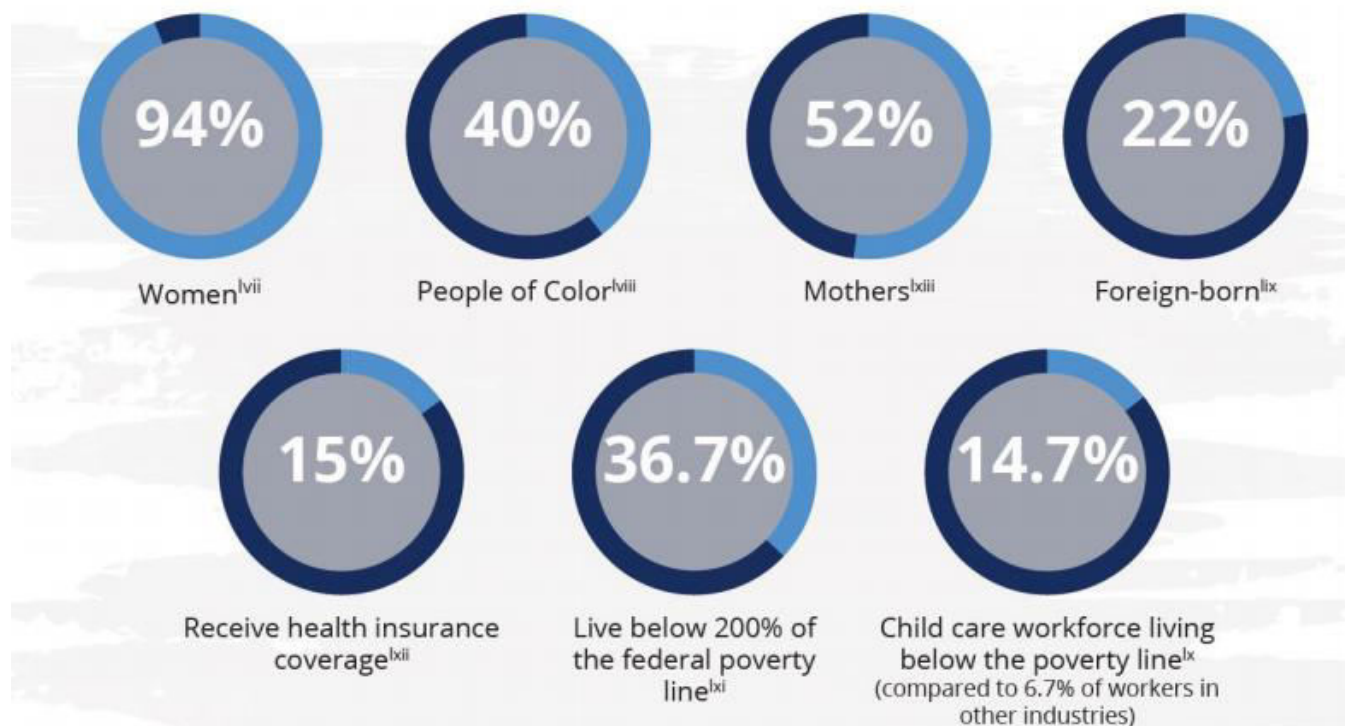
Age	% in Home-Based Care	% in Center-Based Care
Less than 1 year	29%	26%
1-2 years	26%	45%
3-5 years	16%	82%

Workforce

Roughly **1.5 million people** in the United States work in the child care profession. As children under the age of five spend an average of **36 hours per week** in a child care setting, these early childhood professionals provide an invaluable service for families.

And yet, **wages for child care workers are among the lowest in the US workforce**. According to the Bureau of Labor Statistics, the **average wage in 2018** for those employed in child care centers was **\$11.17 per hour**.

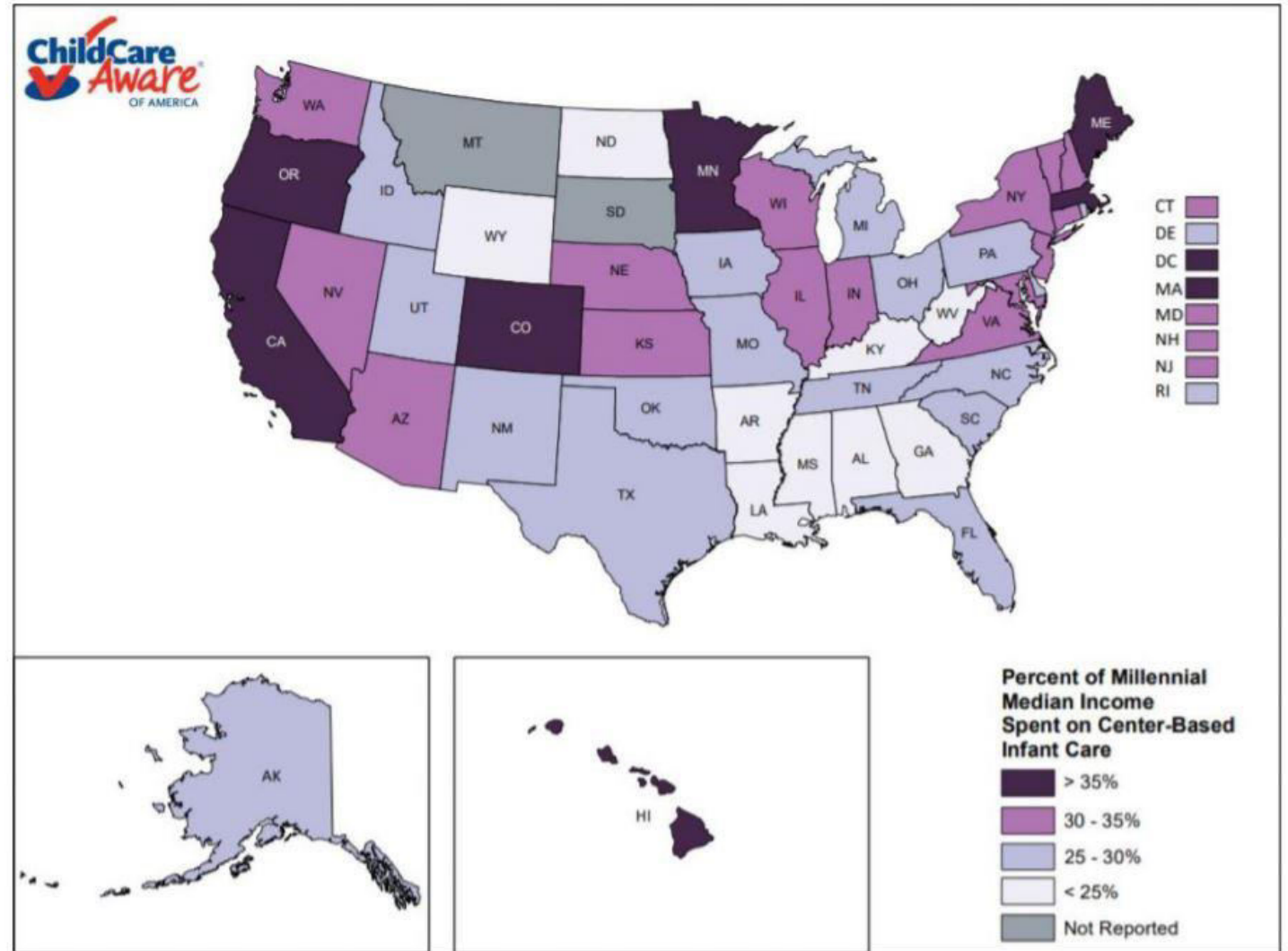
→ A Profile of the Child Care Workforce



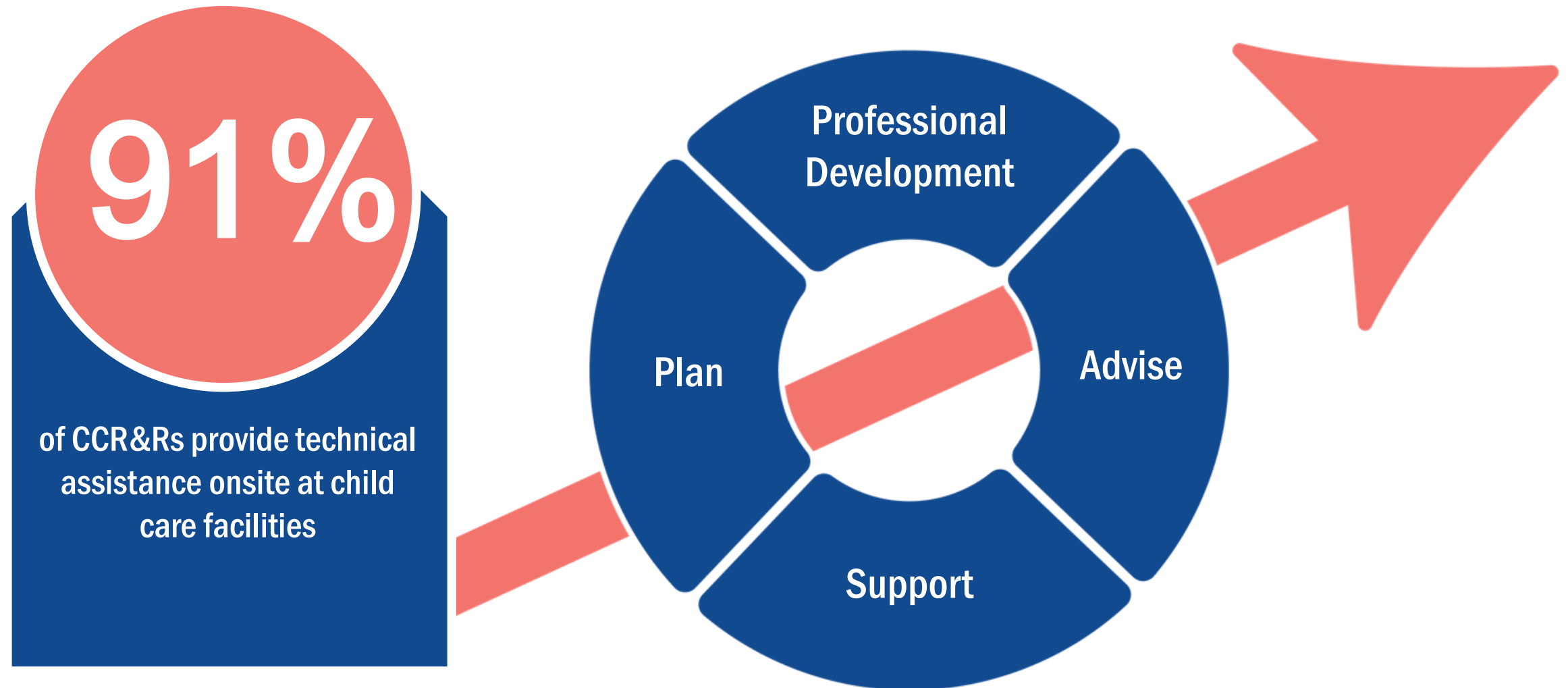
Millennials

Child care prices comprise a large amount of millennial income – anywhere from 18% to 42%.

→ Millennial Map



Innovative Solutions: Quality





Lynette M. Fraga, PhD
Executive Director

www.childcareaware.org