



# Cora SeQuence

## Database Structure Guide

December 2020



## Notice

All rights reserved. No part of this document (including the text, images, graphics or the selection or arrangement of content, which forms an original compilation), may be reproduced or transmitted in any material form or by any means, electronic or mechanical, including photocopying or recording in any medium (whether or not transiently) without the written permission of the copyright holder. Such written permission must also be obtained before any part of this publication is stored in a retrieval system of any nature. The same shall apply to the export of this publication from India, and a violation of this condition will lead to civil and criminal prosecution.

## Contents

General document information .....	7
Purpose .....	7
Prerequisites.....	7
Introduction.....	8
Definition tables.....	9
tblTemplateWorkflowSpaces .....	10
tblTemplateWorkflows.....	10
Important fields.....	10
tblTemplateActivities.....	10
Important fields.....	10
tblTemplatelinks.....	10
Important fields.....	10
tblSignatures .....	11
tblEmailTemplates .....	11
tblMessageTemplates .....	11
Workflow deployment tables.....	12
tblWorkflowVersions .....	13
tblWorkflowDiagrams .....	13
tblWorkflowDiagramElements .....	13
Workflow conversation tables .....	13
tblEmailComposerRecipientsAddressBook .....	13
tblEmailComposerSignatures.....	13
tblEmailComposerTemplates .....	13
tblEmailListenerMessages .....	13
tblEmailListenerMessageAttachments .....	13
tblWorkflowInstanceAttachments .....	14
tblWorkflowInstanceConversations.....	14

tblWorkflowInstanceConversationsAttachments .....	14
tblWorkflowInstanceConversationsAttachmentsDeleted.....	14
tblWorkflowInstanceConversationsDeleted.....	14
Role-based access (RBAC) tables.....	15
tblRoles .....	15
tblRules .....	16
tblRoleAssignments.....	16
tblRoleAssignments_Workflows .....	16
tblResourceToRoleAssignments .....	16
tblResourceToRoleAssignments_Workflows.....	16
tblInstanceToRoleAssignments_Workflows .....	16
Instance tables .....	17
tblInstanceWorkflows.....	17
Important fields.....	17
tblInstanceActivities.....	18
Important fields.....	18
tblActionItems.....	19
Important fields.....	19
tblActionItemsOrgs .....	20
tblActionItemsAttachments.....	20
tblActionItemReminders .....	20
tblFiles .....	20
tblFileBlobs .....	20
tblAttachments.....	20
tblInstanceWorkflowsDataPropagation.....	20
tblTemplateSolutions .....	21
tblSolutionCases .....	21
tblAllocatedSolutionCases.....	21

tblSolutionTasks.....	21
tblAllocatedSolutionTasks .....	21
UACTXXX.....	21
UWFXMLX.....	22
XXXXXXClosed.....	22
tblActionItemsAttachmentsClosed.....	22
tblActionItemsClosed .....	22
tblActionItemRemindersClosed .....	22
tblActionItemsOrgsClosed.....	22
tblAllocatedSolutionCasesClosed.....	22
tblAllocatedSolutionTasksClosed .....	23
tblAttachmentsClosed.....	23
tblInstanceActivitiesClosed.....	23
tblInstanceActivitiesRollbackClosed.....	23
tblInstanceWorkflowsClosed.....	23
tblInstanceWorkflowsDataPropagationClosed.....	23
tblInstanceWorkflowsRollbackClosed.....	23
tblSolutionCasesClosed .....	23
tblSolutionTasksClosed.....	24
tblWorkflowInstanceAttachmentsClosed .....	24
tblWorkflowInstanceConversationsClosed.....	24
tblWorkflowInstanceConversationsAttachmentsClosed .....	24
XXXXXXRollback.....	24
tblInstanceActivitiesRollback.....	24
tblInstanceWorkflowsRollback.....	24
Organization-based structure tables .....	25
tblEmployees.....	25
Important fields.....	25

tblEmpToOrg.....	26
Important fields.....	26
tblOrganization.....	26
tblOrgToOrg.....	26
tblEmployeeTitle.....	26
tblEmployeeRolesinGroup.....	26
tblCalendars.....	26
tblEmployeeExtendedProperties.....	27
tblOrganizationExtendedProperties.....	27
tblPasswordFormats.....	27
Security table.....	28
tblSecrets.....	28
Archiving tables.....	28
tblArchivingFilesQueue.....	28
tblArchivingGlobalConfiguration.....	28
tblArchivingProfilesVersions.....	28
tblArchivingQueue.....	28
tblArchivingWorkflowInstancesToExclude.....	28
HotOperations tables.....	29
USL[Solution GUID]_Cases.....	29
USL[Solution GUID]_AllocatedCases.....	29
USL[Solution GUID]_Tasks.....	29
USL[Solution GUID]_AllocatedTasks.....	29
USL[Solution GUID]_TaskEmployeeAssignments.....	29
USL[Solution GUID]_TaskRoleAssignments.....	29
Optimizing performance.....	30

## General document information

### Purpose

The purpose of this document is to provide an overview of the Cora SeQUENCE database structure. This document briefs about the tables included in the database, the data held in these tables, and relationship between different database tables.

This document does not provide a complete list of database tables or fields but focuses only on the major ones.

### **WARNING**

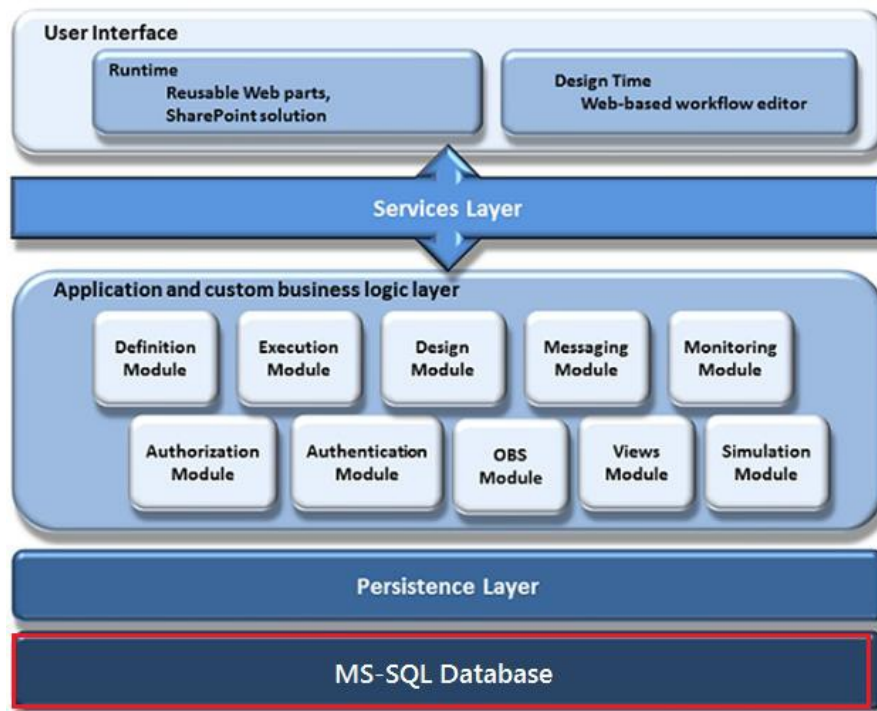
It is forbidden by any means to change or update Cora SeQUENCE System tables' data or schema without using the product API code. However, you may add indices on user tables to improve database performance.

### Prerequisites

Intermediate knowledge of Cora SeQUENCE.

## Introduction

Cora SeSequence data is stored in an MS-SQL database.



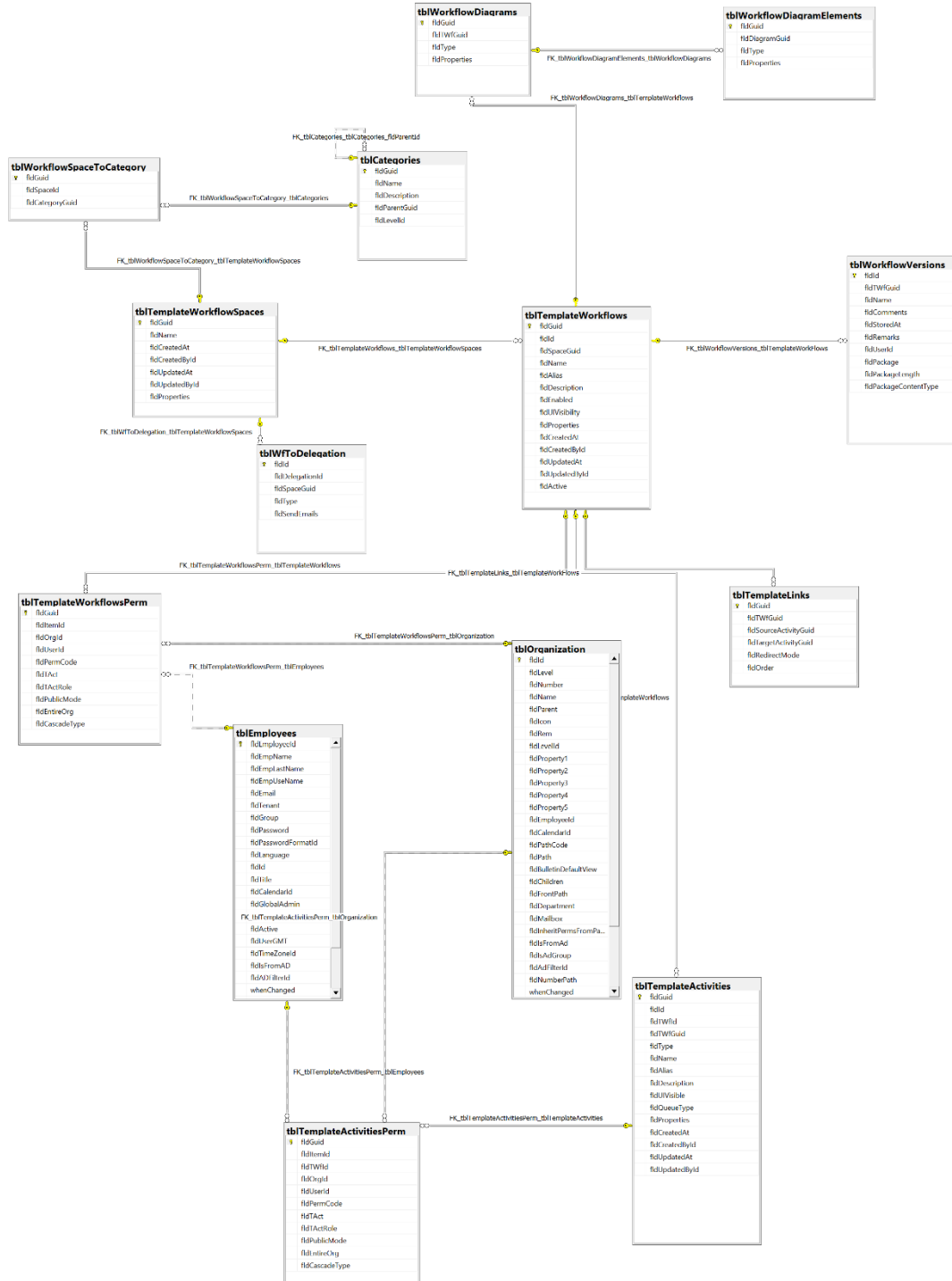
The Cora SeSequence database includes following types of tables:

- **Definition tables:** Tables that store the definition of workflows and activities.
- **Workflow deployment tables:** Tables that store workflow related data such as workflow versions and diagrams.
- **Workflow conversation tables:** Tables that store all conversation components related data.
- **Role-based access tables:** Tables that store role-based access information.
- **Instance tables:** Tables that store the execution data of workflow and activity instances.
- **Organization-based structure tables:** Tables that store Organization related data like hierarchy, employees, roles, etc.
- **Security tables:** Tables that store security related data.
- **Archive tables:** Tables that store archived data.
- **HotOperations tables:** Tables that store HotOperations data.



## Definition tables

The following diagram displays Cora SeSequence definition tables and their relationship to each other:



In all the template tables, fldname stores the name of the entity as it will be used in design time, and fldalias stores the name of the entity as it will be displayed in the Flowtime to the end user.

**NOTE**

For multilingual capabilities, refer to the [multilingual configuration](#) article.

## tblTemplateWorkflowSpaces

Holds the definition of the workflow spaces.

## tblTemplateWorkflows

Holds the definition of workflows within the space.

### Important fields

- fldproperties – Stores workflow properties such as variables, localization, and other metadata definitions as an XML object.

## tblTemplateActivities

Holds the definition of activities within the workflow.

### Important fields

- fldproperties – Stores activity properties like bindings, model and more as an XML object.

## tblTemplateLinks

Holds the definition of the connections between activities.

### Important fields

- fldRedirectMode – 3=All, 2=Automatic, 1=Manual, 0 =Disabled



## tblSignatures

Holds the workflow signatures data when a user signs a workflow.

## tblEmailTemplates

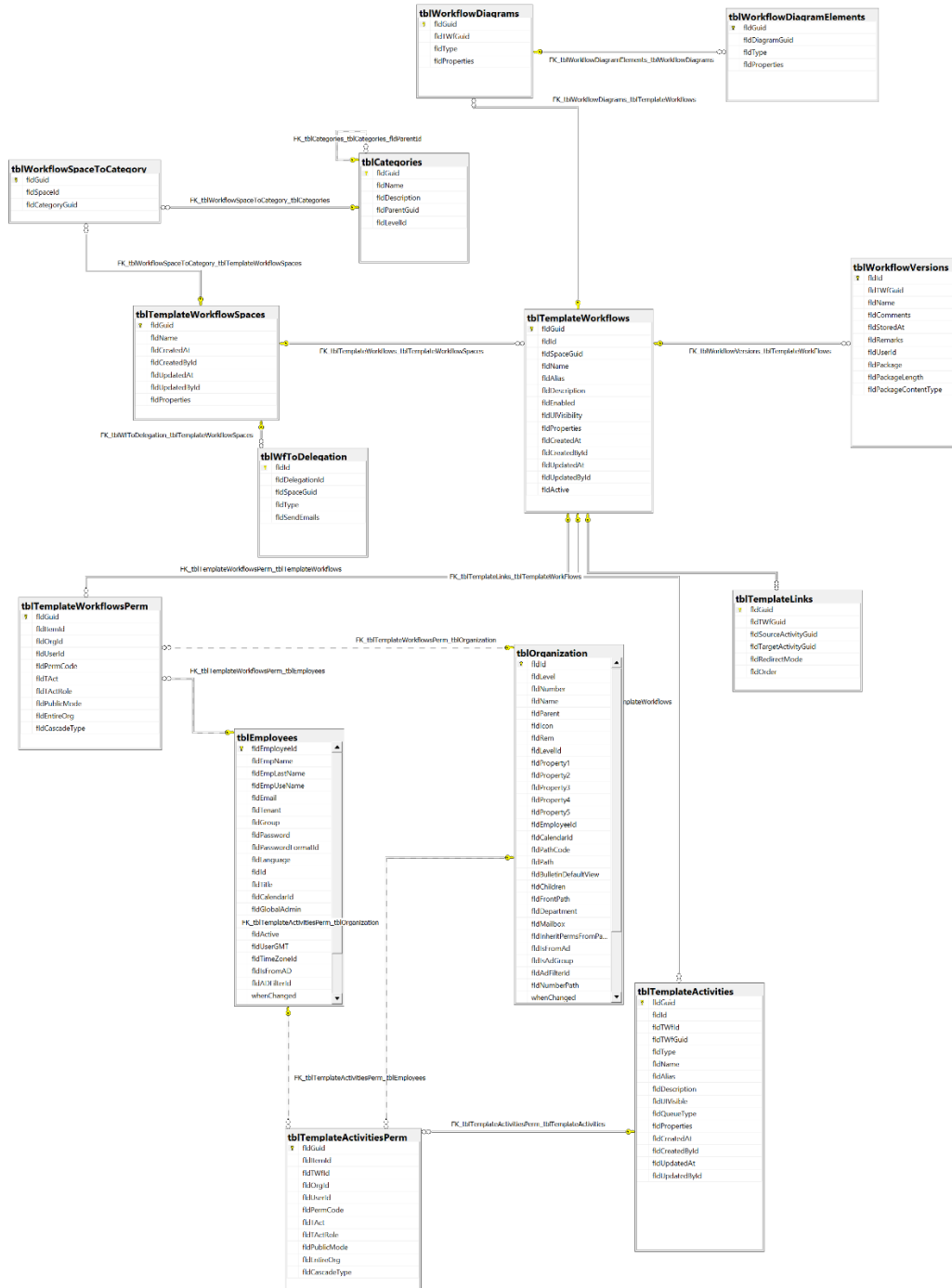
Holds all the email templates used in Cora SeQUENCE.

## tblMessageTemplates

Holds all the message templates used in Cora SeQUENCE.

## Workflow deployment tables

The following diagram displays Cora SeSequence workflow deployment tables and their relationship to each other:





### tblWorkflowVersions

Holds version data of all workflows exported in Cora SeQUENCE.

### tblWorkflowDiagrams

Holds the location and size of all graphic objects defined in a workflow.

### tblWorkflowDiagramElements

Holds all the diagram elements that represent an activity in a workflow.

## **Workflow conversation tables**

### tblEmailComposerRecipientsAddressBook

Holds all the recipients' email addresses from Email Composer conversations component in Cora SeQUENCE.

### tblEmailComposerSignatures

Holds all signatures available for Email Composer conversations component in Cora SeQUENCE.

### tblEmailComposerTemplates

Holds all email templates used in Email Composer conversations component in Cora SeQUENCE

### tblEmailListenerMessages

Holds all the email messages received by Email Listener in Cora SeQUENCE.

### tblEmailListenerMessageAttachments

Holds all the attachments from email messages received by Email Listener in Cora SeQUENCE.



## tblWorkflowInstanceAttachments

Holds all the attachments only related to the workflow instances.

## tblWorkflowInstanceConversations

Holds all the conversation items from workflow instances.

## tblWorkflowInstanceConversationsAttachments

Holds all the conversation attachments from workflow instances.

## tblWorkflowInstanceConversationsAttachmentsDeleted

Holds all the deleted conversation attachments from workflow instances.

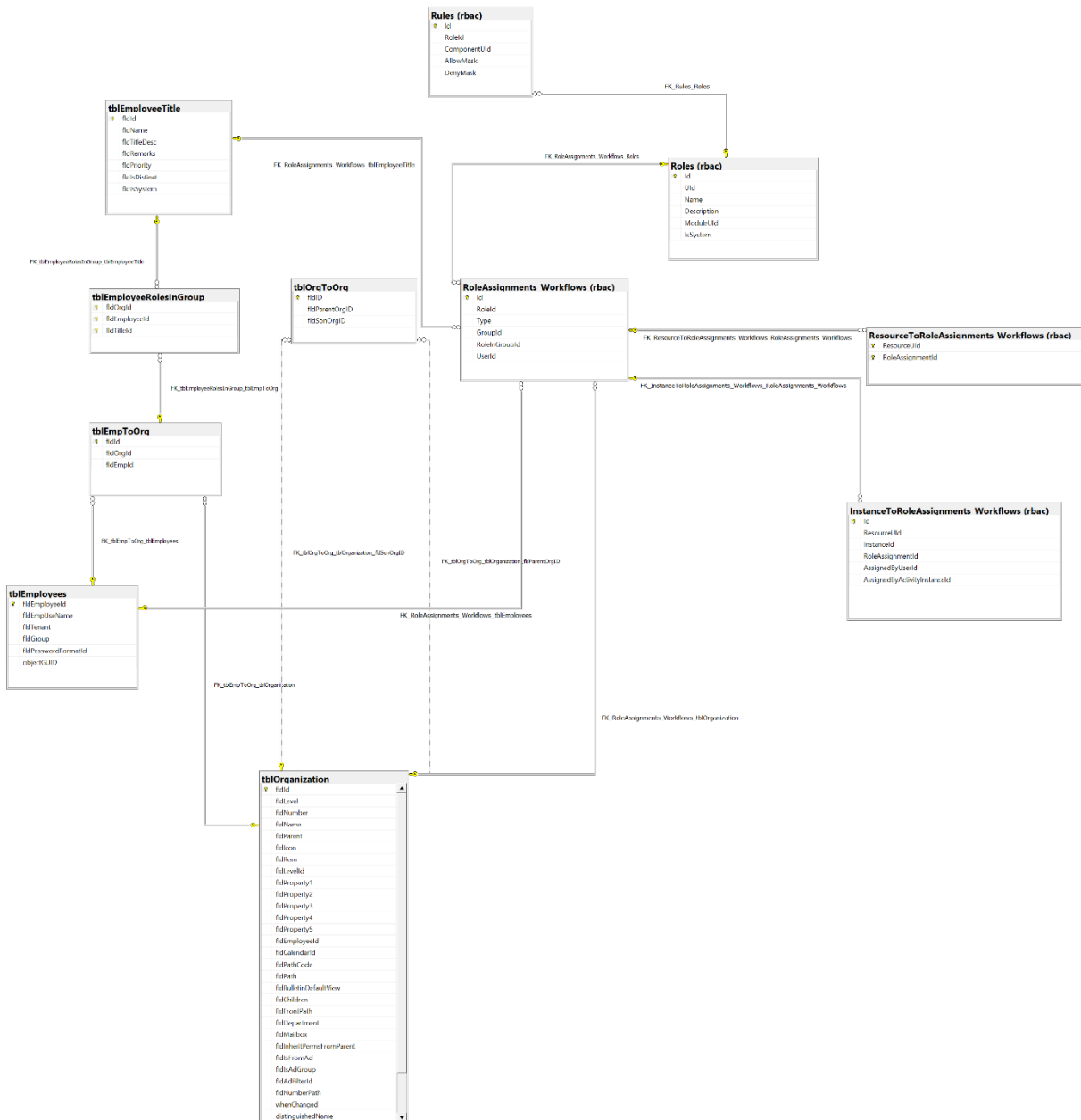
## tblWorkflowInstanceConversationsDeleted

Holds all the deleted conversation items from workflow instances.

## Role-based access (RBAC) tables

These tables define the role-based access permissions to workflow instances.

The following diagram displays Cora SeSequence RBAC tables and their relationship to each other:



### tblRoles

Holds data about all the roles defined in Cora SeSequence.



## tblRules

Holds all the rules defined in Cora SeQUENCE.

## tblRoleAssignments

Holds all the data about the roles assigned to different users in Cora SeQUENCE.

## tblRoleAssignments\_Workflows

Holds data about the roles assigned to different users for a workflow in Cora SeQUENCE.

## tblResourceToRoleAssignments

Holds the mapping data of resources to roles assigned.

## tblResourceToRoleAssignments\_Workflows

Holds the mapping data of resources to roles assigned to workflows.

## tblInstanceToRoleAssignments\_Workflows

Holds mapping data of instances to roles assigned to workflows.





<b>Status</b>	<b>Value</b>	<b>Description</b>
Executing	1	The workflow instance waits to resume its execution.
Idle	2	The workflow instance finished its execution and waits for user\system input.
Completed	3	The workflow instance was completed.
Deleting	4	The workflow instance deletion process has started.
Deleted	5	The workflow instance deletion process has finished.
Aborting	6	The workflow instance abort process has started.
Aborted	7	The workflow instance was aborted.

## tblInstanceActivities

Holds the records of instance activities that are created during the execution of a workflow instance.

### Important fields

- fldResult – Stores the activity result.
  - 1= the activity execution has ended with success
  - 2 = the activity execution has ended with failure
- fldStatus – Stores the status of the activity.

<b>Status</b>	<b>Value</b>	<b>Description</b>
Created	0	The activity instance is created.
Pending	2	The activity instance waits to resume its execution.
Executed	3	The activity instance finished its execution and waits for redirect.
Redirected	4	The activity instance is redirected.

<i>Status</i>	<i>Value</i>	<i>Description</i>
Completed	5	The activity instance is redirected and completed.
Deleted	6	The activity instance is deleted.
RolledBack	7	The activity instance is rolled back.

- *fldLastUpdateDate* – Date when the activity was last updated.
- *fldCompletionDate* – Date when tasks and activities were completed.
  - Forms/Tasks: when the form/task was submitted.
  - System activities: this is updated upon activity completion.

## tblActionItems

Holds all the messages that are created in the system. Action items can be related to activity. For example: Task, workflow, question, or none of them.

### Important fields

- *fldTold* – Stores the recipient id (connect to tblEmployees).
  - fldMessageBehaviorType* - Empty Guid = Default,  
AF9B7DB7-EF8D-41C7-B8D6-4DD212252978 = LoadBalancing Queue,  
ED598F50-F934-4EFA-8C80-EB2707B99D02 = Broadcast Queue
  - fldSource* - 0 = System,  
1 = User
  - fldCustomType* -  
25B8725D-61C0-4424-8A7C-0235139A4655 = RecalledMessage, F883F524-2707-4959-8713-08B4D504B238 = Comment, 100215E0-AB4C-4D11-BB7C-0FC313248895 = Delegation, E966270A-8759-45CD-B222-3CAB5A7F0DB0 = Question, E993B9F3-3A3F-4DE6-B38B-A086A1729CA1 = Rollback, 67244068-B77E-410D-B26D-E34A607514FD = Answer  
78EC444B-DA5E-4A3D-BDBF-179653C03BE4 = Reminder
  - fldSendStatus* - 1= Not Sent,  
2= Sent,  
3= Failed.
  - fldMessageMode* - 0 = None,  
1 = Send Link, 4 = Email Only



*fldMessageType* - 1 = Notification,  
2 = Task

## tblActionItemsOrgs

Holds all the relation between the organization and employees, and if there is any organization change that affect the action items (messages for example) that data is updated in this table.

## tblActionItemsAttachments

Stores action item attachments. As part of version 9.X we have enabled the possibility to change the location of attachments from the DB to file storage or Azure Blob storage.

## tblActionItemReminders

Hold all the action item reminders.

## tblFiles

Stores the file metadata like name, Id, type, connection, and size.  
The content of the file is not stored in the database, it is stored in file storage or Azure Blob storage.

## tblFileBlobs

Stores the file content, in case the default SQL configuration applies.

## tblAttachments

Holds the attachment(s) attached to a form in a workflow execution.

## tblInstanceWorkflowsDataPropagation

Holds the global variables for all the workflows. The column names are driven by the variable caption. Each time a workflow is executed, an activity places values in these variables.

This table is used in grids.

## tblTemplateSolutions

Holds full definition of the solution. For example, information about the master workflow and the resource group.

## tblSolutionCases

Holds the master workflow data, to which a solution is assigned.

## tblAllocatedSolutionCases

Holds all the data about groups to which case is allocated when we execute the execution plan.

## tblSolutionTasks

Holds only dynamic task data.

## tblAllocatedSolutionTasks

Holds all the data about groups to which dynamic task is allocated when we execute the execution plan, and about task assignment (role or user).

## UACTXXX

Holds the data that is captured during the activity execution. UACT can be related to forms or integration activities.

For integration activities, Cora SeQUENCE persists the response and request of the call.

In form-based UACTs, there can be a record per activity, per workflow, or per action items, depending on the key definition in the data model.

## UWFXXX

Holds the variables for a workflow template. Values are set and updated during workflow execution.

### **NOTE**

Closed Table are populated during a nightly back-office job. There may be closed items in the regular tables until the job cleans them to the closed tables.

## **XXXXXClosed**

We have a window service that takes all the records that have closed data and copy the data into the closed tables. The service then deletes the copied data from the open tables.

Following is the list of closed tables in Cora SeQUENCE:

### **tblActionItemsAttachmentsClosed**

Stores action item attachments whose source workflow instances were closed.

### **tblActionItemsClosed**

Holds all the messages created in the system whose source workflow instances were closed.

### **tblActionItemRemindersClosed**

Stores action item reminders whose source workflow instances were closed.

### **tblActionItemsOrgsClosed**

Holds all the relation between the organization and employees whose source workflow instances were closed.

### **tblAllocatedSolutionCasesClosed**

Stores all the data about groups to which case is allocated on plan execution for source workflow instances that were closed.

### tblAllocatedSolutionTasksClosed

Stores all the data about groups to which dynamic task is allocated on plan execution for workflow instances that were closed.

### tblAttachmentsClosed

Holds attachment(s) from closed workflow instances.

### tblInstanceActivitiesClosed

Holds all the closed workflow instance activities.

### tblInstanceActivitiesRollbackClosed

Holds all the closed workflow instance activities that have been rolled back.

### tblInstanceWorkflowsClosed

Holds the records of closed workflow instances.

### tblInstanceWorkflowsDataPropagationClosed

Holds the global variables for all the closed workflow instances.

### tblInstanceWorkflowsRollbackClosed

Holds all the closed workflow instances that have been rolled back.

### tblSolutionCasesClosed

For closed workflow instances, holds the master workflow data, to which a solution is assigned.

### tblSolutionTasksClosed

Holds only dynamic task data for closed workflow instances.

### tblWorkflowInstanceAttachmentsClosed

Holds all the attachments only related to the closed workflow instances.

### tblWorkflowInstanceConversationsClosed

Holds all the conversation items from the closed workflow instances.

### tblWorkflowInstanceConversationsAttachmentsClosed

Holds all the conversation attachments from the closed workflow instances.

## **XXXXXRollback**

If we would like to rollback what has been done while executing until specific point in time, we will be able to find the relevant info into the rollback tables. We keep data of which instance has been rolled back. The metadata for these instances is copied into the rollback tables, tblInstanceWorkflowRollback and tblInstanceActivityRollback. This info is then deleted from the operative tables.

### tblInstanceActivitiesRollback

Holds data of the instance activities that have been rolled back.

### tblInstanceWorkflowsRollback

Holds data of the instance workflows that have been rolled back.





## tblEmpToOrg

Holds the relation between employees and their groups.

### Important fields

- fldEmpOrgTitle – The value indicates the employee role in the group. The role name and description can be retrieved from tblEmployeeTitle.
- fldOperator – indicates if the employee role is group manager or not.
  - 1 = The employee is a group manager of the group,
  - 0 = the employee is not a group manager.

## tblOrganization

Holds all the groups and OUs defined in Cora SeQUENCE.

## tblOrgToOrg

Holds the relation between Groups/OUs in the Organization structure.

## tblEmployeeTitle

Holds the roles defined in Cora SeQUENCE.

Each employee has a defined user role and a role within the group.

## tblEmployeeRolesinGroup

Holds all the roles for a specific employee within a group.

This table is similar to the tblEmpToOrg, table and gives details between tblEmployees, tblOrgaznization, and tblEmployeeTitle.

## tblCalendars

Holds calendars data with working days, non-working days and vacations.

This table has connections to tblEmployees and tblOrganization tables.



### tblEmployeeExtendedProperties

Holds all the extended properties of users defined in Cora SeQUENCE.

By default, the table is only with one column, fldEmployeeId.

### tblOrganizationExtendedProperties

Holds all the extended properties of Groups and OUs defined in Cora SeQUENCE.

By default, the table has only one column, fldId.

### tblPasswordFormats

Holds available password formats in Cora SeQUENCE. There are three ways to store passwords in our system, clear text, internal encryption, and hash.

## Security table

### tblSecrets

Holds the encrypted secret data.

## Archiving tables

### tblArchivingFilesQueue

Holds all the files in queue for archiving.

### tblArchivingGlobalConfiguration

Holds the archiving global configuration settings.

### tblArchivingProfilesVersions

Holds the archiving profiles versions.

### tblArchivingQueue

Holds all the profiles in queue for archiving.

The profile defines how to archive workflow's data. During the archiving the archiving global configuration settings are also considered.

### tblArchivingWorkflowInstancesToExclude

Holds the workflow instances to be excluded from archiving.

Use this table when you need to prevent some specific workflow instances from being archived.

## HotOperations tables

**NOTE**

Applies to Cora SeQUENCE 8.x with HotOperations license.  
All the USL tables are deprecated in version 9.0 and later.

The following tables support HotOperations entities.

### USL[Solution GUID]\_Cases

Stores cases created in HotOperations, and indicates if there was manual allocation.

### USL[Solution GUID]\_AllocatedCases

Stores manual allocation of cases.

### USL[Solution GUID]\_Tasks

Stores dynamic tasks properties such as subject due date and others.

### USL[Solution GUID]\_AllocatedTasks

Stores dynamic tasks allocation (replicated from the case) and manual assignment type.

### USL[Solution GUID]\_TaskEmployeeAssignments

Stores manual assignment by employee name.

### USL[Solution GUID]\_TaskRoleAssignments

Stores manual assignment by role.

## Optimizing performance

You can optimize Cora SeSequence database performance by adding indices on the following tables:

- UACTXXX
- UWFXXX
- UStatsXXX
- UStatsXXXXHistory

### **NOTE**

Do not add any index insertions besides the above.