

# Comparative Embryo Cards

---

**Life Science (Lower Middle)**  
**Unit 5**

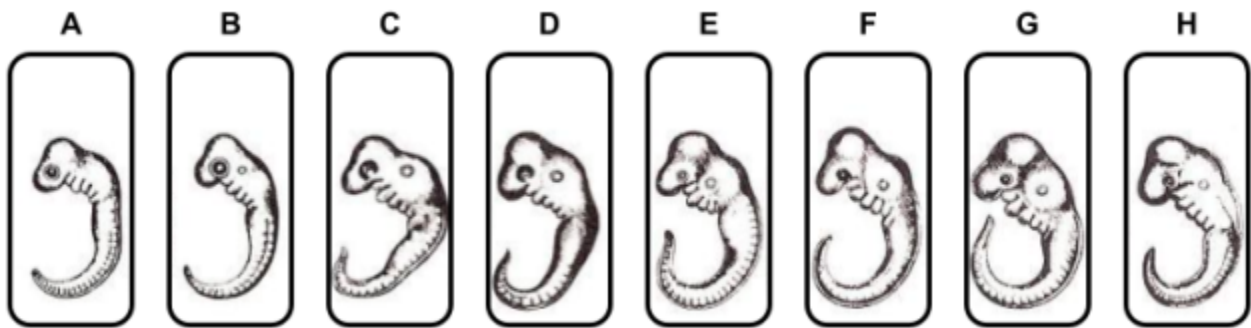
---

## Comparative Embryo Cards

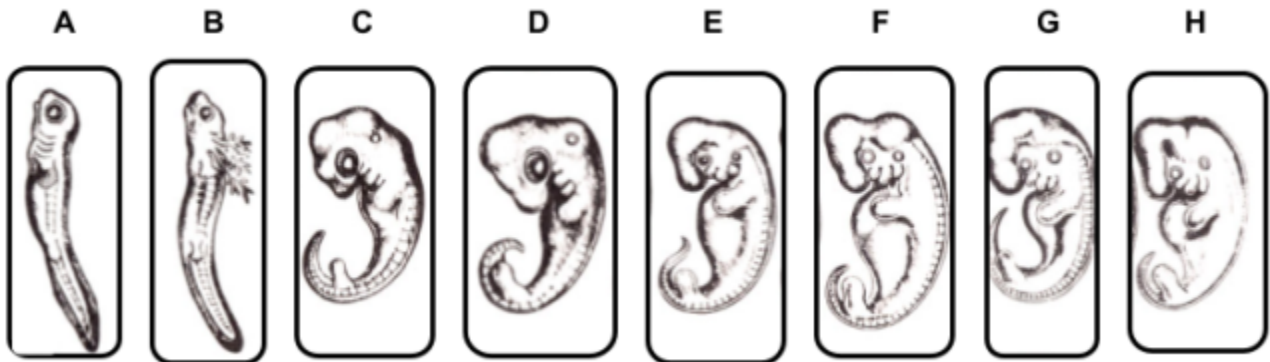
Images Credit: Adapted from [Romanes, G. J.](#); uploaded to Wikipedia by en>User:Phlebas; authors of the description page: en>User:Phlebas, en>User:SeventyThree, Public domain {{PD-US-expired}}, via Wikimedia Commons

**Instructions:** Give scholars set A first. Allow them to make observations and predictions in their Lab Notebooks. Then give scholars set B. Again, allow them to make observations and revise their predictions in their Lab Notebooks. Last, give scholars set C and allow them to make their final observations before answering the analysis questions.

### Set A



### Set B



---

Comparative Embryo Cards

Set C

