



Office Practicum Maintenance Release Notes

Version 20.13 Build .25
(OP 20.13.25)

Release Availability

 **On-Premise:** August 30, 2021, following the standard availability announcement

 **Cloud:** August 28, 2021

Release Contents

[Improved Functionality](#)

2

[Issue Resolution](#)

3

Before submitting a case highlighting release issues, we recommend reviewing the [Post-Release Support Trend Updates](#) to see if your issue has already been reported. If it has, there is no need to create another case.

All content is subject to change.

Improved Functionality

Provider [P], Clinical [C], Practice Management [M], Billing [B], All [A]

[A] Phrase Construction and spell check available within a message

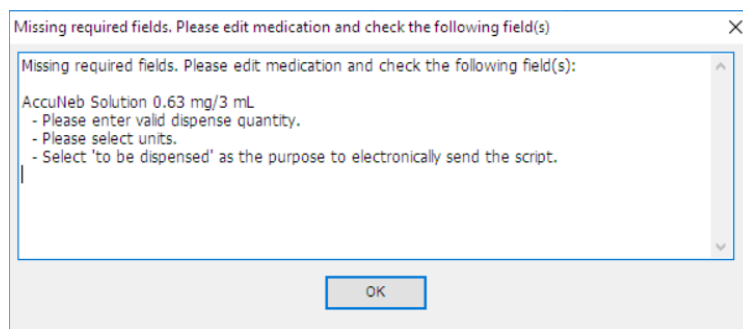
➤ *Main Navigation Panel > Phone | Clinical or Practice Management tab > Send Message*

In a message, when a user right-clicks on a selected word, the phrase list will display. When a phrase is selected, it will be inserted into the message. In addition, when a word is misspelled, it will be underlined and the user will be presented with a list of alternative spelling options when they right-click.

[P] Prescription validation prior to sending to a Pharmacy

➤ *Patient Chart > Medications | Encounter or Well Visit Note*

A prescription message window will display, when saving or refilling an existing medication, when a prescription is missing information. This will allow the prescriber to correct the prescription prior to sending it to the pharmacy.



[P] End date calculated on Pharmacy initiated refill requests

➤ *Main Navigation Panel > e-Prescribe > Refill/Change Requests tab*

The end date will be calculated for a Pharmacy initiated refill request when the prescriber selects to Replace the medication and the days supply and dispense values are present.

[Back to Release Contents](#)

Issue Resolution

- **Missing Coding/Audit support information:** Coding/Audit Support information appears on the Audit Report Note independent of additional CPTs being added to the note.
- **InteliChart payments:** When a Daysheet is run, the InteliChart payments will display. The InteliChart payments also are displayed when viewing Current Receipts.
- **Selected patient chart opens:** The selected patient chart will open when navigating between Refills/Changes Denied tab and Refill/Change Request tab in the ePrescribing Center.
- **Pharmacy ID and Pharmacy information:** The Pharmacy ID and Pharmacy information fields are populated as expected when navigating to the Status tab of a prescription.
- **End date calculation for Pharmacy initiated refills:** When calculating the end date for a Pharmacy initiated refill request, the system will use both the Days Supply and Disp # fields.
- **Prescription end date recalculation:** When a prescription start date is entered for a future date, the system will recalculate the end date based upon the Days Supply.

[Back to Release Contents](#)