

Model: A2**Serials:** A-2 through A-144**Subject:** Wing Fuel Tank Filler Cap Rework

The following rework may be accomplished to eliminate the possibility of fuel overflow and in-flight siphoning:
(Refer to Figure 1)

- (1) Drill # 30 (.128) diameter hole through center of filler cap.
- (2) Install AN380C3-8 cotter pin downward through hole in filler cap.
- (3) Install 224 tube cap with open end against filler cap and cotter pin extended through the hole in the opposite end.
- (4) Install AN960C6 washer and bend tabs of the cotter pin flatly against washer and bottom of cap.

The above parts (1 each 224 tube cap, AN380C3-8 cotter pin, and AN960C6 washer) will be shipped, prepaid, upon request.

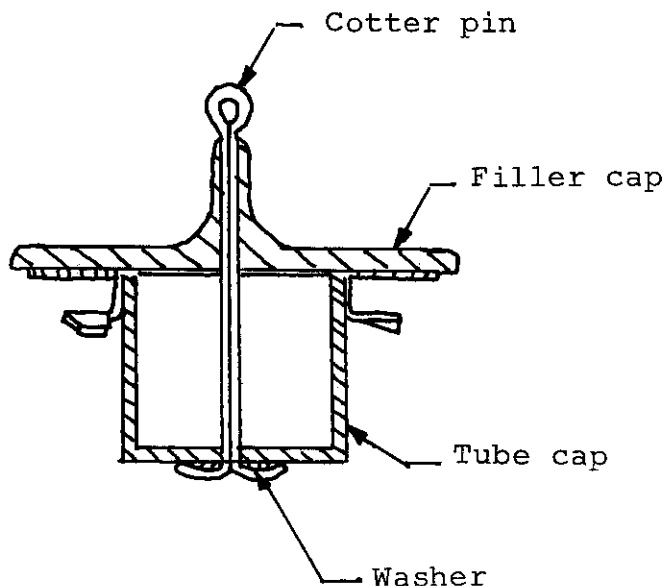


Figure 1.