

**ENGINEERING BULLETIN No. 13**

Reference: Airplanes equipped with Continental  
Injector Type Engines—A-65J.

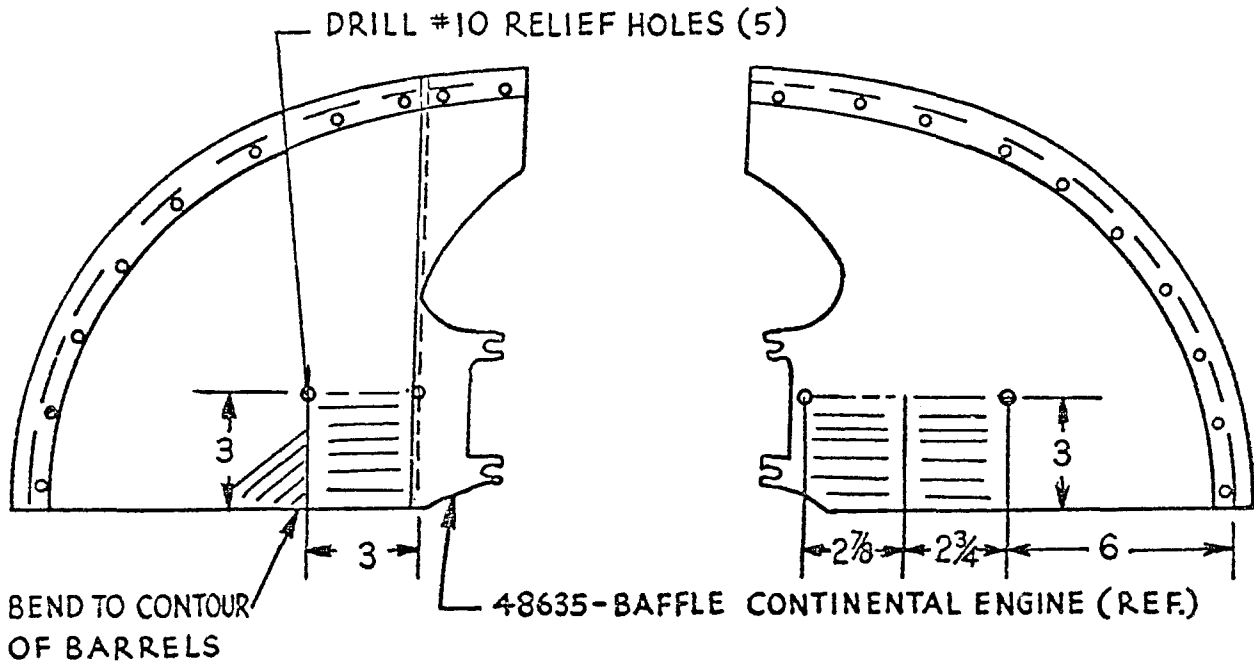
Baffling should be arranged for better engine cool-  
ing according to sketches No. 1, No. 2, and No. 3.

Cut the pressure baffle furnished with airplane as  
shown on sketch #1 below. Bend lower edge for-  
ward to follow contour of barrels.

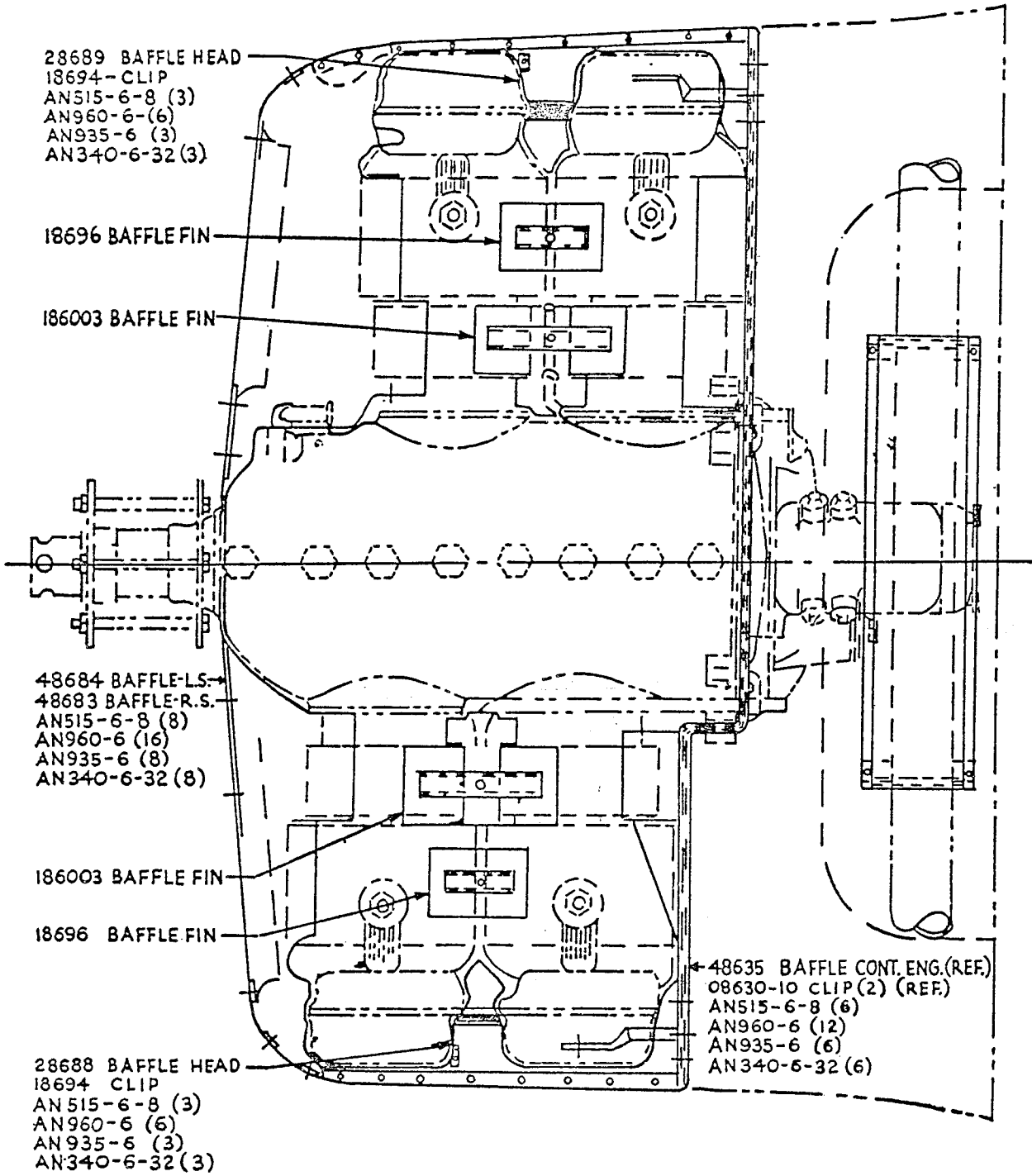
Assemble baffles as shown on attached sketches  
#2 and #3.

Assemble manifold cape on manifold using heater  
lugs on manifold.

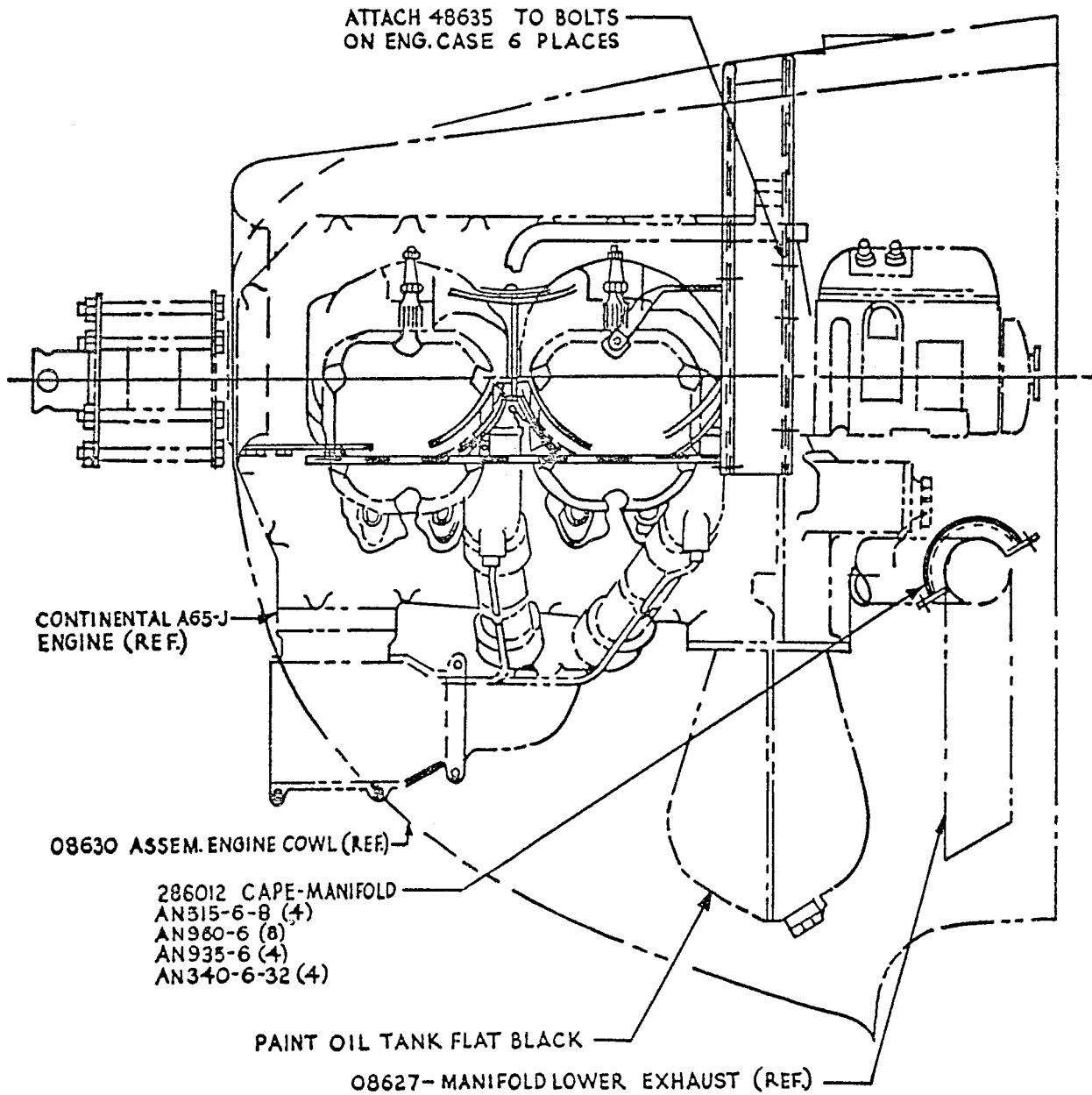
Incidentally, the oil temperature may be lowered  
3 or 4 degrees by painting the oil tank black.



SKETCH No. 2



SKETCH No. 3



NOTE: THIS IS A PRESSURE BAFFLE SYSTEM  
BAFFLES MUST FIT TIGHT ON ASSEMBLY.