

LUSCOMBE AIRPLANE CORPORATION  
DALLAS 1, TEXAS

June 18, 1946

~~REVISION~~ BULLETIN NUMBER 3-46

SUBJECT: Installation of Rudder Return Springs, Model 8A  
Serial Numbers 1925-3049

In order to improve the directional stability characteristics of the Model 8A airplane, the changes described below and illustrated in the accompanying drawings are to be made as soon as possible.

1. Drill two #10 (.190) holes in firewall, located as per sketch.
2. Drill one #30 (.1285) hole in each rudder control horn, located as per sketch.
3. Install springs between firewall and rudder control horns, using AN42-6 bolts for connection springs to firewall. The spring tension may be varied slightly by carrying the arrangement of the washers on either side of the firewall until the rudder is held perfectly neutral by the springs.

NOTE: that the left spring is installed with a 1" steel link between the spring and the firewall.

The following parts are necessary for this installation:

<u>Part</u>	<u>No. Required</u>
08511-10 - Spring	2
08511-11 - Link	1
AN365-1032 - Nut	3
AN42-6 - Eye Bolt	2
AN520-10-8 - Screw	11
AN960-10 Washer	11

/s/ E.W. Norris  
Chief Engineer

/s/ Otto W. Hoernig  
Service Manager

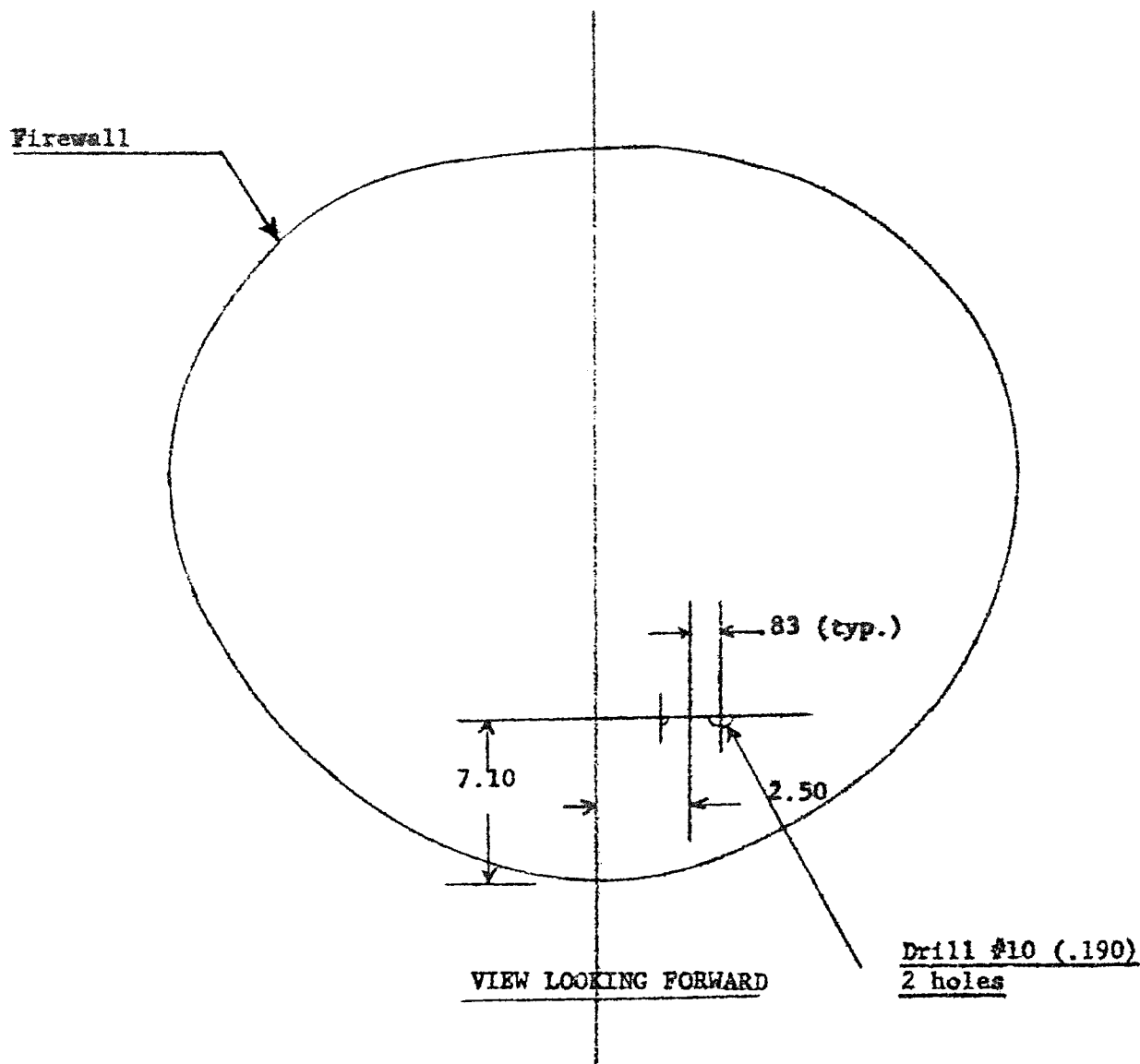
Retyped March 2, 1960  
SILVAIRE AIRCRAFT CO.  
P.O. BOX 719  
FORT COLLINS, COLORADO

ped

LUSCOMBE AIRPLANE CORPORATION

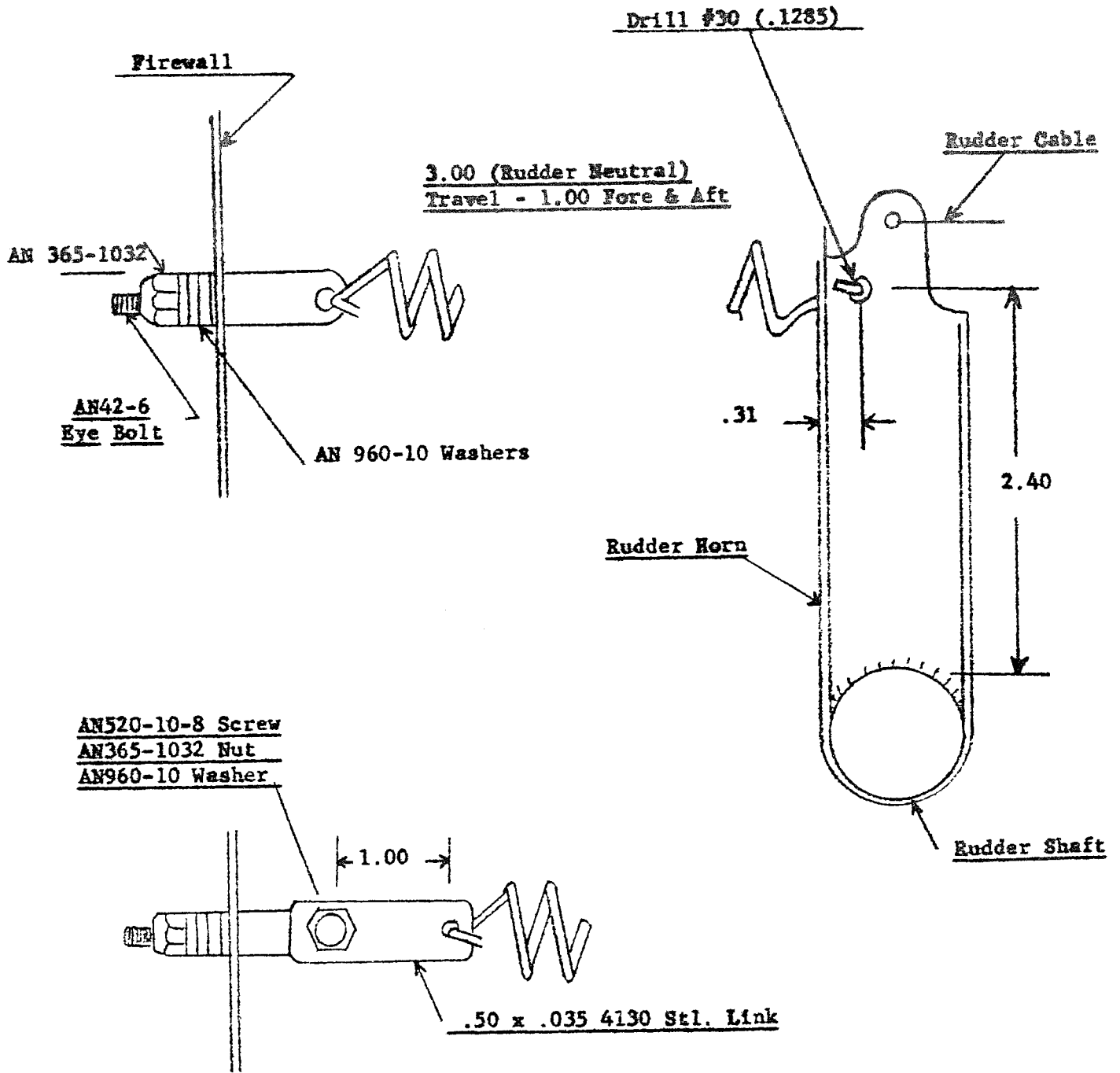
DALLAS 1, TEXAS

SUBJECT: Installation of Rudder Return Springs, Model 8A



LUSCOMBE AIRPLANE CORPORATION  
DALLAS 1, TEXAS

SUBJECT: Installation of Rudder Return Springs, Model 8A



NOTE: For left spring installation  
use link as shown.