

## IMMEDIATE ACTION

# SERVICE

NUMBER 42



# BULLETIN

September 8, 1941

Rev. Date: 2-19-46

**SUBJECT:** Elevator Bungee Installation

**MODELS AFFECTED:** J5, Serial Nos. 1046, 1052, 1057, 1058, 1060, 1063, 1064, 1066, 1068, 1070, 1074, 1077, 1078, 1079, 1090, 1091, 1093, 1095, 1096, 1098 to 1130 and 1132 to 1137.

J3S, Serial Nos. 5983 and 7198.

We are issuing this bulletin at the request of the Civil Aeronautics Authority to advise you that it is considered necessary to immediately make the following changes in the Bungee Installation in your airplane:

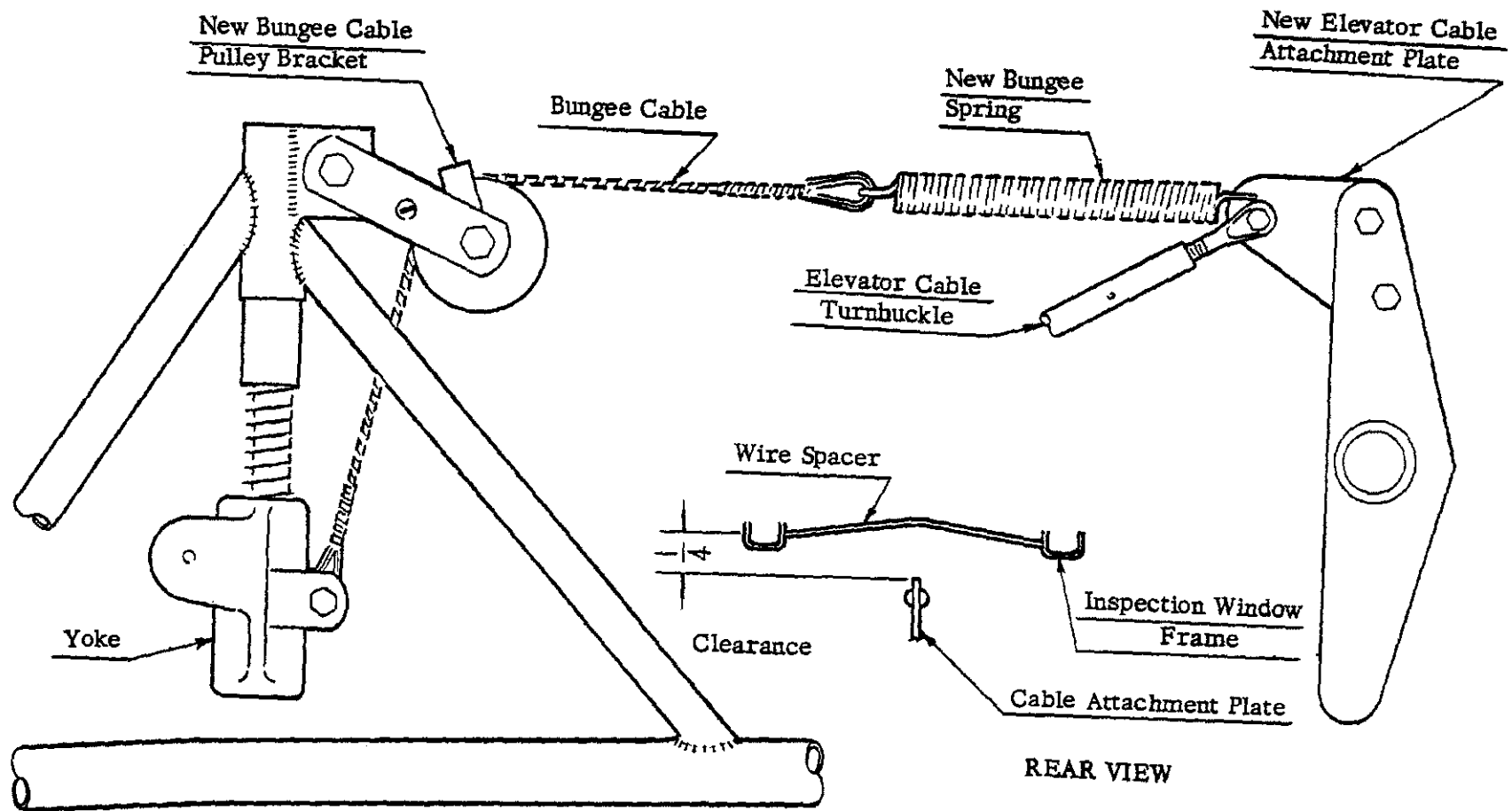
1. The Bungee cable pulley bracket, elevator cable to horn attachment plate and Bungee spring must be replaced by the parts accompanying this bulletin.

2. From the accompanying sketch it will be noted that the revised installation is similar to the original one with the exception of the above mentioned parts and the fact that the spring now attaches directly to a small hole in the elevator cable attachment plate. The small plate, washer and No. 4 screw and nut, that were used to attach the original spring, may be discarded. In dis-assembling the installation, it will not be necessary to disconnect the forward end of the Bungee cable from the stabilizer yoke and in reassembling the installation, the new spring and elevator cable link should be attached to the Bungee cable, then the new pulley bracket and pulley should be installed. The elevator cable plate should then be bolted between the elevator horns and lastly the elevator cable turnbuckle attached to this plate, making certain the turnbuckle is free to swivel.

In the fuselage structure, directly above the elevator horn, there is a wire spacer between the inspection window channels. This should be bent up in the center, if necessary, to prevent interference with the enlarged cable attachment plate. A 1/4" clearance at this point, when the elevator horn is in the most critical position, is considered satisfactory.

An appropriate entry should be made in the airplane log book, covering this change and the enclosed card should be signed and returned to the Service Department of the Piper Aircraft Corporation.

**PIPER AIRCRAFT CORPORATION, LOCK HAVEN, PA., U. S. A.**



NEW BUNGEE INSTALLATION