

## IMMEDIATE ACTION

# SERVICE



# BULLETIN

Service Bulletin #111

March 14, 1949

SUBJECT: TORQUE TUBE CONNECTOR TUBE ASSEMBLY

TO: OWNERS OF PIPER AIRPLANES:

Model J3C Series - Serial Nos. 14027 and Up

Model PA-11 - Serial Nos. 11-1 to 11-910.

Model PA-12 - All Airplanes

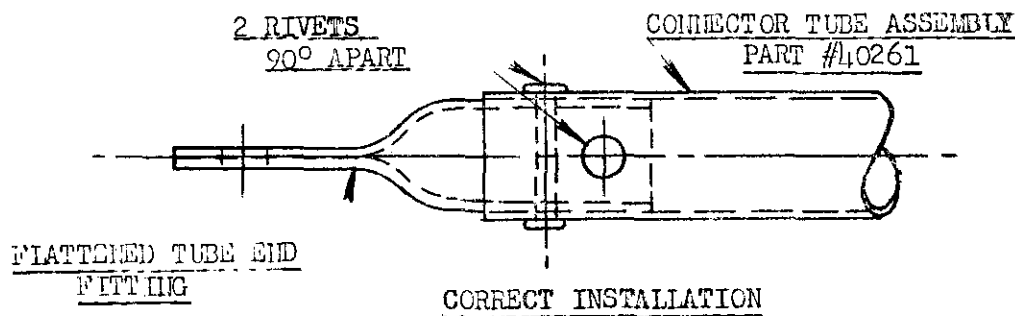
Inspect the above listed airplanes to ascertain that the flattened tube end fitting (Part No. 40861) at each end of the connector tube (located within the torque tube and connecting front and rear sticks) is riveted in place as shown in sketch. Dealers and Distributors are to inspect their stock of spare parts.

This inspection may be accomplished, without removal of any parts.

Full rearward position of control stick will expose the forward fitting to view and full forward position of stick will expose the rearward fitting.

The connector tube end fitting, if not riveted, is to be attached with 1/8" Dia. x 3/4" Long flat or round head soft steel rivets. If facilities are not available for riveting, a new connector tube assembly can be obtained from your Dealer or Distributor in exchange for your present assembly at no cost.

An appropriate entry shall be made in the aircraft log book when this inspection has been made.



PIPER AIRCRAFT CORPORATION, LOCK HAVEN, PA., U. S. A.