

IMMEDIATE ACTION

SERVICE



BULLETIN

August 7, 1946

Number 92

SUBJECT: Muffler Tailpipe Brace

TO: All Owners of PA-12 Airplanes - Serial Nos.
12-1 to 12-285

Several cases of mufflers cracking around the tailpipe outlet have been brought to our attention. In order that this condition may be eliminated, an additional tailpipe brace is necessary. (See sketch opposite side)

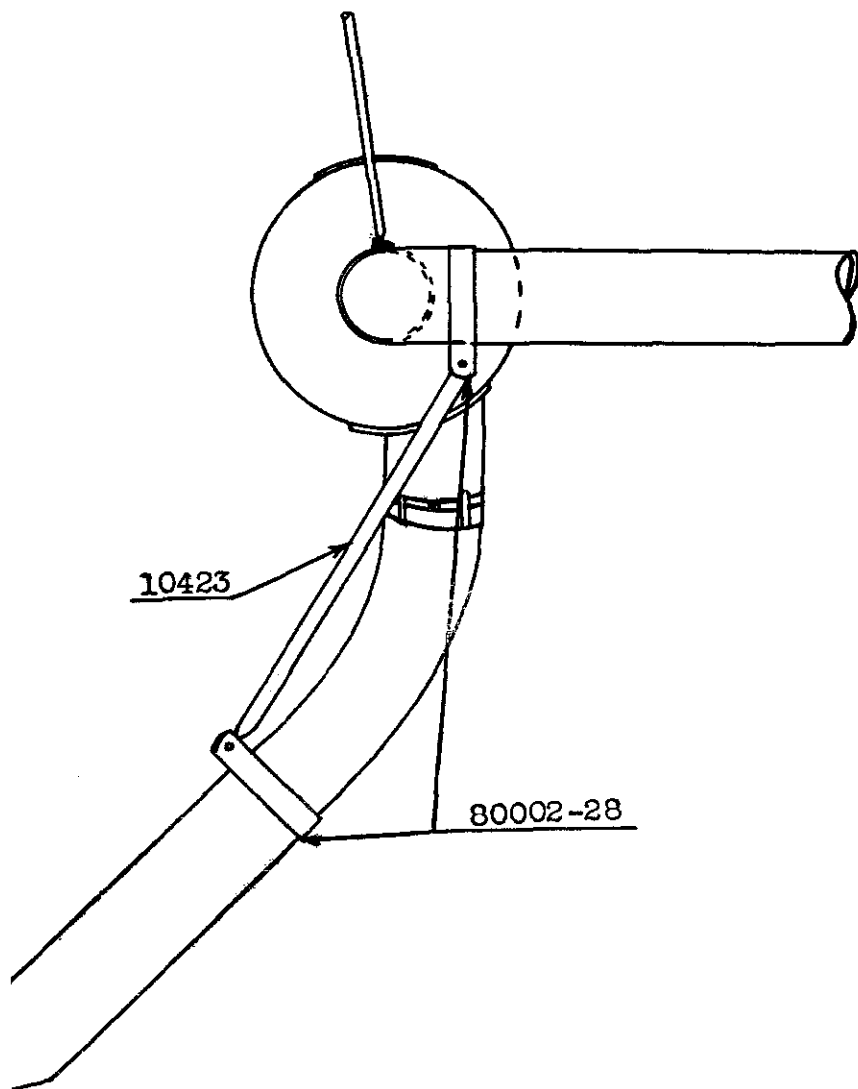
Loosen the present clamp, Part No. 80002-28, and brace tube, Part No. 10423, at both ends; remove the bolt from the lower end of the brace tube and slide the clamp and tube aft to the position as shown in the sketch. Attach the new brace tube, Part No. 10860, and additional clamp, Part No. 80002-28, as shown and adjust clamps on exhaust pipe as indicated. Tighten and safety the entire assembly.

NOTE: Prior to installing the additional brace, a complete inspection of the muffler assembly should be made by removing the shroud. If cracks are present anywhere on the muffler, it should be replaced.

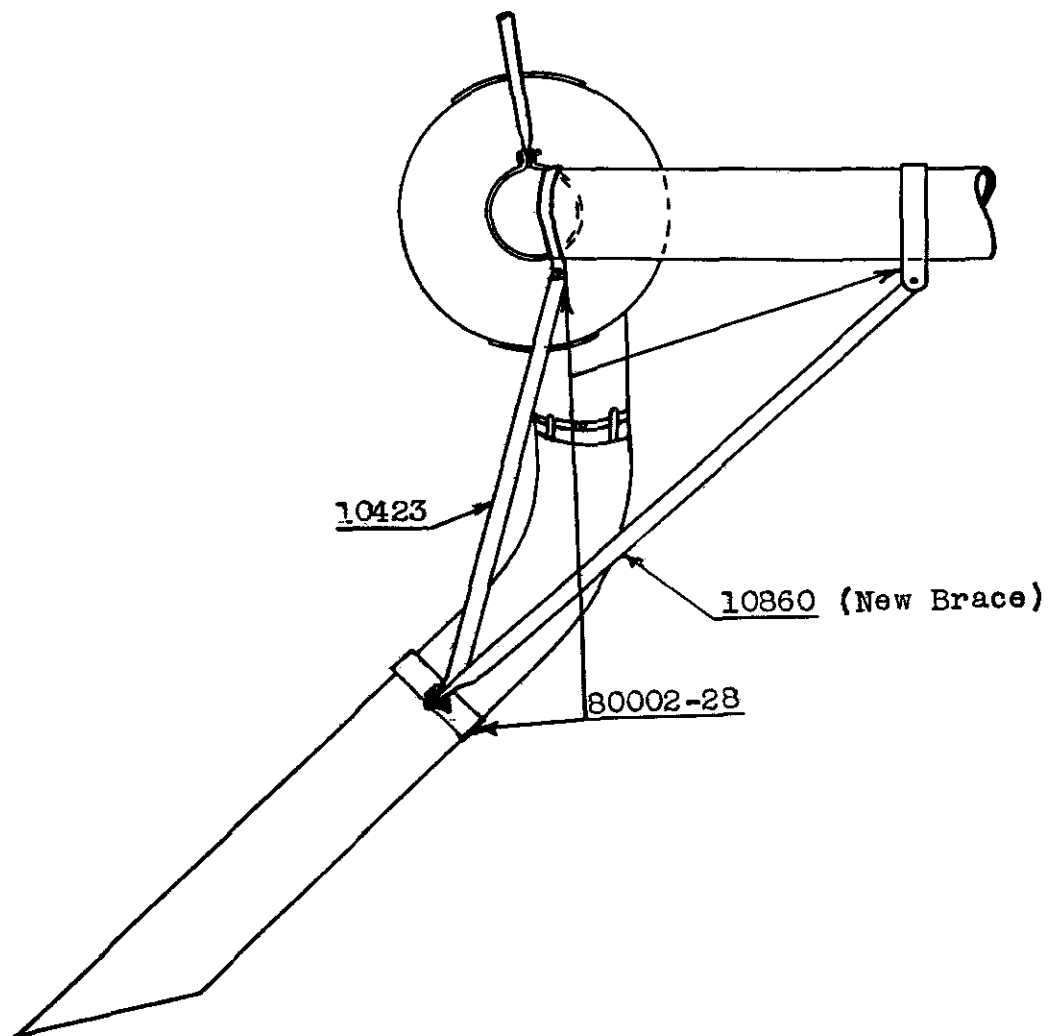
Parts can be obtained through your local Piper dealer, or distributor. Appropriate entries in log books should be made after completion of this change.

If you have sold your airplane, please forward this bulletin to the new owner.

PIPER AIRCRAFT CORPORATION, LOCK HAVEN, PA., U. S. A.



OLD BRACE INSTALLATION



NEW BRACE INSTALLATION