

## IMMEDIATE ACTION

# SERVICE



# BULLETIN

October 20, 1947

Bulletin No. 100

**SUBJECT:** PA-12 Cowling Interference

**TO:** Owners of Model PA-12 Airplanes Serial Nos. 12-1 to 12-1989 incl., 12-1991 to 12-1993 incl., 12-1997, 12-1999, 12-2001 to 12-3443 incl., 12-3445 to 12-3450 incl., 12-3452 to 12-3457 incl., 12-3461 to 12-3465 incl., 12-3481, 12-3535 to 12-3542 incl., 12-3553, 12-3901, 12-3903 to 12-3934 incl., 12-3936, 12-3940, 12-3941, 12-3943, to 12-3954 incl., 12-3961, 12-3964, to 12-3970 incl., 12-3988.

Some difficulty has been experienced with the PA-12 Cowl attachments loosening and allowing the nose cowl to bear against the starter ring-gear casting near the propeller hub; in some cases, actually severing the casting.

An immediate inspection should be made of the gear casting on your airplane, and if scoring deeper than 1/32" is found, the casting should be replaced.

To prevent the occurrence of this difficulty, we recommend that additional braces Part No. 11410 be installed according to the sketch shown on opposite side of this bulletin. These parts are available through your local Piper dealer or distributor.

A general tightening of all cowl attachments is also advised, and particular care should be exercised to "center" the cowl opening with the propeller shaft. Clearance at the starter shaft also should be assured.

Periodic inspection and maintenance of the cowl attachments will prevent the occurrence of this difficulty.

An appropriate entry should be made in the aircraft logbook when the recommended change has been made.

SERVICE DEPARTMENT  
PIPER AIRCRAFT CORPORATION

**PIPER AIRCRAFT CORPORATION, LOCK HAVEN, PA., U. S. A.**

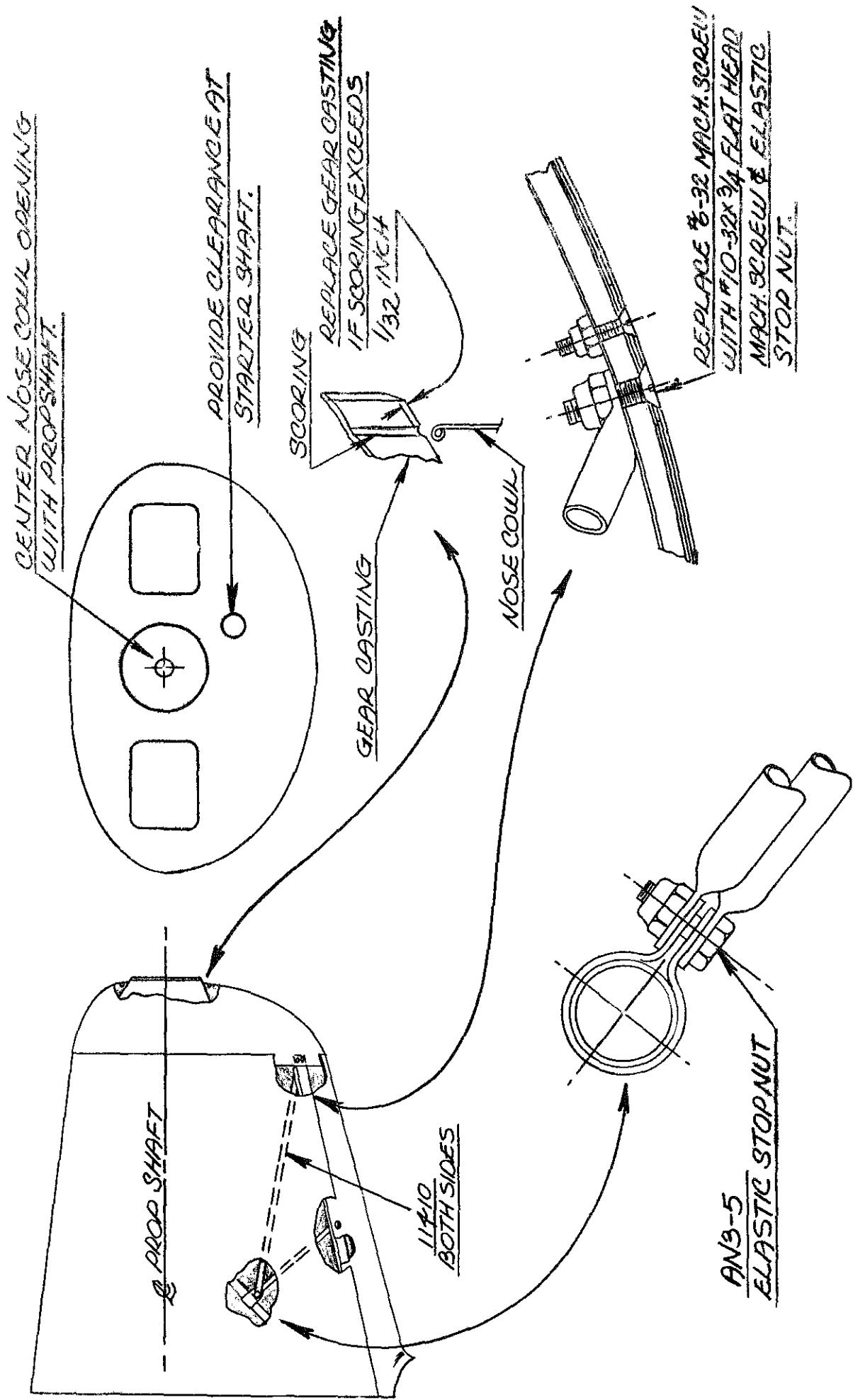


FIGURE 1  
COUIL BRACE INSTALLATION