

IMMEDIATE ACTION

SERVICE



BULLETIN

February 18, 1948

Bulletin No. 105

SUBJECT: MODEL PA-12 BATTERY HOLD-DOWN AND FUSE BLOCK

Model PA-12 Battery Hold-Down

To: All Owners of Piper Model PA-12 Serial Nos. 12-1 to 12-3000

On early model PA-12 airplanes the BATTERY HOLD-DOWN, when provided, consists of a metal bracket with fibre insulation at its lower end.

Reports have been received that the insulation in some cases has deteriorated, allowing the bracket to contact the battery terminals causing a short circuit.

To avoid the possibility of this occurring, we recommend that on all airplanes listed above, wooden blocks be installed as shown on the sketch on reverse side this bulletin.

An appropriate entry should be made in the aircraft log book when this change is accomplished.

These parts, numbers 84682-09 and 84682-08, one each required, are available through your local Piper Distributor or Dealer, at cost.

Model PA-12 Fuse Block

To: All Owners of PA-12 Airplanes Serial Nos. 12-1 to 12-3450 incl., 12-3452, 12-3454 to 12-3467 incl., 12-3469 to 12-3471 incl., 12-3473 to 12-3491 incl., 12-3493 to 12-3504 incl., 12-3506, 12-3507, 12-3511 to 12-3520 incl., 12-3522 to 12-3531 incl., 12-3533, 12-3535 to 12-3543 incl., 12-3545 to 12-3548 incl., 12-3553, 12-3901 to 12-3958 incl., 12-3960 to 12-3962 incl., 12-3965 to 12-3976 incl., 12-3983, 12-3984, 12-3988, 12-3990 to 12-3994 incl.

Reports have been received of arcing occurring between the fuse-clip and the wire attachment plate on the fuse block. These parts are held in contact by a rivet, which in some cases becomes loosened. As the arcing may cause premature fuse failure, we recommend the fuse block be removed from the airplane and revised as shown on sketch on reverse side this bulletin, or replaced with reworked part.

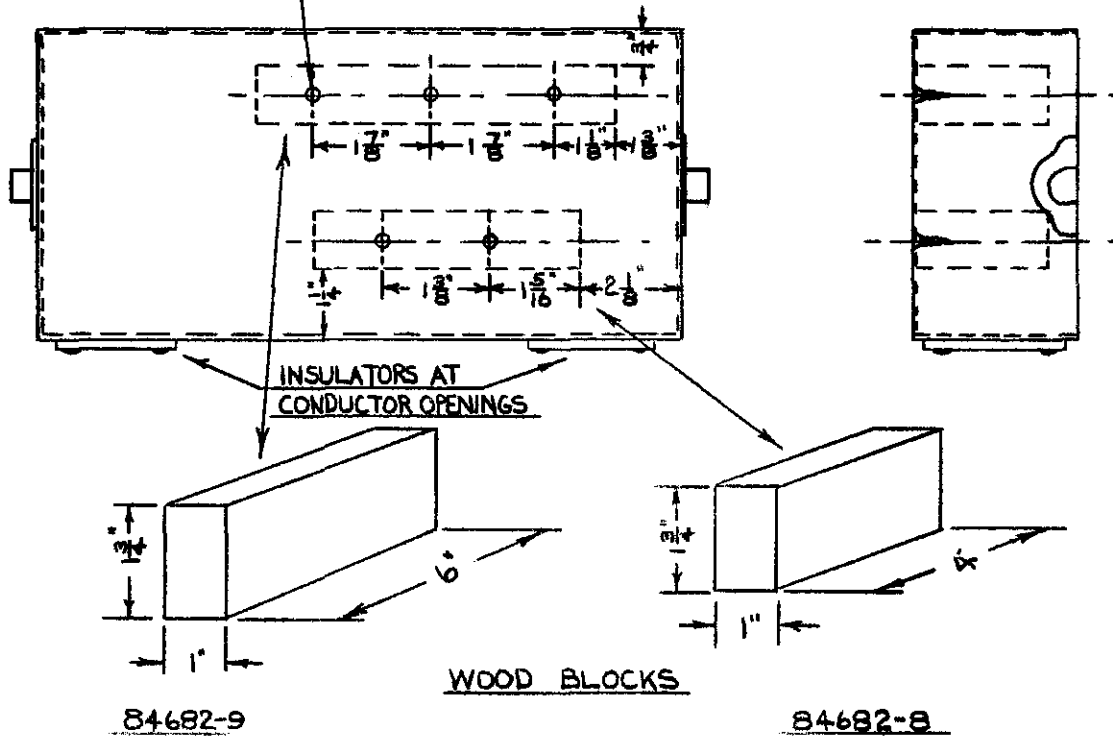
The fuse block is located just aft of the battery and is accessible thru the battery compartment door.

After removing fuse block from plane, the reworking may be done as follows:

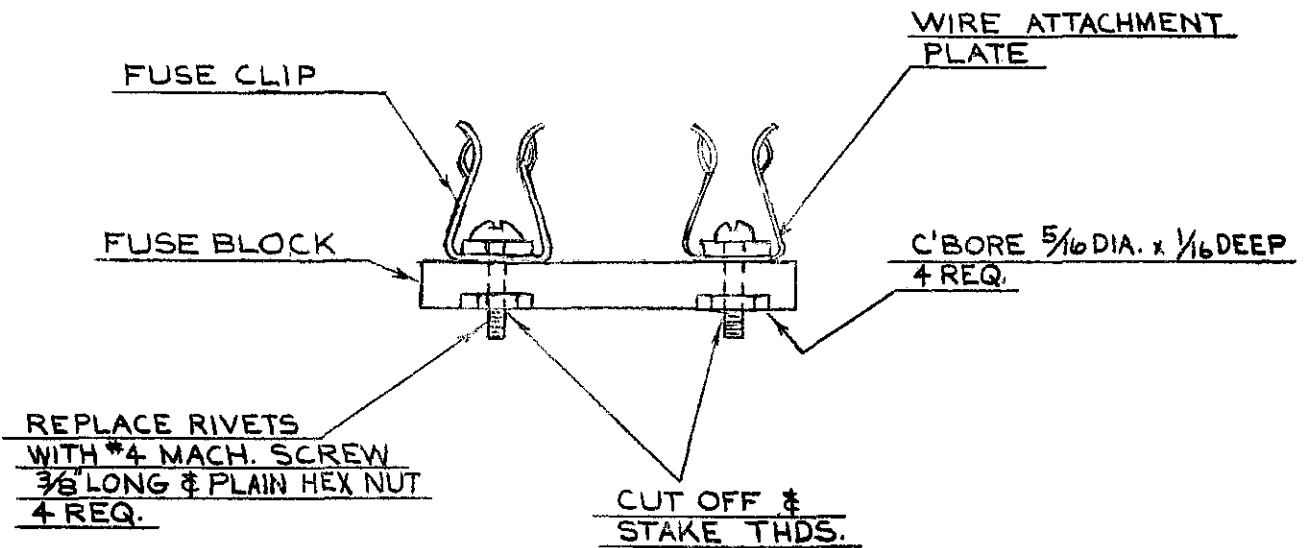
1. Punch out clip attaching rivets.
2. Counter bore fibre block 5/16 dia. x 1/16 at rivet holes. (Continued)

PIPER AIRCRAFT CORPORATION, LOCK HAVEN, PA., U. S. A.

1/13 HOLE IN COVER
*4 WOOD SCREW, 5 REQ.



BATTERY BOX COVER ASSEMBLY



FUSE BLOCK ASSEMBLY

February 18, 1948

Bulletin No. 105
(Continued)

SUBJECT: Model PA-12 Battery Hold Down and Fuse Block

3. Re-assemble using #4 machine screws and plain hex nuts in place of rivets.
4. Cut off excess screw length.
5. Stake threads (support screw head while staking).

An appropriate entry should be made in the Aircraft Log Book when this change is accomplished.

New fuse blocks, of the reworked type, Part No. 11718-00, one required, are available through your local Piper distributor or dealer, at cost.

SERVICE DEPARTMENT