

SERVICE



LETTER

Service Letter No. 188

April 11, 1952

TO: Distributors, Dealers and PA-18A Owners

SUBJECT: Flap Cable Installation

MODELS AFFECTED: PA-18A Airplanes with serial numbers 18-1248, 18-1262, 18-1266 to 18-1280 incl., 18 1283, 18-1286, 18-1287, 18-1299, 18 1302, 18-1308, 18-1309, 18-1311, 18-1313, 18-1315, 18-1319, 18-1320, 18-1321, 18-1322, 18-1325, 18-1326, 18-1327, 18-1654 and 18-1312.

It has been brought to our attention that there is a possibility of the flap cables on the PA-18A becoming fouled between the hopper and the diagonal fuselage tube.

The probability of fouling is very slight, however, and can only happen when either or both flaps are forced down without the use of the flap handle in the cockpit. When the flap is forced down it allows the cable to sag and slide down between the hopper and the fuselage tube.

We have a service fix for this particular problem and will make available to any PA-18 airplane owner, whose airplane bears one of the above listed serial numbers, our kit number 752 236 at No Charge. The time required to install this kit is approximately 15 to 20 minutes.

The following procedure should be used to install the kit:

1. Remove the two (2) round head machine screws as indicated in the sketch.
2. Using the baggage compartment door as an access hole, insert the lug which is attached to the spring between the longerons and the hopper cover support panel so that the hole in the lug lines up with the hole from which you removed the machine screw.
3. Reinsert the machine screws and tighten. (The assistance of a second person will be necessary to accomplish this.)
4. Attach the other end of the spring to the flap cable by inserting the end coil on the spring through the flap cable thimble hole at the front end of the turnbuckle.

All PA-18A production airplanes produced subsequent to the serial numbers listed have been modified.

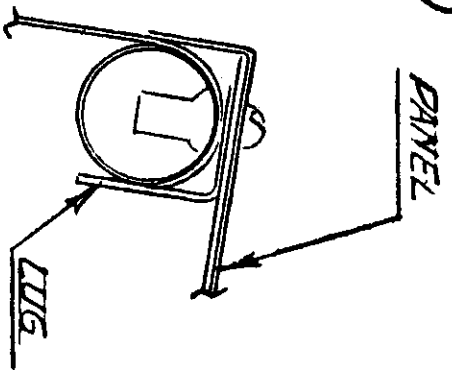
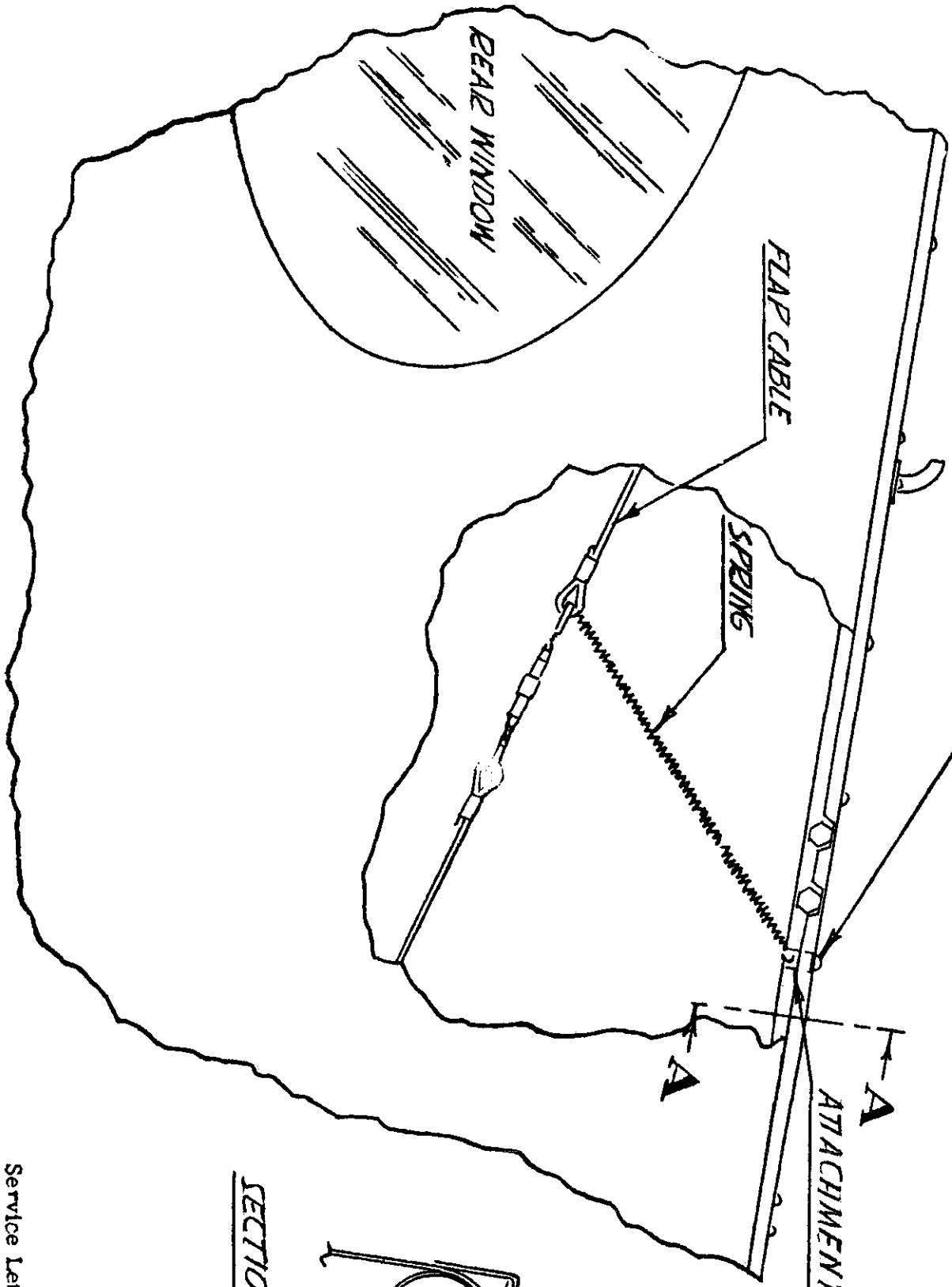
PIPER AIRCRAFT CORPORATION

PIPER AIRCRAFT CORPORATION, LOCK HAVEN, PA., U. S. A.

REMOVE THIS RD. HD. MACH
SCREW & INSERT LUG.

NOTE:

INSTALLATION IDENTICAL ON
BOTH SIDES OF AIRPLANE



SECTION A-A