

SERVICE

BULLETIN

Stinson 108
Service Bulletin #267

March 31, 1950

Subject: Fuel Seepage Into Cabin

To: All Owners of Piper Stinson Model 108, 108-1, 108-2 and
108-3 Airplanes

It has been noted that fuel overflow from the wing tanks tends to run towards the fuselage, creating the possibility of fuel seepage into the cabin.

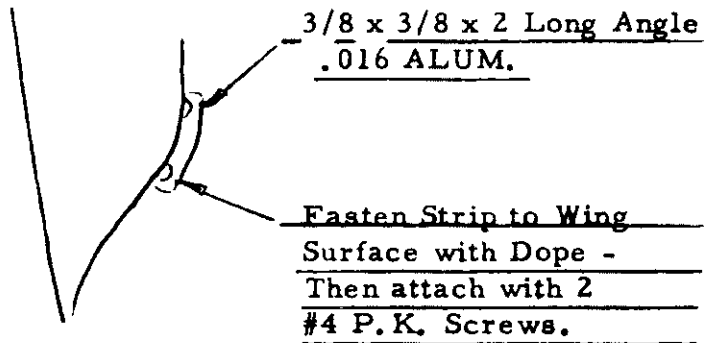
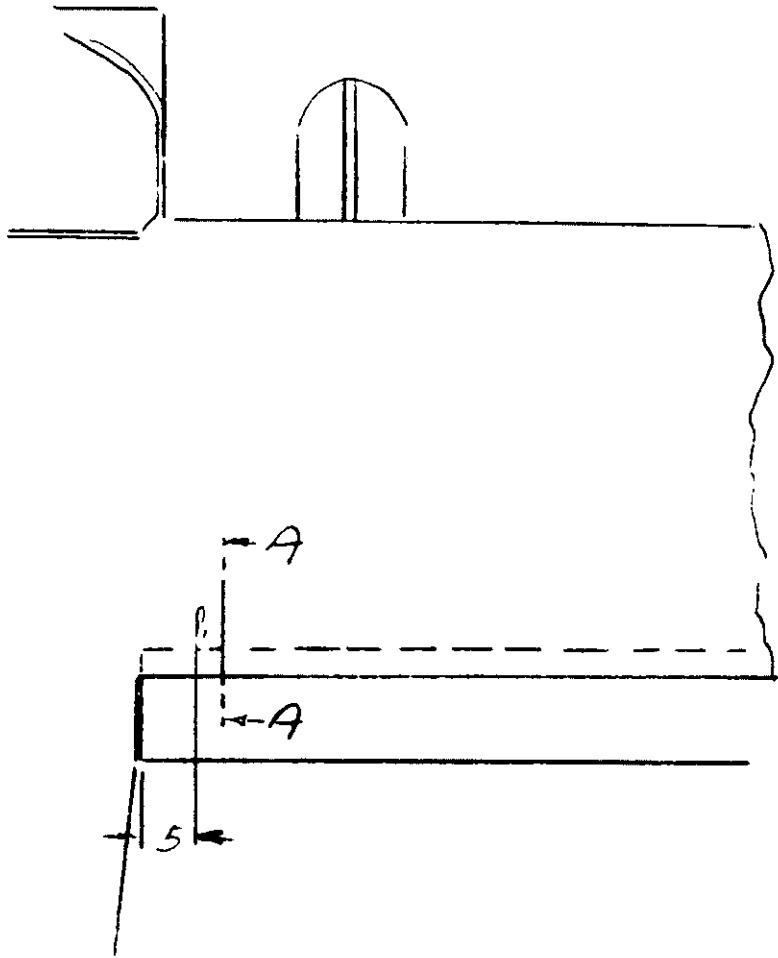
Fuel overflow runs to the under surface of the wing, adhering to the lower radius of the trailing edge of the wing ribs over the flap span. Due to wing dihedral, the fuel then runs to the fuselage and down across the window.

It is recommended that a drip strip similar to that shown in the sketch on opposite side, be applied to the under surface of the wing.

Any suitable strip may be applied in the location shown that will break adhesion of the fuel to the wing panel.

Rolland Boardman
Service Manager

RB:df



SECTION A - A