

Scott

**E
Q
U
I
P
M
E
N
T**

AIRCRAFT ACCESSORIES CATALOG

H-30D

PRINTED IN U. S. A.

ENGINEERED

FOR AVIATION



SCOTT AVIATION CORPORATION
Lancaster, New York, U. S. A.



General Information To Customers

Please place your orders, through Scott Distributors or Dealers, stating:

- a. Part number, name, type and quantity desired.
- b. Specify method of shipment—freight, air express, express, etc.
- c. When material is received carefully check the shipment, reporting any shortages to the shipper immediately; reporting any damaged shipments to the Carrier.

General Information To Distributors

See above, a, b, and c. Your attention also to the following will enable us to expeditiously and intelligently serve you.

Returning Material

Please do not ship material to us without our written acceptance unless for repairs, in which case please send us a repair order on day of shipment and enclose a copy in the shipment, stating apparent reason for returning. Prepay transportation charges.

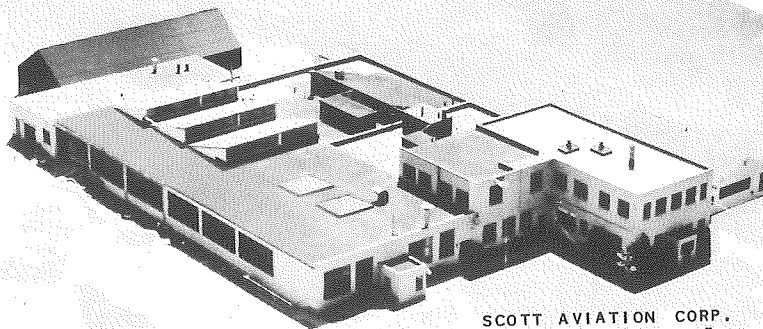
Transportation Liabilities

Scott Aviation Corporation cannot hold itself liable for damages to material in transit from the factory. If a shipment is received in a damaged condition, have the delivery man or transportation company make a notation of the damage and file your claim with the carrier. In case of concealed damage, do not attempt to remove the material from the shipping container or endeavor to repair it. Call the carrier and have the claim agent inspect the damage before filing your claim with the carrier.

For nearly a quarter of a century the name SCOTT has been a ready synonym for quality. This enviable reputation is the result of quality control throughout the manufacturing process. From blueprint to complete assembly each component part must exceed the industry's most exacting inspection standards.

SCOTT enjoys the role of pioneer . . . pioneer of air-worthy equipment designed and manufactured to give many years of troublefree service. SCOTT'S huge investment in research and development laboratories, inventive engineering, and modern, adequate facilities will continue to pay off for you in the exciting years ahead.

Yes, SCOTT is QUALITY.



SCOTT AVIATION CORP.
"ESTABLISHED 1932"

SCOTT TAILWHEEL PARTS
 ((IN STINSON STOCK))

Qty.	Part No.	Description
10	1825-43	Seal
	A2050	
	2085	Shim
40	2133	Clip
	CS2170	
	2247	Screw
30	2583	Rudder arm
20	2632	Spring
3	3239	Spring conn. kit
14	CS4050	Bearing
16	4041(4014)	Seal
2	4408	Master cyl.
1	4454	Cap, resevoir
14	4468	Washer
1	4476	Piston assy.
1	4477	Stem for MC
3	4479	Lug
20	4480	Spring
9	4481	Nut
10	4482	Spring
6	4483	Stop piston
13	4484	Lock

The name SCOTT has been a reality
 but is the result of quality control

AIRCRAFT WINDSHIELD CLEANER

Longer Life for your Windshield



**Clear Comfortable
Safer Vision!**

For preserving and cleaning plastic windshields. Non-abrasive. Will restore and maintain flexibility; helps prevent crazing and cracking. Restores visibility to old windshields by effacing mild scratches.

ACT NOW! Get a supply of the long-popular Scott Aircraft Windshield cleaner - **TODAY!**



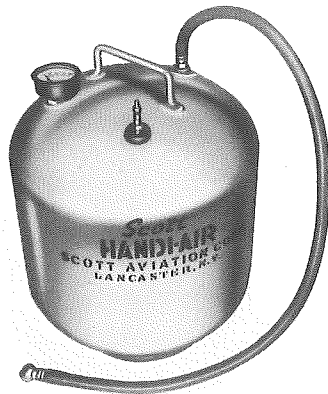
FURNISHED WITH CONVENIENT
SQUIRT - TOP! →



2 USEFUL SCOTT PRODUCTS YOU SHOULD HAVE IN YOUR HANGAR!

Handi-air

Brings the air to the airplane - -



Your Scott Handi-Air is a handy reservoir of compressed air that can readily be moved to location - whether in the hangar, on the apron, or out in the field.

The Scott Handi-Air outfit, weighing only 24 pounds, is quality built of light-weight steel, with pressure gauge and all the necessary connections. The tank is filled directly from your regular compressed air supply. One charging of the tank will inflate eight light plane tires - tops off a "hangar full".

PARTS LIST

Part No.	Name	No. Req.	Part No.	Name	No. Req.
2082	Handi-Air Complete		Schrader JJ	Ferrule	2
RM 2625	Gauge	1	Schrader 5495	Air Chuck	1
Schrader 645	Air Filler Valve Assy.	1	Schrader 6363	Male Coupling	1
2090	Hose Assembly	1	2713	Blow Gun	1

**Model
2082**

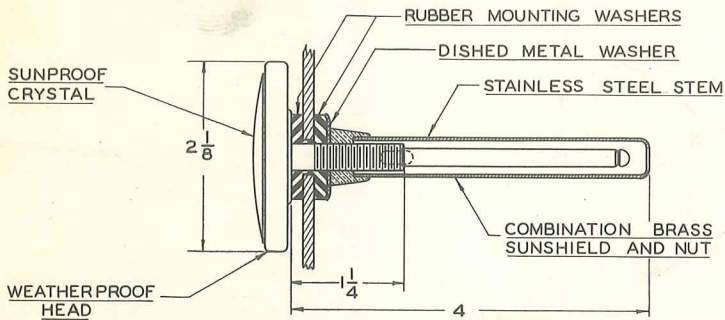




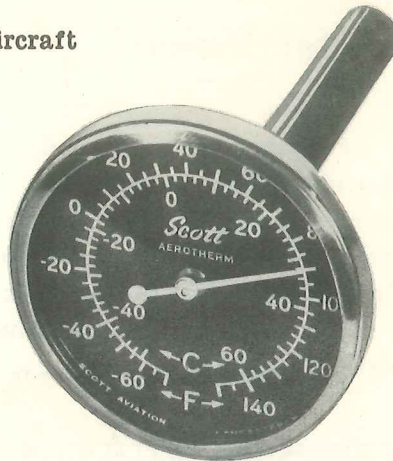
INSTRUMENTS and GAUGES

Air Temperature Gauge Model 2716

Has both Centigrade and Fahrenheit dial graduations.
Can be installed thru plexiglass windshield or cowling on most aircraft
and thru center strip of windshield on Beech Bonanza.



INSTALL THROUGH 3/8 DIA. HOLE



Engine Instruments

Oil Pressure Gauge



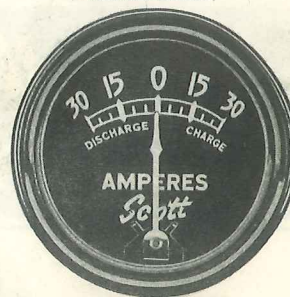
RN-2550

Range: 0 to 120 P.S.I.
For Panel Holes: 2-1/32" to 2-1/4"
Connection: 7/16-20 thread, flared tube fitting.

An accurate, but low priced instrument, automotive type, for light aircraft.

A rugged, trustworthy instrument for the economy minded light aircraft operator.

Ammeter

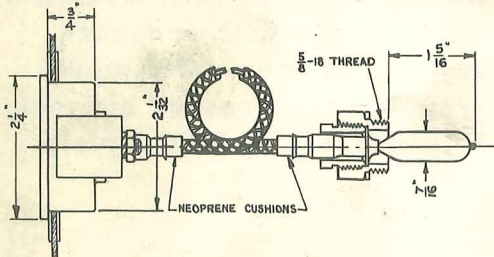


RN-4000

Range: 30-0-30
For Panel Holes: 2-1/32" to 2-1/4".

Oil Temperature Gauge

A dependable instrument, furnished with all parts and fittings necessary for installation.



Range: 100° to 250°.
For Panel Holes: 2-1/32" to 2-1/4".
Capillary Tube: 5 feet long with gasket and adapter to fit 5/8-18 female thread.

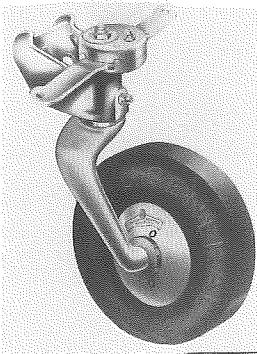


RN-2100

Case and bezel dimensions are same on all three instruments.
Two washers, Scott No. 2677, are furnished to adapt each instrument to panel holes from 2-1/32" dia to 2-3/4" dia.

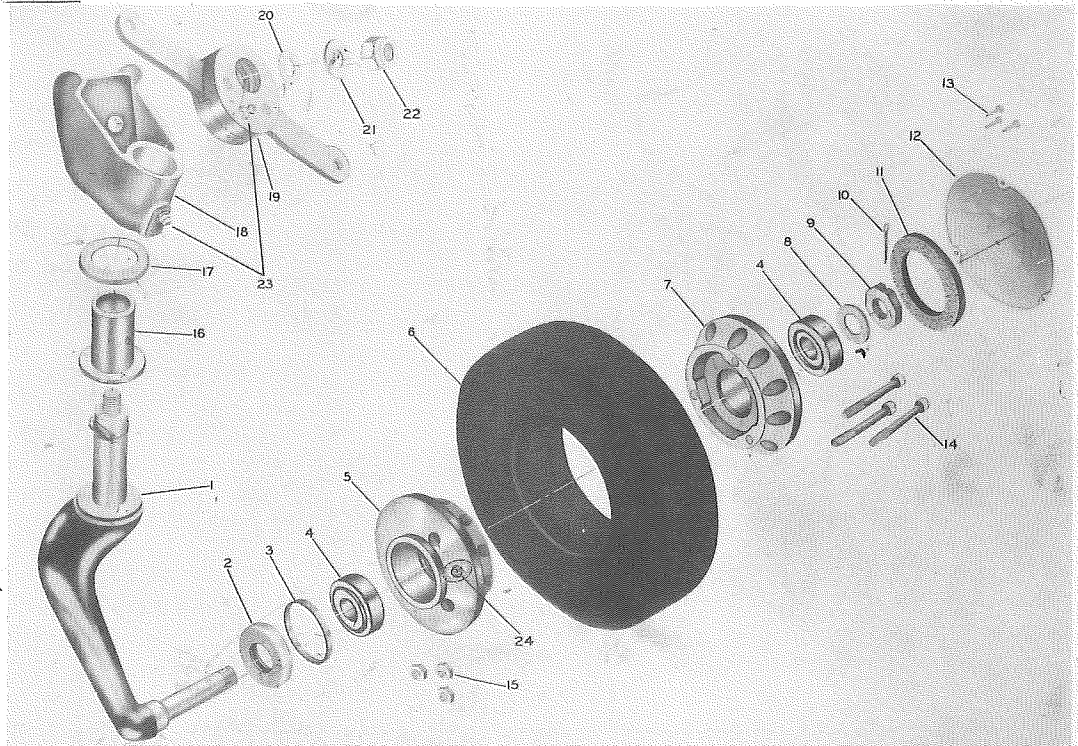


TAIL WHEEL ASSEMBLY with 6" solid rubber tire
Model 3-24B automatic steerable and full-swivel
3-24 BS For Stinson ONLY



A Rugged, Dependable Tailwheel
For All Light Aircraft

Standard Equipment On Over 70,000 Aircraft
Popular With Piper, Cessna,
Taylorcraft And Many Others



1860
 wheel assy

The 3-24B has an attaching bracket for 1-1/2" spring leaf. If required for use with 1-1/4" spring leaf, use No. 1478 Spacer and No. 1306 Adapter. If required for use with a 1-3/4" spring leaf, as on a Stinson, use Model 3-24BS.

PARTS LIST

Ref. No.	Part No.	Name	No. Req.	Ref. No.	Part No.	Name	No. Req.
1	2078	Fork	1	*18	2077	Bracket Assembly (includes Ref. Nos. 16, 17, & 23) for 1-1/2" Spring Leaf	1
2	1863	Retainer-Grease	1	18	3102	Bracket Assembly (for Tail Wheel Model 3-24BS) for 1-3/4" Spring Leaf	1
3	1862	Spacer-Grease Retainer	1	19	1709	Arm Assembly (includes Ref. No. 23)	1
4	1883	Timken Bearing Set	2	20	2085	Shim	as req.
5-7-24	1967	Hub Kit	1	21	2346	Washer	1
6	1879	Tire 6 x 2	1	22	AN364-720	Nut-Self Locking	1
8-9-10	1884	Axle Nut Kit	1	23	Com'l Sp'l	Fitting-Grease Alemite 1641	2
11-12-13	1882	Hub Cap Assembly	1	24	1300	Fitting-Grease (Refer.)	1
14-15	1875	Bolt & Nut Kit (Refer.)	1				
16	1800	Bushing	1				
17	1781	Cap-Bushing	1				

NOTE: Referenced numbers can be bought separately.

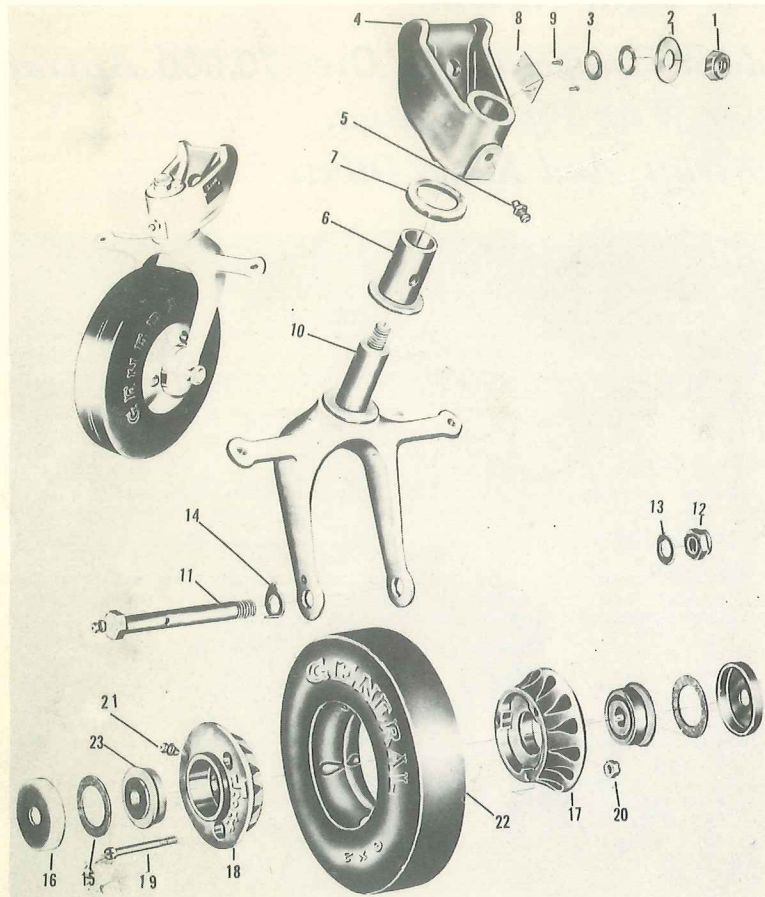




A LOW-COST UTILITY UNIT

steerable model 3000-A1

full-swivel model 3000-B2



NOTE

3000-A1 Model
Replaces Scott Models
CST-12 and 3-21

USES BRONZE SWIVEL BUSHINGS AND KILIAN BALL BEARINGS - RUGGED CAST STEEL CONSTRUCTION

PARTS LIST

Ref. No.	Part No.	Name	No. Req.	Ref. No.	Part No.	Name	No. Req.
1	AN364-720	Nut-Self Locking	1	11	1801	Axle	1
2	2346	Washer-Fork Post	1	11 to 14	1744	Axle Kit	1
3	2085	Shim	1 or 2	15	1803	Seal-Grease	2
4	2077	Bracket Assembly (includes Ref. Nos. 5, 6 and 7)	1	16	1364	Cap-Hub	2
5	Com'l Sp'l	Fitting-Grease Alemite 1641	1	17 to 21	1967	Hub Kit	1
6	1800	Bushing	1	-	1865	Wheel Assembly less tire	1
7	1781	Cap-Bushing	1	19-20 (Ref.)	1875	Bolts and Nuts (3 fillister head bolts and 3 self locking nuts for Scott Cast Wheels)	1
8	3004	Plate-Name	1	21	1300	Fitting-Grease (Ref.)	1
9	#0 x 3/16	Screw-Drive - P.K. Type U	2	22	1879	Tire	1
10	3001	Fork-Steerable	1	23	1421	Ball Bearing 7/16"	2
10	3006	Fork - Full-Swivel	1				

NOTE: Referenced numbers can be bought separately.



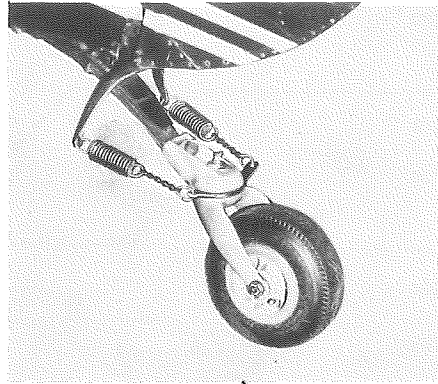
MODEL 3200 and 3250

8 INCH PNEUMATIC TAIL WHEEL ASSEMBLIES automatic steerable and full swivel

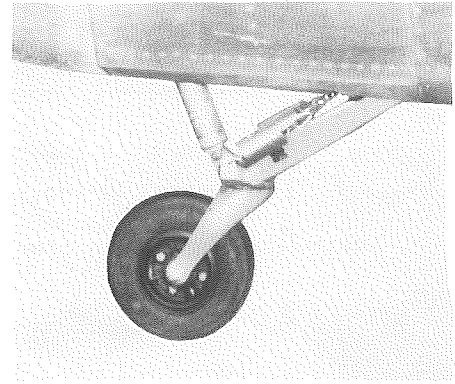


The finest TAILWHEEL in the WORLD

Ask the man WHO HAS ONE!



MODEL 3200 TAIL WHEEL ASSY.



MODEL 3250 TAIL WHEEL ASSY.

- Gives better visibility over the nose during taxiing.
- Positive steering control far beyond rudder travel. Releases easily and automatically when plane is reversed.
- Softer, quieter, shock-proof ride.
- Fully tested and C.A.A. Approved for most aircraft.
- Built of all precision-made parts to give years of dependable service.
- Has bearing and mechanism sealed to keep mud, water and sand out.
- 4 -ply heavy duty tire with inner tube made for rough service.
- There is no tension required on spring connectors excepting to remove slack. This reduces the constant load on rudder hinges and lessens the "load" on the rudder in flight.
- Timken bearings with Alemite grease fittings provided for lubrication.
- Streamlined and finished in baked enamel. Weight of assembly 7.5 lbs.

FOR	USE				
	3200 T. W. A.	3250 T. W. A.	3239 KIT	3241-1 KIT	3243-1
Stinson 108-1 108-2 and 108-3	1	-	1	-	
Cessna 120, 140, 140A, 170 and 170A	1	-	1	1	
Aeronca 15AC and S15AC	1	-	1	1	
Luscombe 11A	1	-	1	1	
Globe or Temco Swift	-	1	1	-	
Piper - Most Models	1		1		1

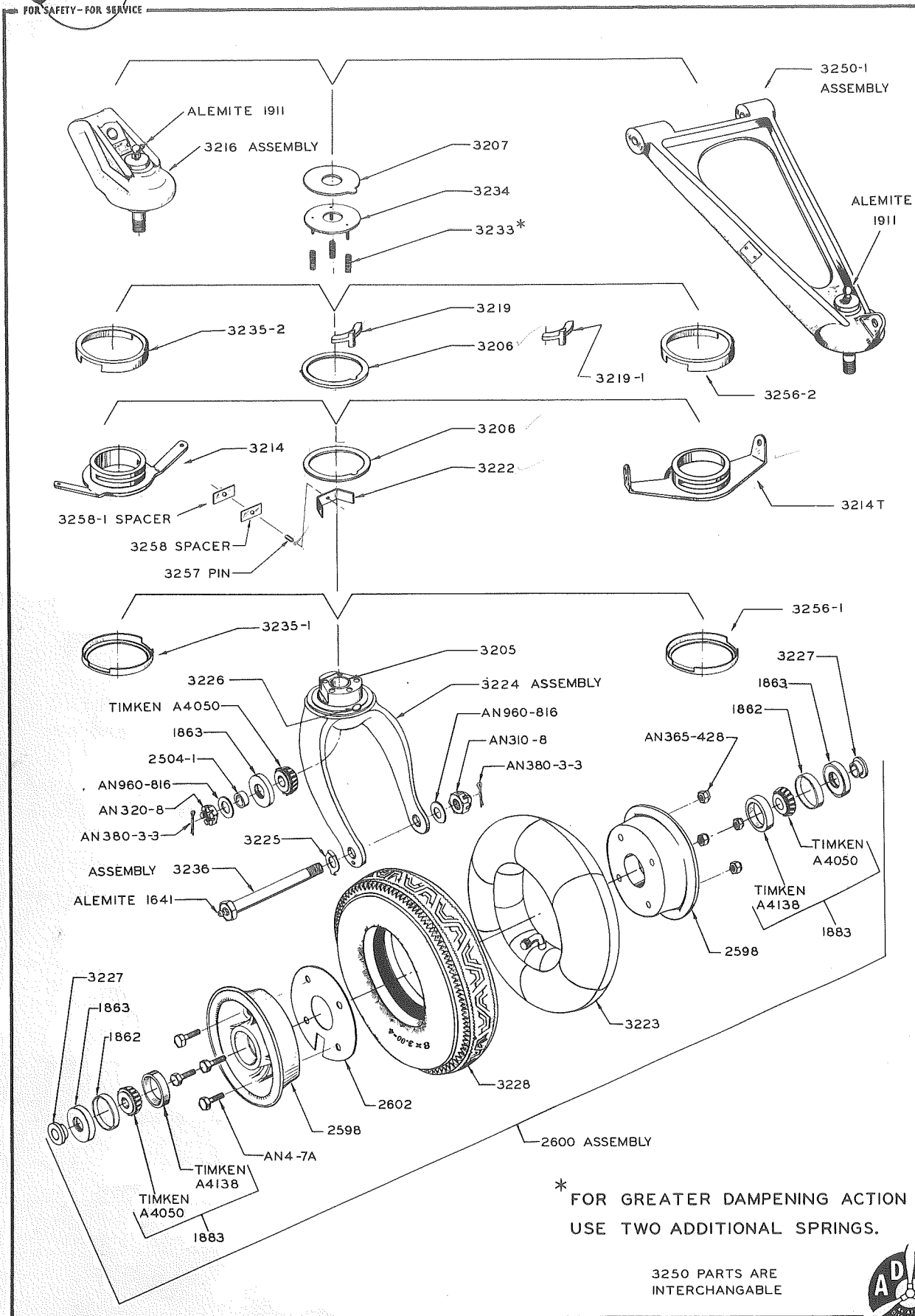


Tail Wheel attaching bolt, nut and washer not furnished.



MODEL 3200 and 3250 TAIL WHEEL ASSEMBLY

Maintenance Parts



* FOR GREATER DAMPENING ACTION
USE TWO ADDITIONAL SPRINGS.

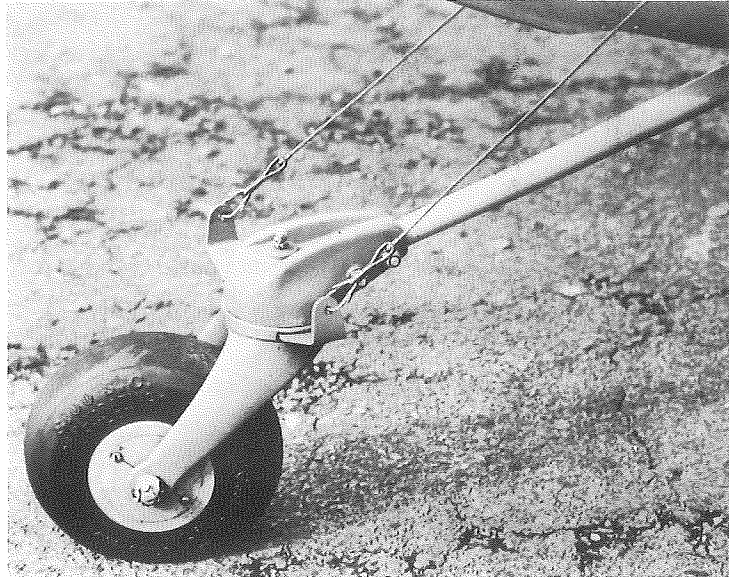
3250 PARTS ARE
INTERCHANGABLE



MODEL 3400

8 INCH PNEUMATIC TAIL WHEEL ASSEMBLY

automatic steerable and full swivel



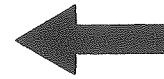
SCOTT MODEL 3400

TAILWHEEL SHOWN

ON CESSNA 180

8:00 SE

6PLY TIRE



ANOTHER RUGGED SCOTT TAILWHEEL ASSEMBLY

Similar to the Scott Model 3200 series tailwheels, the new Scott Model 3400 tailwheel combines the best features of all the Scott assemblies. It is the "heavyweight" of the line, and has been designed to provide the Cessna 180 owner with the finest, safest, most shock-proof tailwheel available.

Note These Features -

- Scott-cast 40E Aluminum alloy provides great strength with low weight, only 15 pounds 2 ounces as shipped.
- Newly designed heavy duty bearing and mechanism, sealed against entry of water, sand and mud.
- Alemite fittings provide positive lubrication to Timken bearings.
- 45° steering angle.
- Streamlined for low drag. Baked enamel finish for permanence and lasting beauty.
- Uses Cessna wheel and tire assembly No. 0742401 (Goodrich No. B-3-166). Unit is supplied by Scott less tire, tube and hub.



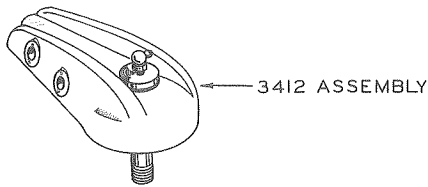
Unit is supplied as shown:
less tire, tube, hub.



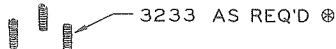


MODEL 3400 TAIL WHEEL ASSEMBLY

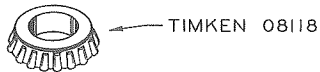
Maintenance Parts



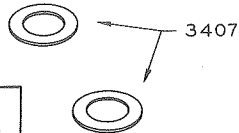
3412 ASSEMBLY



3233 AS REQ'D



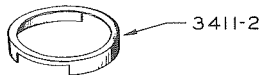
TIMKEN 08118



3407

ONE OR TWO MAY BE REQUIRED TO ESTABLISH INITIAL CLEARANCE BETWEEN 3412 AND 3413 ASSEMBLIES. OBTAIN FINE TOLERANCE BY USE OF 3408-1 PLASTIC WASHER AND 3408-2 PLASTIC WASHER. SEE NOTE BELOW.

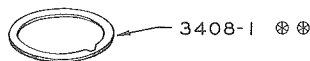
PARTS LIST		
Part No.	Name	No. Req'd.
1863	Retainer-Grease	1
2504-1	Spacer	1
3410	Arm Assembly	1
3412	Bracket Assembly	1
3219	Pawl	1
3222	Spring	1
3413	Fork Assembly	1
3225	Washer-Lock	1
3233	Spring-Compression (as required)	
3236C-2	Axle Assembly	1
3411-2	Dust Cap, upper	1
3411-1	Dust Cap, lower	1
3257	Pin	1
3258	Spacer	1
3258-1	Spacer	1
3407	Spacer	2
3408	Washer, steel	1
3408-1	Washer, plastic	1
3408-2	Washer, plastic	1
AN310-8	Nut-Aircraft Castle	1
AN320-8	Nut-Aircraft Shear	1
AN380-3-3	Pin-Cotter	2
AN960-816	Washer	2
Com'l. Sp'l.	Cone-Bearing, Timken No. A4050	1
Com'l. Sp'l.	Cone-Bearing, Timken No. 08118	1



3411-2



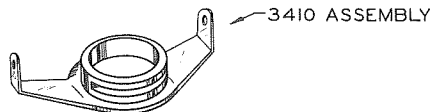
3408



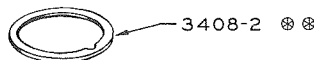
3408-1



3219



3410 ASSEMBLY



3408-2



3257 PIN

3258-1 SPACER



3411-1

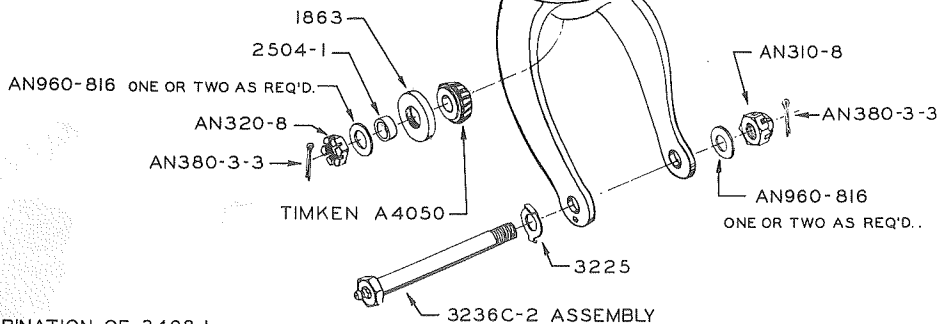


3258 SPACER



3222

3413 ASSEMBLY



⊗⊗ NOTE: ANY COMBINATION OF 3408-1 AND 3408-2 SPACERS MAY BE USED TO MAINTAIN CLEARANCE OF 004 TO 024 BETWEEN 3412 ASSEMBLY AND 3413 ASSEMBLY.

⊗ TO OBTAIN GREATER DAMPENING ACTION 3 TO 10 SPRINGS MAY BE USED.



SCOTT - GENERAL

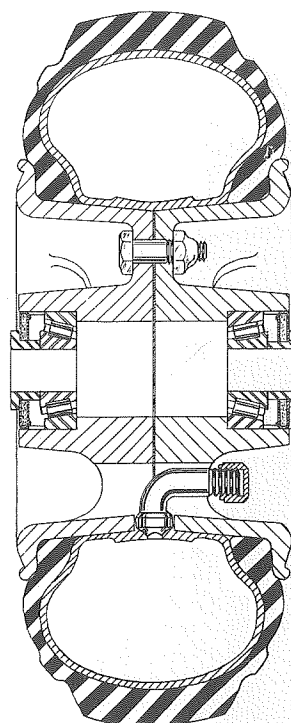
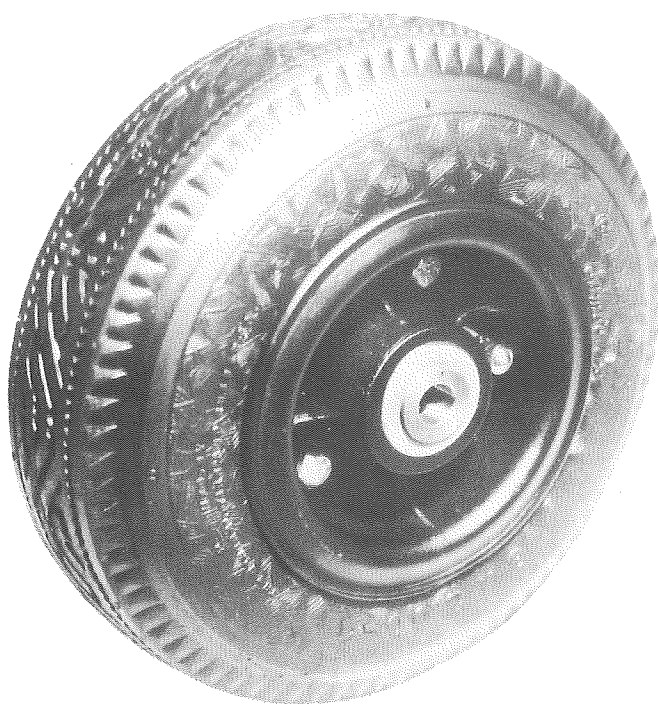
NO. 2600 8" WHEEL AND TIRE ASSEMBLY

Successfully used on the Scott 3200 Tail Wheel Assembly on many aircraft including the Cessna L-19, it is now available for general use. It is suggested for Helicopters, Liaison and Primary Training Aircraft and material handling devices where low weight and high strength are required.

LIGHT - only 3#-11 oz. including bearings.

STRONG - 2150# static load at 50# tire pressure.

INEXPENSIVE - The benefits of high volume production for Scott 3200 Tail Wheel Assemblies make possible a very attractive price.



Specifications

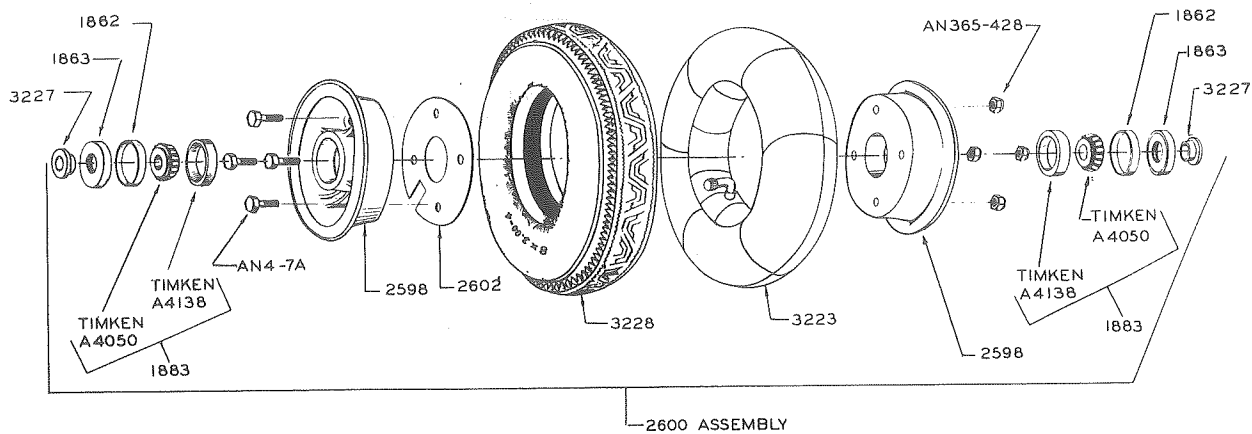
HUB - Cast magnesium. Designed for extremely heavy shock load absorption. One of its many uses is on tail wheel assemblies.

TIRE - General Jumbo Jr. 4 ply, with tube.

BEARING - Timken for 1/2" axle.

This assembly can be supplied complete and assembled, or supplied as a Hub only, unassembled, with gasket and bolts furnished. Complete specifications are on the reverse side of this sheet.

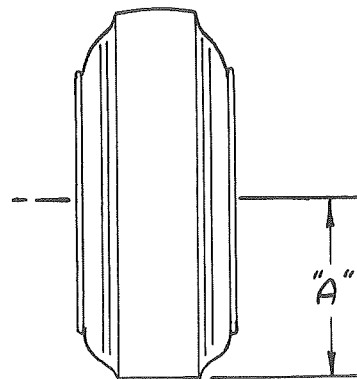
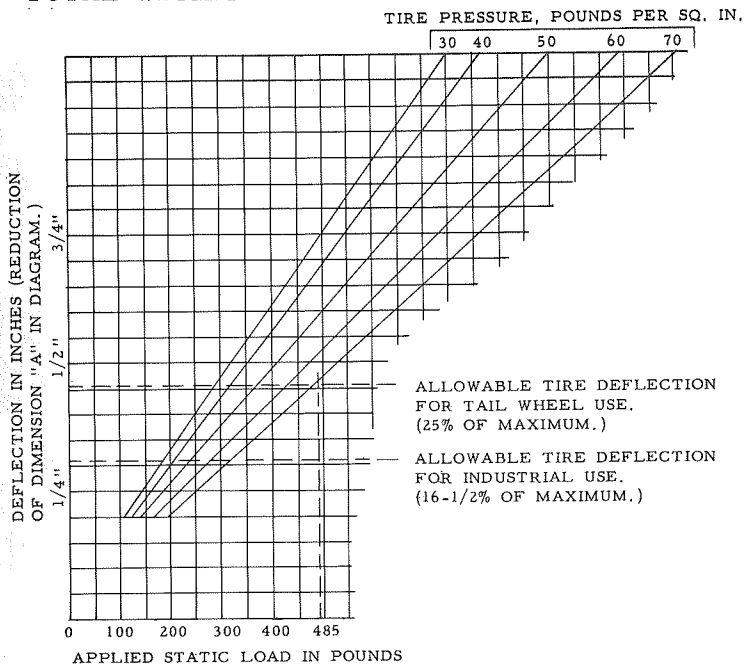
DATA ON SCOTT 8" PNEUMATIC WHEEL AND TIRE ASSEMBLY



Quantity	Pt. No.	Description	Weight
1	3228	Tire	26.75 Oz.
1	3223	Tube	8.00 "
1	2602	Gasket	.12 "
2	2598	Hubs	18.00 "
4	AN4-7A	Bolts and AN365-428 Nuts	1.48 "
2	A4138	Cups	1.50 "
2	A4050	Cones	2.50 "
2	1862	Spacers	.25 "
2	1863	Grease Retainers	.50 "
2	3227	Spacers	.12 "

TOTAL WEIGHT 2600 ASSEMBLY

59.22 or 3# 11 oz



Tire Deflection under load (shown as reduction of dimension "A") as load is applied using a given tire pressure, (see chart).

NOTE: A copy of our Static Test Report #389 witnessed by CAA is also available.

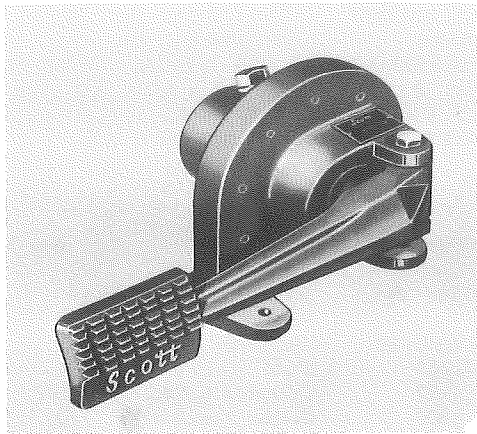


MODEL B-711 MASTER CYLINDERS

The largest selling aircraft master



cylinder in the world



Model B-711

Standard equipment on Piper and other aircraft for many years.
Rugged and trouble-free.
Few wearing parts.

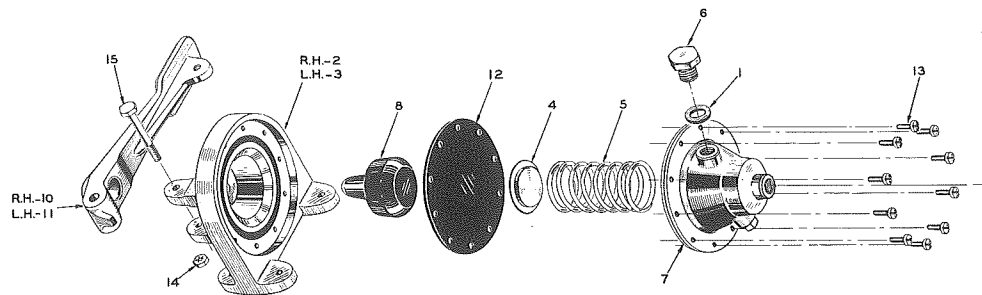
SPECIFICATIONS

Displacement	.80 cu. in.
Maximum working Pressure	350 lbs.
Pedal Pressure	100 lbs.
Recommended Hydraulic Fluid	AN-VV-O-366E
Weight as shown	21 oz. dry wgt.

Note: On most aircraft one pair of B-711 Master Cylinders are required, one left and one right; on the Piper Tri-Pacer only one cylinder is used, the left hand Part No. 1248-H.

See 4200 Valve Data Sheet (Page 14) for full information on combinations of the B-711 with the 4200 Parking Brake Valve.

Model B-711



PARTS LIST

Ref. No.	Part No.	Name	No. Req.	Ref. No.	Part No.	Name	No. Req.
✓1	1159	Gasket-Vent Screw	1	✓8	1383	Piston	1
2	1220	Bracket - R. H. Unit	1	10	1712	Pedal - R. H. Unit	1
3	1232	Bracket - L. H. Unit	1	✓11	1714	Pedal - L. H. Unit	1
✓4	2003	Pad-Diaphragm	1	✓12	1751	Diaphragm	1
✓5	1256	Spring	1	13	AN500-8-8	Screw	10
✓6	1258	Screw-Vent	1	14	AC356-1032	Lock Nut	1
✓7	2728	Cover-Compression	1	15	AN3-15A	Bolt-Aircraft	1





MASTER CYLINDERS

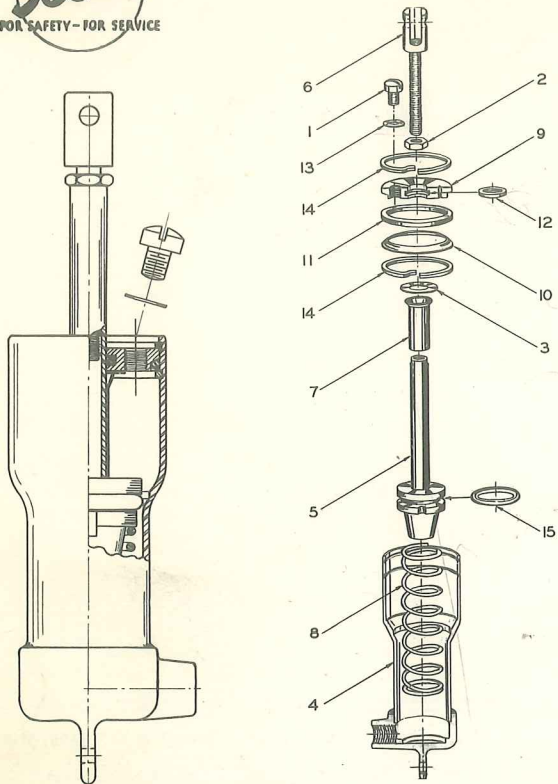
Model 4000

SPECIFICATIONS

DISPLACEMENT	1.2 CU. IN.
CAPACITY	.90 CU. IN.
PISTON DIAMETER	1-1/16 IN.
OUTPUT PRESS.	2.5 x APPLIED FORCE
EMPTY WEIGHT	13 OZ.
DESIGNED TO OPERATE AT	250 P.S.I.

PARTS LIST

Ref. No.	Part No.	Name	No. Req.
1	Com'l Std.	Screw - Fillister Head 1/4-28 x 1/4 long.	1
2	AN316-4R	Nut Lock	1
3	1867	Shim	as req.
4	4001	Cylinder & Cap Assembly	1
5	4005	Piston Assembly	1
6	4008	Rod-Piston Clevis	1
7	4009	Stop-Piston	1
8	4010	Spring-Piston Return	1
9	4011	Cover-Reservoir	1
10	4012	Washer-Retaining	1
11	4013	Seal-Reservoir Cover	1
12	4014	Seal-Piston Stem	1
13	4015	Gasket-Filler Screw	1
14	4016	Ring-Snap	2
15	AN6227-16	O-Ring	1



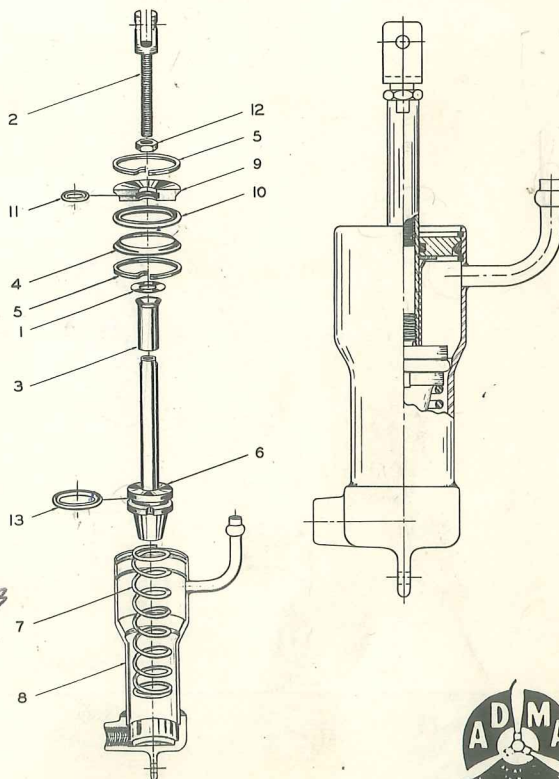
Model 4350

SPECIFICATIONS

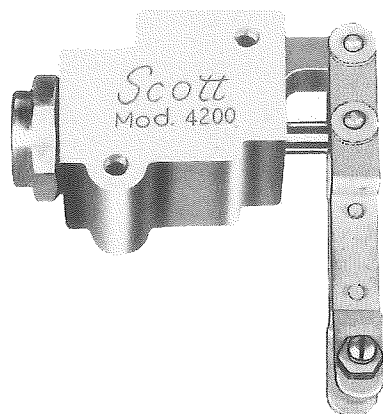
DISPLACEMENT	1.2 CU. IN.
CAPACITY	.90 CU. IN.
PISTON DIAMETER	1-1/16 IN.
OUTPUT PRESS.	2.5 x APPLIED FORCE
EMPTY WEIGHT	13 OZ.
DESIGNED TO OPERATE AT	250 P.S.I.

PARTS LIST

Ref. No.	Part No.	Name	No. Req.
1	1867	Shim	as req.
2	4008	Rod-Piston Clevis	1
3	4009	Stop-Piston	1
4	4012	Washer-Retaining	1
5	4016	Ring-Snap	2
6	4305	Piston Assembly	1
7	4310	Spring-Piston Return	1
8	4351	Cylinder & Cap Assembly	1
9	4361	Cover-Reservoir	1
10	Com'l Sp'l	O-Ring Linear 1820-23 - 6227-23 Style MJ-70	1
11	Com'l Sp'l	O-Ring Linear 1820-7 - 16227-7 Style MJ-70	1
12	AN316-4R	Nut-Lock	1
13	AN6227-16	O-Ring	1



SERIES 4200 VALVES



Originally designed and widely used as a hydraulic parking brake lock valve. The 4200 has also been successfully used as a helicopter rotor brake valve, gas line, shut-off valve, pneumatic pressure on-off valve, and in many other applications.

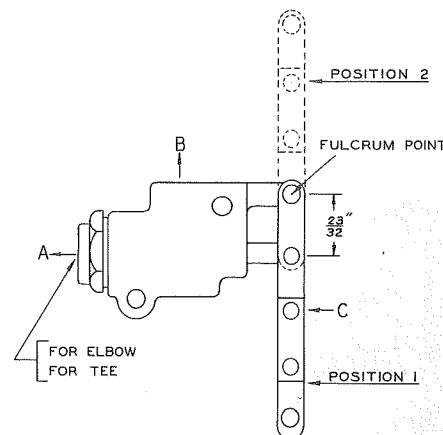
Designed for easy installation, produced from extruded bar stock for high strength and uniformity, and machined to fine tolerances to assure reliable performance. Each valve tested at 1500 psi.

GENERAL SPECIFICATIONS

Designed to be used with hydraulic fluids
Spec. No. AN-VV-0-366B

Test Pressure 1500# Weight .30 Lbs.

Minimum Working Pressure 15#



TYPES AVAILABLE

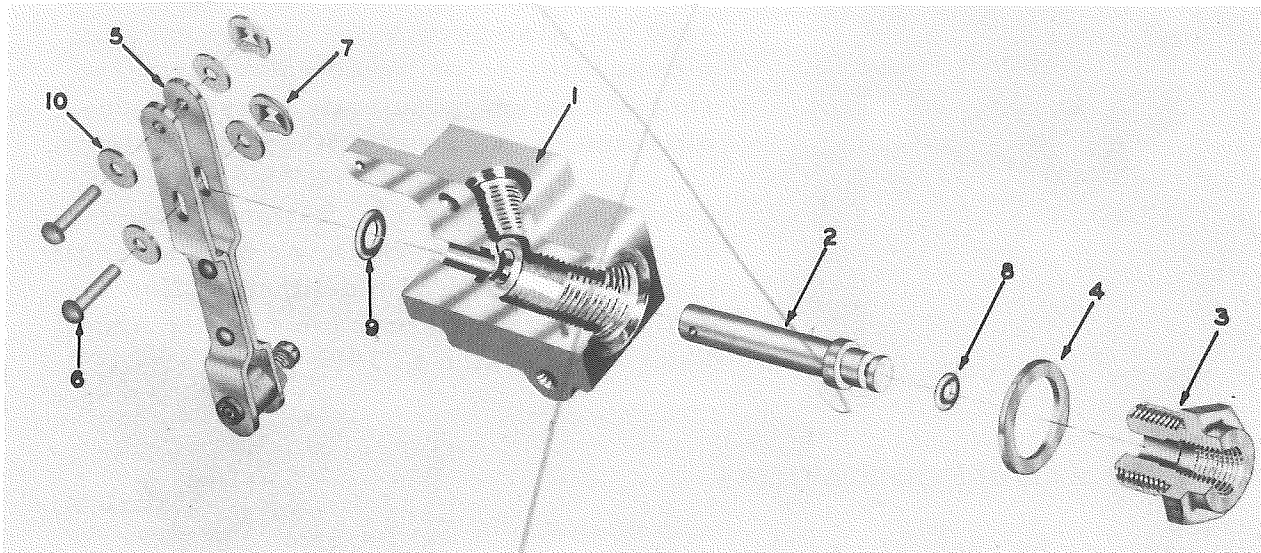
MODEL NO.	A	B	C (Control Arm)
4200	1/8 NPT	1/8 NPT	No arm
4200-A1	1/8 NPT	1/8 NPT	Position 1
4200-A2	1/8 NPT	1/8 NPT	Position 2
4200 C	3/8 - 24 NF	3/8 - 24 NF	No arm
4200 C-A1	3/8 - 24 NF	3/8 - 24 NF	Position 1
4200 D	1/8 NPT & AN 822-4D Elbow (7/16-20 Male Thd. for 1/4 O.D. tubing)	1/8 NPT	No arm
4200 D-2	1/8 NPT & AN826-4D Tee (7/16-20 Male Thd. for 1/4 O.D. tubing)	1/8 NPT	No arm
4200 D-A1	1/8 NPT & AN822-4D Elbow (7/16-20 Male Thd. for 1/4 O.D. tubing)	1/8 NPT	Position 1
4200 D2-A1	1/8 NPT & AN826-4D Tee (7/16-20 Male Thd. for 1/4 O.D. tubing)	1/8 NPT	Position 1
4200 S	7/16-20 NF	7/16-20 NF	No arm
4200 S-A1	7/16-20 NF	7/16-20 NF	Position 1
4200 S-A2	7/16-20 NF	7/16-20 NF	Position 2

Made expressly for and available only from Beech Actf.





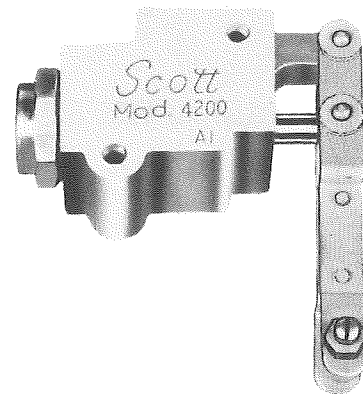
SERIES 4200 VALVES



PARTS LIST

No.	Part No.	Used on	Name	No. Req'd
1	4201	{ 4200 4200-A1 4200-A2	Body	1
	4212	{ 4200C 4200C-A1	Body	1
	4212S	{ 4200S 4200S-A1 4200S-A2	Body	1
2	4203		Stem Assembly	1
3	4206	{ 4200 4200-A1 4200-A2	Seat - Valve	1
	4213	{ 4200C 4200C-A1	Seat - Valve	1
	4213S	{ 4200S 4200S-A1 4200S-A2	Seat - Valve	1
4	4207		Gasket - Valve Seat	1
5	4208		Arm Assembly	1
6	Com'l Std.		Rivet 3/32 x 5/8 RH Steel	2
7	Com'l Std.		Nut - Speed Tinnerman 1553-M1	2
8	AN6227-1		O-Ring 1/4 O.D. x 1/8 I.D.	1
9	AN6227-5		O-Ring 3/8 O.D. x 1/4 I.D.	1
10	AN940-13		Washer - Burr Steel	4

ASSEMBLY OF MODEL 4200-A1



SERIES 4225 VALVES

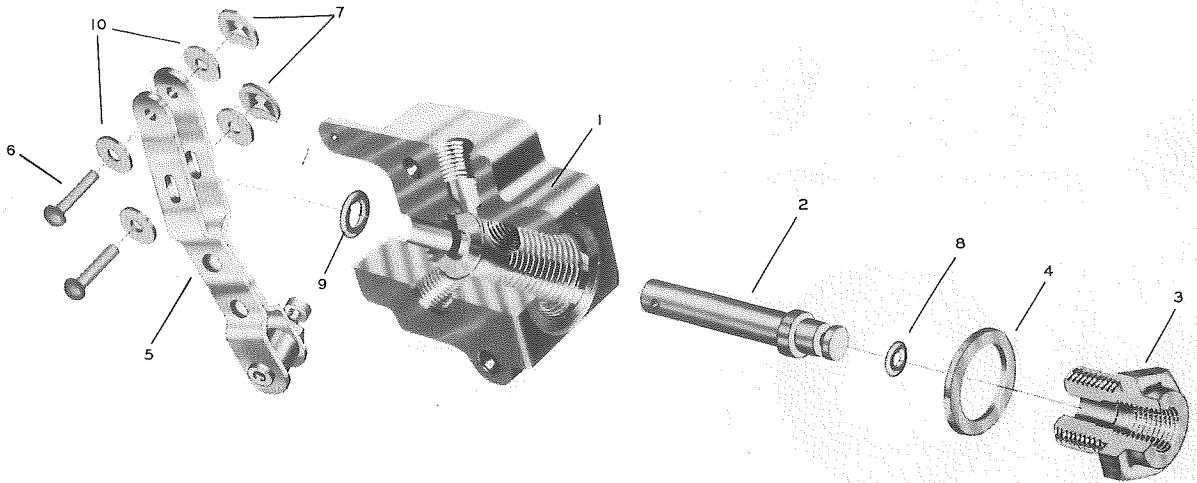


NOW BEING USED IN THE PIPER TWIN "APACHE" AS A GAS LINE SHUT-OFF VALVE

All components resistant to gasoline

Note mounting holes in valve body

Unit is easily adaptable to any installation



PARTS LIST

Ref. No.	Part No.	Name	No. Req.
1	4226	Body	1
2	4203	Stem Assembly	1
3	4206	Seat-Valve	1
4	4207	Gasket-Valve Seat	1
5	4225-B1	Arm Assembly (shown)	1
6	Com'l Std.	Rivet 3/32 x 5/8 RH Steel	2
7	Com'l Sp'l.	Nut-Speed Tinnerman #1553-M1	2
8	Com'l Sp'l.	O-Ring Linear Lex-60-0 MS-29513-10	1
9	Com'l Sp'l.	O-Ring Linear Lex-60-0 MS-29513-6	1
10	AN940-13	Washer-Burr 3/32 I.D. x 3/8 O.D.	4

GENERAL SPECIFICATIONS

Designed to be used with hydraulic fluids
Spec. No. AN-VV-O-366b and aromatic
aviation fuels.

Test Pressure 1500#
Weight .33#
Maximum Working Pressure 15#

TYPES AVAILABLE

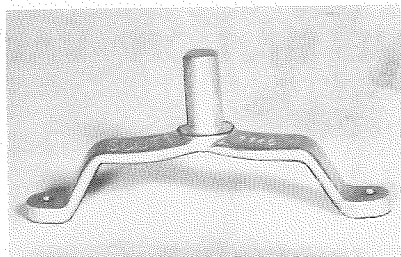
4225-A1	Three 1/8 ANPT Tapped Holes	Arm Down
4225-A2	Three 1/8 ANPT Tapped Holes	Arm Up
4225	Three 1/8 ANPT Tapped Holes	No Arm
*4225-B	Three 1/8 ANPT Tapped Holes	No Arm
4225-B1	Three 1/8 ANPT Tapped Holes	Arm Up (Bent Left)
4225-B2	Three 1/8 ANPT Tapped Holes	Arm Up (Bent Right)

* Note: 4225-B includes Washer, Tinnerman Nut and Rivet.



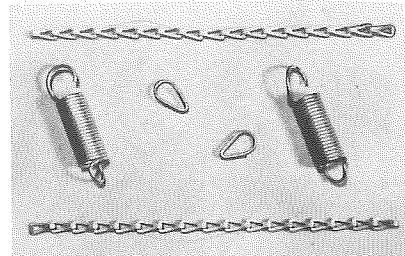


REPLACEMENT PARTS for SCOTT TAIL WHEEL ASSEMBLIES



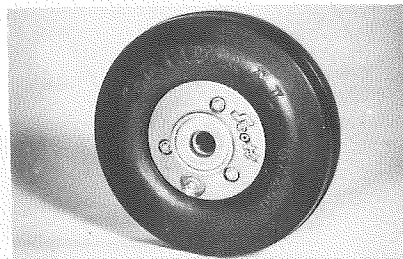
1140 RUDDER ARM

Originally designed for use on the Piper J-3, J-4, J-5 and PA-11. Currently being used on the PA-18 Series and the L-21B.



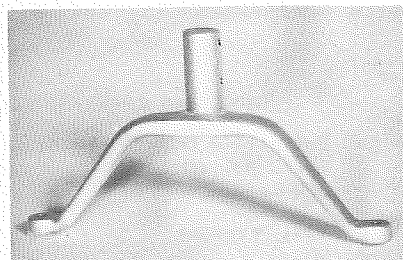
2151 SPRING CONNECTORS

Commonly used in conjunction with 3-24B and 3000-A1 Tailwheel Installation on numerous light aircraft such as Piper J-3, J-4, J-5, and L-14.



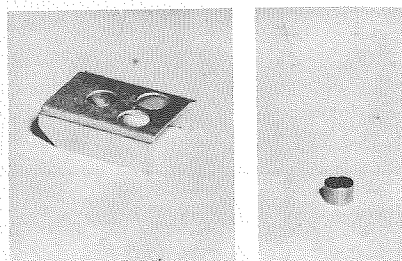
1840 WHEEL ASSEMBLY

This assembly comprises the 1967 Wheel and the 1879 Tire used on 3-24B and 3-24BS Tailwheels.



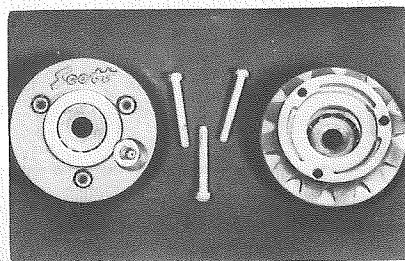
2622 RUDDER ARM

This arm originally designed for tailwheel installation on Aeronca. Used in conjunction with 3-24B Tailwheel.



1478 SPACER - 1306 ADAPTER

Used to adapt 3-24B, 3000-A1 and 3000-B2 Tailwheel Assemblies to 1-1/4" Tail Spring and 3/8" bolt.



1865 WHEEL ASSEMBLY LESS TIRE

This assembly is a component of the 1871 Wheel Assembly.



SCOTT AIRCRAFT ACCESSORY PARTS PRICE LIST

CATALOG H-30D

Dated October 1, 1954

<u>PART NO.</u>	<u>DESCRIPTION</u>	<u>STD. BOX QUANTITY</u>	<u>PRICE</u>
Coml. Std.	Close Nipple for 2715 Series Kit (1/8" NPT)		.20
Coml. Std.	Drive Screw for 3000 Series Tailwheel Assembly (#0 x 3/16) P.K. Type U.		.02
Coml. Std.	Nut - Hex. for 4408 Master Cylinder (6-32 NC-2)		.02
Coml. Std.	Rivet for 4200-A1 Valve (3/32 x 5/8) Round Head	4	.02
Coml. Std.	Screw - fillister head for 4408 Master Cylinder (1/4-28 x 3/8)		.06
Coml. Std.	Screw - R.H. PK Type A for 2715 Kit (#4 x 1/4")		.02
Coml. Std.	Set Screw for 4408 Master Cylinder (6-32 x 3/8)		.20
Coml. Std.	Speed Nut - Tinnerman #1553-M-1 for 4200 Valve	4	.03
Coml. Std.	Street Elbow for 2715 Kit (45°)		.50
Coml. Sp ¹ .	Air Chuck for Handi-Air (Schrader #5494)		1.00
Coml. Sp ¹ .	Air Filler Valve Assembly for Handi-Air (Schrader #645)		.60
Coml. Sp ¹ .	Bearing Cone, Timken No. 08118 (3400 Tailwheel Assembly)		2.93
Coml. Sp ¹ .	Bearing Cone of 1883 Timken Bearing (A4050) for 8" Tailwheel Assembly	10	1.60
Coml. Sp ¹ .	Bearing Cup of 1883 Timken Bearing (A4138) for 8" Tailwheel Assembly.	10	1.40
Coml. Sp ¹ .	Ferrule for Handi-Air Hose (Schrader JJ)	1	.15
Coml. Sp ¹ .	Grease Fitting for 3000 Series, 3-24B and 8" Tailwheel Assemblies (Alemite #1641)	25	.20
Coml. Sp ¹ .	Grease Fitting for 8" Tailwheel Assembly (Alemite #1911)	5	.45
Coml. Sp ¹ .	Male Coupling for Handi-Air Hose (Schrader #6363)		.50
Coml. Sp ¹ .	O-Ring Style MJ-70 for 4350 Master Cylinder (#1820-7)		.50
Coml. Sp ¹ .	O-Ring Style MJ-70 for 4408 Master Cylinder (#1820-11)		.50
Coml. Sp ¹ .	O-Ring Style MJ-70 for 4350 Master Cylinder (#1820-23)		.50
Coml. Sp ¹ .	O-Ring Linear LEX-60-0 MS-29513-10		.75
Coml. Sp ¹ .	O-Ring Linear LEX-60-0 MS-29513-6		.70
Coml. Sp ¹ .	U-Cup (Linear) for 4408 Master Cylinder (#1825-43)		.35

<u>PART NO.</u>	<u>DESCRIPTION</u>	<u>STD. BOX QUANTITY</u>	<u>PRICE</u>
AN3-15A	Bolt for B-711 Master Cylinder	5	.10
AN4-7A	Bolt 1/4-28 x 29/32 long for 3200 Tailwheel Assembly (4 per wheel)	12	.09
AN42-6	Eye Bolt for 3243-1 Installation Kit		1.45
AN310-8	Nut-Castle for 3200 Tailwheel Assembly	10	.15
AN316-4R	Nut for 4408 Master Cylinder		.06
AN320-8	Nut - Shear for 3200 Tailwheel Assembly	10	.15
AC356-1032	Palnut for B-711 Master Cylinder	5	.10
AN364-720	Nut, Elastic Stop for 3000 Series and 3-24B Tailwheel Assemblies	10	.15
AN365-428	Nut - Self Locking 1/4-28 for 3200 Tailwheel Assembly	12	.08
AN365-1032	Lock Nut for 2715 Kit	12	.10
AN380-3-3	Cotter Pin for 3200 Tailwheel Assembly	24	.02
AN470-AD4-20	Rivet for 4408 Master Cylinder		.06
AN500-8-8	Screw for B-711 Master Cylinder	100	.03
AN520-10-8	R. H. Screw for 2715 Kit		.02
AN940-13	Washer for 4200 Valve	8	.04
AN960-816	Washer - Plain 7/8 O.D. x .064 for 3200 Tailwheel Assembly	10	.03
AN-6227B-1	O-Ring for 4200 Valve Assembly	5	.50
AN-6227B-5	O-Ring for 4200 Valve Assembly	5	.50
AN-6227-16	O-Ring for 4000 and 4350 Master Cylinders		.50
3-24B	Tailwheel Assembly, 6 x 2 solid rubber tire; 1-1/2" bracket for tailspring (2151 Spring Connector not included)	1	32.50
3-24BS	Tailwheel Assembly, 6 x 2 solid rubber tire; 1-3/4" bracket for tailspring (2632 Spring Connector not included)	1	35.50
B-711	Master Cylinder	1 pr.	30.00 pr.
1076	Name Plate		.15
1140	Rudder Arm	3	2.50
1159	Gasket Vent Screw for B-711 Master Cylinder	10	.06
1220	Bracket R. H. unit for B-711 Master Cylinder	2	5.50
1232	Bracket L. H. unit for B-711 Master Cylinder	2	5.50
1248 H	L. H. Hydraulic Pressure Unit (B-711 Master Cylinder)	1	15.00
1256	Spring for B-711 Master Cylinder	10	.40
1258	Screw - Vent for B-711 Master Cylinder	10	.25
1260 H	R. H. Hydraulic Pressure Unit (B-711 Master Cylinder)	1	15.00
1300	Grease Fitting for 6" wheel assembly	25	.30
1306	Adapter - sleeve to fit tailwheel mounting bolt 7/16" O.D. fits 3/8" bolt	10	.20
1364	Hub Cap for all wheels with double arm fork	2 pr.	1.00 pr.
1381	Axle Assembly with nut, grease fitting, cotter and 1 pr. Garlock grease seals 1/2"	10	1.65

<u>PART NO.</u>	<u>DESCRIPTION</u>	<u>STD. BOX QUANTITY</u>	<u>PRICE</u>
1383	Piston for B-711 Master Cylinder	5	1.50
1421	Ball Bearing for 3000 Series Tailwheel Assembly	15 pr.	1.75 pr.
1478	Bracket Spacer used when fitting tailwheel assembly to 1-1/4" spring leaf (does not include 1306)	2	.55
1709	Arm & Cam Assembly for 3-24B and 3-24BS Tailwheel Assemblies	2	6.30
1712	Pedal Assembly R.H. for B-711 Master Cylinder	5	2.30
1714	Pedal Assembly L.H. for B-711 Master Cylinder	5	2.30
1744	Axle Assembly for 3000 Series Tailwheel Assembly	10	2.90
1751	Diaphragm for B-711 Master Cylinder	10	1.00 1.35
1781	Bushing Cap for 3000 Series and 3-24B Tailwheel Assemblies	10	.40
1800	Bushing for brackets on 3000 Series and 3-24B Tailwheel Assemblies	12	1.30
1801	Axle with grease fitting for 3000 Series Tail- wheel Assembly	10	1.65
1803	Grease seal for 3000 Series Tailwheel Assembly	25 pr.	.15 pr.
1840	Wheel Assembly for 3-24B and 3-24BS Tailwheel Assemblies	4	15.00
1856	Hub Assembly less tire for 3-24B and 3-24BS Tailwheel Assemblies	5	11.00
1862	Spacer, Grease Retainer for all tailwheel assemblies	10	.15
1863	Grease Retainer for all tailwheel assemblies	10	1.10
1864	Bearing Bushing - for adapting 1/2" bearing for use with 7/16" axle	10 pr.	.60 pr.
1865	Wheel Assembly, for 3000 Series, less tire (Includes Ref. #17, 18, 19, 20, 21 and 23)	5	6.50
1867	Shim - Piston Seal for 4000 Series and 4350 Master Cylinder		.06
1869	Wheel Assembly for 1/2" axle with two grease seals	4	14.50
1871	Wheel and tire assembly for 3000 Series with 7/16" bearing for double arm tailwheel fork (Includes Ref. #17 to and including 23)	4	10.50
1872	Wheel Assembly, 6", 1/2" Timken Bearings, less tire	5	10.50
1873	Wheel and Tire Assembly, 1/2" Kilian Bearings		11.50
1874	Wheel Assembly, 1/2" Kilian Bearings, less tire	4	7.50
1875	Bolt set - three fillister head and elastic stop nuts for Scott Cast Wheels	15 sets	.45 set
1879	Tire, General 6 x 2	4	4.25
1882	Hub Cap Assembly for 3-24B Tailwheel Assembly	4	1.15
1883	Timken Roller Bearing - 1/2"	10	3.00
1884	Axle Nut Kit for 3-24B Tailwheel Assembly	10	.25
1967	Hub Kit for 6" Tailwheel Assembly	5	4.50

<u>PART NO.</u>	<u>DESCRIPTION</u>	<u>STD. BOX QUANTITY</u>	<u>PRICE</u>
2003	Pad - Diaphragm for B-711 Master Cylinder	10	1.50
2077	Bracket Assembly (1-1/2" leaf) for 3-24B and 3000 Series Tailwheel Assemblies	2	6.00
2078	Fork, single arm for 3-24B Tailwheel Assembly	1	10.75
2082	Handi-Air		24.50
2085	Shim for 3-24B, 3-24BS and 3000 Series Tailwheel Assemblies	30	.05
2090	Handi-Air Hose		3.75
RN 2100	Oil Temperature Gauge 100 - 250° F.		9.50
2133	Link for 2151 and 3239 Spring Connectors		.10
2151	Spring Connector for all Scott Tailwheel Installations except 3-24BS, 3200 and 3400	5 pr.	2.00 pr.
2241	Rudder Arm, Piper J-4 and Taylorcraft	3	4.00
2346	Washer for 6" tailwheel assemblies	10	.10
2504	Hub Cap Spacer - permits use of cast wheel with 1/2" Timken bearing on double arm fork with 1/2" axle	4	.20
2504-1	Spacer, Grease Retainer for 8" tailwheel assembly	4	.20
RN 2550	Oil Pressure Gauge 0 - 120 p. s. i.	1	3.25
2583	Rudder Arm, Stinson	3	3.50
2598	Hub - Wheel (2 per wheel) for 2600 Wheel & Tire Assembly	2	6.40
2600	Tire and Wheel Assembly for 3200 and 3250 Tailwheel Assemblies	1	31.50
2602	Gasket for 2600 Wheel & Tire Assembly	12	.20
2609	Spring Connector - special for Aeronca post-war models	5 pr.	2.30 pr.
2622	Rudder Arm - special for Aeronca	3	4.00
2632	Spring Connector - Stinson 108 Series using Scott 3-24BS - 6" Tailwheel Assembly	5 pr.	1.50 pr.
2650	Gauge for Handi-Air		3.00
2715-A	Hydraulic Pressure Unit and Parking Brake Installation for PA-11 and PA-19		49.75
2715-AK	Parking Brake Conversion Kit		34.75
2715-1	Clamp for 2715-A and 2715-AK Kits		.60
2716	Air Temperature Gauge	1	9.50
2719	Rudder Arm for Piper Pacer	2	3.25
2728	Cover Assembly - compression for B-711 Master Cylinder	5	5.50
3000-A1	Tailwheel Assembly - steerable, double arm, 6 x 2 solid rubber tire	1	26.50
3000-B2	Tailwheel Assembly - full swivel, double arm, 6 x 2 solid rubber tire	1	26.50
3001	Fork, steerable for 3000-A1 Tailwheel Assembly	1	8.50
3004	Name plate for 3000 Series Tailwheel Assemblies		.05
3006	Fork, full swivel for 3000-B2 Tailwheel Assembly	1	8.50
3102	Bracket (1-3/4" leaf) assembly for 3-24BS Tailwheel Assembly	2	9.00

<u>PART NO.</u>	<u>DESCRIPTION</u>	<u>STD. BOX QUANTITY</u>	<u>PRICE</u>
3200	Tailwheel Assembly - 8" pneumatic tire, full-swivel, steerable, for tail spring mounting on 2 and 4 place aircraft. (3239 Spring Connector not included.)	1	77.50
3205	Bushing for 3200 and 3250 Tailwheel Assemblies	12	1.00
3206	Washer - thrust for 3200 and 3250 Tailwheel Assemblies	8	1.00
3207	Washer - thrust for 3200 and 3250 Tailwheel Assemblies	4	.25
3214	Arm Assembly for 3200 Tailwheel Assembly	1	11.50
3214 T	Arm Assembly for 3250 Tailwheel Assembly	1	13.50
3216	Bracket Assembly for 3200 Tailwheel Assembly (Includes bracket, spindle, 90° lubricator fitting, name plate and attaching screws, assembled)	1	14.50
3219	Pawl for 3200 and 3400 Tailwheel Assemblies	4	2.55
3219-1	Pawl for 3250 Tailwheel Assembly	4	2.55
3222	Spring for 8" Tailwheel Assemblies	4	.80
3223	Tube - 8" x 3.00 with Schrader stem #TR87 for 2600 Wheel and Tire Assembly	4	2.75
3224	Fork Assembly for 3200 and 3250 Tailwheel Assemblies (Includes bushing, bearing, cup, pin and fork assembled)	1	19.75
3225	Washer - Lock for 8" Tailwheel Assembly	10	.40
3226	Pin for 3200 and 3250 Tailwheel Assemblies		.15
3227	Spacer (2 per wheel) for 2600 Wheel and Tire Assembly	6	.20
3228	Tire - 8" x 3.00 x 4 ply for 2600 Wheel and Tire Assembly	4	6.75
3233	Spring - Compression (3 required) for 8" Tailwheel Assembly	12	.17
3234	Thrust plate assembly for 3200 and 3250 Tailwheel Assemblies	4	1.30
3235-1	Lower Dust Cap for 3200 Tailwheel Assembly	4	.75
3235-2	Upper Dust Cap for 3200 Tailwheel Assembly	4	.75
3236	Axle Assembly for 3200 and 3250 Tailwheel Assemblies (Includes straight lubricator fitting and axle)	4	2.40
3236-C-2	Axle Assembly, used on 3400 Tailwheel Assembly		1.75
3239	Spring Connector Kit for Scott 3200 Tailwheel Assembly	2 pr.	2.50 pr.
3241-1S	Installation Kit for 3200 Tailwheel Assembly for Cessna, Aeronca 15 & Luscombe	1	3.50
3241-2	Bushing for 3241-1S and 3243-1 Installation Kits		.25
3241-3S	Spacer for 3241-1S Installation Kit		.55
3243-1	Installation Kit for 3200 Tailwheel Assembly for Piper		4.50
3243-2	Spacer for 3243-1 Installation Kit		1.60

<u>PART NO.</u>	<u>DESCRIPTION</u>	<u>STD. BOX QUANTITY</u>	<u>PRICE</u>
3244	Hub Assembly, minus tire and tube, for 2600 Wheel and Tire Assembly	2	23.85
3250	Tailwheel Assembly, 8" pneumatic tire, full swivel, steerable, has "A" frame mounting for installation on Globe or Temco Swift. (3239 Spring Connector not included).	1	93.50
3250-1	Drag Link for 3250 Tailwheel Assembly		28.50
3256-1	Lower Dust Cap for 3250 Tailwheel Assembly		.75
3256-2	Upper Dust Cap for 3250 Tailwheel Assembly		.75
3257	Pin - used for installation of 3222 Spring		.30
3258	Spacer, .015 thick - for 8" Tailwheel Assembly		.10
3258-1	Spacer, .026 thick - for 8" Tailwheel Assembly		.10
3407	Spacer, used on 3400 Tailwheel Assembly		.20
3408	Washer, Steel, used on 3400 Tailwheel Assembly		.60
3408-1	Washer, Plastic, used on 3400 Tailwheel Assembly		.15
3408-2	Washer, Plastic, used on 3400 Tailwheel Assembly		.20
3410	Arm Assembly, used on 3400 Tailwheel Assembly		14.80
3411-1	Dust Cap, Lower, used on 3400 Tailwheel Assembly		.80
3411-2	Dust Cap, Upper, used on 3400 Tailwheel Assembly		.80
3412	Bracket Assembly, used on 3400 Tailwheel Assembly		19.25
3413	Fork Assembly, used on 3400 Tailwheel Assembly		19.00
4000	Master Cylinder	1	16.50
RN 4000	Ammeter - Range 30 - 0 - 30	1	3.75
4001	Cylinder and Cap Assembly for 4000 Master Cylinder	1	9.50
4005	Piston Assembly for 4000 Master Cylinder	1	3.25
4008	Rod - Piston Clevis for 4000 and 4350 Master Cylinders		.95
4008-1	Rod - Piston Clevis for 4408C Master Cylinder		.95
4008-2	Rod - Piston Clevis for 4408B Master Cylinder		.95
4009	Stop - Piston for 4000 and 4350 Master Cylinders		.30
4010	Spring - Piston Return for 4000 Master Cylinders		.30
4011	Cover - Reservoir for 4000 Master Cylinder		1.15
4012	Washer - Retaining for 4000 and 4350 Master Cylinder		.30
4013	Seal - Reservoir for 4000 Master Cylinder		.20
4014	Seal - Piston Stem for 4000 and 4408 Master Cylinder		.20
4015	Gasket - filler screw - for 4000 Master Cylinder		.10
4016	Ring - snap for 4000 and 4350 Master Cylinders		.15
4151	Parking brake lock control for 2715 Kit		.35

<u>PART NO.</u>	<u>DESCRIPTION</u>	<u>STD. BOX</u> <u>QUANTITY</u>	<u>PRICE</u>
4154	Plate - Parking instructions for 2715 Kit		.45
4200	Valve Assembly - 1/8 NPT - no arm		8.50
4200 A1	Valve Assembly, 1/8 NPT - with arm Position 1	1	9.75
4200 A2	Valve Assembly, 1/8 NPT - with arm Position 2		9.75
4200 C	Valve Assembly, 3/8 NF, no arm		8.50
4200 C-A1	Valve Assembly, 3/8 NF, with arm Position 1		9.75
4200 D	Valve Assembly, 1/8 NPT - no arm] Made expressly for and available only from Beech Aircraft.	
4200 D2	Valve Assembly, 1/8 NPT - no arm		
4200 D-A1	Valve Assembly, 1/8 NPT - arm Position 1		
4200 D2-A1	Valve Assembly, 1/8 NPT - arm Position 1		
4200 S	Valve Assembly, 7/16 NF, no arm		8.50
4200 S-A1	Valve Assembly, 7/16 NF, with arm		9.75
4200 S-A2	Valve Assembly, 7/16 NF, with arm		9.75
4201	Body for 4200 Valve Assemblies except 4200 D	2	4.85
4203	Stem Assembly for 4200 and 4225 Valve Assemblies except 4200 D	2	1.85
4206	Valve Seat for 4200 and 4225 Valve Assemblies except 4200 D	2	.85
4207	Valve Seat Gasket for 4200 and 4225 Valve Assemblies	2	.10
4208	Arm Assembly for 4200 Valve Assembly except 4200 C-A1	2	.95
4208-1	Arm Assembly for 4200 C-A1 Valve Assembly		.60
4212	Body for 4200 C Valve Assembly		4.85
4212S	Body for 4200 S Valve Assembly		4.85
4213	Seat-Valve for 4200 C. Valve Assembly		.85
4213 S	Seat - Valve for 4200 S Valve Assembly		.85
4214	Stem Assembly for 4200 D Valve Assembly] Made expressly for and available only from Beech Aircraft.	
4215	Seat - Valve for 4200 D Valve Assembly		
4216	Spring for 4200 D Valve Assembly		
4225	Fuel & Hydraulic Valve		9.25
4225 A1	Fuel & Hydraulic Valve		10.50
4225 A2	Fuel & Hydraulic Valve		10.50
4225 B	Fuel & Hydraulic Valve		9.65
4225 B1	Fuel & Hydraulic Valve		10.65
4225 B2	Fuel & Hydraulic Valve		10.65
4226	Body used on 4225 Series Valves		5.27
4305	Piston Assembly for 4350 Master Cylinder	1	4.75
4310	Spring - Piston Return for 4350 Master Cylinder		.30
4350	Master Cylinder	1	16.50
4351	Cylinder and Cap Assembly for 4350 Master Cylinder	1	7.75
4361	Reservoir Cover for 4350 Master Cylinder	1	1.10

<u>PART NO.</u>	<u>DESCRIPTION</u>	<u>STD. BOX QUANTITY</u>	<u>PRICE</u>
4408	Master Cylinder - Standard - 5/8 - 18 male thread - has top mounting lug		21.75
4408 B-1	R. H. Master Cylinder - Cessna - 7/16 - 20 female thread - has Piston Clevis Rod		21.75
4408 B-2	L. H. Master Cylinder - Cessna - 7/16 - 20 female thread - has Piston Clevis Rod		21.75
4408 C	Master Cylinder - Aeronca - 7/16 - 20 male thread - has Piston Clevis Rod		21.75
4408 D	Master Cylinder - Luscombe - 1/8 NPT female thread - has top mounting lug		21.75
4454	Cap - Reservoir for 4408 Series Master Cylinder		3.85
4468	Washer for 4408 Series Master Cylinder		.06
4472	Cylinder Assembly for 4408 Master Cylinder		5.25
4472 B	Cylinder Assembly for 4408 B1 and B2 Master Cylinder		5.25
4472 C	Cylinder Assembly for 4408 C Master Cylinder		5.25
4472 D	Cylinder Assembly for 4408 D Master Cylinder		5.25
4473 AL	Reservoir - metal for 4408 Series Master Cylinder	4	3.85
4476	Piston Assembly for 4408 Series Master Cylinder		1.35
4477	Stem for 4408 Series Master Cylinder		2.75
4479	Lug - Top mounting for 4408 and 4408 D Master Cylinders		.55
4480	Spring for 4408 Series Master Cylinder		.25
4481	Nut for 4408 Series Master Cylinder		.55
4482	Spring Parking Lock for 4408 Series Master Cylinder		.20
4483	Stop Piston for 4408 Series Master Cylinder		.30
4484	Lock - Parking for 4408 Series Master Cylinder		1.15
4485	Spring Washer for 4408 Series Master Cylinder		.10
	Aircraft Windshield Cleaner (Includes Squirt Top with each pint can)	1 case (12 pints) 1 case (6 gals.)	13.75 case 1.25 pint 27.50 case 4.95 gal.

