

# Release Notes – Version 5.6.35

---

StrataMax has been dedicated to meeting the needs of Strata Managers for over 20 years through the continual enhancement of our software suite. We are committed to providing new functionality to support you in servicing your clients and to provide opportunities for you to optimize efficiency within your office environment.

This document describes exciting new features and enhancements available in the above release.

A history of Release Notes can be reviewed on the [StrataMax Online Help](#)



THE COMPLETE STRATA MANAGEMENT SOLUTION



**What's New..... 3**

1. StrataMax Desktop – ResVu.....3

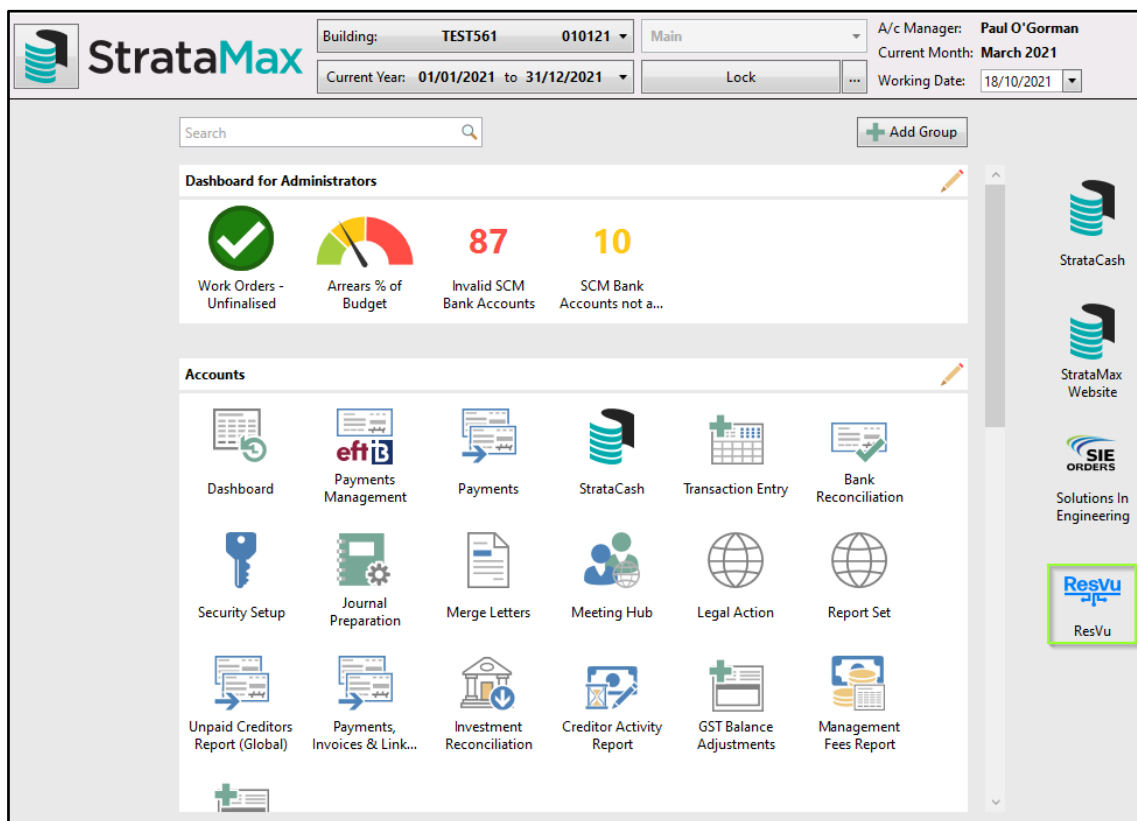
2. Add Office Bearer – Copy from Roll.....3

**What's Better..... 5**

# What's New

## 1. StrataMax Desktop – ResVu

We've added link to our new integration partner ResVu, who provide owners and tenants with the opportunity to action all of their day-to-day needs directly from a custom-branded mobile app. Please see the [ResVu](#) site for more details.



## 2. Add Office Bearer – Copy from Roll

'Select from Roll' option has been changed to 'Copy from Roll' which allows the contact to be modified and saved as a separate contact to the Roll. When selecting 'Copy from Roll' in the Add Officer screen, the contact details can be modified and no changes will be made to the Roll contact. To see this change please use the steps below:

1. Navigate to 'Office Bearers'
2. Click 'Add Officer'
3. Click 'Copy from Roll'



4. Click 'Save' to add the Office Bearer as it appears in the Roll
5. Modify the contact if required and then save to create a new Office Bearer contact. The roll contact will remain unchanged.

**Please Note:** Once saved as an Office Bearer contact, only minor edits can be made and large changes will be prevented.

# What's Better

- Minor issues have been addressed where configuration drop down selection lists were missing/blank