

Release Notes – Version 5.6.39

StrataMax has been dedicated to meeting the needs of Strata Managers for over 20 years through the continual enhancement of our software suite. We are committed to providing new functionality to support you in servicing your clients and to provide opportunities for you to optimize efficiency within your office environment.

This document describes exciting new features and enhancements available in the above release.

A history of Release Notes can be reviewed on the [StrataMax Online Help](#)



THE COMPLETE STRATA MANAGEMENT SOLUTION



What's New.....3

1. Contact Card – Security Permissions.....3

2. Communications – Multiple Windows.....4

What's Better6

What's New

1. Contact Card – Security Permissions

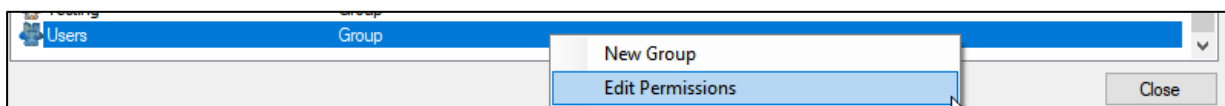
Contact Card security permissions have been added in Security Setup for editing contact details. This will make it possible to control who can edit various areas of a contact card. The new permission settings are

- Edit Contact Names – this restricts name fields.
- Edit contact addresses, phone numbers and email address – this restricts addresses, phone numbers and email address
- Edit contact delivery preferences – this restricts editing of Email/Mail preferences.

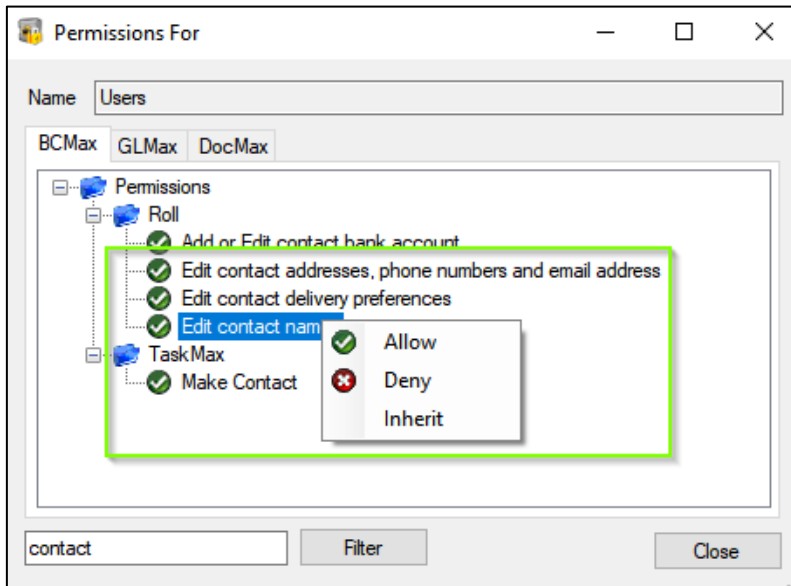
The permissions will affect anywhere that utilises Contact Cards – currently used for Office Bearers, Agents and Mortgagees but in future releases will apply to other areas.

To review and set the new permissions please see the steps below:

1. Open Security Setup
2. Right click the user or group to be modified
3. Select Edit Permissions.



4. Type 'Contact' into the search bar
5. Click Filter.
6. Right click the appropriate control
7. Set Allow, Deny or Inherit
8. Click close



These controls will be set as per the current default for the Edit Roll permissions. E.g. If the 'Edit' Roll permissions is set to 'Allow', the new permissions will be set to 'Allow' on update. We recommend these settings are reviewed by the Administrator.

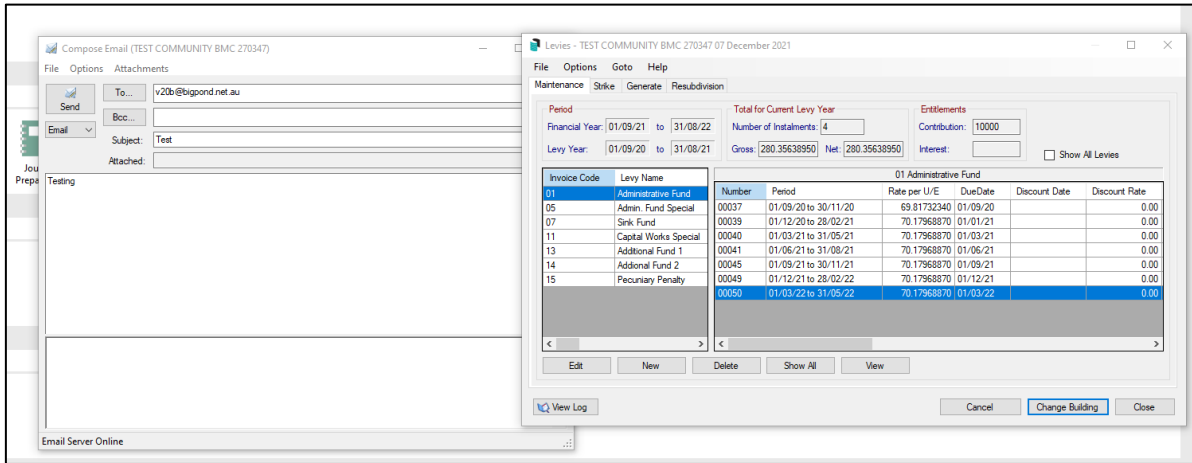
Please Note: Contact Card Delivery Preferences are currently not enabled for Office Bearer contacts.

2. Communications – Multiple Windows

The Communications module will now allow users to utilise other modules and menu options when in the Compose Email screen.

Areas of StrataMax that can be accessed while composing an email are:

- Desktop Options
- Main StrataMax desktop e.g. StrataCash, StrataMax, RESVU
- Search menus
- StrataMax Search Icon
- Building/Company selection lists



What's Better

- Minor Issues have now been addressed when printing a Receipt Report in old year.
- Issues have been resolved where year-end rollover was affecting the voting register.
- Office Bearer setup - Office Bearer setup was sometimes showing invalid Invoice Hub approvers on 2nd approval level if changed in configuration after uploading an Invoice. This has been resolved.
- New tab stop added in DocMax profile for the Inactive Creditors option.
- TaskMax Reports - Reports were crashing if an Invoice number longer than 11 characters was imported into TaskMax. The crash has been resolved and Invoice length allowance in TaskMax has been increased to 25 characters to be consistent with DocMax and Creditor Invoices.
- Minor Issues have been resolved when saving or emailing stored reports and merge letters from the preview screen.
- EFT Manager will no longer crash were 012 balance is zero and there a no 012 transactions in the current year.
- Minor issues have been addressed for the 'No GST' flag when entering Creditor Invoices that are saved in DocMax without an expense code.
- Payment Entry was crashing when split banking was disabled and global setting 'Test Split Bank Balances for Payments' is enabled. This has now been corrected