

## 1 Cluster Configuration Updates for OnGuard 7.5 and Later

An outdated command needs to be updated in the high availability guides to be inclusive of all supported versions of OnGuard.

Applies to the following chapter in the documents:

- MS Clustering guide - Chapter 7: OnGuard Installation and Configuration for Clustering Services > Manually Issue an SSL Certificate.
- NEC ExpressCluster with SQL Server guide – Chapter 6: Install OnGuard on the NEC Server > Install the OnGuard Software > Manually Issue an SSL Certificate.
- NEC ExpressCluster with Oracle guide – Chapter 8: Install OnGuard on the NEC Server > Install the OnGuard Software > Manually Issue an SSL Certificate.

### 1.1 Manually Issue an SSL Certificate

Change `<virtual computer name>` to the **CNAME** of the cluster:

1. On the active node, open a command (CMD) prompt with run as administrator and navigate to **C:\program files(x86)\OnGuard\Certificates\**.
2. In the command prompt, execute the following command:

Change `<virtual computer name>`:

#### For OnGuard 8.0 and later:

```
lnl_app_server_certificate_installer.exe -  
key=C:\ProgramData\Ln1\nginx\conf\ls_server_cert_key.pem -  
cert=C:\ProgramData\Ln1\nginx\conf\ls_server_cert.pem -  
keystore="C:\Program Files (x86)\OnGuard\LicenseServerConfig" -  
cn=<virtual computer name>
```

#### For OnGuard 7.5 or 7.6:

```
lnl_app_server_certificate_installer.exe -  
key=C:\ProgramData\Ln1\nginx\conf\ls_server_cert_key.pem -  
cert=C:\ProgramData\Ln1\nginx\conf\ls_server_cert.pem -  
cn=<virtual computer name>
```

3. Failover and repeat steps 1-2 on the other node.

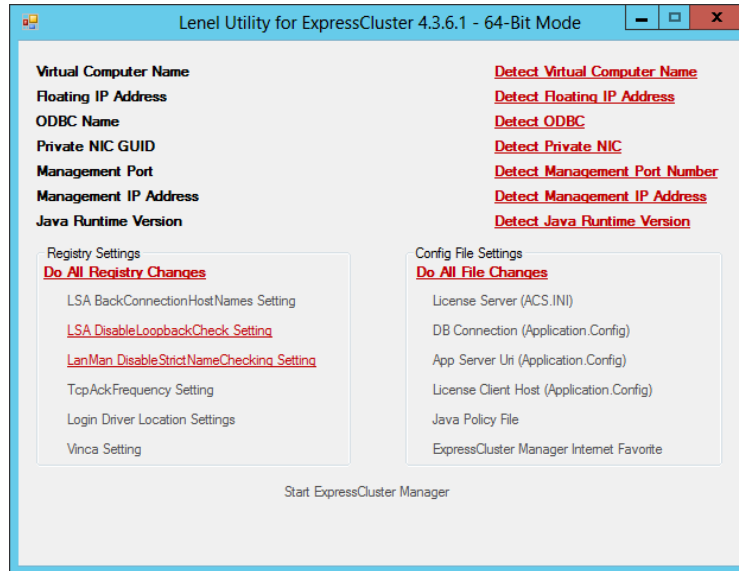
### 1.2 Run the Lenel Utility for ExpressCluster

After the SSL certificate is issued, run the Lenel Utility for ExpressCluster. At this point, OnGuard and the SQL Server database are installed.

1. To run the utility:

- a. Insert the Supplemental Materials media into the disc drive and navigate to the **High Availability\NEC\ExpressCluster Tools** folder.
- b. Save the file **Lenel Utility for ExpressCluster.exe** to the Desktop, and then run it as administrator.

The Lenel Utility for ExpressCluster window is opened.



2. Perform all the following:

- Detect Virtual Computer Name: Writes the `<Virtual Computer Name>`.
- Detect Floating IP Address: Writes the `<Floating IP Address>`.
- Detect ODBC: Select the OnGuard database (e.g. ACCESSCONTROL).
- Detect Private NIC: Provides the two Ethernet ports. Select the IP address that is part of mirror/private interconnect.
- Detect Management Port Number.
- Detect Management IP Address.
- Detect Java Runtime Version: Select the Java version you want to use for the Cluster Manager.

3. Perform **Do All Registry Changes**. A message should report that all modifications were completed successfully.

4. Perform **Do All File Changes**. Click [Yes] to confirm. A message should report that all changes were completed successfully, or no changes were required.

---

*Note:* The utility writes the Vinca key to the **HKEY\_LOCAL\_MACHINE\SOFTWARE\WOW6432Node\** location. However, the Vinca key needs to be copied to **HKEY\_LOCAL\_MACHINE\SOFTWARE\** so the 32-bit side of OnGuard can locate it.

---

5. Using **regedit.exe**, navigate to:  
**Vinca\CoStandby\Clusteritems\CLU\_IPADDRS\<Floating IP Address>**.  
Right-click on the IP address, and then select **Export**.
6. Save the Vinca registry file to the Desktop. This is the original Vinca key.
7. Open the file in Notepad and edit it by removing **WOW6432Node** from the path to:  
**HKEY\_LOCAL\_MACHINE\SOFTWARE\**.
8. Save the new file to the Desktop. For example, save it as **Vinca 64 bit.reg**.
9. Right-click on the new file, and then select **Merge**.
  - a. Click [Yes] to confirm User Account Control.
  - b. Click [Yes] on the Registry Editor message to continue. A message should follow reporting the merge was successful.
10. Verify the new Vinca key location at **HKEY\_LOCAL\_MACHINE\SOFTWARE\**.
11. Failover to the other side of the cluster and repeat these steps.

## 2 Cluster Configuration Updates for OnGuard 7.6 and Later

After issuing the SSL certificate and running the Lenel Utility for ExpressCluster, the RabbitMQ password needs to be synchronized on both sides of the cluster. The utility can be run before or after synchronizing the password.

### 2.1 Synchronize RabbitMQ Password

1. On the active node, run **cmd.exe** as administrator.
2. Navigate to the RabbitMQ Server directory (default location: **C:\Program Files\RabbitMQ Server\rabbitmq\_server-3.7.17\sbin**).
3. Run the following command:  
`rabbitmqctl change_password LenelRabbit <new_password>`
4. In System Administration: From the **Administration** menu, select **System Options**.
  - a. On the RabbitMQ tab, click [Modify].
  - b. Enter the new password.
  - c. Click [Test Connection] to confirm the new password works.
  - d. Click [OK], and then close the tab.
  - e. Close System Administration.
5. Failover to other side. Repeat steps 1-3.
6. In System Administration: From the **Administration** menu, select **System Options**.
  - a. On the RabbitMQ tab, click [Modify].
  - b. Click [Test Connection] to confirm the new password works.
  - c. Click [OK], and then close the tab.
  - d. Close System Administration.

### 3 OnGuard Custom Install Issue for DataConduIT

A note needs to be added to the high availability guides to be inclusive of all supported versions of OnGuard.

---

*Note:* When performing a **Custom Install** of a client, and selecting the “DataConduIT” option, the installation may be successful but the DataConduIT service will not start, giving a WMI error. This occurs because the DataConduIT service is dependent on the same WMI Wrapper that is used by Open Access. (Not selecting the “Open Access” option causes the WMI error.) **To resolve:** Select both options “Open Access” and “DataConduIT” when performing a Custom Install of DataConduIT.

---