

Release Notes – Version 5.6.45

StrataMax has been dedicated to meeting the needs of Strata Managers for over 20 years through the continual enhancement of our software suite. We are committed to providing new functionality to support you in servicing your clients and to provide opportunities for you to optimize efficiency within your office environment.

This document describes exciting new features and enhancements available in the above release.

A history of Release Notes can be reviewed on the [StrataMax Online Help](#)



THE COMPLETE STRATA MANAGEMENT SOLUTION



What's New.....3

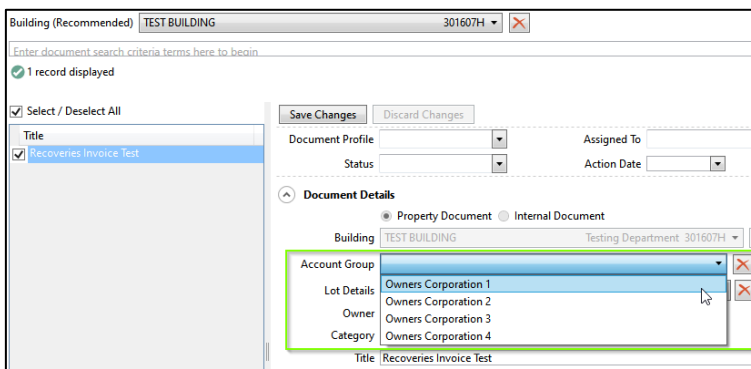
- 1. DocMax – Account Group Field (Victoria Multi OC).....3
- 2. Levy and Arrears Notices – BCC Account Manager4
- 3. Month End Rollover – Skip GLMax Bas Check5
- 4. Part 1 – Stored Reports storing in DocMax.....6

What's Better.....7

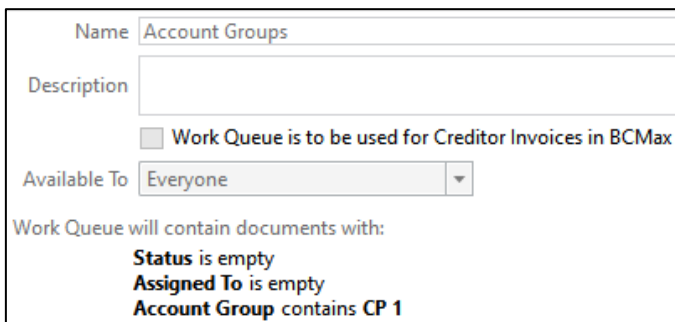
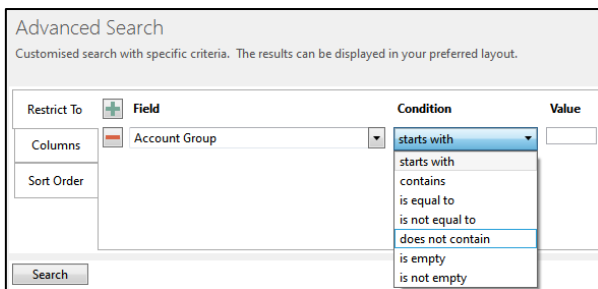
What's New

1. DocMax – Account Group Field (Victoria Multi OC)

A new DocMax property has been added to accommodate documents filed into DocMax for an account group building where the document is specific to a particular Account Group. When adding a new document, if an account group building is selected, the Account Group field will become available where the relevant group can be set. This is an optional field.



The field can also be added to Advanced and Saved searches or included in Work Queue searches.

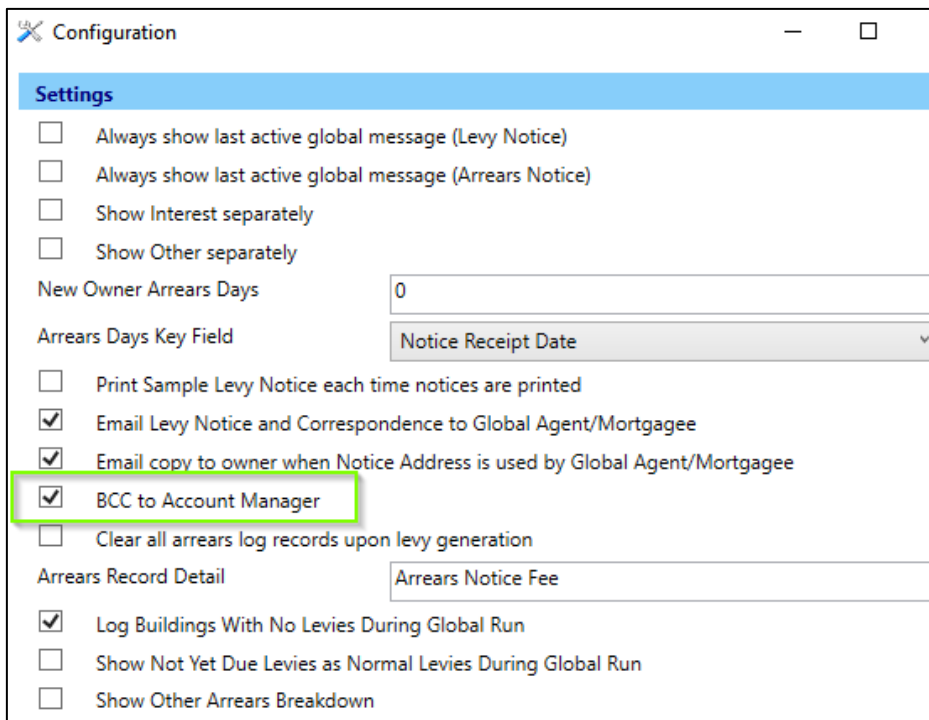


2. Levy and Arrears Notices – BCC Account Manager

Levy and Arrears Notices can now be Bcc'd to the building Account Manager. Ticking this option will email a copy of any Levy or Arrears notices that are emailed to owners or agents to the Account manager set in Info Update.

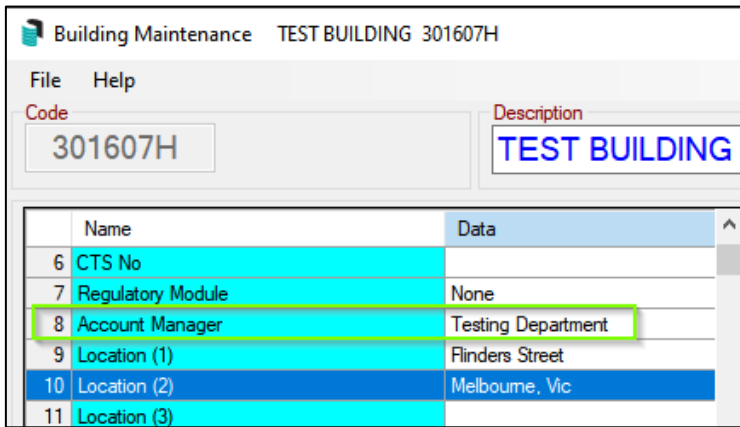
To set this option, please see the steps below:

1. Navigate to Levy Notices and Reports
2. File
3. Configure
4. Tick “BCC to Account Manager” option
5. Close

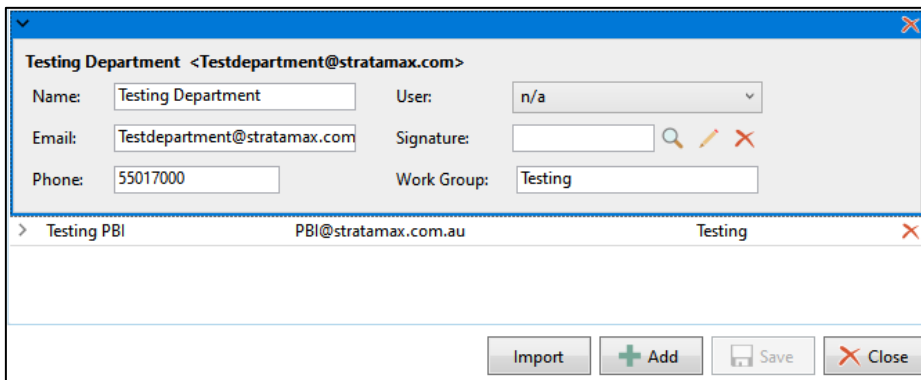


Please Note: This is a building level setting only and needs to be applied in each building where required. Changing this setting will affect all users.

To review the Account Manager for the building, navigate to Info Update / Account Manager.



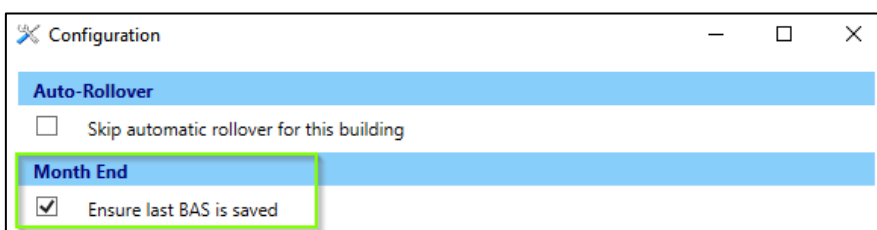
To update the email address or edit, use Account Manager Edit. Click import in import your computer username and email address account.



3. Month End Rollover – Skip GLMax Bas Check

GLMax can now skip the check if the latest BAS has been saved for GLMax companies where the BAS is not required. To see this option, navigate to GLMax / Month End Rollover / Options.

Tick or untick 'Ensure Last BAS is saved' and close the configuration screen. This setting applies if the Rollover is run manually or automatically.



4. Part 1 – Stored Reports storing in DocMax

Enhancements have been made to store all stored reports into DocMax which will allow users to view these documents in workflows and upload these documents to portal where applicable. This change will also aim to reduce the BCMax database size for backups.

Existing stored reports will not initially be moved to DocMax on upgrade, this will occur separately via the scheduler over time. All Stored Reports will still be viewable in stored reports along with any new document/report being automatically available in DocMax. Types of reports that will now be stored in DocMax are but not limited to:

- Levy Notices
- Arrears Notices
- Invoices
- Financial Reports stored on Rollover
- Status Reports
- Funds Management Reports
- . Let Merge letters

Please Note: The following document types will **not** be stored in DocMax under Part 1 of this enhancement:

- Sub Group reports
- Sub Group Invoices
- “.Doc” (MS Word) Merge Letters
- GLMax reports/documents

Important Note: If you wish to transfer a building coming from a version greater than 5.6.45, you will need to be running the same version or greater.

What's Better

- Levy Notices - Templates designed to output an Invoice Number (e.g. LNOTE_84A) will use the Due Date to form the first part of the Invoice Number instead of the Determination date to reduce risk of duplicated Invoice Numbers.
- Change code number will no longer be available for selection in old year. Change code number processed in the current year includes prior years.
- Insurance Expiry Test Configuration - Insurance codes will now be displayed.