

Configuring Geutebrück GeViScope

Version 5.0.790.74

Configuring Third-Party Programs

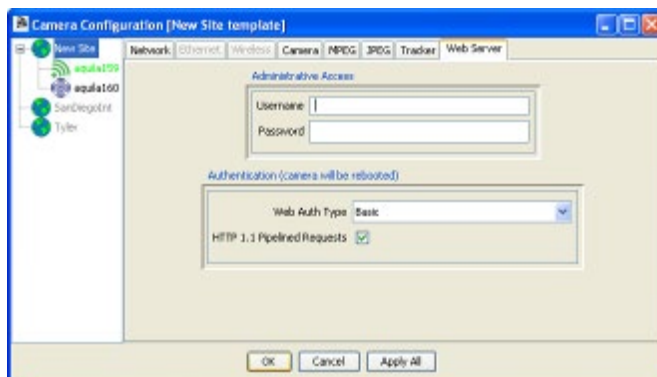
SightLogix devices are used with two types of third-party programs: VMS programs, which display video, GPS coordinates, and alarm and other information from SightLogix devices, and command and control systems (C2), which are integrated systems for monitoring multiple types of sensors. Currently, SightLogix supports a range of VMS programs and control systems. Additional programs and systems will be supported in the future.

In order for a VMS program to display the video and alarms received from SightLogix devices, the program must be configured properly, both to open communication with devices and to respond appropriately to alarm information. The actual configuration steps differ, depending on the program. However, most programs require the following:

- > **Setting web authentication between the SightLogix device and the VMS.** This includes entering the username and password (the default username is *sightlogix* or *root*, and the default password is *push2edg*). It is recommended that you change both defaults.

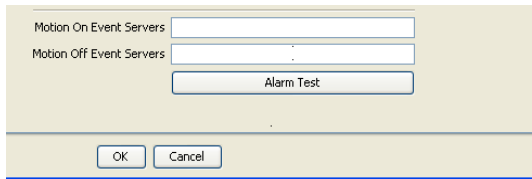
It also includes changing to digest web authentication if this more secure web authentication is supported by the individual VMS program. (By default, SightSensors are set up for basic authentication, which is supported by all VMS programs.)

You set both the web username/password and the authentication type from the Web Server dialog (right-click a device icon in the SightMonitor camera tree → Configure → Web Server):



- > **Adding SightSensors as AXIS-211 devices** (except when indicated); adding SightTrackers as AXIS 213.
- > **Under MPEG tab**, check the box for “Disable RTCP timeout”.

- > **Specifying the actions (or events) that occur when an alarm is received.** This can include, depending on the program: audio alerts, automatic recording during an alarm, bookmarks inserted into recorded video to signal the start or end of an alarm, etc.
- > **Testing that alarm information is relayed from a SightLogix device to the VMS program.** The Alarm Test option on the Camera (right-click device icon → Configure) simulates an alarm.

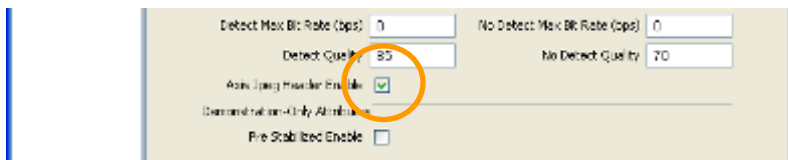


The following sections provide general guidance on how to configure the VMS programs that have been tested with SightLogix devices. However, for detailed, specific information, see the documentation that came with the particular VMS program.

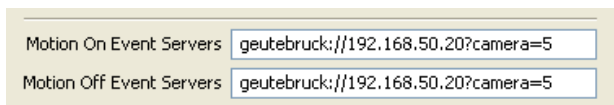
Geutebrück GeViScope version 5.0.790.74

All procedures in the following sections assume you are logged into the server. Geutebrück supports one channel per device (motion JPEG only).

Before adding a SightLogix device, enable Axis Jpeg header as follows: Open the device's JPEG tab (right-click device icon → Configure → JPEG); select the checkbox for Axis Jpeg Headers. Click OK.

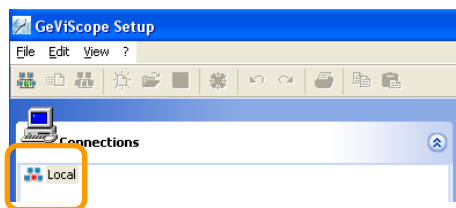


The next step is to add the Geutebrück URL to the Camera dialog in the Coordination System using the following syntax for both Motion On and Motion Off Event Servers: `geutebruck://server-IP-address?camera=n`. This syntax, which incorporates the IP address of the Geutebrück server, contains the string `?camera=n`, where `n` is the Media Channel Global number (which can be obtained by opening Media Channels from under the General Settings):

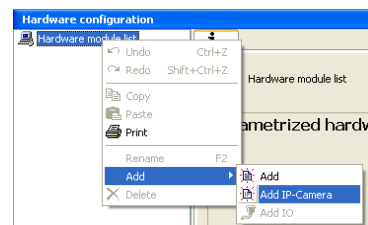


Adding SightLogix devices

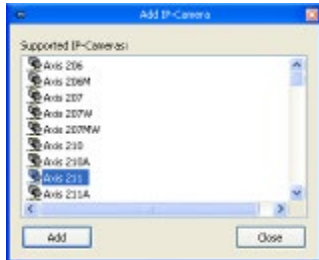
1. Open GeViScope Setup and then click the Local icon.



2. Right-click the Hardware icon from the list at left.

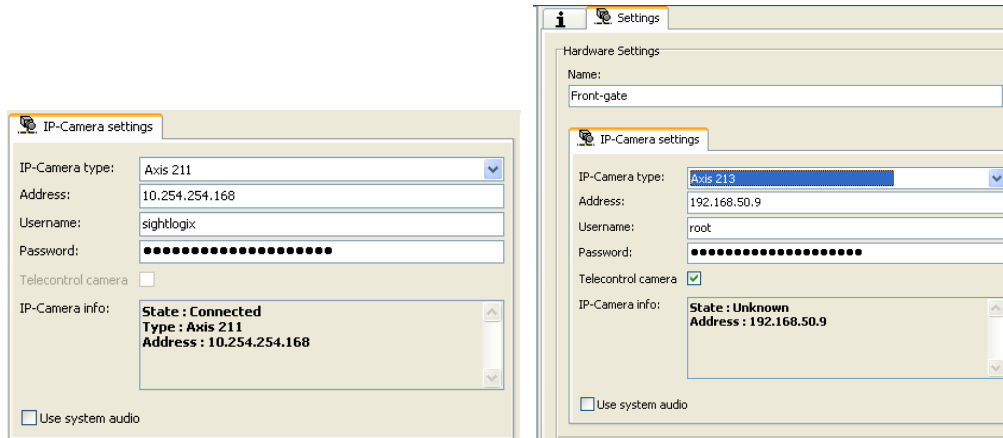


3. In the middle column, right-click **Hardware module list** → **Add** → **Add IP Camera**.
4. From the list, select Axis 211 if you're installing a SightSensor or select Axis 213 for a SightTracker.
5. Click Add. Click Close.



6. In the center column, select the icon for the device you added and, in the dialog that appears, enter a descriptive name for the device, its IP address, and the username and password (*sightlogix*, and *push2edg*, respectively).

If you installed a SightTracker, select the checkbox for Telecontrol camera.

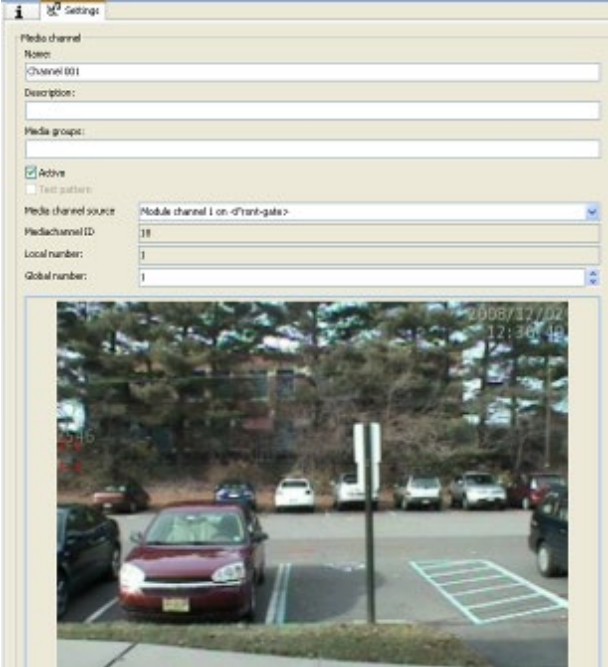


7. Right-click the Local icon in the left column; select **Send setup to server** to see video.

Set up a channel

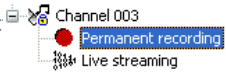
Geutebrück supports the motion JPEG channel for each device. To set up a channel:

1. Click Media Channels in the left column.
2. In middle column, right-click Media Channel List and select Add. If you've added multiple devices, select the appropriate device.
3. In the Medial Channel list, click the icon that was added for the channel, then in the dialog, enter the channel settings that apply to your site.



4. Set any video profile or continuous recording settings required by your site. These settings are available by clicking the two icons below the channel icon.

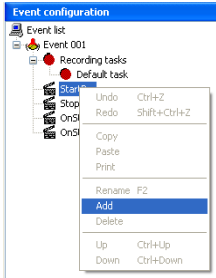
5. Once you've entered all information, right-click Local icon and select **Send set**

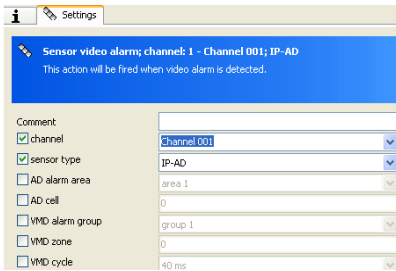


You should now be able to see video from GSCView.

Add an alarm event

1. In the column at left (General Setting), select Event/Alarm settings.
2. In the middle column (Events list), right-click Event list and choose Add.
3. Right-click the Startby icon and click Add. From the list select, Sensor video alarm. Click Add.
4. Click the Sensor video alarm icon and in the dialog that appears, select the channel checkbox and select the channel you just created.
5. Click the sensor type and select IP-AD.

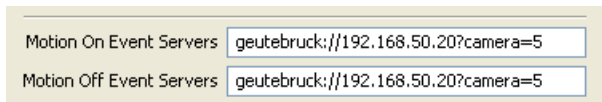




6. Right-click the Local icon and select **Send setup to Server**.
7. Repeat the procedure for the Stopby icon.

Test the connection to the SightMonitor

In the SightMonitor, open the Camera dialog for the device and under Motion On Event Servers, test both the motion on and motion off events by clicking Alarm Test.



Copyright © 2011 SightLogix. All rights reserved.

www.sightlogix.com

SightLogix, SightSensors, and SightTrackers are trademarks of SightLogix, Inc.

DiBos and AutoDome are registered trademarks of Bosch Security Systems, inc.

DVTel is a registered trademark of DVTel, Inc.

Genetec is a registered trademark and Omnicast is a trademark of Genetec Inc.

GOOGLE is a trademark of Google Inc.

Lenel and OnGuard are registered trademarks of Lenel Systems International, Inc.

NetDVMS is a registered trademark of On-Net Surveillance Systems, Inc.

NICE is a trademark of NICE Systems Ltd.

Pelco is a trademark of Pelco.

Proximex Surveillint™ is a trademark of Proximex Corporation.

Symmetry is a registered trademark of Group 4 Technology Ltd.

Verint is a registered trademark of Verint Systems Inc.

XProtect is a registered trademark of Milestone Systems A/S.

All other trademarks are the property of their respective owners.

SightLogix is a licensee of the GNU General Public License (GPL). You can request a copy of the GPL-licensed source code used in this product from a SightLogix sales office.

No part of this document may be reproduced or transmitted in any form or by any means, electronic or mechanical, for any purpose, without the express written permission of SightLogix.

The information in this document is distributed on an "As is" basis and without warranty. While every precaution has been taken in the preparation of this document, SightLogix assumes no responsibility for errors or omissions or for any damages resulting from the use of the information contained herein.