

# Release Notes – Version 5.6.58

---

StrataMax has been dedicated to meeting the needs of Strata Managers for over 30 years through the continual enhancement of our software suite. We are committed to providing new functionality to support you in servicing your clients and to provide opportunities for you to optimize efficiency within your office environment.

This document describes exciting new features and enhancements available in the above release.

A history of Release Notes can be reviewed on the [StrataMax Online Help](#)



THE COMPLETE STRATA MANAGEMENT SOLUTION



**What's New.....3**

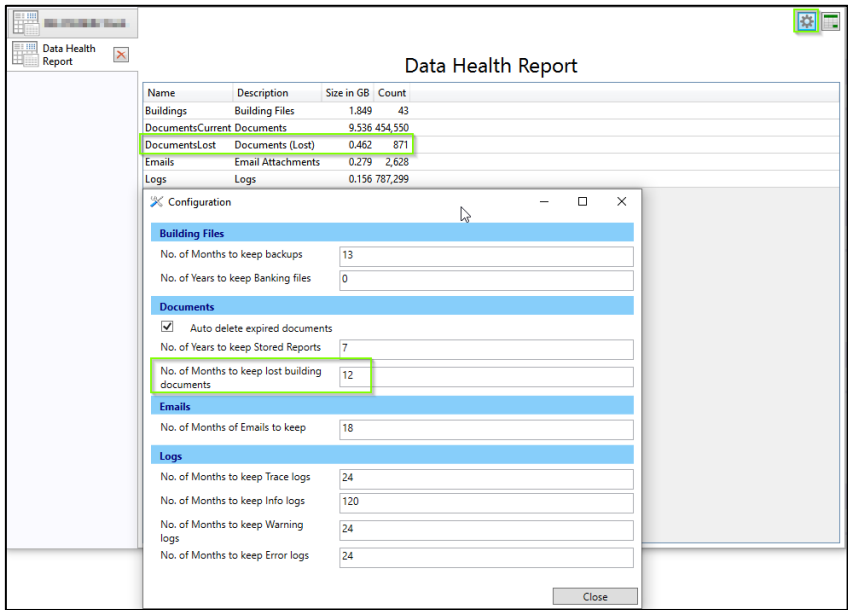
1. Data Health Dashboard - Lost Building Documents.....3

**What's Better.....4**

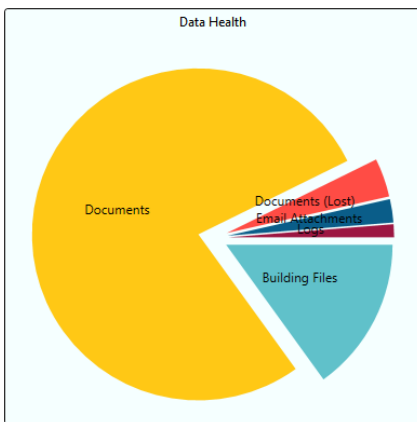
# What's New

## 1. Data Health Dashboard – Lost Building Documents

Further breakdown of documents by Lost/not-lost building status has been provided as an option in the Data Health configuration screen. This option will default to disabled on update but once set, will purge documents for lost buildings automatically after the set time frame.



The breakdown will also be shown in the chart display.



For further information regarding setting up a Dashboard item please review the following Help file: [Dashboard](#)

## What's Better

- When opening Communications where the senders name has not been added to the system, the users will no longer receive an error.
- Enhancements have been made to identify unrepresented items from the sub-groups with variances to show correctly in Process Bank Statements.
- Issue resolved where a contact is used by the Key Register and is part of the contact merge the system.
- When editing a plan number, the plan number was not updating the roll accounts list and the certificate plan number was not been retrieved correctly.
- When printing a Report Set for Bank Rec Report - Old Year, the report will now report the correct report for Old Year.
- When drawing a payment to a creditor that has had a part payment reversed prior, an error was shown. This has now been corrected.
- Contact Management – On upgrade the system may match with an historic or non-current roll record when creating contacts. This has now been resolved.
- In rare instances, Change of Ownership history records after a change of ownership were being added to the one (1) lot. This has been corrected.
- Bank Reconciliation – If a deposit is partially allocated the system will no auto-create or allocate any remaining balance