



BREAKOUT SESSION:

The evolution of military and community compatibility in two state-level case studies

About:

This session explores background and insights on state-agency efforts promoting civilian-military coordination. Learn how Maryland and Washington have used OLDCC grant funding to develop resources that strengthen coordination between the state, military, and communities. Each state provides local communities with technical assistance and guidance based on nationwide best practices for compatible land use, including renewable energy and legislative initiatives.

Speakers:

- Lisa Swoboda, Senior Director, Office of Military and Federal Affairs – MD Department of Commerce; ADC Board of Directors
- Sarah Diehl, Compatible Use Community Planning Liaison – MD Department of Planning
- Genevieve Dial, Program Manager, Defense Community Compatibility Account (DCCA) – WA State Department of Commerce
- Deanah Watson, Program Manager, Compatible Energy Siting Assessment (CESA) – WA State Department of Commerce

Maryland and Washington welcome you.



Military and Community Compatibility Case study: Washington

The importance of coordination for
resilience.

Deanah Watson, program manager, Compatible Energy Siting Assessment

Genevieve Dial, program manager, Defense Community Compatibility Account

ASSOCIATION OF DEFENSE COMMUNITIES INSTALLATION INNOVATION FORUM 2022

11/01/2022



Washington State
Department of
Commerce

Washington State Department of Commerce

We strengthen communities



**HOUSING
HOMELESSNESS**



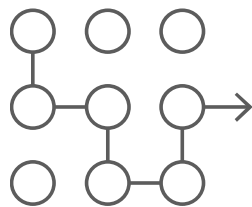
INFRASTRUCTURE



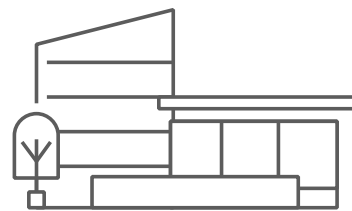
**BUSINESS
ASSISTANCE**



ENERGY



PLANNING



**COMMUNITY
FACILITIES**



**CRIME VICTIMS &
PUBLIC SAFETY**



**COMMUNITY
SERVICES**

Growth Management Services (GMS)

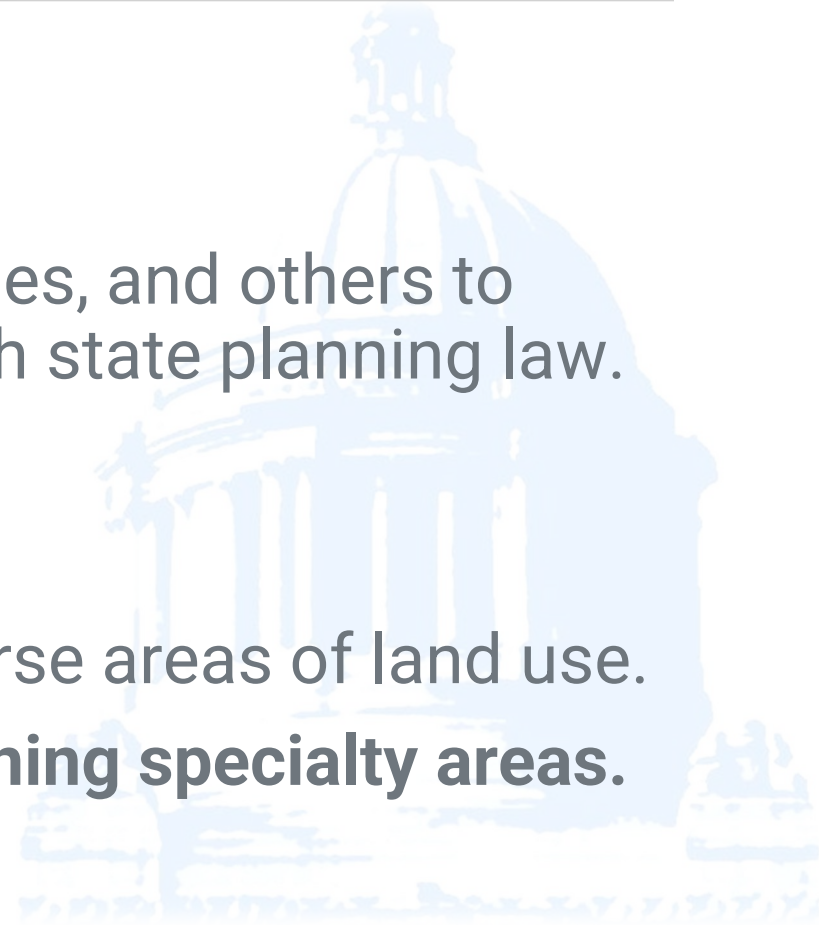
GMS Mission:

Assist and guide local governments, state agencies, and others to manage growth and development, consistent with state planning law.

What we do:

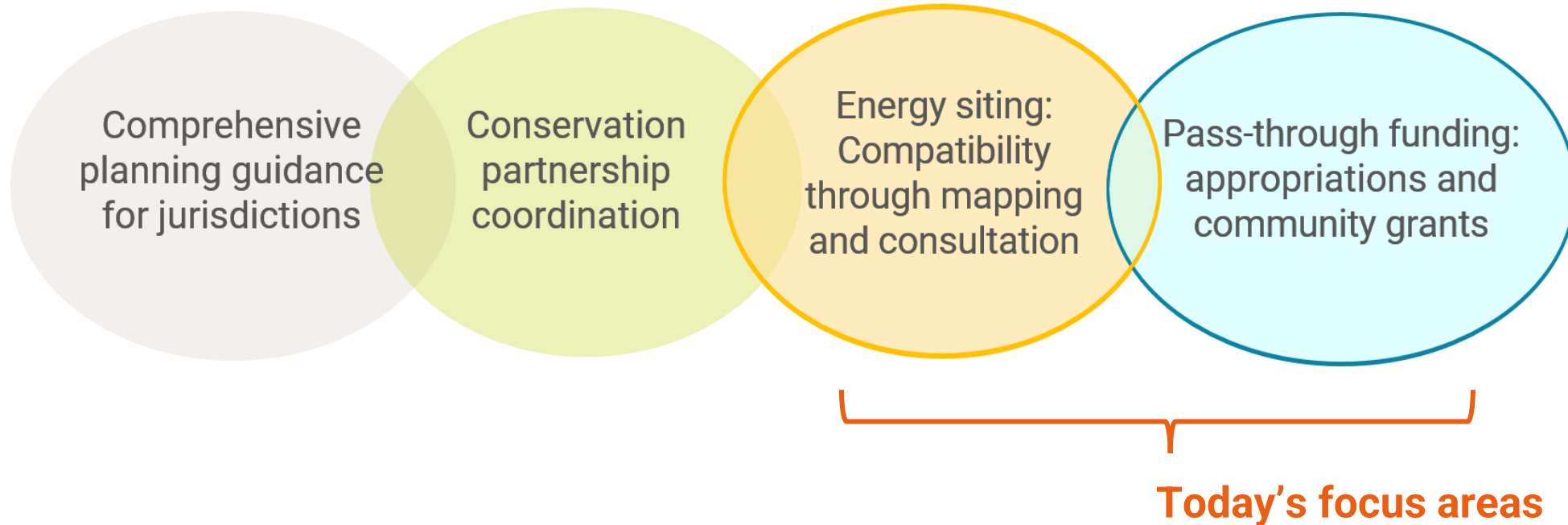
Provide specialized technical assistance for diverse areas of land use.

Civilian-military compatibility is among our planning specialty areas.



Growth Management Services (GMS)

Areas where the GMS unit has partnered with local jurisdictions and the military to promote coordination:



How our work has evolved

2015: Military & Defense Sector Development



2022: Civilian-military compatibility technical assistance portfolio

How our work has evolved

2015–2016

- * Military & Defense Sector strategic plan
- * Leads to first Commerce compatibility study

New topic for Growth Management Services
(Early goal: Establish a new specialty.)

2017–2018

- * Compatibility program strategic planning
- * Leads to new planning specialty

2 temporary planning specialists conduct outreach

2019–2020

- * Technical Assistance guidebook
- * New state-level grant program and legislative report

Outreach results in general staff training;
(Planning specialists retained; 1 permanent)

2021–2022

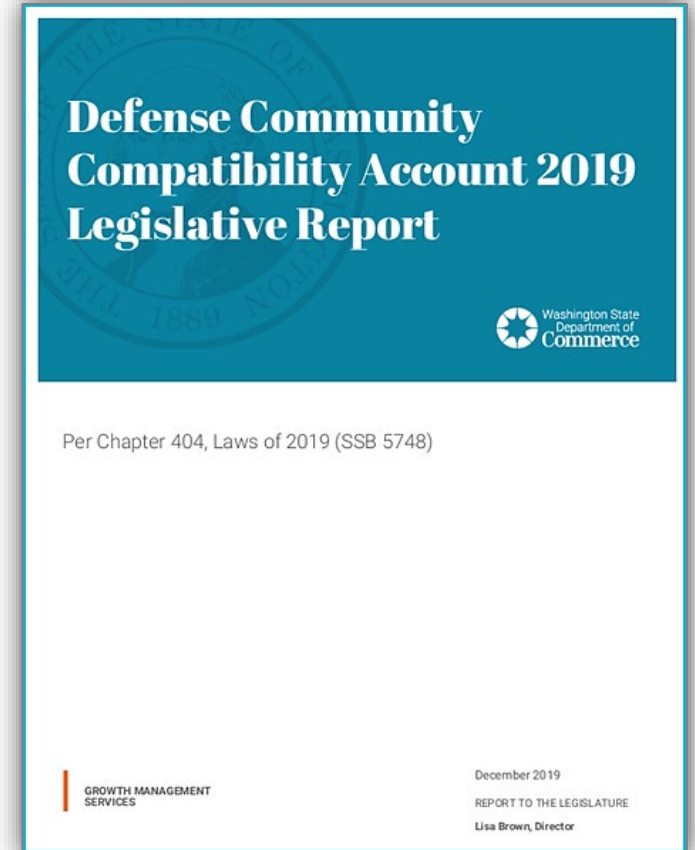
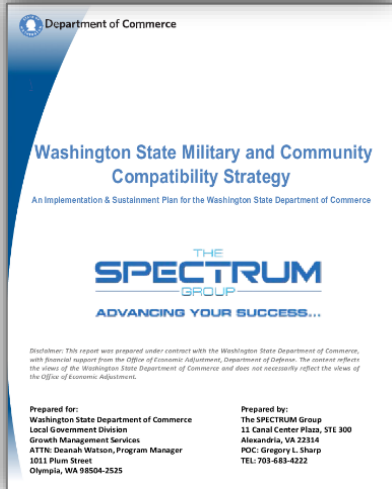
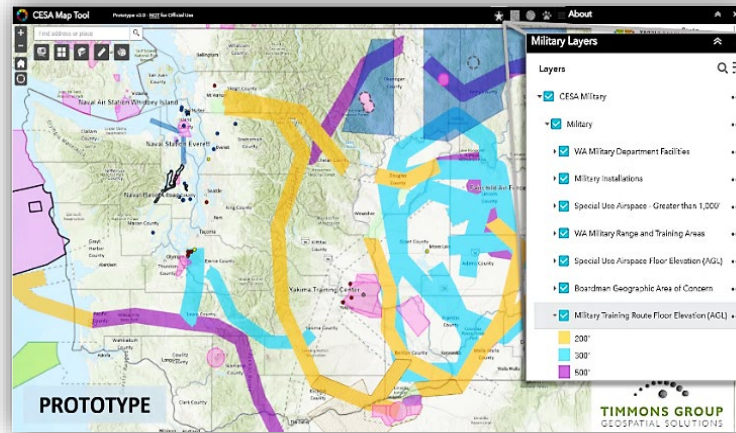
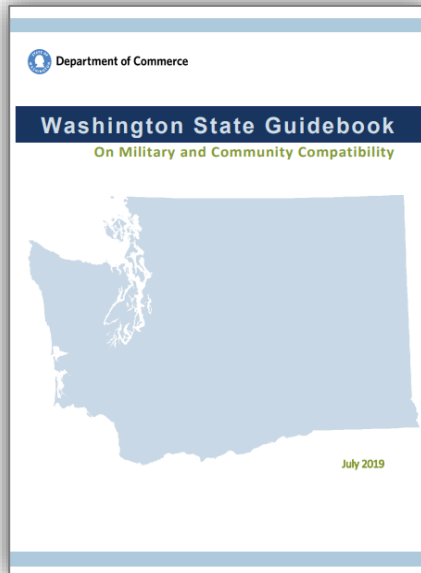
- * Prototype map tool promotes coordinated energy siting
- * Mapping needs report (*done*) and policy review (*active*)
- * State-grant applications and legislative report (*active*)

Outreach to other state agencies
(Permanently-integrated specialty area.)

* Indicates DOD-funded grant project. * Indicates state-level initiative.

1: Review best practices 2: Strategize

3: Implement strategic plan to promote best practices (ongoing)

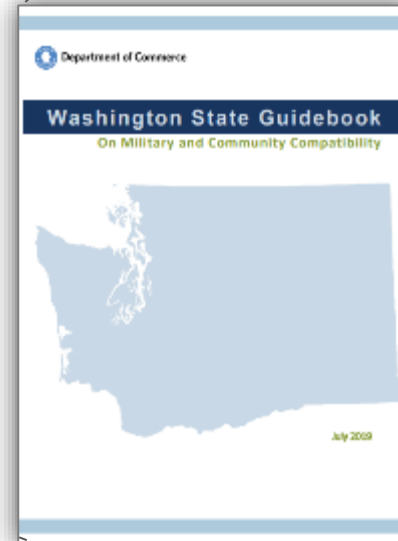


2019 Compatibility Guidebook

(update anticipated 2023)

Promotes coordination and outlines:

- Civilian planner/military planner roles
- Compatibility programs
- Best practices in local planning
- Case studies and example policies



Guidebook contents are organized for different audience needs. For instance, are you...

...New to the topic of civilian-military compatibility or planning processes in Washington state? Jump to:

Part 1: Community Guide

- [Civilian-Military Compatibility](#)
- [Land Use Planning Framework and Authorities](#)
- [Local Plans and Land Use Regulations](#)
- [Participation in Planning Process](#)
- [Environmental Review Processes](#)
- [Military Bases, Ranges, and Airspace](#)

...Seeking context on military planning or guidance for Growth Management planning? Jump to:

Part 2: Technical Guide

- [National Defense and Planning](#)
- [Base Plans and Joint-Planning](#)
- [Conservation Partnerships](#)
- [Compatibility in Land Use Plans and Codes](#)
- [Conclusion: Compatibility Relies on Coordination](#)

...Seeking case examples, policy references, or communication tools and contacts? Jump to:

Part 3: Implementation Toolkit

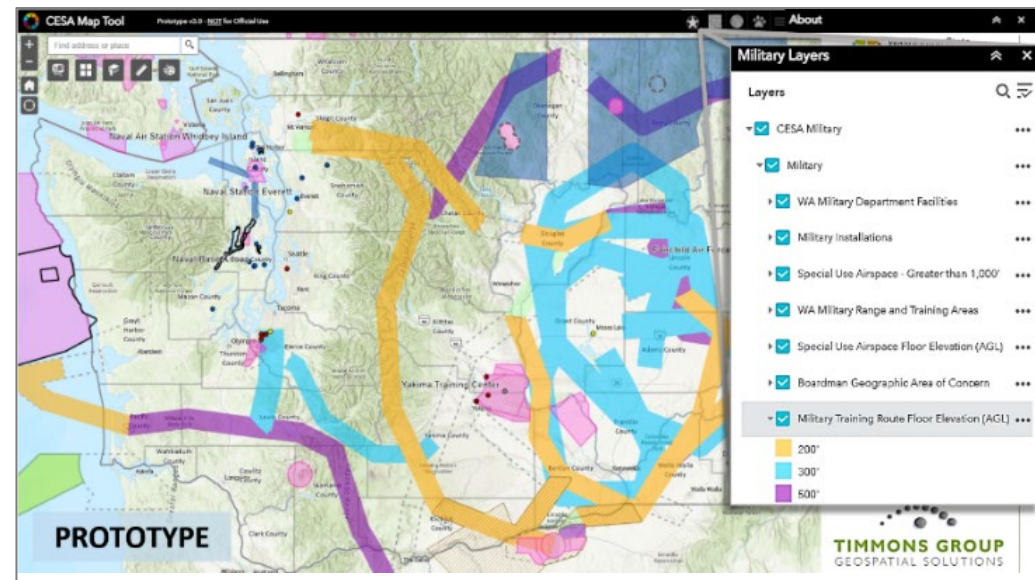
- [Sample Policy Language for Local Planning](#)
- [Sample Notifications, Disclosures and Checklists](#)
- [Consultation Guide with Maps and Contact Lists](#)

Compatible Energy Siting Assessment (CESA)

Map-based consultation-support tool (prototype) fosters military consultation

Site-specific consultation:

- Users: Developers/reviewers
- Automated siting reports
- Contact information
- Regulatory information
- Prototype accepted as a statewide model



Compatible Energy Siting Assessment (CESA)

Policy and procedural review

- Military needs and energy market assessment
- Federal/military project review/coordination
- State policies and compatibility in energy
- Washington's local practices
- Recommendations to promote coordination



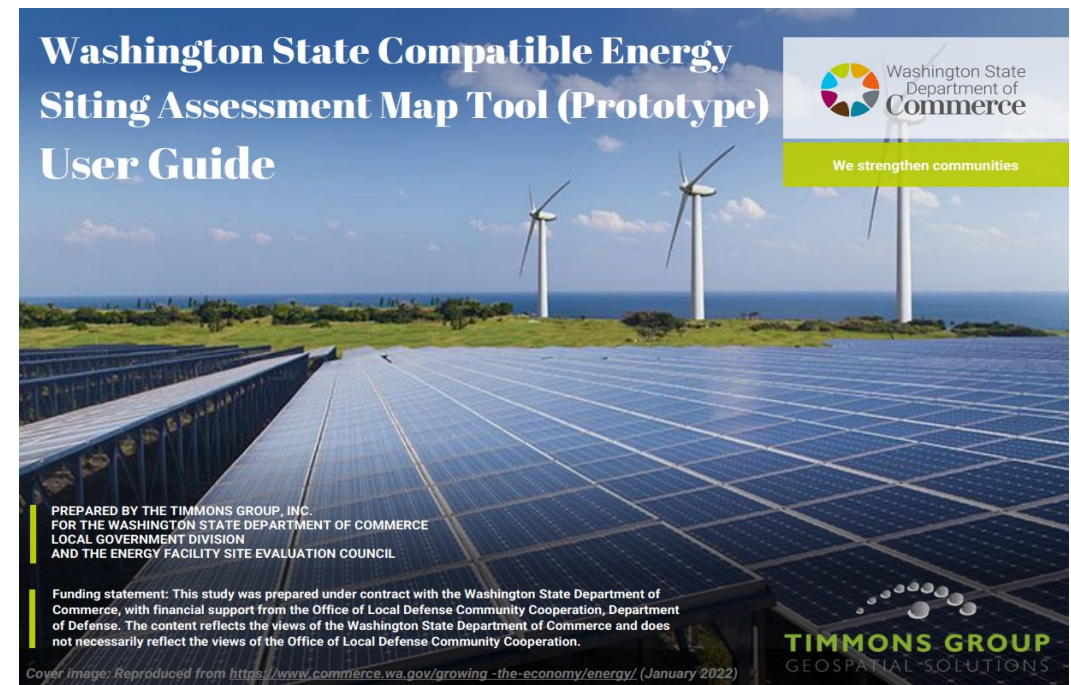
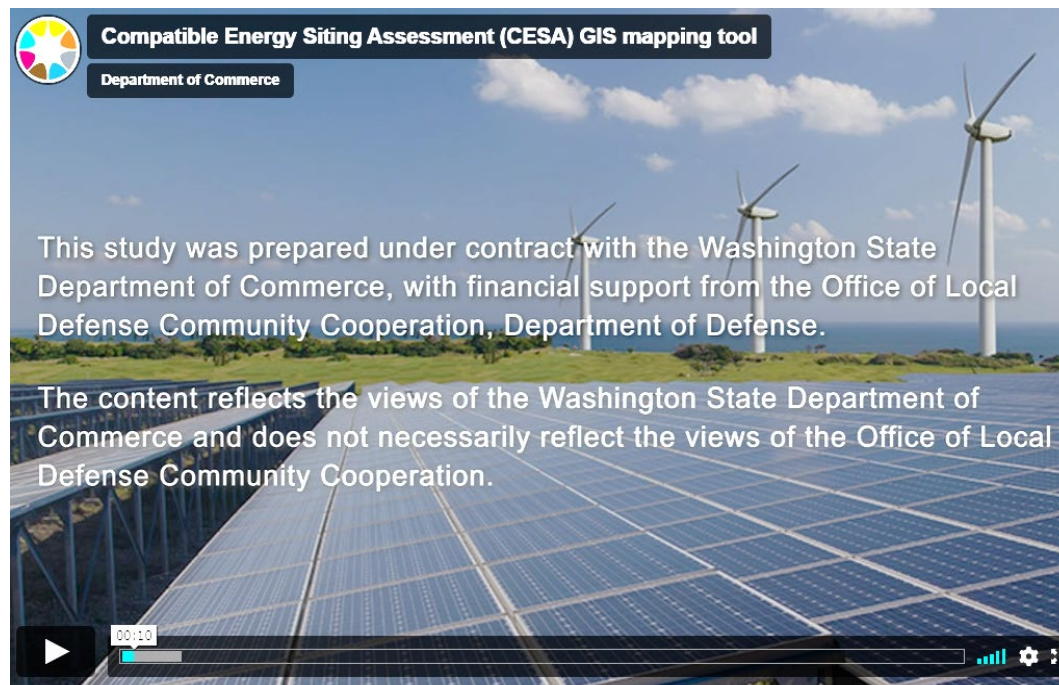
Compatible Energy Siting Assessment (CESA)



Compatible Energy Siting Assessment (CESA)

Supporting materials

- User guide, video tutorial, and an implementation strategy



Defense Community Compatibility Account (DCCA)

2019, Substitute Senate Bill 5748

Genevieve Dial, Program Manager



CIVILIAN-MILITARY COMPATIBILITY

DEFENSE COMMUNITY COMPATIBILITY ACCOUNT

Established by the 2019 Legislature:

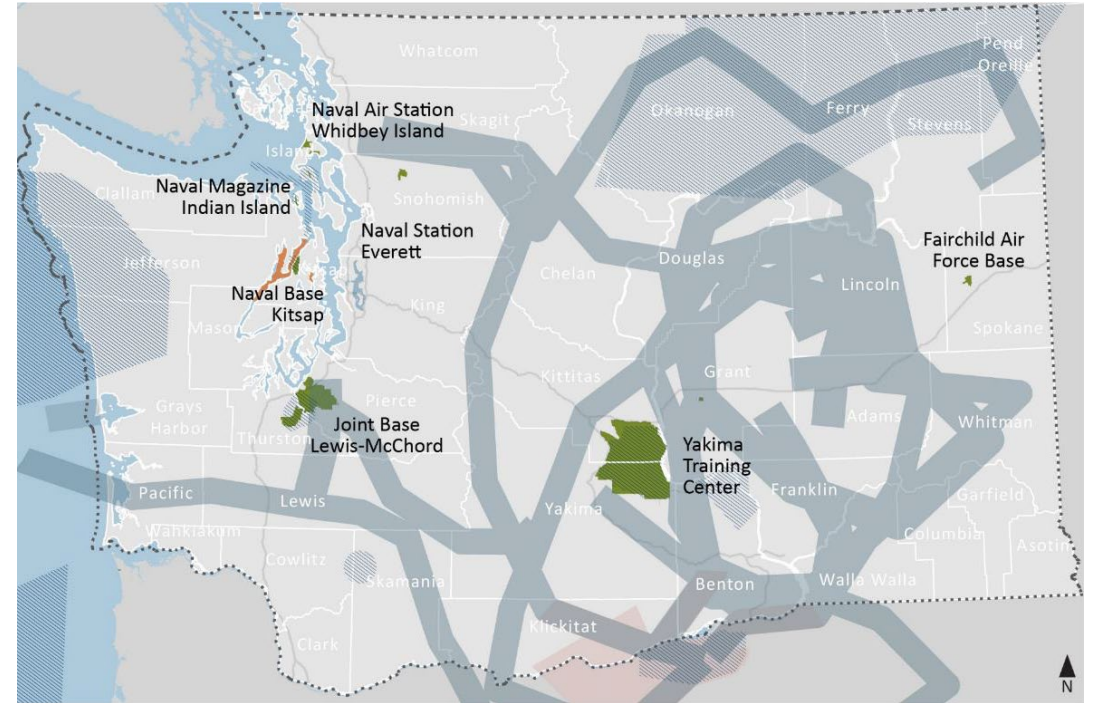
DCCA promotes land use compatibility between communities and military installations by funding implementation of compatible land use solutions.

Compatibility Project Potential

Washington hosts multiple military service branches across the State.

Communities and installations can work together to address the impacts of being neighbors, including:

- Transportation improvements
- Property acquisition
- Housing availability and affordability
- Habitat protection
- Economic development and job growth



Source: Washington State Guidebook on Military and Community Compatibility, Washington State Department of Commerce, (2019), <https://www.commerce.wa.gov/serving-communities/growth-management/growth-management-topics/military-base-land-use/>

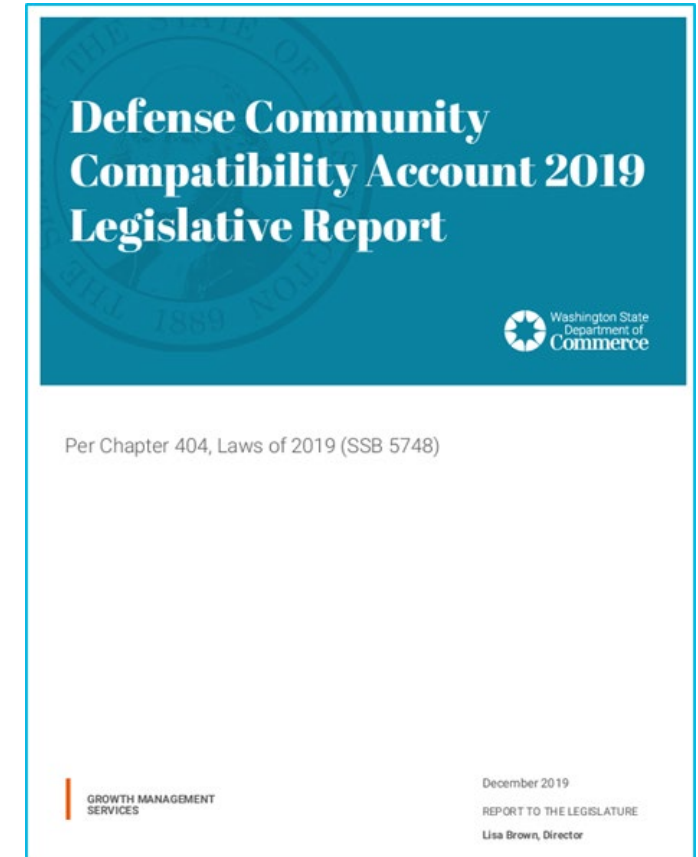
Defense Community Compatibility Account

Program Purpose: Support land use compatibility between local governments and military installations

- Establish first-ever statewide program for evaluating civilian-military compatibility projects.
- Provide predictable, consistent prioritization process for ranking projects with objective criteria.
- Leverage funding from local and federal sources to maximize state investments.
- Provide a reliable source of “ready-to-go” projects for funding consideration.

Defense Community Compatibility Account

- Commerce to produce a biennial report including a prioritized list of projects to address incompatible development near military installations.
- Project solicitation and initial outreach efforts began in 2019.
- The first Legislative report with project list submitted for 2020 session.



Eligible Applicants

- Local governments
- Federally recognized Indian tribes
- Entities in an agreement with a state military installation under DoD REPI program



Washington State
Department of
Commerce

2022-2023

Defense Community
Compatibility Account (DCCA)
Application Instructions

*This form **must be submitted** with
documentation to be
Application Instructions*



Washington State
Department of
Commerce

2022-2023

**Defense Community Compatibility Account (DCCA)
Program Application Instructions**

Application Window: Monday, Aug. 1 – Thur. Sept. 15, 2022

Question and Answer Window: Monday, Aug. 1 – Wed. Aug. 31, 2022

Example Projects

- Property acquisition to eliminate an existing incompatible use.
- Assistance in the recovery and protection of endangered species.
- An increase in the availability of affordable housing.
- Retrofitting existing uses to increase compatibility.
- Diversification of the local economy to reduce economic dependence.
- Replace jobs lost due to a reduction in military presence.
- Improvement or enhancement of the local economy, environment, or quality of life by the presence of military activities

Project Evaluation

- Project Scope
- Leveraged Funds
- Need and Priority
- Project Readiness
- Organizational Capacity

Bonus Points:

- BRAC, JLUS/CUP, REPI Recommendation
- Mission Viability
- Community Support

Individual Evaluation and Prioritization Scoring Form 2022 Defense Community Compatibility Account Program

EVALUATION CATEGORIES	POINTS POSSIBLE	TOTAL POINTS
Project Scope	0-10 pts	
Leveraged Funds	0-10 pts	
Need and Priority	0-10 pts	
Project Readiness	0-10 pts	
Organizational Capacity	0-10 pts	
Total Points	0-50 pts	
*Bonus	0-15 pts	
TOTAL POINTS:	65 pts	

2022 Call for Projects

- Aug 1- Sept 15, 2022
- Q and A window
- Project review and evaluation
- Ranked list and Project summaries
- Legislative report due Nov 1, 2022

Program Launch

- Program kick off
June 1, 2022
- Initiate ongoing program outreach

Project Solicitation

- Call for Projects Aug. 1 – Sept.15, 2022
- Q&A – Aug. 1 – 31, 2022

Project Review

- Evaluate and rank projects

Program Report

- DCCA report and project list due to the legislature in Nov, 2022

2022 Project List

- 15 applications received from 10 applicants
- Total DCCA funding request~\$62M
- Variety of project types:
 - Schools
 - Property Acquisition
 - Public Health/Water
 - Economic Development
 - Habitat conservation

Rank	Applicant	Project Name
1	City of Lakewood	North Clear Zone
2	Whidbey Camano Land Trust	Keystone Preserve
3	Lakewood Water District	CDS Well
4	Compatible Lands Foundation	REPI
5	Oak Harbor School District	Hand in Hand Early Learning Center
6	City of Bremerton	Quincy Square
7	Oak Harbor School District	Crescent Elementary

Project Summaries

- Applicant and project name
- Project site map
- Brief project description
- Estimated total project cost
- Total DCCA state funds requested
- Total federal, local, and applicant leveraged funds
- Project partners
- Project contact

Project Profile Summary: #1

South Sound Military and Communities Partnership (SSMCP)
Coordinating Development of Accessory Dwelling Units as Affordable Housing for JBLM

Project Site



Project Description:
In order to create the development of accessory dwelling units (ADUs) as an affordable rental housing option for Joint Base Lewis McChord (JBLM) service members, SSMCP seeks to secure funds to:

- Create a tracking system of adopted ADU authorization and regulation in Pierce and Thurston County jurisdiction;
- Collect and/or coordinate the drafting of model ADU zoning and code language for local governments in Pierce and Thurston Counties, where most JBLM service members and their families live, to consider adopting; and
- Develop online and written model training materials for property owners with ADUs to explain the benefits to renting to service members and their families.

Total project cost:
\$112,950

Total state funds requested:
\$70,060

Total leveraged funds:
Federal: \$4,800
Local: \$37,550

Project location:
Pierce and Thurston Counties

Project timeline:
October 2019 - May 2021

Project partners:

- City of Lakewood
- Joint Base Lewis McChord
- City of Lacey

Project contact:
Sarah Luna
PROGRAM COORDINATOR
South Sound Military and Communities Partnership
Email: sluna@cityoflakewood.us
Phone: 253-983-7774

MARYLAND

Compatible Energy Siting



MARYLAND
MILITARY+
COMMUNITY
COMPATIBLE USE

Supporting Maryland's Defense Communities



Maryland's Compatible Use Plan

Lisa Swoboda

Senior Director, Office of Military and Federal Affairs, Maryland Department of Commerce; ADC Board of Directors

Sarah Diehl

Compatible Use Community Planning Liaison, Maryland Department of Planning

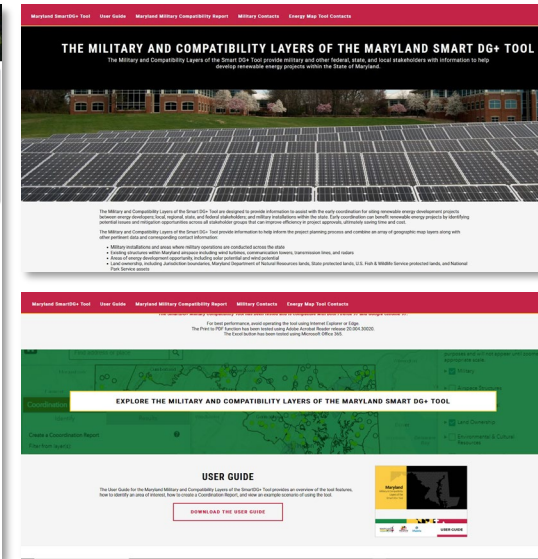
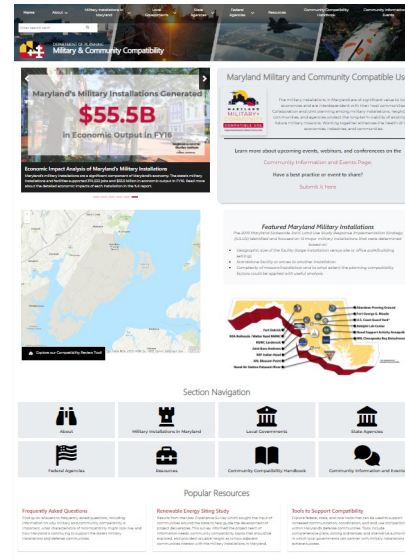
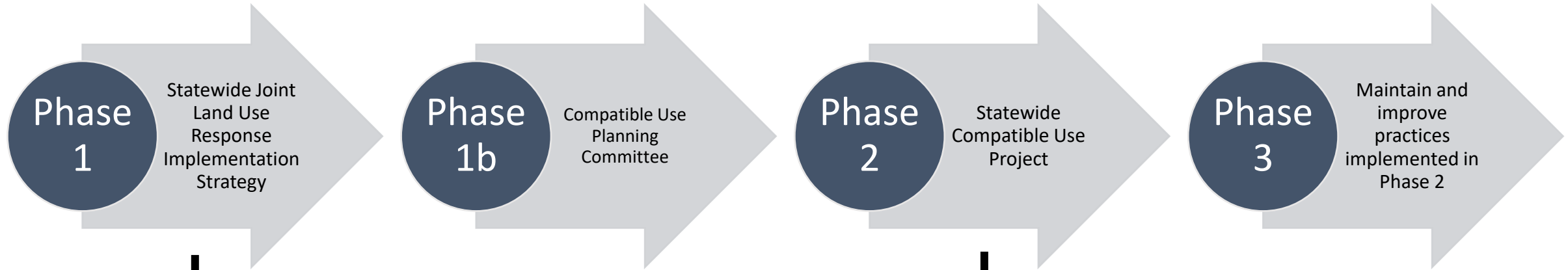


Maryland
DEPARTMENT OF COMMERCE



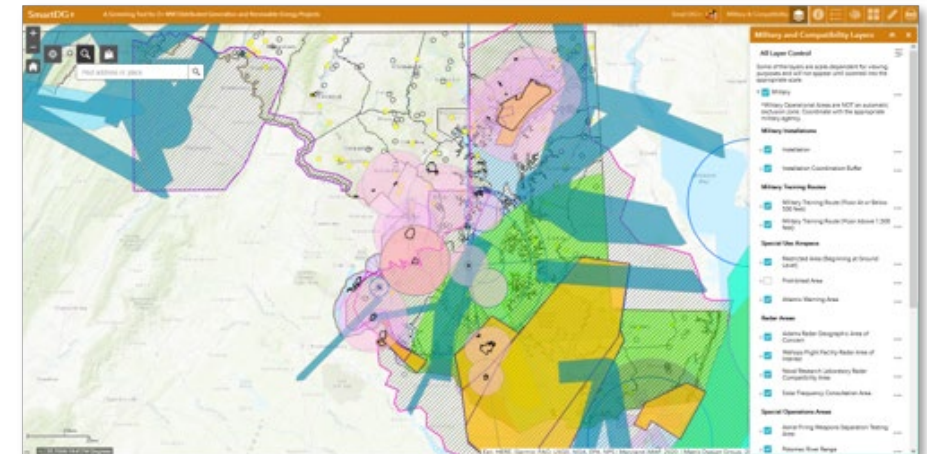
Maryland
DEPARTMENT OF PLANNING

Maryland's Compatible Use Plan



Renewable Energy Siting Study

- A collaborative process between **state agencies, local governments, military installations, regional military partnership organizations, and the renewable energy industry.**
- Provide information and tools to **mitigate potential compatibility conflicts** early in the renewable energy development siting process
 - Military & Compatibility Layers for the Maryland Department of Natural Resources, Power Plant Research Program's existing online SmartDG+ renewable energy screening tool:
 - Show areas of military operations
 - Improve awareness of possible development conflicts prior to a renewable energy developer's purchase or lease of land
 - Provide information for early coordination with the military to assist renewable energy developers with decision-making when making land purchases or leasing decisions
 - Project Report with recommendations on enhancing existing siting approval processes to facilitate compatibility with military operations



Renewable Energy Siting Study Participants

	Participants	Responsibilities
Sponsor	Maryland Department of Commerce	Coordination Accountability Grant Management Financial Contribution
Steering Committee	State Departments and Agencies Renewable Energy Industry Federal Agencies County / Municipal Government Associations Military Installations and Facilities	Policy Direction Study Oversight GIS Mapping Development Compatibility Recommendations
Stakeholders	State Departments and Agencies Federal Agencies Renewable Energy Industry Regional Military Partnership Organizations Local Governments Military Installations and Facilities	Technical Expertise and input Web Tool Beta Testing Compatibility Recommendations

Renewable Energy Siting Study Outcomes

Project Report

- Characterizes military operations
- Explains military operations in relation to renewable energy development
- Provides recommendations to improve existing coordination between energy developers and the military for compatible siting of renewable energy projects
- Includes two case studies of how SmartDG+ can enhance existing coordination processes with the military and improve compatible siting of renewable energy projects
- Provides guidance language to local governments for renewable energy model ordinances

Military & Compatibility GIS Layers

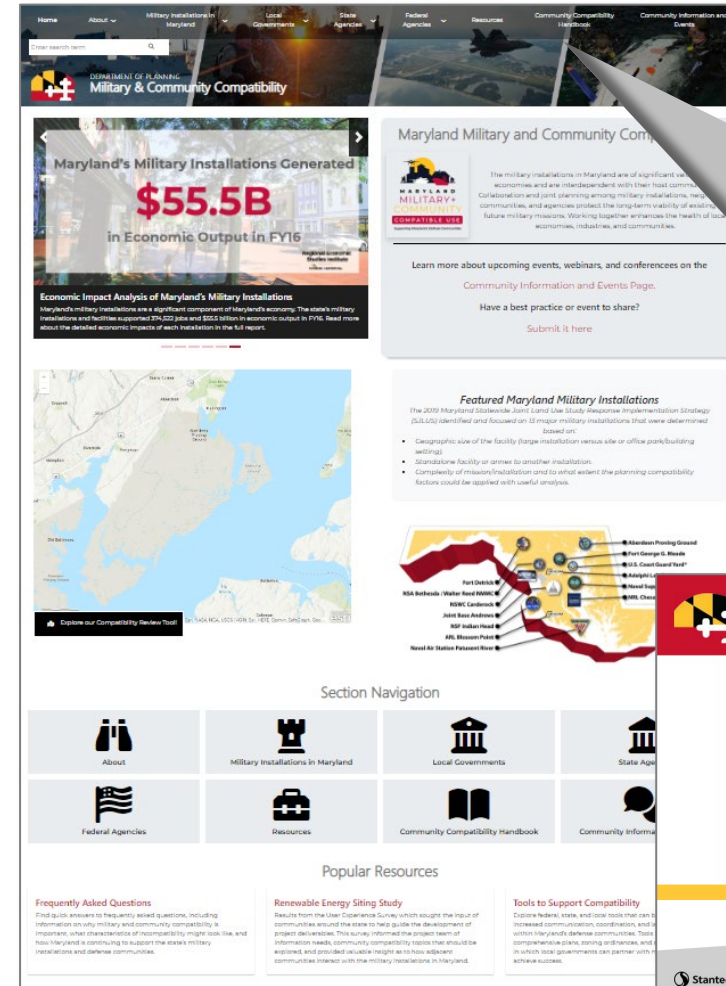
- Enhances existing online SmartDG+ renewable energy screening tool
- Provides users with visual map interface and information to facilitate compatible renewable energy project siting
- **Does not provide exclusion areas for development and does not replace or constitute federal, state, or local processes for siting review of renewable energy projects**
- New map layers added:
 - Military operational areas
 - Military and non-military airspace structures
 - Renewable energy potential
 - Environmental and cultural resources
 - Land ownership
- Coordination report tool to create or upload custom areas of interest
 - Outputs vicinity map, data, and points of contact for every layer within the selected area

Compatible Use Website and Handbook



Land use technical assistance and guidance for local planners on compatible use issues

- **Purpose:** Raise awareness of the economic impact of the military mission in Maryland and build community engagement while providing local communities with the tools and resources they need to ensure compatible use with military operations in their community.
- Resources guide and facilitate the implementation of recommendations from the **2019 Statewide Joint Land Use Response Implementation Strategy (SJRIS)**.
- **Target audience:** military communities and members, state and local leaders, community organizations, and the general public.



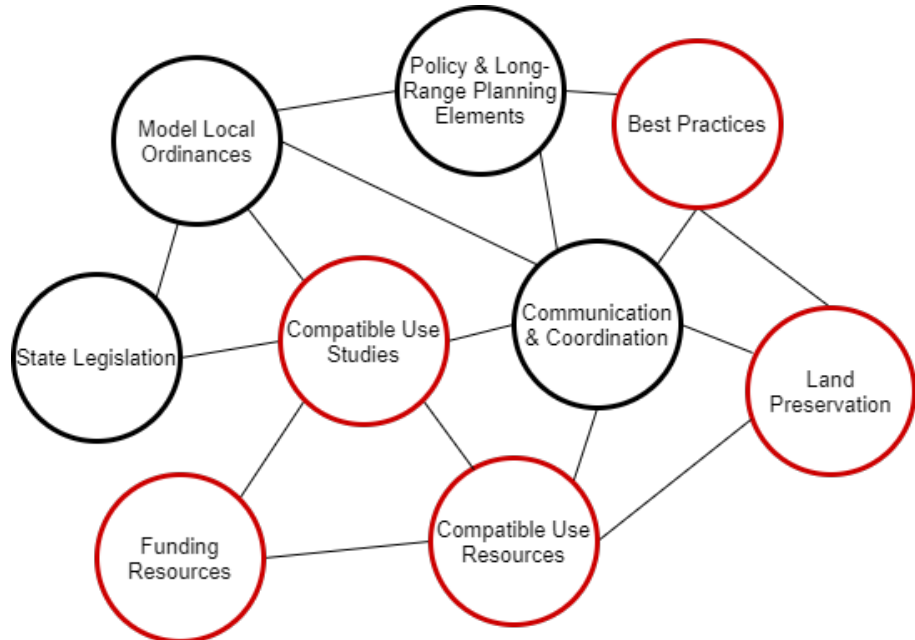
Website Tabs

- About
- Military Installations in MD
- Local Governments
- State Agencies
- Federal Agencies
- Resources
- Community Compatibility Handbook
- Community Information and Events

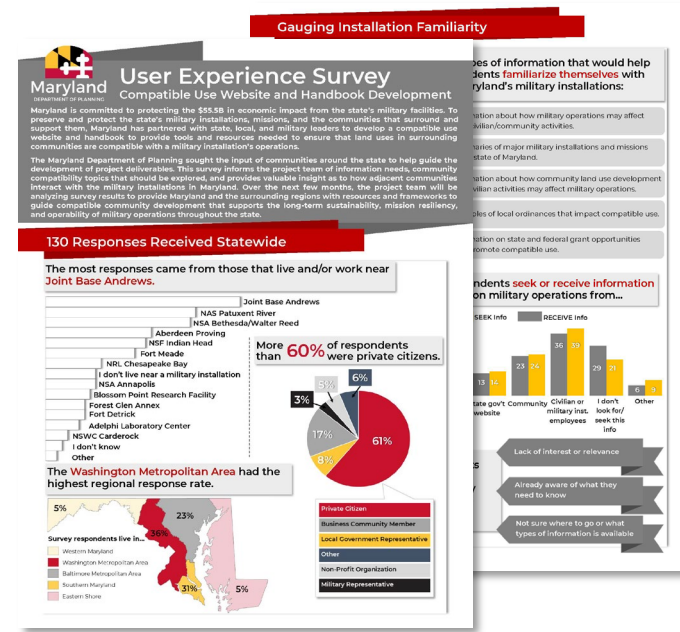


A Stakeholder Driven Process

- Regular stakeholder meetings
- Collection of existing resources from both in and out of state – best practices, contacts, etc.
- Gain understanding of what types of resources would be most beneficial to MD's military communities.



Project subcommittees



Statewide survey launched in fall 2021 guided top policy and support considerations and the types of information website users would like to know.

What we heard

Noise Infrastructure **Coordination**
 Compatible Use Studies
 AICUZ Collaboration Need for data
 Mapping **Communication**
 REPI Funding Partnerships
 Audiences



Sample Resources

Detailed information on the compatible use organizations, programs, and resources that are available at each installation

Welcome


Introduction

Importance of Compatibility

Guide to Using Website

Website Background & Development Process

Importance of Compatibility



The relationship between military installations and surrounding communities has become increasingly interrelated. Installations that were once located in rural or isolated areas are seeing the effects of growth and development of surrounding communities while communities need to adapt to shared infrastructure needs. To protect the current and future needs of both parties, a collaborative working relationship must exist. *[For the purposes of brevity, the terms "surrounding communities" and "local communities" are used throughout this website as a generic term that includes states, counties, townships, cities, and other municipalities that have a role in regulating planning and development.]* State, regional, and local government officials, non-governmental and community-based organizations, private citizens, and installation leaders and managers need to have a greater understanding of each other's concerns, future needs, and current planning processes to assess how planning decisions on the part of the military or local government may impact one another.

Incompatible development may compromise the ability to accomplish the respective goals and objectives of a community, military installation, or both. Limiting the local jurisdictions' ability to develop in certain areas may hinder that locality's ability to set the stage for needed economic development and plan a vision for the future, while incompatible development near the installation may hinder the ability to conduct critical military training or other missions. In the worst-case scenario, these challenges can result in conflicts between military installations and their surrounding communities over what constitutes a "compatible" land use, polarized positions on shared issues, and ultimately a lack of trust.

The state of Maryland realizes the importance of fostering and promoting compatibility between our local communities and the state and military installations. Military installations play a vital role in national defense and are centers of innovation. They serve as major economic engines for communities, accounting for thousands of jobs and billions of dollars in economic activity and tax revenue. Local communities and leaders are responsible for continued economic development and planning a vision for the future that continues to provide vibrant, livable communities that meet the needs of current residents and attract new residents and businesses.

Maryland's military installations and local communities are inextricably linked via the economic development, shared infrastructure, and quality of life impacts they have across the state. According to an FY16 Economic Impact Study conducted by Towson University for the Maryland Department of Commerce, this impact totals \$55.5B per year.

Maryland's military installations generated

\$55.5B

in economic output in FY 2016


Compatible community development initiatives

Why compatible use is important

Quick Links

- [FAQ](#)
- [Definitions & Acronyms](#)
- [Guide to Using the Website](#)

Overview	▼
Featured Military Installations	▲
Aberdeen Proving Ground	
Adelphi Lab Center	
Blossom Point	
Fort Detrick	
Fort Meade	
Joint Base Andrews	
NAS Patuxent River	
NRL Chesapeake Bay Detachment	
NSA Annapolis	
NSA Bethesda	
NSF Indian Head	
NSWC Carderock	
U.S. Coast Guard Yard	
National Guard Facilities	
Reserve Facilities	



Joint Base Andrews

Compatible Use Organizations, Programs, and Resources

For more information on how JBA works with the surrounding communities to build a strong and mutually beneficial relationship, you can explore compatible use organizations, programs, and resources.

Community Resources to Promote Compatibility

Military installations and their host communities have strong and mutually beneficial relationships. They rely on and support one another in terms of jobs, housing, schools, recreation, infrastructure, and social services. Communication, coordination, and partnerships that support compatible community development can create mutually beneficial results to ensure support for warfighters and their families, military operations, and continued community growth and economic development.

- + JOINT BASE ANDREWS JOINT LAND USE STUDY PROGRAM
- + RELATED STUDIES
- + LOCAL COMPREHENSIVE PLANNING
- + NATIONAL CAPITAL PLANNING COMMISSION

Economic Resources to Promote Compatibility

A jurisdiction's economic development office and support organizations offer a variety of resources. These resources are particularly valuable for defense communities that are continually looking for ways to attract a skilled workforce, and provide resources and opportunities for military families and their communities.

Quick Links

- [Joint Base Andrews](#)
- [Joint Base Andrews School Liaison Office](#)
- [For Newcomers at Joint Base Andrews](#)
- [Joint Base Andrews Environmental Page](#)
- [FAQ](#)
- [Definitions & Acronyms](#)
- [Guide to Using the Website](#)


Contact

316th Wing Public Affairs Office
1500 West Perimeter Road
Suite 2330
Joint Base Andrews
MD 20762

Phone: (240) 612-4428

[Public Affairs Office Website](#)

Military Background in Maryland



Click on an installation above to learn more.



Sample Resources

Overview

Local Government Planning and Tools to Support Compatibility

Overview

Understanding Planning in Maryland

Local Governments and Military Installation Resilience

Compatibility Planning Framework and Tools For Maryland Communities

Local Ordinance Development Guidance

Outreach and Communication for Planning Coordination

Best Practices

Compatibility Review Mapping

Compatibility Planning Framework and Tools for Maryland Communities

Compatibility Planning Framework

Compatible use planning plays a critical role in protecting both a community and the military. This community-led planning effort also presents an opportunity to increase public awareness of military operations and their impacts on the regional economy, and ensures a smooth transition to civilian life. Strong military operations, and support continue to be a vital part of the regional economy, and ensuring a smooth transition to civilian life. Strong military operations, and support continue to be a vital part of the regional economy, and ensuring a smooth transition to civilian life.

- Compatibility Planning Framework
 - Plans and Studies to Support Compatibility
 - Implementation Resources and Tools
 - The Planning Process

Outline of a Compatible Use Ordinance

Compatible use ordinances can vary greatly in their structure. Set forth below are descriptions of the sections that typically appear in ordinances, with some examples from adopted ordinances.

Introduction

The introduction briefly describes the compatibility issues surrounding military installations and those areas where those issues arise, along with why and how the jurisdiction decided to propose an ordinance. What is the name of the local installation? What sort of operations happen there, and what is the installation's importance to the community? What are the most important compatible use issues? Safety? Noise? How do those issues affect the community? Is there a CUS or some other process that governs consideration of the ordinance and, if so, what are the important dates in that process? What is the ordinance's purpose and intent?

Example from the Prince George's County Ordinance:

- "Joint Base Andrews Naval Air Facility is located in the Prince George's County, Maryland, and is the second largest military installation in the United States. It is a major employer in the region and is the second largest employer in the Prince George's County. The installation is a major employer in the region and is the second largest employer in the Prince George's County. The installation is a major employer in the region and is the second largest employer in the Prince George's County.

Best Practices

What's In This Section

- Definitions of compatibility categories
- Highlights of several best practices implemented in Maryland or other states
- Summary table of best practices, including links for more information

Military installations and surrounding communities must work together to effectively address and mitigate issues that may affect the community's ability to grow and/or the installation's ability to conduct operations and training. State and local government officials, private citizens, and installation representatives should understand each other's priorities, needs, and planning processes to assess how respective planning decisions can affect other parties. This tab provides information and examples of best practices that have been implemented across the country to improve compatibility and relationships between military installations and their respective surrounding communities.

Compatibility Review Tool

Find address or place

Map showing military installations and compatible use zones in Maryland. The map includes labels for various locations like Harrisburg, Reading, Lancaster, and Annapolis. It also shows geographical features like the Allegheny Mountains and the Blue Ridge Mountains.

Compatible Use Website: Content Submission

Please use this form to submit content or ideas to be featured on the Maryland Department of Planning's Compatible Use website. Note that you will not be able to upload documents within this form; make sure to provide contact information so that we may reach out with document submission instructions if applicable.

Questions? Contact Sarah Diehl (sarah.diehl@maryland.gov)

sarah.diehl@maryland.gov (not shared) Switch account Draft saved

* Required

Name *

Sarah Diehl

Email *

sa

Submission Type *

Event/Conference

Webinar

News Item

Best Practice

Funding Resource

Plans and Programs

Other: _____

How Agency Supports Military and Community Compatible Use

The Maryland Department of the Environment (MDE) is a statutory member of the Maryland Military Installation Council (MMIC) and a key facilitator of the strong working relationship with the DoD on matters of environmental concern to the state and military communities. MDE works closely with installations on state environmental priorities and regulates installations with existing laws and policies that address potential environmental impacts associated with military activities. MDE plays a key supporting role in implementing the recommendations of the 2019 Statewide Joint Land Use Response Implementation Strategy to facilitate community and military compatibility.

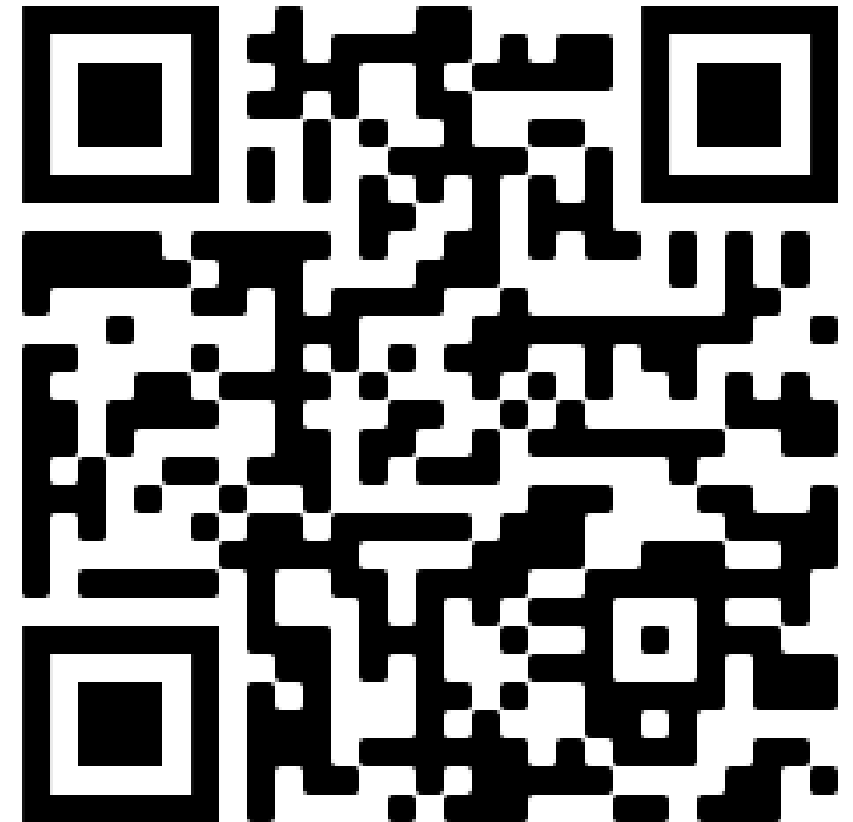
MDE works closely with military installations under specific agreements that foster military input with state environmental priorities. An example of this can be seen in the Chesapeake Bay Restoration, in which installations work with the surrounding community to help the state reach its Bay Watershed implementation goals. As noted below, MDE has an array of laws, rules, and policies that address potential environmental impacts associated with military operations. To help facilitate understanding state regulatory requirements, MDE meets regularly with environmental managers from the Department of Defense under an intergovernmental partnership agreement (IGSA).

MDE works closely with military installations under specific agreements that foster military input with state environmental priorities. An example of this can be seen in the Chesapeake Bay Restoration, in which installations work with the surrounding community to help the state reach its Bay Watershed implementation goals. As noted below, MDE has an array of laws, rules, and policies that address potential environmental impacts associated with military operations. To help facilitate understanding state regulatory requirements, MDE meets regularly with environmental managers from the Department of Defense under an intergovernmental partnership agreement (IGSA).

In addition, MDE is one of seven state agencies that take part in the review of Certificate of Public Convenience and Necessity (CPCN) applications for Air Quality, Water Quality/Quantity, Noise/Vibration, Dust/Smoke/Steam permitting approval of utility-scale renewable energy projects (along with the Department of Natural Resources, Maryland Energy Administration, Department Planning, Maryland Department of Transportation, and the Department of Commerce). MDE is also a part of the Federal Offshore Siting Process for Renewable Energy projects.



- Learn more and keep a lookout for the launch of the **Compatible Use website**
 - Anticipated launch in early winter 2022



Thank you!



Deanah Watson

Program Manager, Compatible Energy Siting Assessment (CESA)
deanah.watson@commerce.wa.gov | 509-290-4754

Genevieve Dial

Program Manager, Defense Community Compatibility Account (DCCA)
gen.dial@commerce.wa.gov | 509-675-5508



Lisa Swoboda

Senior Director, Office of Military and Federal Affairs; ADC Board of Directors
lisa.swoboda@maryland.gov | 410-767-6077

Sarah Diehl

Compatible Use Community Planning Liaison
sarah.diehl@maryland.gov | 410-767-4547





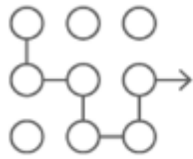
Washington State Resource Slides

The following slides are provided for general reference. Contents include:

1. Washington's military-compatibility and notification statutes
2. Screen-shot demo of the state's energy-consultation map tool (Prototype)

Military compatibility and coordination in state law

Revised Code of Washington: 36.70A.530 RCW—The Growth Management Act (GMA)



PLANNING

RCW 36.70A.530

Land use development incompatible with military installation not allowed—Revision of comprehensive plans and development regulations.

(3) A comprehensive plan, amendment to a plan, a development regulation or amendment to a development regulation, **should not allow development in the vicinity of a military installation that is incompatible with the installation's ability to carry out its mission requirements.** A city or county may find that an existing comprehensive plan or development regulations are compatible with the installation's ability to carry out its mission requirements.

(4) As part of the requirements of RCW **36.70A.070**(1) each county and city planning under RCW **36.70A.040** that has a federal military installation, other than a reserve center, that employs one hundred or more personnel and is operated by the United States department of defense within or adjacent to its border, **shall notify the commander of the military installation** of the county's or city's intent to amend its comprehensive plan or development regulations **to address lands adjacent to military installations to ensure those lands are protected from incompatible development.**



ENERGY

RCW 36.01.320

Application for a permit to site an energy plant or alternative energy resource—Written notice to United States department of defense.

(1) Upon receipt of an application for a permit to site an energy plant or alternative energy resource that is connected to electrical transmission facilities of a nominal voltage of at least one hundred fifteen thousand volts, **the county shall notify in writing the United States department of defense.** The notification shall include, but not be limited to, the following:

- (a) A description of the proposed energy plant or alternative energy resource;
- (b) The location of the site;
- (c) The number and placement of the energy plant or alternative energy resource on the site;
- (d) The date and time by which comments must be received by the county; and
- (e) Contact information of the county permitting authority and the applicant.

(2) **The purpose of the written notification is to provide an opportunity for the United States department of defense to comment upon the application, and to identify potential issues relating to the placement and operations of the energy plant or alternative energy resource, before a permit application is approved.** The time period set forth by the county for receipt of such comments shall not extend the time period for the county's processing of the application.

2022 Washington State Compatible Energy Siting Assessment

Prototype map tool: Screenshot tutorial

2022 CESA Prototype
Launch page

Washington State Department of Commerce

CESA Prototype About Tool Data More

Sign In

CESA Map Tool Prototype v3.0 - 2022 for Official Use

Find address of place

Washington State Department of Commerce

Welcome to the CESA Map Tool

IMPORTANT NOTICE: This CESA Map Tool is under development and should NOT be used for siting or decision-making purposes. This tool may not contain the most current information for siting displayed, including military training, testing and operating areas where military operations are suggested. This is only a prototype tool and is NOT authorized for official use.

Project Purpose

The State of Washington is committed to increasing the supply of renewable energy. We seek to support developers in identifying suitable sites for energy development which present the least conflict with other resource needs. Consultation early in a project is important for well-informed planning. This mapping tool is designed to promote early and ongoing communication between renewable energy developers and governmental entities (civilian, military, and tribal) in support of successful site selection for new facilities.

This tool is designed to support recommended coordination on siting needs and for help navigating state and federal regulations including the State Environmental Policy Act (SEPA) (RCW43.21C; WAC192-11). In particular, we urge developers to consult with the military as early as possible in the initial site identification process, well before the application phase. Early consultation reduces risk of project delays or impacts to military training, testing and operating areas. Explore the following status for additional information:

- **RCW 43.01.020:** Application for a permit to site an energy plant or alternative

Launch CESA Prototype v3.0

For best user experience, this site is best viewed using the current browser version of Chrome, Microsoft Edge (non legacy version), Firefox, or Safari. If you are using an out-of-date browser, you may encounter issues with certain sections of the website or tool.

<https://cesa-wacommerce.hub.arcgis.com/>

2022 Washington State Compatible Energy Siting Assessment

Prototype map tool: Screenshot tutorial



Launch CESA Prototype v3.0

[2022 Mapping Needs and Development Strategy Supplemental Report](#)

[Map Tool Video Tutorial](#)

[User Guide Document](#)

2022 CESA Prototype Launch page

Project resources:



<https://cesa-wacommerce.hub.arcgis.com/>

2022 Washington State Compatible Energy Siting Assessment

Prototype map tool: Screenshot tutorial

The screenshot displays the CESA Map Tool interface. At the top, the title bar reads "CESA Map Tool" and "Prototype v3.0 - NOT for Official Use". Below the title bar is a search bar with the placeholder text "Find address or place" and a search icon. To the left of the search bar are several navigation icons: a plus sign, a minus sign, a home icon, a refresh icon, a magnifying glass, a grid, a graduation cap, a pencil, and a play button. The main area is a map showing a portion of Washington State, including Jefferson County, Keyport, Naval Base Kitsap, Quinault Reservation, Olympic National Forest, and Bremerton RR. A white dialog box is overlaid on the map, featuring the Washington State Department of Commerce logo and the following text:

Welcome to the Washington State CESA Map Tool

IMPORTANT NOTICE: This CESA Map Tool is under development and should NOT be used for planning or decision-making purposes. This tool may not contain the most current information for features displayed, including military training, testing and operating areas where military operations are suggested. This is only a sample tool and is NOT authorized for official use.

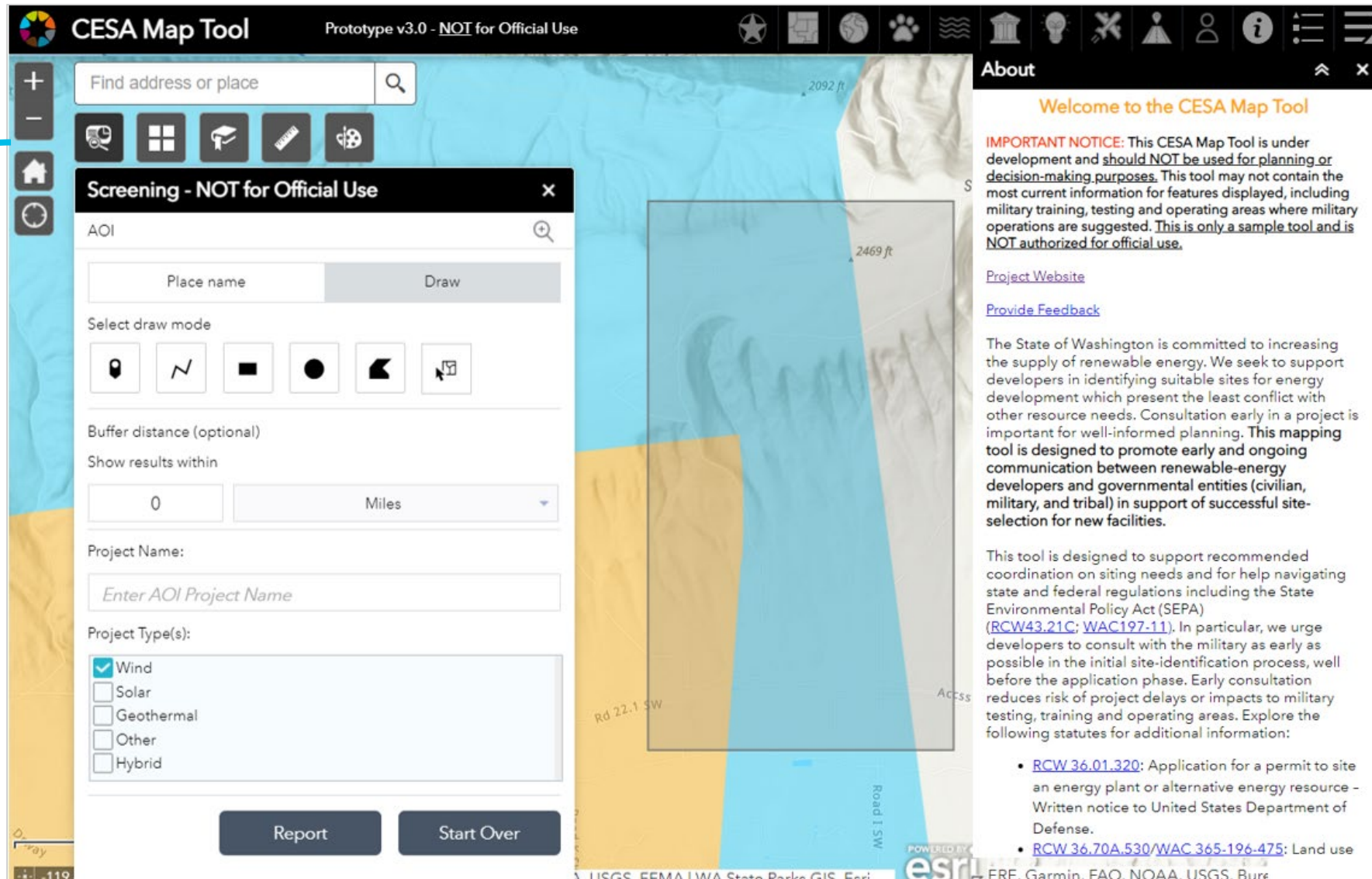
I agree to the above terms and conditions

OK

In the background, an "About" window is partially visible, showing the Washington State Department of Commerce logo and the text: "Welcome to the CESA Map Tool", "IMPORTANT NOTICE: This CESA Map Tool is under development and should NOT be used for planning or decision-making purposes. This tool may not contain the most current information for features displayed, including military training, testing and operating areas where military operations are suggested. This is only a sample tool and is NOT authorized for official use.", "Home", "Feedback", and "If Washington is committed to increasing the use of renewable energy. We seek to support projects in identifying suitable sites for energy development which present the least conflict with resource needs. Consultation early in a project is essential for well-informed planning. This mapping tool is designed to promote early and ongoing communication between renewable-energy developers and governmental entities (civilian

2022 Washington State Compatible Energy Siting Assessment

Prototype map tool: Screenshot tutorial



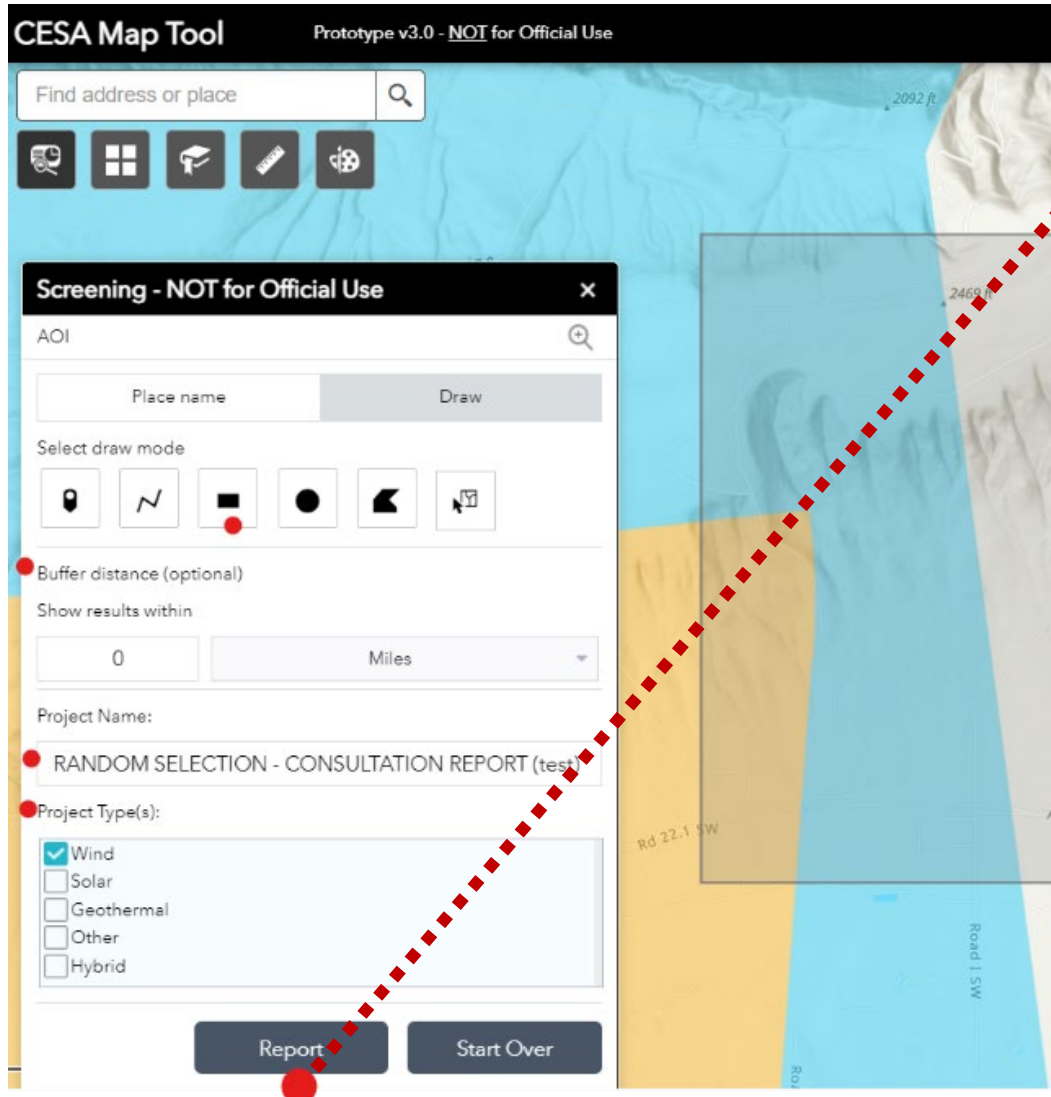
Layer menu to customize visual features.

Introduction for disclaimers and to recommend early/ongoing civilian-military consultation, with links to regulatory information.

Screening features to generate site-specific consultation reports.

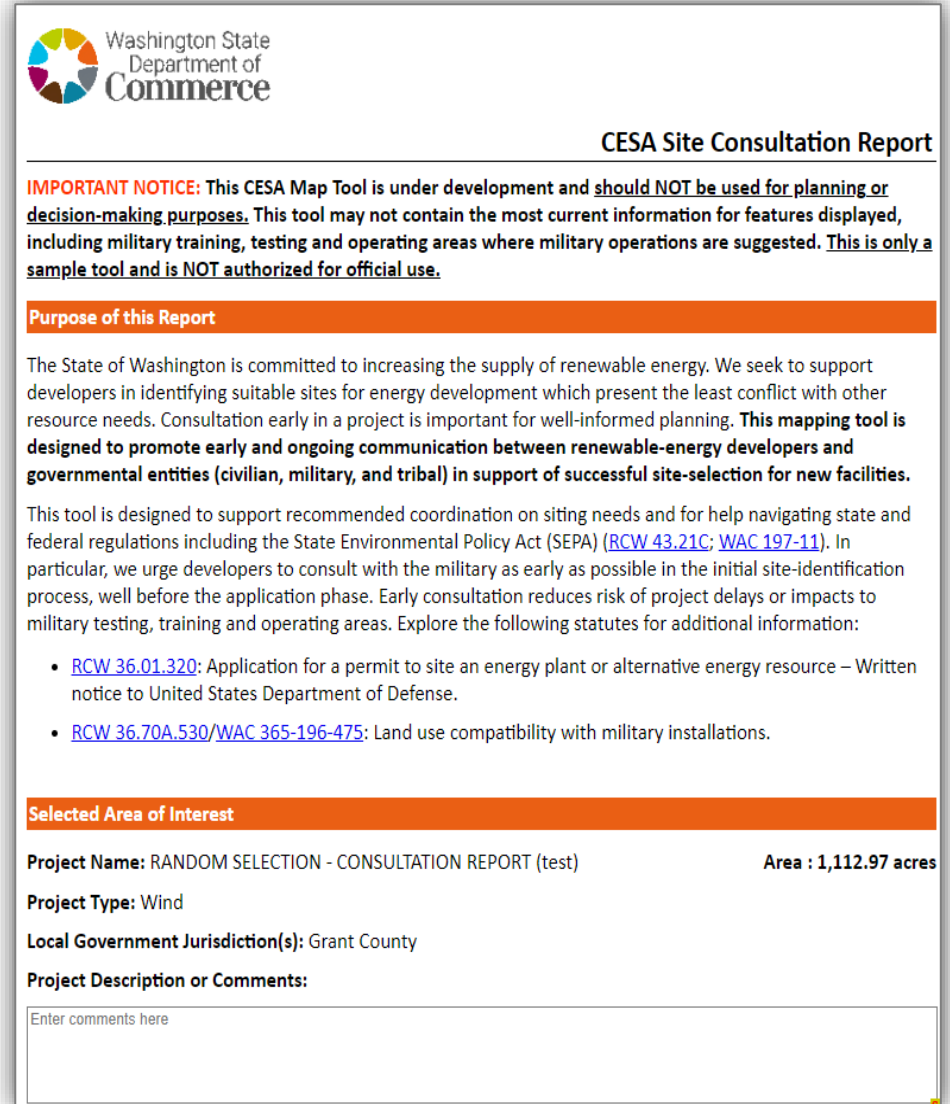
2022 Washington State Compatible Energy Siting Assessment

Prototype map tool: Screenshot tutorial



Site-specific
consultation report:

Report page 1:
Notices and
regulations
Project information
User notes box



2022 Washington State Compatible Energy Siting Assessment

Prototype map tool: Screenshot tutorial

Pages 2-4:

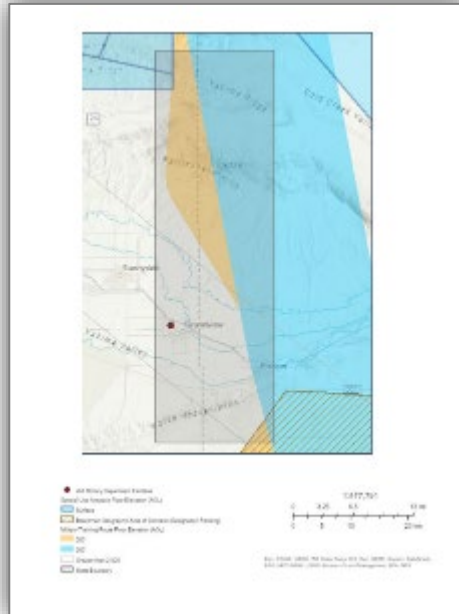
Site map

Military contacts

Informational context

Guidance on further consultation needs

All results based on user selections.
Information supplied by entities listed.



Washington State Department of Commerce

CESA Site Consultation Report

Military Consultation Required

Summary of Relevant Military Training, Operating, and Testing Areas:

Features	Count	Area (Acres)
Special Use Airspace Floor Elevation (AGL)	2	2,950
Boardman Geographic Area of Concern (Designation Pending)	1	2,128
Military Training Route Floor Elevation (AGL)	8	337,510

Military areas within Area of Interest and Associated Points of Contact:

Feature Name	Contact	Contact Phone	Contact Email
U.S. Navy	Kim Peacher	(360) 930-4085	kimberly.n.peacher.civ@us.navy.mil
U.S. Air Force	Leroy Alvarez	(253) 982-4057	leroy.alvarez.1@us.af.mil
U.S. Army	Robert H. Rodriguez	(253) 967-5010	robert.h.rodriguez.civ@mail.mil

NORAD Radar:

Not all military equities are depicted. If considering a proposal/project, please notify the local NW DoD RCT representatives, Kimberly Peacher (Community Planning & Liaison Officer, Northwest Training Range Complex, (360) 930-4085, kimberly.n.peacher.civ@us.navy.mil) to discuss potential military equities within the area of consideration.

Definitions:

Military Training Route (MTR) – is a joint-designation by the FAA and the US Department of Defense (DOD). MTRs are mutually developed for use by the military for the purpose of conducting low-altitude, high-speed training. Airspace of defined vertical and lateral dimensions established for the conduct of military training at airspeeds in excess of 250 knots indicated airspeed. For the MTRs and other related military layers, AGL stands for Above Ground Level which is a height measured with respect to the underlying ground surface. The floor is the lowest the pilot is authorized to fly and the ceiling is the highest the pilot flies within the 'cylinder.' [Source]

Special Use Airspace (SUA) – a designation for airspace in which certain activities must be confined, or where limitations may be imposed on aircraft operations that are not part of those activities. Certain special use airspace areas can create limitations on the mixed use of airspace. SUA or SAO consists of prohibited, restricted, warning, military operations, and alert areas. [Source]

DoD-Approved **Boardman Geographic Area of Concern (Designation Pending)** maps show specific mission areas where wind development would present an adverse impact to military operations. The Boardman Geographic Area of Concern is identified due to possible effects upon two main DoD military missions. The Naval Weapons Systems Training Facility at Boardman and its associated airspace are the U.S. Navy's primary resource for all airborne electronic attack aircraft air combat maneuver training. This training includes low level aircraft operations. Tall structures, such as wind turbines and electrical transmission lines, constructed under Restricted Airspace (R-5701) and Military Training Routes will prevent the U.S. Navy from fulfilling the training mission. [Source]

Washington State Department of Commerce

CESA Site Consultation Report

Other Consultation Recommended

Virtually all projects that require approval in the State of Washington will need to be reviewed at some point by these agencies. The sooner consultation begins, the easier it is to avoid potential obstacles and prevent later delays in permitting.

These agencies have relevant statewide interests:

Agency	Contact	Contact Phone	Contact Email
Washington Department of Archaeology and Historic Preservation	Morgan McLemore	(360) 556-3065	morgan.mclemore@dahp.wa.gov
Washington Department of Fish & Wildlife	Keith Folkerts	(360) 902-2200	keith.folkerts@dhw.wa.gov
Washington State Department of Ecology	Casey Dennehy	(360) 407-6000	cdene461@ecy.wa.gov

Additional agencies to consult with based on your specific area of interest:

Agency	Contact	Contact Phone	Contact Email
Bureau of Land Management	Lenore Heppler	(503) 808-6154	lheppler@blm.gov
Washington State Department of Natural Resources - Clean Energy Program	Dever Halfner-Ratliff	(360) 742-4133	micep@dnr.wa.gov
Washington State Department of Transportation	Max Platts	(360) 705-7000	plattsT@wsdot.wa.gov

Tribal Consultation

Based on information provided by the Washington State Department of Transportation regarding Tribal Reservation and Trust Lands in Washington State, your area of interest may coincide with areas of interest for the tribal nations listed below. **Please note:** Other tribal communities may have interests in your selected area and you are responsible for consulting with all relevant tribal nations. Please use this list as an initial guide to tribal consultation:

Tribal-related data for the area you selected may be limited or unavailable within this application. We urge you to reach out to all tribes currently or historically inhabiting your area of interest since GIS data regarding tribal lands are known to be incomplete.