



USS Oregon (SSN 793) passing Ledge Light on recent transit to SUBASE NLON



SUBASE NLON – Groton, CT

# IGSA Partnerships

Steven Sadlowski, AICP – Community Planning and Liaison Officer – SUBASE NLON

# CRCOG IGSA

- Allows SUBASE to purchase installation support supplies and services from the COG
- CRCOG can access State Contracts – wide variety of services available
- Very simple procurement process
- Annual savings of \$160K / 49%



Signed @ SUBASE ceremony April 13, 2022

# CRCOG: Tunnel Example

- Lead abatement, painting, general improvements
- Independent Government Estimate = \$250,075 (not including covers)
- State of CT Contract cost: 105,840 (including CRCOG fee)
- Cost avoidance of \$144,235 or 57%
- Mishap Prevention and Hazard Abatement Program fund awar – start project this winter



# CT DOT

- IGSA to perform surface and sub-surface storm water drainage inspection, repairs and maintenance and related professional services.
- CT DOT maintains over 3,700 miles of roads, having extensive experience and capabilities



Signed 27 SEP 2022

# CT DOT: Drainage Swale

- Maintain 2,000'+ drainage swale
- Sediment is blocking outfalls from some barracks
- IGE \$225,000 minimum
- CT DOT cost \$60K
- Cost Avoidance of \$165K or 73%
- Environmental and disposal savings are significant
- Annual maintenance will keep it functioning correctly.



# Groton Utilities

- Owned by the City of Groton, supplies water and electricity to the Groton area and SUBASE
- Has been a close partner of SUBASE for years
- Enacting this IGSA to further this partnership and leverage their experience in utility systems
- Annual savings of 33,691, or 25%



Expected to be signed by 28 OCT 2022

# Groton Utilities: Work

- Hydrant flushing / flow testing: Last contract \$39,611 > GU \$23,000 – 42% less
- Backflow Prevention Inspections: IGE \$29,980 > GU \$14,480 – 50% less
- Drinking Water Testing: SUBASE \$67,281 > GU \$49,170 – 27% less.
- Emergency Response \$750/Hr.
- Professional Services – Minimal savings but no travel expenses



# IGSA benefits

- Easier process, saves acquisition labor
- Strengthens relations
- Leverages strength of partners
- Revenue for partners
  
- Pro Tip: Need a champion & patience!
  
- Thank you to John Broughton, James Tehero and Matthew Gilmartin from SIS, our contract support in this effort



13 APR 2022 Signing Ceremony



# Thank You

Steven Sadlowski, AICP

US Navy Submarine Base New London

[Steven.f.sadlowski.civ@us.navy.mil](mailto:Steven.f.sadlowski.civ@us.navy.mil)

860-389-5096



Chief Machinist's Mate (Nuclear) David Begley is greeted by his daughter during a homecoming event for the Los Angeles-class attack submarine USS San Juan (SSN 751) at Naval Submarine Base New London in Groton, Conn., Aug. 24, 2021.



# NRSE Area of Responsibility

- CNRSE AOR**
- 17 Installations
  - 39 NOSCs
  - 6 Installations with Ports
  - 11 Air Stations
  - 20 OLFs
- Top Tenants**
- CNATRA
  - NETC
  - JTF GTMO
  - FRC-SE
- Region with most:**
- Installations
  - Ports
  - Air Stations
- Facts:**
- FY16 Obligations: \$1.5B
  - # CNIC Personnel: 10,529 (Includes Military, Civilian, NAF & Contractor)

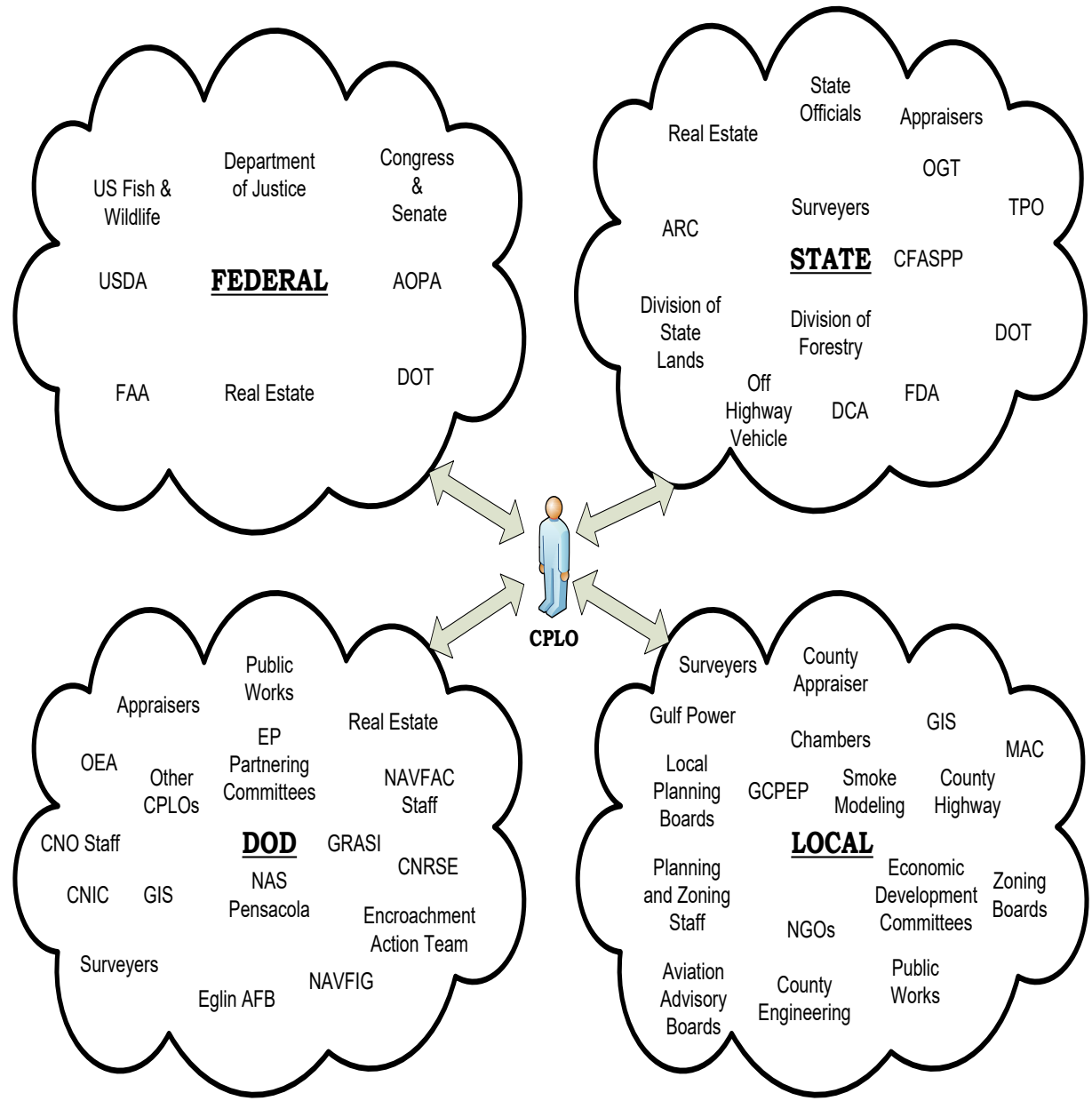


**ENGAGE ENABLE SUSTAIN**

- REPI KEYSTONES**

  - Relationships
  - Grant Programmatics
  - RE Execution

## Relationships are Key



# Partnerships for Climate Change and Resiliency



## Navy Region Southwest

Jason Golumbfskie-Jones, P.E.  
Fleet Environmental and  
Government Affairs

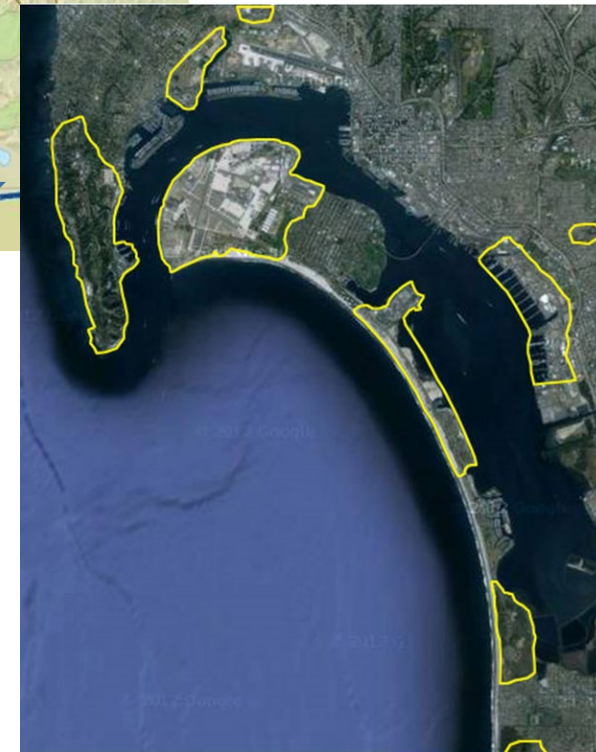
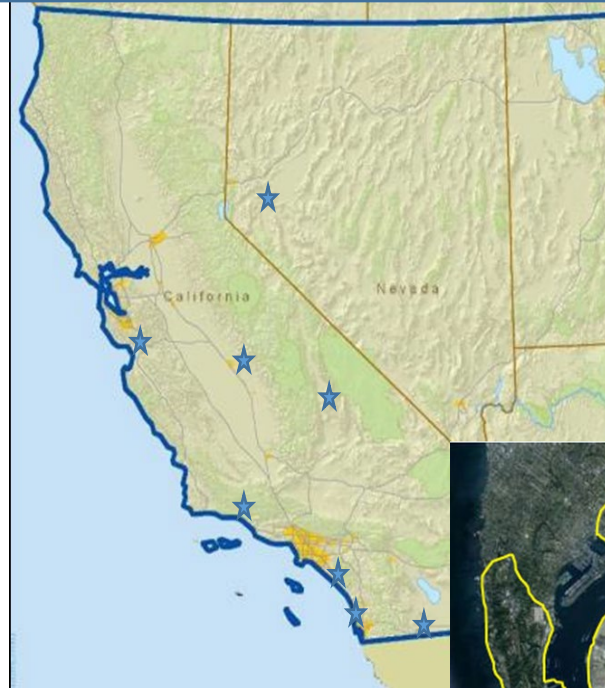
[Jason.Golumbfskie@navy.mil](mailto:Jason.Golumbfskie@navy.mil)



**One Team, One Voice, One Mission**

Nov 1, 2022

- Scripps Institute of Oceanography
  - SLR and CC research throughout region
  - MOAs
  - Flood vulnerability assessments
- San Diego Bay INRMP
  - Shared management of SD Bay resources
    - Species
    - Land use coordination
    - Blue economy info sharing
  - Carbon sequestration
  - SLR MOA



# Facility Planning to Meet the 21<sup>st</sup> Century



GeoReadiness Explorer

FISH

FISH Dashboard

MHHW Surge

Sea Level Rise Slider  National Flood Hazard Layer

Facility	Installa...	MDI	Replac...
C9	N0024...		176327
41	N0024...		43783
C12	N0024...		176327
15a	N0024...		21307
C15	N0024...		81061
22	N0024...		168750
126	N0024...	82	161123
46	N0024...		537552
C17	N0024...		81061

1 to 9 of 25 Page 1 of 3

Data for the SLR slider is provided by the National Oceanic and Atmospheric Administration's (NOAA) Digital Coast Sea Level Rise Viewer. Users are encouraged to read the FAQ on this data located here.



**Utilizing SERDP Products and updated Unified Facilities Criteria**

# Path Forward

- Utilize the new DOD Climate Adaptation Plan as a guidebook for installation planning to ensure readiness, resiliency, and sustainability throughout the Region.
- Integrate data from vulnerability and risk assessments into Installation Development Plans.
- Continue to update and use UFCs to ensure buildings will stand the test of time and climate impacts.
- Engage with neighboring cities, organizations, and other agencies to share efforts to increase resiliency.
- Partner with NOAA, Port of SD, and Universities (i.e. Scripps) to analyze climate impacts and learn new ways to protect our facilities.



# Questions?

Jason Golumbskie-Jones  
[Jason.Golumbskie@navy.mil](mailto:Jason.Golumbskie@navy.mil)



**One Team, One Voice, One Mission**