

# Implementing the Department of the Navy's Climate Strategy



## **Moderator:**

**Celeste Werner, FAICP**

Chief of Strategic Development  
Matrix Design Group



## **Case Study 1**

**Matt Ryan**

County Supervisor  
Coconino County, AZ

**Jay Smith**

Forest Restoration Director  
Coconino County, AZ

**Mary Beth Greiner**

Deputy Regional Community Plans and Liaison Officer and Readiness and Environmental Protection Integration (REPI) Program Manager  
Navy Region Southwest

## **Case Study 2**

**Scott Morgan**

Chief Deputy Director  
Governor's Office of Planning and Research  
State of California

**Steve Chung**

NW Regional Community Plans Liaison Officer  
DoD Pacific Coast Energy Compatibility

## Case Study 1

# Leveraging REPI and Sikes Act Authority in Northern Arizona

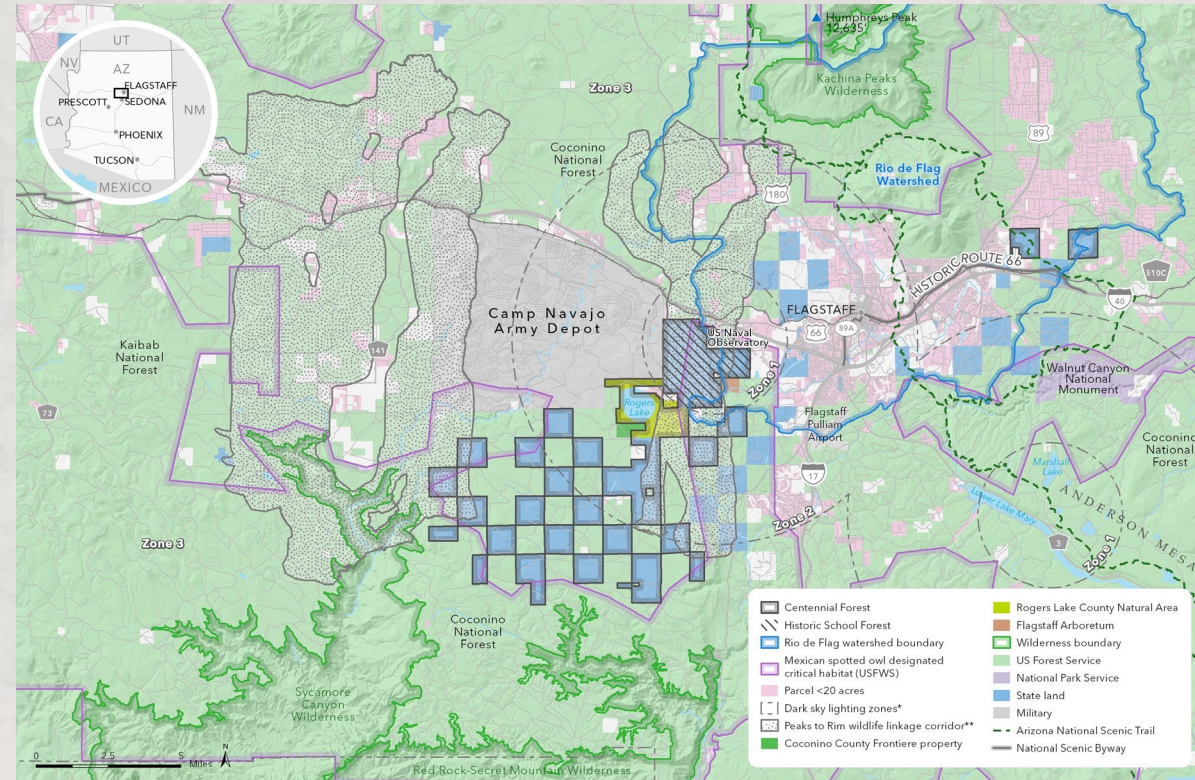
Supervisor Matt Ryan  
Coconino Co. District 3

Jay Smith  
Forest Restoration Dir.

Mary Beth Greiner  
NRSW REPI Mngr.

# Coconino County

- City of Flagstaff was the first International Dark Sky Community
- Coconino County includes Naval Observatory Flagstaff Station, Navy Precision Optical Interferometer, and Camp Navajo
- Joint Regional Planning Efforts
  - Outdoor Lighting Ordinance
  - JLUS Implementation
  - Dark Sky Education & Compliance
  - Conservation of wetlands and wildlife corridors



# COCONINO JOINT LAND USE STUDY



JANUARY 2019



## Joint Land Use Study

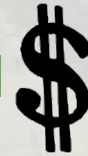
- Primary Issues:
  - Land Use
  - Dark Skies
  - Transportation
  - **Environmental Health**
    - Forest Health
    - Forest Land Conversion
    - Migration & Wildlife

# REPI Program Overview

## What is REPI?

- Readiness & Environmental Protection Integration (REPI)
- Supports cost-sharing partnerships between the military, private conservation groups, and state & local governments (a.k.a. eligible entities) to protect military test & training capabilities and conserve land.

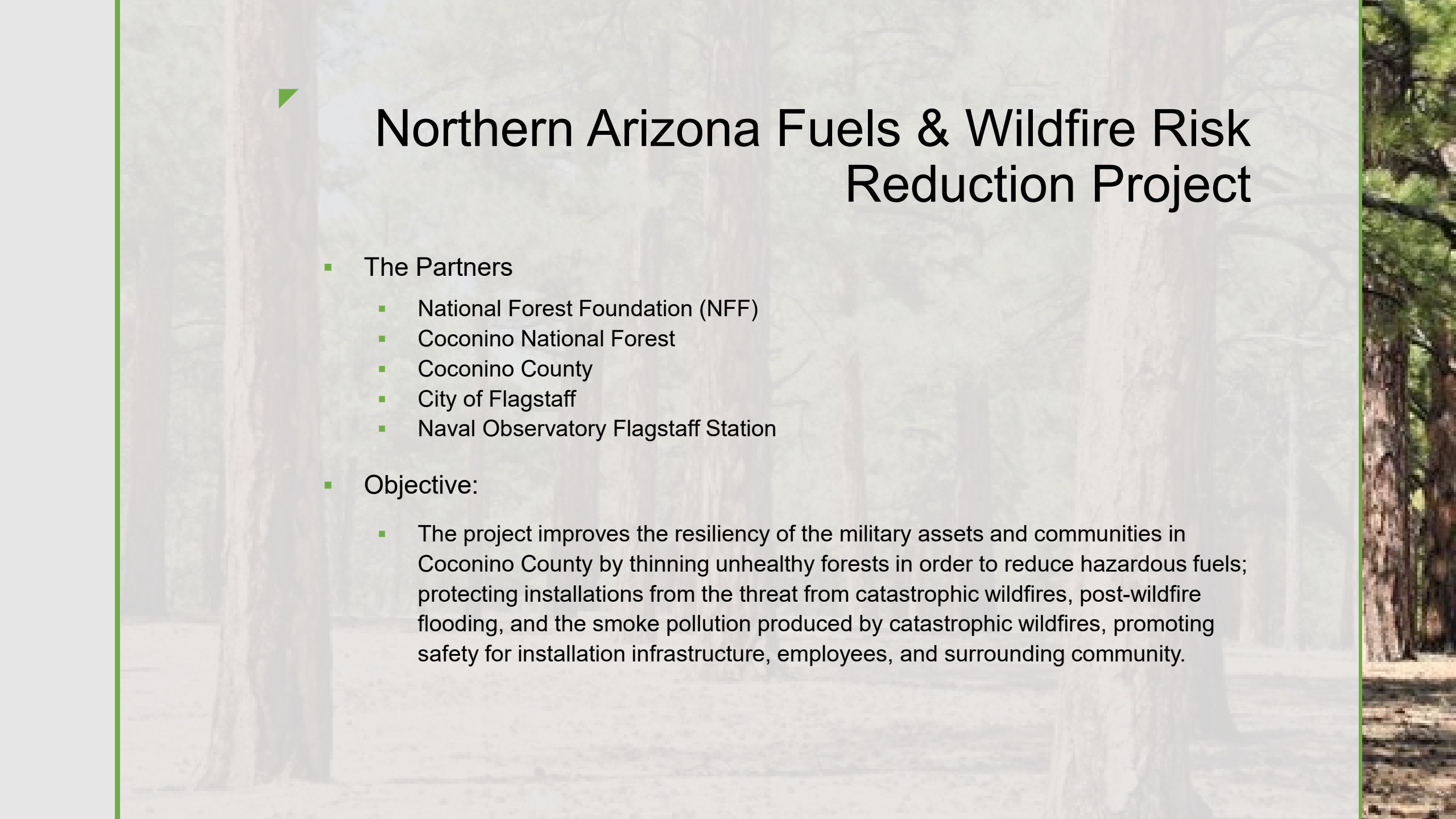
## How to request REPI



- Service Nomination/  
Annual REPI Submission
  - Nomination of specific projects for funding
- Partner Nomination/  
REPI Challenge
  - In coordination with U.S. Endowment
  - Large, innovative projects

## How to implement REPI

- **REPI Buffering** enables military to acquire real property interests from willing sellers & may include some natural resource management work.
- **Implementation Agreements** via Sikes Act Cooperative Agreements or Intergovernmental Service Agreements allows for management or improvement of off-base habitat preservation and resiliency initiatives without acquisition.



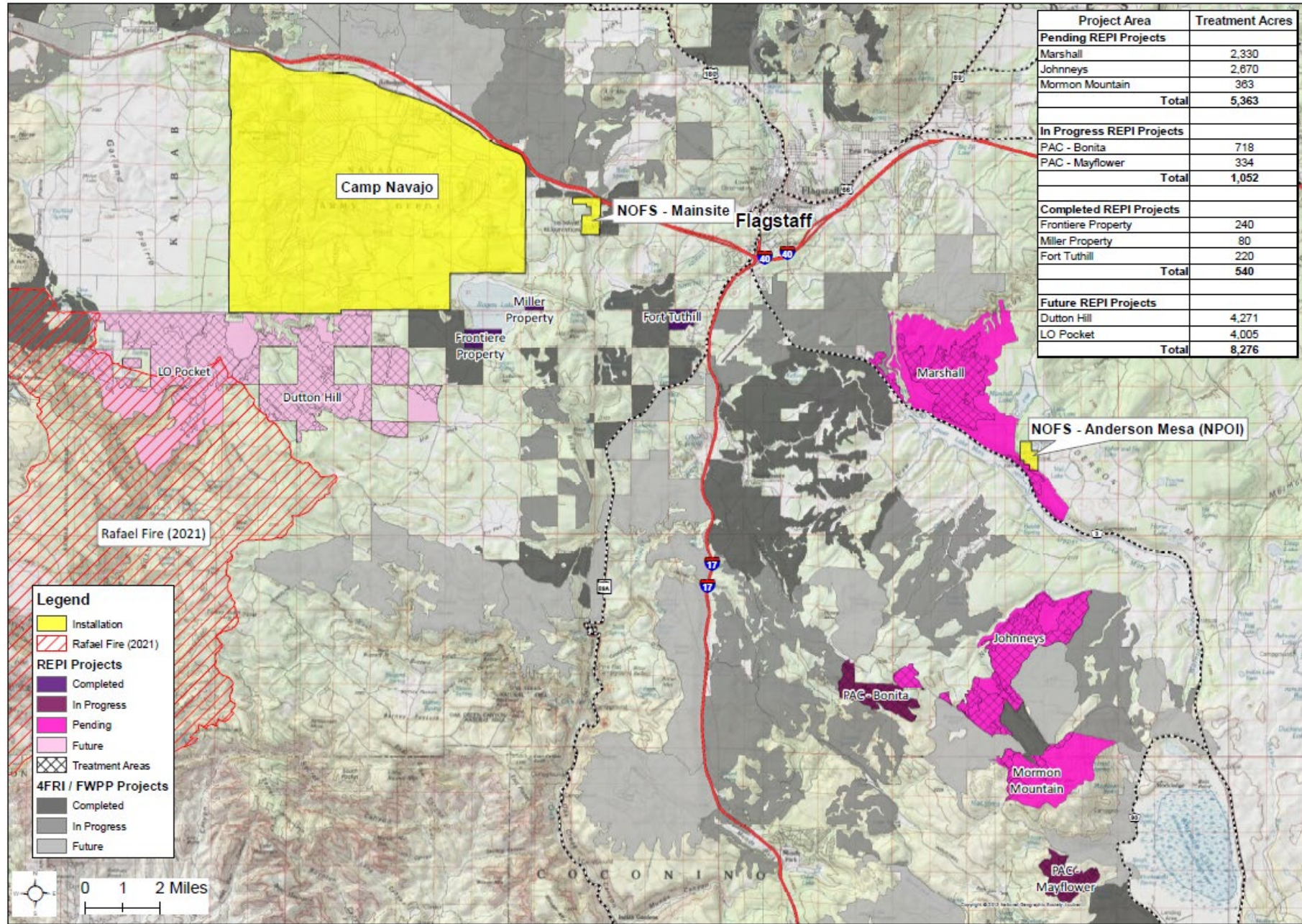
# Northern Arizona Fuels & Wildfire Risk Reduction Project

- The Partners
  - National Forest Foundation (NFF)
  - Coconino National Forest
  - Coconino County
  - City of Flagstaff
  - Naval Observatory Flagstaff Station
- Objective:
  - The project improves the resiliency of the military assets and communities in Coconino County by thinning unhealthy forests in order to reduce hazardous fuels; protecting installations from the threat from catastrophic wildfires, post-wildfire flooding, and the smoke pollution produced by catastrophic wildfires, promoting safety for installation infrastructure, employees, and surrounding community.



# Flagstaff Ranger District Current/Proposed REPI Grant Projects

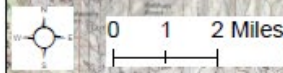
COCONINO NATIONAL FOREST - SOUTHWESTERN REGION



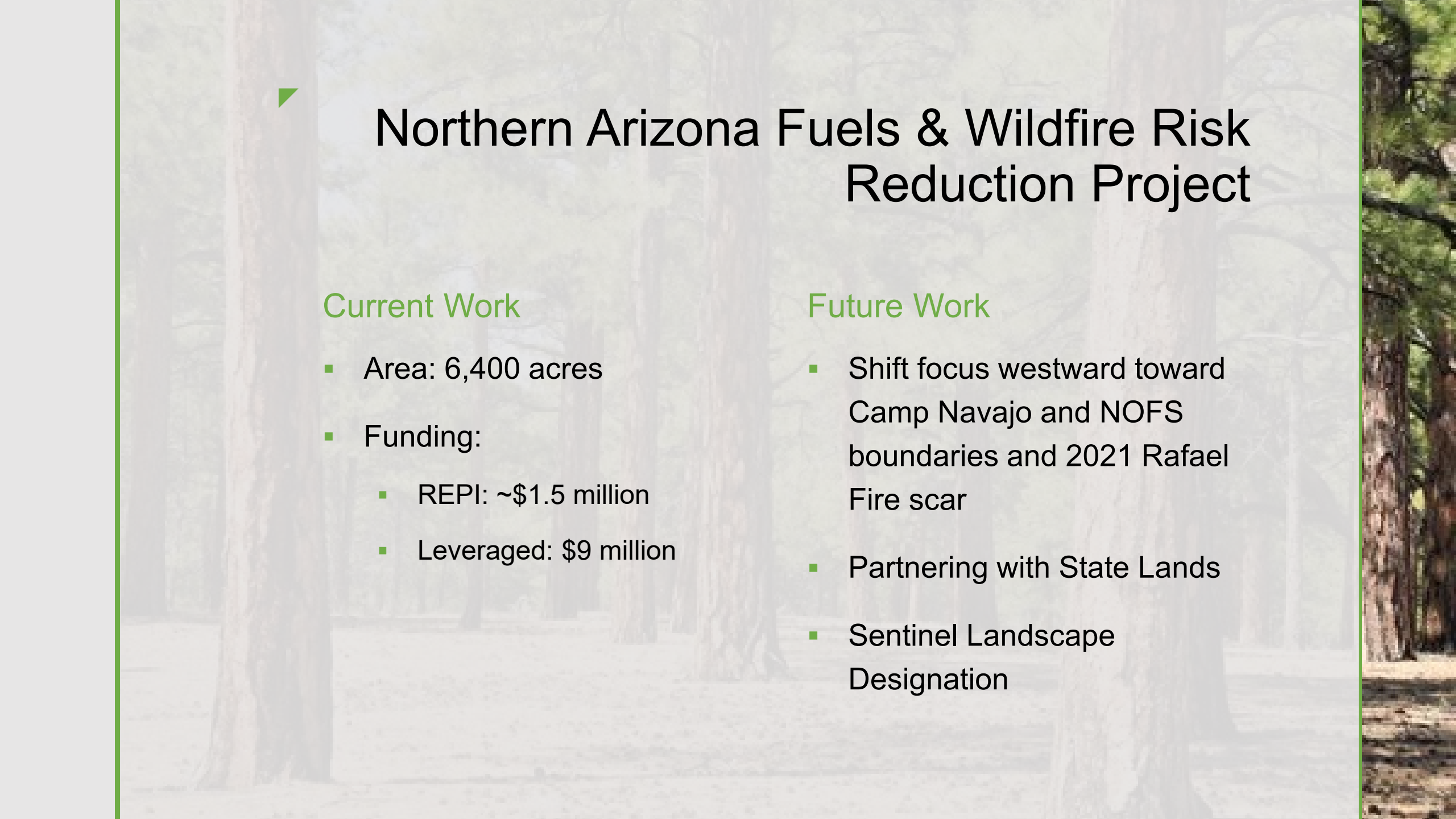
Project Area	Treatment Acres
<b>Pending REPI Projects</b>	
Marshall	2,330
Johnneys	2,670
Mormon Mountain	363
<b>Total</b>	<b>5,363</b>
<b>In Progress REPI Projects</b>	
PAC - Bonita	718
PAC - Mayflower	334
<b>Total</b>	<b>1,052</b>
<b>Completed REPI Projects</b>	
Frontiere Property	240
Miller Property	80
Fort Tuthill	220
<b>Total</b>	<b>540</b>
<b>Future REPI Projects</b>	
Dutton Hill	4,271
LO Pocket	4,005
<b>Total</b>	<b>8,276</b>

**Legend**

- Installation
- Rafael Fire (2021)
- REPI Projects**
- Completed
- In Progress
- Pending
- Future
- Treatment Areas
- 4FRI / FWPP Projects**
- Completed
- In Progress
- Future







# Northern Arizona Fuels & Wildfire Risk Reduction Project

## Current Work

- Area: 6,400 acres
- Funding:
  - REPI: ~\$1.5 million
  - Leveraged: \$9 million

## Future Work

- Shift focus westward toward Camp Navajo and NOFS boundaries and 2021 Rafael Fire scar
- Partnering with State Lands
- Sentinel Landscape Designation



# Implementing the Department of the Navy's Climate Strategy

## Case Study 2

Pursuing Joint Agency Partnerships with Mutually  
Beneficial Objectives

2 NOV 2022

Presented to:

**ADC Installation Innovation Forum**

Presented by:

**Scott Morgan**

Chief Deputy Director

Governor's Office of Planning and Research

**Steve Chung**

NRSW Encroachment Program Director

DoD Pacific Coast Energy Compatibility Lead



---

OLDCC Grant:

**Northern California and Southern Oregon  
Mission Compatibility and Transmission  
Infrastructure Assessment Project**



---

## Office of Local Defense Community Cooperation

- Grant to the California Energy Commission
- Work being completed by the Schatz Energy Research Center, California State Polytechnic University, Humboldt
- Support from and coordination with NRSW



---

## Benefits to California

Provides information to California, Oregon, and stakeholders to further assess and identify areas for offshore wind development

Provides data, mapping, and technical analysis of electricity and transmission infrastructure limitations and opportunities

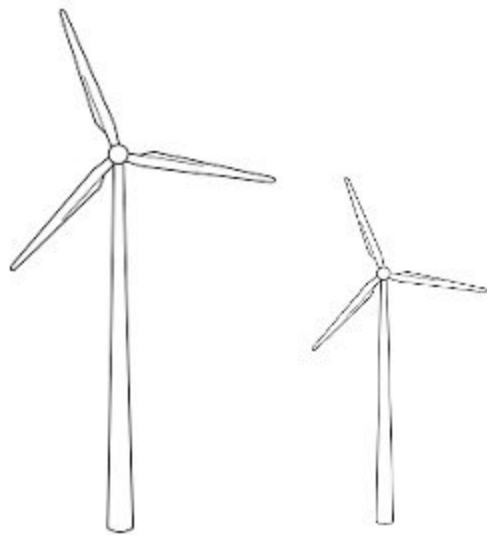
Helps address and prevent encroachment on Department of Defense (DoD) testing, training and military operations

Enhances civilian and military communication, collaboration, and partnership



## Offshore Wind in California

*Key to meeting the state's climate and renewable energy goals.*



- Increase renewable generation
- Diversify California's energy portfolio
- Improve grid reliability
- Create jobs
- Stimulate state and local economic development



## Project Overview

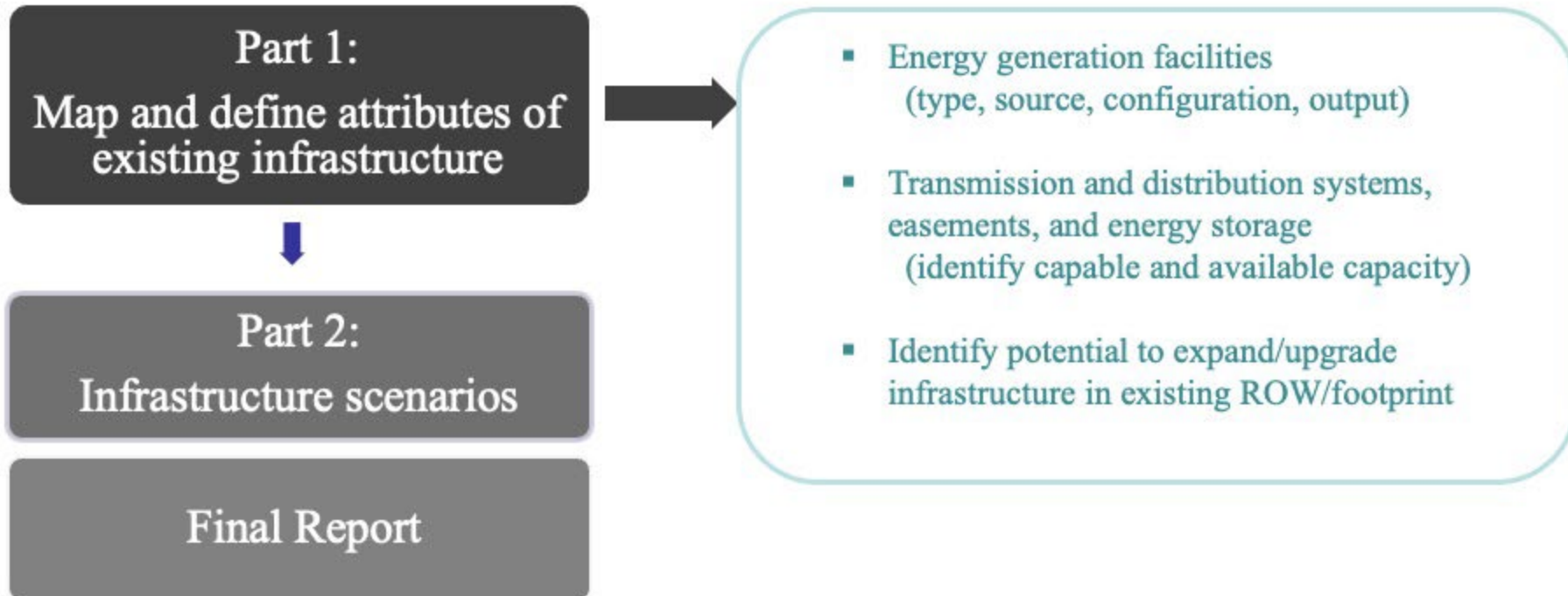
### **Northern California & Southern Oregon Mission Compatibility and Transmission Infrastructure Assessment**

- Project goal is to provide data, mapping and technical analysis to support continued partnership and promote early consultation with the DoD.
- Maps and analyzes existing electricity and transmission infrastructure to understand limitations and opportunities.
- Develops scenarios for offshore wind to deliver energy to California, Oregon, and the broader Western grid.



## Project Overview cont.

### **Northern California & Southern Oregon Mission Compatibility and Transmission Infrastructure Assessment**







## Long History of Coordination

- State Laws on Development Application Notification
- General Plan and Military Readiness
- Installation Resilience/Joint Land Use Studies/Supply Chain
- Liaison with Branches of the Armed Services
- Energy Development/DRECP/State Grants
- Governor's Military Council
- Western Regional Partnership
- Energy MOU



**Context:** DoD conducts extensive training, testing and operations in the airspace, sea surface, subsurface and seafloor of California's Central and Southern Regions – all of which are critical to military readiness and National Security.

**DOD Purpose & Need:** With robust renewable energy goals by CA & OR, increased demand for clean energy generating projects will gravitate towards existing commercial scale (500KV) transmission infrastructure existing within key DoD operational areas and assets residing in Central and Southern Regions of CA.

**Impact to Readiness & National Security:** Central & Southern CA possesses DoD's most critical training & testing areas required for:

- Carrier Strike Group (CSG)/Large Force Exercise Training – COMPUEX/SUSTEX.
- Joint Strike Fighter Wing Pacific use of northern extent of W-532 along with W-283/285 as part of expanded training area.
- Military Training Routes provides critical ingress and egress for unique combination of offshore warning area transitioning to low altitude military training route to instrumented China Lake target complex in support of strike training.
- Certification for deployable forces

**SUPPORT INITIATIVES TO ENCOURAGE DEVELOPMENT IN  
NORTHERN CALIFORNIA & SOUTHERN OREGON**

# South of San Francisco – Extremely Congested & Critical DoD Operations

## Extensive DoD Footprint

Live Fire Ranges

1

Special Warfare Operations

2

Offshore Testing & Training

3

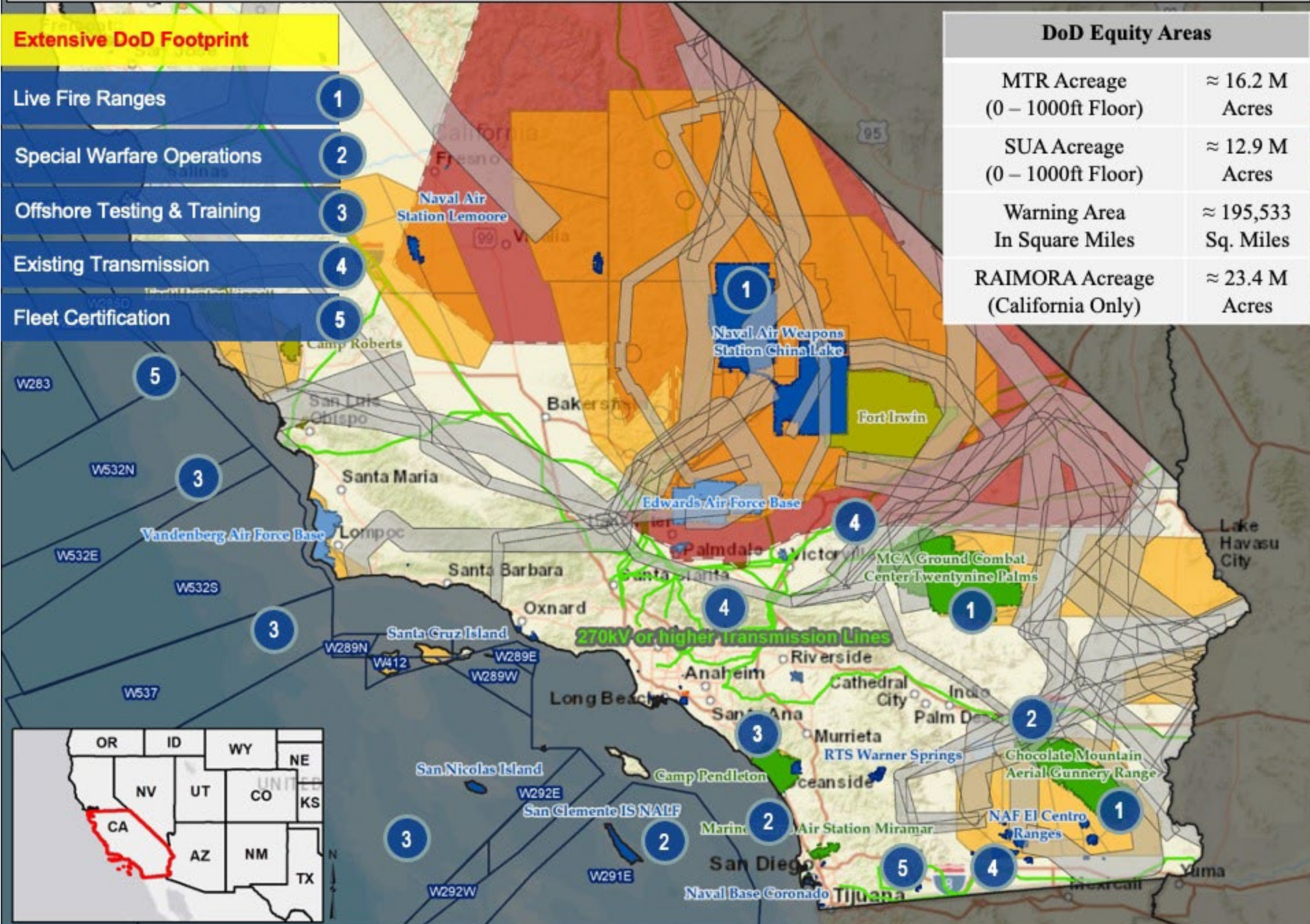
Existing Transmission

4

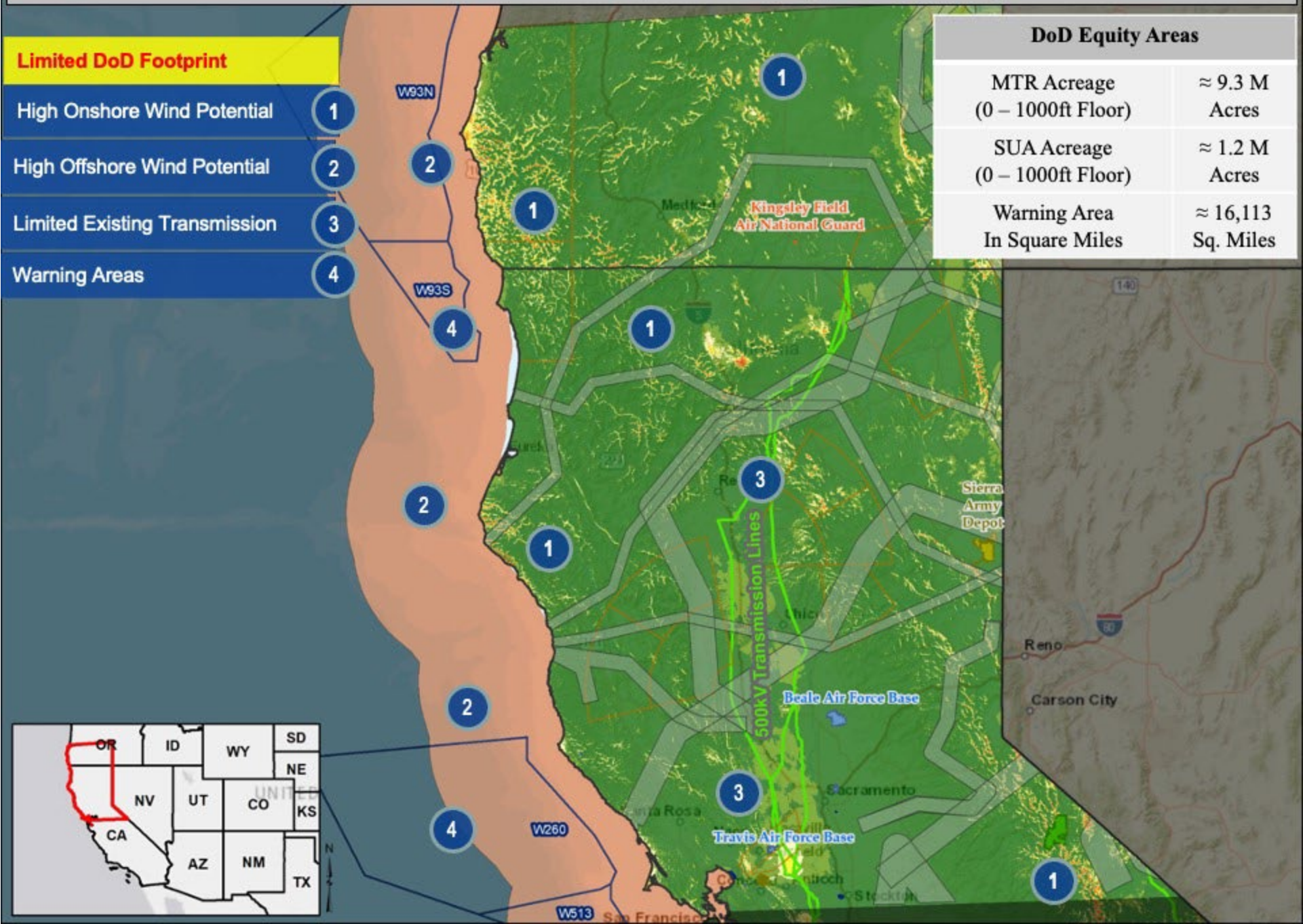
Fleet Certification

5

DoD Equity Areas	
MTR Acreage (0 – 1000ft Floor)	≈ 16.2 M Acres
SUA Acreage (0 – 1000ft Floor)	≈ 12.9 M Acres
Warning Area In Square Miles	≈ 195,533 Sq. Miles
RAIMORA Acreage (California Only)	≈ 23.4 M Acres



# North of San Francisco to Coos Bay – Less Congested DoD Operations





## Closing Thoughts

DoD Equity	Area North of San Francisco to Coos Bay	Percentage of DoD Equity Area North of San Francisco to Coos Bay	Area South of San Francisco	Percentage of DoD Equity Area South of San Francisco
MTR Acreage (0 – 1000ft Floor)	≈ 9.3 M Acres	37%	≈ 16.2 M Acres	63%
SUA Acreage (0 – 1000ft Floor)	≈ 1.2 M Acres	9%	≈ 12.9 M Acres	91%
Warning Area In Square Miles	≈ 16,113 Sq. Miles	8%	≈ 195,533 Sq. Miles	92%
GAC Acreage (California Only)	NA	NA	≈ 23.4 M Acres	100%

- Current OLDCC Grant will support key & necessary analysis to afford State/Federal agencies plan for future infrastructure & funding decisions.
- DOD desires to partner with State/Federal agencies to support renewable energy project in areas less congested with DOD operational requirements.
- Both CA & OR have strong desires to support DOD and this OLDCC Grant.

# Implementing the Department of the Navy's Climate Strategy



**Moderator:** **Celeste Werner, FAICP**

Chief of Strategic Development  
Matrix Design Group

## Case Study 1

**Matt Ryan**

County Supervisor  
Coconino County, AZ

**Jay Smith**

Forest Restoration Director  
Coconino County, AZ

**Mary Beth Greiner**

Deputy Regional Community Plans and Liaison Officer and Readiness and Environmental Protection Integration (REPI) Program Manager  
Navy Region Southwest

## Case Study 2

**Scott Morgan**

Chief Deputy Director  
Governor's Office of Planning and Research  
State of California

**Steve Chung**

NW Regional Community Plans Liaison Officer  
DoD Pacific Coast Energy Compatibility