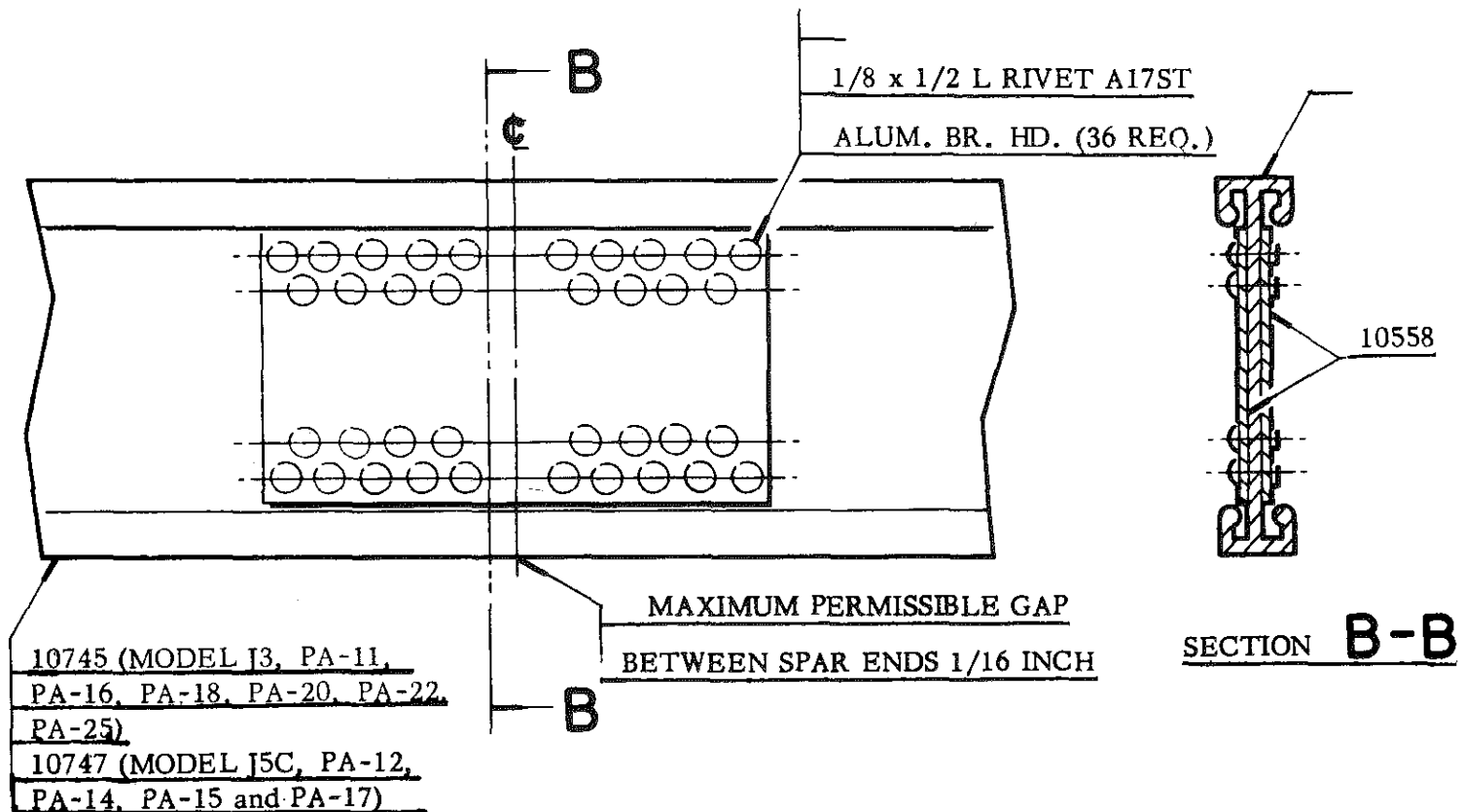


Front spar splice kit - J3, PA-11, PA-16, PA-20, PA-22 and
 PA-25 - Part No. 750 736
 Rear spar splice kit - J3, PA-11, PA-16, PA-18, PA-20,
 PA-22 and PA-25 - Part No. 750 737

Front spar splice kit - PA-12, J5C, PA-14, 15, 17 and 18
 Part No. 750 738
 Rear spar splice kit - PA-12, J5C, PA-14, 15 and 17
 Part No. 750 739

The above kit consists of spar splice plates, spar splice section, and spar splice rivets

NOTE: There is no tolerance set as to how far the main spar can be bent and still straighten cold. However, the metal spar can be straightened so long as there are no buckles or kinks in same.

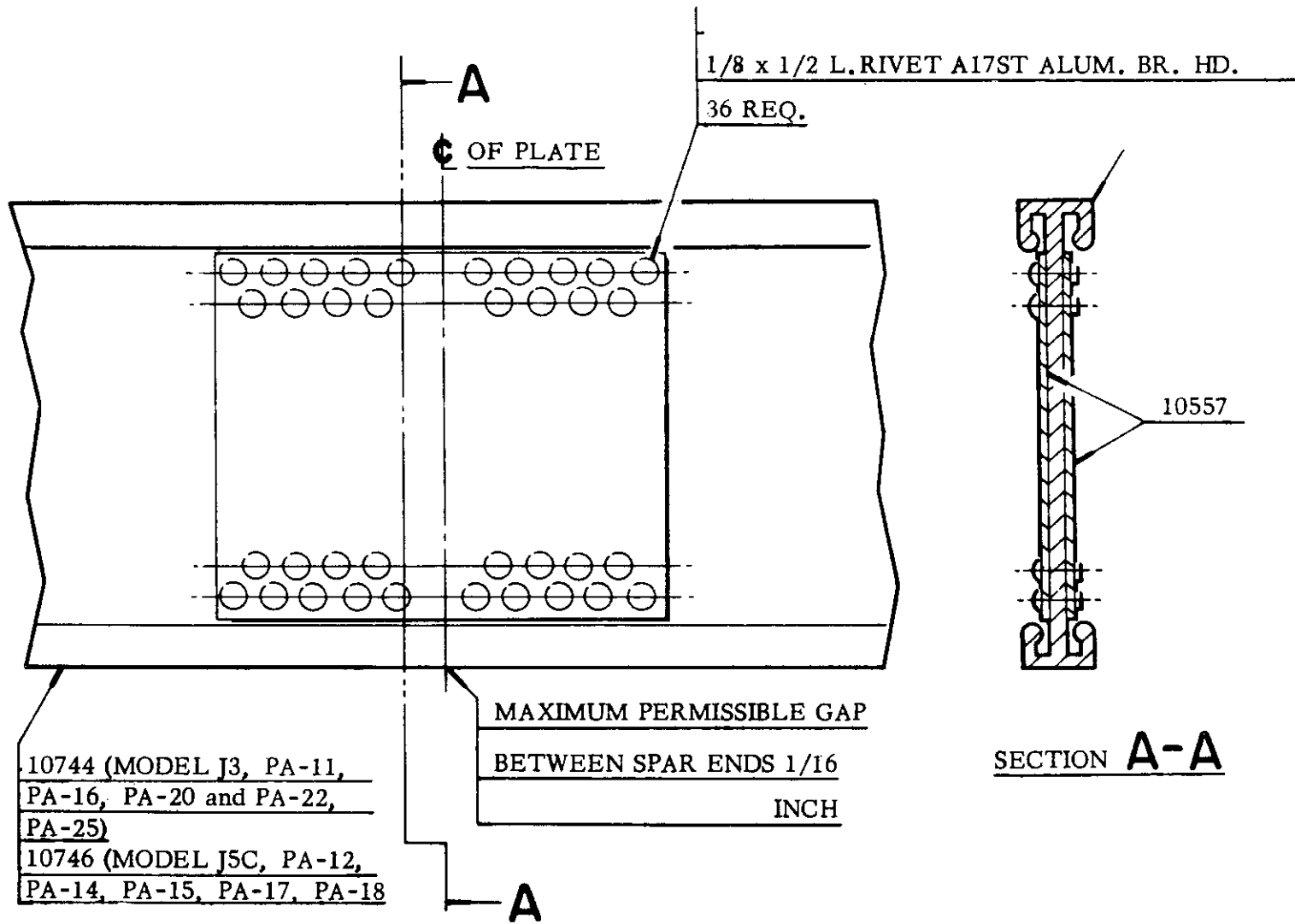


SPLICE - REAR SPAR

THIS SPLICE TO BE USED OUTBOARD OF STRUT POINT
 OR STRUT POINT REINFORCEMENT ONLY

SPAR SPLICE KITS AVAILABLE THROUGH YOUR DISTRIBUTOR

S. M. No. 3A



SPLICE - FRONT SPAR

THIS SPLICE TO BE USED OUTBOARD OF STRUT POINT ONLY

SERVICE

MEMO